

## List of pages in this Trip Kit

Trip Kit Index

Airport Information For URMT

Terminal Charts For URMT

Revision Letter For Cycle 09-2019

Change Notices

Notebook

## General Information

Location: STAVROPOL RUS  
ICAO/IATA: URMT / STW  
Lat/Long: N45° 06.5', E042° 06.8'  
Elevation: 1486 ft

Airport Use: Public  
Daylight Savings: Not Observed  
UTC Conversion: -3:00 = UTC  
Magnetic Variation: 8.0° E

Fuel Types: Jet A-1  
Repair Types: Minor Airframe, Minor Engine  
Customs: Yes  
Airport Type: IFR  
Landing Fee: Yes  
Control Tower: Yes  
Jet Start Unit: No  
LLWS Alert: No  
Beacon: No

Sunrise: 0149 Z  
Sunset: 1627 Z

## Runway Information

Runway: 07  
Length x Width: 8530 ft x 157 ft  
Surface Type: asphalt  
TDZ-Elev: 1486 ft  
Lighting: Edge, ALS

Runway: 25  
Length x Width: 8530 ft x 157 ft  
Surface Type: asphalt  
TDZ-Elev: 1434 ft  
Lighting: Edge, ALS

## Communication Information

ATIS: 134.200  
ATIS: 128.825 Non-English  
Stavropol Tower: 120.900  
Stavropol Tower: 124.000  
Stavropol Ground Ramp/Taxi: 119.000  
Stavropol Approach: 124.000  
Stavropol Approach: 120.300  
Stavropol Transit Operations: 131.700 Non-English

**URMT/STW**  
**SHPAKOVSKOYE**

**JEPPESEN**

**STAVROPOL, RUSSIA**

17 JUL 15

10-2

Eff 23 Jul

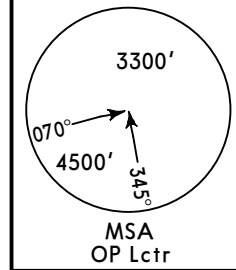
**STAR**

ATIS  
**134.2**  
( Russian 128.82 )

Apt Elev  
**1486'**

Alt Set: MM (hPa on request) QNH on request **(QFE)**  
Trans level: FL60 Trans alt: 4440' **(2954')**  
Flights over Stavropol city are prohibited below FL60.

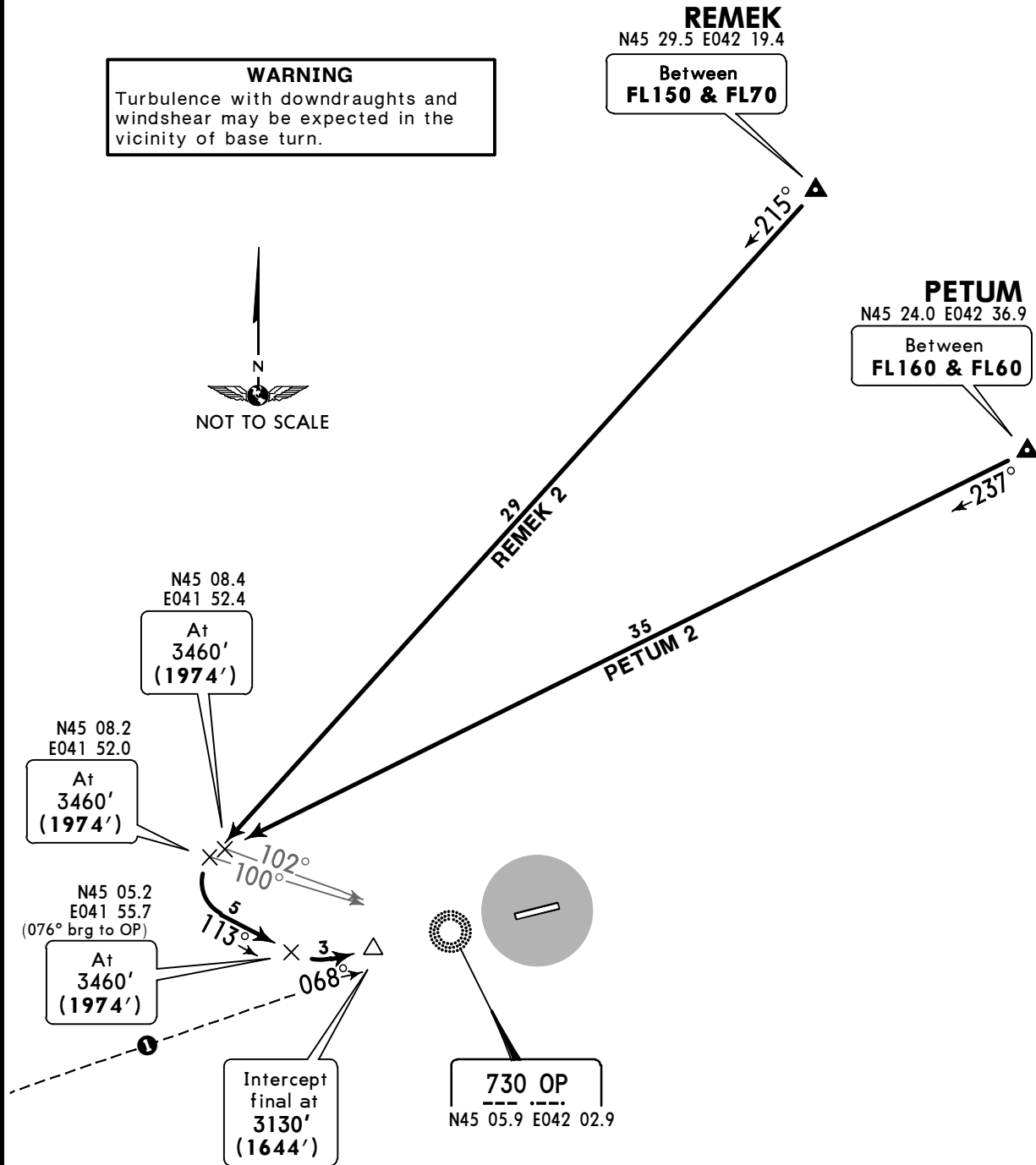
**PETUM 2**  
**REMEK 2**  
**RWY 07 ARRIVALS**



**WARNING**  
Turbulence with downdraughts and windshear may be expected in the vicinity of base turn.

**REMEK**  
N45 29.5 E042 19.4  
Between **FL150 & FL70**

**PETUM**  
N45 24.0 E042 36.9  
Between **FL160 & FL60**



① 063° to ARP between 11.3 NM and 4.9 NM do not fly SOUTH below FL60.

ALT/HEIGHT CONVERSION	
QNH	(QFE)
4440'	(2954' - 900m)
3460'	(1974' - 600m)
3130'	(1644' - 500m)

URMT/STW  
SHPAKOVSKOYE

JEPPESEN  
17 JUL 15 10-2A Eff 23 Jul

STAVROPOL, RUSSIA

STAR

ATIS  
134.2  
(Russian 128.82)

Apt Elev  
1486'

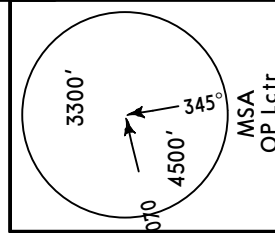
Alt Set: MM (hPa on request) QNH on request (QFE)  
Trans level: FL60 Trans alt: 4440' (2954')  
Flights over Stavropol city are prohibited below FL60.

DIPOR 2A [DIPO2A], GIRTI 2A [GIRT2A]

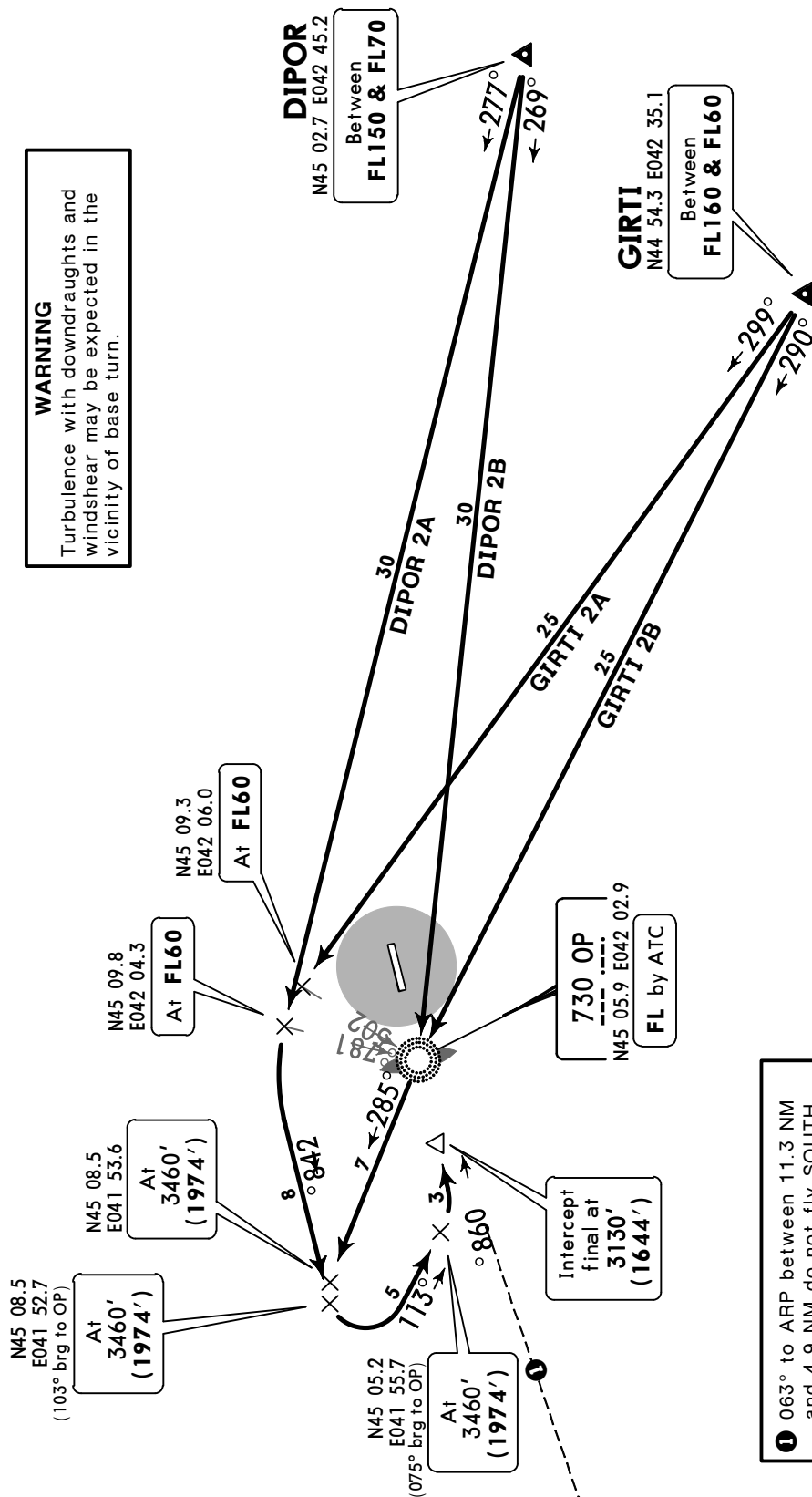
DIPOR 2B [DIPO2B], GIRTI 2B [GIRT2B]

BY ATC

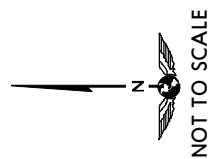
RWY 07 ARRIVALS



**WARNING**  
Turbulence with downdraughts and windshear may be expected in the vicinity of base turn.



ALT/HEIGHT CONVERSION	
QNH	(QFE)
4440'	(2954' - 900m)
3460'	(1974' - 600m)
3130'	(1644' - 500m)



① 063° to ARP between 11.3 NM and 4.9 NM do not fly SOUTH below FL60.

**URMT/STW**  
**SHPAKOVSKOYE**

**JEPPESEN**

**STAVROPOL, RUSSIA**

2 SEP 16

**10-2B**

**Eff 15 Sep**

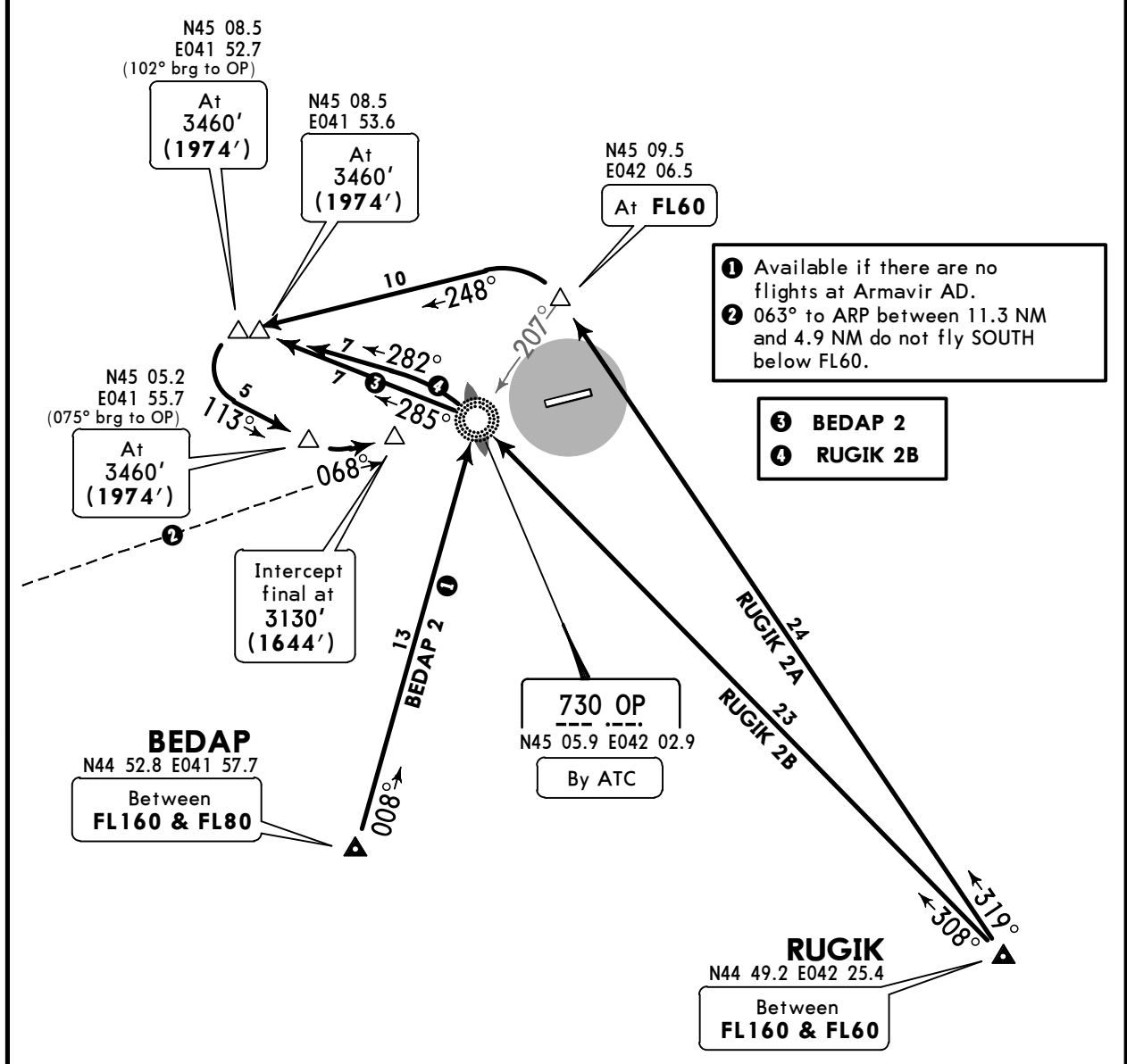
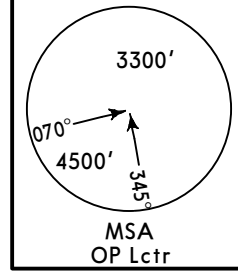
**STAR**

ATIS <b>134.200</b> ( Russian <b>128.825</b> )	Apt Elev <b>1486'</b>	Alt Set: MM (hPa on request) QNH on request (QFE) Trans level: FL60 Trans alt: 4440' (2954') 1. Turbulence with downdraughts and windshear may be EXPECTED in the vicinity of base turn. 2. Flights over Stavropol city are prohibited below FL60.
--	--------------------------	---

**RUGIK 2A [RUGI2A]**

**BEDAP 2, RUGIK 2B [RUGI2B]**  
BY ATC

**RWY 07 ARRIVALS**



ALT/HEIGHT CONVERSION	
QNH	(QFE)
4440'	(2954' - 900m)
3460'	(1974' - 600m)
3130'	(1644' - 500m)

**URMT/STW**  
**SHPAKOVSKOYE**

**JEPPESEN**

**STAVROPOL, RUSSIA**

2 SEP 16

**10-2C**

**Eff 15 Sep**

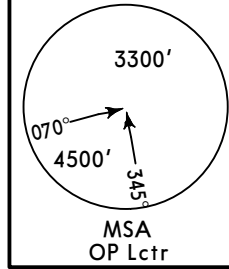
**STAR**

ATIS  
**134.200**  
( Russian 128.825 )

Apt Elev  
**1486'**

Alt Set: MM (hPa on request) QNH on request (QFE)  
Trans level: FL60 Trans alt: 4440' (2954')  
1. Turbulence with downdraughts and windshear may be EXPECTED in the vicinity of base turn.  
2. Flights over Stavropol city are prohibited below FL60.

**LEGNA 2**  
**NETMI 2**  
**PARAT 2**  
**RWY 07 ARRIVALS**

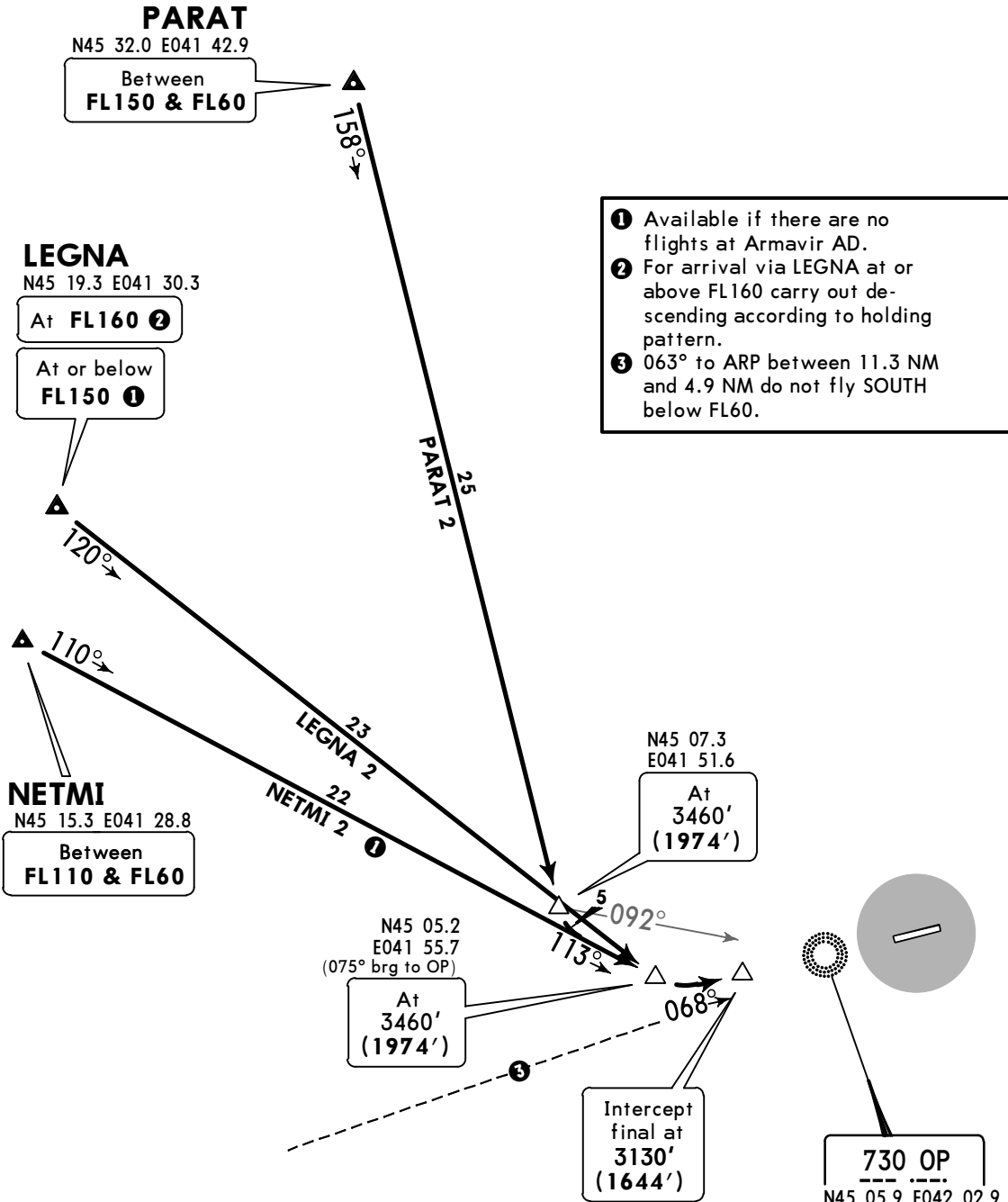


**PARAT**  
N45 32.0 E041 42.9  
Between  
**FL150 & FL60**

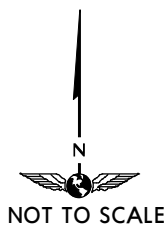
**LEGNA**  
N45 19.3 E041 30.3  
At **FL160** ②  
At or below  
**FL150** ①

**NETMI**  
N45 15.3 E041 28.8  
Between  
**FL110 & FL60**

- ① Available if there are no flights at Armavir AD.
- ② For arrival via LEGNA at or above FL160 carry out descending according to holding pattern.
- ③ 063° to ARP between 11.3 NM and 4.9 NM do not fly SOUTH below FL60.



ALT/HEIGHT CONVERSION	
QNH	(QFE)
4440'	(2954' - 900m)
3460'	(1974' - 600m)
3130'	(1644' - 500m)



**URMT/STW**  
**SHPAKOVSKOYE**

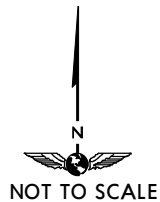
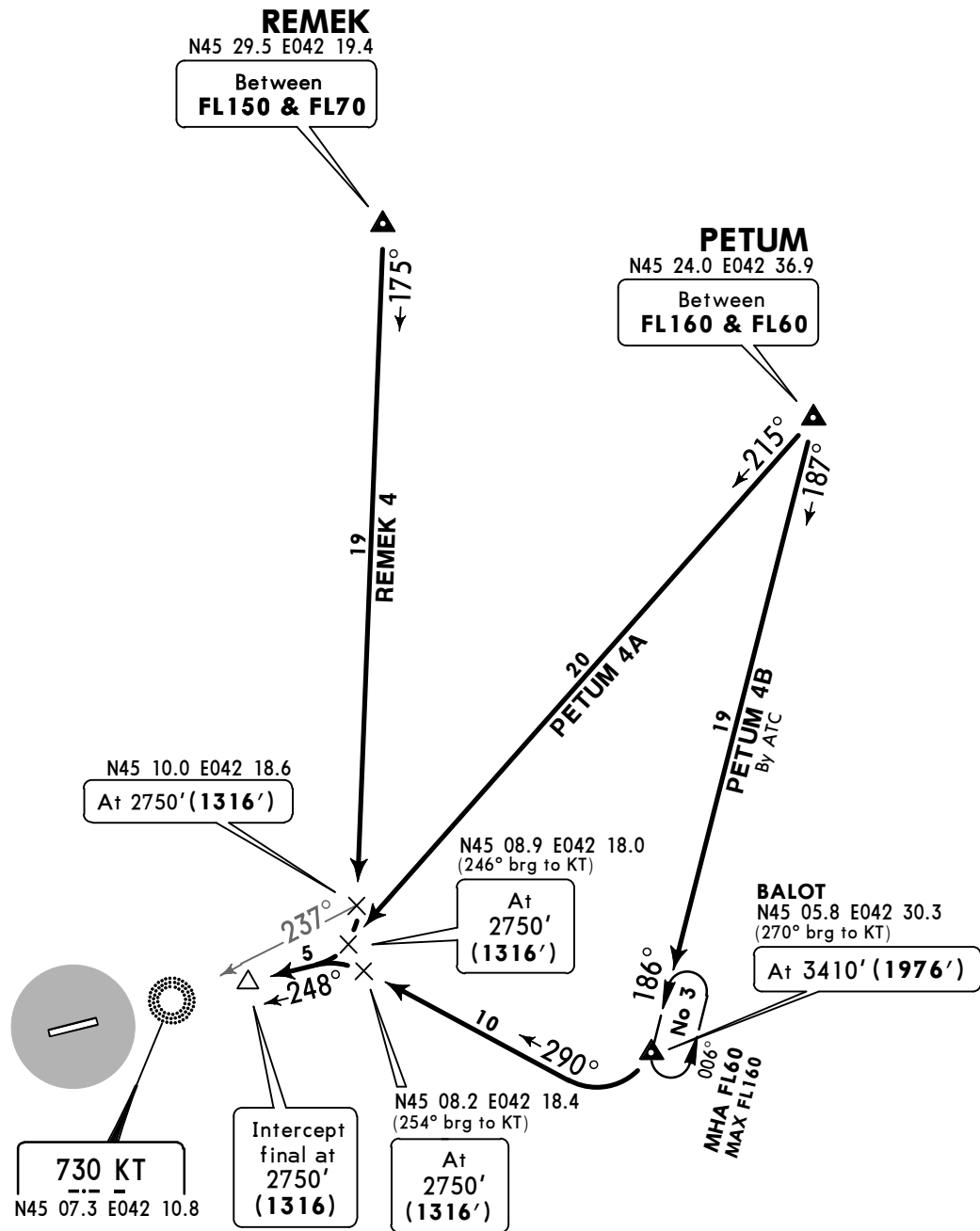
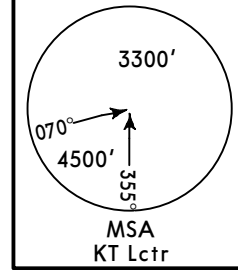
**JEPPESEN**  
17 JUL 15 (10-2D) Eff 23 Jul

**STAVROPOL, RUSSIA**

**STAR**

ATIS <b>134.2</b> ( Russian 128.82)	Apt Elev <b>1486'</b>	Alt Set: MM (hPa on request) QNH on request (QFE) Trans level: FL60 Trans alt: 4440' (3006') Flights over Stavropol city are prohibited below FL60.
---	--------------------------	---

**PETUM 4A [PETU4A]**  
**REMEK 4**  
**PETUM 4B [PETU4B]**  
BY ATC  
**RWY 25 ARRIVALS**



ALT/HEIGHT CONVERSION	
QNH	(QFE)
4440'	(3006' - 900m)
3410'	(1976' - 600m)
2750'	(1316' - 400m)

**URMT/STW**  
**SHPAKOVSKOYE**

**JEPPESEN**  
17 JUL 15 **(10-2E)** **Eff 23 Jul**

**STAVROPOL, RUSSIA**

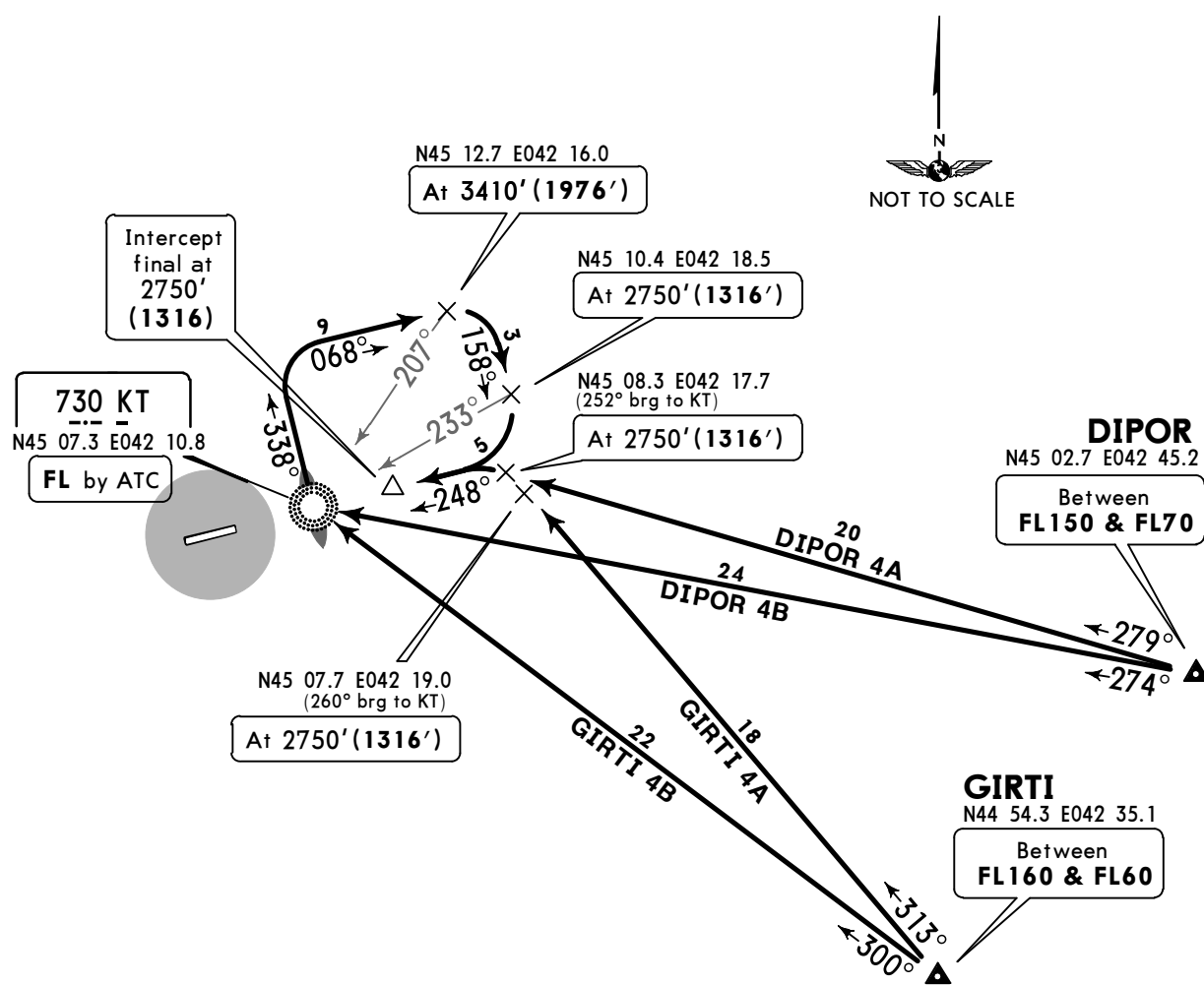
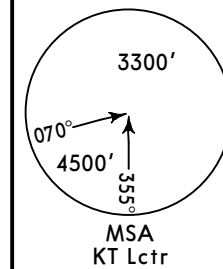
**STAR**

ATIS <b>134.2</b> (Russian 128.82)	Apt Elev <b>1486'</b>	Alt Set: MM (hPa on request) QNH on request <b>(QFE)</b> Trans level: FL60 Trans alt: 4440' <b>(3006')</b> Flights over Stavropol city are prohibited below FL60.
--	--------------------------	---

**DIPOR 4A [DIPO4A]**  
**GIRTI 4A [GIRT4A]**

**DIPOR 4B [DIPO4B]**  
**GIRTI 4B [GIRT4B]**  
BY ATC

**RWY 25 ARRIVALS**



ALT/HEIGHT CONVERSION	
QNH	(QFE)
4440'	(3006' - 900m)
3410'	(1976' - 600m)
2750'	(1316' - 400m)



**URMT/STW**  
**SHPAKOVSKOYE**

**JEPPESEN**  
17 JUL 15 **10-2F** **Eff 23 Jul**

**STAVROPOL, RUSSIA**  
**STAR**

ATIS  
**134.2**  
( Russian 128.82)

Apt Elev  
**1486'**

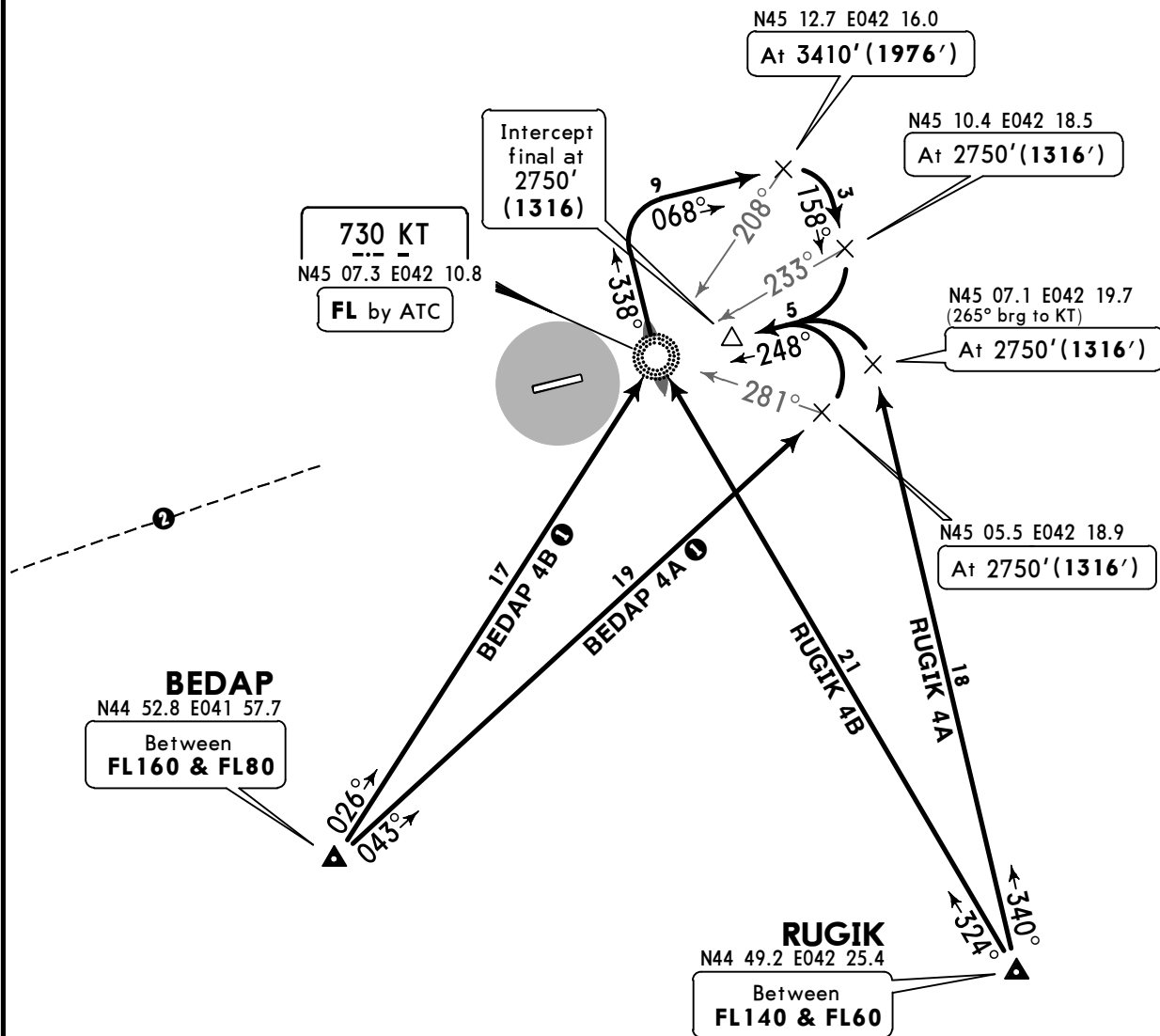
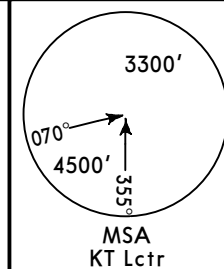
Alt Set: MM (hPa on request) QNH on request **(QFE)**  
Trans level: FL60 Trans alt: 4440' **(3006')**  
Flights over Stavropol city are prohibited below FL60.

**RUGIK 4A [RUGI4A]**

**BEDAP 4A [BEDA4A] ①, BEDAP 4B [BEDA4B] ①**

**RUGIK 4B [RUGI4B]**  
BY ATC

**RWY 25 ARRIVALS**



- ① Available if there are no flights at Armavir AD.
- ② 063° to ARP between 11.3 NM and 4.9 NM do not fly SOUTH below FL60.



ALT/HEIGHT CONVERSION	
QNH	(QFE)
4440'	(3006' - 900m)
3410'	(1976' - 600m)
2750'	(1316' - 400m)

**URMT/STW**  
**SHPAKOVSKOYE**

**JEPPESEN**  
17 JUL 15 **(10-2G)** **Eff 23 Jul**

**STAVROPOL, RUSSIA**

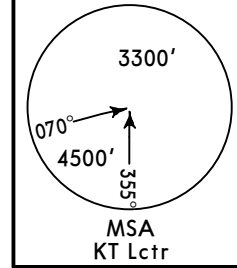
**STAR**

ATIS  
**134.2**  
( Russian 128.82)

Apt Elev  
**1486'**

Alt Set: MM (hPa on request) QNH on request **(QFE)**  
Trans level: FL60 Trans alt: 4440' **(3006')**  
Flights over Stavropol city are prohibited below FL60.

**LEGNA 4**  
**NETMI 4**  
**PARAT 4**  
**RWY 25 ARRIVALS**



**PARAT**  
N45 32.0 E041 42.9  
Between  
**FL110 & FL60**

**1** Available if there are no flights at Armavir AD.

**LEGNA**  
N45 19.3 E041 30.3  
At **FL160**  
At or below  
**FL150 1**

**NETMI**  
N45 15.3 E041 28.8  
Between  
**FL110 & FL60**

31  
**PARAT 4**

N45 12.7 E042 16.2  
At **3410' (1976')**

N45 12.5 E042 17.3  
At **3410' (1976')**

34  
**LEGNA 4**  
33  
**NETMI 4 1**

N45 12.7 E042 16.0  
At **3410' (1976')**

207°  
215°  
208°  
158°  
233°  
248°

**730 KT**  
N45 07.3 E042 10.8

Intercept  
final at  
**2750' (1316)**

N45 10.4 E042 18.5  
At **2750' (1316')**



ALT/HEIGHT CONVERSION	
QNH	(QFE)
4440'	(3006' - 900m)
3410'	(1976' - 600m)
2750'	(1316' - 400m)

**URMT/STW**  
**SHPAKOVSKOYE**

**JEPPESEN**  
2 SEP 16 **(10-2H)** Eff 15 Sep

**STAVROPOL, RUSSIA**

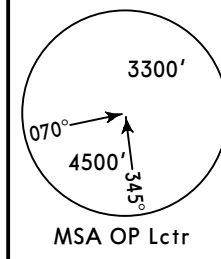
**STAR**

ATIS  
**134.200**  
(Russian 128.825)

Apt Elev  
**1486'**

Alt Set: MM (hPa on request) QNH on request (QFE)  
Trans level: FL60 Trans alt: 4440' (2954')  
1. Flights over Stavropol city are prohibited from ground up to FL60 by IMC.  
2. If ceiling is 600m or more and visibility is 10km or more visual approach on request is permitted.  
If ceiling is less than 600m and visibility is less than 10km decent shall be carried out by the procedure out of turn.

**PETUM 2D [PETU2D]**  
**REMEK 2D [REME2D]**  
**RWY 07 ARRIVALS**  
**BY ATC**  
**WITHOUT RADAR CONTROL**



**REMEK**  
N45 29.5 E042 19.4  
Between  
**FL160 & FL60**

**PETUM**  
N45 24.0 E042 36.9  
Between  
**FL160 & FL60**

② 063° to ARP between 11.3 NM and 4.9 NM do not fly SOUTH below FL60.

①  
**730 OP**  
N45 05.9 E042 02.9  
At 4440' (2954')

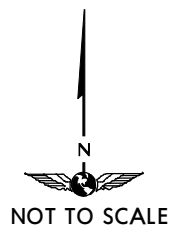
N45 08.5 E041 52.7 (102° brg to OP)  
At 3460' (1974')

N45 08.5 E041 53.6  
At 3460' (1974')

N45 05.2 E041 55.7 (075° brg to OP)  
At 3460' (1974')

On final approach Intercept final at 3130' (1644')

ALT/HEIGHT CONVERSION	
QNH	(QFE)
4440'	(2954' - 900m)
3460'	(1974' - 600m)
3130'	(1644' - 500m)



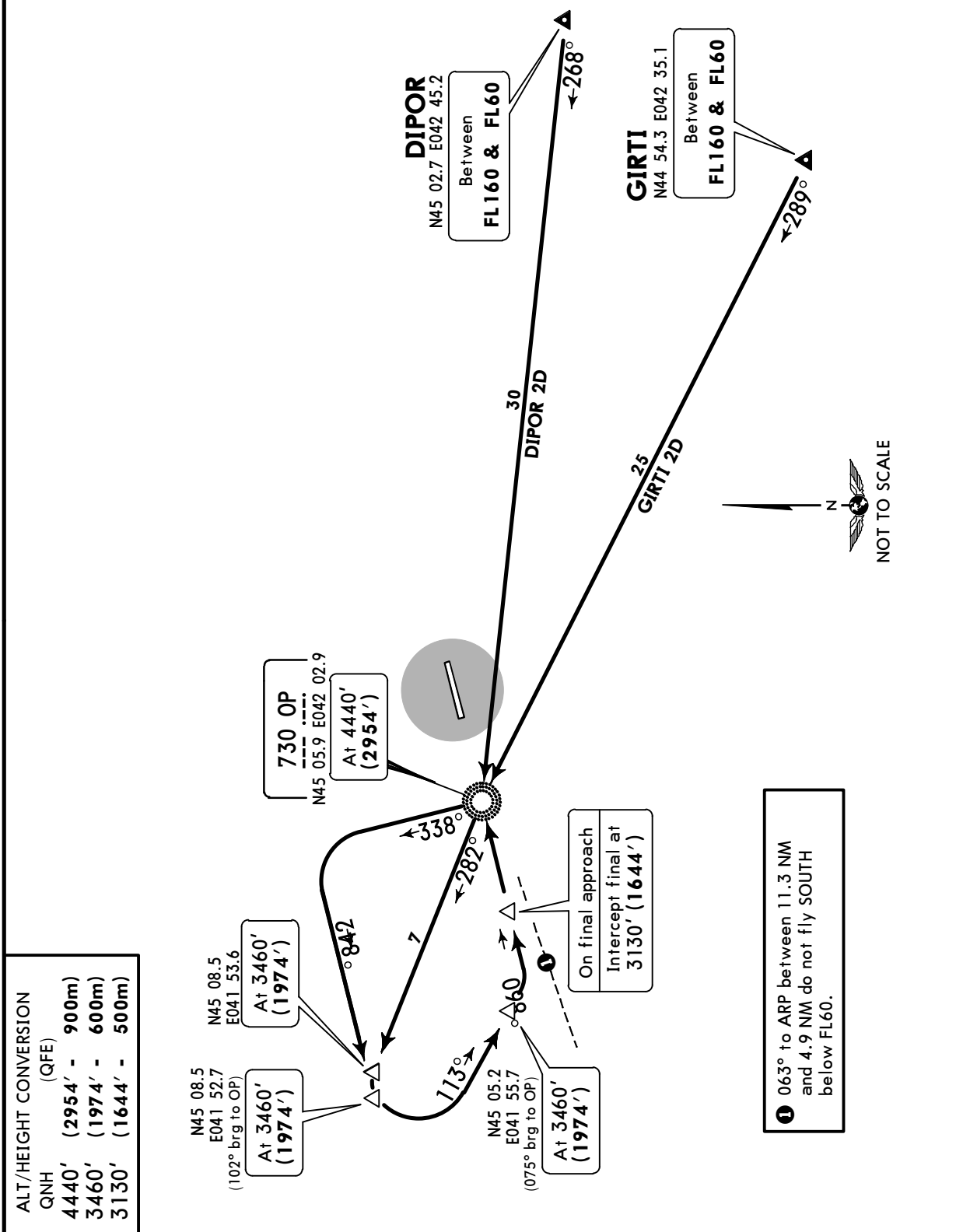
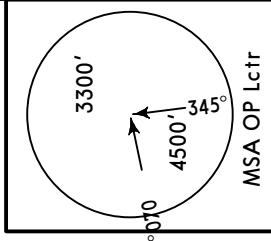
**URMT/STW**  
**SHPAKOVSKOYE**

**JEPPESEN**  
2 SEP 16 **10-2J** Eff 15 Sep

**STAVROPOL, RUSSIA**  
**STAR**

ATIS <b>134.200</b> (Russian 128.825)	Apt Elev <b>1486'</b>	Alt Set: MM (hPa on request)      QNH on request (QFE) Trans level: FL60      Trans alt: 4440' (2954') 1. Flights over Stavropol city are prohibited from ground up to FL60 by IMC. 2. If ceiling is 600m or more and visibility is 10km or more visual approach on request is permitted. If ceiling is less than 600m and visibility is less than 10km decent shall be carried out by the procedure out of turn.
---	--------------------------	---

**DIPOR 2D [DIPO2D]**  
**GIRTI 2D [GIRT2D]**  
**RWY 07 ARRIVALS**  
BY ATC  
WITHOUT RADAR CONTROL



**URMT/STW**  
**SHPAKOVSKOYE**

**JEPPESEN**  
2 SEP 16 **(10-2K)** Eff 15 Sep

**STAVROPOL, RUSSIA**

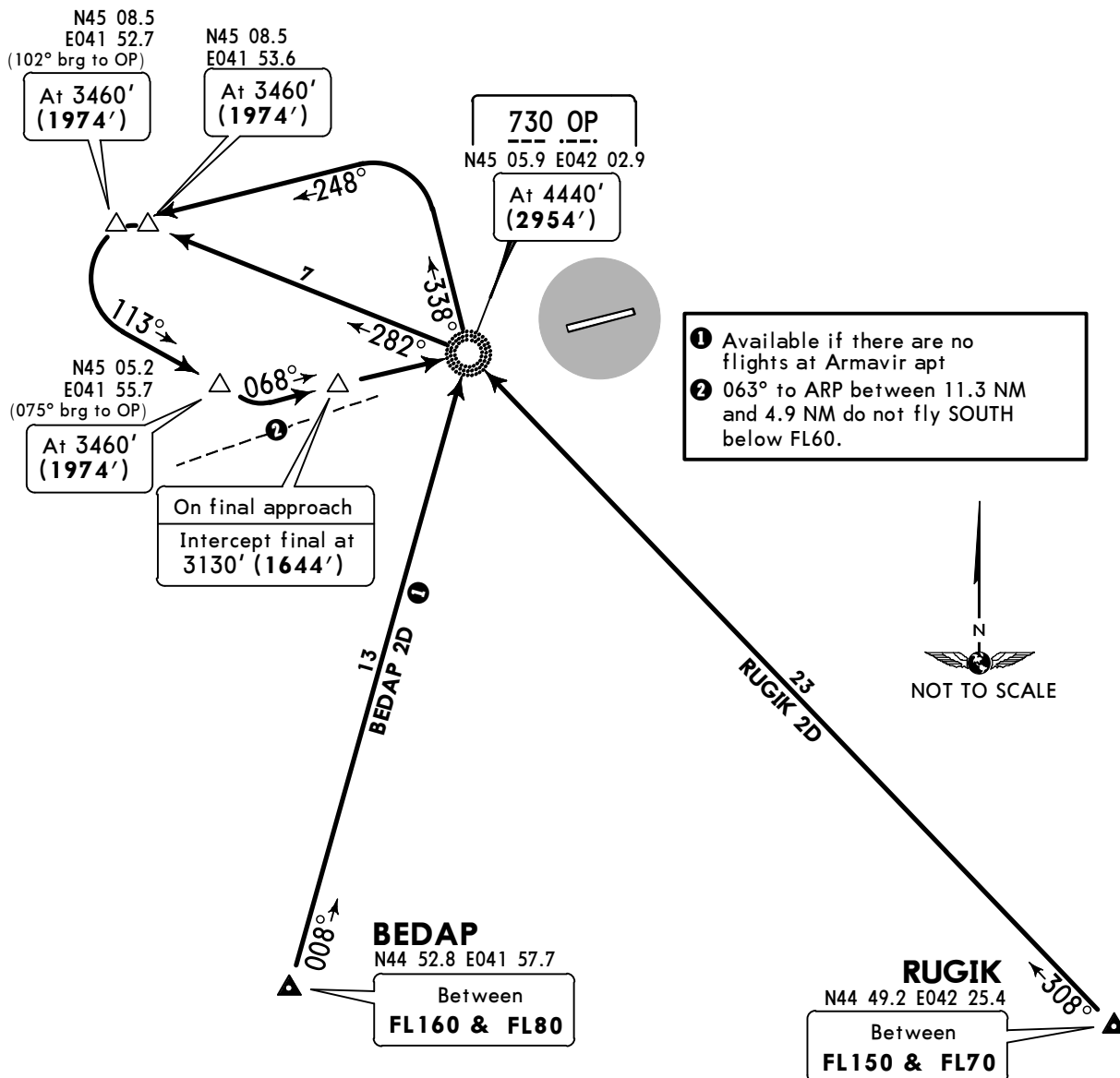
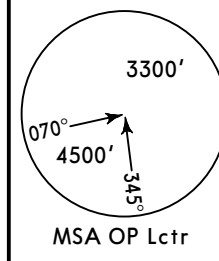
**STAR**

ATIS  
**134.200**  
(Russian 128.825)

Apt Elev  
**1486'**

Alt Set: MM (hPa on request) QNH on request (QFE)  
Trans level: FL60 Trans alt: 4440' (2954')  
1. Flights over Stavropol city are prohibited from ground up to FL60 by IMC.  
2. If ceiling is 600m or more and visibility is 10km or more visual approach on request is permitted.  
If ceiling is less than 600m and visibility is less than 10km descent shall be carried out by the procedure out of turn.

**BEDAP 2D [BEDA2D]**  
**RUGIK 2D [RUGI2D]**  
**RWY 07 ARRIVALS**  
**BY ATC**  
**WITHOUT RADAR CONTROL**



ALT/HEIGHT CONVERSION	
QNH	(QFE)
4440'	(2954' - 900m)
3460'	(1974' - 600m)
3130'	(1644' - 500m)

**URMT/STW**  
**SHPAKOVSKOYE**

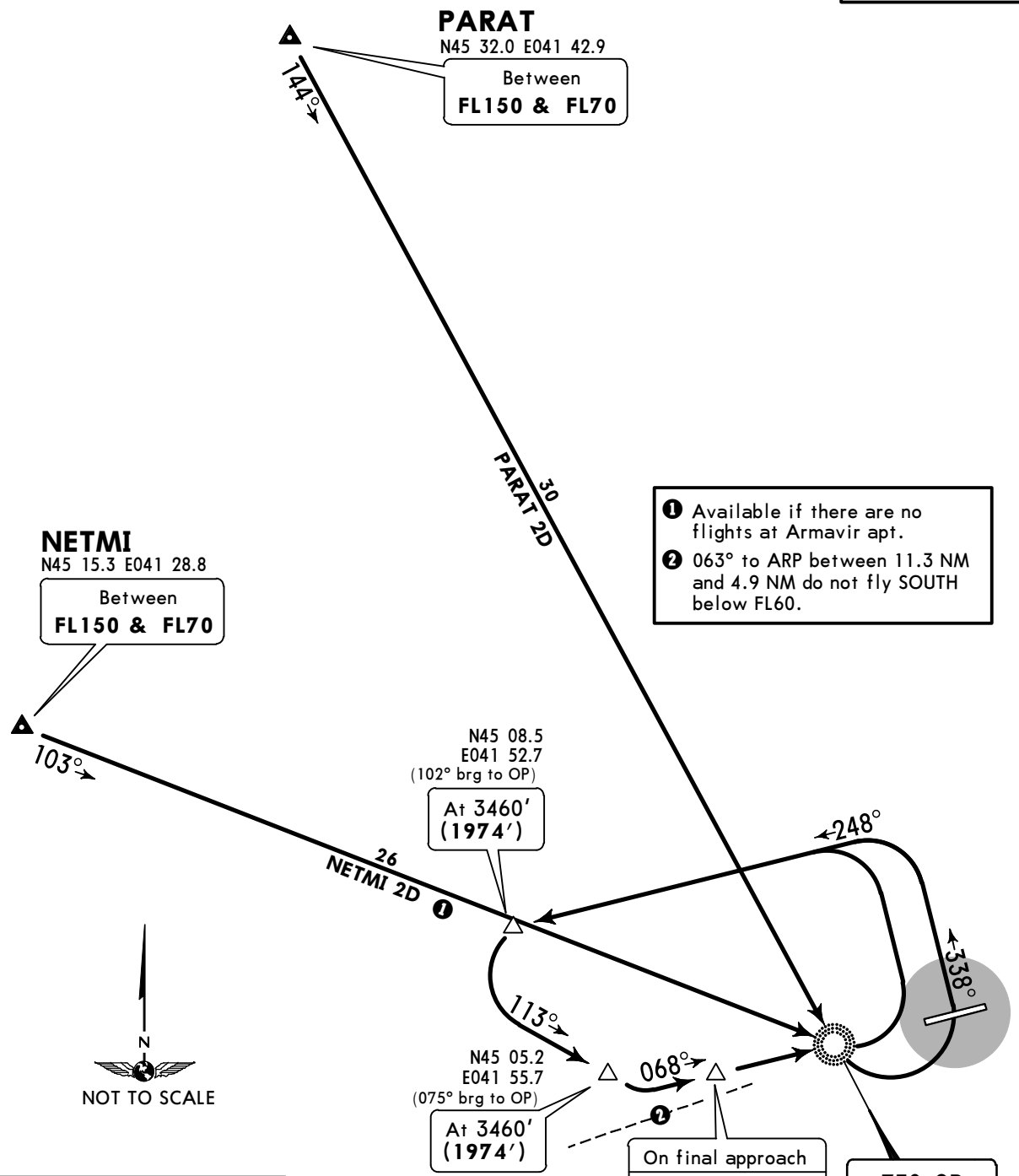
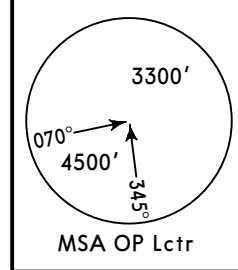
**JEPPESEN**  
2 SEP 16 **(10-2L)** Eff 15 Sep

**STAVROPOL, RUSSIA**

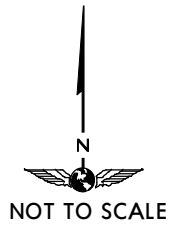
**STAR**

ATIS <b>134.200</b> (Russian 128.825)	Apt Elev <b>1486'</b>	Alt Set: MM (hPa on request)      QNH on request (QFE) Trans level: FL60    Trans alt: 4440' (2954') 1. Flights over Stavropol city are prohibited from ground up to FL60 by IMC. 2. If ceiling is 600m or more and visibility is 10km or more visual approach on request is permitted. If ceiling is less than 600m and visibility is less than 10km descent shall be carried out by the procedure out of turn.
---	--------------------------	--

**NETMI 2D [NETM2D]**  
**PARAT 2D [PARA2D]**  
**RWY 07 ARRIVALS**  
BY ATC  
WITHOUT RADAR CONTROL



- ① Available if there are no flights at Armavir apt.
- ② 063° to ARP between 11.3 NM and 4.9 NM do not fly SOUTH below FL60.



ALT/HEIGHT CONVERSION	
QNH	(QFE)
4440'	(2954' - 900m)
3460'	(1974' - 600m)
3130'	(1644' - 500m)

**URMT/STW**  
**SHPAKOVSKOYE**

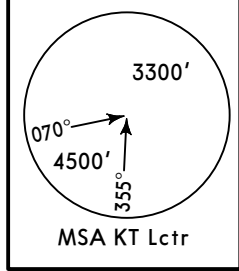
**JEPPESEN**  
2 SEP 16 **(10-2M)** Eff 15 Sep

**STAVROPOL, RUSSIA**

**STAR**

ATIS <b>134.200</b> (Russian 128.825)	Apt Elev <b>1486'</b>	Alt Set: MM (hPa on request)      QNH on request (QFE) Trans level: FL60      Trans alt: 4440' (3006') 1. Flights over Stavropol city are prohibited from ground up to FL60 by IMC. 2. If ceiling is 600m or more and visibility is 10km or more it is permitted to carry out visual approach on request.
---	--------------------------	--

**PETUM 4D [PETU4D]**  
**REMEK 4D [REME4D]**  
**RWY 25 ARRIVALS**  
**BY ATC**  
**WITHOUT RADAR CONTROL**



**REMEK**  
N45 29.5 E042 19.4  
Between  
**FL160 & FL60**

**PETUM**  
N45 24.0 E042 36.9  
Between  
**FL160 & FL60**

**730 KT**  
N45 07.3 E042 10.8  
At 4440'  
**(3006')**

**1**  
On final approach  
Intercept final  
at 2750'  
**(1316')**

N45 07.1 E042 19.7  
At 2750'  
**(1316')**

N45 04.3 E042 19.0  
At 3410'  
**(1976')**

ALT/HEIGHT CONVERSION	
QNH	(QFE)
4440'	(3006' - 900m)
3410'	(1976' - 600m)
2750'	(1316' - 400m)

**URMT/STW**  
**SHPAKOVSKOYE**

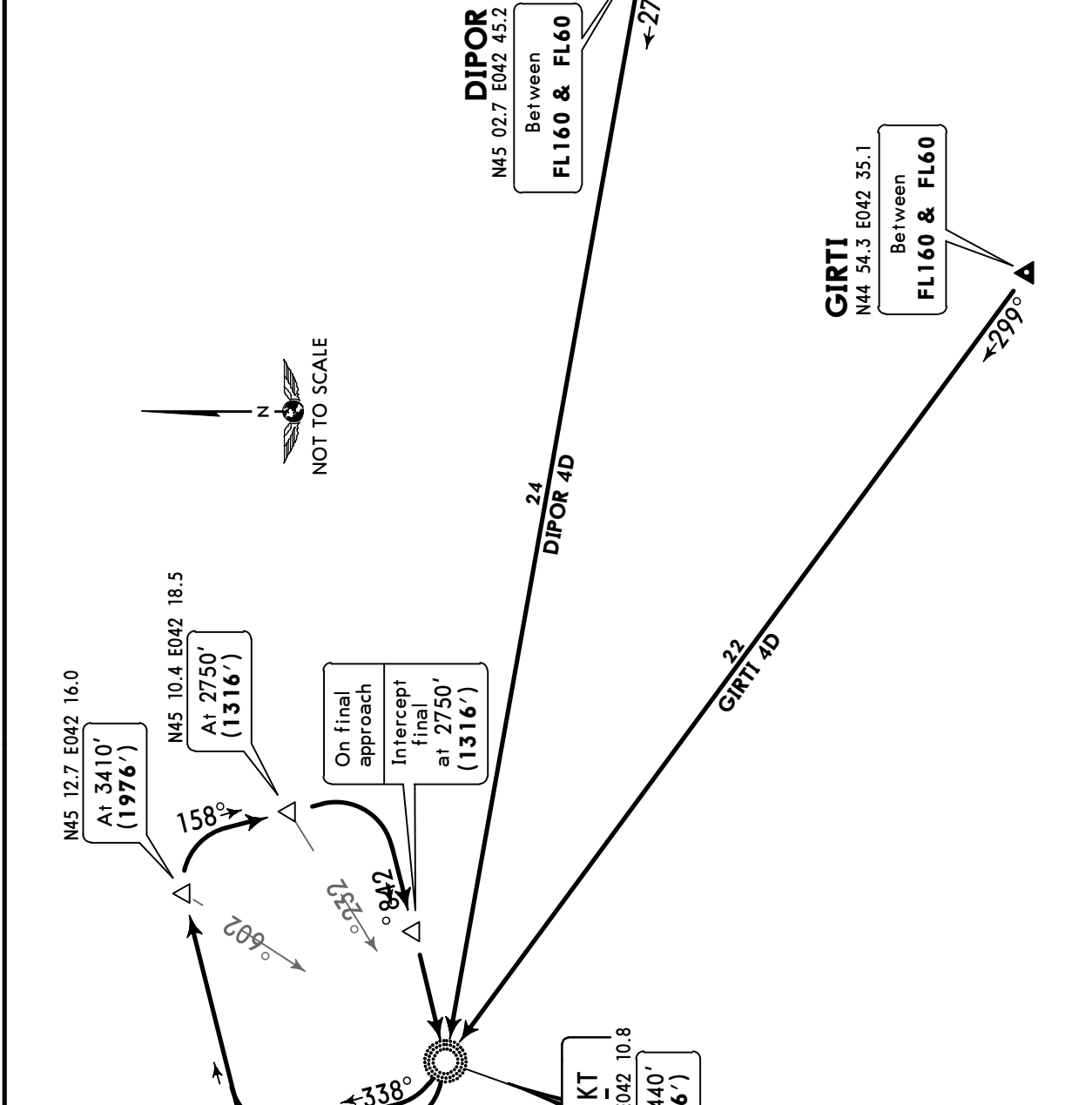
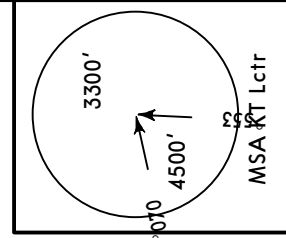
**JEPPESEN**  
2 SEP 16 **10-2N** Eff 15 Sep

**STAVROPOL, RUSSIA**

**STAR**

ATIS <b>134.200</b> (Russian 128.825)	Apt Elev <b>1486'</b>	Alt Set: MM (hPa on request)      QNH on request (QFE) Trans level: FL60      Trans alt: 4440' (3006') 1. Flights over Stavropol city are prohibited from ground up to FL60 by IMC. 2. If ceiling is 600m or more and visibility is 10km or more it is permitted to carry out visual approach on request.
---	--------------------------	--

**DIPOR 4D [DIP04D]**  
**GIRTI 4D [GIRT4D]**  
**RWY 25 ARRIVALS**  
BY ATC  
WITHOUT RADAR CONTROL



ALT/HEIGHT CONVERSION	
QNH	(QFE)
4440'	(3006' - 900m)
3410'	(1976' - 600m)
2750'	(1316' - 400m)



**URMT/STW**  
**SHPAKOVSKOYE**

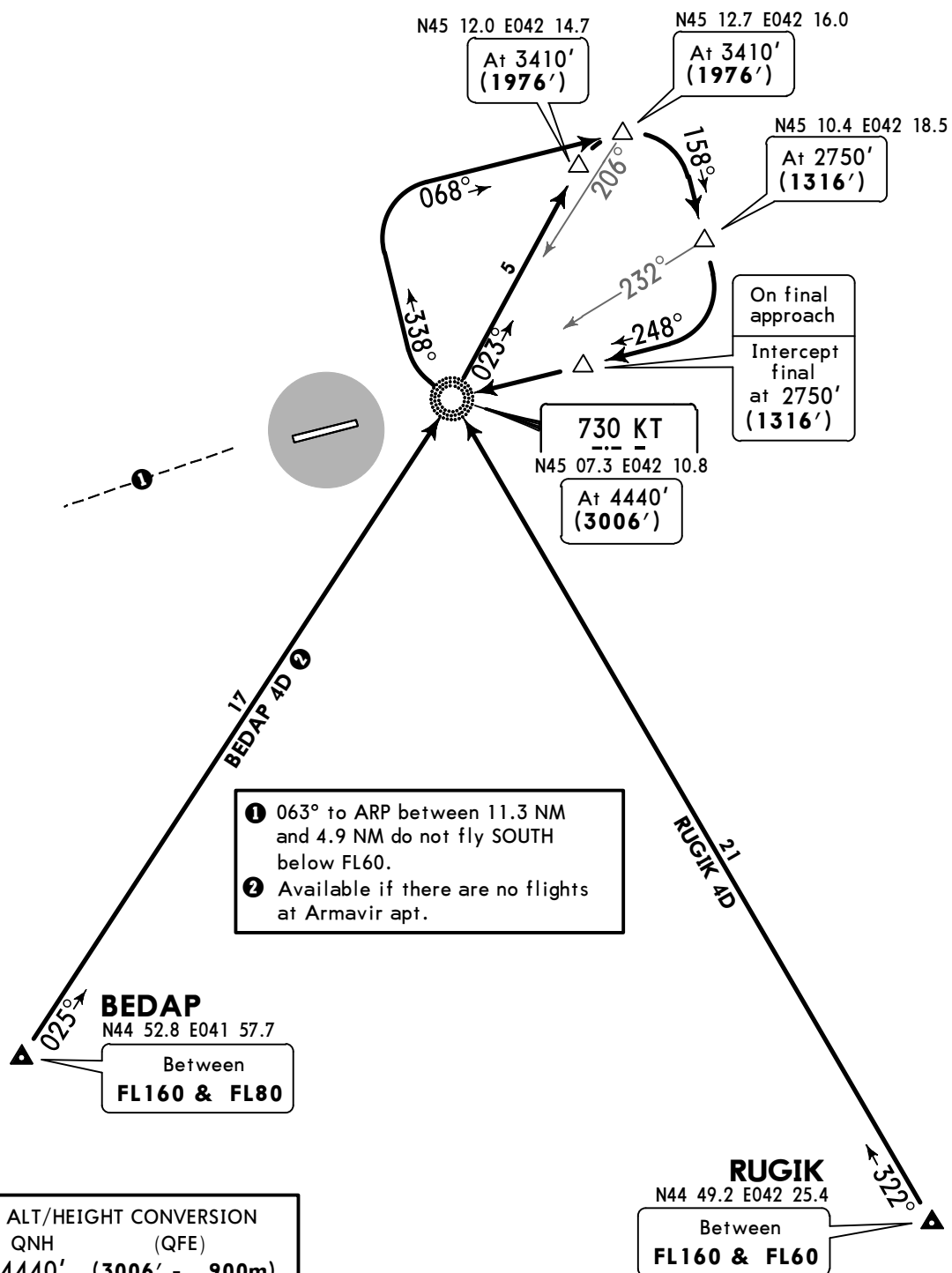
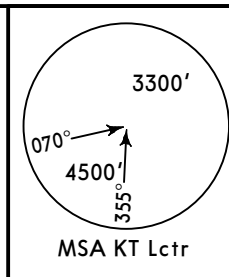
**JEPPESEN**  
2 SEP 16 **(10-2P)** Eff 15 Sep

**STAVROPOL, RUSSIA**

**STAR**

ATIS <b>134.200</b> (Russian 128.825)	Apt Elev <b>1486'</b>	Alt Set: MM (hPa on request)      QNH on request (QFE) Trans level: FL60      Trans alt: 4440' (3006') 1. Flights over Stavropol city are prohibited from ground up to FL60 by IMC. 2. If ceiling is 600m or more and visibility is 10km or more it is permitted to carry out visual approach on request.
---	--------------------------	--

**BEDAP 4D [BEDA4D]**  
**RUGIK 4D [RUGI4D]**  
**RWY 25 ARRIVALS**  
**BY ATC**  
**WITHOUT RADAR CONTROL**



- ① 063° to ARP between 11.3 NM and 4.9 NM do not fly SOUTH below FL60.
- ② Available if there are no flights at Armavir apt.

ALT/HEIGHT CONVERSION	
QNH	(QFE)
4440'	(3006' - 900m)
3410'	(1976' - 600m)
2750'	(1316' - 400m)

**URMT/STW**  
**SHPAKOVSKOYE**

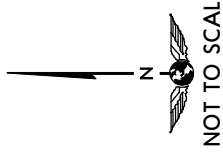
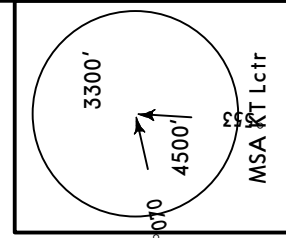
**JEPPESEN**  
2 SEP 16 **10-2Q** Eff 15 Sep

**STAVROPOL, RUSSIA**

**STAR**

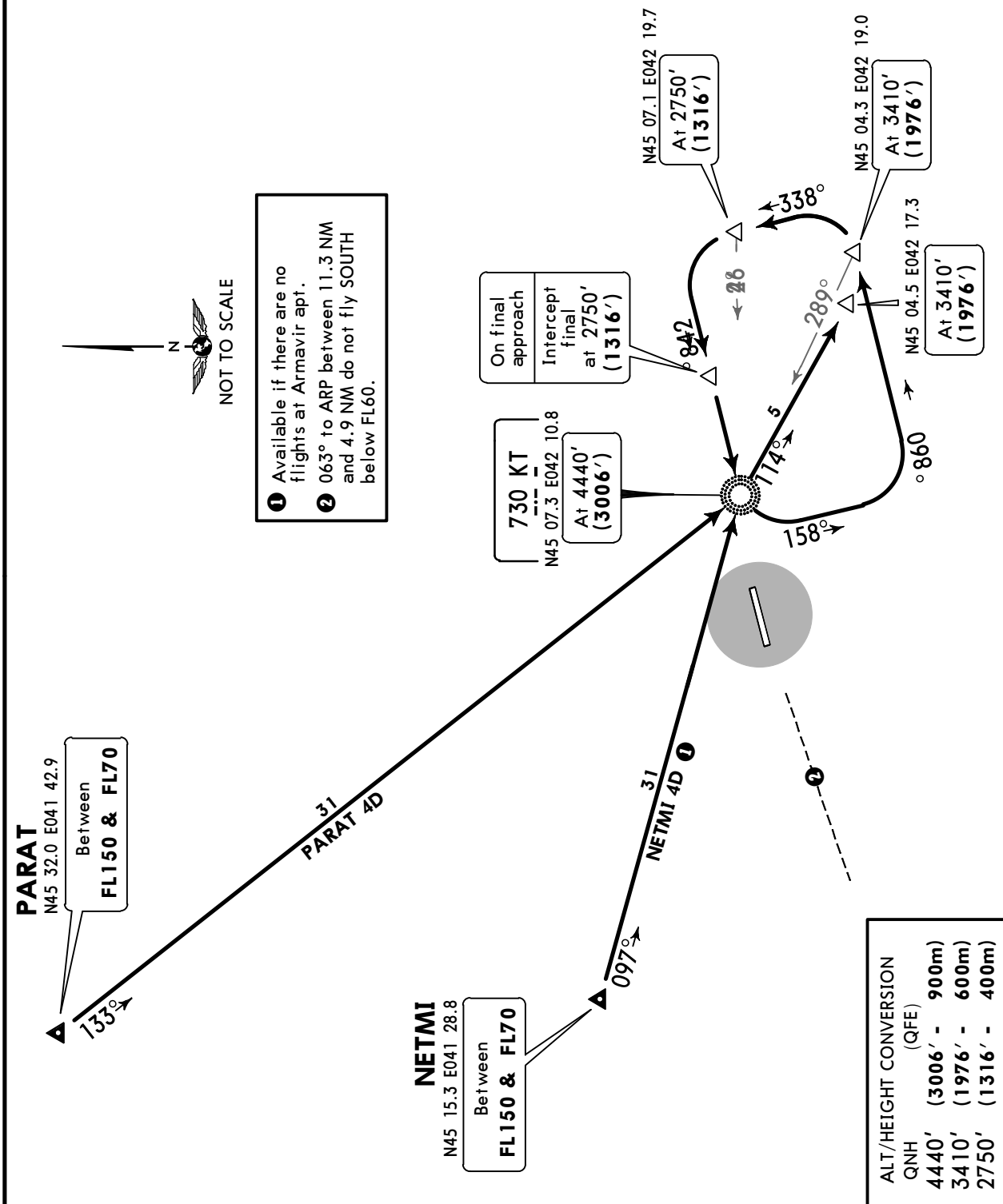
ATIS <b>134.200</b> (Russian 128.825)	Apt Elev <b>1486'</b>	Alt Set: MM (hPa on request)      QNH on request (QFE) Trans level: FL60      Trans alt: 4440' (3006') 1. Flights over Stavropol city are prohibited from ground up to FL60 by IMC. 2. If ceiling is 600m or more and visibility is 10km or more it is permitted to carry out visual approach on request.
---	--------------------------	--

**NETMI 4D [NETM4D]**  
**PARAT 4D [PARA4D]**  
**RWY 25 ARRIVALS**  
**BY ATC**  
**WITHOUT RADAR CONTROL**



NOT TO SCALE

- 1 Available if there are no flights at Armavir apt.
- 2 063° to ARP between 11.3 NM and 4.9 NM do not fly SOUTH below FL60.



**URMT/STW**  
**SHPAKOVSKOYE**

**JEPPESEN**

**STAVROPOL, RUSSIA**

2 SEP 16

10-2S

Eff 15 Sep

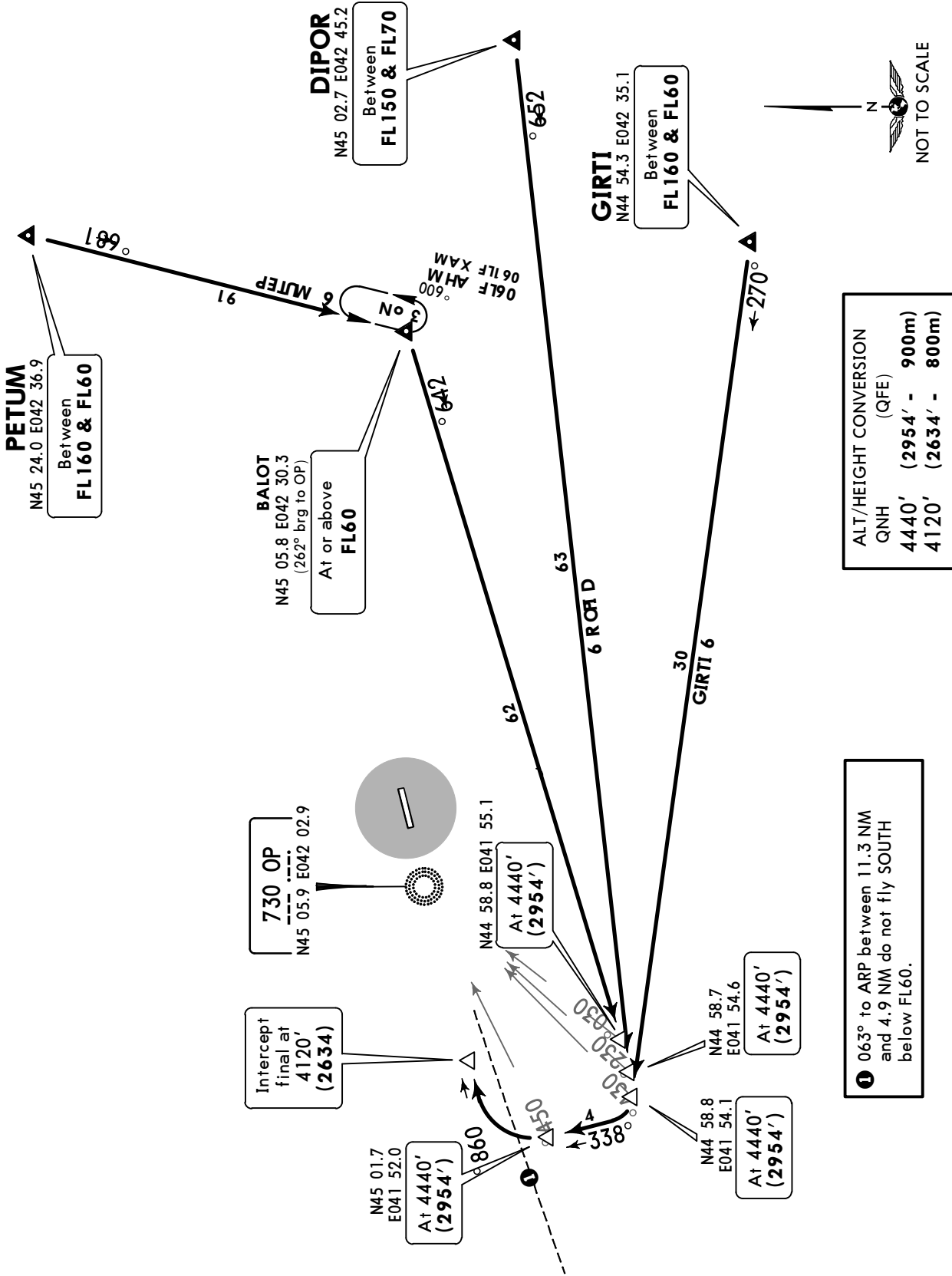
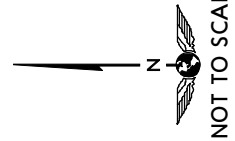
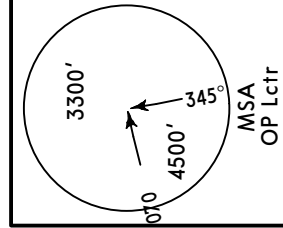
STAR

ATIS  
**134.200**  
(Russian 128.825)

Apt Elev  
**1486'**

Alt Set: MM (hPa on request) QNH on request (QFE)  
Trans level: FL60 Trans alt: 4440' (2954')  
1. Turbulence with downdraughts and windshear may be EXPECTED in the vicinity of base turn.  
2. Flights over Stavropol city are prohibited below FL60.

**DIPOR 6, GIRTI 6, PETUM 6**  
**RWY 07 ARRIVALS**  
BY ATC



**ALT/HEIGHT CONVERSION**  
QNH (QFE)  
4440' (2954' - 900m)  
4120' (2634' - 800m)

① 063° to ARP between 11.3 NM and 4.9 NM do not fly SOUTH below FL60.

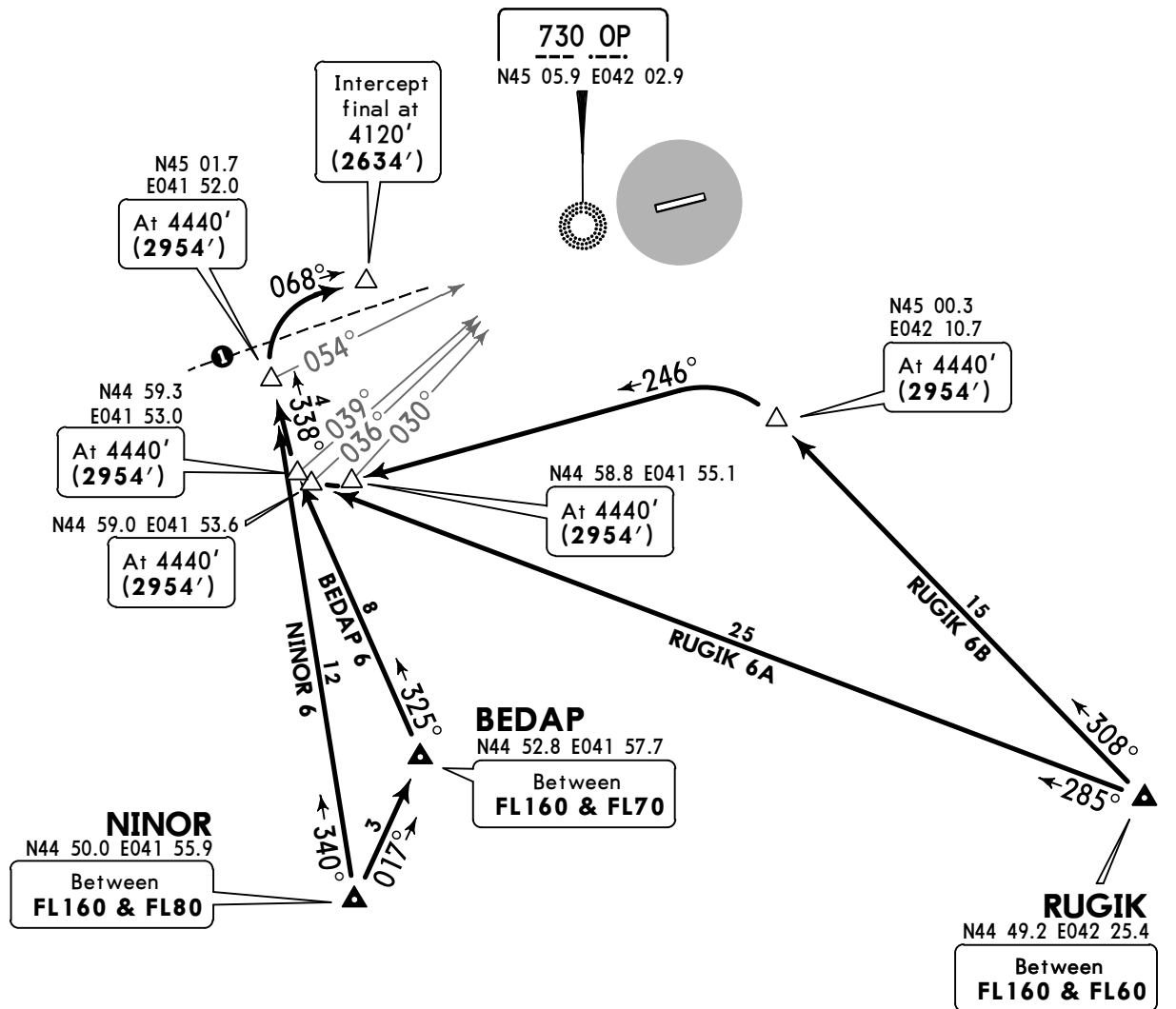
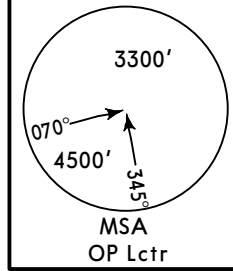
**URMT/STW**  
**SHPAKOVSKOYE**

**JEPPESEN**  
 2 SEP 16 **(10-2T)** **Eff 15 Sep**

**STAVROPOL, RUSSIA**  
**STAR**

ATIS <b>134.200</b> ( Russian 128.825 )	Apt Elev <b>1486'</b>	Alt Set: MM (hPa on request) QNH on request (QFE) Trans level: FL60 Trans alt: 4440' (2954') 1. Turbulence with downdraughts and windshear may be EXPECTED in the vicinity of base turn. 2. Flights over Stavropol city are prohibited below FL60.
---	--------------------------	---

**BEDAP 6, NINOR 6**  
**RUGIK 6A [RUGI6A]**  
**RUGIK 6B [RUGI6B]**  
**RWY 07 ARRIVALS**  
 BY ATC



**NINOR**  
 N44 50.0 E041 55.9  
 Between  
**FL160 & FL80**

**BEDAP**  
 N44 52.8 E041 57.7  
 Between  
**FL160 & FL70**

**RUGIK**  
 N44 49.2 E042 25.4  
 Between  
**FL160 & FL60**

① 063° to ARP between 11.3 NM and 4.9 NM do not fly SOUTH below FL60.



ALT/HEIGHT CONVERSION	
QNH	(QFE)
4440'	(2954' - 900m)
4120'	(2634' - 800m)

**URMT/STW**  
**SHPAKOVSKOYE**

**JEPPesen**

**STAVROPOL, RUSSIA**

2 SEP 16

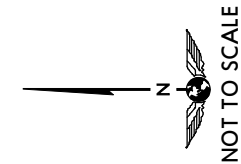
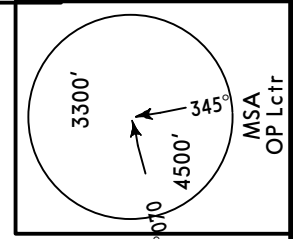
10-2U

Eff 15 Sep

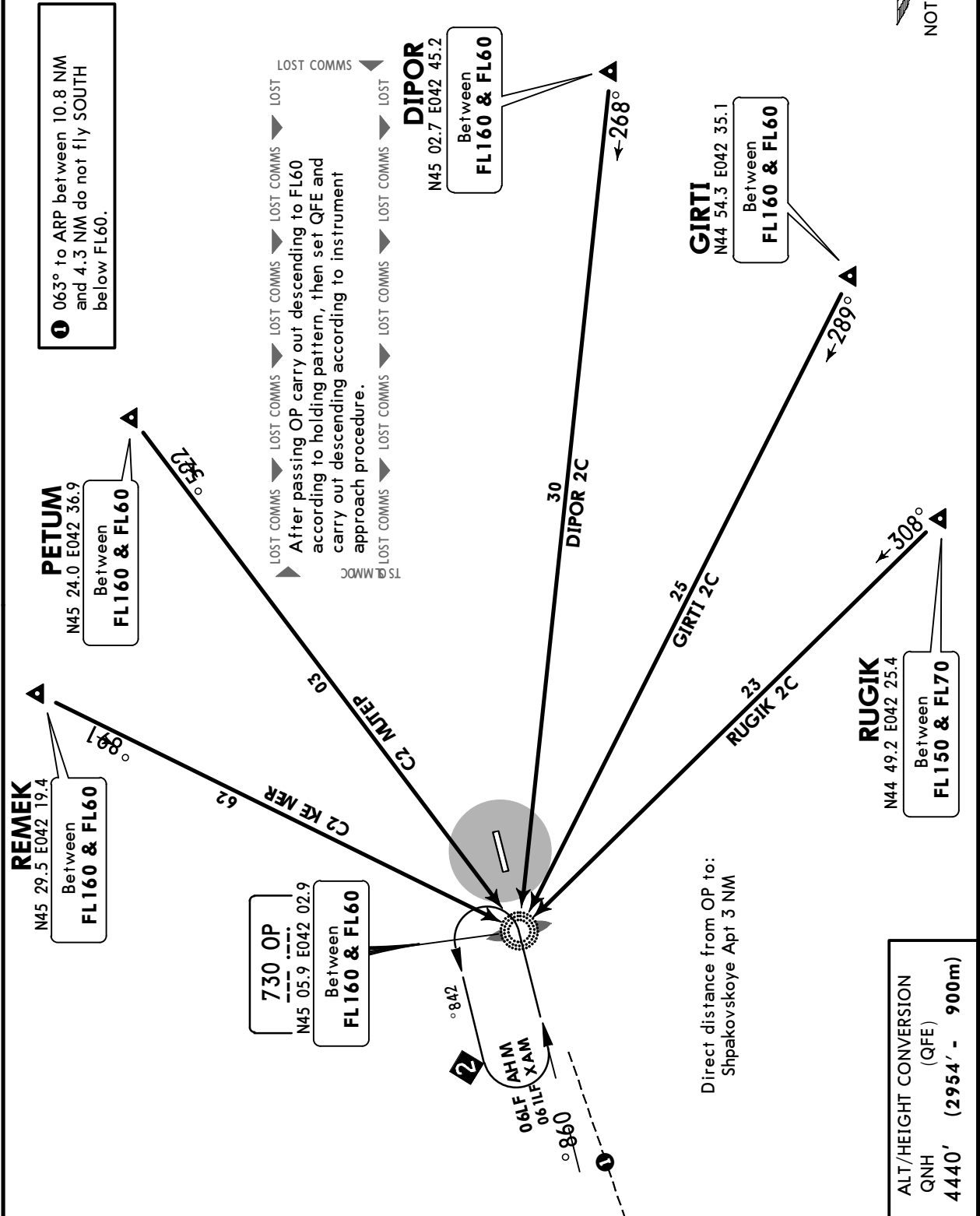
STAR

ATIS <b>134.200</b> (Russian 128.825)	Apt Elev <b>1486'</b>	Alt Set: MM (hPa on request) QNH on request (QFE) Trans level: FL60 Trans alt: 4440' (2954') Flights over Stavropol city are prohibited from GND up to FL60 by IMC
---	--------------------------	--

**DIPOR 2C [DIPO2C], GIRTI 2C [GIRT2C]**  
**PETUM 2C [PETU2C], REMEK 2C [REME2C]**  
**RUGIK 2C [RUGI2C]**  
**RWY 07 ARRIVALS**  
 ENTRY PROCEDURE INTO HOLDING AREA  
 PRIORITY APPROACH PROCEDURE  
 RADIO COMMUNICATION FAILURE  
 BY ATC



**1** 063° to ARP between 10.8 NM and 4.3 NM do not fly SOUTH below FL60.



**URMT/STW**  
**SHPAKOVSKOYE**

**JEPPESEN**

**STAVROPOL, RUSSIA**

2 SEP 16

10-2V

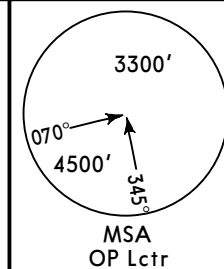
Eff 15 Sep

STAR

ATIS <b>134.200</b> ( Russian 128.825 )	Apt Elev <b>1486'</b>	Alt Set: MM (hPa on request) QNH on request (QFE) Trans level: FL60 Trans alt: 4440' (2954') Flights over Stavropol city are prohibited below FL60.
---	--------------------------	---

**BEDAP 2C[BEDA2C] , LEGNA 2C[LEGN2C]**  
**NETMI 2C[NETM2C] , PARAT 2C[PARA2C]**

**RWY 07 ARRIVALS**  
ENTRY PROCEDURE INTO HOLDING AREA  
PRIORITY APPROACH PROCEDURE  
RADIO COMMUNICATION FAILURE  
BY ATC



**PARAT**  
N45 32.0 E041 42.9  
Between  
**FL150 & FL70**

**LEGNA**  
N45 19.3 E041 30.3  
Between  
**FL150 & FL70**

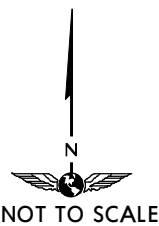
**NETMI**  
N45 15.3 E041 28.8  
Between  
**FL150 & FL70**

**730 OP**  
N45 05.9 E042 02.9  
Between  
**FL160 & FL60**

LOST COMMS ▼ LOST COMMS ▼ LOST COMMS ▼ LOST COMMS ▼ LOST  
After passing OP carry out descending to FL60 according to holding pattern, then set QFE and carry out descending according to instrument approach procedure.  
LOST COMMS ▼ LOST COMMS ▼ LOST COMMS ▼ LOST COMMS ▼ LOST

Direct distance from OP to:  
Shpakovskoye Apt 3 NM

- ① Available if there are no flights at Armavir AD.
- ② 063° to ARP between 10.8 NM and 4.3 NM do not fly SOUTH below FL60.



ALT/HEIGHT CONVERSION  
QNH (QFE)  
**4440' (2954' - 900m)**

**BEDAP**  
N44 52.8 E041 57.7  
Between  
**FL160 & FL80**

**URMT/STW**  
**SHPAKOVSKOYE**

**JEPPESEN**  
2 SEP 16 **10-2W** **Eff 15 Sep**

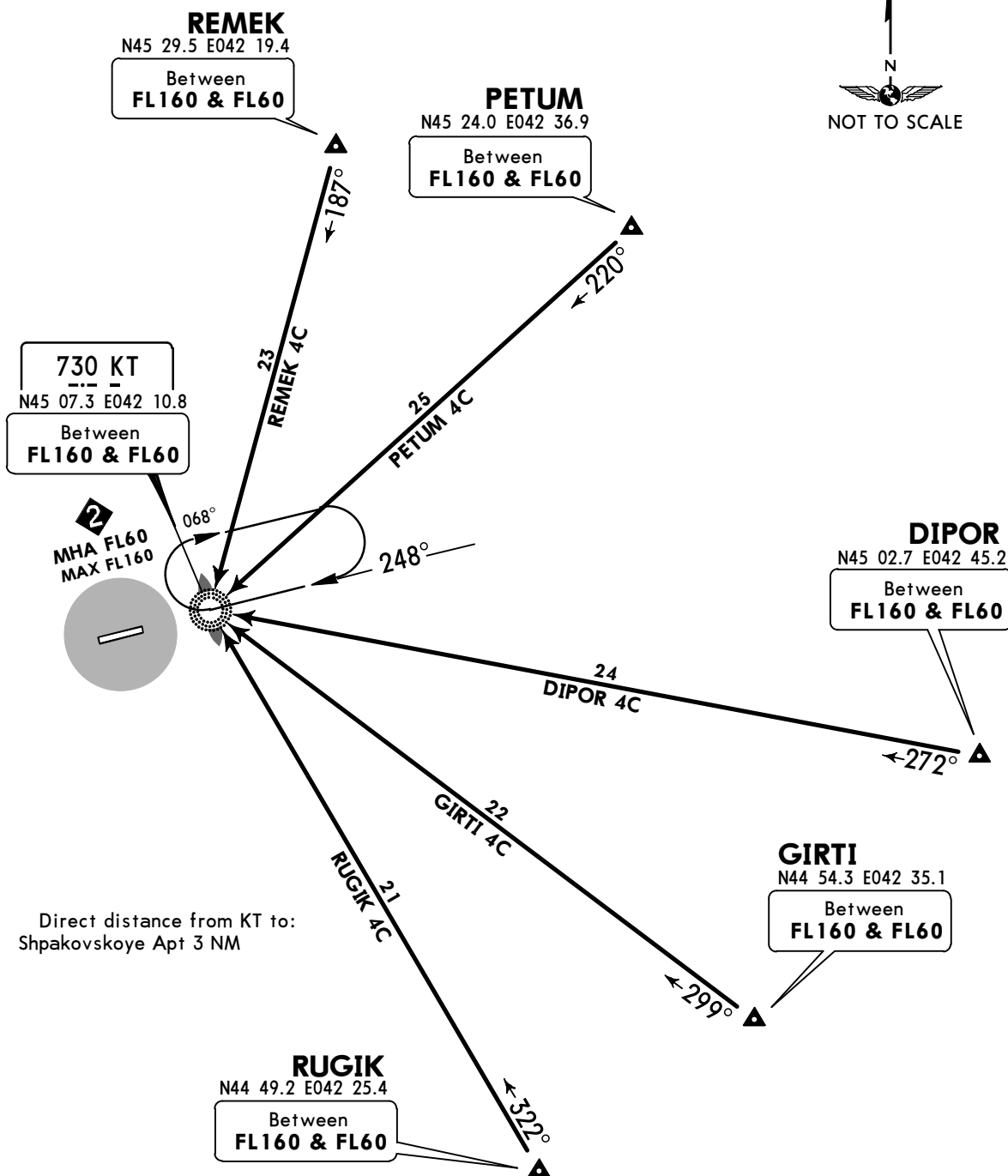
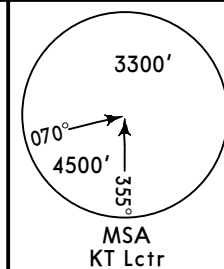
**STAVROPOL, RUSSIA**  
**STAR**

ATIS  
**134.200**  
( Russian 128.825)

Apt Elev  
**1486'**

Alt Set: MM (hPa on request) QNH on request (QFE)  
Trans level: FL60 Trans alt: 4440' (3006')  
Flights over Stavropol city are prohibited below FL60.

**DIPOR 4C [DIPO4C] , GIRTI 4C [GIRT4C]**  
**PETUM 4C [PETU4C] , REMEK 4C [REME4C]**  
**RUGIK 4C [RUGI4C]**  
**RWY 25 ARRIVALS**  
ENTRY PROCEDURE INTO HOLDING AREA  
PRIORITY APPROACH PROCEDURE  
RADIO COMMUNICATION FAILURE  
BY ATC



LOST COMMS ▼ LOST COMMS ▼ LOST COMMS ▼ LOST COMMS ▼ LOST  
After passing KT carry out descending to FL60 according to holding pattern, then set QFE and carry out descending according to instrument approach procedure.

ALT/HEIGHT CONVERSION  
QNH (QFE)  
**4440' (3006' - 900m)**

**URMT/STW**  
**SHPAKOVSKOYE**



**STAVROPOL, RUSSIA**

2 SEP 16

10-2X

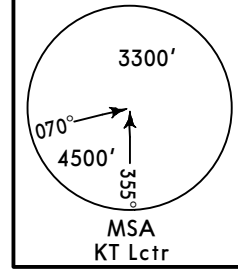
Eff 15 Sep

STAR

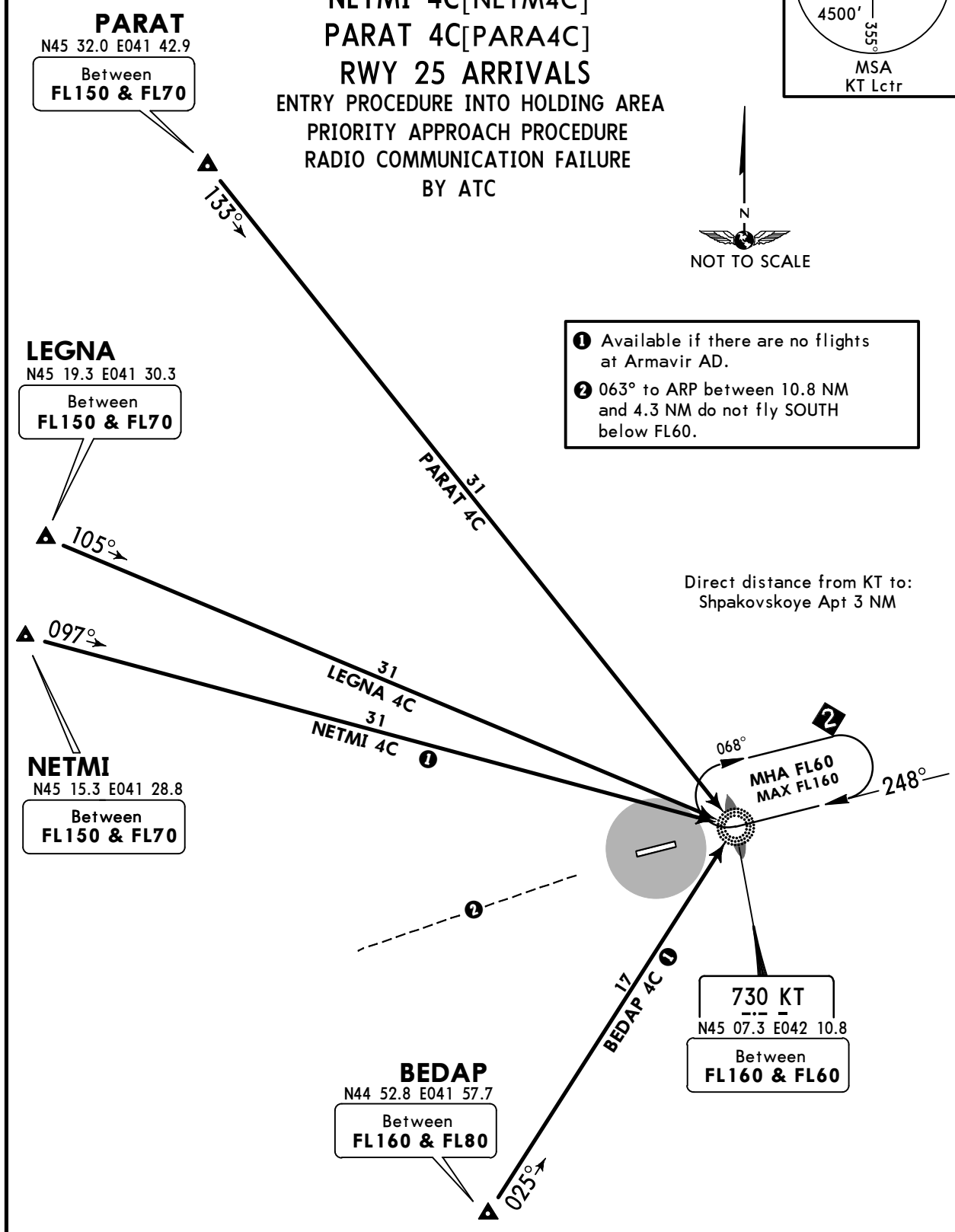
ATIS <b>134.200</b> (Russian 128.825)	Apt Elev <b>1486'</b>	Alt Set: MM (hPa on request) QNH on request Trans level: FL60 Trans alt: 4440' (3006') Flights over Stavropol city are prohibited below FL60.	(QFE)
---	--------------------------	---	-------

**BEDAP 4C [BEDA4C]**  
**LEGNA 4C [LEGN4C]**  
**NETMI 4C [NETM4C]**  
**PARAT 4C [PARA4C]**  
**RWY 25 ARRIVALS**

ENTRY PROCEDURE INTO HOLDING AREA  
PRIORITY APPROACH PROCEDURE  
RADIO COMMUNICATION FAILURE  
BY ATC



- 1 Available if there are no flights at Armavir AD.
- 2 063° to ARP between 10.8 NM and 4.3 NM do not fly SOUTH below FL60.



LOST COMMS ▼ LOST COMMS ▼ LOST COMMS ▼ LOST COMMS ▼ LOST  
 After passing KT carry out descending to FL60 according to holding pattern, then set QFE and carry out descending according to instrument approach procedure.  
 LOST COMMS ▼ LOST COMMS ▼ LOST COMMS ▼ LOST COMMS ▼ LOST

ALT/HEIGHT CONVERSION	
QNH	(QFE)
<b>4440'</b>	<b>(3006' - 900m)</b>



**URMT/STW**  
**SHPAKOVSKOYE**

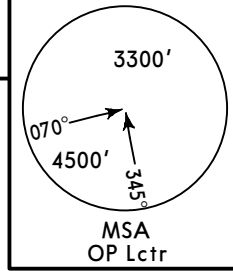
**JEPPESEN**  
4 SEP 15 **10-3** Eff 17 Sep

**STAVROPOL, RUSSIA**

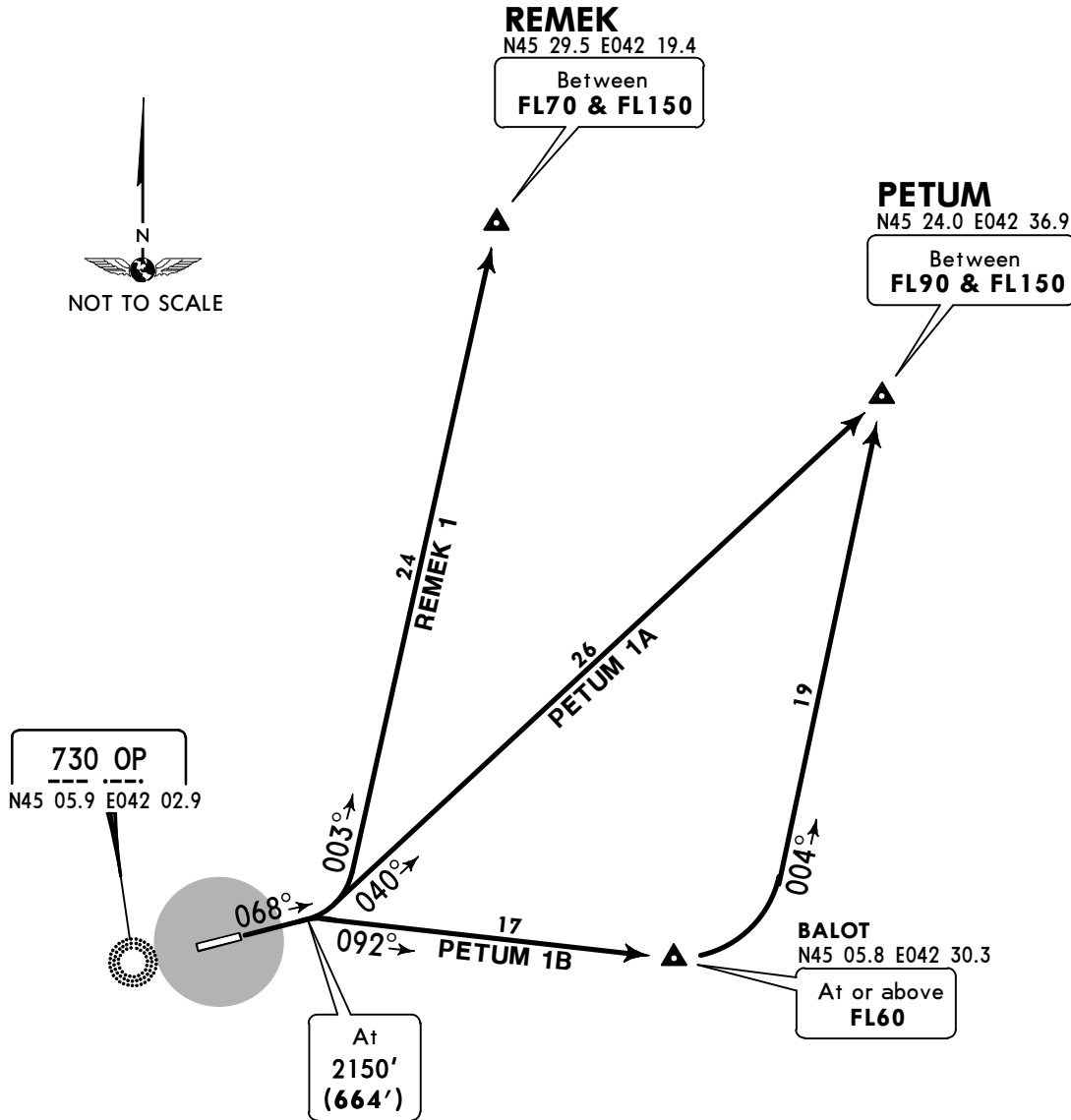
**SID**

Apt Elev  
**1486'**

QNH on request (QFE)  
Trans level: FL60 Trans alt: 4440' (2954')



**PETUM 1A [PETU1A]**  
**REMEK 1**  
**PETUM 1B [PETU1B]**  
BY ATC  
**RWY 07 DEPARTURES**



**PETUM 1A**

This SID requires a minimum climb gradient of 4.4%.

Gnd speed-KT	75	100	150	200	250	300
4.4% V/V (fpm)	334	446	668	891	1114	1337

**ALT/HEIGHT CONVERSION**

QNH	(QFE)
2150'	(664' - 200m)
4440'	(2954' - 900m)

SID	ROUTING
<b>PETUM 1A</b>	Climb on runway heading to 2150' (664'), turn LEFT, 040° track to PETUM, climbing to assigned FL.
<b>PETUM 1B</b>	Climb on runway heading to 2150' (664'), turn RIGHT, 092° track to BALOT climbing to assigned FL, then to PETUM.
<b>REMEK 1</b>	Climb on runway heading to 2150' (664'), turn LEFT, 003° track to REMEK, climbing to assigned FL.

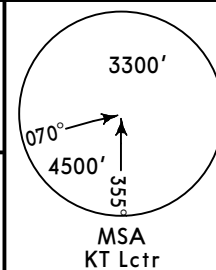
**URMT/STW**  
**SHPAKOVSKOYE**

**JEPPESSEN**  
4 SEP 15 **(10-3A)** Eff 17 Sep

**STAVROPOL, RUSSIA**  
**SID**

Apt Elev  
**1486'**

QNH on request **(QFE)**  
Trans level: FL60 Trans alt: 4440' **(3006')**  
Take-off to be carried out using noise abatement procedures for the area according to Flight Manual.  
Flights over Stavropol city are prohibited below FL60.



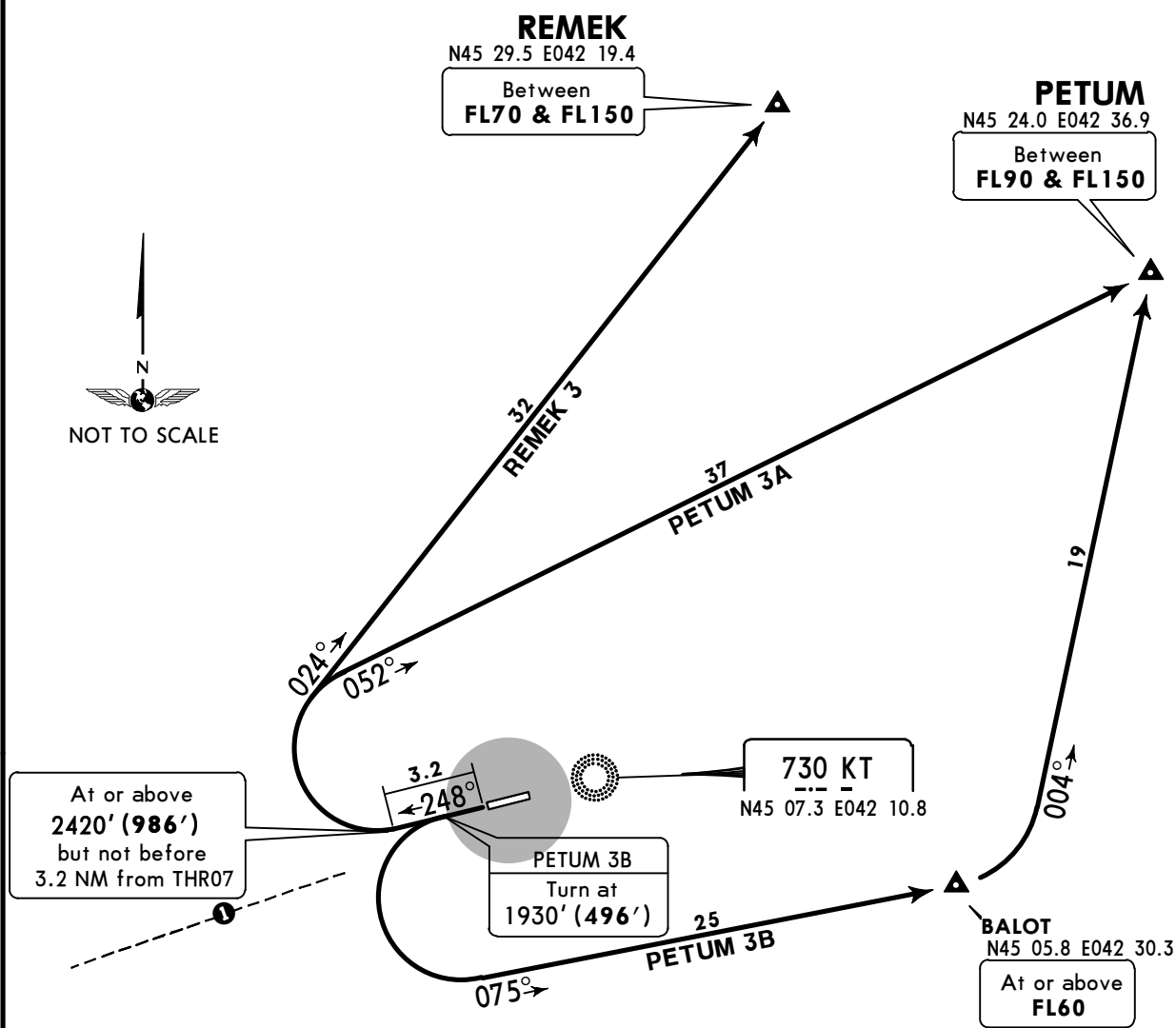
**PETUM 3A [PETU3A]**  
**REMEK 3**

**PETUM 3B [PETU3B]**  
BY ATC

**RWY 25 DEPARTURES**



NOT TO SCALE



ALT/HEIGHT CONVERSION	
QNH	(QFE)
1930'	(496' - 150m)
2420'	(986' - 300m)
4440'	(3006' - 900m)

SID	ROUTING
<b>PETUM 3A</b>	Climb on runway heading, at or above 2420' (986') turn RIGHT, 052° track to PETUM, climbing to assigned FL.
<b>PETUM 3B</b>	Climb on runway heading, at 1930' (496') turn LEFT, 075° track to BALOT climbing to assigned FL, then to PETUM.
<b>REMEK 3</b>	Climb on runway heading, at or above 2420' (986') turn RIGHT, 024° track to REMEK, climbing to assigned FL.

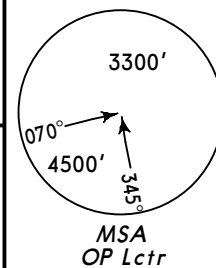
**URMT/STW**  
**SHPAKOVSKOYE**

**JEPPESSEN**  
27 DEC 13 **(10-3B)** **Eff 9 Jan**

**STAVROPOL, RUSSIA**  
**SID**

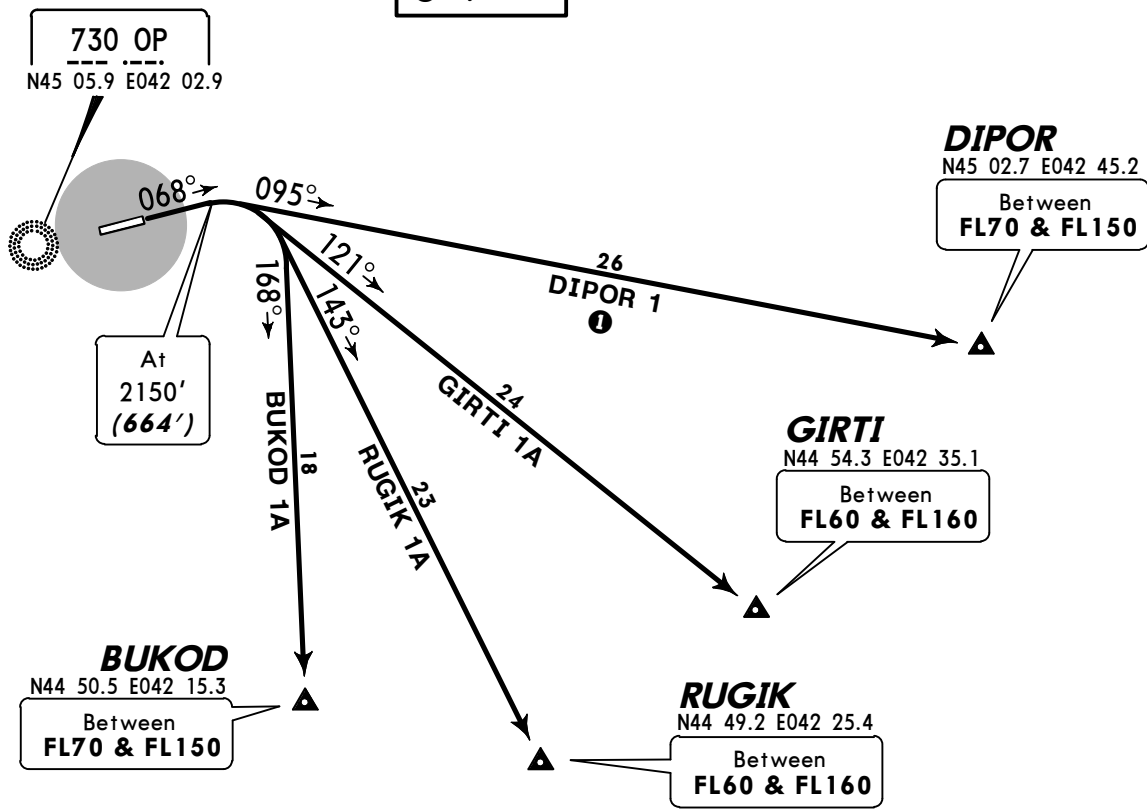
Apt Elev  
**1486'**

QNH on request **(QFE)**  
Trans level: FL60 Trans alt: 4440' **(2954')**  
BUKOD 1A, GIRTI 1A: Take-off to be carried out using noise abatement procedures for the area according to Flight Manual.



**BUKOD 1A [BUKO1A], DIPOR 1**  
**GIRTI 1A [GIRT1A]**  
**RUGIK 1A [RUGI1A]**  
**RWY 07 DEPARTURES**

**1** By ATC



ALT/HEIGHT CONVERSION	
QNH	(QFE)
2150'	(664' - 200m)
4440'	(2954' - 900m)



SID	ROUTING
<b>BUKOD 1A</b>	Climb straight ahead to 2150' (664'), turn RIGHT, 168° track to BUKOD, climbing to assigned FL.
<b>DIPOR 1</b> <b>1</b>	Climb straight ahead to 2150' (664'), turn RIGHT, 095° track to DIPOR, climbing to assigned FL.
<b>GIRTI 1A</b>	Climb straight ahead to 2150' (664'), turn RIGHT, 121° track to GIRTI, climbing to assigned FL.
<b>RUGIK 1A</b>	Climb straight ahead to 2150' (664'), turn RIGHT, 143° track to RUGIK, climbing to assigned FL.

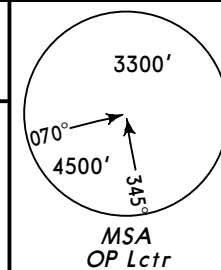
**URMT/STW**  
**SHPAKOVSKOYE**

**JEPPESEN**  
27 DEC 13 **(10-3C)** **Eff 9 Jan**

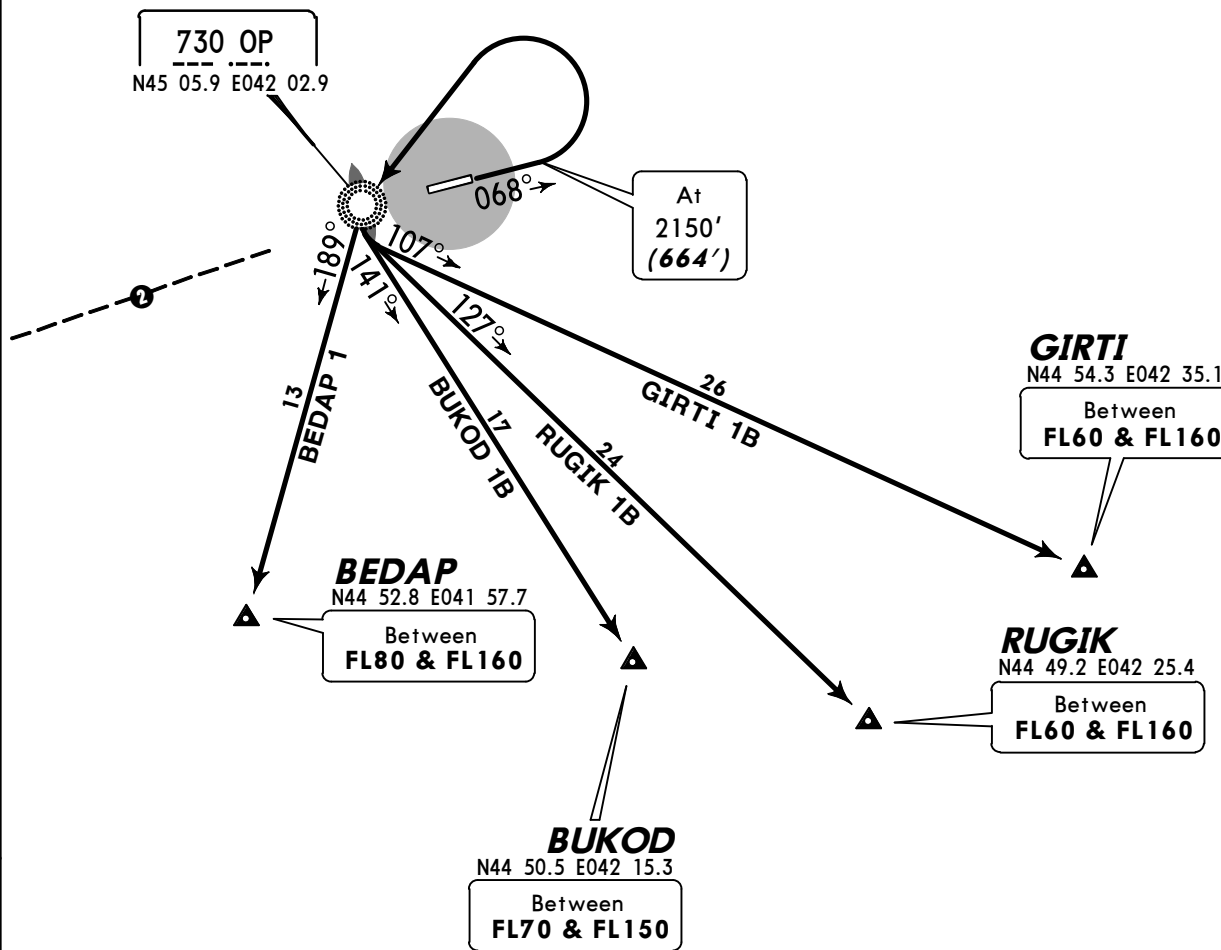
**STAVROPOL, RUSSIA**  
**SID**

*Apt Elev*  
**1486'**

QNH on request **(QFE)**  
Trans level: FL60 Trans alt: 4440' **(2954')**



**BEDAP 1①, BUKOD 1B [BUKO1B]**  
**GIRTI 1B [GIRTI1B]**  
**RUGIK 1B [RUGI1B]**  
**RWY 07 DEPARTURES**  
**BY ATC**



② 243° from ARP between 4.3 NM and 10.8 NM do not fly SOUTH below FL60.



ALT/HEIGHT CONVERSION	
QNH	(QFE)
2150'	(664' - 200m)
4440'	(2954' - 900m)

SID	ROUTING
<b>BEDAP 1</b> ①	Climb straight ahead to 2150' (664'), turn LEFT to OP, 189° bearing to BEDAP, climbing to assigned FL.
<b>BUKOD 1B</b>	Climb straight ahead to 2150' (664'), turn LEFT to OP, 141° track to BUKOD.
<b>GIRTI 1B</b>	Climb straight ahead to 2150' (664'), turn LEFT to OP, 107° track to GIRTI.
<b>RUGIK 1B</b>	Climb straight ahead to 2150' (664'), turn LEFT to OP, 127° track to RUGIK.

① Available if there are no flights at Armavir AD.

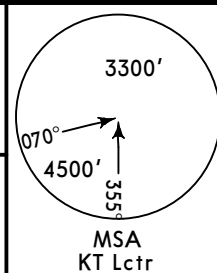
**URMT/STW**  
**SHPAKOVSKOYE**

**JEPPESSEN**  
17 JUL 15 **(10-3D)** **Eff 23 Jul**

**STAVROPOL, RUSSIA**  
**SID**

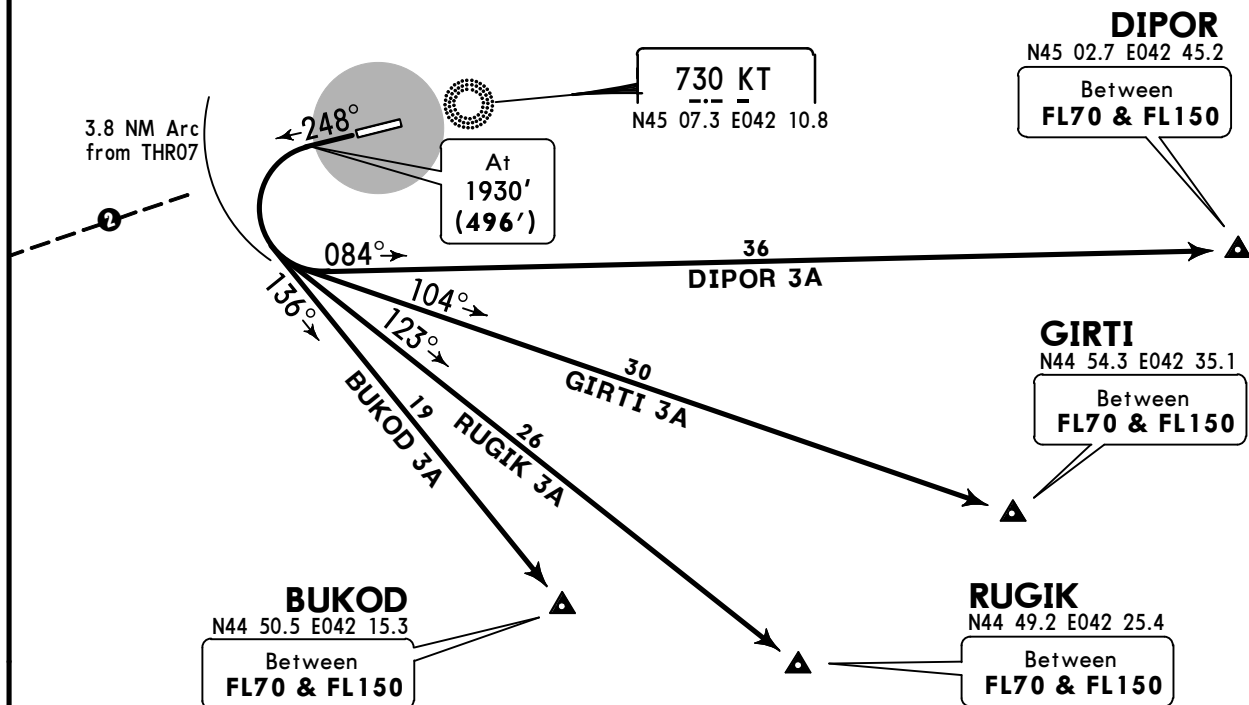
Apt Elev  
**1486'**

QNH on request (QFE)  
Trans level: FL60 Trans alt: 4440' (3006')  
1. Take-off to be carried out using noise abatement procedures for the area according to Flight Manual.  
2. Flights over Stavropol city are prohibited below FL60.



**BUKOD 3A [BUKO3A] ①**  
**DIPOR 3A [DIPO3A]**  
**GIRTI 3A [GIRT3A] ①**  
**RUGIK 3A [RUGI3A] ①**  
**RWY 25 DEPARTURES**

**WARNING**  
LEFT turn must be executed within maximum distance from THR07 of 3.8 NM. If unable to comply, turn RIGHT.



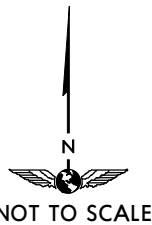
② 243° from ARP between 4.9 NM and 11.3 NM do not fly SOUTH below FL60.

**BUKOD**  
N44 50.5 E042 15.3  
Between FL70 & FL150

**DIPOR**  
N45 02.7 E042 45.2  
Between FL70 & FL150

**GIRTI**  
N44 54.3 E042 35.1  
Between FL70 & FL150

**RUGIK**  
N44 49.2 E042 25.4  
Between FL70 & FL150



**BUKOD 3A**  
This SID requires a minimum climb gradient of 4.4%.

Gnd speed-KT	75	100	150	200	250	300
4.4% V/V (fpm)	334	446	668	891	1114	1337

**ALT/HEIGHT CONVERSION**

QNH	(QFE)
1930'	(496' - 150m)
4440'	(3006' - 900m)

SID	ROUTING
<b>BUKOD 3A ①</b>	Climb straight ahead to 1930' (496'), turn LEFT, 136° track to BUKOD.
<b>DIPOR 3A</b>	Climb straight ahead to 1930' (496'), turn LEFT, 084° track to DIPOR, climbing to assigned FL.
<b>GIRTI 3A ①</b>	Climb straight ahead to 1930' (496'), turn LEFT, 104° track to GIRTI.
<b>RUGIK 3A ①</b>	Climb straight ahead to 1930' (496'), turn LEFT, 123° track to RUGIK climbing to assigned FL.

① Under mandatory RADAR control.

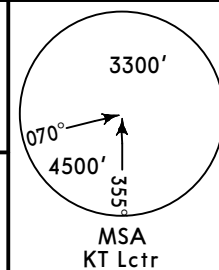
**URMT/STW**  
**SHPAKOVSKOYE**

**JEPPESSEN**  
17 JUL 15 **(10-3E)** **Eff 23 Jul**

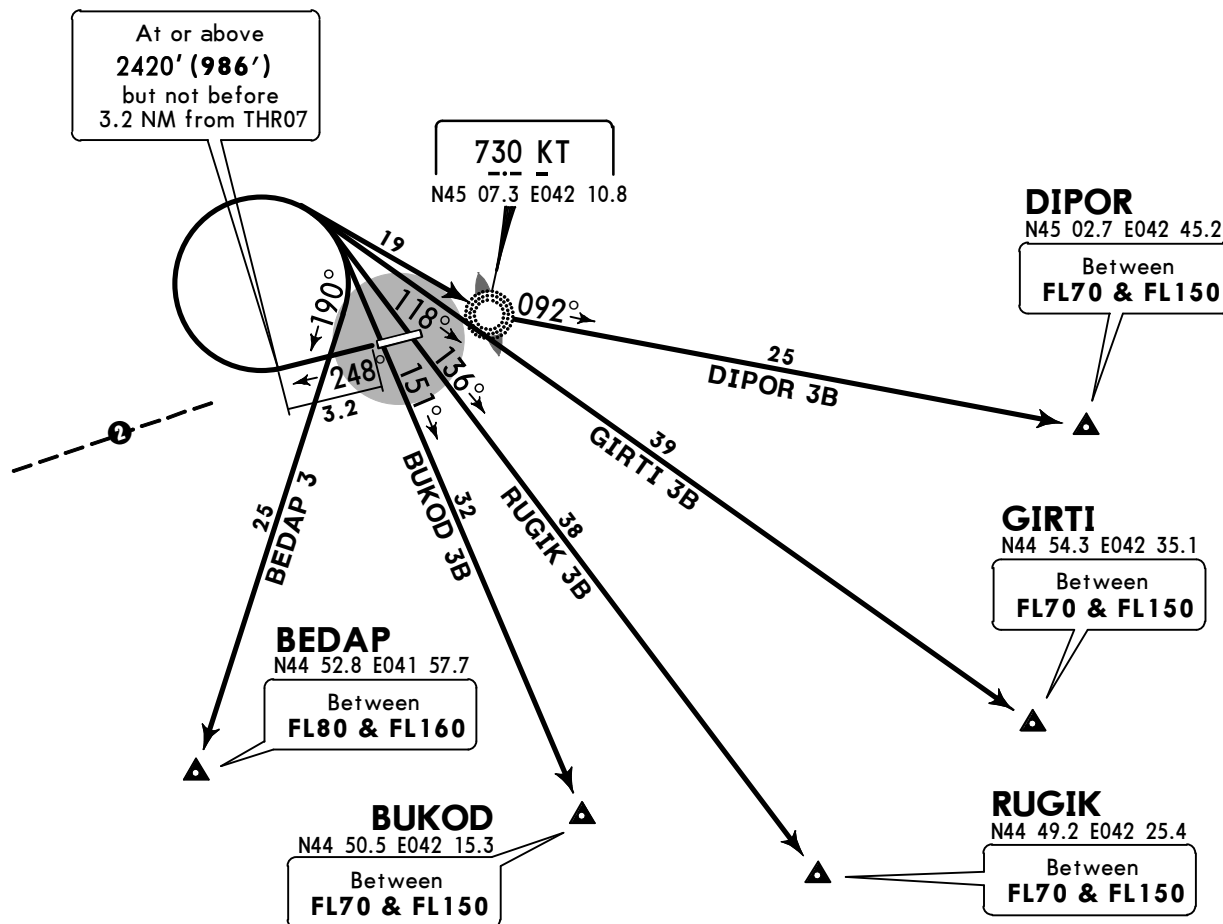
**STAVROPOL, RUSSIA**  
**SID**

Apt Elev  
**1486'**

QNH on request **(QFE)**  
Trans level: FL60 Trans alt: 4440' **(3006')**  
1. Take-off to be carried out using noise abatement procedures for the area according to Flight Manual.  
2. Flights over Stavropol city are prohibited below FL60.



**BEDAP 3①, BUKOD 3B [BUKO3B]**  
**DIPOR 3B [DIPO3B], GIRTI 3B [GIRT3B]**  
**RUGIK 3B [RUGI3B]**  
**RWY 25 DEPARTURES**  
**BY ATC**



ALT/HEIGHT CONVERSION	
QNH	(QFE)
2420'	(986' - 300m)
4440'	(3006' - 900m)

② 243° from ARP between 4.9 NM and 11.3 NM do not fly SOUTH below FL60.



SID	ROUTING
<b>BEDAP 3</b> <b>①</b>	Climb straight ahead, at or above 2420' (986') turn RIGHT, 190° track to BEDAP, climbing to assigned FL.
<b>BUKOD 3B</b>	Climb straight ahead, at or above 2420' (986') turn RIGHT, 151° track to BUKOD.
<b>DIPOR 3B</b>	Climb straight ahead, at or above 2420' (986') turn RIGHT to KT, 092° bearing to DIPOR, climbing to assigned FL.
<b>GIRTI 3B</b>	Climb straight ahead, at or above 2420' (986') turn RIGHT, 118° track to GIRTI, climbing to assigned FL.
<b>RUGIK 3B</b>	Climb straight ahead, at or above 2420' (986') turn RIGHT, 136° track to RUGIK.

① Available if there are no flights at Armavir AD.

**URMT/STW**  
**SHPAKOVSKOYE**

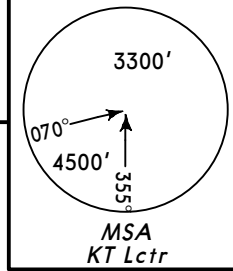
**JEPPESEN**  
27 DEC 13 **10-3F** **Eff 9 Jan**

**STAVROPOL, RUSSIA**

**SID**

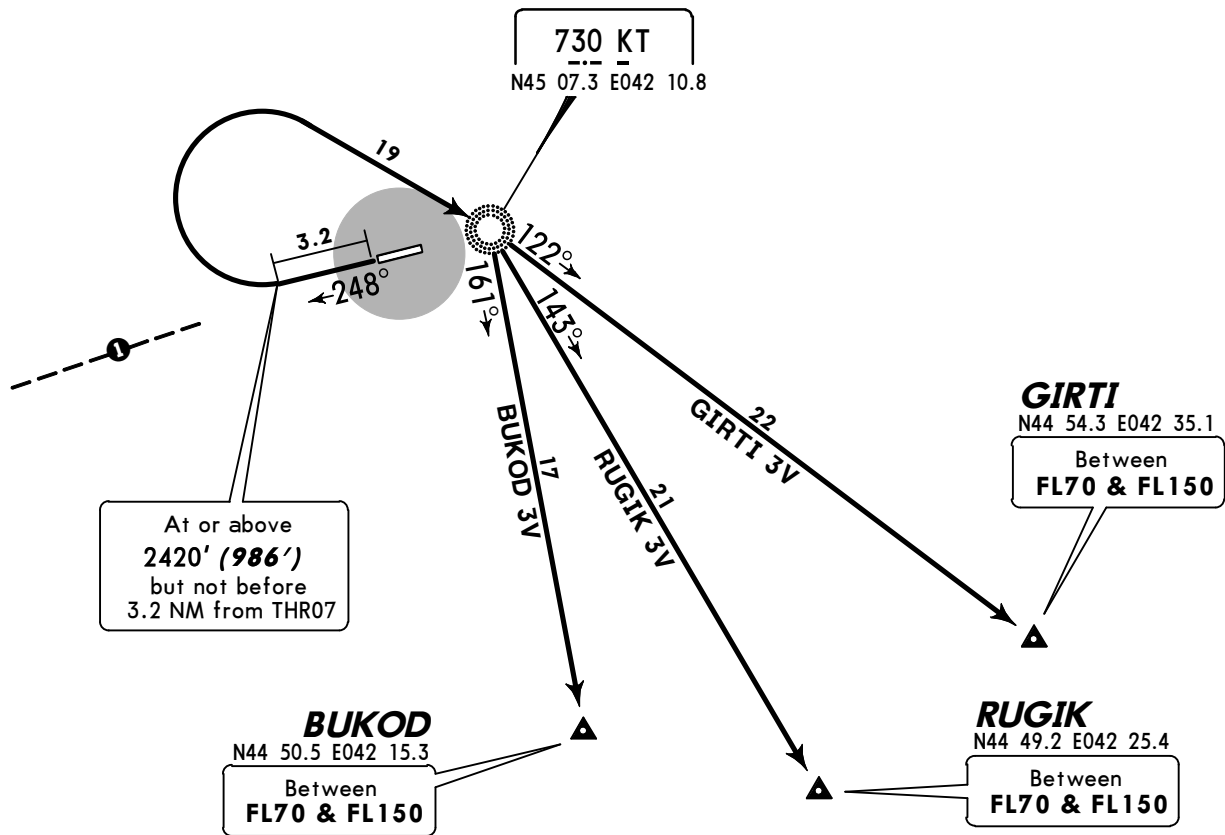
Apt Elev  
**1486'**

QNH on request **(QFE)**  
Trans level: FL60 Trans alt: 4440' **(3006')**  
Take-off to be carried out using noise abatement procedures for the area according to Flight Manual.



**BUKOD 3V [BUKO3V]**  
**GIRTI 3V [GIRT3V]**  
**RUGIK 3V [RUGI3V]**  
**RWY 25 DEPARTURES**  
**BY ATC**

① 243° from ARP between 4.3 NM and 10.8 NM do not fly SOUTH below FL60.



ALT/HEIGHT CONVERSION	
QNH	(QFE)
2420'	(986' - 300m)
4440'	(3006' - 900m)



SID	ROUTING
<b>BUKOD 3V</b>	Climb straight ahead, at or above 2420' (986') turn RIGHT to KT, 161° bearing to BUKOD.
<b>GIRTI 3V</b>	Climb straight ahead, at or above 2420' (986') turn RIGHT to KT, 122° bearing to GIRTI.
<b>RUGIK 3V</b>	Climb straight ahead, at or above 2420' (986') turn RIGHT to KT, 143° bearing to RUGIK.

**URMT/STW**  
**SHPAKOVSKOYE**

**JEPPESEN**  
27 DEC 13 **(10-3G)** **Eff 9 Jan**

**STAVROPOL, RUSSIA**  
**SID**

Apt Elev <b>1486'</b>	QNH on request <b>(QFE)</b> Trans level: FL60    Trans alt: 4440' <b>(2954')</b>	<p>3300' 070° 4500' 345° MSA OP Lctr</p>
--------------------------	---	--

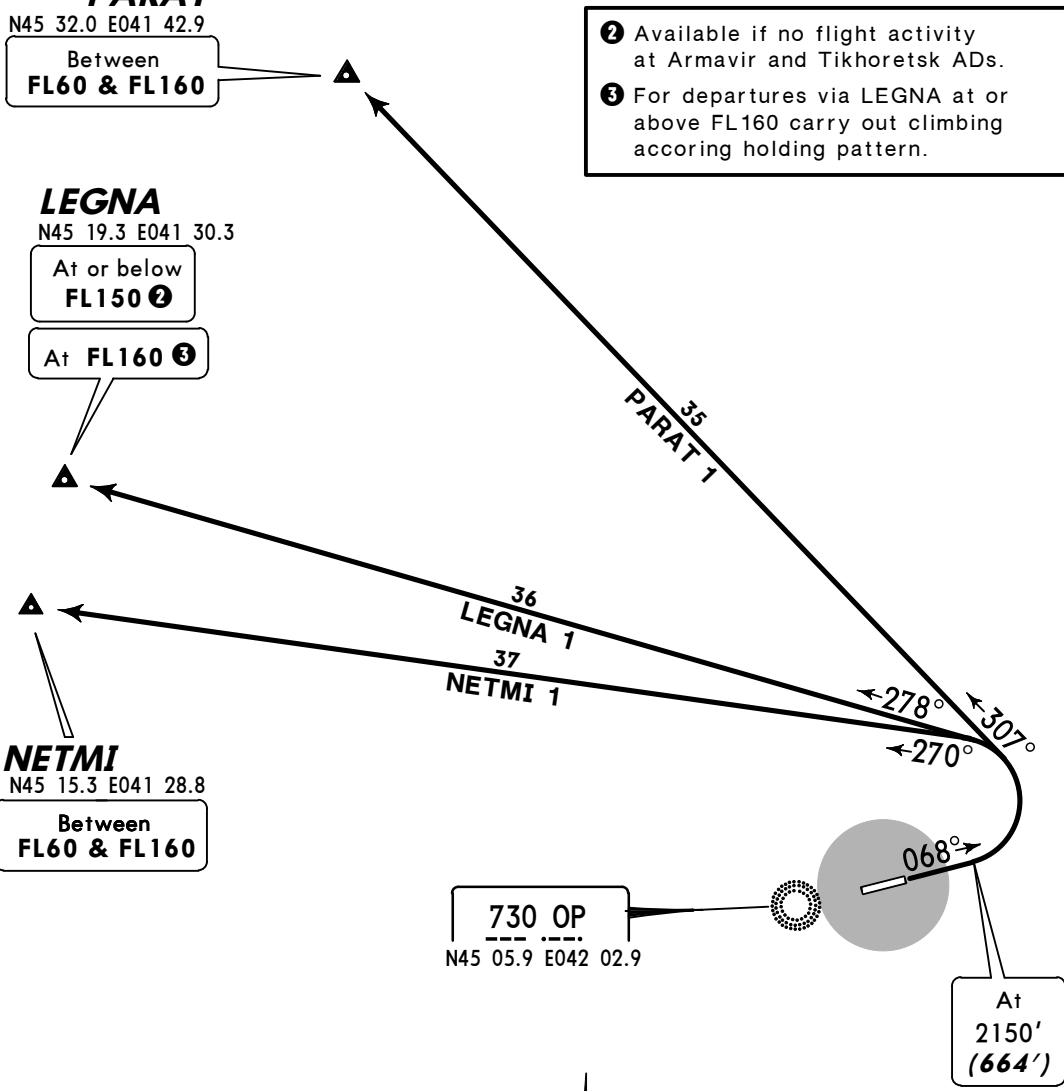
**LEGNA 1**  
**NETMI 1**  
**PARAT 1**  
**RWY 07 DEPARTURES**

**PARAT**  
N45 32.0 E041 42.9  
Between  
**FL60 & FL160**

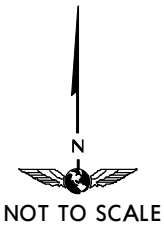
**LEGNA**  
N45 19.3 E041 30.3  
At or below  
**FL150** ②  
At **FL160** ③

**NETMI**  
N45 15.3 E041 28.8  
Between  
**FL60 & FL160**

② Available if no flight activity at Armavir and Tikhoretsk ADs.  
③ For departures via LEGNA at or above FL160 carry out climbing accoring holding pattern.



ALT/HEIGHT CONVERSION	
QNH	(QFE)
2150'	(664' - 200m)
4440'	(2954' - 900m)



SID	ROUTING
<b>LEGNA 1</b>	Climb straight ahead to 2150' (664'), turn LEFT, 278° track to LEGNA, climbing to assigned FL.
<b>NETMI 1</b> ①	Climb straight ahead to 2150' (664'), turn LEFT, 270° track to NETMI, climbing to assigned FL.
<b>PARAT 1</b>	Climb straight ahead to 2150' (664'), turn LEFT, 307° track to PARAT, climbing to assigned FL.

① Available if there are no flights at Armavir AD.



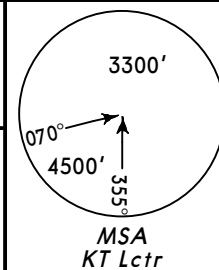
**URMT/STW**  
**SHPAKOVSKOYE**

**JEPPESEN**  
27 DEC 13 **(10-3H)** **Eff 9 Jan**

**STAVROPOL, RUSSIA**  
**SID**

Apt Elev  
**1486'**

QNH on request **(QFE)**  
Trans level: FL60 Trans alt: 4440' **(3006')**  
Take-off to be carried out using noise abatement procedures for the area according to Flight Manual.



**LEGNA 3**  
**NETMI 3**  
**PARAT 3**  
**RWY 25 DEPARTURES**

**PARAT**  
N45 32.0 E041 42.9  
Between  
**FL60 & FL160**

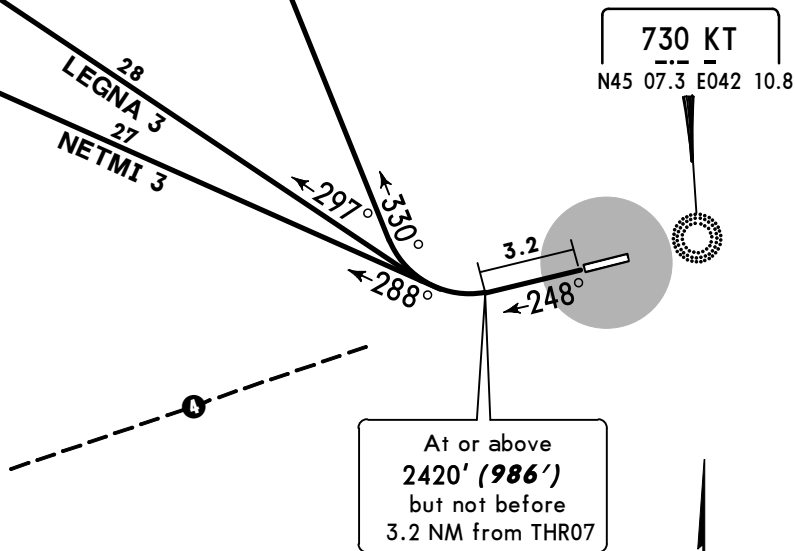
**LEGNA**  
N45 19.3 E041 30.3  
At **FL160** ③  
At or below  
**FL150** ②

**NETMI**  
N45 15.3 E041 28.8  
Between  
**FL60 & FL160**

- ② Available if no flight activity at Armavir and Tikhoretsk ADs.
- ③ For departure via LEGNA at or above FL160 carry out climbing according to holding pattern.

ALT/HEIGHT CONVERSION	
QNH	(QFE)
2420'	(986' - 300m)
4440'	(3006' - 900m)

④ 243° from ARP between 4.3 NM and 10.8 NM do not fly SOUTH below FL60.



At or above  
**2420' (986')**  
but not before  
3.2 NM from THR07



SID	ROUTING
<b>LEGNA 3</b>	Climb straight ahead, at or above 2420' (986') turn RIGHT, 297° track to LEGNA, climbing to assigned FL.
<b>NETMI 3</b> ①	Climb straight ahead, at or above 2420' (986') turn RIGHT, 288° track to NETMI, climbing to assigned FL.
<b>PARAT 3</b>	Climb straight ahead, at or above 2420' (986') turn RIGHT, 330° track to PARAT, climbing to assigned FL.

① Available if there are no flights at Armavir AD.

URMT/STW  
SHPAKOVSKOYE

JEPPESEN

11 JAN 13

10-4

STAVROPOL, RUSSIA  
NOISE**NOISE ABATEMENT****DEPARTURES****GENERAL**

Noise abatement procedures shall not be carried out at the expense of reduction of flight safety and in case of engine failure during take-off.

**TAKE-OFF AND CLIMBING PHASE**

All ACFT shall carry out take-off according to the following parameters:

- |                                |   |
|--------------------------------|---|
| Take-off to 2800' (1314')      | - retract landing gear retraction;  |
|                                | - climb with constant speed of $V_2 + 10KT$ ;                                       |
|                                | - wing devices in take-off position;  |
| 2800' (1314') to 2970' (1484') | - throttle back engines to minimum safe power, which provides climbing of 3-4m/sec; |
| At or above 4770' (3284')      | - change to normal flight profile;  |
|                                | - terminate noise restrictions.   |

**RESTRICTIONS**

ACFT take-off with tail-wind subject to friction coefficient is allowed when specified that direction is optimal for noise abatement over the city, or when take-off into wind does not provide safety, or when take-off in specified direction is prohibited. In this case tail-wind component shall comply with that established by the Aeroplane Flight Manual for specified ACFT type .



URMT/STW

**JEPPESEN**

**Standard**

8 JUN 18

**10-9S**

**Eff 21 Jun**

**STAVROPOL, RUSSIA**  
SHPAKOVSKOYE

STRAIGHT-IN RWY		A	B	C	D
07	ILS	<b>1686'</b> (200')	<b>1686'</b> (200')	<b>1686'</b> (200')	<b>1686'</b> (200')
	FULL	<b>R550m</b>	<b>R550m</b>	<b>R550m</b>	<b>R550m</b>
	TDZ or CL out	① R550m	① R550m	① R550m	① R550m
	ALS out	R1200m	R1200m	R1200m	R1200m
	LOC	NOT AUTH	NOT AUTH	NOT AUTH	NOT AUTH
	②③ 2 NDB or OP NDB	<b>1860'</b> (374')	<b>1860'</b> (374')	<b>1860'</b> (374')	<b>1860'</b> (374')
	ALS out	R1500m	R1500m	R1700m	R1700m
④ 2 NDB	<b>2730'</b> (1244')	<b>2730'</b> (1244')	<b>2730'</b> (1244')	<b>2730'</b> (1244')	
	<b>R5000m</b>	<b>R5000m</b>	<b>R5000m</b>	<b>R5000m</b>	
②③ O NDB	<b>1990'</b> (504')	<b>1990'</b> (504')	<b>1990'</b> (504')	<b>1990'</b> (504')	
	<b>R1500m</b>	<b>R1500m</b>	<b>R1600m</b>	<b>R1600m</b>	
ALS out	R1500m	R1500m	R2400m	R2400m	
④ O or OP NDB	<b>2760'</b> (1274')	<b>2760'</b> (1274')	<b>2760'</b> (1274')	<b>2760'</b> (1274')	
	<b>R5000m</b>	<b>R5000m</b>	<b>R5000m</b>	<b>R5000m</b>	
25	ILS	<b>1634'</b> (200')	<b>1634'</b> (200')	<b>1634'</b> (200')	<b>1634'</b> (200')
	FULL	<b>R550m</b>	<b>R550m</b>	<b>R550m</b>	<b>R550m</b>
	TDZ or CL out	① R550m	① R550m	① R550m	① R550m
	ALS out	R1200m	R1200m	R1200m	R1200m
	LOC	NOT AUTH	NOT AUTH	NOT AUTH	NOT AUTH
	② 2 NDB or KT NDB	<b>1740'</b> (306')	<b>1740'</b> (306')	<b>1740'</b> (306')	<b>1740'</b> (306')
	ALS out	R1400m	R1400m	R1400m	R1400m
② K NDB	<b>1990'</b> (556')	<b>1990'</b> (556')	<b>1990'</b> (556')	<b>1990'</b> (556')	
	<b>R1500m</b>	<b>R1500m</b>	<b>R1800m</b>	<b>R1800m</b>	
ALS out	R1500m	R1500m	R2400m	R2400m	

- ① W/o HUD/AP/FD: RVR 750m.
- ② Continuous Descent Final Approach.
- ③ With FAF.
- ④ W/o FAF.

**Standard**

TAKE-OFF

	Low Visibility Take-off		
	Day: RL & RCLM Night: RL	Day: RL or RCLM Night: RL	Adequate vis ref (Day only)
A			
B			
C	RVR 300m	400m	500m
D			

**URMT/STW**  
**SHPAKOVSKOYE**

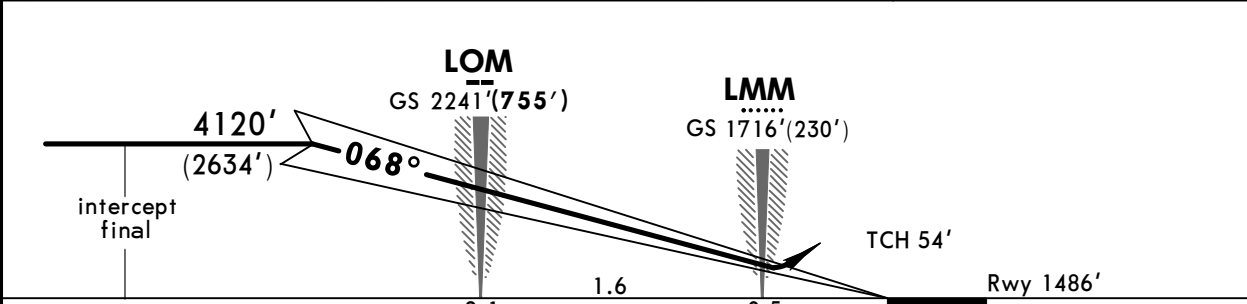
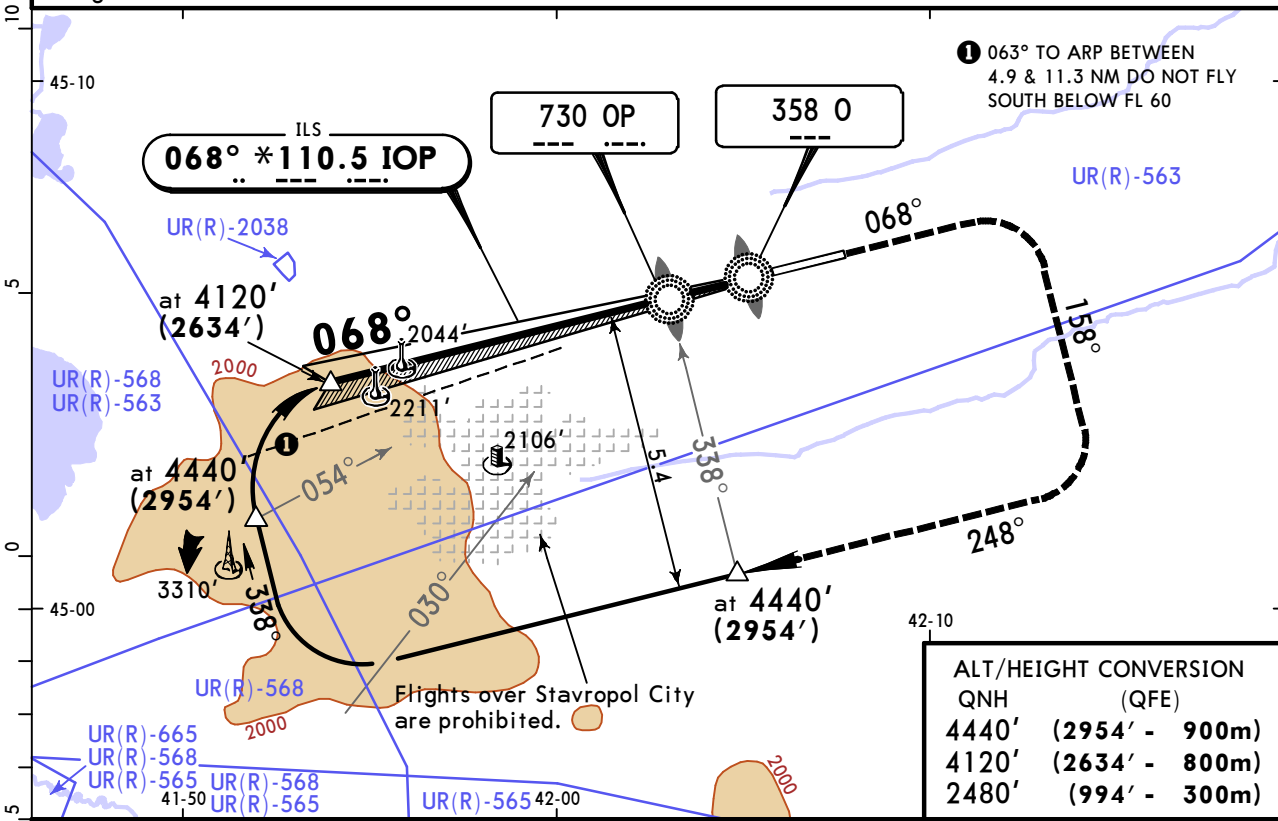


**STAVROPOL, RUSSIA**  
**ILS Y Rwy 07**

ATIS <b>134.2</b> (Russian <b>128.82</b> )		STAVROPOL Approach (APP/SRE) <b>120.3 124.0</b>		STAVROPOL Tower <b>120.9 124.0</b>		Ground <b>120.9 124.0</b>	
LOC IOP <b>*110.5</b>	Final Apch Crs <b>068°</b>	GS LOM <b>2241'(755')</b>	ILS DA(H) <b>1686'(200')</b>	Apt Elev 1486' Rwy 1486'			

**MISSED APCH:** Climb on 068° to 2480' (994'), then turn RIGHT onto 158°, then turn RIGHT onto 248° climbing to 4440' (2954'), then according to chart.

Alt Set: MM (hPa on req) QNH on req (QFE) Trans level: FL 60 Trans alt: 4440' (2954')  
 1. Turbulence with downdrafts and windshear may be expected on final in the vicinity of base turn.  
 2. Ground proximity warning system may be brought into operation between LOM and LMM due to abrupt change of relief.



Gnd speed-Kts	70	90	100	120	140	160		2480' (994') on 068°
GS	3.17°	393	505	561	673	785		

STRAIGHT-IN LANDING RWY 07		LOC (GS out)	
ILS DA(H) 1686'(200')			
FULL	ALS out		
A			
B			
C	RVR 720m VIS 800m	1200m	NOT AUTHORIZED
D			

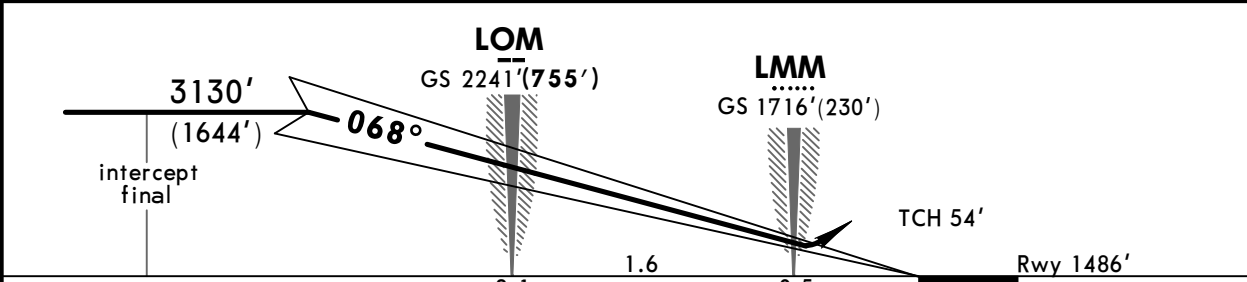
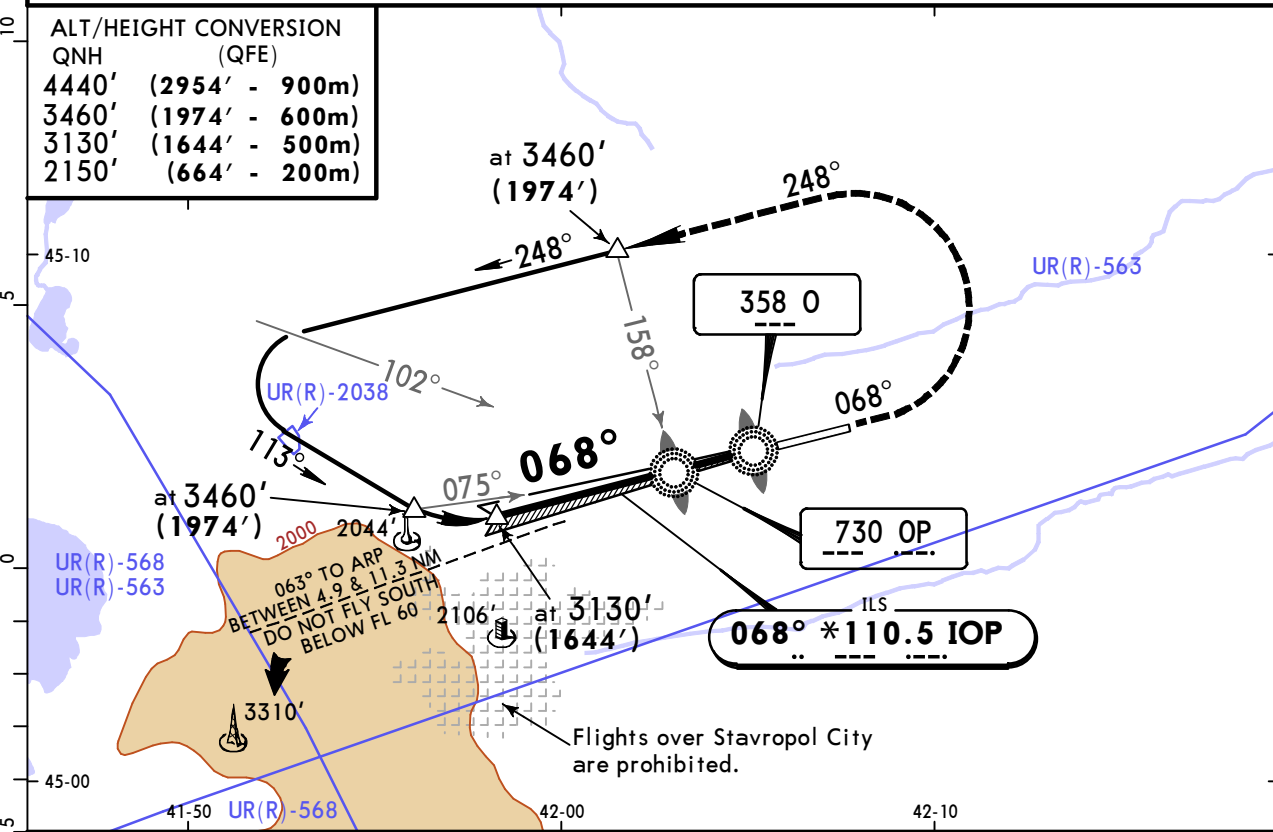
PANS OPS

**URMT/STW**  
**SHPAKOVSKOYE**

**JEPPESSEN**  
1 DEC 17 **(11-2)**

**STAVROPOL, RUSSIA**  
**ILS X Rwy 07**

ATIS		STAVROPOL Approach (APP/SRE)		STAVROPOL Tower		Ground	
134.2 (Russian 128.82)		120.3	124.0	120.9	124.0	120.9	124.0
LOC IOP	Final Apch Crs	GS LOM	ILS DA(H)	Apt Elev 1486'			
*110.5	068°	2241' (755')	1686' (200')	Rwy 1486'			
<b>MISSED APCH:</b> Climb on 068° to 2150' (664'), then turn LEFT onto 248° climbing to 3460' (1974'), then according to chart.							MSA OP NDB
Alt Set: MM (hPa on req)		QNH on req (QFE)		Trans level: FL 60		Trans alt: 4440' (2954')	
1. Turbulence with downdrafts and windshear may be expected on final in the vicinity of base turn. 2. Ground proximity warning system may be brought into operation between LOM and LMM due to abrupt change of relief.							



Gnd speed-Kts	70	90	100	120	140	160	HIALS	2150' (664')	068°	248°	3460' (1974')
GS	3.17°	393	505	561	673	785	897	PAPI	↑	← LT	↑

STRAIGHT-IN LANDING RWY 07			
ILS DA(H) 1686' (200')		LOC (GS out)	
FULL	ALS out		
A			
B			
C	RVR 720m VIS 800m	1200m	NOT AUTHORIZED
D			

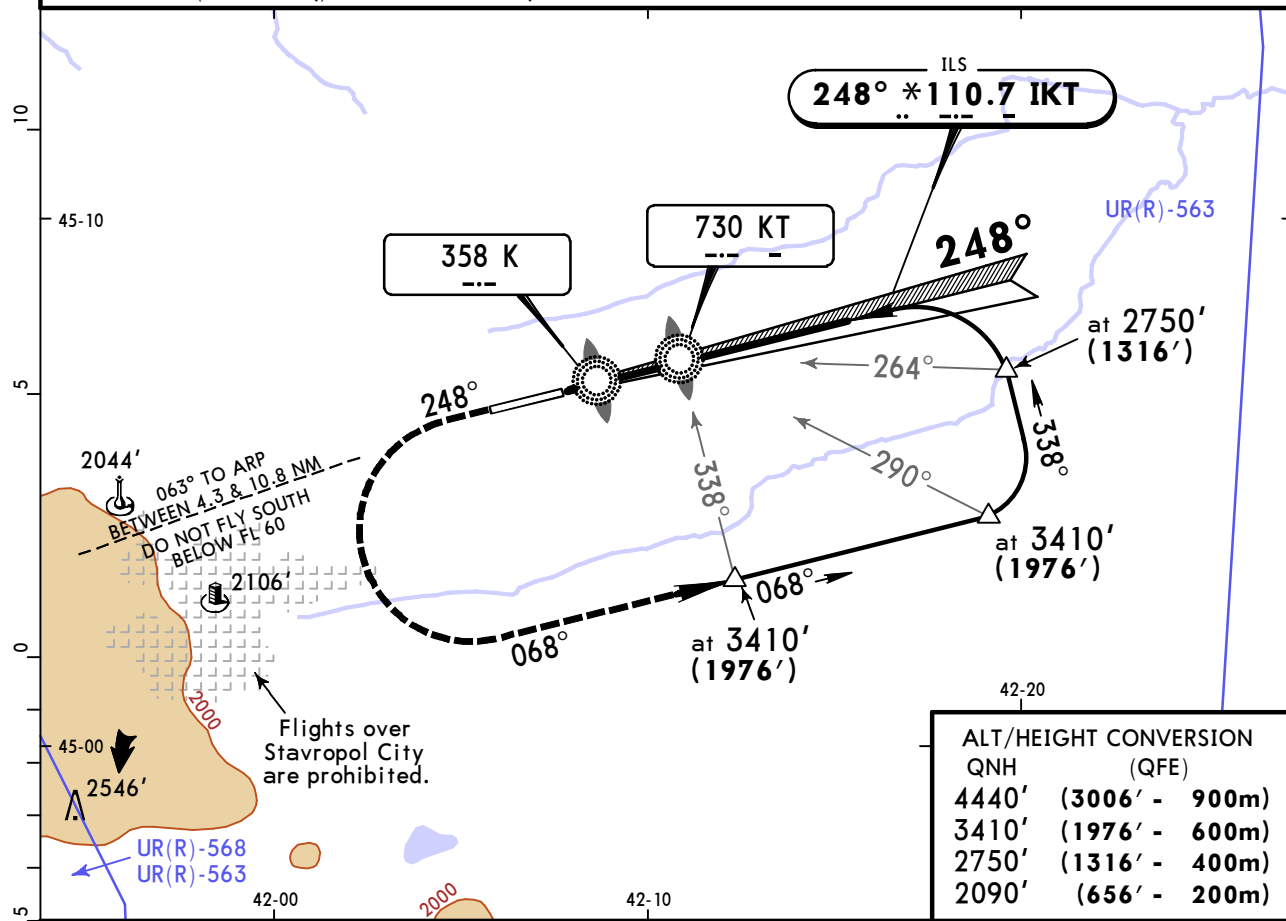
PANS OPS

**URMT/STW**  
**SHPAKOVSKOYE**

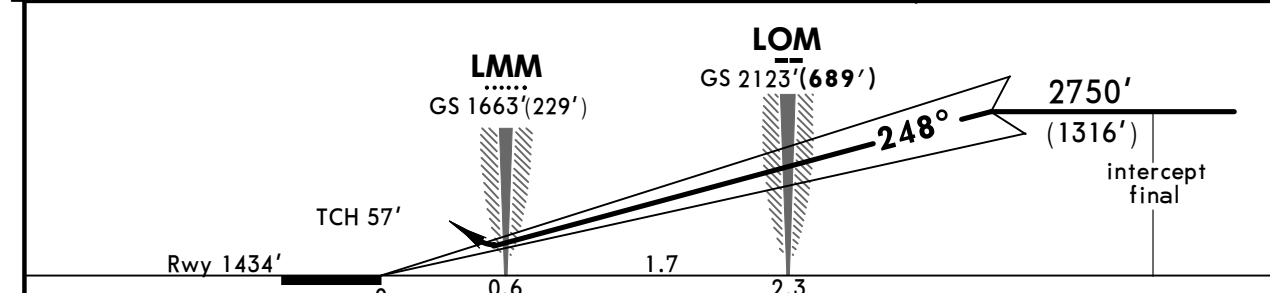
**JEPPESEN**  
1 DEC 17 **(11-3)**

**STAVROPOL, RUSSIA**  
**ILS Y Rwy 25**

ATIS <b>134.2</b> (Russian <b>128.82</b> )		STAVROPOL Approach (APP/SRE) <b>120.3 124.0</b>		STAVROPOL Tower <b>120.9 124.0</b>		Ground <b>120.9 124.0</b>	
LOC IKT <b>*110.7</b>	Final Apch Crs <b>248°</b>	GS LOM <b>2123'(689')</b>	ILS DA(H) <b>1634'(200')</b>	Apt Elev 1486' Rwy 1434'			
<b>MISSED APCH: Climb on 248° to 2090'(656'), then turn LEFT onto 068° climbing to 3410'(1976'), then according to chart.</b>						MSA KT NDB	
Alt Set: MM (hPa on req)		QNH on req (QFE)		Trans level: FL 60		Trans alt: 4440' (3006')	



QNH	(QFE)
4440'	(3006' - 900m)
3410'	(1976' - 600m)
2750'	(1316' - 400m)
2090'	(656' - 200m)



Gnd speed-Kts	70	90	100	120	140	160	HI ALS PAPI	2090' (656')	on 248°	068° LT	3410' (1976')
GS	2.67°	331	425	472	567	661		756			↑

STRAIGHT-IN LANDING RWY 25		LOC (GS out)	
ILS DA(H) 1634'(200')			
FULL	ALS out		
A			
B			
C	RVR 720m VIS 800m	1200m	NOT AUTHORIZED
D			

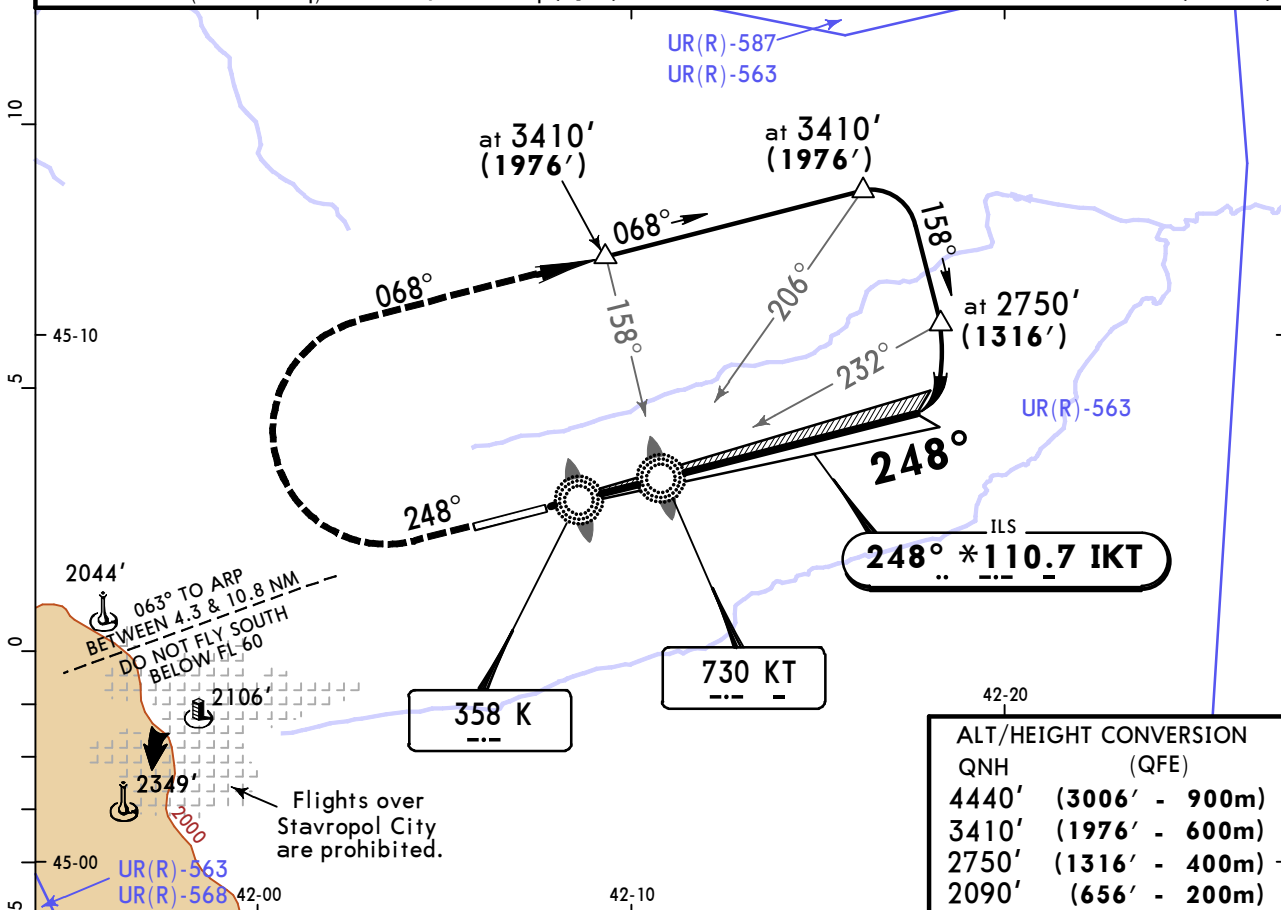
PANS OPS

**URMT/STW**  
**SHPAKOVSKOYE**

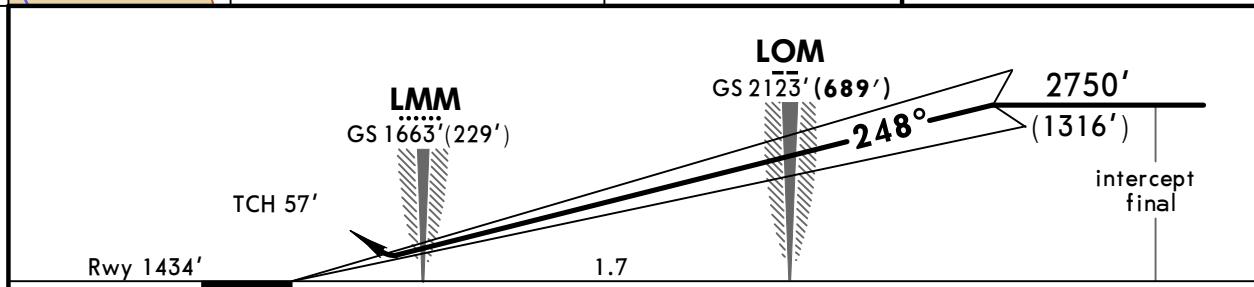
**JEPPESEN**  
1 DEC 17 **(11-4)**

**STAVROPOL, RUSSIA**  
**ILS X Rwy 25**

ATIS <b>134.2</b> (Russian) <b>128.82</b>		STAVROPOL Approach (APP/SRE) <b>120.3 124.0</b>		STAVROPOL Tower <b>120.9 124.0</b>		Ground <b>120.9 124.0</b>	
LOC IKT <b>*110.7</b>	Final Apch Crs <b>248°</b>	GS LOM <b>2123'(689')</b>	ILS DA(H) <b>1634'(200')</b>	Apt Elev 1486' Rwy 1434'			
<b>MISSED APCH: Climb on 248° to 2090' (656'), then turn RIGHT onto 068° climbing to 3410' (1976'), then according to chart.</b>							MSA KT NDB
Alt Set: MM (hPa on req)		QNH on req (QFE)		Trans level: FL 60		Trans alt: 4440' (3006')	



ALT/HEIGHT CONVERSION	
QNH	(QFE)
4440'	(3006' - 900m)
3410'	(1976' - 600m)
2750'	(1316' - 400m)
2090'	(656' - 200m)



Gnd speed-Kts	70	90	100	120	140	160	HIALS	2090' (656')	on 248°	068°	3410' (1976')
GS	2.67°	331	425	472	567	661	756	PAPI		RT	

STRAIGHT-IN LANDING RWY 25		
ILS DA(H) <b>1634'(200')</b>		LOC (GS out)
FULL	ALS out	
A		
B		
C	RVR 720m VIS 800m	1200m
D		NOT AUTHORIZED

PANS OPS



**URMT/STW**  
**SHPAKOVSKOYE**



**STAVROPOL, RUSSIA**

8 JUN 18 (16-1) Eff 21 Jun 2 NDB or NDB Rwy 07

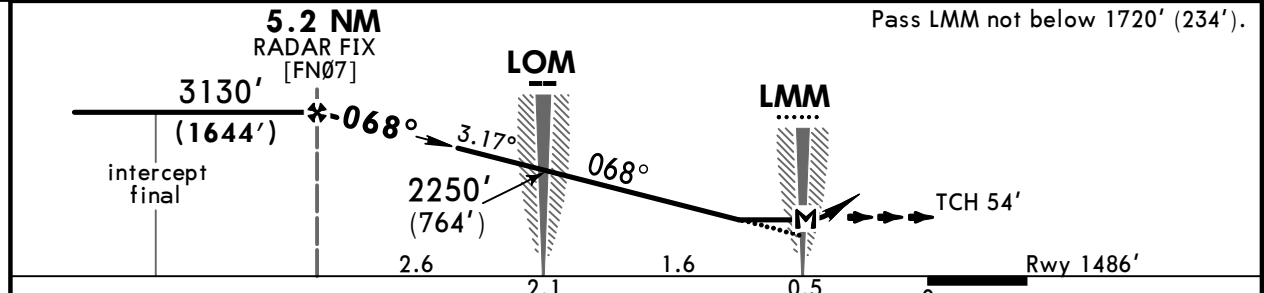
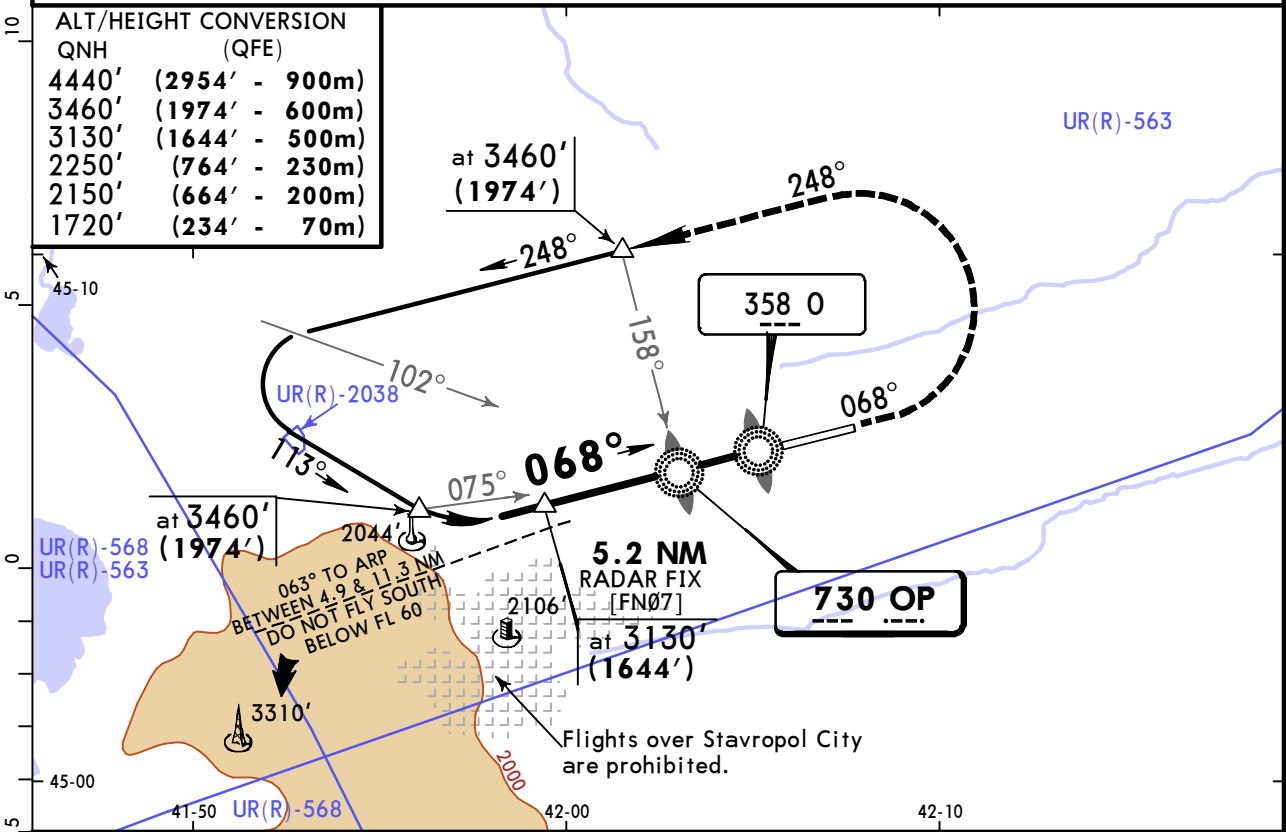
ATIS		STAVROPOL Approach (APP/SRE)		STAVROPOL Tower		Ground	
134.2 (Russian 128.82)		120.3	124.0	120.9	124.0	120.9	124.0
NDB OP <b>730</b>	Final Apch Crs <b>068°</b>	Minimum Alt <b>5.2 NM</b> RADAR FIX <b>3130' (1644')</b>	MDA(H) Refer to Minimums	Apt Elev 1486' Rwy 1486'			
<b>MISSED APCH:</b> Climb on 068° to 2150' (664'), then turn LEFT onto 248° climbing to 3460' (1974'), then according to chart.							MSA OP NDB

Alt Set: MM (hPa on req) QNH on req (QFE) Trans level: FL 60 Trans alt: 4440' (2954')

1. Turbulence with downdrafts and windshear may be expected on final in the vicinity of base turn.  
2. Ground proximity warning system may be brought into operation between LOM and LMM due to abrupt change of relief.

**ALT/HEIGHT CONVERSION**  
QNH (QFE)

4440'	(2954' - 900m)
3460'	(1974' - 600m)
3130'	(1644' - 500m)
2250'	(764' - 230m)
2150'	(664' - 200m)
1720'	(234' - 70m)



Gnd speed-Kts	70	90	100	120	140	160	HIALS	2150' (664') on 068°	248°	3460' (1974')
Descent Angle	3.17°	393	505	561	673	785	897	PAPI	LT	
MAP at LMM										

2 NDB/OP NDB with FAF		2 NDB w/o FAF		0 NDB with FAF		0 NDB/OP NDB w/o FAF	
MDA(H) 1860'(374')		MDA(H) 2730'(1244')		MDA(H) 1990'(504')		MDA(H) 2760'(1274')	
A	ALS out	1200m	RVR 1800m VIS 2000m	1200m	RVR 1500m VIS 1600m	1200m	RVR 1800m VIS 2000m
B	1200m RVR 1500m VIS 1600m	RVR 1500m VIS 1600m	2400m	RVR 1500m VIS 1600m	2400m	RVR 1500m VIS 1600m	2400m
C		4000m	4800m	RVR 1500m VIS 1600m	2400m	4000m	4800m
D	RVR 1500m VIS 1600m	RVR 1800m VIS 2000m	4400m	RVR 1800m VIS 2000m		4400m	4800m

PANS OPS

# URMT/STW SHPAKOVSKOYE

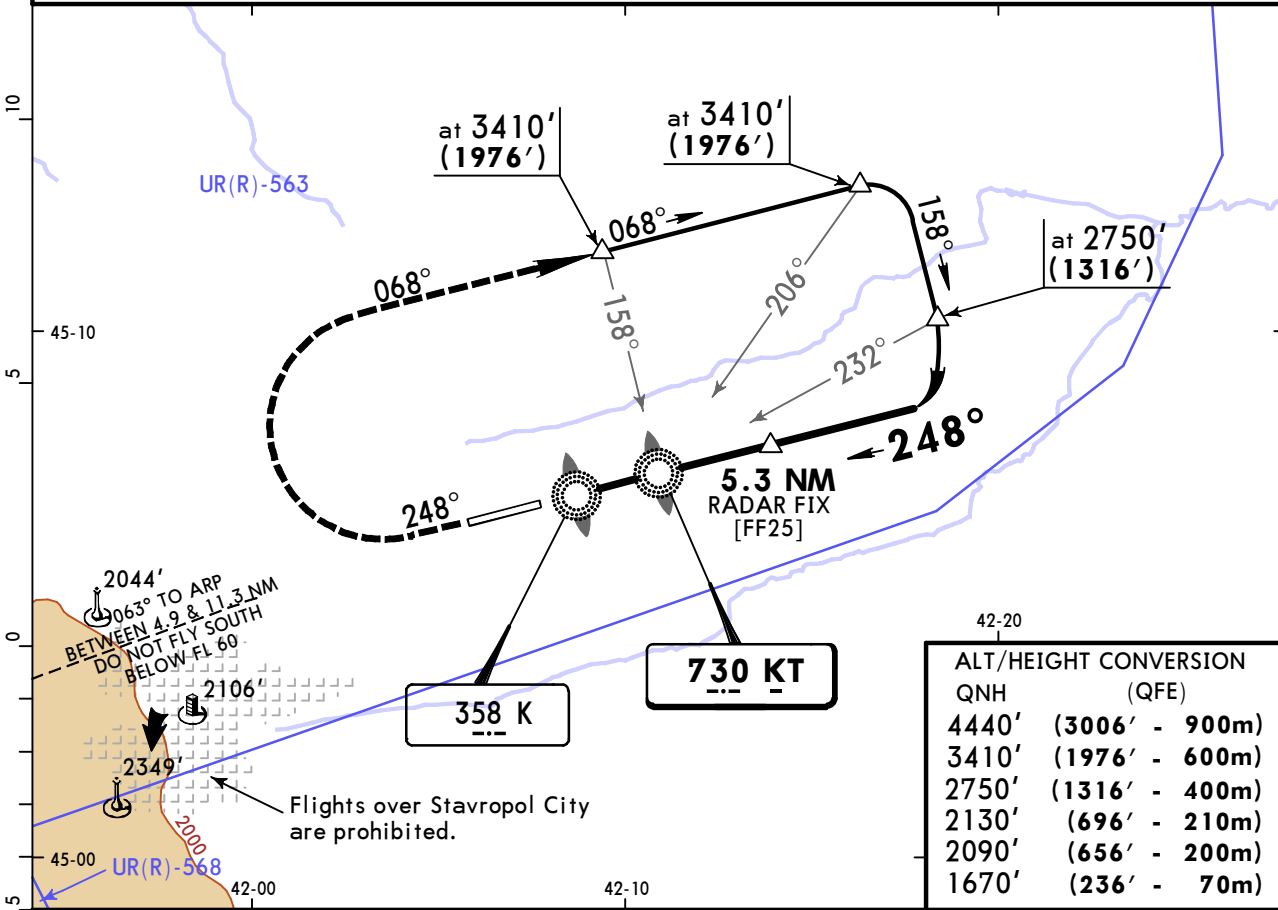


# STAVROPOL, RUSSIA

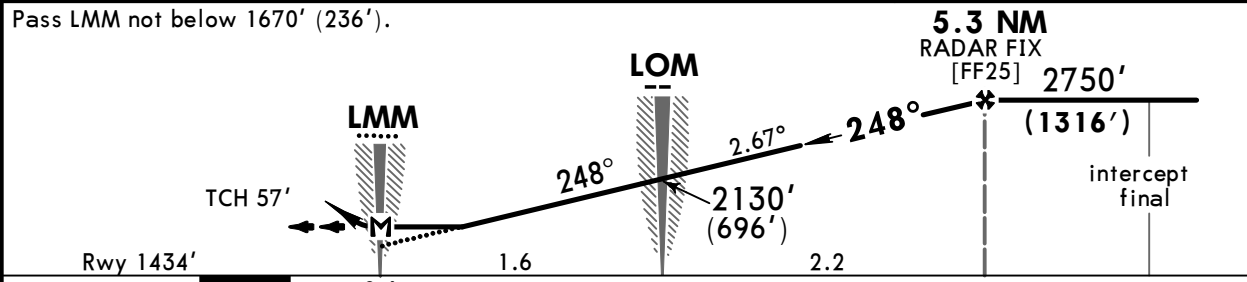
8 JUN 18 (16-2) Eff 21 Jun 2 NDB or NDB Rwy 25

ATIS <b>134.2</b> (Russian <b>128.82</b> )		STAVROPOL Approach (APP/SRE) <b>120.3 124.0</b>		STAVROPOL Tower <b>120.9 124.0</b>		Ground <b>120.9 124.0</b>	
NDB KT <b>730</b>	Final Apch Crs <b>248°</b>	Minimum Alt <b>5.3 NM RADAR FIX 2750'(1316')</b>	MDA(H) Refer to Minimums	Apt Elev 1486' Rwy 1434'			
<b>MISSED APCH:</b> Climb on 248° to 2090' (656') , then turn RIGHT onto 068° climbing to 3410' (1976') , then according to chart.							MSA KT NDB

Alt Set: MM (hPa on req)      QNH on req (QFE)      Trans level: FL 60      Trans alt: 4440' (3006')



QNH	(QFE)
4440'	(3006' - 900m)
3410'	(1976' - 600m)
2750'	(1316' - 400m)
2130'	(696' - 210m)
2090'	(656' - 200m)
1670'	(236' - 70m)



Gnd speed-Kts	70	90	100	120	140	160	HIALS	2090' (656')	on 248°	068°	3410' (1976')
Descent Angle	2.67°	331	425	472	567	661	PAPI	↑	→	→	↑
MAP at LMM											

STRAIGHT-IN LANDING RWY 25			
2 NDB or KT NDB		K NDB	
MDA(H) 1740'(306')		MDA(H) 1990'(556')	
	ALS out		ALS out
A			
B	1200m	RVR 1500m VIS 1600m	1200m RVR 1500m VIS 1600m
C			2400m
D		RVR 1500m VIS 1600m	2400m 2800m

PANS OPS

## Chart changes since cycle 08-2019

ADD = added chart, REV = revised chart, DEL = deleted chart.

ACT	PROCEDURE IDENT	INDEX	REV DATE	EFF DATE
-----	-----------------	-------	----------	----------

**STAVROPOL, (SHPAKOVSKOYE - URMT)**

## **TERMINAL CHART CHANGE NOTICES**

**No Chart Change Notices for Airport URMT**