

List of pages in this Trip Kit

Trip Kit Index
Airport Information For URML
Terminal Charts For URML
Revision Letter For Cycle 09-2019
Change Notices
Notebook

General Information

Location: MAKHACHKALA RUS
ICAO/IATA: URML / MCX
Lat/Long: N42° 49.0', E047° 39.1'
Elevation: 16 ft

Airport Use: Public
Daylight Savings: Not Observed
UTC Conversion: -3:00 = UTC
Magnetic Variation: 7.0° E

Fuel Types: Jet A-1
Customs: Yes
Airport Type: IFR
Landing Fee: Yes
Control Tower: Yes
Jet Start Unit: No
LLWS Alert: No
Beacon: No

Sunrise: 0133 Z
Sunset: 1559 Z

Runway Information

Runway: 14
Length x Width: 8661 ft x 148 ft
Surface Type: asphalt
TDZ-Elev: 8 ft
Lighting: Edge, ALS

Runway: 32
Length x Width: 8661 ft x 148 ft
Surface Type: asphalt
TDZ-Elev: 15 ft
Lighting: Edge, ALS

Communication Information

ATIS: 124.800 Non-English
ATIS: 125.475
Makhachkala Tower: 121.300 Non-English
Makhachkala Tower: 124.000 Secondary
Makhachkala Approach: 124.000 Secondary
Makhachkala Approach: 119.700 Non-English
Makhachkala Transit Operations: 131.600
Makhachkala Radar: 121.300
Makhachkala Radar: 124.000 Secondary

URML/MCX
UYTASH

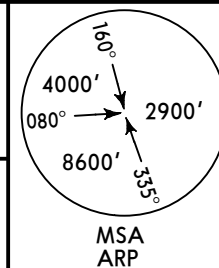
JEPPESEN
21 JUL 17 **10-2**

MAKHACHKALA, RUSSIA

STAR

ATIS
125.475 (Russian **124.8**)
Apt Elev
16'

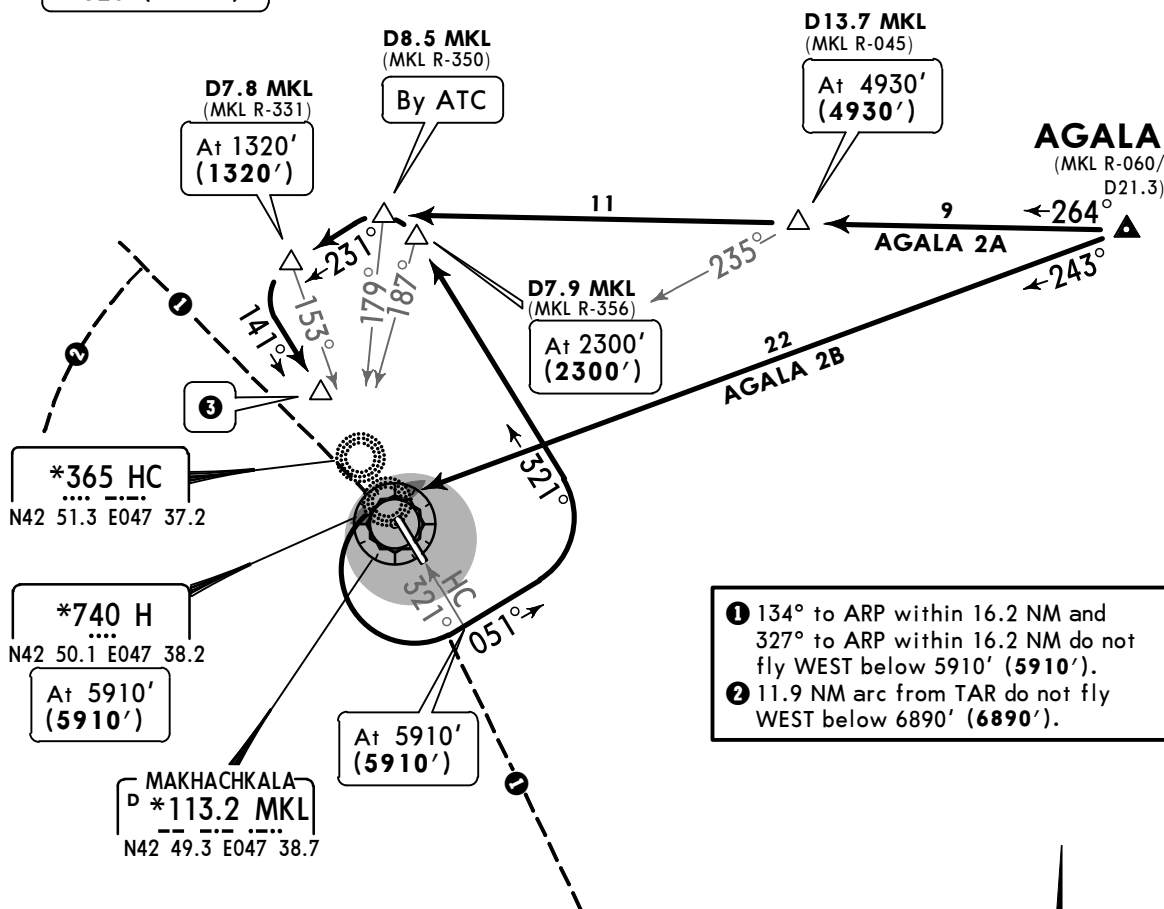
Alt Set: MM (hPa on request) QNH on request (QFE)
Trans level: FL110 Trans alt: 9860' (**9860'**)
1. **DME required.**
2. Crossings at airway exit points by ATC.



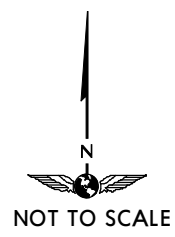
AGALA 2A [AGAL2A]
UNDER RADAR CONTROL

AGALA 2B [AGAL2B]
RWY 14 ARRIVALS

3
Intercept final at
1320' (1320')



- 1** 134° to ARP within 16.2 NM and 327° to ARP within 16.2 NM do not fly WEST below 5910' (5910').
- 2** 11.9 NM arc from TAR do not fly WEST below 6890' (6890').



FT/METER CONVERSION	
QNH	
1970'	- 600m
1320'	- 400m

ALT/HEIGHT CONVERSION	
QNH	(QFE)
9860'	(9860' - 3000m)
6890'	(6890' - 2100m)
5910'	(5910' - 1800m)
4930'	(4930' - 1500m)
2300'	(2300' - 700m)
1320'	(1320' - 400m)

WARNING
Within sector 200° - 300° and a distance 2.2NM - 2.7NM from ARP is a mountain range 1320' - 1970' high.

STAR	ROUTING
AGALA 2A	On 264° track via D13.7 MKL to D8.5 MKL, turn LEFT, 231° track to intercept final.
AGALA 2B	Intercept 243° bearing to H, turn LEFT, 051° track, descend after passing 321° bearing to HC, turn LEFT, 321° track to D7.9 MKL, turn LEFT, 231° track to intercept final.

URML/MCX
UYTASH

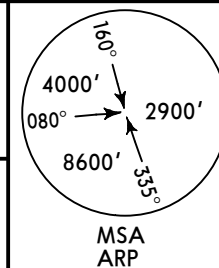
JEPPESEN
21 JUL 17 (10-2A)

MAKHACHKALA, RUSSIA

STAR

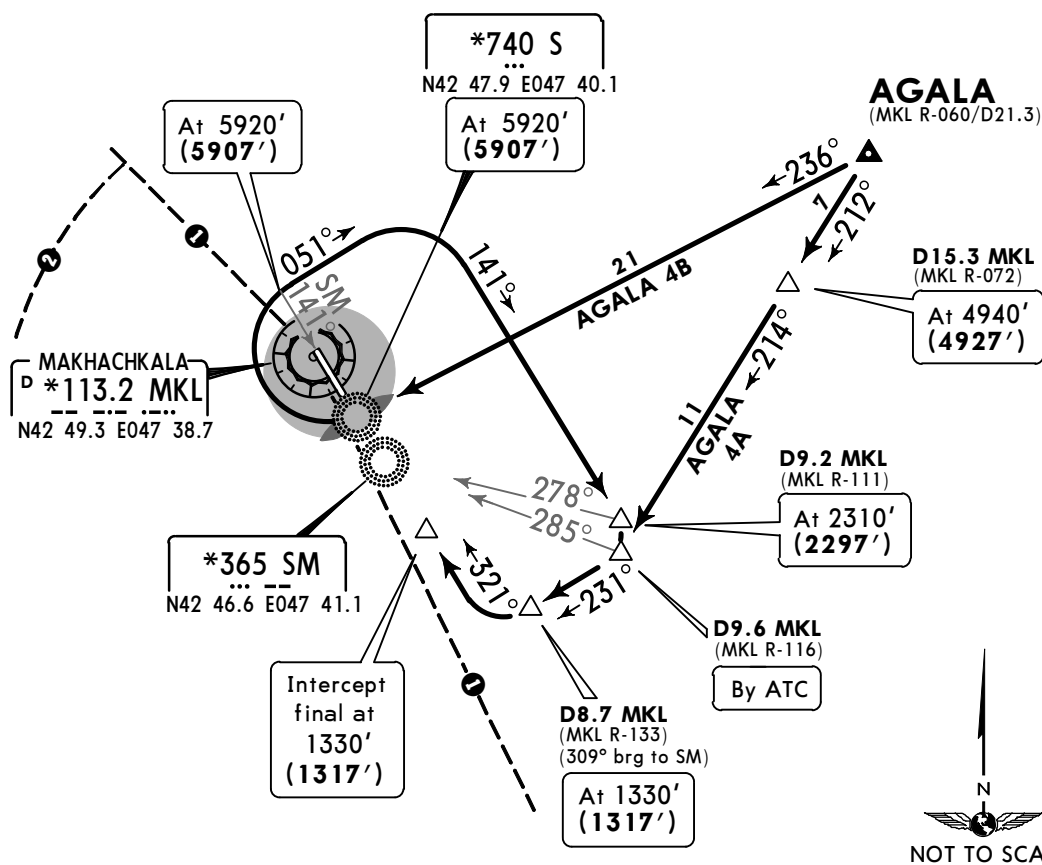
ATIS
125.475 (Russian 124.8)
Apt Elev
16'

Alt Set: MM (hPa on request) QNH on request (QFE)
Trans level: FL110 Trans alt: 9860' (9847')
1. DME required.
2. Crossings at airway exit points by ATC.



AGALA 4A [AGAL4A]
UNDER RADAR CONTROL

AGALA 4B [AGAL4B]
RWY 32 ARRIVALS



FT/METER CONVERSION	
QNH	
1970'	600m
1320'	400m

ALT/HEIGHT CONVERSION	
QNH	(QFE)
9860'	(9847' - 3000m)
6910'	(6897' - 2100m)
5920'	(5907' - 1800m)
4940'	(4927' - 1500m)
2310'	(2297' - 700m)
1330'	(1317' - 400m)

- 1 134° to ARP within 16.2 NM and 327° to ARP within 16.2 NM do not fly WEST below 5920' (5907').
- 2 11.9 NM arc from TAR do not fly WEST below 6910' (6897').

WARNING
Within sector 200° - 300° and a distance 2.2NM - 2.7NM from ARP is a mountain range 1320' - 1970' high.

STAR	ROUTING
AGALA 4A	On 212° track to D15.3 MKL, 214° track to D9.6 MKL, turn RIGHT, 231° track to intercept final.
AGALA 4B	Intercept 236° bearing to S, turn RIGHT, 051° track, descend after passing 141° bearing to SM, turn RIGHT, 141° track to D9.2 MKL, turn RIGHT, 231° track to intercept final.

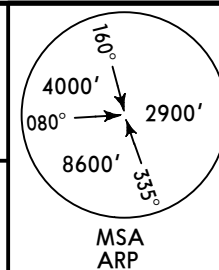
URML/MCX
UYTASH

JEPPESEN
21 JUL 17 **(10-2B)**

MAKHACHKALA, RUSSIA
STAR

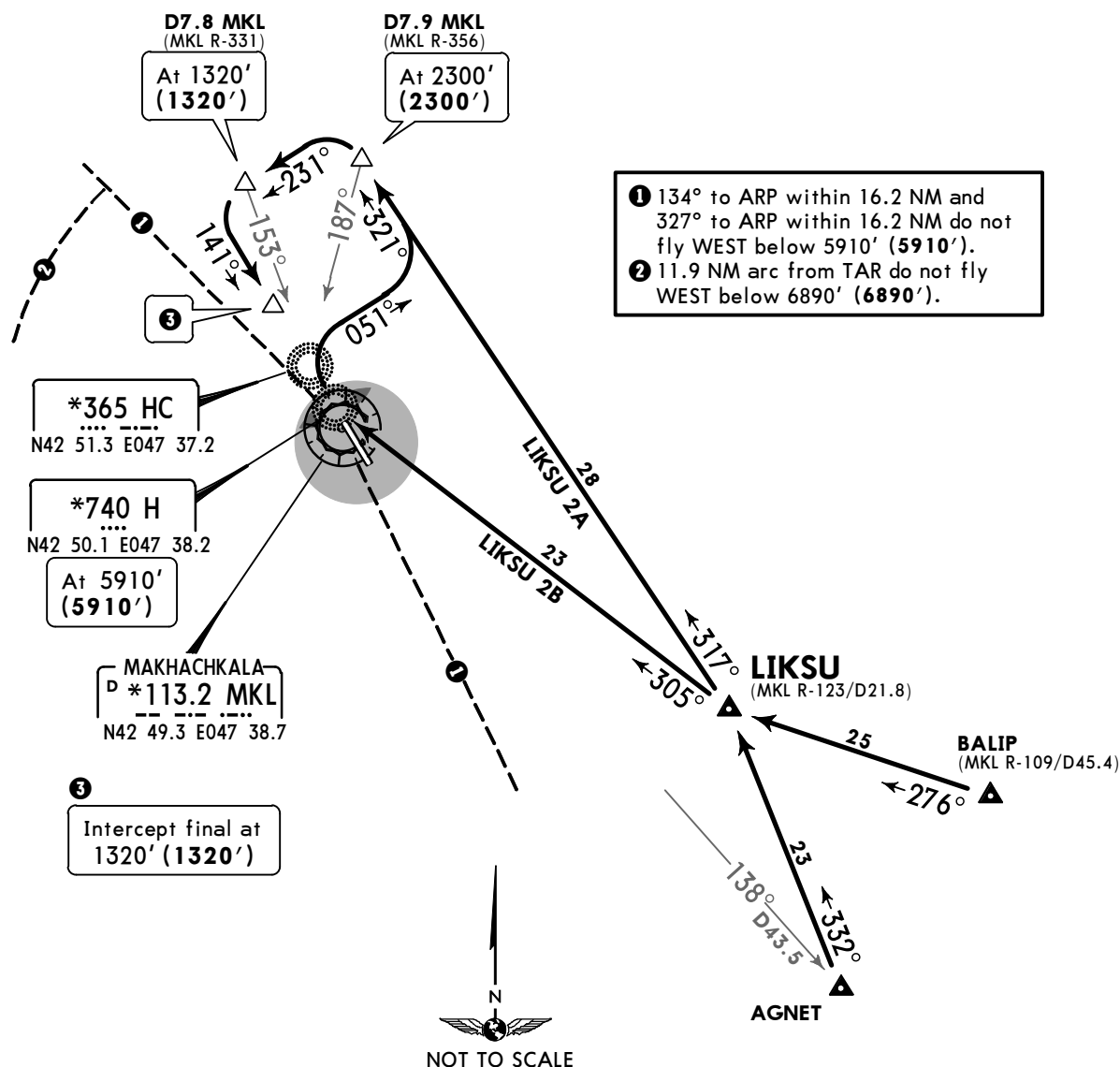
ATIS
125.475 (Russian **124.8**)
Apt Elev
16'

Alt Set: MM (hPa on request) QNH on request (QFE)
Trans level: FL110 Trans alt: 9860' (**9860'**)
1. **DME required.**
2. Crossings at airway exit points by ATC.



LIKSU 2A [LIKS2A]
UNDER RADAR CONTROL

LIKSU 2B [LIKS2B]
RWY 14 ARRIVALS



FT/METER CONVERSION	
QNH	
1970'	- 600m
1320'	- 400m

ALT/HEIGHT CONVERSION	
QNH (QFE)	
9860'	(9860' - 3000m)
6890'	(6890' - 2100m)
5910'	(5910' - 1800m)
2300'	(2300' - 700m)
1320'	(1320' - 400m)

WARNING

Within sector 200° - 300° and a distance 2.2NM - 2.7NM from ARP is a mountain range 1320' - 1970' high.

STAR	ROUTING
LIKSU 2A	On 317° track to D7.9 MKL, turn LEFT, 231° track to intercept final.
LIKSU 2B	Intercept 305° bearing to H, turn RIGHT, 051° track, turn LEFT, 321° track to D7.9 MKL, turn LEFT, 231° track to intercept final.

URML/MCX
UYTASH

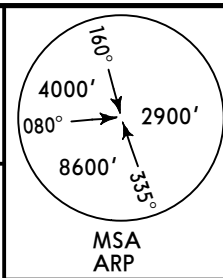
JEPPESEN
21 JUL 17 **10-2C**

MAKHACHKALA, RUSSIA

STAR

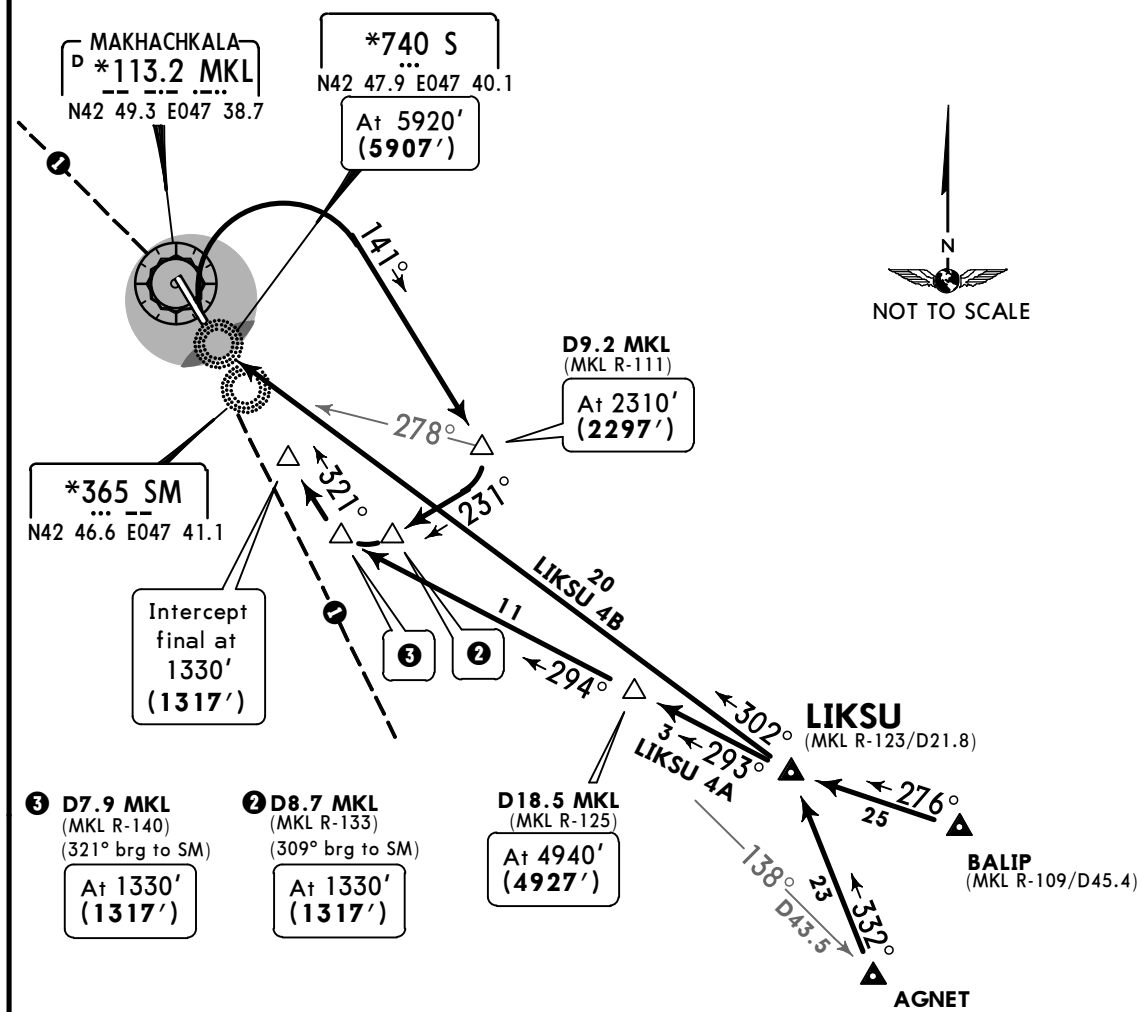
ATIS
125.475 (Russian **124.8**)
Apt Elev
16'

Alt Set: MM (hPa on request) QNH on request (QFE)
Trans level: FL110 Trans alt: 9860' (**9847'**)
1. **DME required.**
2. Crossings at airway exit points by ATC.



LIKSU 4A [LIKS4A]
UNDER RADAR CONTROL

LIKSU 4B [LIKS4B]
RWY 32 ARRIVALS



FT/METER CONVERSION	
QNH	
1970'	- 600m
1320'	- 400m

ALT/HEIGHT CONVERSION	
QNH (QFE)	
9860'	(9847' - 3000m)
5920'	(5907' - 1800m)
4940'	(4927' - 1500m)
2310'	(2297' - 700m)
1330'	(1317' - 400m)

① 134° to ARP within 16.2 NM and 327° to ARP within 16.2 NM do not fly WEST below 5920' (5907').

WARNING
Within sector 200° - 300° and a distance 2.2NM - 2.7NM from ARP is a mountain range 1320' - 1970' high.

STAR	ROUTING
LIKSU 4A	On 293° track to D18.5 MKL, 294° track to D7.9 MKL to intercept final.
LIKSU 4B	Intercept 302° bearing to S, turn RIGHT, 141° track to D9.2 MKL, turn RIGHT, 231° track to intercept final.

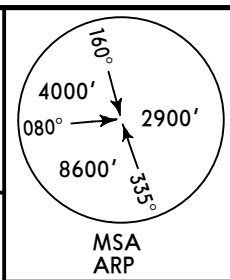
URML/MCX
UYTASH

JEPPESEN
21 JUL 17 **(10-2D)**

MAKHACHKALA, RUSSIA

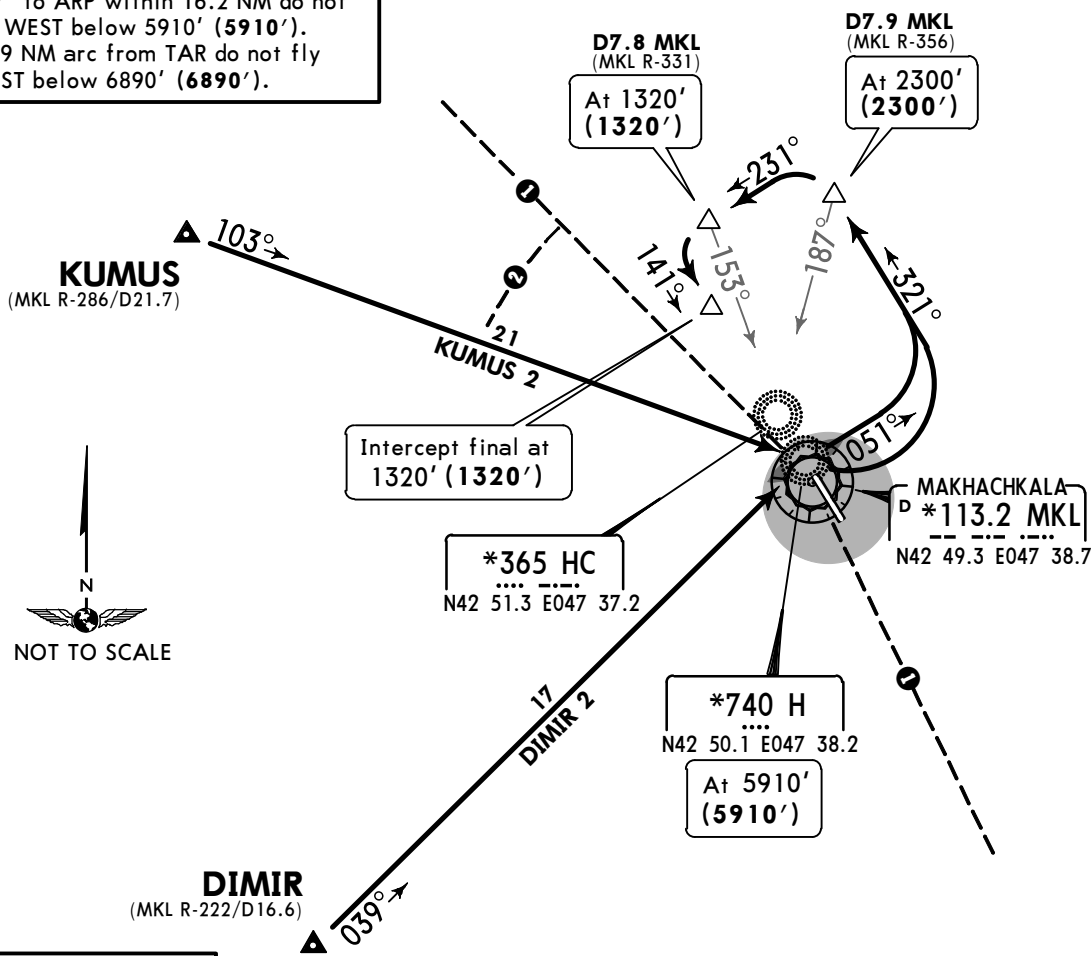
STAR

ATIS 125.475 (Russian 124.8)	Alt Set: MM (hPa on request) QNH on request (QFE) Trans level: FL110 Trans alt: 9860' (9860') 1. DME required. 2. Flights are allowed under RADAR control and steady operation of airborne navigation equipment. 3. Crossings at airway entry points by ATC.
Apt Elev 16'	



DIMIR 2
KUMUS 2
UNDER RADAR CONTROL
RWY 14 ARRIVALS

- ① 134° to ARP within 16.2 NM and 327° to ARP within 16.2 NM do not fly WEST below 5910' (5910').
- ② 11.9 NM arc from TAR do not fly WEST below 6890' (6890').



FT/METER CONVERSION	
QNH	
1970'	- 600m
1320'	- 400m
ALT/HEIGHT CONVERSION	
QNH	(QFE)
9860'	(9860' - 3000m)
6890'	(6890' - 2100m)
5910'	(5910' - 1800m)
2300'	(2300' - 700m)
1320'	(1320' - 400m)

WARNING
Within sector 200° - 300° and a distance 2.2NM - 2.7NM from ARP is a mountain range 1320' - 1970' high.

STAR	ROUTING
DIMIR 2	Intercept 039° bearing to H, 051° track, turn LEFT, 321° track to D7.9 MKL, turn LEFT, 231° track to intercept final.
KUMUS 2 By ATC	Intercept 103° bearing to H, turn LEFT, 321° track to D7.9 MKL, turn LEFT, 231° track to intercept final.

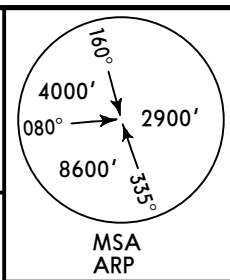
URML/MCX
UYTASH

JEPPESEN
21 JUL 17 (10-2E)

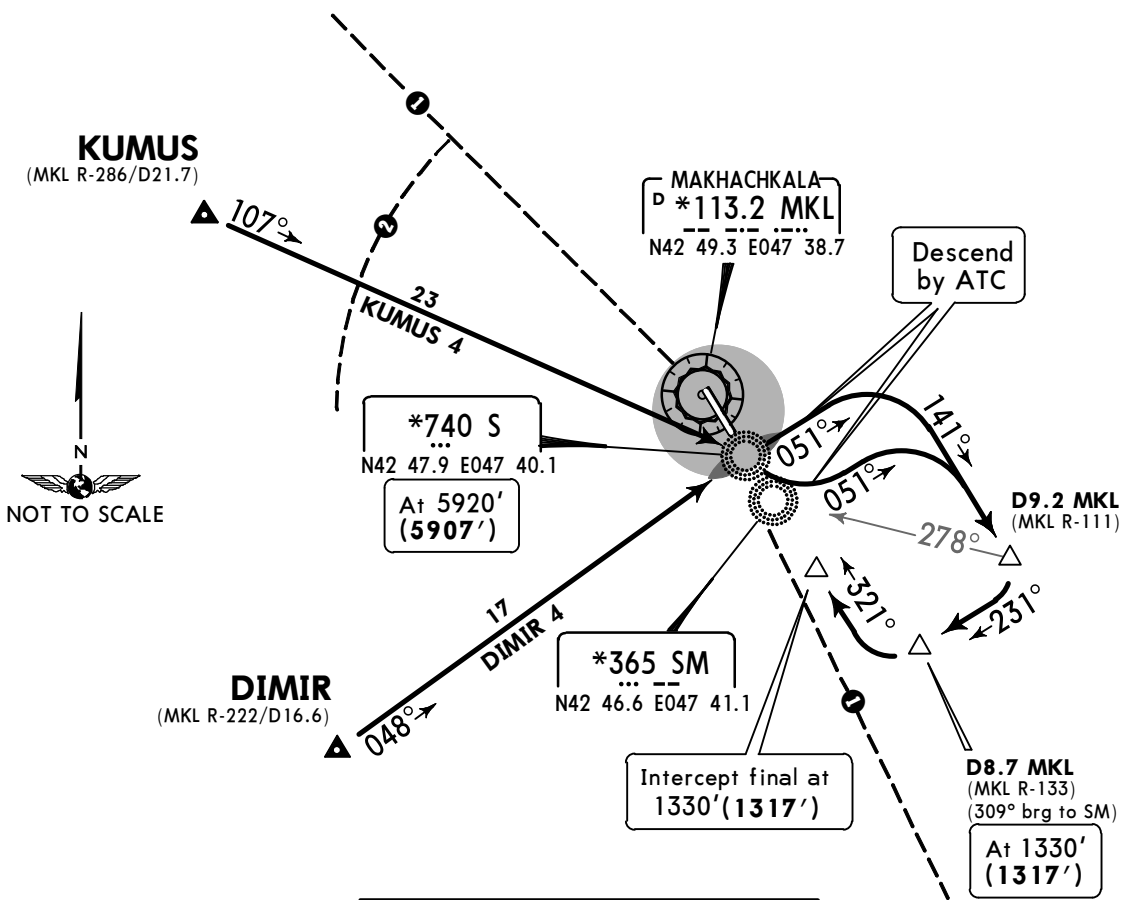
MAKHACHKALA, RUSSIA

STAR

ATIS 125.475 (Russian 124.8)	Alt Set: MM (hPa on request) QNH on request (QFE) Trans level: FL110 Trans alt: 9860' (9847') 1. DME required. 2. Flights are allowed under RADAR control and steady operation of airborne navigation equipment. 3. Crossings at airway entry points by ATC.
Apt Elev 16'	



DIMIR 4
KUMUS 4
RWY 32 ARRIVALS
UNDER RADAR CONTROL



- ① 134° to ARP within 16.2 NM and 327° to ARP within 16.2 NM do not fly WEST below 5920' (5907').
- ② 11.9 NM arc from TAR do not fly WEST below 6910' (6897').

FT/METER CONVERSION	
QNH	
1970'	- 600m
1320'	- 400m

ALT/HEIGHT CONVERSION	
QNH (QFE)	
9860'	(9847' - 3000m)
6910'	(6897' - 2100m)
5920'	(5907' - 1800m)
1330'	(1317' - 400m)

WARNING
Within sector 200° - 300° and a distance 2.2NM - 2.7NM from ARP is a mountain range 1320' - 1970' high.

STAR	ROUTING
DIMIR 4	Intercept 048° bearing to S, 051° track, turn RIGHT, 141° track to D9.2 MKL, turn RIGHT, 231° track to intercept final.
KUMUS 4 By ATC	Intercept 107° bearing to S, turn LEFT, 051° track, turn RIGHT, 141° track to D9.2 MKL, turn RIGHT, 231° track to intercept final.

URML/MCX
UYTASH

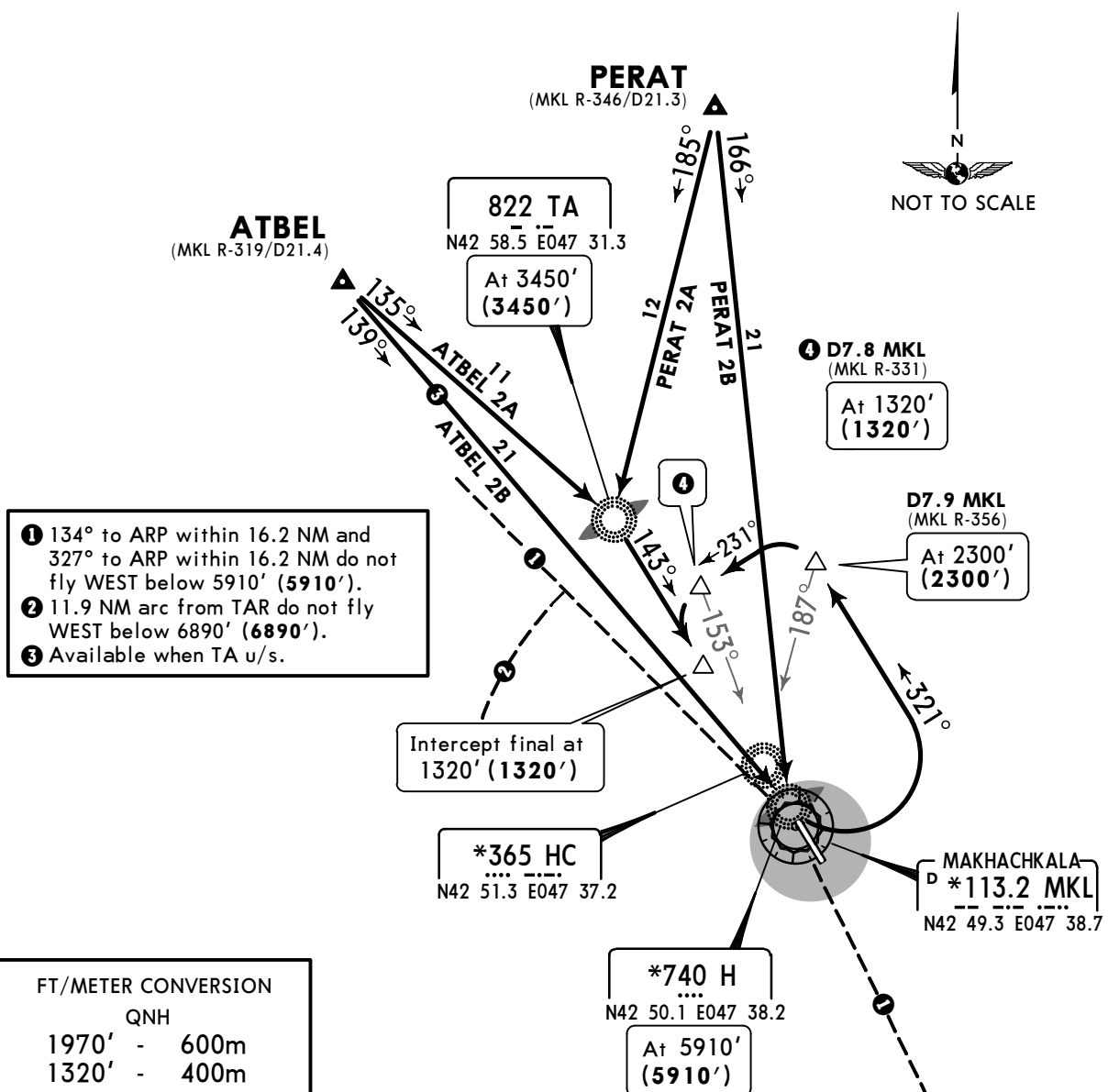
JEPPESEN
21 JUL 17 (10-2F)

MAKHACHKALA, RUSSIA

STAR

ATIS 125.475 (Russian 124.8)	Alt Set: MM (hPa on request) QNH on request (QFE) Trans level: FL110 Trans alt: 9860' (9860') 1. DME required. 2. Crossings at airway exit points by ATC.	<p>MSA ARP</p>
Apt Elev 16'		

ATBEL 2A [ATBE2A] **ATBEL 2B [ATBE2B]**
PERAT 2A [PERA2A] **PERAT 2B [PERA2B]**
 UNDER RADAR CONTROL
RWY 14 ARRIVALS



- ① 134° to ARP within 16.2 NM and 327° to ARP within 16.2 NM do not fly WEST below 5910' (5910').
- ② 11.9 NM arc from TAR do not fly WEST below 6890' (6890').
- ③ Available when TA u/s.

FT/METER CONVERSION	
QNH	
1970'	600m
1320'	400m

ALT/HEIGHT CONVERSION	
QNH	(QFE)
9860'	(9860' - 3000m)
6890'	(6890' - 2100m)
5910'	(5910' - 1800m)
3450'	(3450' - 1050m)
2300'	(2300' - 700m)
1320'	(1320' - 400m)

WARNING
 Within sector 200° - 300° and a distance 2.2NM - 2.7NM from ARP is a mountain range 1320' - 1970' high.

STAR	ROUTING
ATBEL 2A	Intercept 135° bearing to TA, 143° track to intercept final.
ATBEL 2B	Intercept 139° bearing to H, turn LEFT, 321° track to D7.9 MKL, turn LEFT, 231° track to intercept final.
PERAT 2A	Intercept 185° bearing to TA, 143° track to intercept final.
PERAT 2B	Intercept 166° bearing to H, turn LEFT, 321° track to D7.9 MKL, turn LEFT, 231° track to intercept final.

URML/MCX
UYTASH

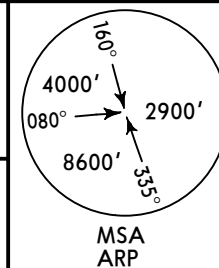
JEPPESEN
21 JUL 17 **10-2G**

MAKHACHKALA, RUSSIA

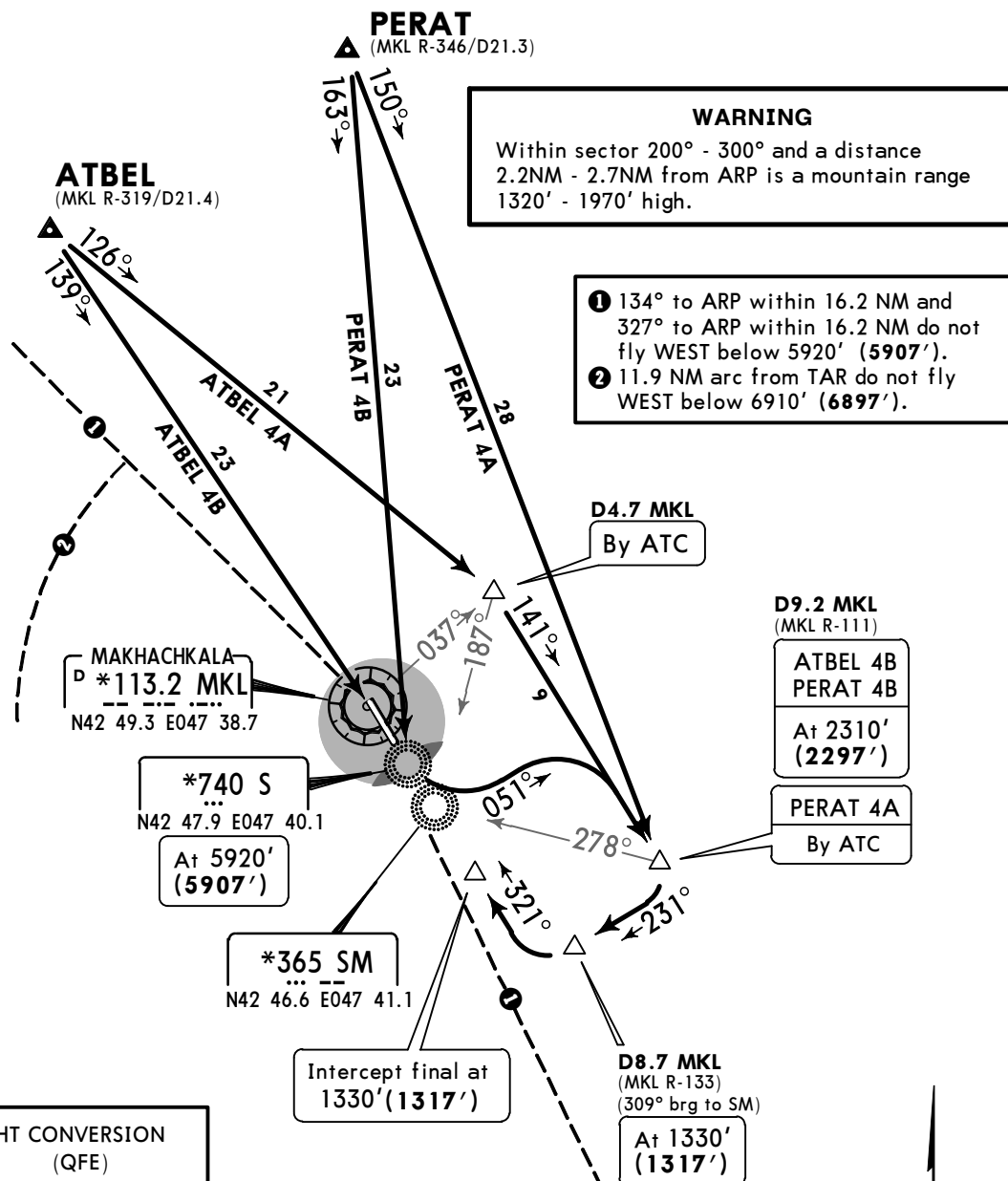
STAR

ATIS
125.475 (Russian **124.8**)
Apt Elev
16'

Alt Set: MM (hPa on request) QNH on request (QFE)
Trans level: FL110 Trans alt: 9860' (**9847'**)
1. **DME required.**
2. Crossings at airway exit points by ATC.



ATBEL 4A [ATBE4A] ATBEL 4B [ATBE4B]
PERAT 4A [PERA4A] PERAT 4B [PERA4B]
UNDER RADAR CONTROL
RWY 32 ARRIVALS



ALT/HEIGHT CONVERSION	QNH (QFE)
9860'	(9847' - 3000m)
6910'	(6897' - 2100m)
5920'	(5907' - 1800m)
2310'	(2297' - 700m)
1330'	(1317' - 400m)

FT/METER CONVERSION	QNH
1970'	- 600m
1320'	- 400m

STAR	ROUTING
ATBEL 4A	On 126° track to D4.7 MKL, 141° track to D9.2 MKL, turn RIGHT, 231° track to intercept final.
ATBEL 4B	Intercept 139° bearing to S, turn LEFT, 051° track, turn RIGHT, 141° track to D9.2 MKL, turn RIGHT, 231° track to intercept final.
PERAT 4A	On 150° track to D9.2 MKL, turn RIGHT, 231° track to intercept final.
PERAT 4B	Intercept 163° bearing to S, turn LEFT, 051° track, turn RIGHT, 141° track to D9.2 MKL, turn RIGHT, 231° track to intercept final.

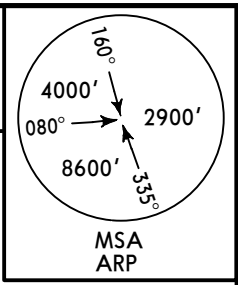
URML/MCX
UYTASH

JEPPESEN
21 JUL 17 10-3

MAKHACHKALA, RUSSIA

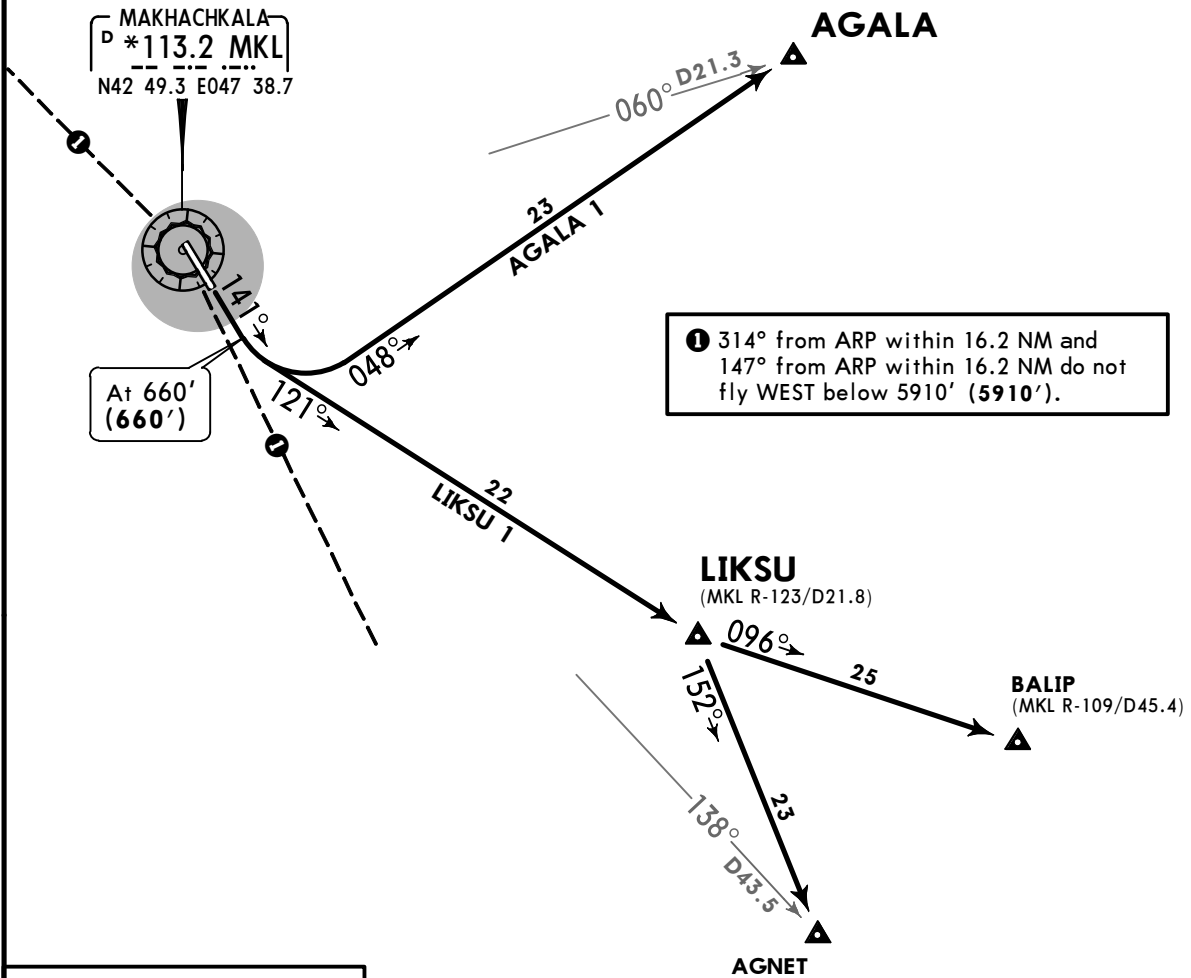
SID

Apt Elev 16'
QNH on request (QFE)
Trans level: FL110 Trans alt: 9860' (9860')
1. DME required.
2. Crossings at airway entry points by ATC.



AGALA 1
LIKSU 1
RWY 14 DEPARTURES

WARNING
Within sector 200° - 300° and a distance 2.2NM - 2.7NM from ARP is a mountain range 1320' - 1970' high.



FT/METER CONVERSION	
QNH	
1320'	- 400m
1970'	- 600m

ALT/HEIGHT CONVERSION	
QNH (QFE)	
660'	(660' - 200m)
5910'	(5910' - 1800m)
9860'	(9860' - 3000m)

SID	ROUTING
AGALA 1	Climb straight ahead to 660' (660'), turn LEFT, 048° track to AGALA.
LIKSU 1	Climb straight ahead to 660' (660'), turn LEFT, 121° track to LIKSU.

URML/MCX
UYTASH

JEPPESEN
21 JUL 17 (10-3A)

MAKHACHKALA, RUSSIA

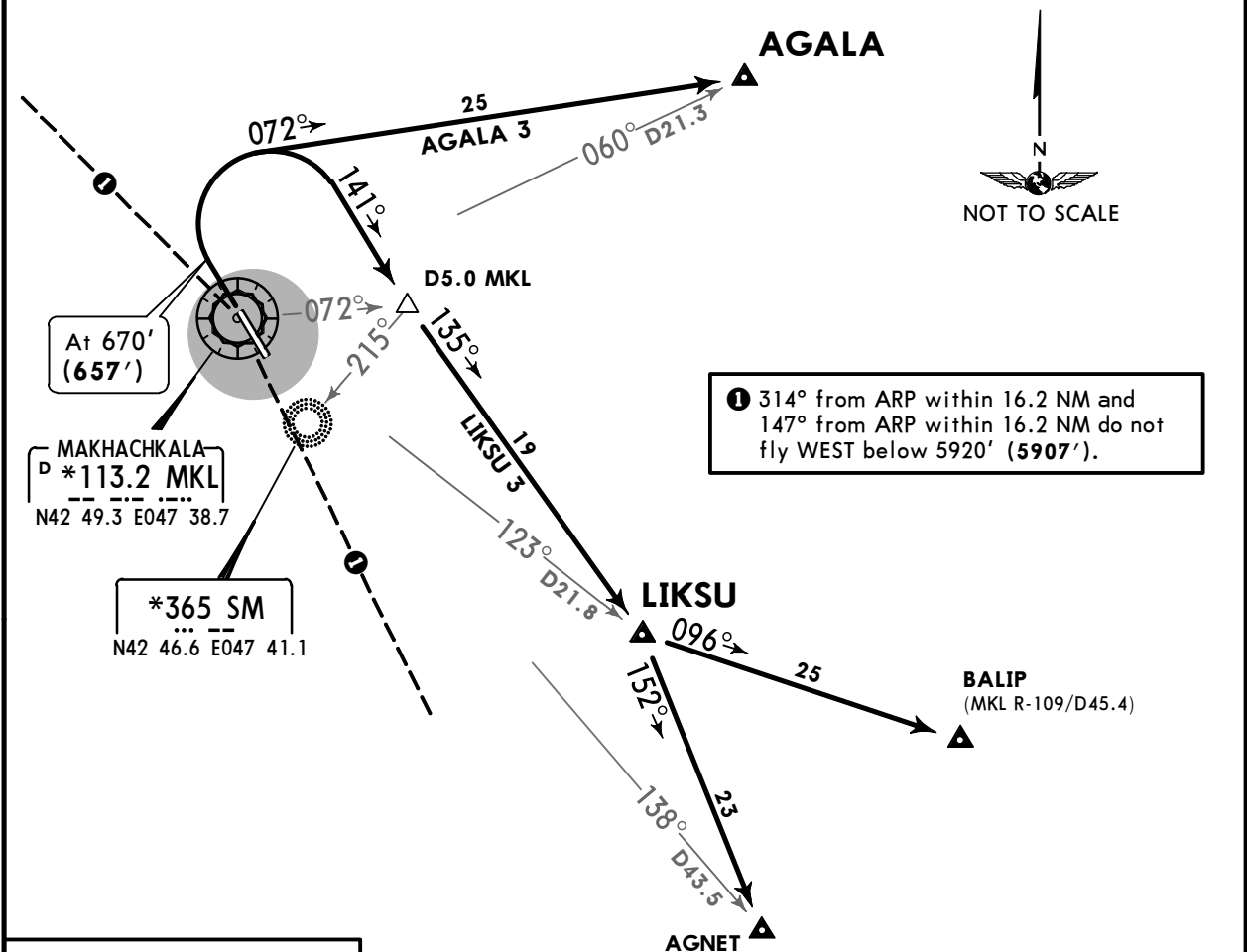
SID

Apt Elev 16'	QNH on request (QFE) Trans level: FL110 Trans alt: 9860' (9847') 1. DME required. 2. Crossings at airway entry points by ATC.	
------------------------	--	--

**AGALA 3
LIKSU 3
RWY 32 DEPARTURES**

WARNING

Within sector 200° - 300° and a distance
2.2NM - 2.7NM from ARP is a mountain range
1320' - 1970' high.



At 670' (657')

MAKHACHKALA
D *113.2 MKL
N42 49.3 E047 38.7

*365 SM
N42 46.6 E047 41.1

① 314° from ARP within 16.2 NM and
147° from ARP within 16.2 NM do not
fly WEST below 5920' (5907').

FT/METER CONVERSION	
QNH	
1320'	400m
1970'	600m

ALT/HEIGHT CONVERSION	
QNH (QFE)	
670'	(657' - 200m)
5920'	(5907' - 1800m)
9860'	(9847' - 3000m)

SID	ROUTING
AGALA 3	Climb straight ahead to 670' (657'), turn RIGHT, 072° track to AGALA.
LIKSU 3	Climb straight ahead to 670' (657'), turn RIGHT, 141° track to D5.0 MKL, 135° track to LIKSU.

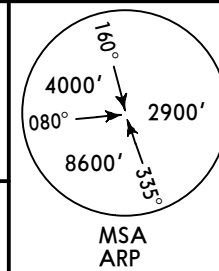
URML/MCX
UYTASH

JEPPESEN
21 JUL 17 (10-3B)

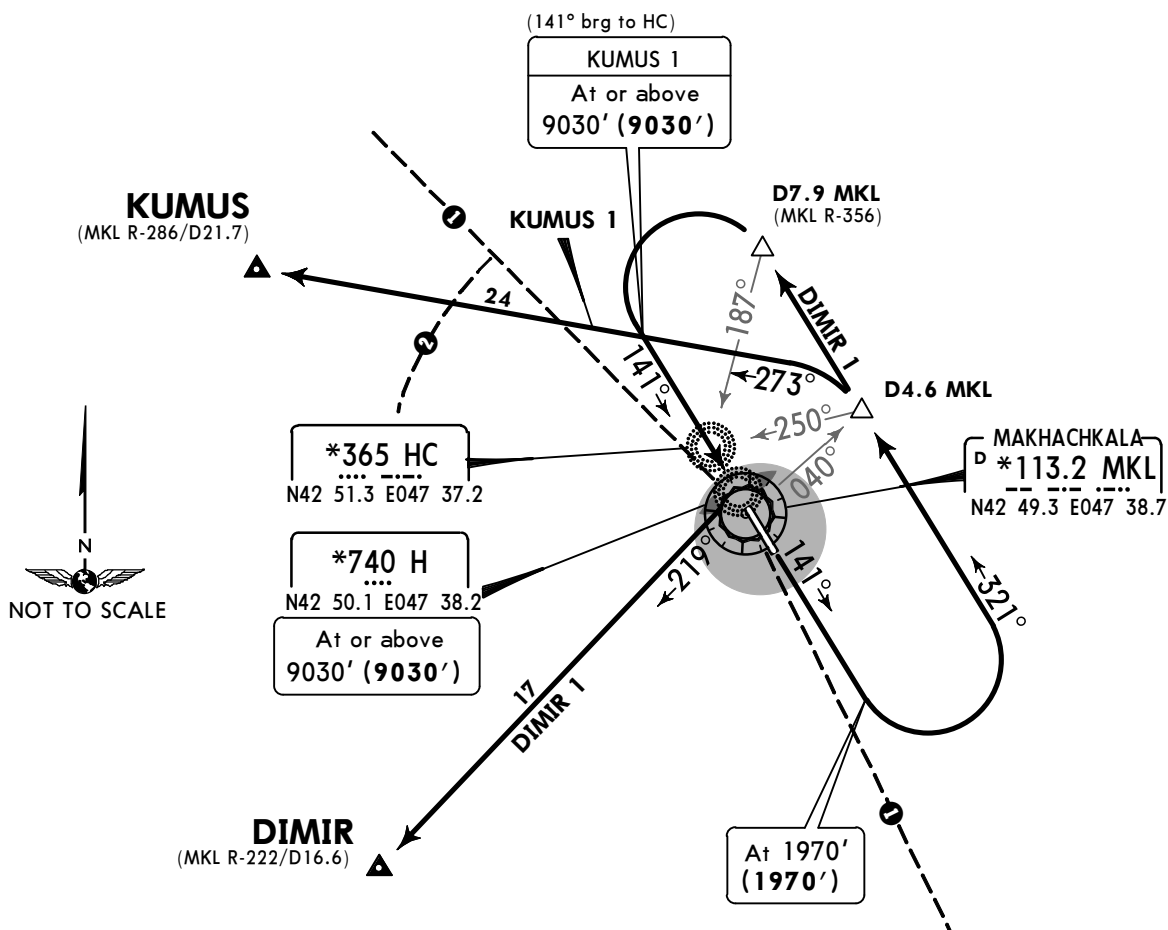
MAKHACHKALA, RUSSIA

SID

QNH on request (QFE)
Trans level: FL110 Trans alt: 9860' (9860')
1. DME required.
2. Flights are allowed under RADAR control and steady operation of airborne navigation equipment.
3. Crossings at airway entry points by ATC.



DIMIR 1
KUMUS 1
RWY 14 DEPARTURES



- ① 314° from ARP within 16.2 NM and 147° from ARP within 16.2 NM do not fly WEST below 5910' (5910').
- ② 11.9 NM arc from TAR do not fly WEST below 6890' (6890').

WARNING
Within sector 200° - 300° and a distance 2.2NM - 2.7NM from ARP is a mountain range 1320' - 1970' high.

FT/METER CONVERSION	
QNH	
1320'	400m
1970'	600m
ALT/HEIGHT CONVERSION	
QNH (QFE)	
1970'	(1970' - 600m)
5910'	(5910' - 1800m)
6890'	(6890' - 2100m)
9030'	(9030' - 2750m)
9860'	(9860' - 3000m)

SID	ROUTING
DIMIR 1	Climb straight ahead to 1970' (1970'), turn LEFT, 321° track to D7.9 MKL, turn LEFT, intercept 141° bearing to H, 219° track to DIMIR.
KUMUS 1 By ATC	Climb straight ahead to 1970' (1970'), turn LEFT, 321° track to D4.6 MKL, 273° track to KUMUS.

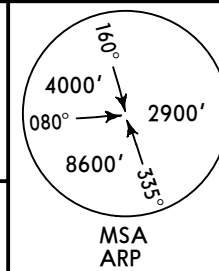
URML/MCX
UYTASH

JEPPESEN
21 JUL 17 **(10-3C)**

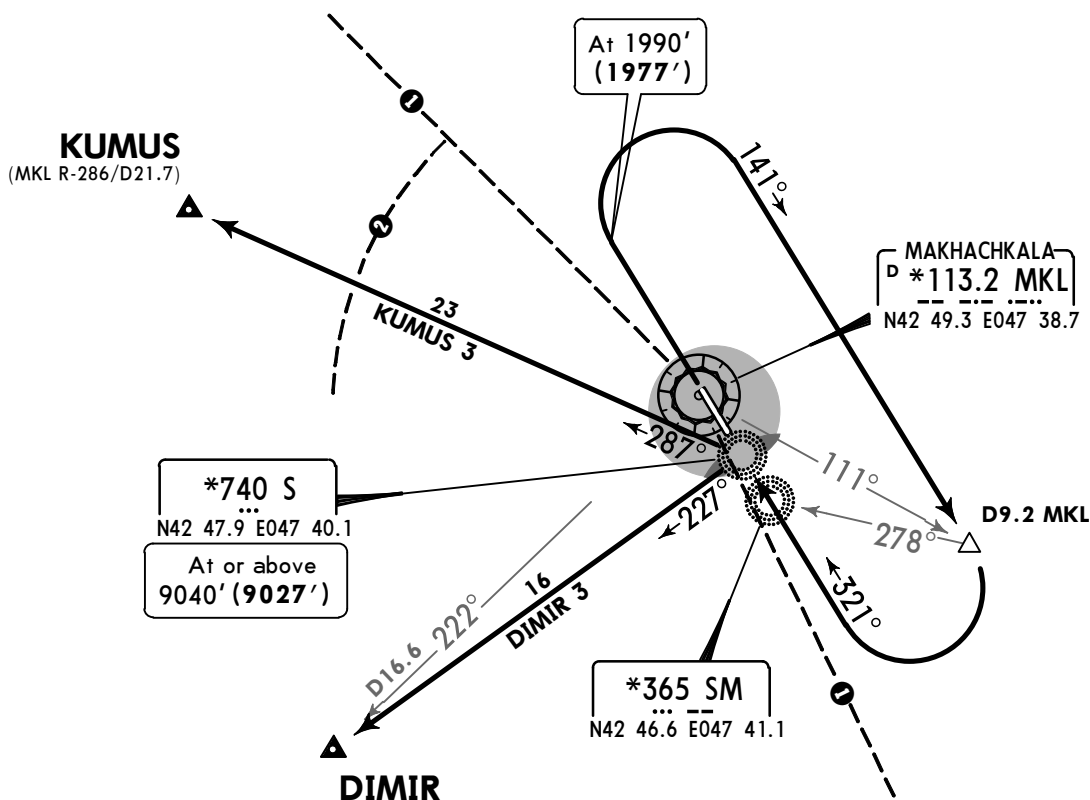
MAKHACHKALA, RUSSIA

SID

Apt Elev **16'**
QNH on request (QFE)
Trans level: FL110 Trans alt: 9860' (9847')
1. **DME required.**
2. Flights are allowed under RADAR control and steady operation of airborne navigation equipment.
3. Crossings at airway entry points by ATC.



DIMIR 3
KUMUS 3
RWY 32 DEPARTURES



- ① 314° from ARP within 16.2 NM and 147° from ARP within 16.2 NM do not fly WEST below 5920' (5907').
- ② 11.9 NM arc from TAR do not fly WEST below 6910' (6897').

WARNING
Within sector 200° - 300° and a distance 2.2NM - 2.7NM from ARP is a mountain range 1320' - 1970' high.



FT/METER CONVERSION	
QNH	
1320'	- 400m
1970'	- 600m

ALT/HEIGHT CONVERSION	
QNH	(QFE)
1990'	(1977' - 600m)
5920'	(5907' - 1800m)
6910'	(6897' - 2100m)
9040'	(9027' - 2750m)
9860'	(9847' - 3000m)

SID	ROUTING
DIMIR 3	Climb straight ahead to 1990' (1977'), turn RIGHT, 141° track to D9.2 MKL, turn RIGHT, intercept 321° bearing to S, 227° track to DIMIR.
KUMUS 3 By ATC	Climb straight ahead to 1990' (1977'), turn RIGHT, 141° track to D9.2 MKL, turn RIGHT, intercept 321° bearing to S, 287° track to KUMUS.

URML/MCX
UYTASH

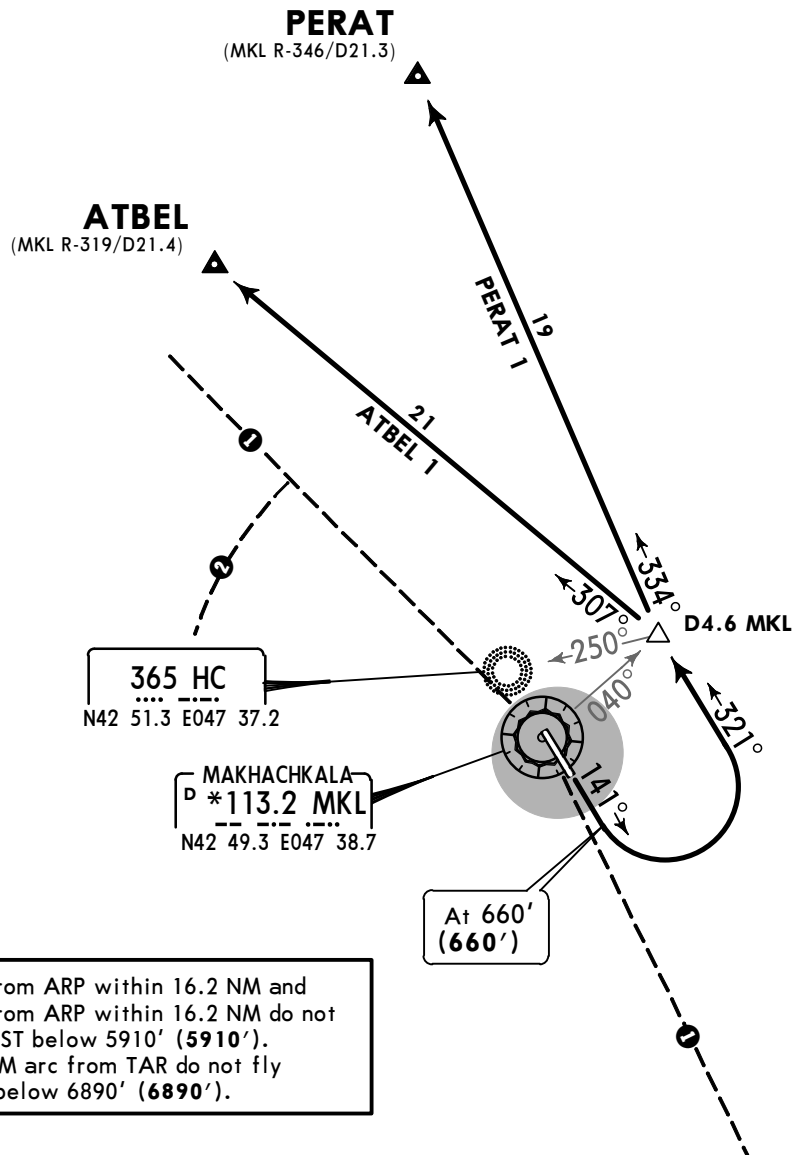
JEPPESEN
21 JUL 17 (10-3D)

MAKHACHKALA, RUSSIA

SID

Apt Elev 16'	QNH on request (QFE) Trans level: FL110 Trans alt: 9860' (9860') 1. DME required. 2. Crossings at airway entry points by ATC.	<p>MSA ARP</p>
------------------------	---	--------------------

**ATBEL 1
PERAT 1
RWY 14 DEPARTURES**



- ① 314° from ARP within 16.2 NM and 147° from ARP within 16.2 NM do not fly WEST below 5910' (5910').
- ② 11.9 NM arc from TAR do not fly WEST below 6890' (6890').

FT/METER CONVERSION	
QNH	
1320'	- 400m
1970'	- 600m
ALT/HEIGHT CONVERSION	
QNH (QFE)	
660'	(660' - 200m)
5910'	(5910' - 1800m)
6890'	(6890' - 2100m)
9860'	(9860' - 3000m)

WARNING
Within sector 200° - 300° and a distance 2.2NM - 2.7NM from ARP is a mountain range 1320' - 1970' high.

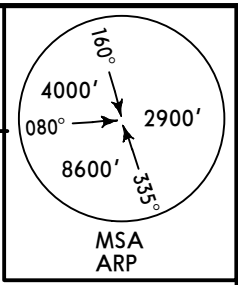
SID	ROUTING
ATBEL 1	Climb straight ahead to 660' (660'), turn LEFT, 321° track to D4.6 MKL, 307° track to ATBEL.
PERAT 1	Climb straight ahead to 660' (660'), turn LEFT, 321° track to D4.6 MKL, 334° track to PERAT.

URML/MCX
UYTASH

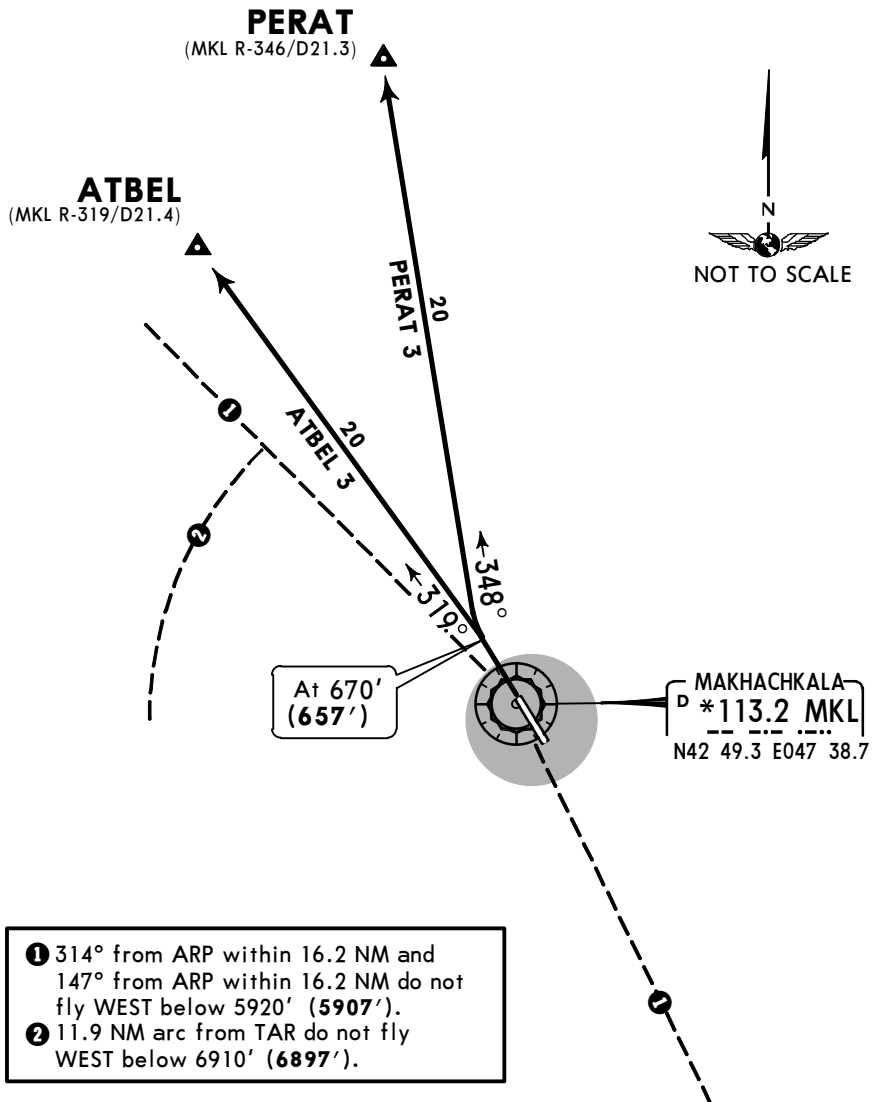
JEPPESEN
21 JUL 17 **(10-3E)**

MAKHACHKALA, RUSSIA
SID

Apt Elev **16'**
QNH on request (QFE)
Trans level: FL110 Trans alt: 9860' (9847')
1. **DME required.**
2. Crossings at airway entry points by ATC.



ATBEL 3
PERAT 3
RWY 32 DEPARTURES



FT/METER CONVERSION	
QNH	
1320'	- 400m
1970'	- 600m

ALT/HEIGHT CONVERSION	
QNH (QFE)	
670'	(657' - 200m)
5920'	(5907' - 1800m)
6910'	(6897' - 2100m)
9860'	(9847' - 3000m)

WARNING
Within sector 200° - 300° and a distance 2.2NM - 2.7NM from ARP is a mountain range 1320' - 1970' high.

SID	ROUTING
ATBEL 3	Climb straight ahead to 670' (657'), turn LEFT, 319° track to ATBEL.
PERAT 3	Climb straight ahead to 670' (657'), turn RIGHT, 348° track to PERAT.

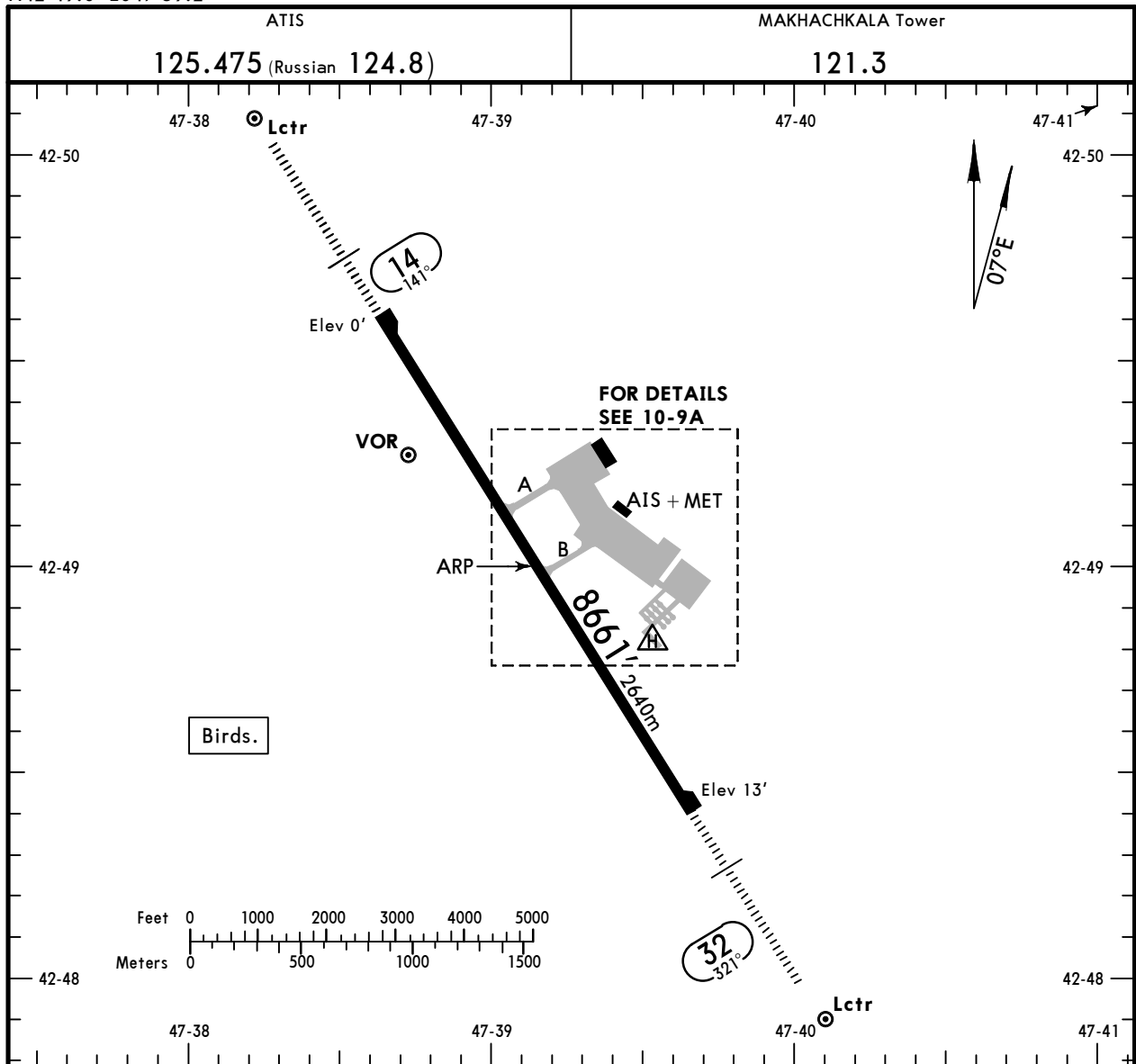
URML/MCX

Apt Elev **16'**
N42 49.0 E047 39.2

JEPPesen 31 AUG 18 **(10-9) Eff 13 Sep**

MAKHACHKALA, RUSSIA

UYTASH



ADDITIONAL RUNWAY INFORMATION

RWY	USABLE LENGTHS	LANDING BEYOND	TAKE-OFF	WIDTH
14 ¹ / ₃₂	HIRL (60m) HIALS PAPI-L (2.67°)		²	148' 45m

1 Tailwind component shall not exceed 5m/sec.

2 TAKE-OFF RUN AVAILABLE

RWY 14:

From rwy head 8661' (2640m)
 twy A int 5249' (1600m)
 twy B int 4134' (1260m)

RWY 32:

From rwy head 8661' (2640m)
 twy B int 4528' (1380m)
 twy A int 3412' (1040m)

TAKE-OFF

AIR CARRIER (JAA)

All Rwys

	LVP must be in force RCLM (DAY only) or RL	RCLM (DAY only) or RL
A		
B	250m	400m
C		
D	300m	

URML/MCX



JEPPESEN

MAKHACHKALA, RUSSIA

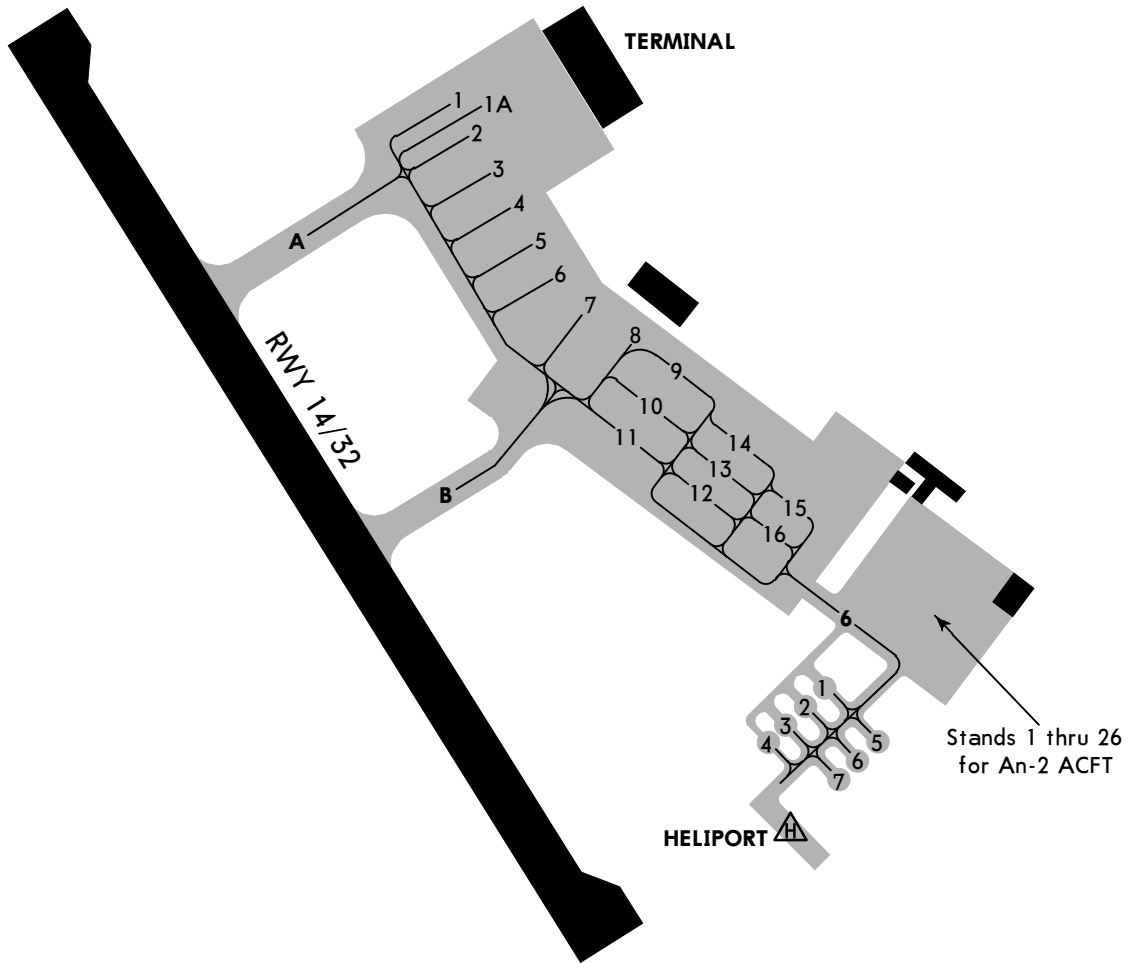
31 AUG 18

10-9A

Eff 13 Sep

UYTASH

NOT TO SCALE



INS COORDINATES	
STAND No.	COORDINATES
1	N42 49.3 E047 39.3
2 thru 4	N42 49.2 E047 39.3
5, 6	N42 49.2 E047 39.4
7, 8	N42 49.1 E047 39.4

ACFT movement with permission of TWR controller only.
 Curve radius at junctions of Twy A, Twy B and Rwy is less than normative.
 Taxiing shall be carried out strictly along painted marking, at reduced speed, with minimum radius observing 7'/2m distance between ACFT main landing gear wheels and pavement edge.

URML/MCX



Standard
MAKHACHKALA, RUSSIA
 UYTASH

STRAIGHT-IN RWY		A	B	C	D
14	ILS	200'(200')	200'(200')	230'(230')	230'(230')
	FULL	R550m	R550m	R550m	R550m
	Limited	R750m	R750m	R750m	R750m
	ALS out	R1200m	R1200m	R1200m	R1200m
	LOC	NOT AUTH	NOT AUTH	NOT AUTH	NOT AUTH
2 NDB ①		330'(330')	330'(330')	330'(330')	400'(400')
		R800m	R800m	R800m	R1100m
	ALS out	R1500m	R1500m	R1500m	R1800m
32	ILS	213'(200')	213'(200')	243'(230')	243'(230')
	FULL	R550m	R550m	R550m	R550m
	Limited	R750m	R750m	R750m	R750m
	ALS out	R1200m	R1200m	R1200m	R1200m
	LOC	NOT AUTH	NOT AUTH	NOT AUTH	NOT AUTH
2 NDB ①		350'(337')	350'(337')	350'(337')	410'(397')
		R800m	R800m	R800m	R1100m
	ALS out	R1500m	R1500m	R1500m	R1800m

① Continuous Descent Final Approach.

CIRCLE-TO-LAND	100 KT	135 KT	180 KT	205 KT
After apch to rwy 14 ②	530'(530')	530'(530')	660'(660')	700'(700')
After apch to rwy 32 ③	540'(527')	540'(527')	670'(657')	720'(707')
	V1500m	V1600m	V2400m	V3600m

② Circling height based on rwy 14 thresh elev of 0'.

③ Circling height based on rwy 32 thresh elev of 13'.

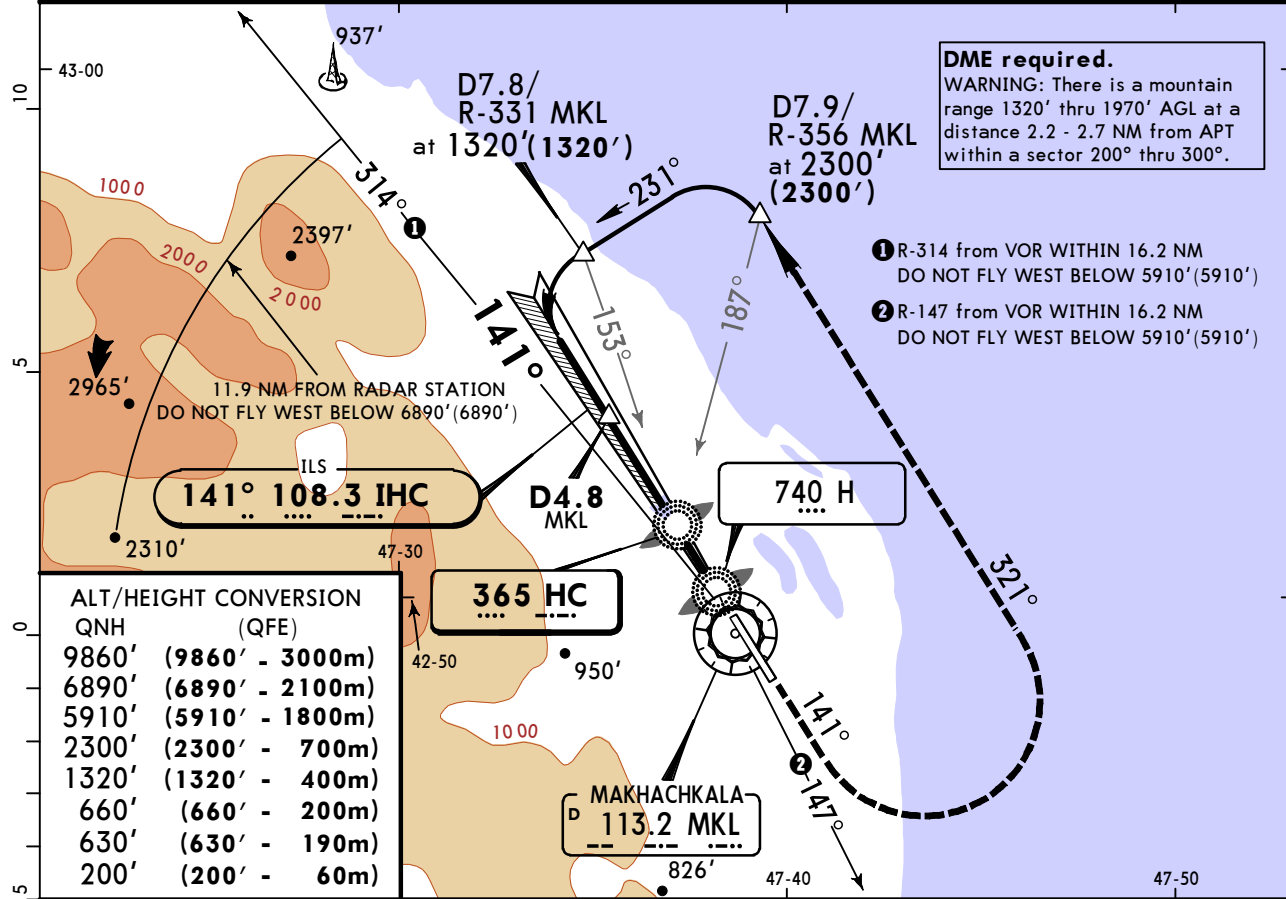
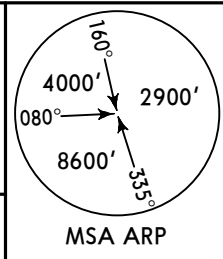
TAKE-OFF RWY 14, 32

LVP must be in Force		
RCLM (DAY only) or RL	RCLM (DAY only) or RL	NIL (DAY only)
A	400m	500m
B		
C		
D		
250m		
300m		

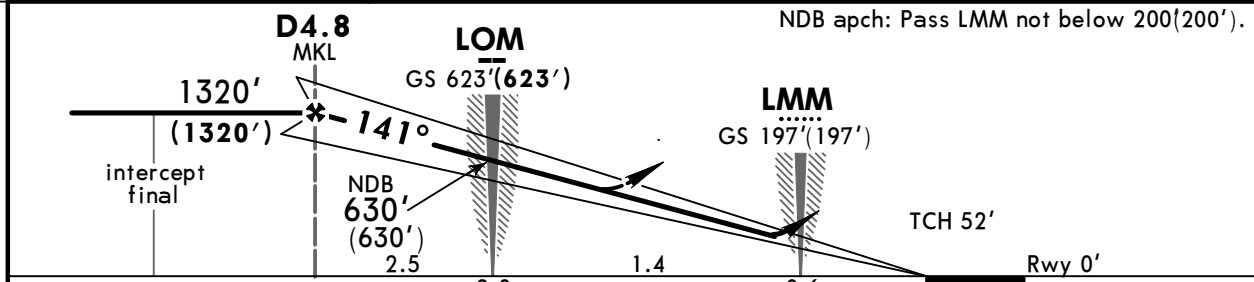
URML/MCX UYTASH

JEPPESSEN MAKHACHKALA, RUSSIA
31 AUG 18 (11-1) Eff 13 Sep ILS or 2 NDB Rwy 14

ATIS 125.475 (Russian 124.8)		MAKHACHKALA Approach 119.7		MAKHACHKALA Tower 121.3	
LOC IHC 108.3	Final Apch Crs 141°	GS LOM 623'(623')	ILS DA(H) Refer to Minimums	Apt Elev 16' Rwy 0'	
NDB HC 365		Minimum Alt D4.8 MKL 1320'(1320')	NDB MDA(H) Refer to Minimums		
MISSED APCH: Climb on 141° to 660'(660'), then turn LEFT onto 321° climbing to 2300'(2300'), then according to chart.					
Alt Set: MM (hPa on req)		QNH on req (QFE)		Trans level: FL 110	
Trans alt: 9860' (9860')					



QNH	(QFE)
9860'	(9860' - 3000m)
6890'	(6890' - 2100m)
5910'	(5910' - 1800m)
2300'	(2300' - 700m)
1320'	(1320' - 400m)
660'	(660' - 200m)
630'	(630' - 190m)
200'	(200' - 60m)



Gnd speed-Kts	70	90	100	120	140	160	HIALS	660' (660')	321°	2300' (2300')
ILS GS or NDB Desc angle	2.67°	331	425	472	567	661	756	PAPI	on 141°	LT

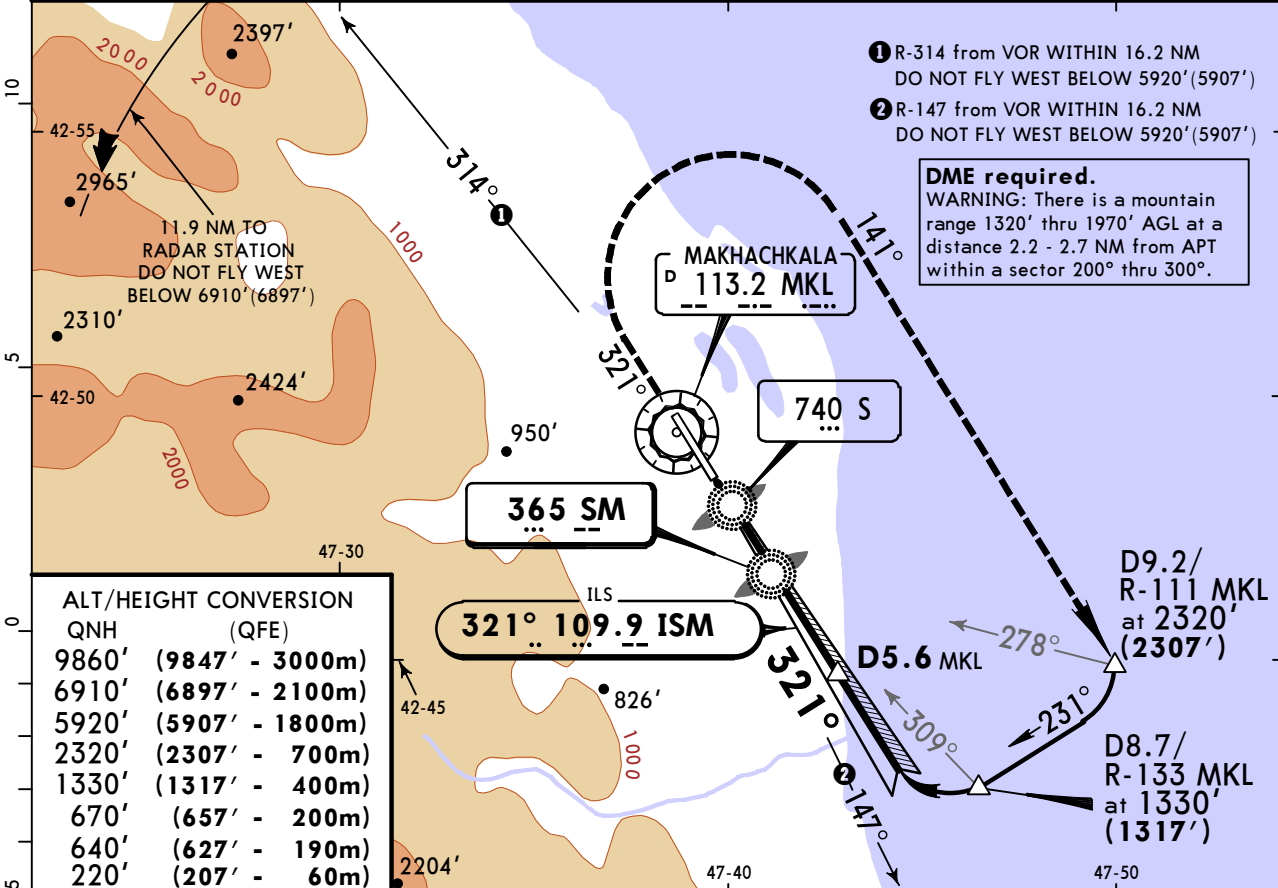
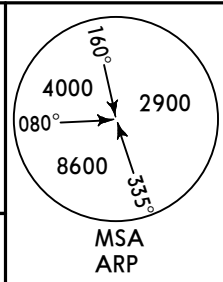
PANS OPS	ILS STRAIGHT-IN LANDING RWY 14		LOC (GS out)	NDB		CIRCLE-TO-LAND	
	DA(H)	AB: 200'(200') CD: 230'(230')		MDA(H)	ABC: 330'(330') D: 400'(400')	Max Kts	MDA(H)
A		FULL			100	530'(530')	1600m
B		ALS out			135		
C	800m	1200m	NOT AUTHORIZED		180	660'(660')	2800m
D					205	690'(690')	3600m

URML/MCX UYTASH

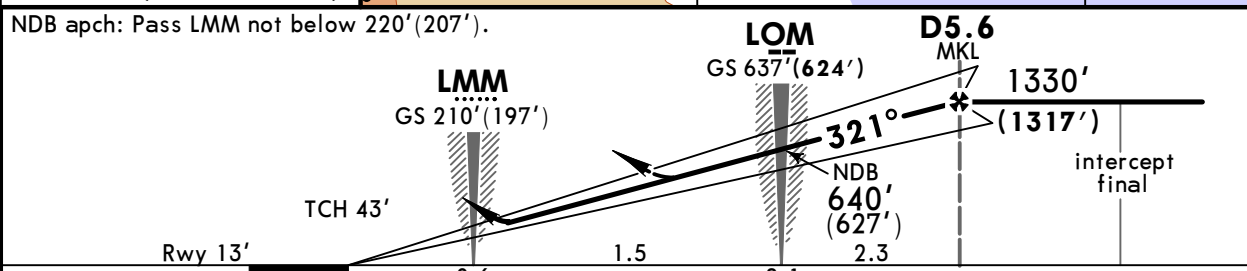
JEPPESSEN
31 AUG 18 **(11-2)** Eff 13 Sep

MAKHACHKALA, RUSSIA ILS or 2 NDB Rwy 32

ATIS 125.475 (Russian 124.8)		MAKHACHKALA Approach 119.7		MAKHACHKALA Tower 121.3	
LOC ISM 109.9	Final Apch Crs 321°	GS LOM 637' (624')	ILS DA(H) Refer to Minimums	Apt Elev 16' Rwy 13'	
NDB SM 365		Minimum Alt D5.6 MKL 1330' (1317')	NDB MDA(H) Refer to Minimums		
MISSED APCH: Climb on 321° to 670' (657'), then turn RIGHT onto 141° climbing to 2320' (2307'), then according to chart.					
Alt Set: MM (hPa on req)		QNH on req (QFE)		Trans level: FL 110	
				Trans alt: 9860' (9847')	



QNH	(QFE)
9860'	(9847' - 3000m)
6910'	(6897' - 2100m)
5920'	(5907' - 1800m)
2320'	(2307' - 700m)
1330'	(1317' - 400m)
670'	(657' - 200m)
640'	(627' - 190m)
220'	(207' - 60m)



Gnd speed-Kts	70	90	100	120	140	160	HIALS	670' (657')	on 321°	141°	2310' (2297')
ILS GS or NDB Desc angle	2.67°	331	425	472	567	661	756	PAPI		RT	

PANS OPS	ILS STRAIGHT-IN LANDING RWY 32		NDB		CIRCLE-TO-LAND 1			
	DA(H)	AB: 213' (200') CD: 243' (230')	LOC (GS out)	MDA(H)	ABC: 350' (337') D: 410' (397')	Max Kts	MDA(H)	VIS
A						100	540' (527')	1600m 2
B				1200m	2000m	135		
C	800m	1200m	NOT AUTHORIZED			180	670' (657')	2800m
D				2000m	2400m	205	710' (697')	3600m

1 Circling height based on rwy 32 thresh elev of 13'. 2 After NDB apch: VIS 2000m.
CHANGES: Communications. © JEPPESSEN, 2001, 2018. ALL RIGHTS RESERVED.

Chart changes since cycle 08-2019

ADD = added chart, REV = revised chart, DEL = deleted chart.

ACT	PROCEDURE IDENT	INDEX	REV DATE	EFF DATE
-----	-----------------	-------	----------	----------

MAKHACHKALA, (UYTASH - URML)

TERMINAL CHART CHANGE NOTICES

No Chart Change Notices for Airport URML