

List of pages in this Trip Kit

Trip Kit Index
Airport Information For UOII
Terminal Charts For UOII
Revision Letter For Cycle 09-2019
Change Notices
Notebook

General Information

Location: IGARKA RUS
ICAO/IATA: UOII / IAA
Lat/Long: N67° 26.3', E086° 37.3'
Elevation: 82 ft

Airport Use: Public
Daylight Savings: Not Observed
UTC Conversion: -7:00 = UTC
Magnetic Variation: 17.0° E

Fuel Types: Jet A-1
Customs: No
Airport Type: IFR
Landing Fee: Yes
Control Tower: No
Jet Start Unit: No
LLWS Alert: No
Beacon: No

Sunrise: 2038 Z
Sunset: 1542 Z

Runway Information

Runway: 12
Length x Width: 8245 ft x 151 ft
Surface Type: concrete
TDZ-Elev: 76 ft
Lighting: Edge, ALS

Runway: 30
Length x Width: 8245 ft x 151 ft
Surface Type: concrete
TDZ-Elev: 75 ft
Lighting: Edge

Communication Information

Igarka Podkhod Approach: 124.200 Non-English
Igarka Rayon Terminal Control Area: 120.450 Non-English
Igarka Transit Operations: 131.800 Non-English
AWIS: 126.200 Non-English

UOII/IAA
IGARKA

JEPPESEN
25 JAN 19 **10-2** **Eff 31 Jan**

IGARKA, RUSSIA
STAR

Apt Elev
82'

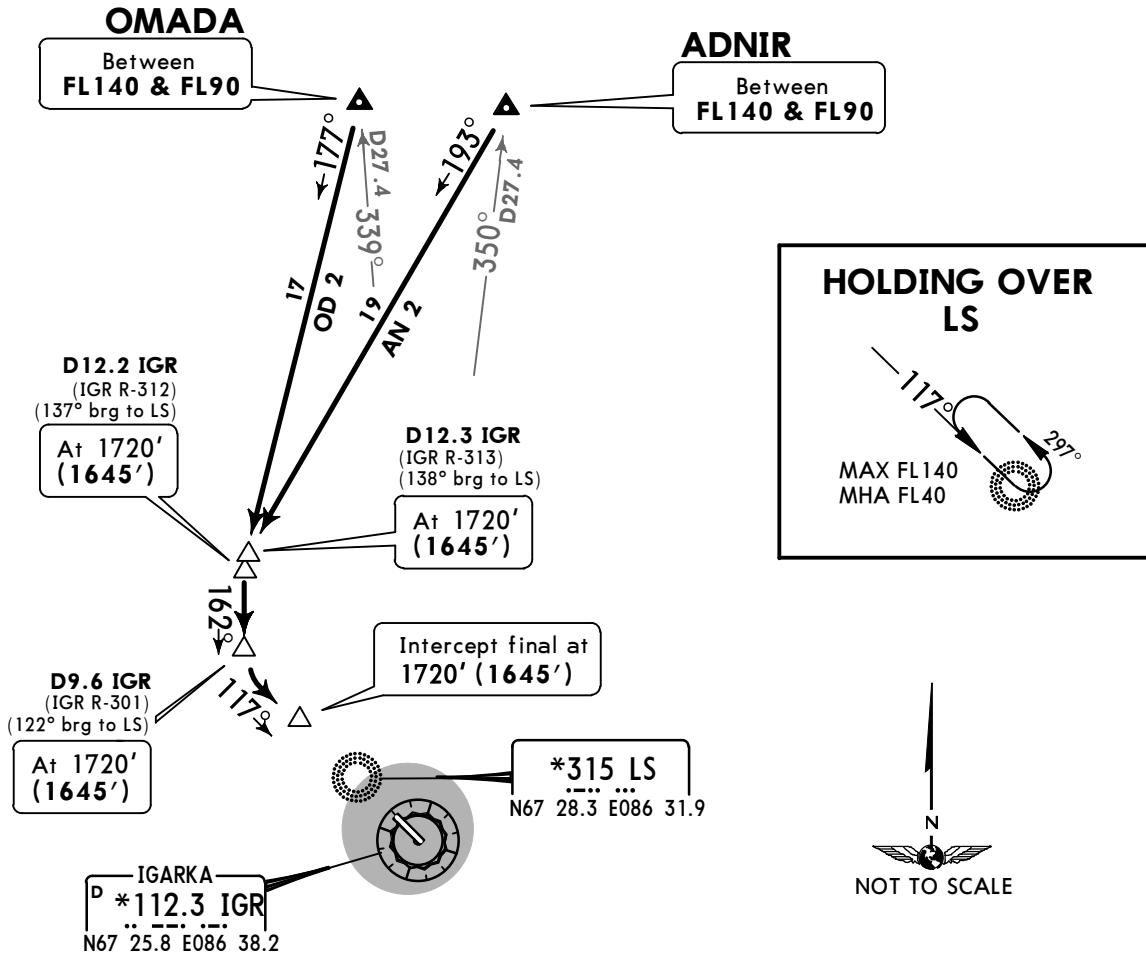
Alt Set: MM (hPa on request) QNH on request (QFE)
Trans level: FL40 Trans alt: 2060' (1985')

2100

MSA ARP
within 27 NM

AN 2, OD 2
RWY 12 ARRIVALS

FOR RUSSIAN USERS ONLY



HOLDING OVER LS

117°

297°

MAX FL140
MHA FL40

***315 LS**
N67 28.3 E086 31.9

IGARKA
***112.3 IGR**
N67 25.8 E086 38.2

NOT TO SCALE

ALT/HEIGHT CONVERSION	
QNH	(QFE)
2060'	(1985' - 600m)
1720'	(1645' - 500m)

CHANGES: Procedure note withdrawn.

© JEPPESEN, 2013, 2019. ALL RIGHTS RESERVED.

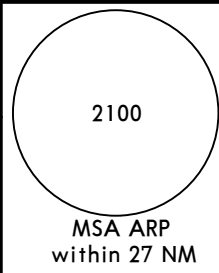
UOII/IAA
IGARKA

JEPPESEN
25 JAN 19 **10-2A** Eff 31 Jan

IGARKA, RUSSIA
STAR

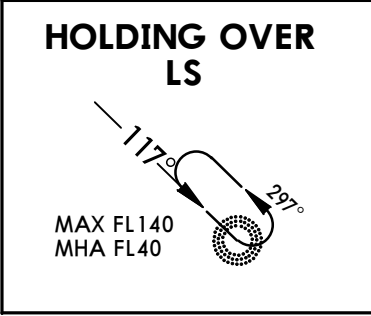
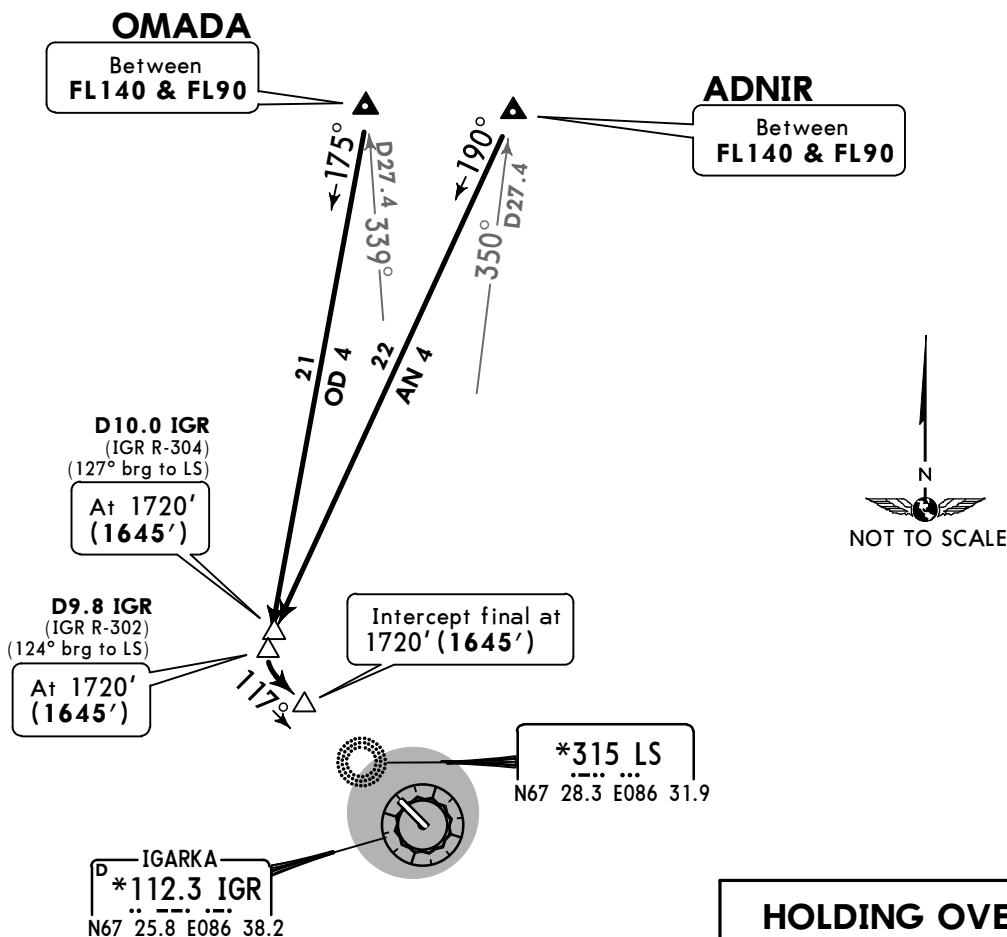
Apt Elev
82'

Alt Set: MM (hPa on request) QNH on request (QFE)
Trans level: FL40 Trans alt: 2060' (1985')



AN 4, OD 4
RWY 12 ARRIVALS

FOR RUSSIAN USERS ONLY



ALT/HEIGHT CONVERSION	
QNH	(QFE)
2060'	(1985' - 600m)
1720'	(1645' - 500m)

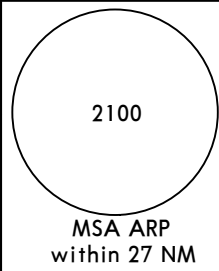
UOII/IAA
IGARKA

JEPPESEN
25 JAN 19 **(10-2B)** **Eff 31 Jan**

IGARKA, RUSSIA
STAR

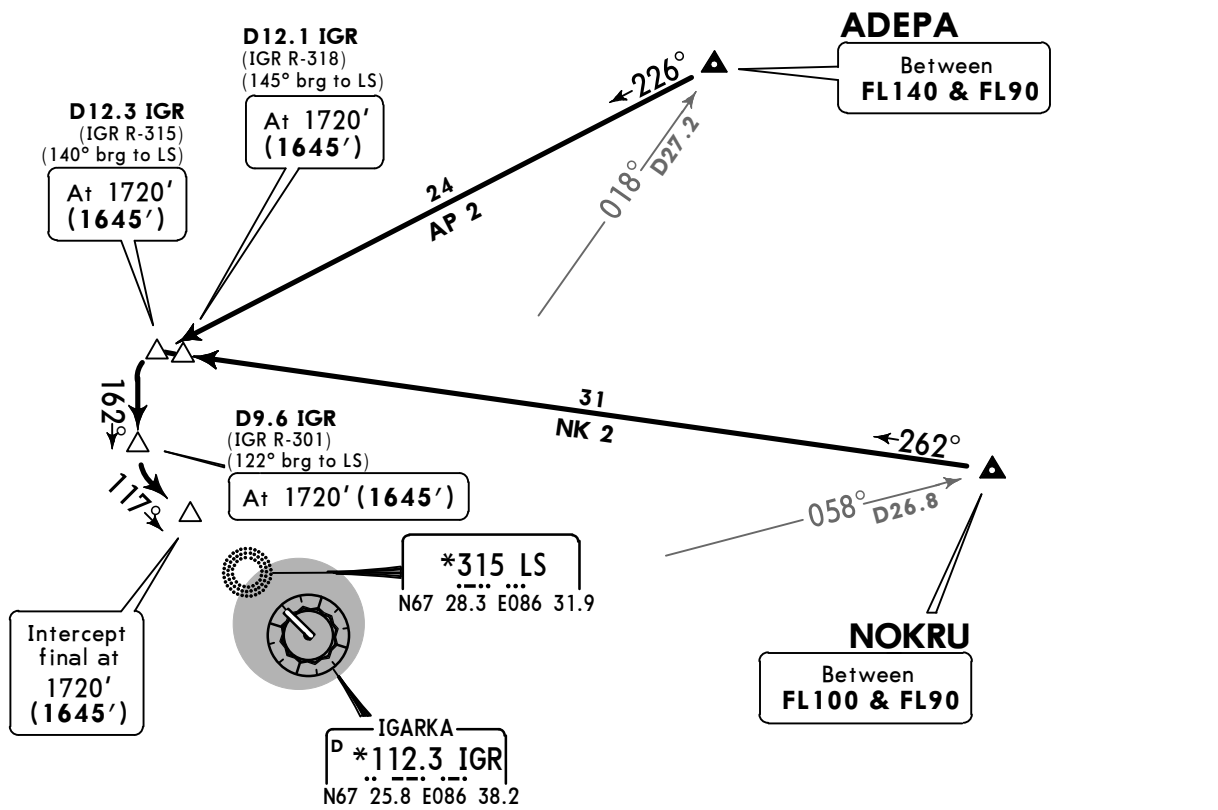
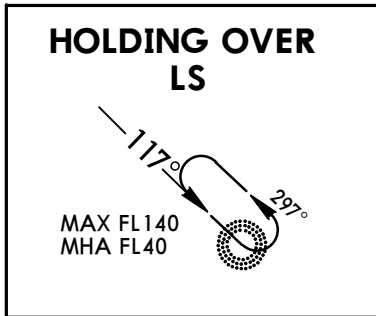
Apt Elev
82'

Alt Set: MM (hPa on request) QNH on request (QFE)
Trans level: FL40 Trans alt: 2060' (1985')



AP 2, NK 2
RWY 12 ARRIVALS
BY ATC

FOR RUSSIAN USERS ONLY



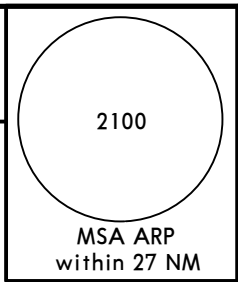
ALT/HEIGHT CONVERSION	
QNH	(QFE)
2060'	(1985' - 600m)
1720'	(1645' - 500m)

UOII/IAA
IGARKA

JEPPESEN
25 JAN 19 **10-2C** **Eff 31 Jan**

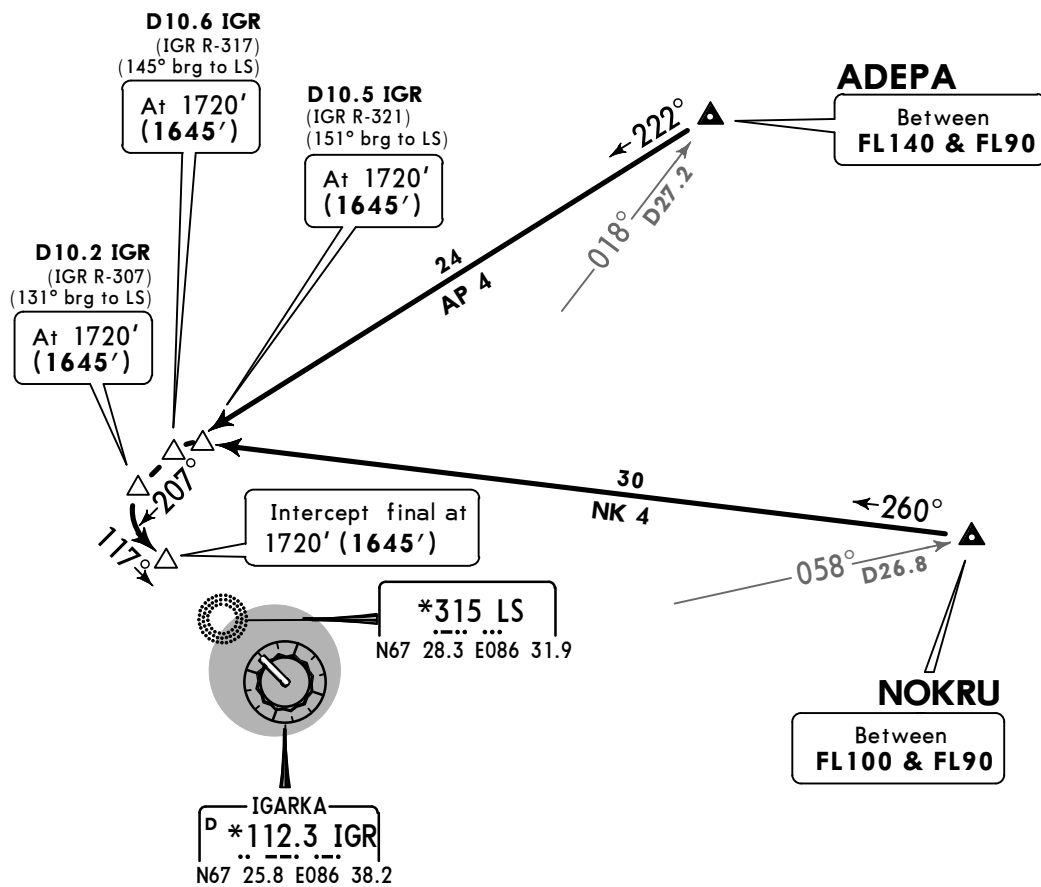
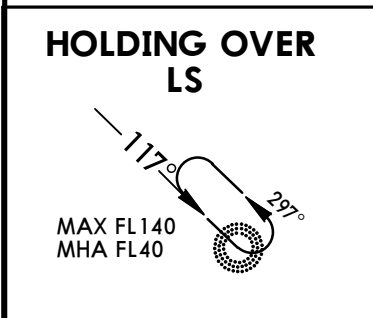
IGARKA, RUSSIA
STAR

Apt Elev 82'
Alt Set: MM (hPa on request) QNH on request (QFE)
Trans level: FL40 Trans alt: 2060' (1985')



AP 4, NK 4
RWY 12 ARRIVALS
BY ATC

FOR RUSSIAN USERS ONLY



ALT/HEIGHT CONVERSION	
QNH	(QFE)
2060'	(1985' - 600m)
1720'	(1645' - 500m)

CHANGES: Procedure note withdrawn.

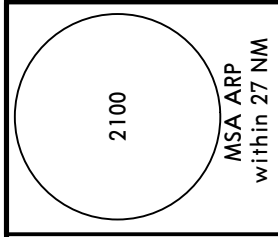
UOII/IAA
IGARKA

JEPPESSEN
25 JAN 19 **10-2D** **Eff 31 Jan**

IGARKA, RUSSIA

STAR

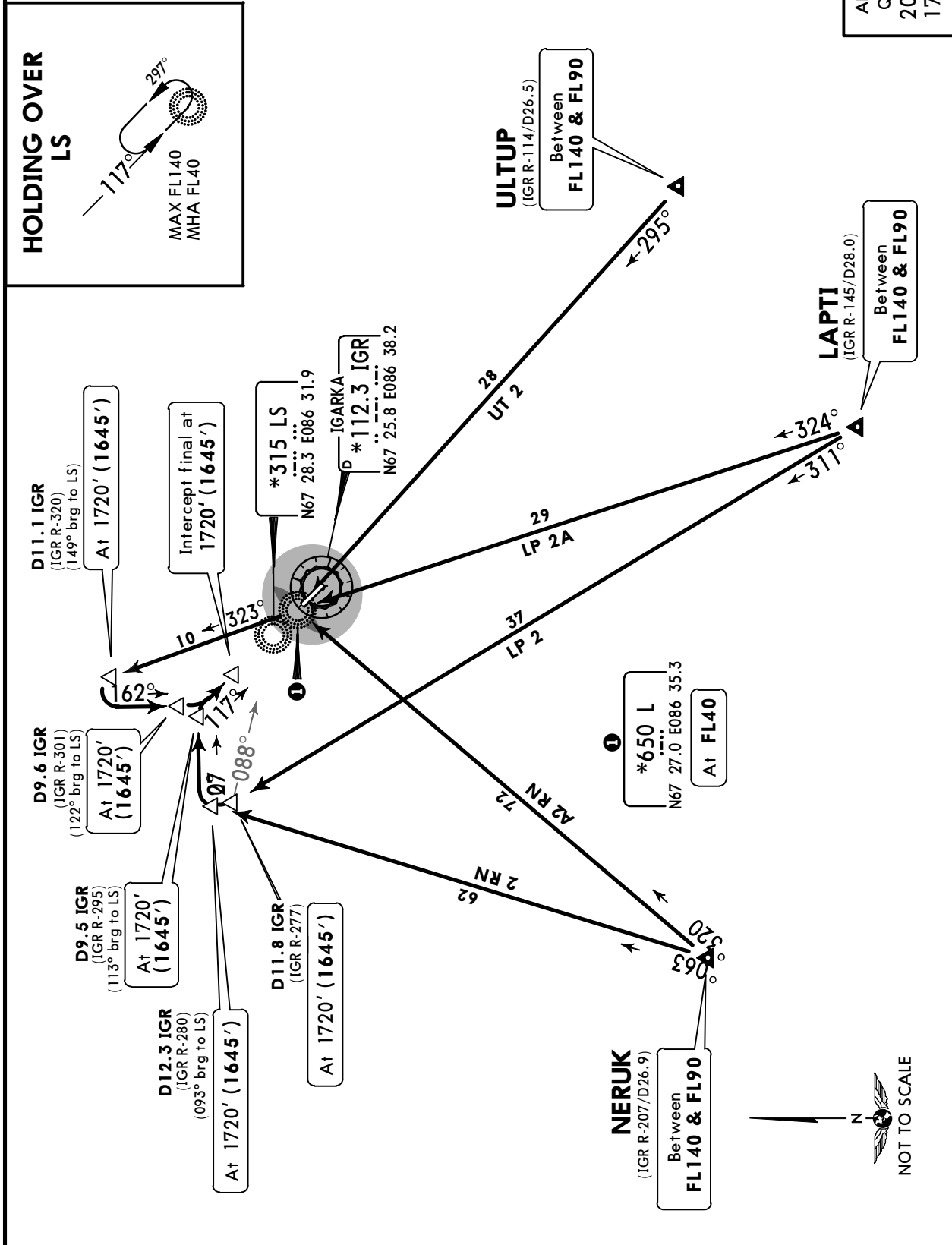
Apt Elev 82' Alt Set: MM (hPa on request) QNH on request (QFE)
Trans level: FL40 Trans alt: 2060' (1985')



LP 2, LP 2A
NR 2, NR 2A, UT 2
RWY 12 ARRIVALS

FOR RUSSIAN USERS ONLY

ALT/HEIGHT CONVERSION	
QNH	(QFE)
2060'	(1985' - 600m)
1720'	(1645' - 500m)



CHANGES: Procedure note withdrawn.

© JEPPESSEN, 2013, 2019. ALL RIGHTS RESERVED.

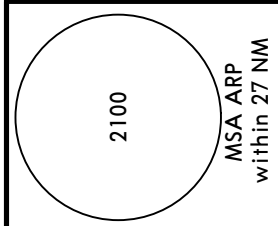
UOII/IAA
IGARKA

JEPPESSEN
25 JAN 19 10-2E Eff 31 Jan

IGARKA, RUSSIA

STAR

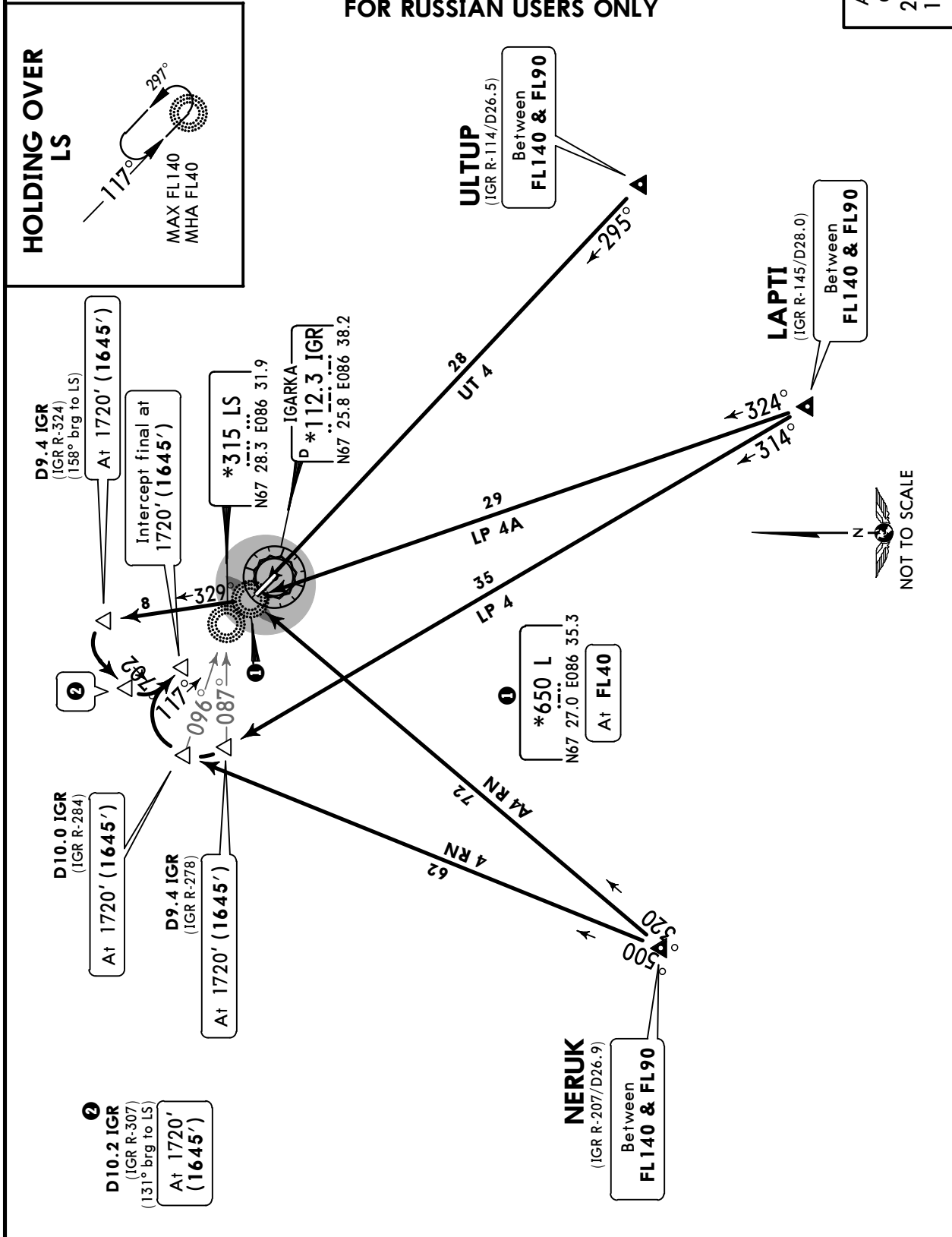
Apt Elev 82' Alt Set: MM (hPa on request) QNH on request (QFE)
Trans level: FL40 Trans alt: 2060' (1985')



LP 4A, NR 4A, UT 4
LP 4, NR 4
BY ATC
RWY 12 ARRIVALS

ALT/HEIGHT CONVERSION	
QNH	(QFE)
2060'	(1985' - 600m)
1720'	(1645' - 500m)

FOR RUSSIAN USERS ONLY



CHANGES: Procedure note withdrawn.

UOII/IAA
IGARKA

JEPPESEN
25 JAN 19 **10-2F** **Eff 31 Jan**

IGARKA, RUSSIA
STAR

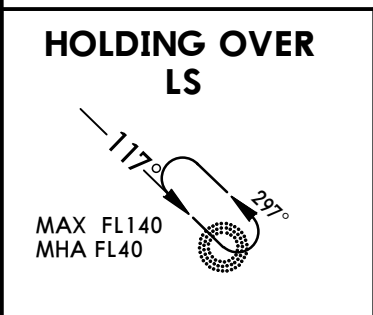
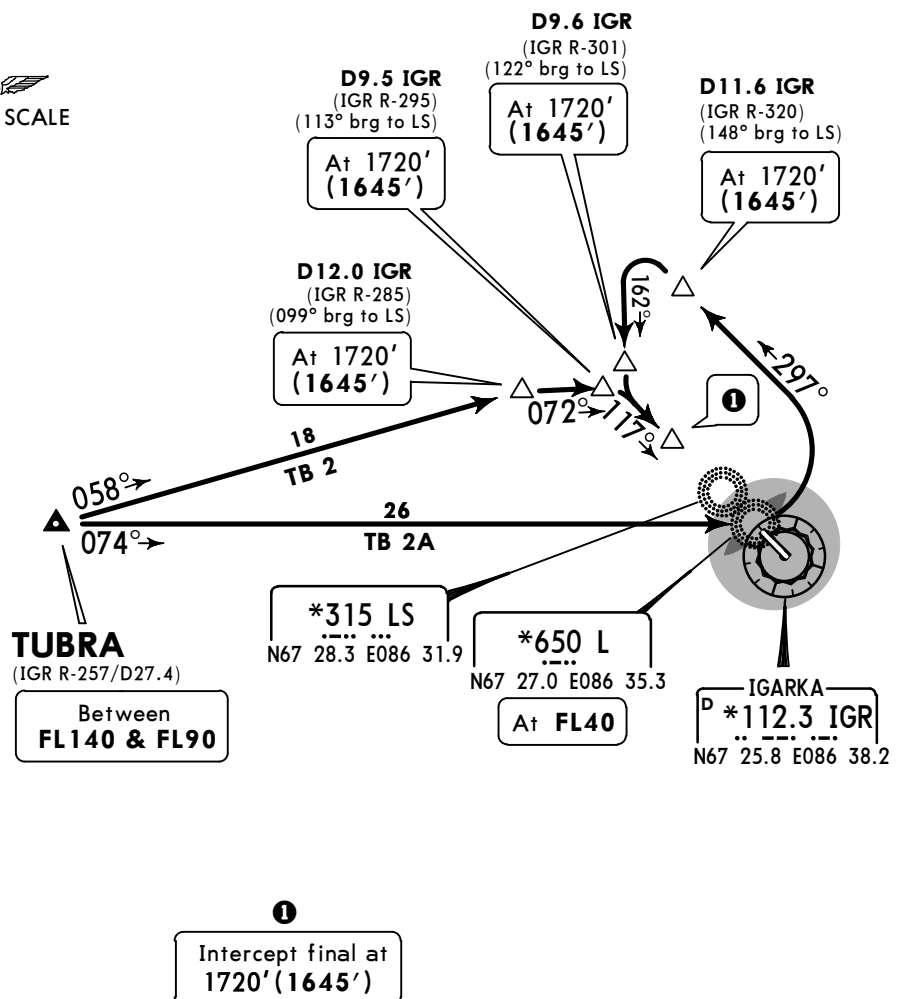
Apt Elev
82'

Alt Set: MM (hPa on request) QNH on request (QFE)
Trans level: FL40 Trans alt: 2060' (1985')

2100
MSA ARP
within 27 NM

TB 2, TB 2A
RWY 12 ARRIVALS

FOR RUSSIAN USERS ONLY



ALT/HEIGHT CONVERSION

QNH	(QFE)
2060'	(1985' - 600m)
1720'	(1645' - 500m)

CHANGES: Procedure note withdrawn.

UOII/IAA
IGARKA

JEPPESEN
25 JAN 19 **10-2G** **Eff 31 Jan**

IGARKA, RUSSIA
STAR

Apt Elev
82'

Alt Set: MM (hPa on request) QNH on request (QFE)
Trans level: FL40 Trans alt: 2060' (1985')

2100

MSA ARP
within 27 NM

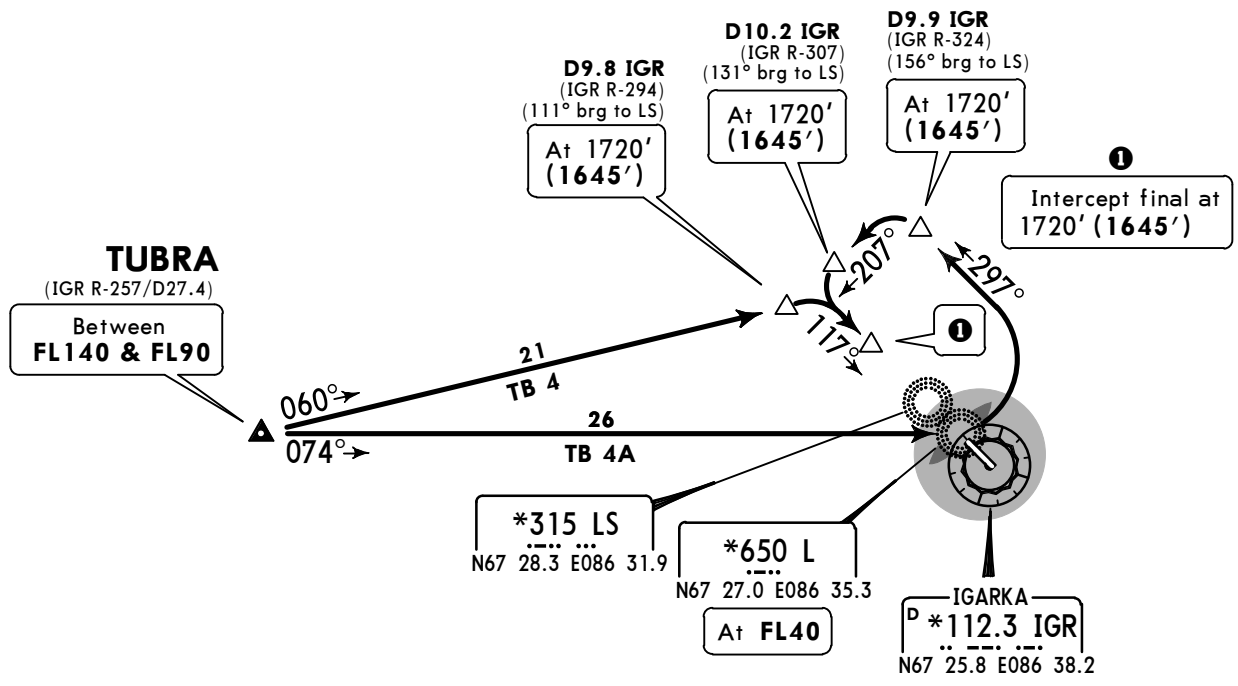
TB 4A
TB 4
BY ATC
RWY 12 ARRIVALS

FOR RUSSIAN USERS ONLY



HOLDING OVER LS

MAX FL 140
MHA FL 40



ALT/HEIGHT CONVERSION	
QNH	(QFE)
2060'	(1985' - 600m)
1720'	(1645' - 500m)

CHANGES: Procedure note withdrawn.

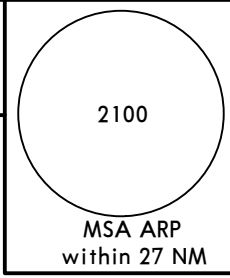
UOII/IAA
IGARKA

JEPPESEN
28 DEC 18 **10-2H** **Eff 3 Jan**

IGARKA, RUSSIA
STAR

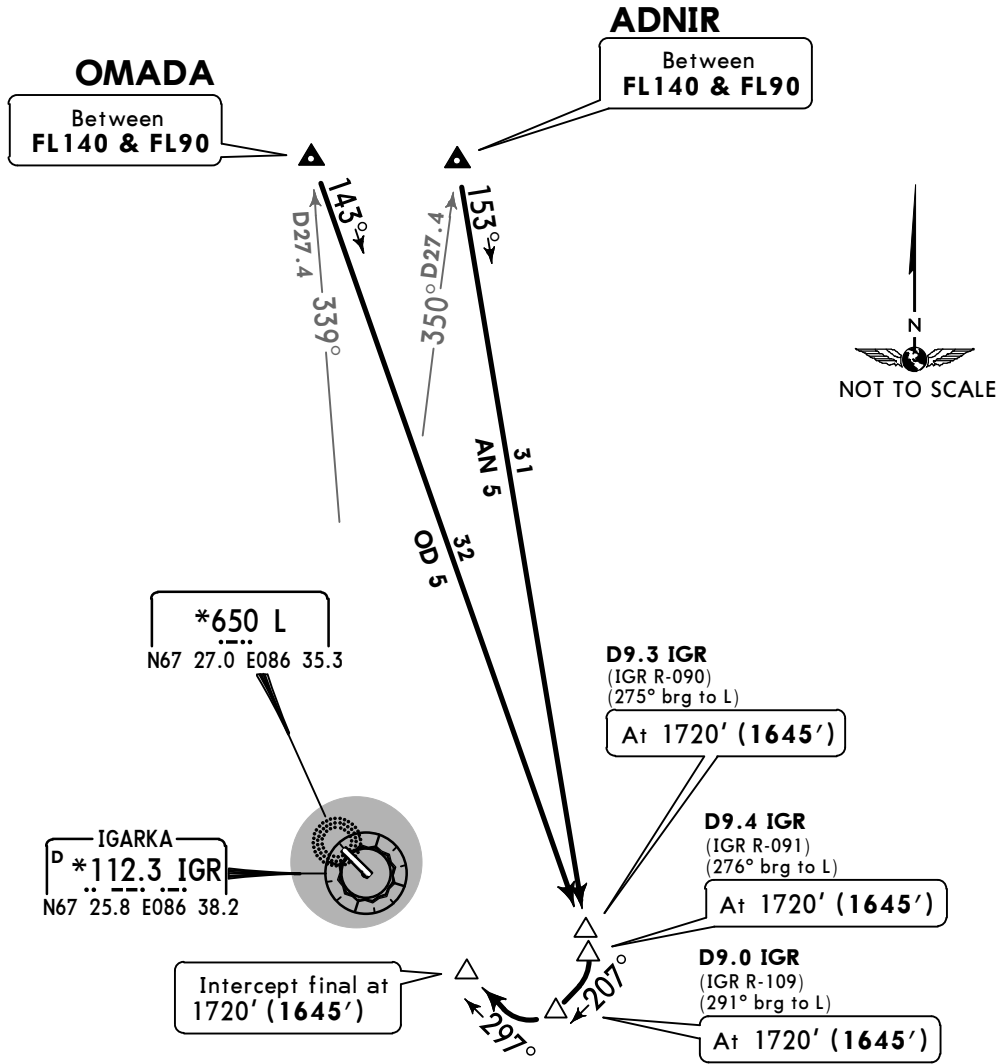
Apt Elev
82'

Alt Set: MM (hPa on request) QNH on request (QFE)
Trans level: FL40 Trans alt: 2060' (1985')



AN 5, OD 5
RWY 30 ARRIVALS

FOR RUSSIAN USERS ONLY



ALT/HEIGHT CONVERSION	
QNH	(QFE)
2060'	(1985' - 600m)
1720'	(1645' - 500m)

CHANGES: ADNIR bearing; Data for ACFT with max 160 KT withdrawn.

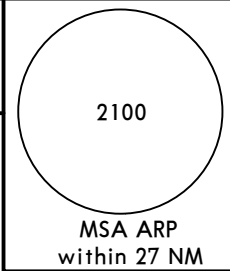
UOII/IAA
IGARKA

JEPPESEN
28 DEC 18 **(10-2J)** **Eff 3 Jan**

IGARKA, RUSSIA
STAR

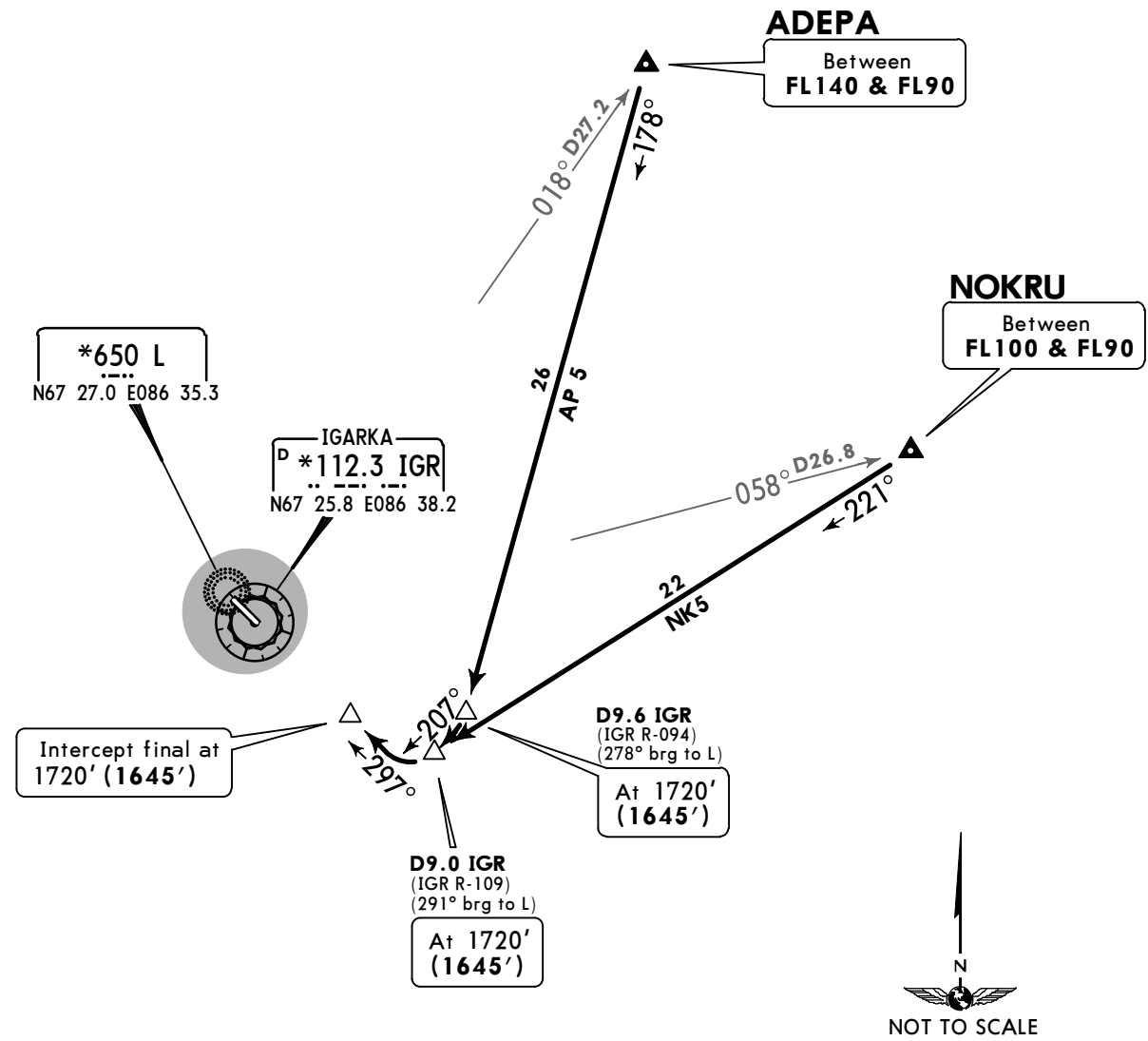
Apt Elev
82'

Alt Set: MM (hPa on request) QNH on request (QFE)
Trans level: FL40 Trans alt: 2060' (1985')



AP 5, NK 5
RWY 30 ARRIVALS
BY ATC

FOR RUSSIAN USERS ONLY



ALT/HEIGHT CONVERSION	
QNH	(QFE)
2060'	(1985' - 600m)
1720'	(1645' - 500m)

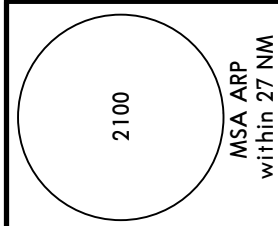
UOII/IAA
IGARKA

JEPPESSEN
28 DEC 18 **10-2K** Eff 3 Jan

IGARKA, RUSSIA

STAR

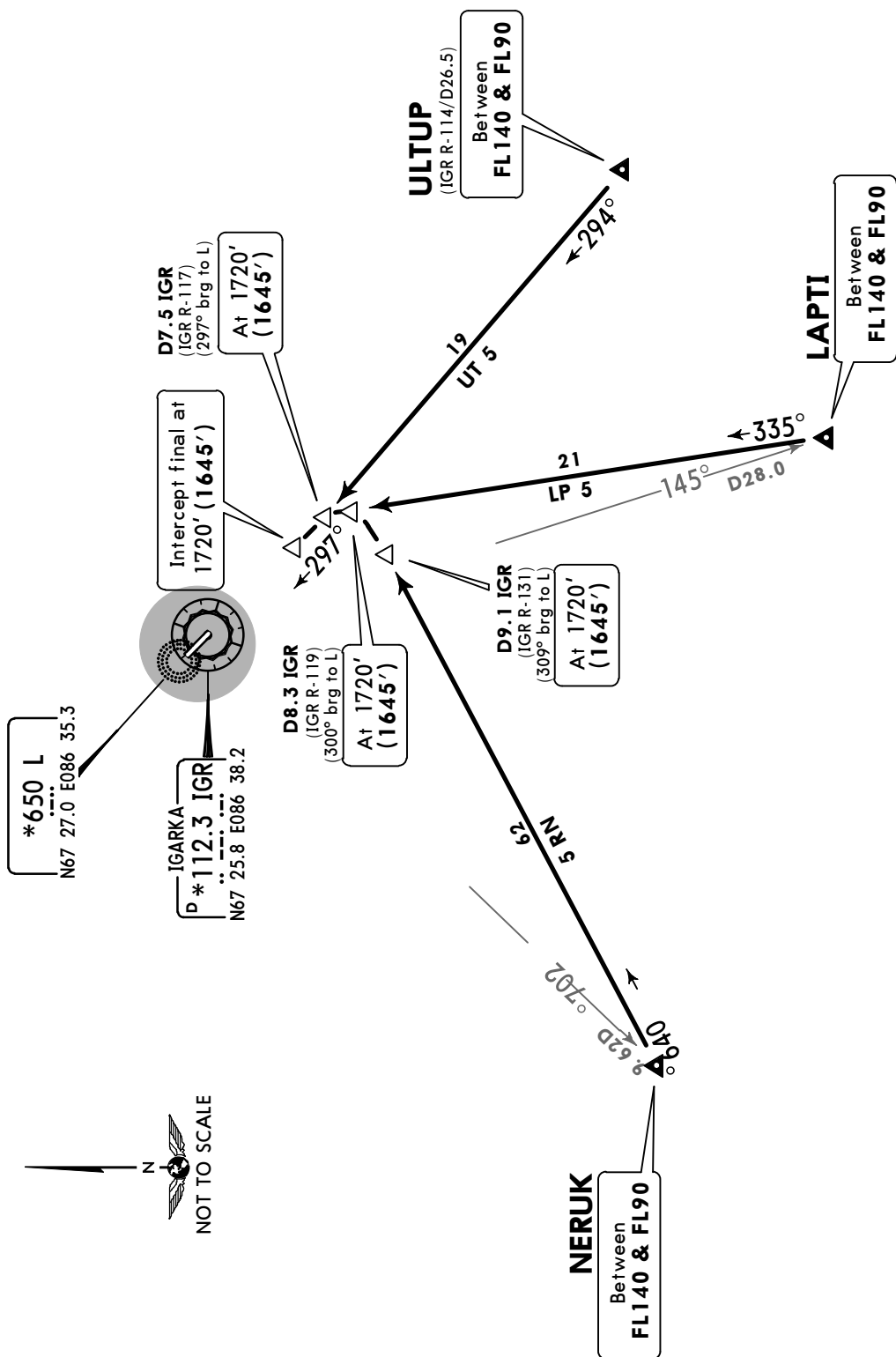
Apt Elev 82' Alt Set: MM (hPa on request) QNH on request (QFE)
Trans level: FL40 Trans alt: 2060' (1985')



LP 5, NR 5, UT 5
RWY 30 ARRIVALS

FOR RUSSIAN USERS ONLY

ALT/HEIGHT CONVERSION	
QNH	(QFE)
2060'	(1985' - 600m)
1720'	(1645' - 500m)



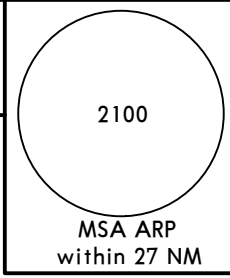
UOII/IAA
IGARKA

JEPPESEN
28 DEC 18 **10-2L** **Eff 3 Jan**

IGARKA, RUSSIA
STAR

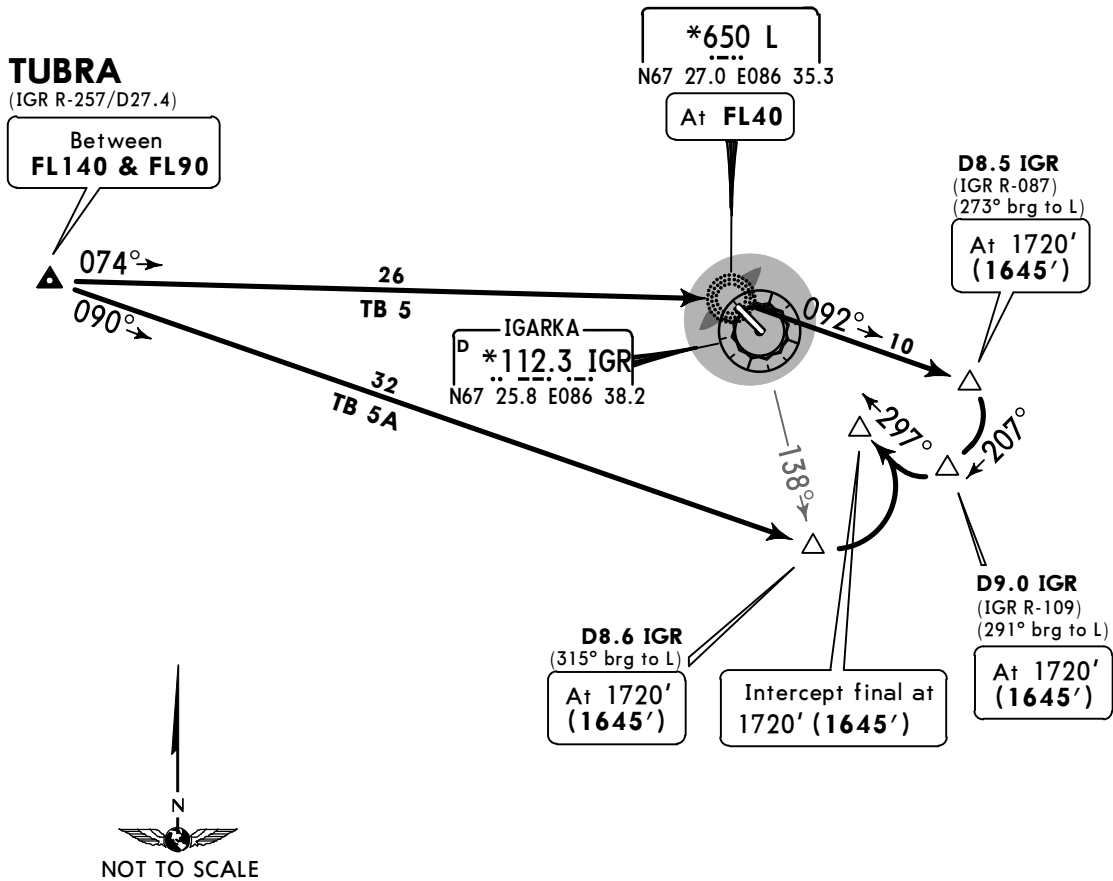
Apt Elev
82'

Alt Set: MM (hPa on request) QNH on request (QFE)
Trans level: FL40 Trans alt: 2060' (1985')



TB 5, TB 5A
RWY 30 ARRIVALS

FOR RUSSIAN USERS ONLY



ALT/HEIGHT CONVERSION	
QNH	(QFE)
2060'	(1985' - 600m)
1720'	(1645' - 500m)

UOII/IAA
IGARKA

JEPPESEN
25 MAR 16 **10-3** Eff 31 Mar

IGARKA, RUSSIA
SID

Apt Elev **82'**
QNH on request (QFE)
Trans level: FL40 Trans alt: 2060' (1985')

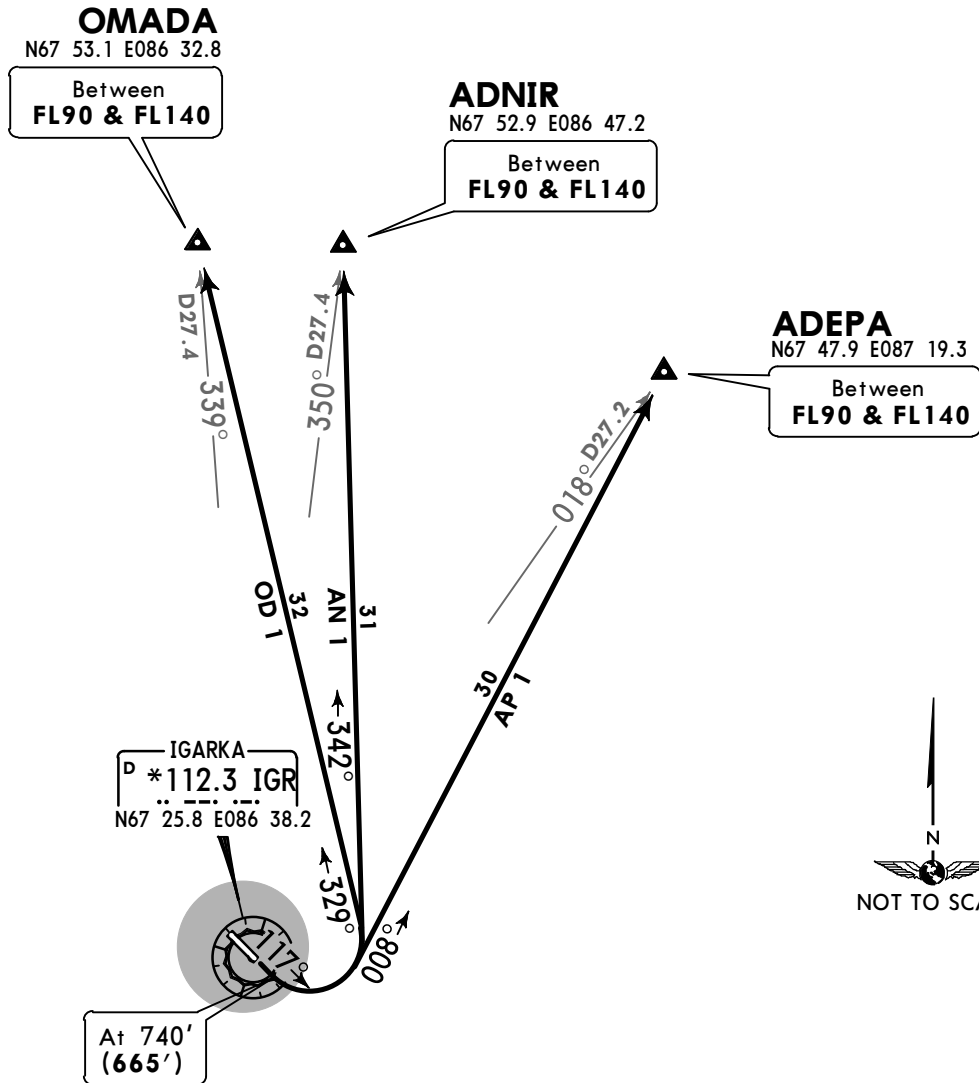
2100'
MSA ARP
within 27 NM

AN 1, OD 1

AP 1
BY ATC

RWY 12

FOR RUSSIAN USERS ONLY



These SIDs require minimum climb gradients of
AN 1, OD 1: 4.3% up to ADNIR & OMADA.
AP 1: 4.7% up to ADEPA.

ALT/HEIGHT CONVERSION	
QNH	(QFE)
740'	(665' - 200m)
2060'	(1985' - 600m)

Gnd speed-KT	75	100	150	200	250	300
4.7% V/V (fpm)	357	476	714	952	1190	1428
4.3% V/V (fpm)	327	435	653	871	1089	1306

UOII/IAA
IGARKA

JEPPESEN
25 MAR 16 **(10-3A)** **Eff 31 Mar**

IGARKA, RUSSIA

SID

Apt Elev **82'** QNH on request (QFE)
Trans level: FL40 Trans alt: 2060' (1985')

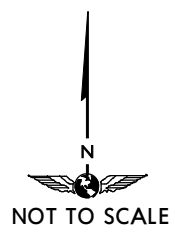
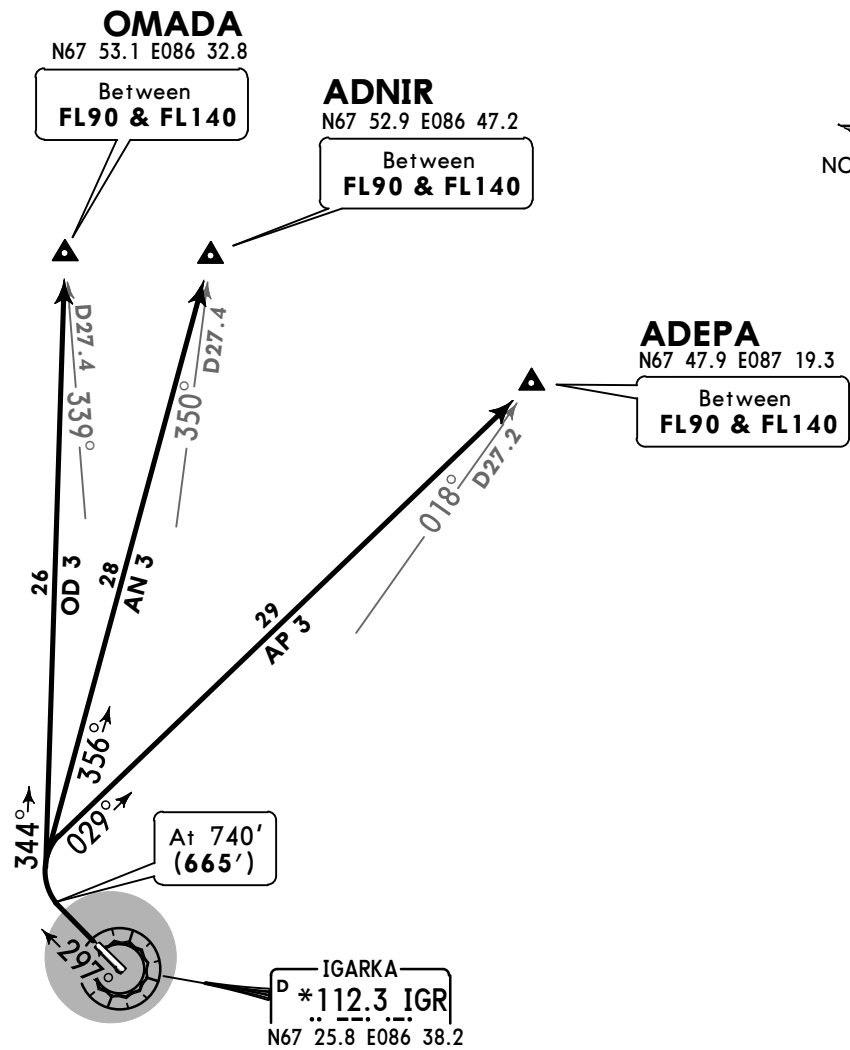
2100'
MSA ARP
within 27 NM

AN 3, OD 3

AP 3
BY ATC

RWY 30

FOR RUSSIAN USERS ONLY



These SIDs require minimum climb gradients of
AP 3: 5.0% up to ADEPA.
AN 3: 5.4% up to ADNIR.
OD 3: 5.5% up to OMADA.

Gnd speed-KT	75	100	150	200	250	300
5.5% V/V (fpm)	418	557	835	1114	1392	1671
5.4% V/V (fpm)	410	547	820	1094	1367	1641
5.0% V/V (fpm)	380	506	760	1013	1266	1519

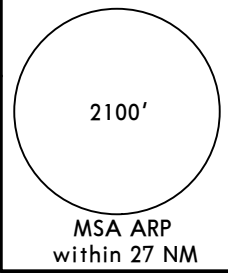
ALT/HEIGHT CONVERSION	
QNH	(QFE)
740'	(665' - 200m)
2060'	(1985' - 600m)

UOII/IAA
IGARKA

JEPPESEN
25 MAR 16 **(10-3B)** **Eff 31 Mar**

IGARKA, RUSSIA
SID

Apt Elev **82'** QNH on request (QFE)
Trans level: FL40 Trans alt: 2060' (1985')

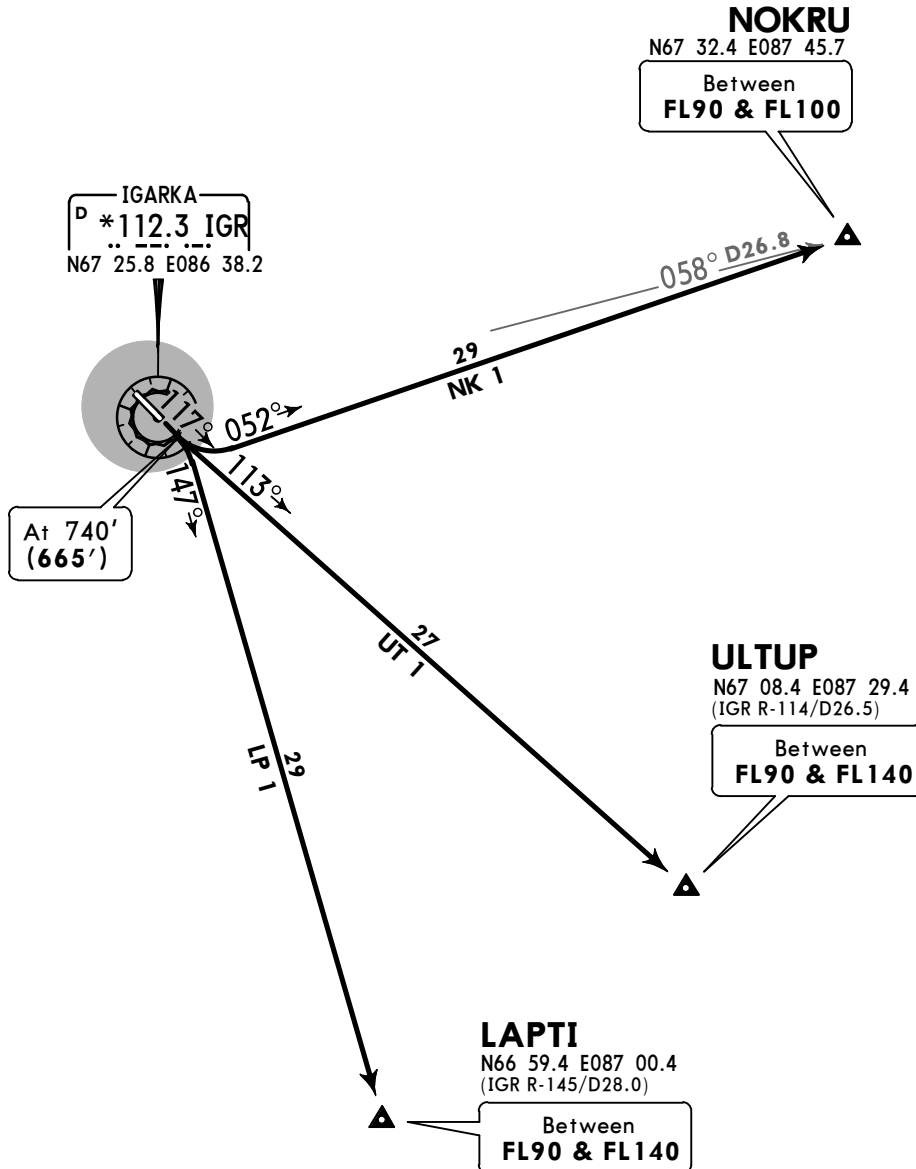


LP 1, UT 1

NK 1
BY ATC

RWY 12

FOR RUSSIAN USERS ONLY



These SIDs require minimum climb gradients of

- NK 1:** 5.1% up to NOKRU.
- LP 1:** 5.4% up to LAPTI.
- UT 1:** 5.6% up to ULTUP.

Gnd speed-KT	75	100	150	200	250	300
5.6% V/V (fpm)	425	567	851	1134	1418	1701
5.4% V/V (fpm)	410	547	820	1094	1367	1641
5.1% V/V (fpm)	387	516	775	1033	1291	1549

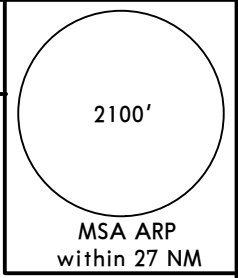
ALT/HEIGHT CONVERSION	
QNH	(QFE)
740'	(665' - 200m)
2060'	(1985' - 600m)

UOII/IAA
IGARKA

JEPPESEN
25 MAR 16 **(10-3C)** Eff 31 Mar

IGARKA, RUSSIA
SID

Apt Elev **82'** QNH on request (QFE)
Trans level: FL40 Trans alt: 2060' (1985')

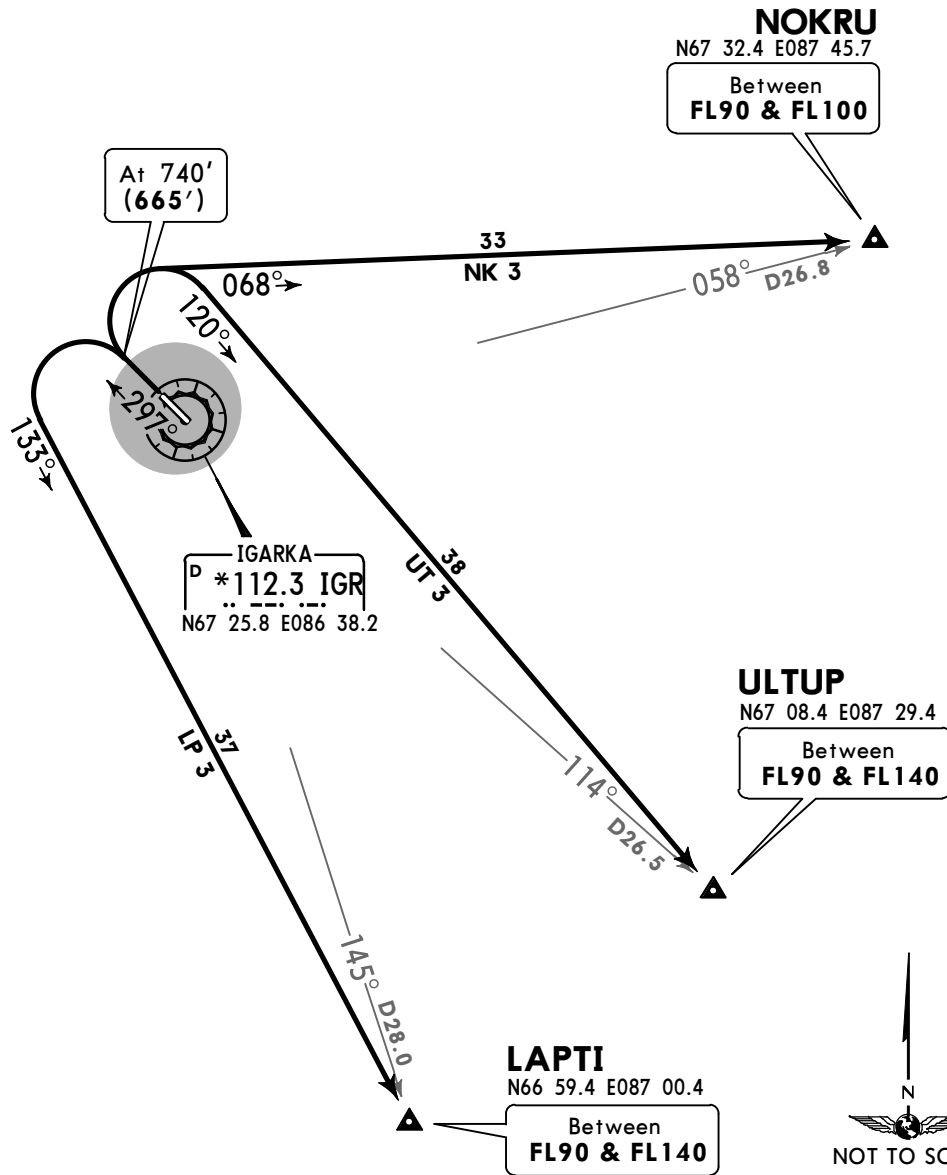


LP 3, UT 3

NK 3
BY ATC

RWY 30

FOR RUSSIAN USERS ONLY



These SIDs require minimum climb gradients of

- UT 3:** 3.9% up to ULTUP.
- LP 3:** 4.1% up to LAPTI.
- NK 3:** 4.8% up to NOKRU.

Gnd speed-KT	75	100	150	200	250	300
4.8% V/V (fpm)	365	486	729	972	1215	1458
4.1% V/V (fpm)	311	415	623	830	1038	1246
3.9% V/V (fpm)	296	395	592	790	987	1185

ALT/HEIGHT CONVERSION	
QNH	(QFE)
740'	(665' - 200m)
2060'	(1985' - 600m)

UOII/IAA
IGARKA

JEPPESEN
28 DEC 18 **(10-3D)** **Eff 3 Jan**

IGARKA, RUSSIA

SID

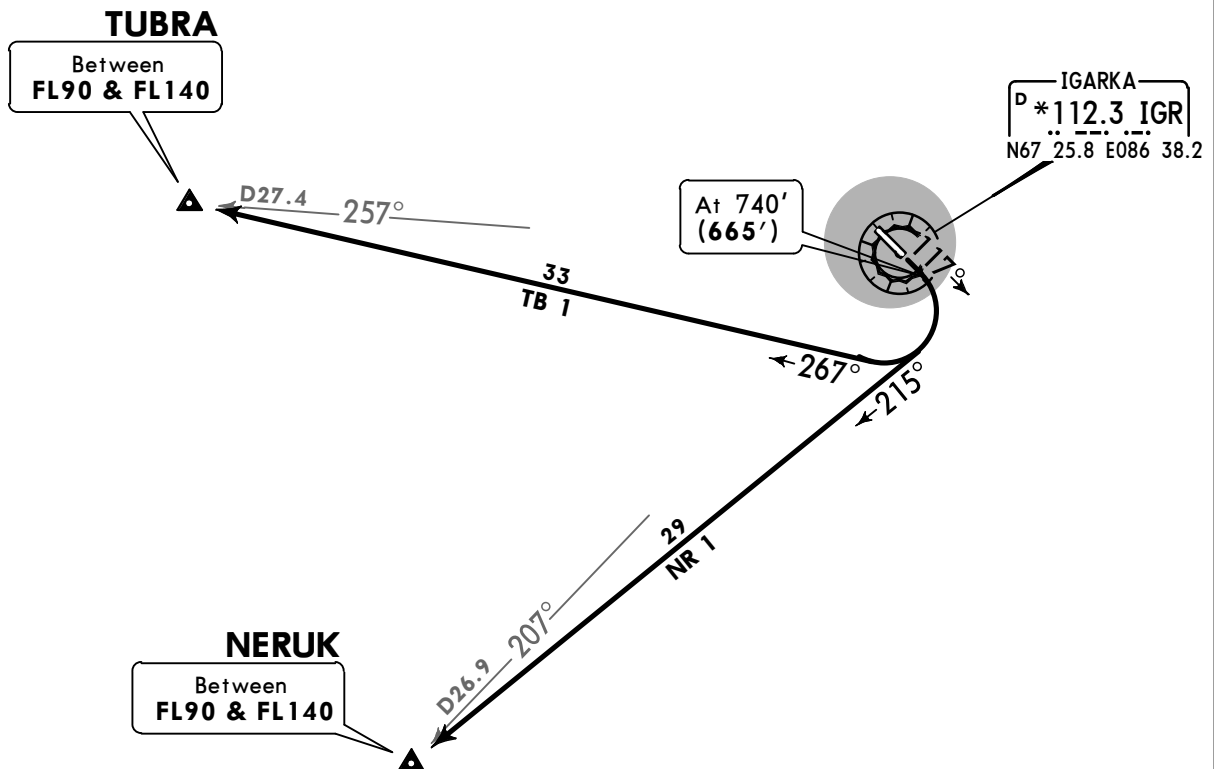
Apt Elev
82'

QNH on request (QFE)
Trans level: FL40 Trans alt: 2060' (1985')

2100

MSA ARP
within 27 NM

NR 1, TB 1
RWY 12 DEPARTURES
FOR RUSSIAN USERS ONLY



These SIDs require minimum climb gradients of

- TB 1:** 4.3% up to TUBRA.
- NR 1:** 4.7% up to NERUK.

ALT/HEIGHT CONVERSION	
QNH	(QFE)
740'	(665' - 200m)
2060'	(1985' - 600m)

Gnd speed-KT	75	100	150	200	250	300
4.3% V/V (fpm)	327	435	653	871	1089	1306
4.7% V/V (fpm)	357	476	714	952	1190	1428

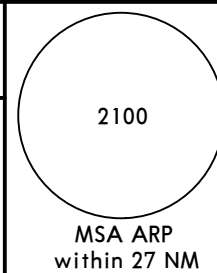
UOII/IAA
IGARKA

JEPPESEN
28 DEC 18 (10-3E) Eff 3 Jan

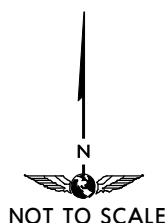
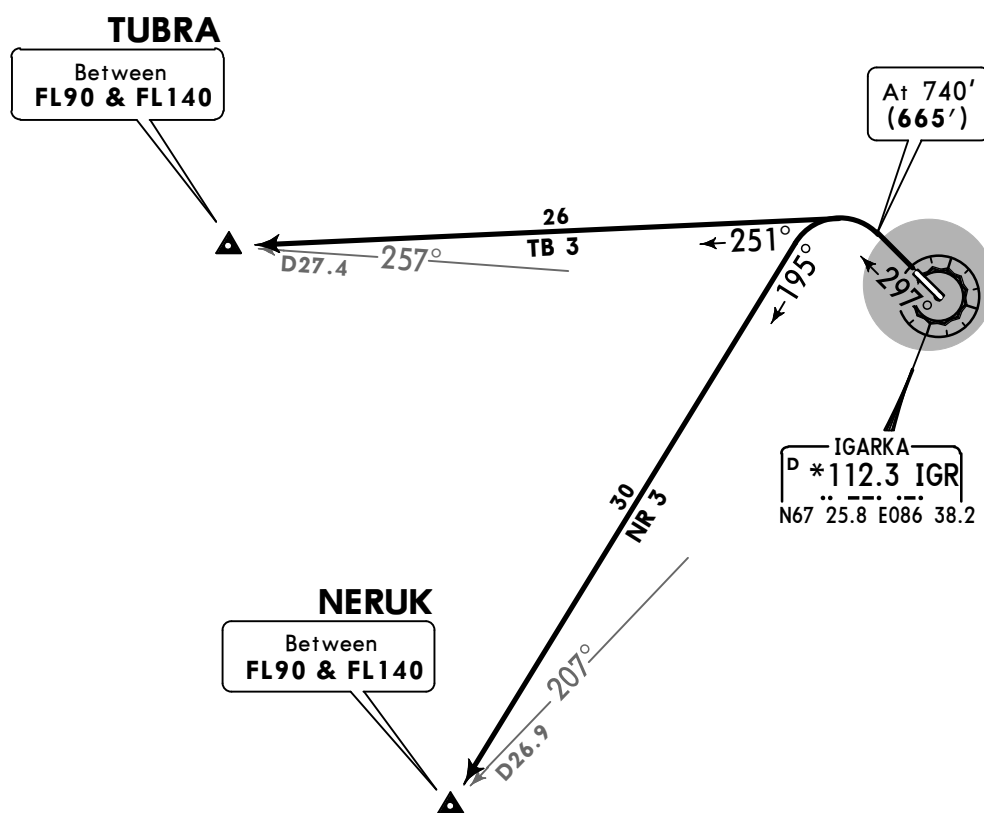
IGARKA, RUSSIA

SID

Apt Elev 82' QNH on request (QFE)
Trans level: FL40 Trans alt: 2060' (1985')



NR 3, TB 3
RWY 30 DEPARTURES
FOR RUSSIAN USERS ONLY



These SIDs require minimum climb gradients of
NR 3: 4.8% up to NERUK.
TB 3: 5.5% up to TUBRA.

ALT/HEIGHT CONVERSION	
QNH	(QFE)
740'	(665' - 200m)
2060'	(1985' - 600m)

Gnd speed-KT	75	100	150	200	250	300
4.8% V/V (fpm)	365	486	729	972	1215	1458
5.5% V/V (fpm)	418	557	835	1114	1392	1671

UOII/IAA

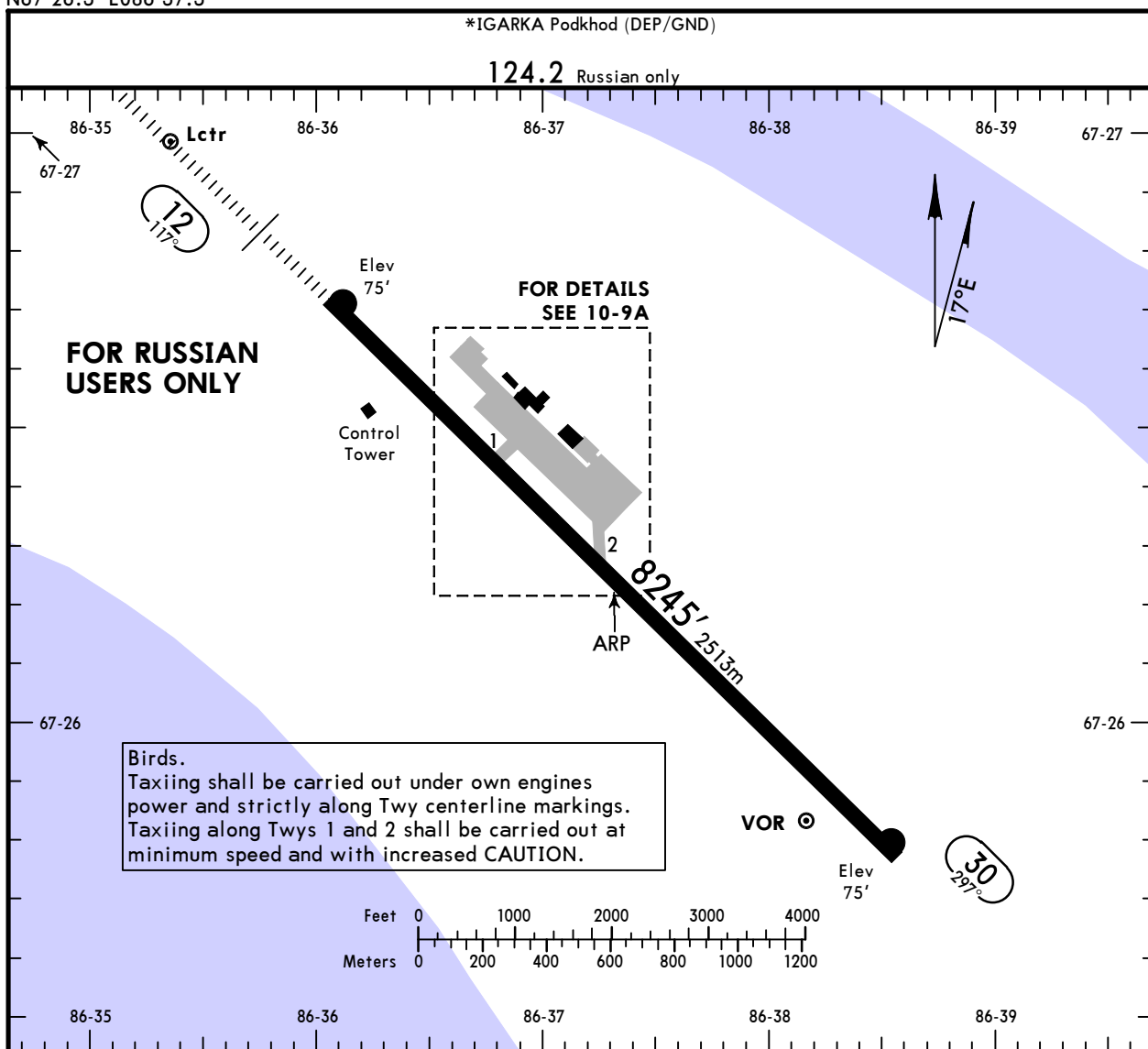
Apt Elev 82'
N67 26.3 E086 37.3

JEPPesen

21 DEC 18 (10-9) Eff 3 Jan

IGARKA, RUSSIA

IGARKA



ADDITIONAL RUNWAY INFORMATION

RWY	USABLE LENGTHS			TAKE-OFF	WIDTH	
						Threshold
12 ① 30	HIRL (60m)	HIALS	PAPI-L (angle 3.0°)	7394'	2254m	151' 46m
	HIRL (60m)					

① Elevated Rwy lights 1.5'/0.45m.

TAKE-OFF

AIR CARRIER (JAA)

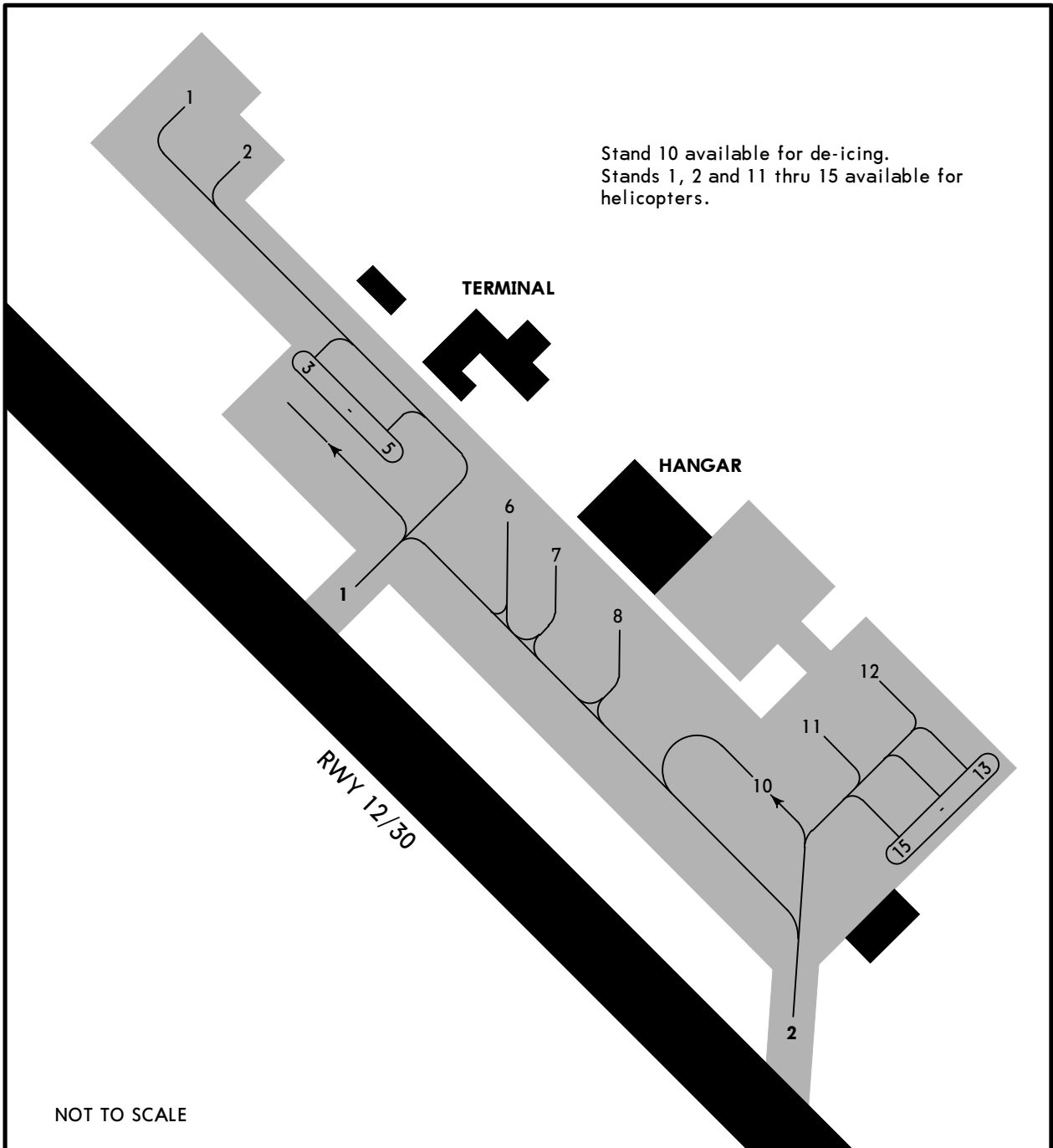
All Rwy's

	LVP must be in force RCLM (DAY only) or RL	RCLM (DAY only) or RL
A		
B	250m	400m
C		
D	300m	

UOII/IAA

JEPPESEN
21 DEC 18 (10-9A) Eff 3 Jan

IGARKA, RUSSIA
IGARKA



INS COORDINATES	
STAND No.	COORDINATES
1	N67 26.6 E086 36.7
2	N67 26.6 E086 36.8
3	N67 26.5 E086 36.8
4, 5	N67 26.5 E086 36.9
6	N67 26.5 E086 37.0
7, 8	N67 26.4 E086 37.1
10	N67 26.4 E086 37.2
11	N67 26.4 E086 37.3
12 thru 15	N67 26.4 E086 37.4

UOII/IAA

Standard
IGARKA, RUSSIA
IGARKA

STRAIGHT-IN RWY		A	B	C	D
12	ILS	276' (200')	276' (200')	276' (200')	277' (201')
	ALS out	① R550m R1200m	① R550m R1200m	① R550m R1200m	① R550m R1200m
	LOC	NOT AUTH	NOT AUTH	NOT AUTH	NOT AUTH
	② ③ 2 NDB	460' (384')	460' (384')	460' (384')	460' (384')
	ALS out	R1100m R1500m	R1100m R1500m	R1100m R1800m	R1100m R1800m
	④ 2 NDB	460' (384')	460' (384')	460' (384')	460' (384')
	ALS out	R1300m R2000m	R1300m R2000m	R1500m R2200m	R1500m R2200m
	② ③ LS NDB	580' (504')	580' (504')	580' (504')	580' (504')
	ALS out	R1500m R1500m	R1500m R1500m	R1600m R2400m	R1600m R2400m
	④ LS NDB	560' (484')	560' (484')	560' (484')	560' (484')
ALS out	R1700m R2500m	R1700m R2500m	R1900m R2700m	R1900m R2700m	
② ③ L Lctr	580' (504')	580' (504')	580' (504')	580' (504')	
ALS out	R1500m R1500m	R1500m R1500m	R1600m R2400m	R1600m R2400m	
④ L Lctr	630' (554')	630' (554')	630' (554')	630' (554')	
ALS out	R2000m R2700m	R2000m R2700m	R2200m R2900m	R2200m R2900m	
30	② ③ L Lctr	500' (475')	500' (475')	500' (475')	500' (475')
	ALS out	R1500m R2200m	R1500m R2200m	R2200m R2200m	R2200m R2200m
	④ L Lctr	600' (525')	600' (525')	600' (525')	600' (525')
	ALS out	R2600m R2600m	R2600m R2600m	R2800m R2800m	R2800m R2800m

- ① W/o HUD/AP/FD: RVR 750m.
- ② Continuous Descent Final Approach.
- ③ with FAF.
- ④ w/o FAF.

TAKE-OFF

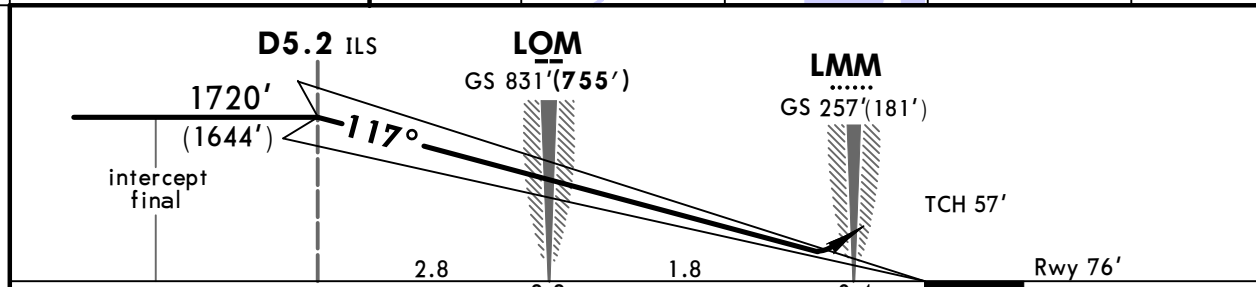
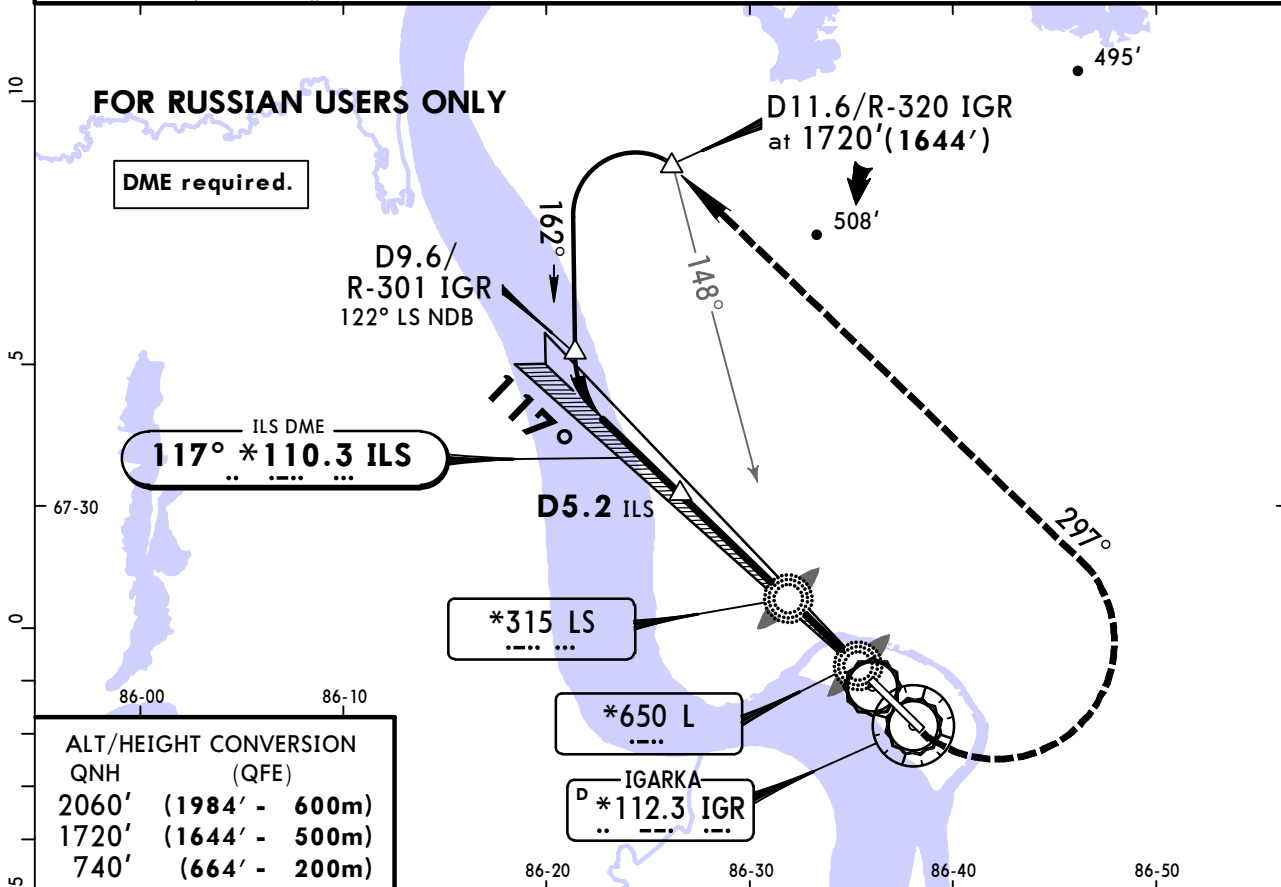
	Low Visibility Take-off		
	Day: RL & RCLM Night: RL	Day: RL or RCLM Night: RL	Adequate vis ref (Day only)
A			
B			
C	R300m	400m	500m
D			

UOII/IAA
IGARKA

JEPPESSEN
21 DEC 18 **(11-1)** Eff 3 Jan

IGARKA, RUSSIA
ILS Rwy 12

*IGARKA Rayon		*IGARKA Podkhod (R/APP)		Ground	
120.45 Russian only		124.2 Russian only		124.2 Russian only	
LOC ILS *110.3	Final Apch Crs 117°	GS LOM 831'(755')	ILS DA(H) Refer to Minimums	Apt Elev 82' Rwy 76'	2100 MSA ARP within 27 NM
MISSED APCH: Climb to 740'(664'), then turn LEFT onto 297° climbing to 1720'(1644'), then according to chart.					
Alt Set: MM (hPa on req)		QNH on req (QFE)		Trans level: FL 40 Trans alt: 2060' (1984')	



Gnd speed-Kts	70	90	100	120	140	160	HIALS PAPI	740' (664')	297° LT	1720' (1644')
GS	3.00°	372	478	531	637	849				

STRAIGHT-IN LANDING RWY 12			LOC (GS out)		
ILS DA(H) ABC: 276'(200') D: 277'(201')					
FULL		ALS out			
A					
B	800m	1200m	NOT AUTHORIZED		
C					
D					

UOII/IAA
IGARKA

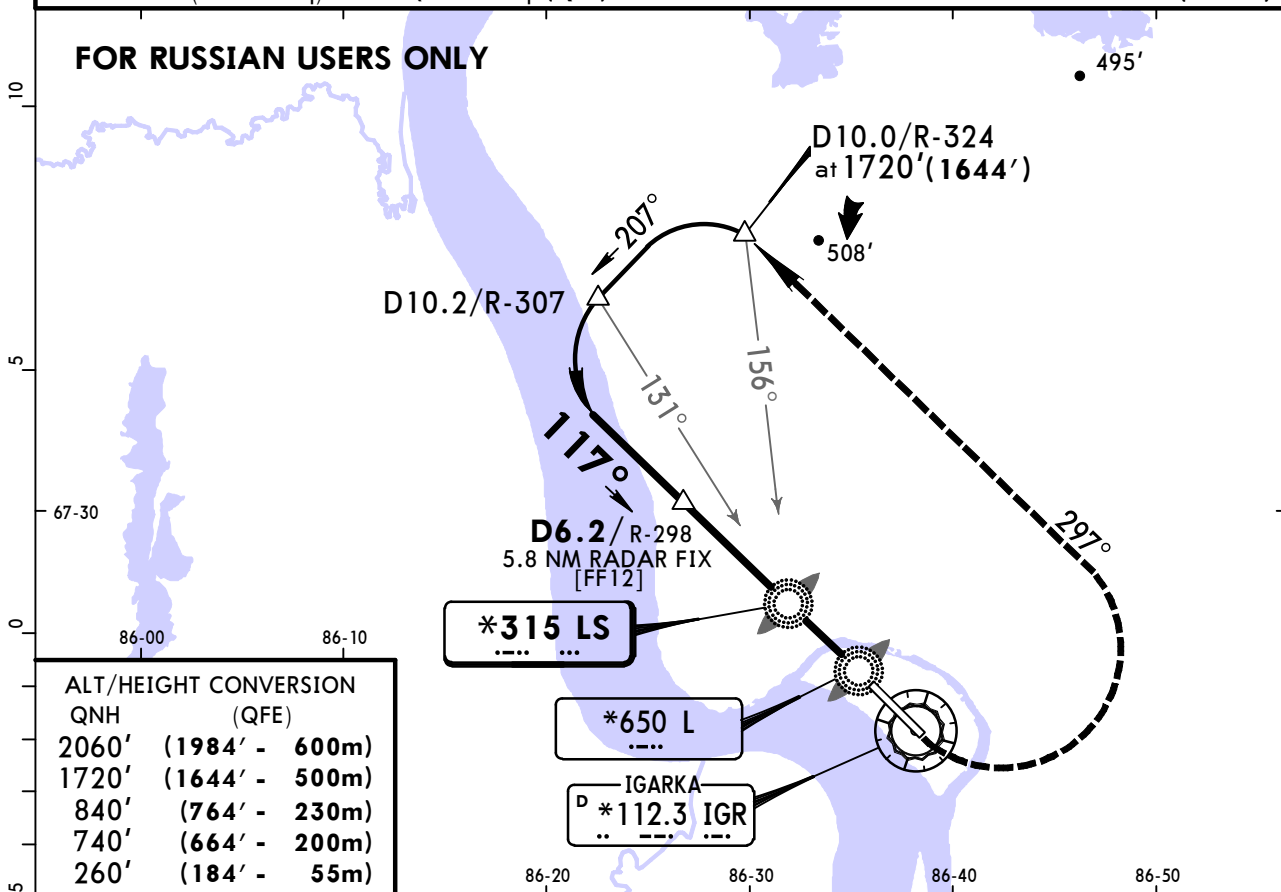


IGARKA, RUSSIA

21 DEC 18 (16-1) Eff 3 Jan 2 NDB or NDB Rwy 12

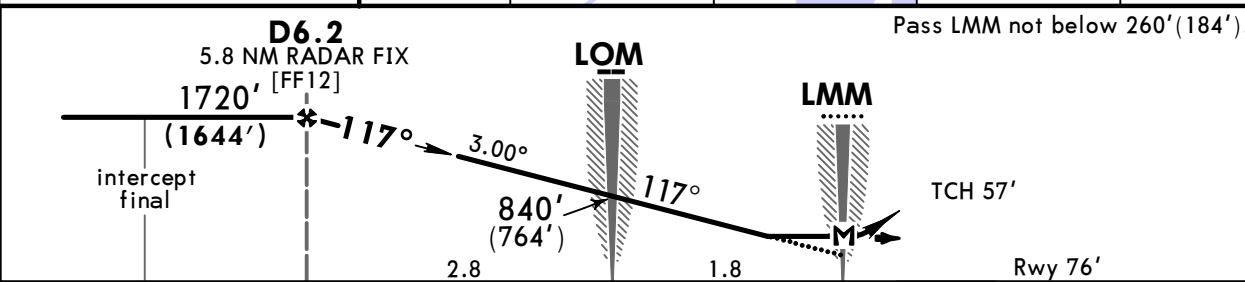
*IGARKA Rayon		*IGARKA Podkhod (R/APP)		Ground	
120.45 Russian only		124.2 Russian only		124.2 Russian only	
NDB LS *315	Final Apch Crs 117°	Minimum Alt D6.2 1720' (1644')	MDA(H) Refer to Minimums	Apt Elev 82' Rwy 76'	2100 MSA ARP within 27 NM
MISSED APCH: Climb to 740' (644'), then turn LEFT onto 297° climbing to 1720' (1644'), then according to chart.					

Alt Set: MM (hPa on req) QNH on req (QFE) Trans level: FL 40 Trans alt: 2060' (1984')



ALT/HEIGHT CONVERSION

QNH	(QFE)
2060' (1984' - 600m)	
1720' (1644' - 500m)	
840' (764' - 230m)	
740' (664' - 200m)	
260' (184' - 55m)	



Gnd speed-Kts	70	90	100	120	140	160	HIALS	740' (664')	297°	1720' (1644')
Descent Angle 3.00°	372	478	531	637	743	849	PAPI	↑	←	↑
2 NDB or Lctr: MAP at LMM										

STRAIGHT-IN LANDING RWY 12

	2 NDB		LS NDB		L Lctr	
	with FAF	w/o FAF	with FAF	w/o FAF	with FAF	w/o FAF
MDA(H)	460' (384')	580' (504')	560' (484')	580' (504')	630' (554')	
ALS out						
A						
B	1200m	1600m	1200m	1600m	1200m	1600m
C		1600m	2400m	2000m	1600m	2400m
D	1600m	2000m	2000m	2400m	2000m	2800m

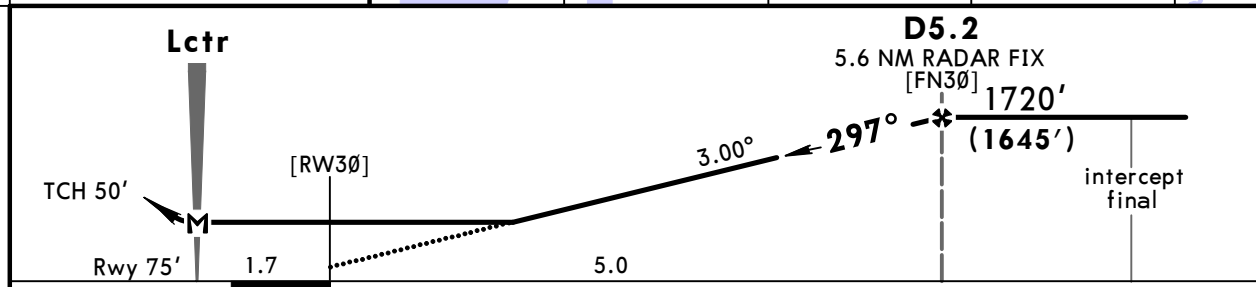
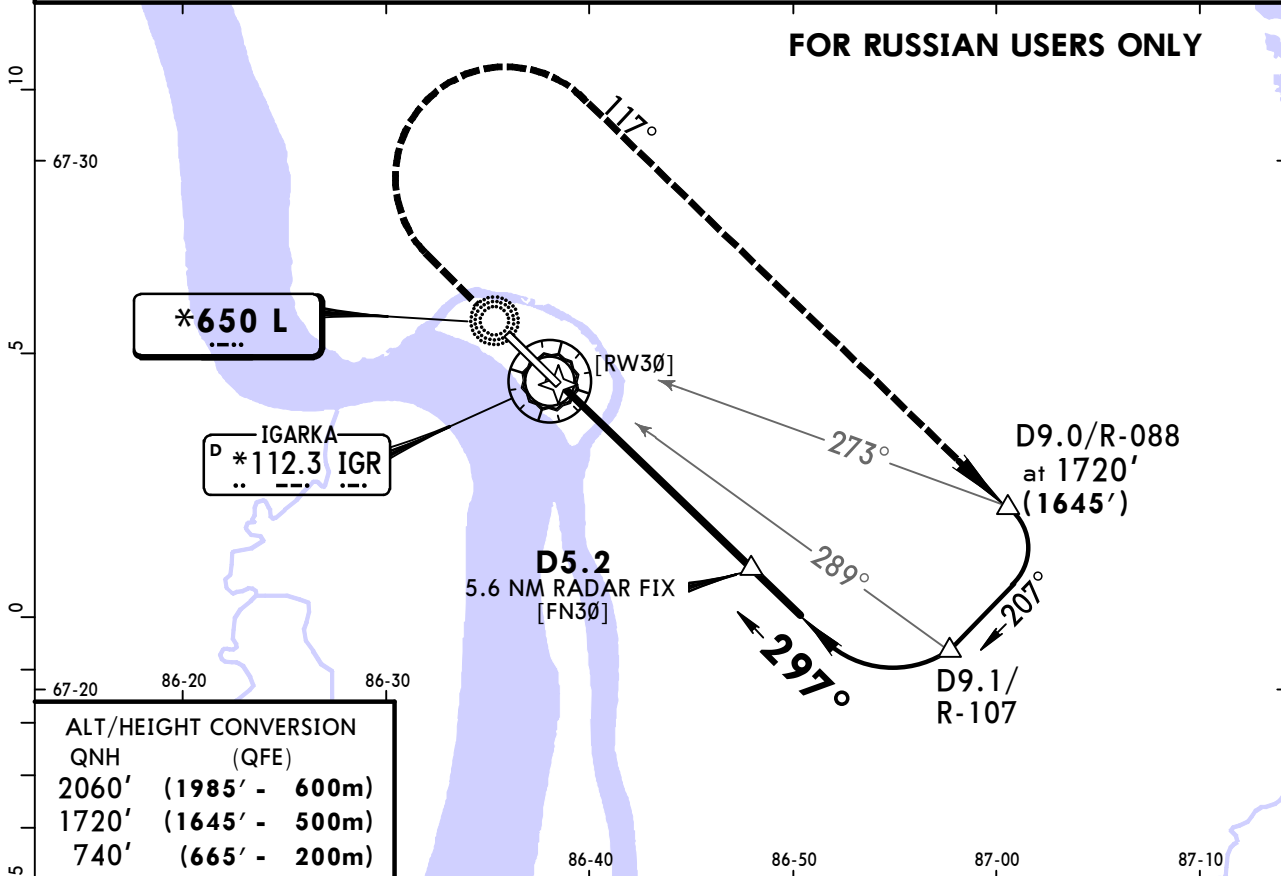
PANS OPS

UOII/IAA
IGARKA

JEPPESEN
21 DEC 18 **(16-2)** Eff 3 Jan

IGARKA, RUSSIA
NDB Rwy 30

*IGARKA Rayon		*IGARKA Podkhod (R/APP)		Ground	
120.45 Russian only		124.2 Russian only		124.2 Russian only	
Lctr L * 650	Final Apch Crs 297°	Minimum Alt D5.2 1720' (1645')	MDA(H) Refer to Minimums	Apt Elev 82' Rwy 75'	2100 MSA ARP within 27 NM
MISSED APCH: Climb to 740' (665'), then turn RIGHT onto 117° climbing to 1720' (1645'), then according to chart.					
Alt Set: MM (hPa on req)		QNH on req (QFE)		Trans level: FL 40	
				Trans alt: 2060' (1985')	



Gnd speed-Kts	70	90	100	120	140	160		740' (665')	117°	1720' (1645')
Descent Angle	3.00°	372	478	531	637	849		↑	RT	↑
MAP at Lctr										

STRAIGHT-IN LANDING RWY 30	
with FAF MDA(H) 550' (475')	w/o FAF MDA(H) 600' (525')
A	1600m
B	1600m
C	2400m
D	2800m

PANS OPS

Chart changes since cycle 08-2019

ADD = added chart, REV = revised chart, DEL = deleted chart.

ACT	PROCEDURE IDENT	INDEX	REV DATE	EFF DATE
IGARKA, (IGARKA - UOII)				

TERMINAL CHART CHANGE NOTICES

No Chart Change Notices for Airport UOII