

List of pages in this Trip Kit

Trip Kit Index
Airport Information For UOHH
Terminal Charts For UOHH
Revision Letter For Cycle 09-2019
Change Notices
Notebook

General Information

Location: KHATANGA RUS
ICAO/IATA: UOHH / HTG
Lat/Long: N71° 58.7', E102° 29.6'
Elevation: 98 ft

Airport Use: Public
Daylight Savings: Not Observed
UTC Conversion: -7:00 = UTC
Magnetic Variation: 5.0° E

Fuel Types: Jet A-1
Customs: No
Airport Type: IFR
Landing Fee: Yes
Control Tower: Yes
Jet Start Unit: No
LLWS Alert: No
Beacon: No

Sunrise: 24 Hour Day
Sunset: Never

Runway Information

Runway: 06
Length x Width: 8871 ft x 158 ft
Surface Type: concrete
TDZ-Elev: 96 ft
Lighting: Edge, ALS

Runway: 24
Length x Width: 8871 ft x 158 ft
Surface Type: concrete
TDZ-Elev: 46 ft
Lighting: Edge, ALS
Displaced Threshold: 650 ft

Communication Information

Khatanga Vyshka Tower: 129.000 Secondary Non-English
Khatanga Vyshka Tower: 118.100 Non-English
Khatanga Zemlya Ramp/Taxi: 119.000 Non-English
AWIS: 126.600 Non-English
Khatanga Transit Operations: 131.700 Non-English

UOHH/HTG
KHATANGA

JEPPESEN
16 JUN 17 **10-2** Eff 22 Jun

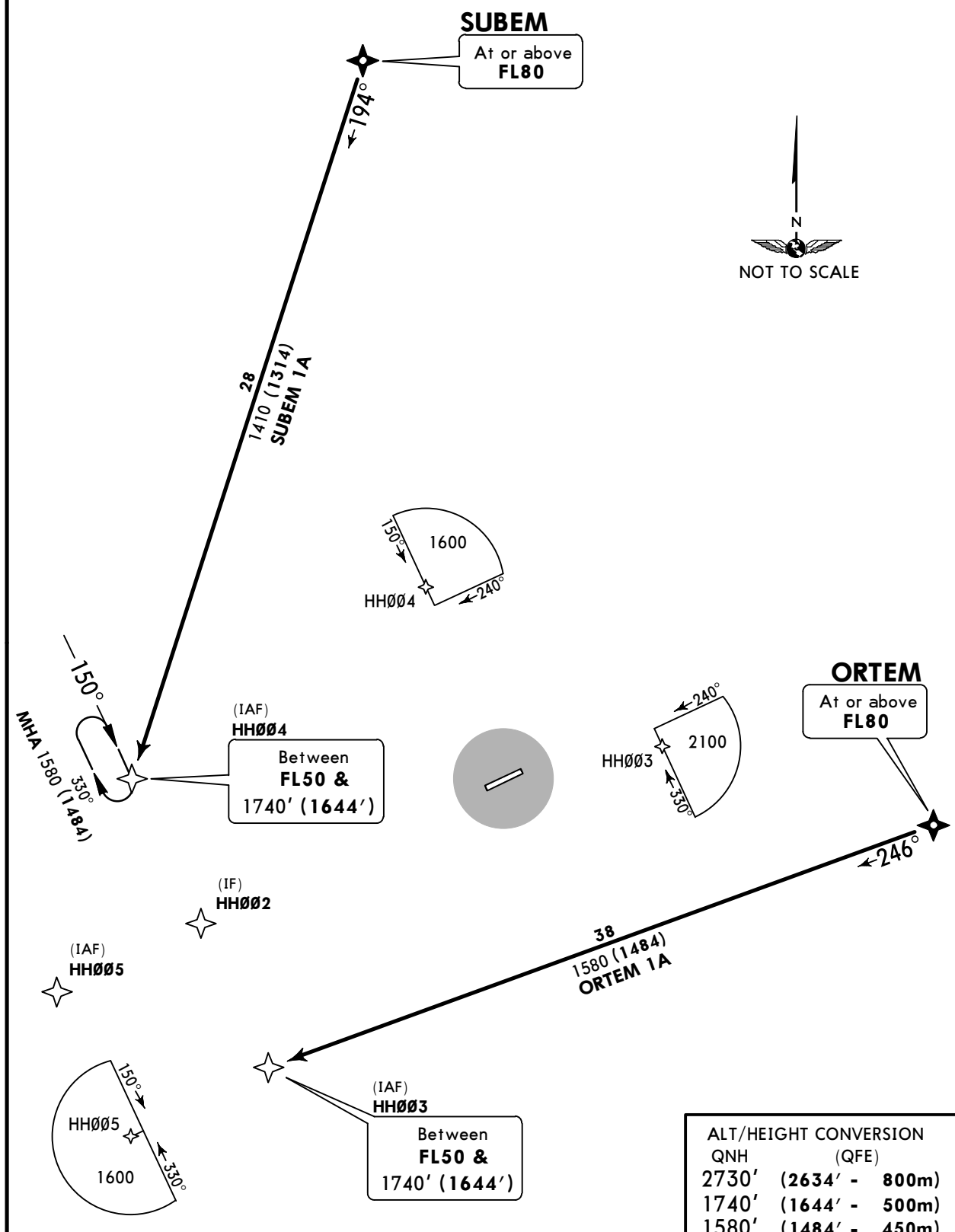
KHATANGA, RUSSIA
RNAV STAR

Apt Elev
98'

Alt Set: MM (hPa on request) QNH on request (QFE)
Trans level: FL40 Trans alt: 2730' (2634')
1. RNAV (GNSS).
2. RNAV 1.

TAA
25 NM
IAF
(RWY 06)

ORTEM 1A [ORTE1A]
SUBEM 1A [SUBE1A]
RWY 06 RNAV ARRIVALS
FOR RUSSIAN USERS ONLY



ALT/HEIGHT CONVERSION	
QNH	(QFE)
2730'	(2634' - 800m)
1740'	(1644' - 500m)
1580'	(1484' - 450m)

CHANGES: New RNAV STARs at this airport.

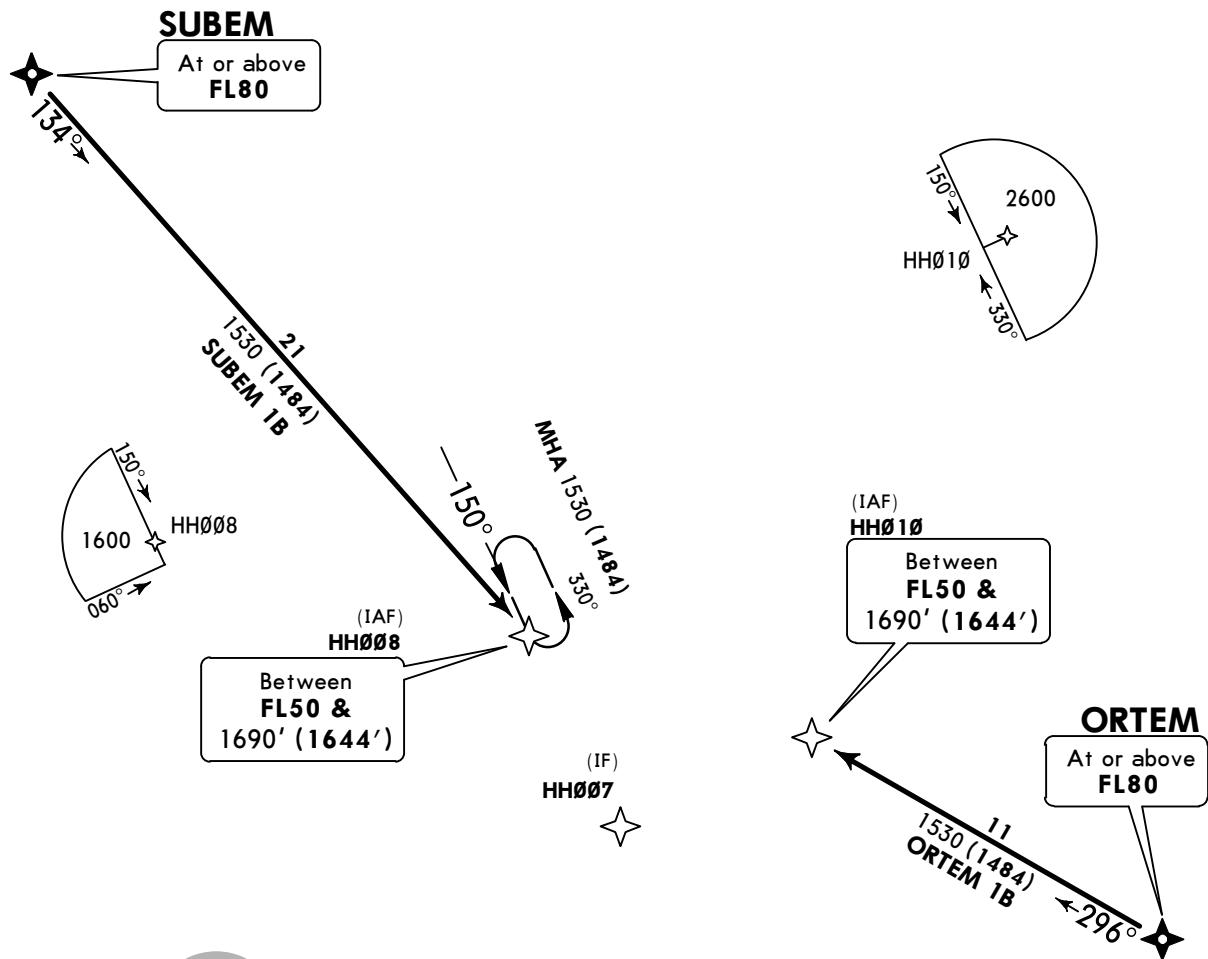
UOHH/HTG
KHATANGA

JEPPESEN
16 JUN 17 **10-2A** Eff 22 Jun

KHATANGA, RUSSIA
RNAV STAR

Apt Elev 98'	Alt Set: MM (hPa on request) QNH on request (QFE) Trans level: FL40 Trans alt: 2730' (2684') 1. RNAV (GNSS). 2. RNAV 1.	TAA 25 NM IAF (RWY 24)
------------------------	--	---------------------------------

ORTEM 1B [ORTE1B]
SUBEM 1B [SUBE1B]
RWY 24 RNAV ARRIVALS
FOR RUSSIAN USERS ONLY



ALT/HEIGHT CONVERSION	
QNH	(QFE)
2730'	(2684' - 800m)
1690'	(1644' - 500m)
1530'	(1484' - 450m)

CHANGES: New RNAV STARs at this airport.

UOHH/HTG
KHATANGA

JEPPESEN
16 JUN 17 **(10-2C)** Eff 22 Jun

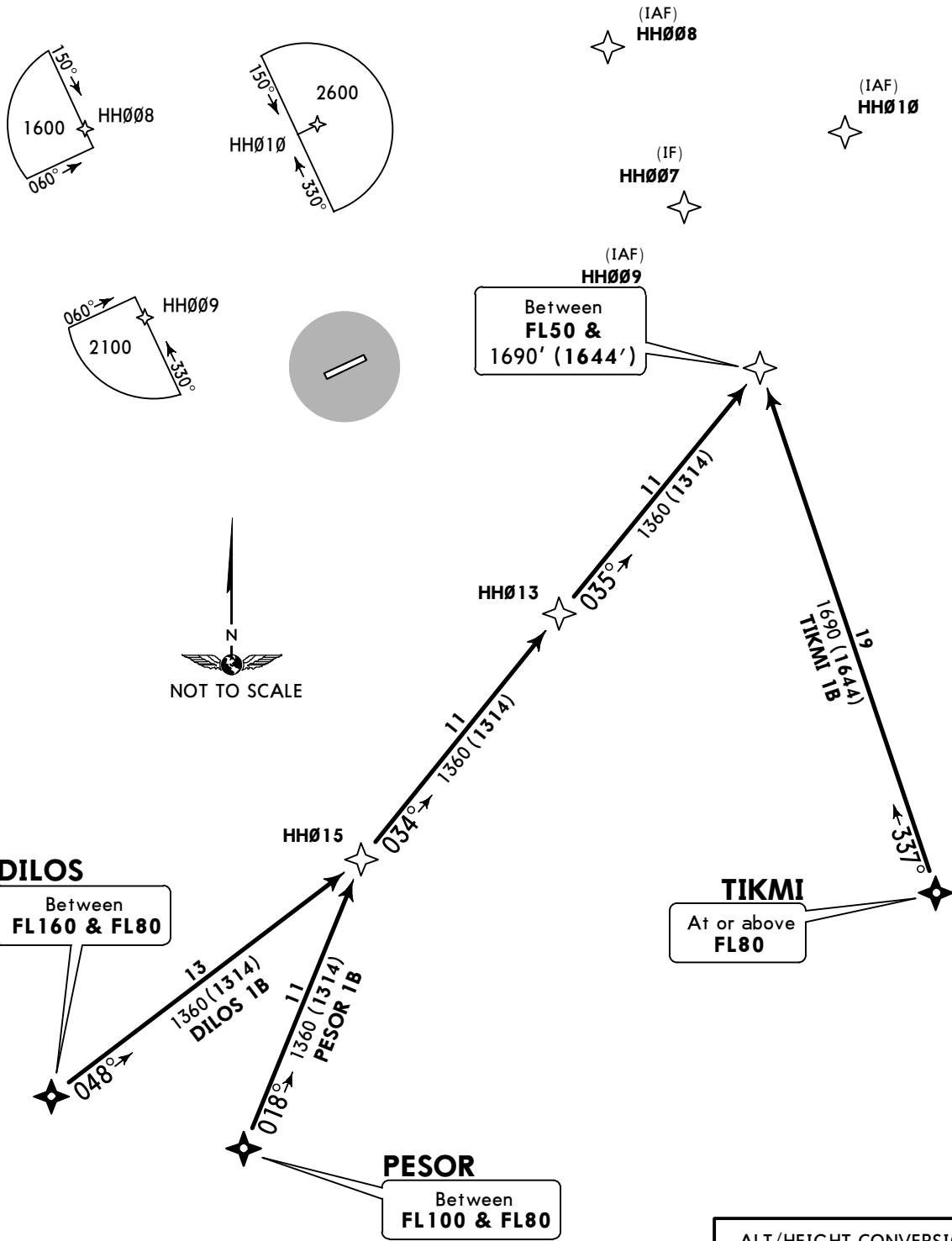
KHATANGA, RUSSIA
RNAV STAR

Apt Elev
98'

Alt Set: MM (hPa on request) QNH on request (QFE)
Trans level: FL40 Trans alt: 2730' (2684')
1. RNAV (GNSS).
2. RNAV 1.

TAA
25 NM
IAF
(RWY 24)

DILOS 1B [DILO1B]
PESOR 1B [PESO1B]
TIKMI 1B [TIKM1B]
RWY 24 RNAV ARRIVALS
FOR RUSSIAN USERS ONLY



ALT/HEIGHT CONVERSION	
QNH	(QFE)
2730'	(2684' - 800m)
1690'	(1644' - 500m)

CHANGES: New RNAV STARs at this airport.

UOHH/HTG
KHATANGA

JEPPESEN
16 JUN 17 **(10-2D)** Eff 22 Jun

KHATANGA, RUSSIA
RNAV STAR

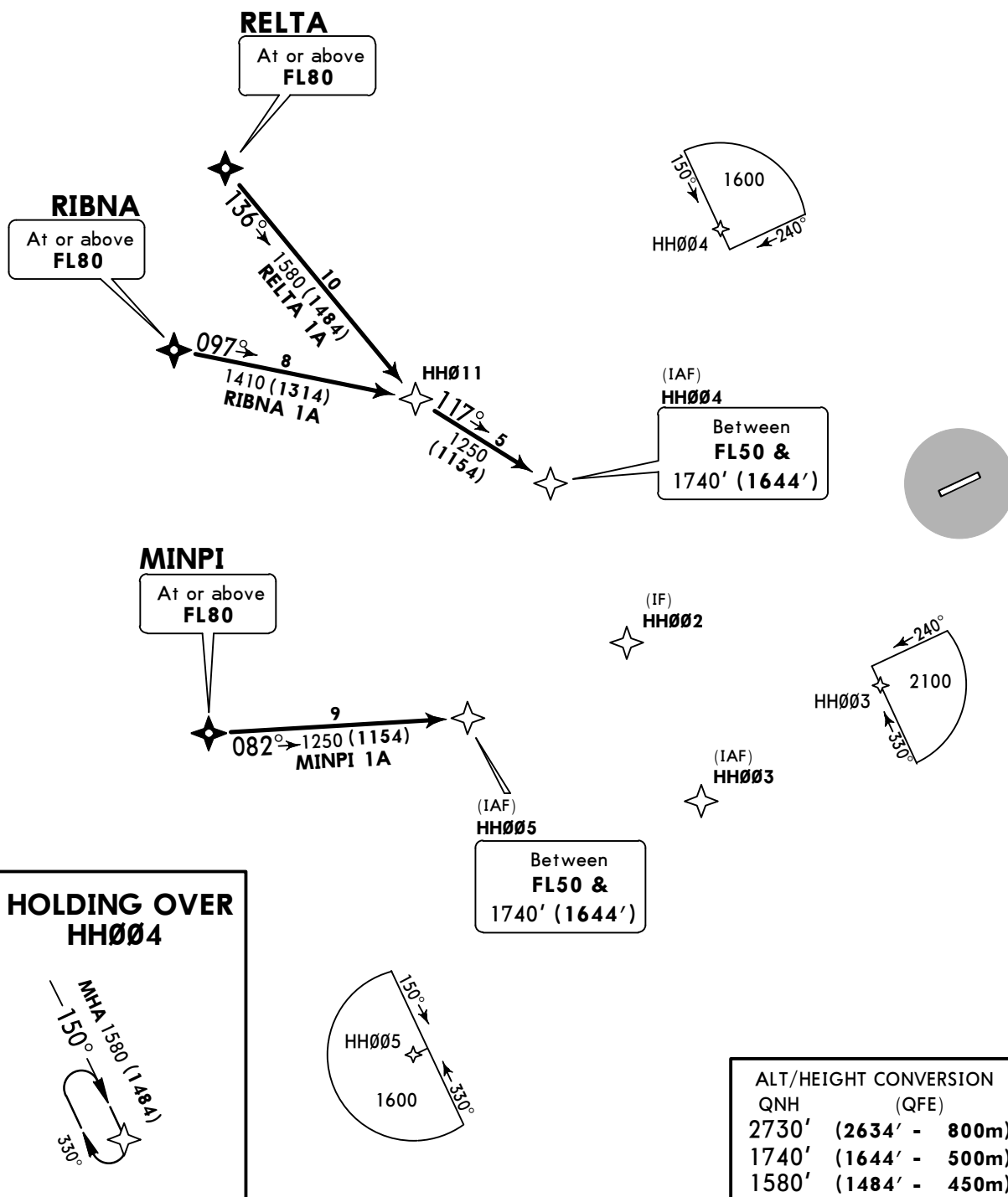
Apt Elev
98'

Alt Set: MM (hPa on request) QNH on request (QFE)
Trans level: FL40 Trans alt: 2730' (2634')
1. RNAV (GNSS).
2. RNAV 1.

TAA
25 NM
IAF
(RWY 06)

MINPI 1A [MINP1A]
RELTA 1A [RELT1A]
RIBNA 1A [RIBN1A]
RWY 06 RNAV ARRIVALS

FOR RUSSIAN USERS ONLY



UOHH/HTG
KHATANGA

JEPPESEN
16 JUN 17 **10-2E** Eff 22 Jun

KHATANGA, RUSSIA
RNAV STAR

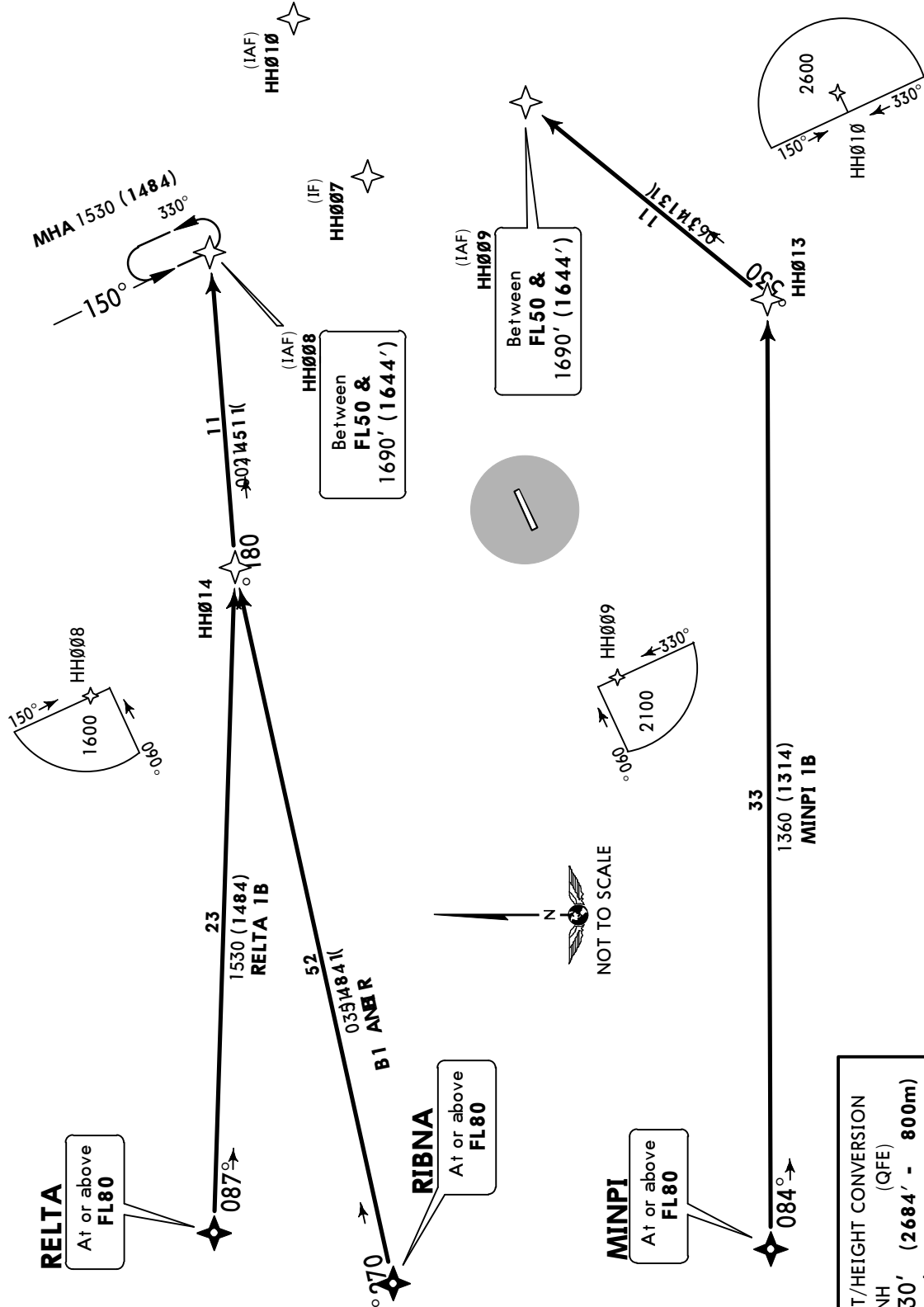
Apt Elev
98'

Alt Set: MM (hPa on request) QNH on request (QFE)
Trans level: FL40 Trans alt: 2730' (2684')
1. RNAV (GNSS).
2. RNAV 1.

MINPI 1B [MINP1B]
RELTA 1B [RELT1B]
RIBNA 1B [RIBN1B]
RWY 24 RNAV ARRIVALS

TAA
25 NM
IAF
(RWY 24)

FOR RUSSIAN USERS ONLY



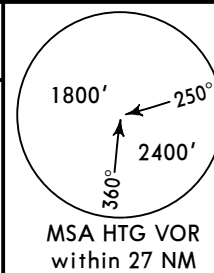
UOHH/HTG
KHATANGA

JEPPESEN
16 JUN 17 **10-2F** Eff 22 Jun

KHATANGA, RUSSIA

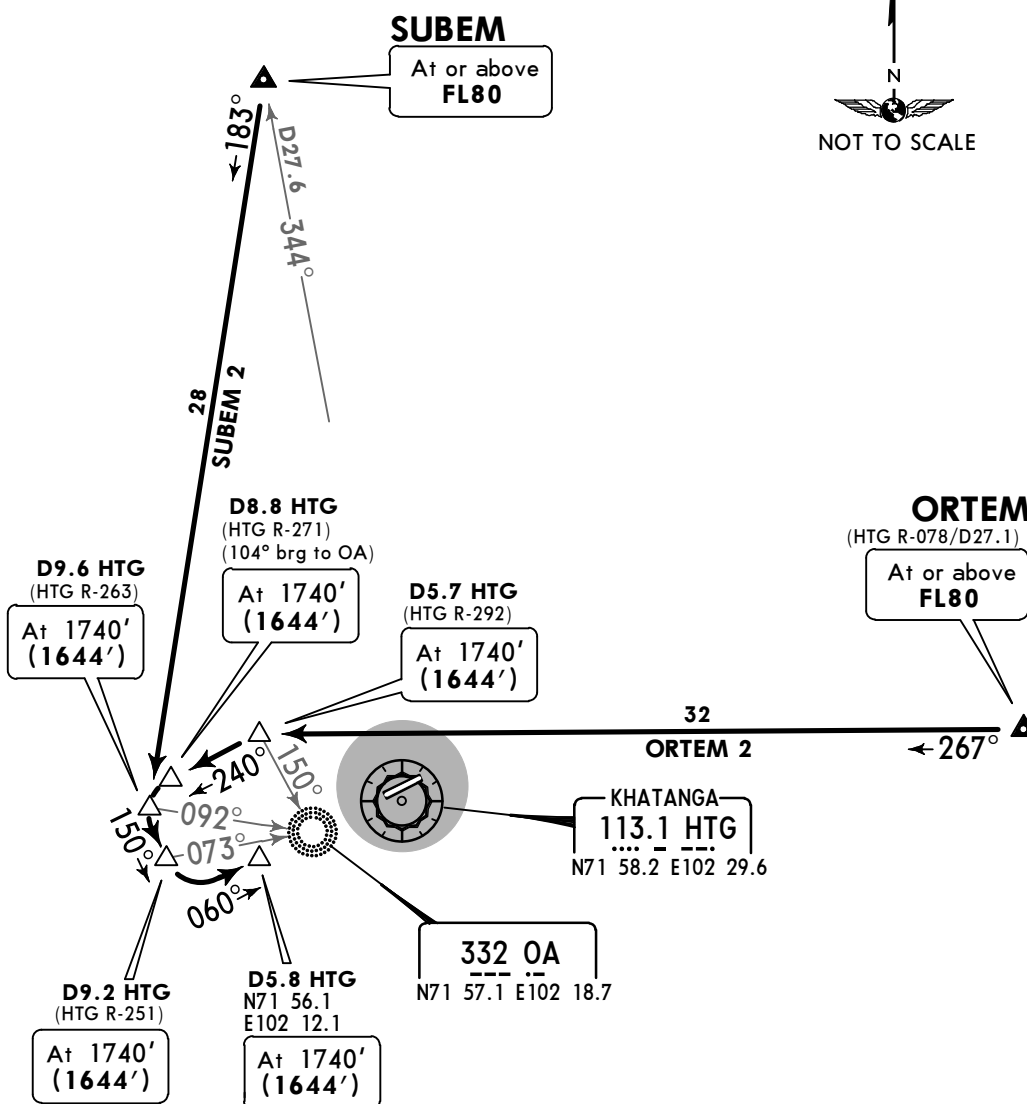
STAR

Apt Elev **98'** Alt Set: MM (hPa on request) QNH on request (QFE)
Trans level: FL40 Trans alt: 2730' (2634')



**ORTEM 2, SUBEM 2
RWY 06 ARRIVALS**

FOR RUSSIAN USERS ONLY



ALT/HEIGHT CONVERSION	
QNH	(QFE)
2730'	(2634' - 800m)
1740'	(1644' - 500m)

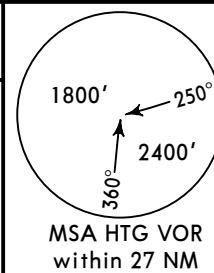
UOHH/HTG
KHATANGA

JEPPESEN
16 JUN 17 **(10-2G)** Eff 22 Jun

KHATANGA, RUSSIA

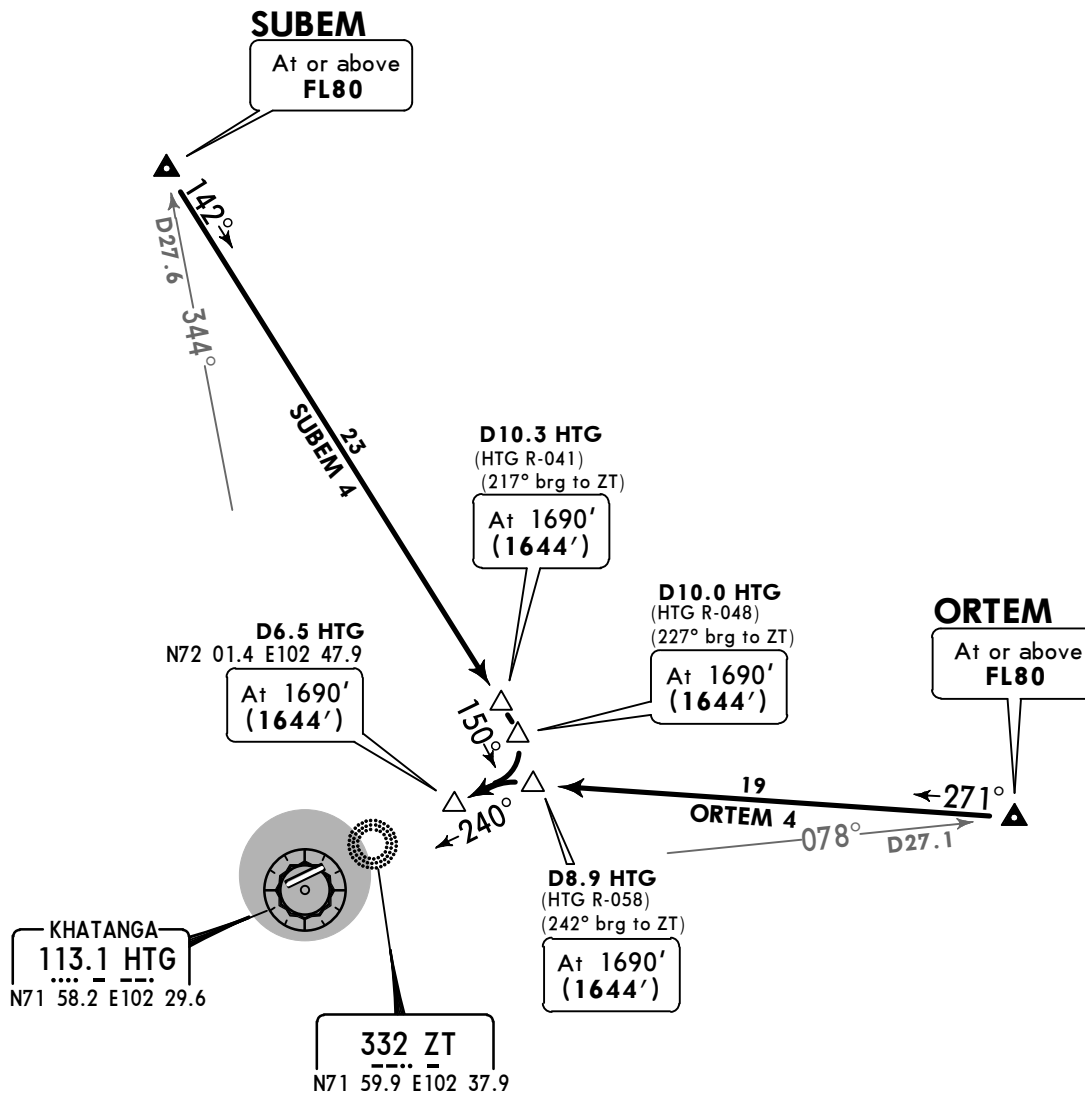
STAR

Apt Elev **98'** Alt Set: MM (hPa on request) QNH on request (QFE)
Trans level: FL40 Trans alt: 2730' (2684')



ORTEM 4, SUBEM 4
RWY 24 ARRIVALS

FOR RUSSIAN USERS ONLY



ALT/HEIGHT CONVERSION	
QNH	(QFE)
2730'	(2684' - 800m)
1690'	(1644' - 500m)

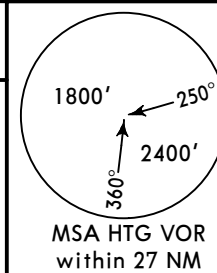
UOHH/HTG
KHATANGA

JEPPESEN
16 JUN 17 **10-2H** Eff 22 Jun

KHATANGA, RUSSIA

STAR

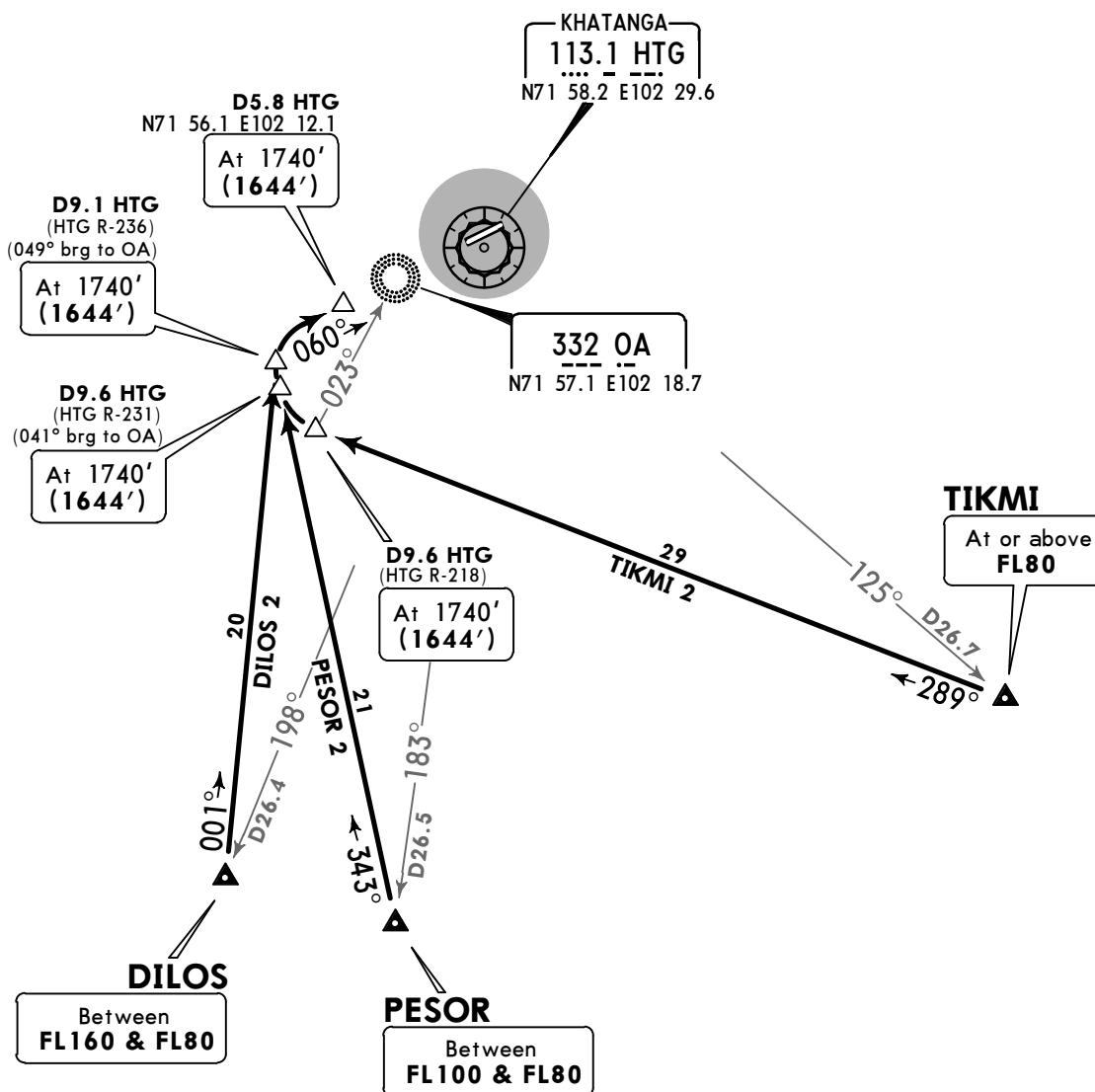
Apt Elev **98'** Alt Set: MM (hPa on request) QNH on request (QFE)
Trans level: FL40 Trans alt: 2730' (2634')



DILOS 2, PESOR 2
BY ATC

TIKMI 2
RWY 06 ARRIVALS

FOR RUSSIAN USERS ONLY



ALT/HEIGHT CONVERSION	
QNH	(QFE)
2730'	(2634' - 800m)
1740'	(1644' - 500m)

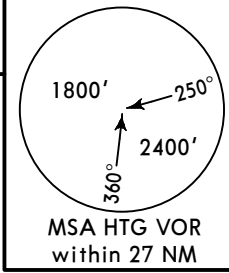
UOHH/HTG
KHATANGA

JEPPESEN
16 JUN 17 **10-2J** Eff 22 Jun

KHATANGA, RUSSIA

STAR

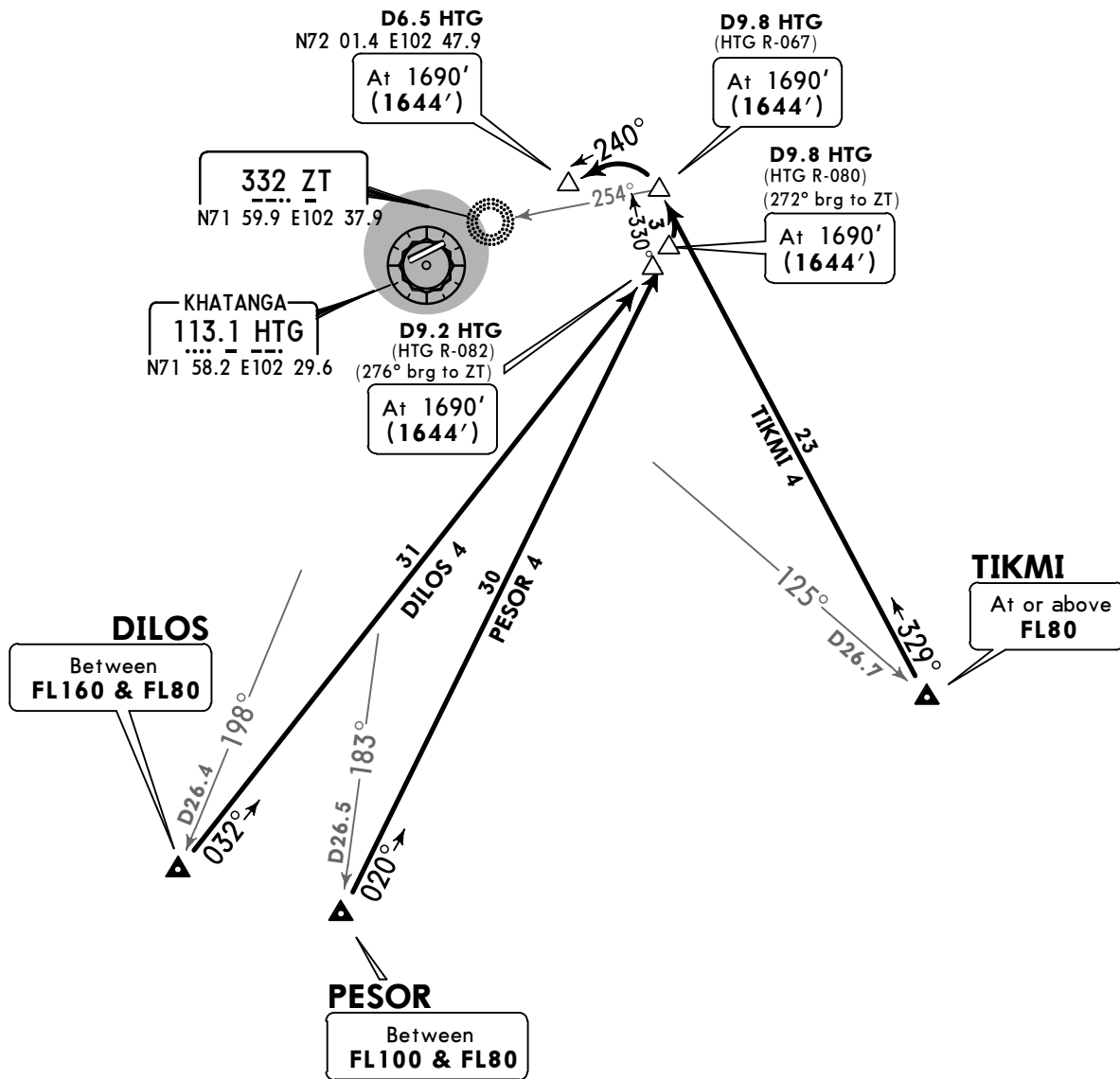
Apt Elev **98'** Alt Set: MM (hPa on request) QNH on request (QFE)
Trans level: FL40 Trans alt: 2730' (2684')



DILOS 4, PESOR 4
BY ATC

TIKMI 4
RWY 24 ARRIVALS

FOR RUSSIAN USERS ONLY



ALT/HEIGHT CONVERSION	
QNH	(QFE)
2730'	(2684' - 800m)
1690'	(1644' - 500m)

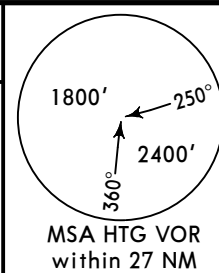
UOHH/HTG
KHATANGA

JEPPESEN
16 JUN 17 **(10-2K)** Eff 22 Jun

KHATANGA, RUSSIA

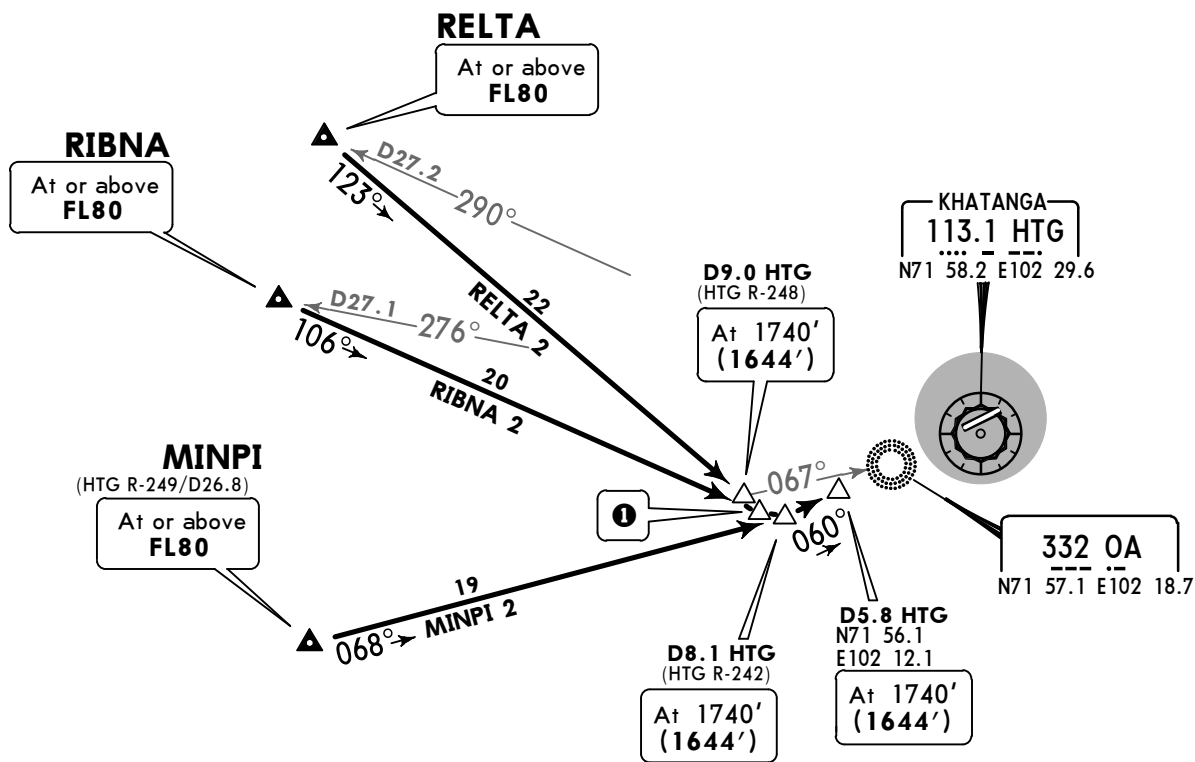
STAR

Apt Elev **98'** Alt Set: MM (hPa on request) QNH on request (QFE)
Trans level: FL40 Trans alt: 2730' (2634')



MINPI 2, RELTA 2, RIBNA 2
RWY 06 ARRIVALS

FOR RUSSIAN USERS ONLY



ALT/HEIGHT CONVERSION	
QNH	(QFE)
2730'	(2634' - 800m)
1740'	(1644' - 500m)

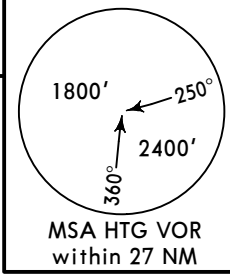
UOHH/HTG
KHATANGA

JEPPESEN
16 JUN 17 **10-2L** Eff 22 Jun

KHATANGA, RUSSIA

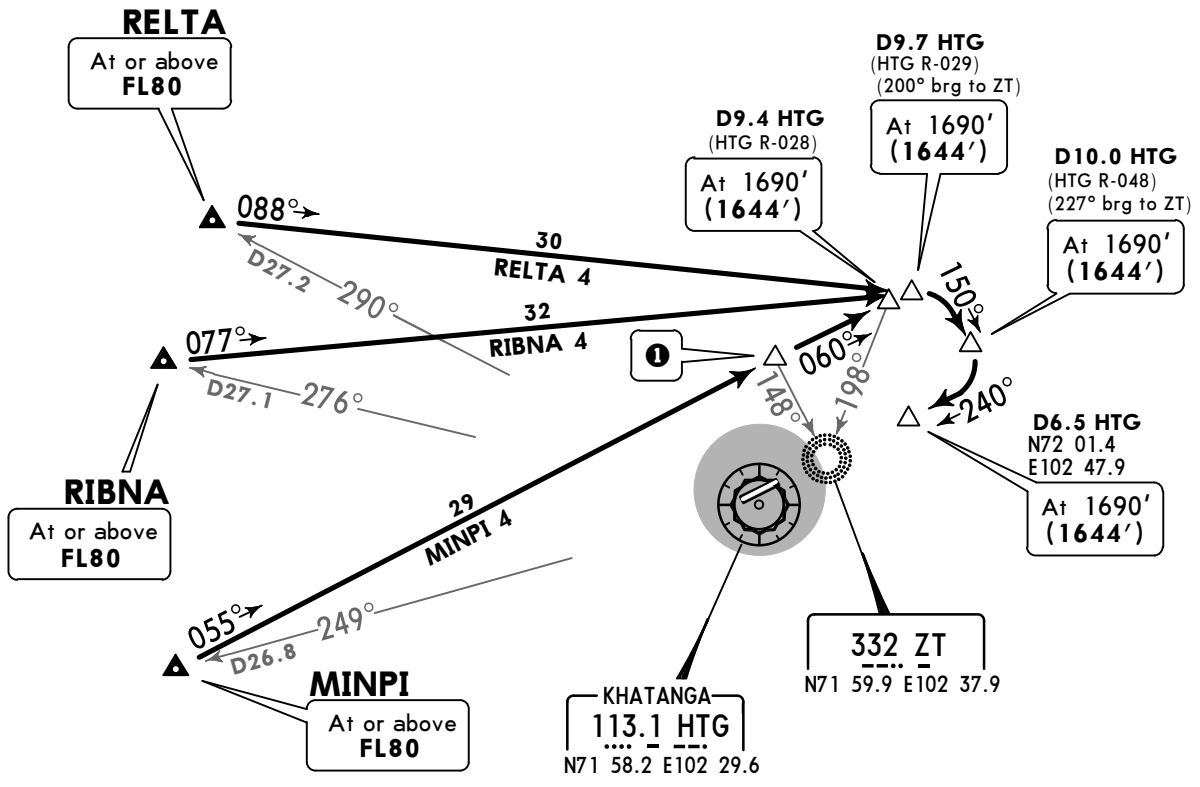
STAR

Apt Elev **98'** Alt Set: MM (hPa on request) QNH on request (QFE)
Trans level: FL40 Trans alt: 2730' (2684')



MINPI 4, RELTA 4, RIBNA 4
RWY 24 ARRIVALS

FOR RUSSIAN USERS ONLY



ALT/HEIGHT CONVERSION	
QNH	(QFE)
2730'	(2684' - 800m)
1690'	(1644' - 500m)

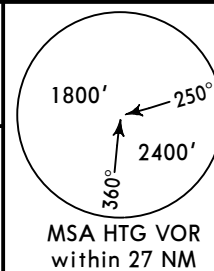
UOHH/HTG
KHATANGA

JEPPESEN
16 JUN 17 10-3 Eff 22 Jun

KHATANGA, RUSSIA
RNAV SID

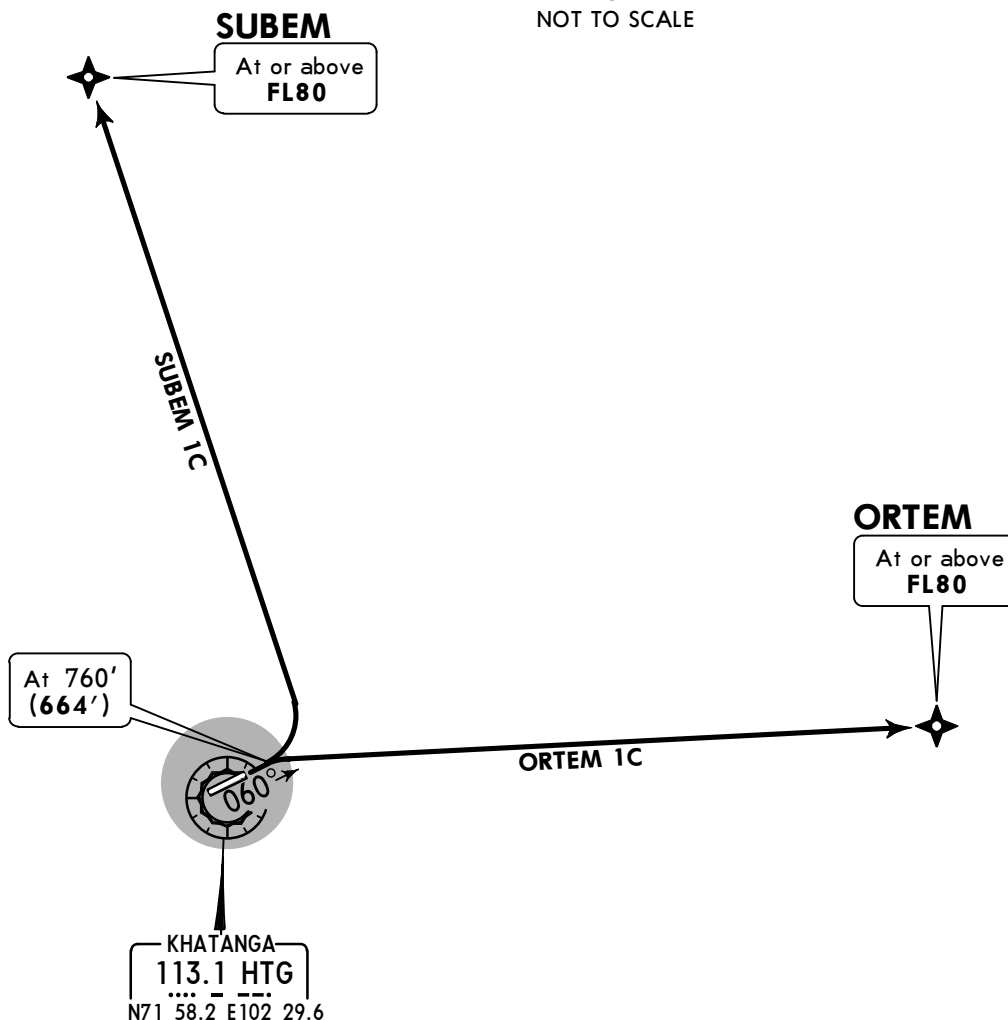
Apt Elev
98'

QNH on request (QFE)
Trans level: FL40 Trans alt: 2730' (2634')
1. RNAV (GNSS).
2. RNAV 1.



ORTEM 1C [ORTE1C]
SUBEM 1C [SUBE1C]
RWY 06 RNAV DEPARTURES

FOR RUSSIAN USERS ONLY



These RNAV SIDs require minimum climb gradients of
ORTEM 1C: 5.6% up to FL90 due to airspace structure.
SUBEM 1C: 4.5% up to FL80 due to airspace structure.

Gnd speed-KT	75	100	150	200	250	300
4.5% V/V (fpm)	342	456	684	911	1139	1367
5.6% V/V (fpm)	425	567	851	1134	1418	1701

ALT/HEIGHT CONVERSION	
QNH	(QFE)
760'	(664' - 200m)
2730'	(2634' - 800m)

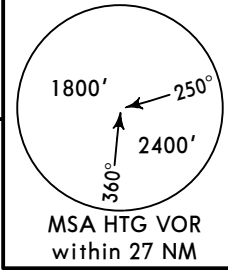
UOHH/HTG
KHATANGA

JEPPESEN
16 JUN 17 **(10-3A)** Eff 22 Jun

KHATANGA, RUSSIA
RNAV SID

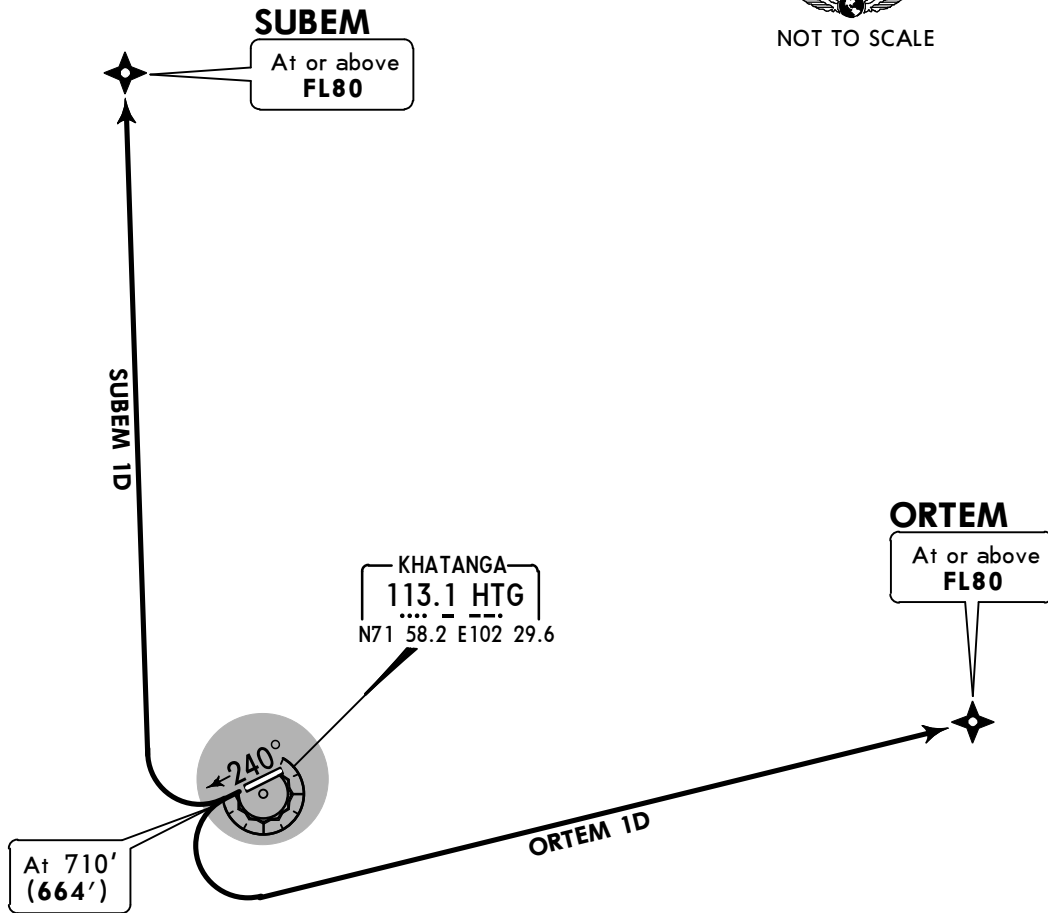
Apt Elev
98'

QNH on request (QFE)
Trans level: FL40 Trans alt: 2730' (2684')
1. RNAV (GNSS).
2. RNAV 1.



ORTEM 1D [ORTE1D]
SUBEM 1D [SUBE1D]
RWY 24 RNAV DEPARTURES

FOR RUSSIAN USERS ONLY



These RNAV SIDs require minimum climb gradients of
ORTEM 1D: 4.1% up to FL90 due to airspace structure.
SUBEM 1D: 4.2% up to FL80 due to airspace structure.

Gnd speed-KT	75	100	150	200	250	300
4.1% V/V (fpm)	311	415	623	830	1038	1246
4.2% V/V (fpm)	319	425	638	851	1063	1276

ALT/HEIGHT CONVERSION	
QNH	(QFE)
710'	(664' - 200m)
2730'	(2684' - 800m)

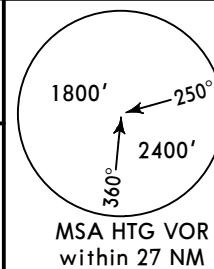
UOHH/HTG
KHATANGA

JEPPESEN
16 JUN 17 **10-3B** Eff 22 Jun

KHATANGA, RUSSIA
RNAV SID

Apt Elev
98'

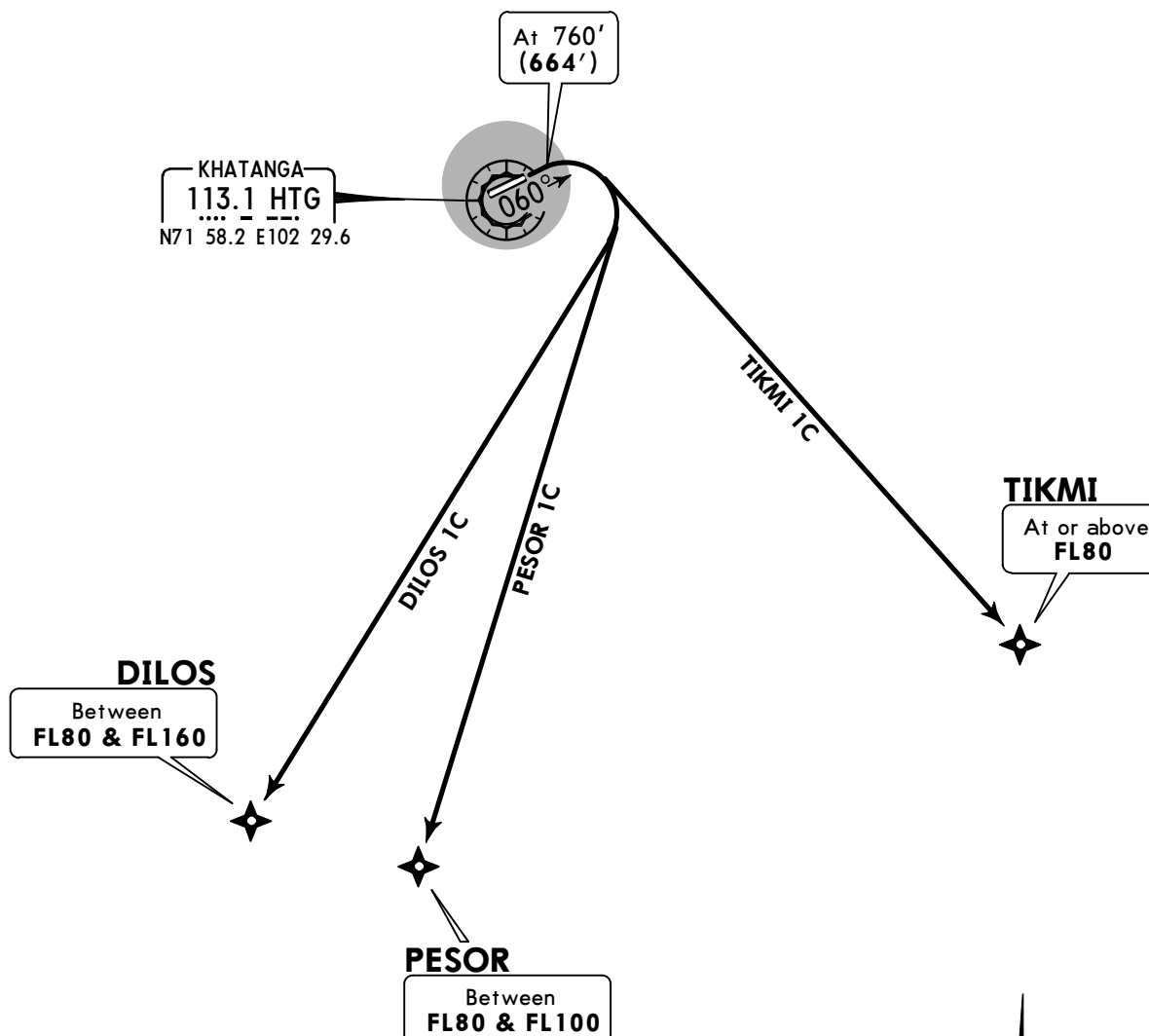
QNH on request (QFE)
Trans level: FL40 Trans alt: 2730' (2634')
1. RNAV (GNSS).
2. RNAV 1.



DILOS 1C [DILO1C], PESOR 1C [PES01C]
BY ATC

TIKMI 1C [TIKM1C]
RWY 06 RNAV DEPARTURES

FOR RUSSIAN USERS ONLY



These RNAV SIDs require minimum climb gradients of

DILOS 1C: 3.8% up to FL80 due to airspace structure.
PESOR 1C: 3.9% up to FL80 due to airspace structure.
TIKMI 1C: 5.2% up to FL90 due to airspace structure.



Gnd speed-KT	75	100	150	200	250	300
3.8% V/V (fpm)	289	385	577	770	962	1154
3.9% V/V (fpm)	296	395	592	790	987	1185
5.2% V/V (fpm)	395	527	790	1053	1316	1580

ALT/HEIGHT CONVERSION	
QNH	(QFE)
760'	(664' - 200m)
2730'	(2634' - 800m)

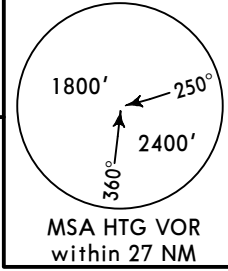
UOHH/HTG
KHATANGA

JEPPESEN
16 JUN 17 **(10-3C)** Eff 22 Jun

KHATANGA, RUSSIA
RNAV SID

Apt Elev
98'

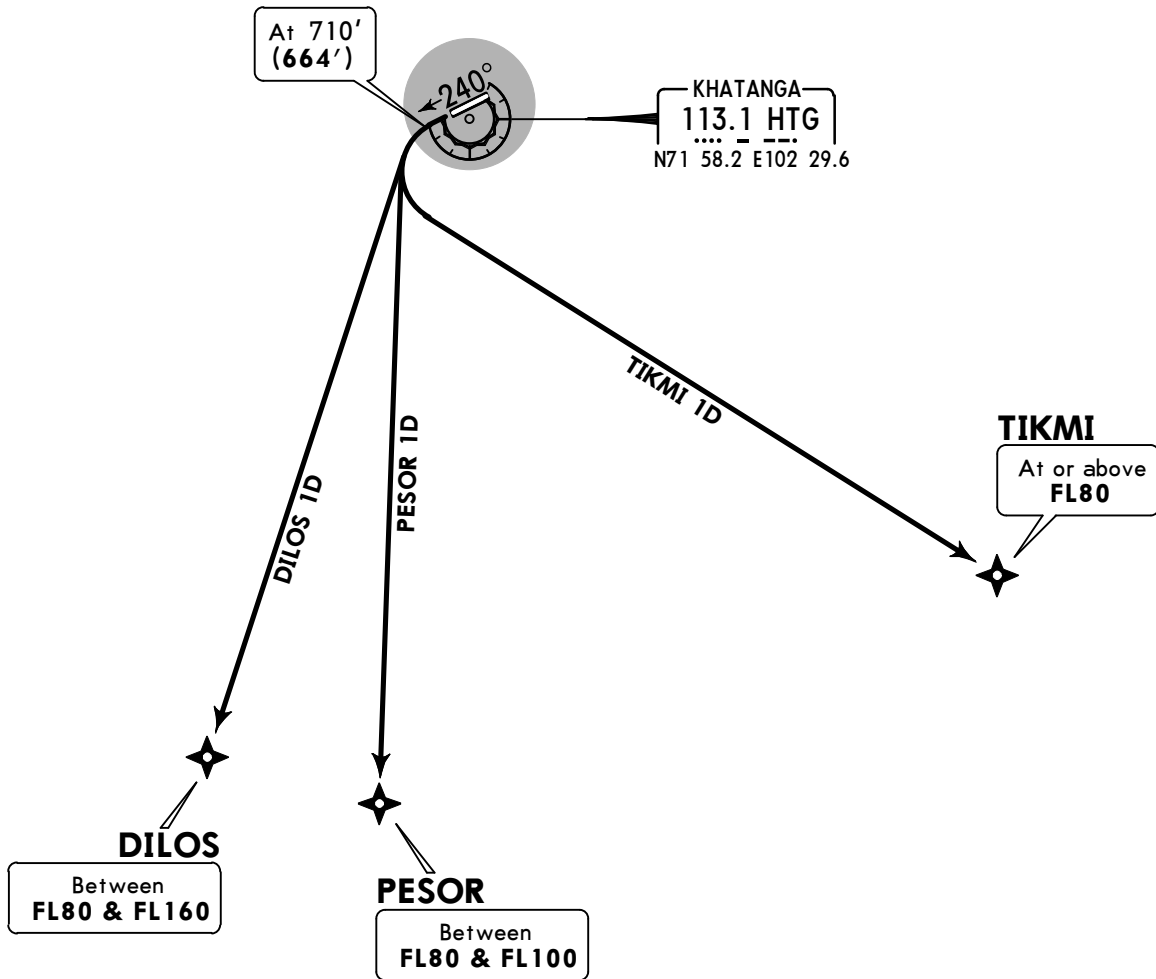
QNH on request (QFE)
Trans level: FL40 Trans alt: 2730' (2684')
1. RNAV (GNSS).
2. RNAV 1.



DILOS 1D [DILO1D], PESOR 1D [PESO1D]
BY ATC

TIKMI 1D [TIKM1D]
RWY 24 RNAV DEPARTURES

FOR RUSSIAN USERS ONLY



These RNAV SIDs require minimum climb gradients of

- DILOS 1D:** 4.9% up to FL80 due to airspace structure.
- PESOR 1D:** 4.7% up to FL80 due to airspace structure.
- TIKMI 1D:** 4.6% up to FL90 due to airspace structure.



Gnd speed-KT	75	100	150	200	250	300
4.6% V/V (fpm)	349	466	699	932	1165	1397
4.7% V/V (fpm)	357	476	714	952	1190	1428
4.9% V/V (fpm)	372	496	744	992	1241	1489

ALT/HEIGHT CONVERSION	
QNH	(QFE)
710'	(664' - 200m)
2730'	(2684' - 800m)

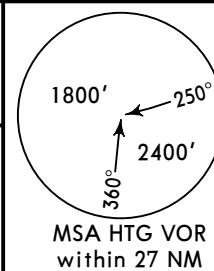
UOHH/HTG
KHATANGA

JEPPESEN
16 JUN 17 **(10-3D)** Eff 22 Jun

KHATANGA, RUSSIA
RNAV SID

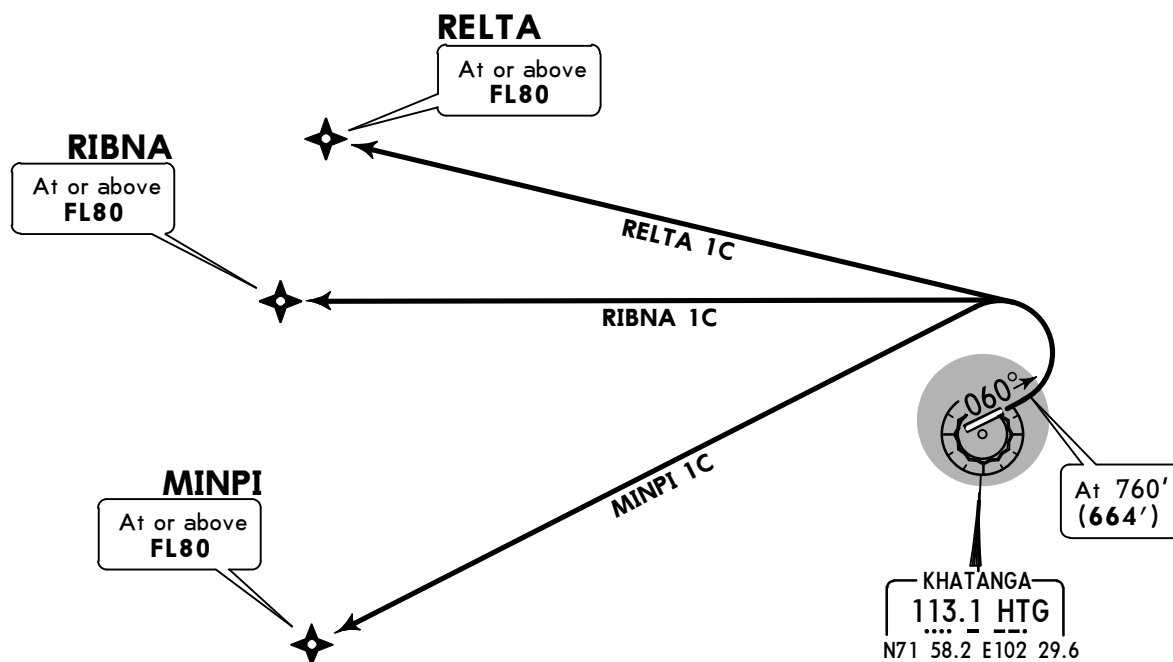
Apt Elev
98'

QNH on request (QFE)
Trans level: FL40 Trans alt: 2730' (2634')
1. RNAV (GNSS).
2. RNAV 1.



MINPI 1C [MINP1C]
RELTA 1C [RELT1C]
RIBNA 1C [RIBN1C]
RWY 06 RNAV DEPARTURES

FOR RUSSIAN USERS ONLY



These RNAV SIDs require minimum climb gradients of

- MINPI 1C:** 3.5% up to FL80 due to airspace structure.
- RELTA 1C:** 3.8% up to FL80 due to airspace structure.
- RIBNA 1C:** 3.7% up to FL80 due to airspace structure.

Gnd speed-KT	75	100	150	200	250	300
3.5% V/V (fpm)	266	354	532	709	886	1063
3.7% V/V (fpm)	281	375	562	749	937	1124
3.8% V/V (fpm)	289	385	577	770	962	1154

ALT/HEIGHT CONVERSION	
QNH	(QFE)
760'	(664' - 200m)
2730'	(2634' - 800m)

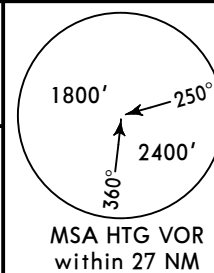
UOHH/HTG
KHATANGA

JEPPESEN
16 JUN 17 **(10-3E)** Eff 22 Jun

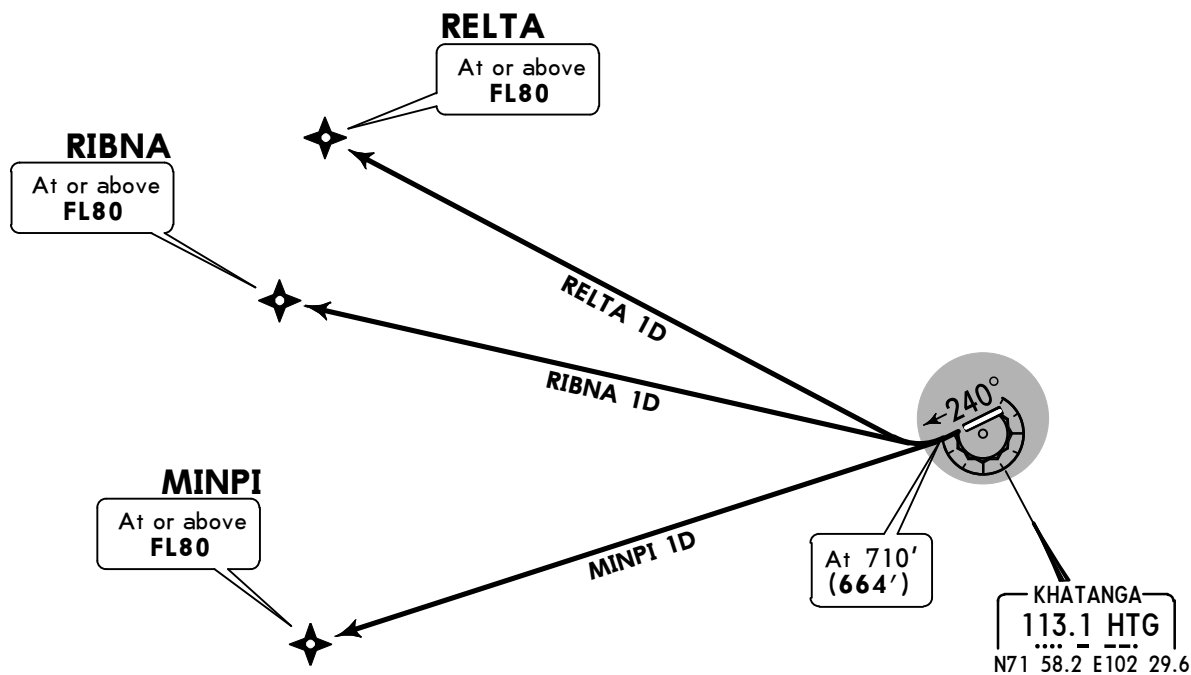
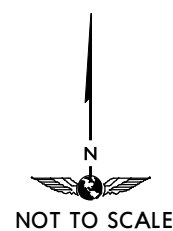
KHATANGA, RUSSIA
RNAV SID

Apt Elev
98'

QNH on request (QFE)
Trans level: FL40 Trans alt: 2730' (2684')
1. RNAV (GNSS).
2. RNAV 1.



MINPI 1D [MINP1D]
RELTA 1D [RELT1D]
RIBNA 1D [RIBN1D]
RWY 24 RNAV DEPARTURES
FOR RUSSIAN USERS ONLY



These RNAV SIDs require minimum climb gradients of

- MINPI 1D:** 5.0% up to FL80 due to airspace structure.
- RELTA 1D:** 4.8% up to FL80 due to airspace structure.
- RIBNA 1D:** 4.9% up to FL80 due to airspace structure.

Gnd speed-KT	75	100	150	200	250	300
4.8% V/V (fpm)	365	486	729	972	1215	1458
4.9% V/V (fpm)	372	496	744	992	1241	1489
5.0% V/V (fpm)	380	506	760	1013	1266	1519

ALT/HEIGHT CONVERSION	
QNH	(QFE)
710'	(664' - 200m)
2730'	(2684' - 800m)

UOHH/HTG
KHATANGA

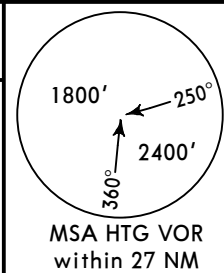
JEPPESEN
16 JUN 17 **(10-3F)** Eff 22 Jun

KHATANGA, RUSSIA

SID

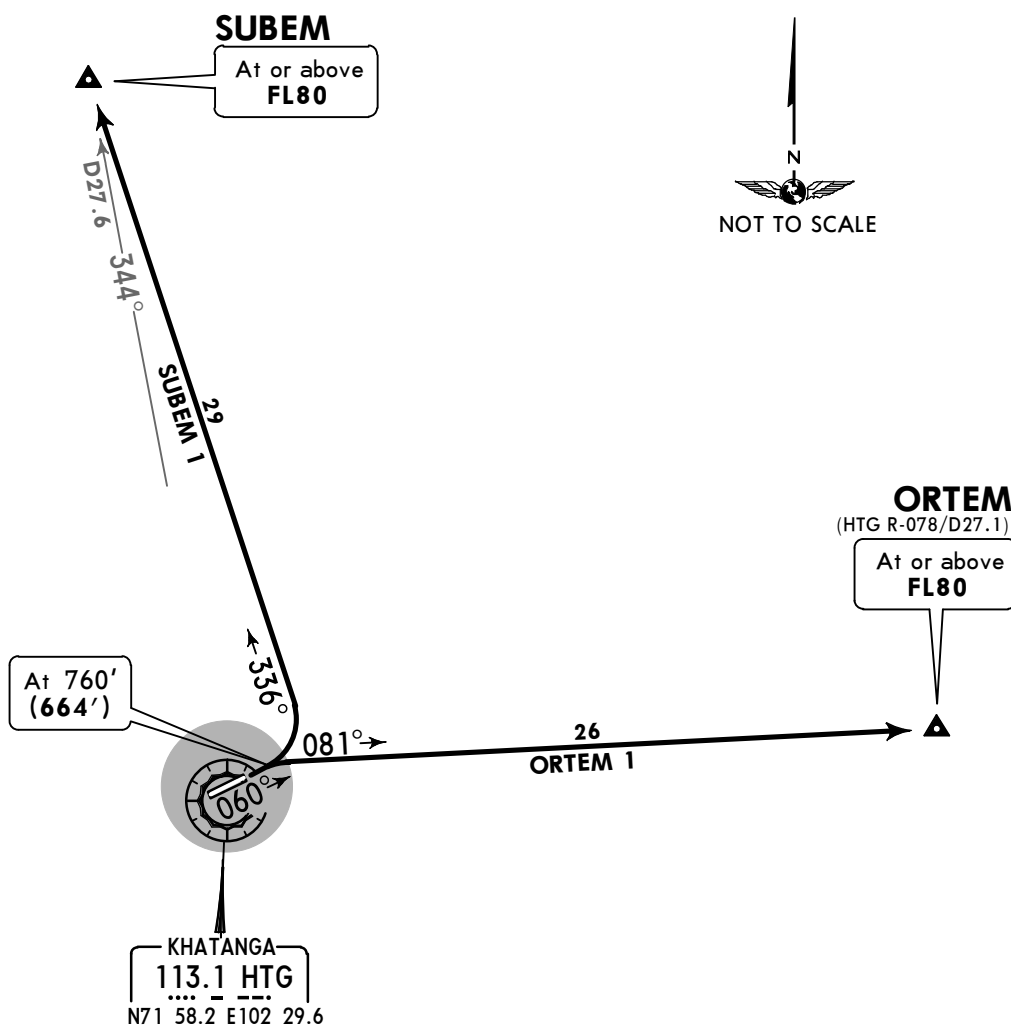
Apt Elev
98'

QNH on request (QFE)
Trans level: FL40 Trans alt: 2730' (2634')



ORTEM 1, SUBEM 1
RWY 06 DEPARTURES

FOR RUSSIAN USERS ONLY



These SIDs require minimum climb gradients of

ORTEM 1: 4.8% until ORTEM.

SUBEM 1: 4.4% until SUBEM.

Gnd speed-KT	75	100	150	200	250	300
4.8% V/V(fpm)	365	486	729	972	1215	1458
4.4% V/V(fpm)	334	446	668	891	1114	1337

ALT/HEIGHT CONVERSION	
QNH	(QFE)
760'	(664' - 200m)
2730'	(2634' - 800m)

UOHH/HTG
KHATANGA

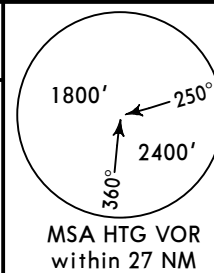
JEPPESEN
16 JUN 17 **(10-3G)** Eff 22 Jun

KHATANGA, RUSSIA

SID

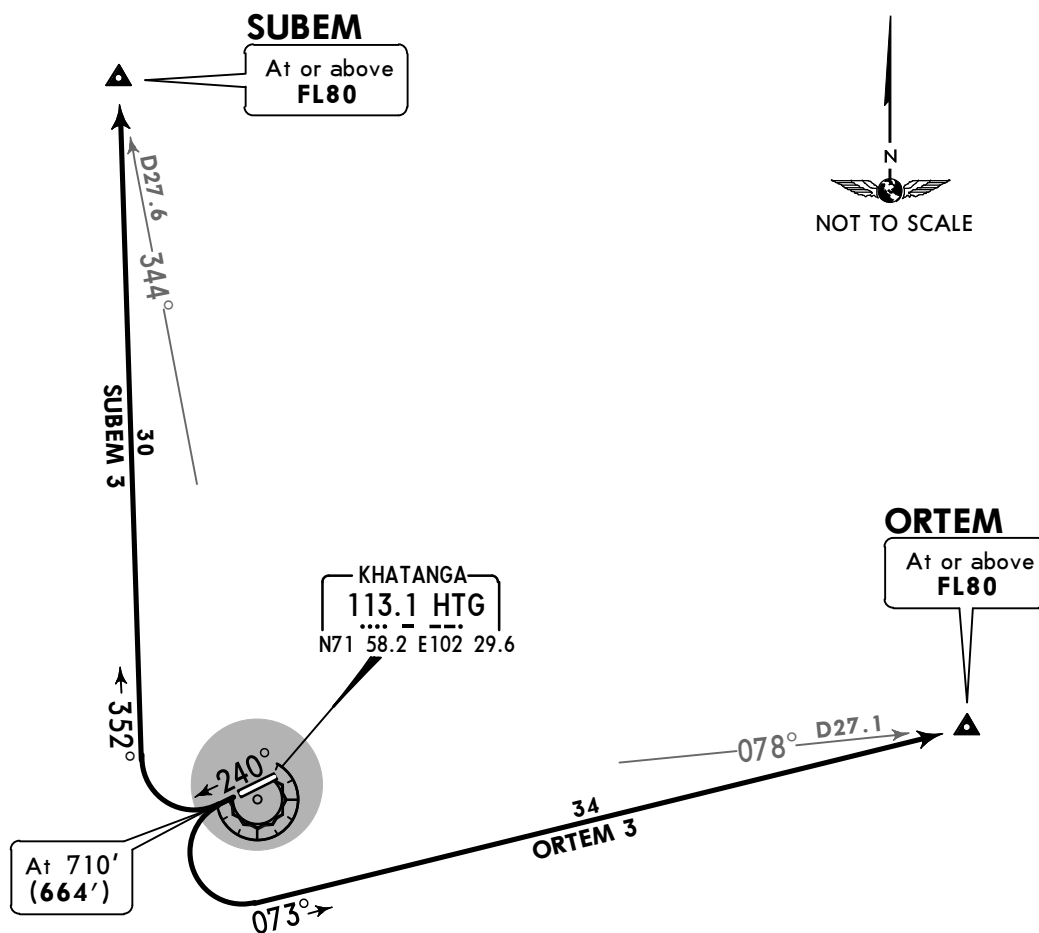
Apt Elev
98'

QNH on request (QFE)
Trans level: FL40 Trans alt: 2730' (2684')



ORTEM 3, SUBEM 3
RWY 24 DEPARTURES

FOR RUSSIAN USERS ONLY



These SIDs require minimum climb gradients of

ORTEM 3: 3.7% until ORTEM.
SUBEM 3: 4.2% until SUBEM.

Gnd speed-KT	75	100	150	200	250	300
4.2% V/V(fpm)	319	425	638	851	1063	1276
3.7% V/V(fpm)	281	375	562	749	937	1124

ALT/HEIGHT CONVERSION	
QNH	(QFE)
710'	(664' - 200m)
2730'	(2684' - 800m)

UOHH/HTG
KHATANGA

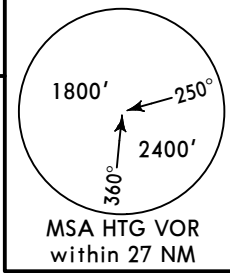
JEPPESEN
16 JUN 17 **(10-3H)** Eff 22 Jun

KHATANGA, RUSSIA

SID

Apt Elev
98'

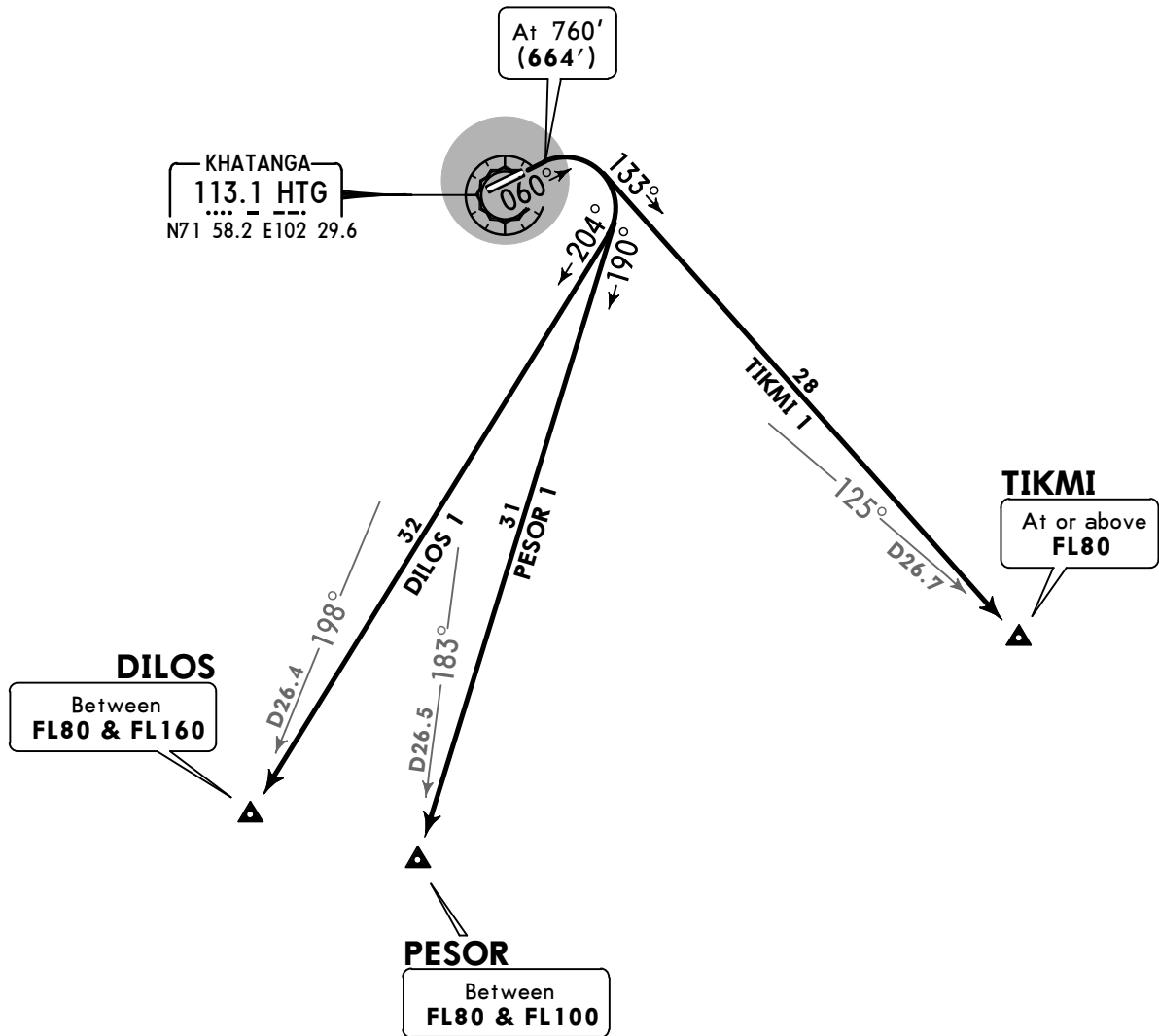
QNH on request (QFE)
Trans level: FL40 Trans alt: 2730' (2634')



DILOS 1, PESOR 1
BY ATC

TIKMI 1
RWY 06 DEPARTURES

FOR RUSSIAN USERS ONLY



These SIDs require minimum climb gradients of

- DILOS 1:** 3.9% until DILOS.
- PESOR 1:** 4.0% until PESOR.
- TIKMI 1:** 4.5% until TIKMI.



Gnd speed-KT	75	100	150	200	250	300
4.5% V/V(fpm)	342	456	684	911	1139	1367
4.0% V/V(fpm)	304	405	608	810	1013	1215
3.9% V/V(fpm)	296	395	592	790	987	1185

ALT/HEIGHT CONVERSION	
QNH	(QFE)
760'	(664' - 200m)
2730'	(2634' - 800m)

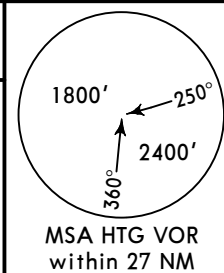
UOHH/HTG
KHATANGA

JEPPESEN
16 JUN 17 **(10-3J)** Eff 22 Jun

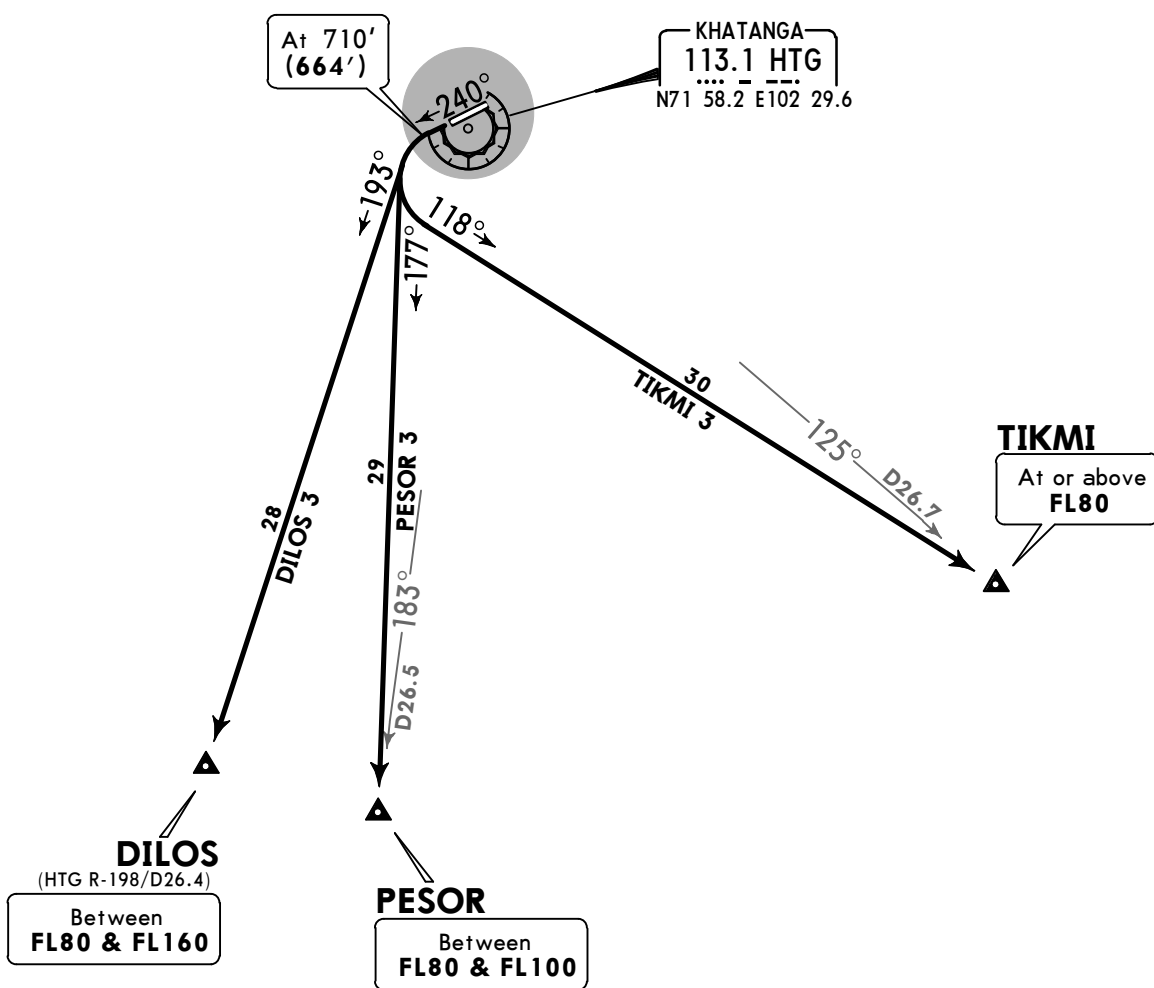
KHATANGA, RUSSIA

SID

Apt Elev **98'** QNH on request (QFE)
Trans level: FL40 Trans alt: 2730' (2684')



DILOS 3, PESOR 3
BY ATC
TIKMI 3
RWY 24 DEPARTURES
FOR RUSSIAN USERS ONLY



These SIDs require minimum climb gradients of

DILOS 3: 4.7% until DILOS.
PESOR 3: 4.6% until PESOR.
TIKMI 3: 4.1% until TIKMI.

Gnd speed-KT	75	100	150	200	250	300
4.1% V/V (fpm)	311	415	623	830	1038	1246
4.6% V/V (fpm)	349	466	699	932	1165	1397
4.7% V/V (fpm)	357	476	714	952	1190	1428



ALT/HEIGHT CONVERSION	
QNH	(QFE)
710'	(664' - 200m)
2730'	(2684' - 800m)

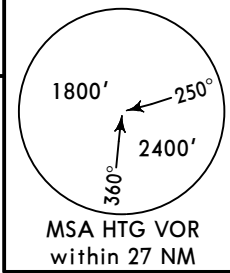
UOHH/HTG
KHATANGA

JEPPESEN
16 JUN 17 **10-3K** Eff 22 Jun

KHATANGA, RUSSIA

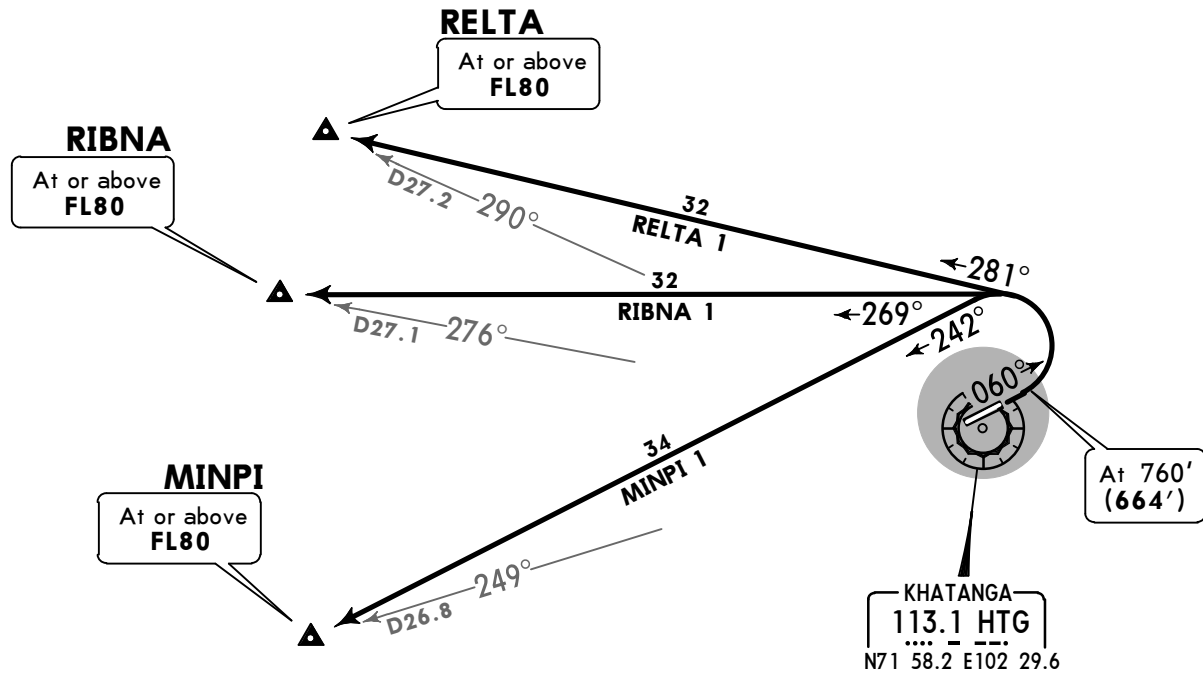
SID

Apt Elev **98'** QNH on request (QFE)
Trans level: FL40 Trans alt: 2730' (2634')



MINPI 1, RELTA 1, RIBNA 1
RWY 06 DEPARTURES

FOR RUSSIAN USERS ONLY



These SIDs require minimum climb gradients of

- MINPI 1:** 3.7% until MINPI.
- RELTA 1:** 4.0% until RELTA.
- RIBNA 1:** 3.8% until RIBNA.

Gnd speed-KT	75	100	150	200	250	300
4.0% V/V(fpm)	304	405	608	810	1013	1215
3.8% V/V(fpm)	289	385	577	770	962	1155
3.7% V/V(fpm)	281	375	562	749	937	1124

ALT/HEIGHT CONVERSION	
QNH	(QFE)
760'	(664' - 200m)
2730'	(2634' - 800m)

UOHH/HTG
KHATANGA

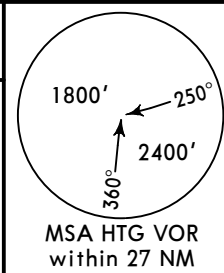
JEPPESEN
16 JUN 17 **10-3L** Eff 22 Jun

KHATANGA, RUSSIA

SID

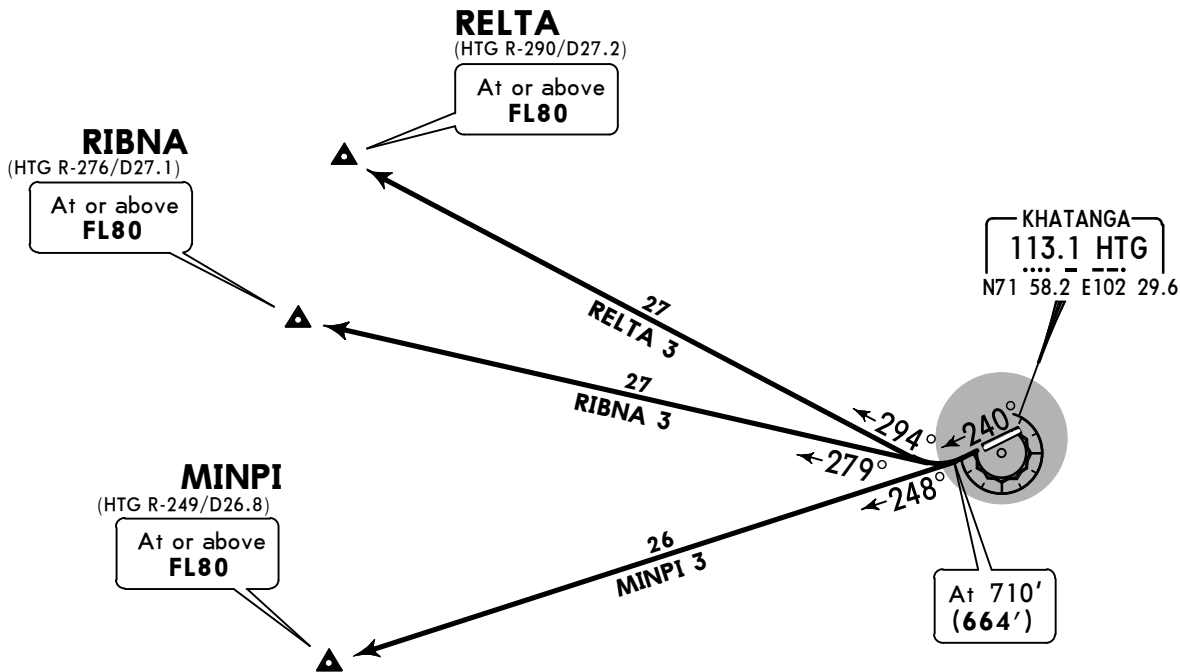
Apt Elev
98'

QNH on request (QFE)
Trans level: FL40 Trans alt: 2730' (2684')



MINPI 3, RELTA 3, RIBNA 3
RWY 24 DEPARTURES

FOR RUSSIAN USERS ONLY



These SIDs require minimum climb gradients of

- MINPI 3:** 4.8% until MINPI.
- RELTA 3:** 4.7% until RELTA.
- RIBNA 3:** 4.7% until RIBNA.

Gnd speed-KT	75	100	150	200	250	300
4.8% V/V(fpm)	365	486	729	972	1215	1458
4.7% V/V(fpm)	357	476	714	952	1190	1428

ALT/HEIGHT CONVERSION	
QNH	(QFE)
710'	(664' - 200m)
2730'	(2684' - 800m)

UOHH/HTG

Apt Elev **98'**
N71 58.7 E102 29.6



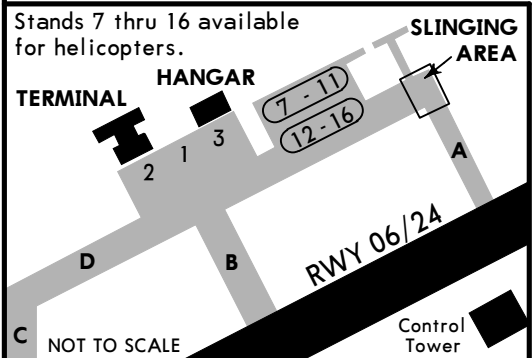
16 JUN 17 **10-9** Eff 22 Jun

KHATANGA, RUSSIA

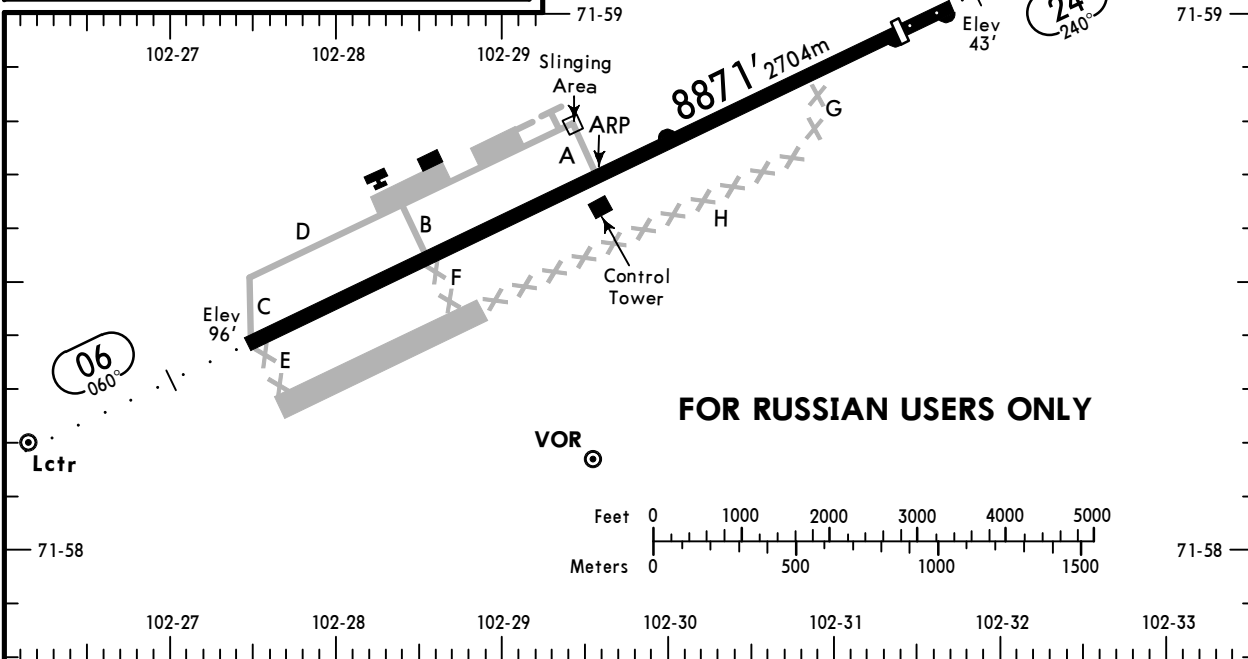
KHATANGA

*KHATANGA Vyshka (TWR)

118.1 Russian only



STAND	COORDINATES
1	N71 58.7 E102 28.5
2	N71 58.7 E102 28.4
3	N71 58.7 E102 28.6



FOR RUSSIAN USERS ONLY

Rwy 06/24: PAPI lights operate as touch down lights, coloured white.
Taxiing and towing are prohibited without controller's permission.
For acft with MTOM exceeding 60 tons cross wind component 0.77 of max value published in AOM with given rwy braking action condition for take-off/landing.

ADDITIONAL RUNWAY INFORMATION

RWY	ALS	PAPI-L (2.83°)	USABLE LENGTHS		WIDTH
			Threshold	Glide Slope	
06	RL (60m)	ALS	PAPI-L (2.83°)	7959' 2426m	157'
24	RL (60m)	ALS	PAPI-R (2.67°)	8609' 2624m	48m

① TAKE-OFF RUN AVAILABLE

RWY 06:
From rwy head 8379' (2554m) (Cat B, C & D: first 492'/150m unusable for take-off.)
twy B int 6516' (1986m)

② First 262'/80m unusable for take-off.

TAKE-OFF

AIR CARRIER (JAA)

All Rwys

	LVP must be in force RCLM (DAY only) or RL	RCLM (DAY only) or RL
A		
B	250m	400m
C		
D	300m	

UOHH/HTG KHATANGA

JEPPESEN
27 APR 18 **(11-1)**

KHATANGA, RUSSIA ILS or 2 NDB Rwy 06

*KHATANGA Vyshka (TWR)

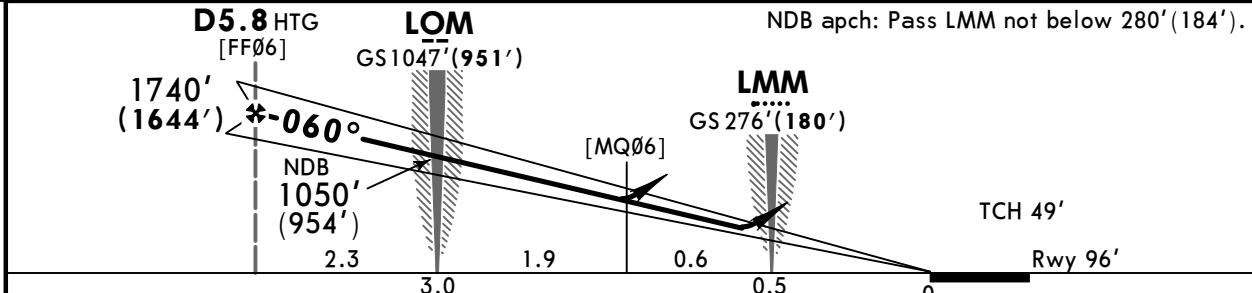
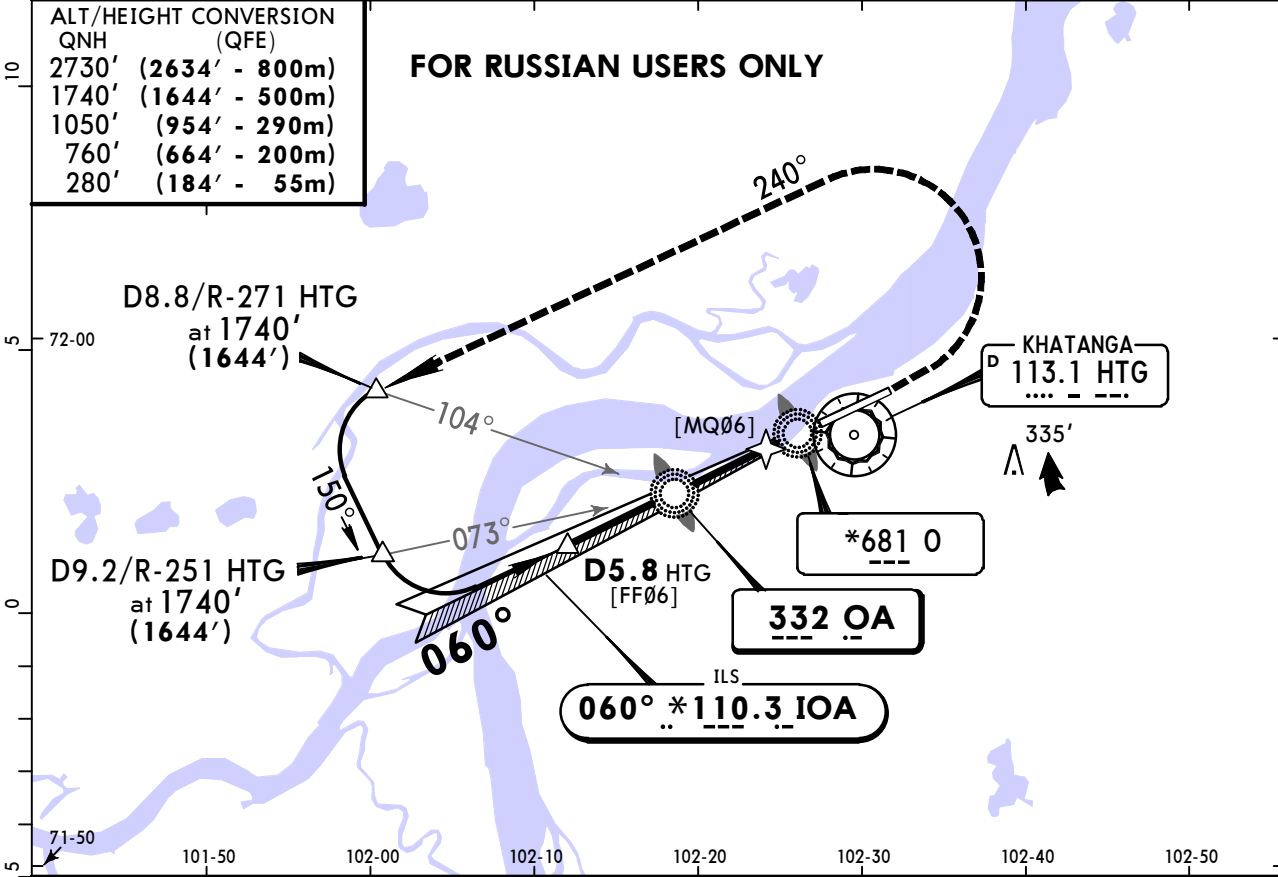
BRIEFING STRIP™

LOC IOA *110.3		Final Apch Crs 060°	GS LOM 1047'(951')	ILS DA(H) Refer to Minimums	Apt Elev 98' Rwy 96'	
NDB OA 332			Minimum Alt D5.8 HTG 1740'(1644')	NDB MDA(H) Refer to Minimums		
MISSED APCH: Climb to 760'(664'), then turn LEFT onto 240° climbing to 1740'(1644'), then according to chart.						MSA HTG VOR within 27 NM
Alt Set: MM (hPa on req)		QNH on req (QFE)		Trans level: FL 40		Trans alt: 2730'(2634')

ALT/HEIGHT CONVERSION
QNH (QFE)

2730'	(2634' - 800m)
1740'	(1644' - 500m)
1050'	(954' - 290m)
760'	(664' - 200m)
280'	(184' - 55m)

FOR RUSSIAN USERS ONLY



Gnd speed-Kts	70	90	100	120	140	160		760' (664')	240° LT	1740' (1644')
ILS GS or NDB Desc Angle	2.83°	350	451	501	601	801				

STRAIGHT-IN LANDING RWY 06		
ILS A: 296'(200') C: 313'(217') DA(H) B: 303'(207') D: 323'(227') FULL ALS out	LOC (GS out)	2 NDB A: 400'(304') C: 460'(364') MDA(H) B: 420'(324') D: 480'(384') ALS out
A		1600m
B		1700m
C	1200m	1900m
D		2100m
NOT AUTH		

PANS OPS

**UOHH/HTG
KHATANGA**

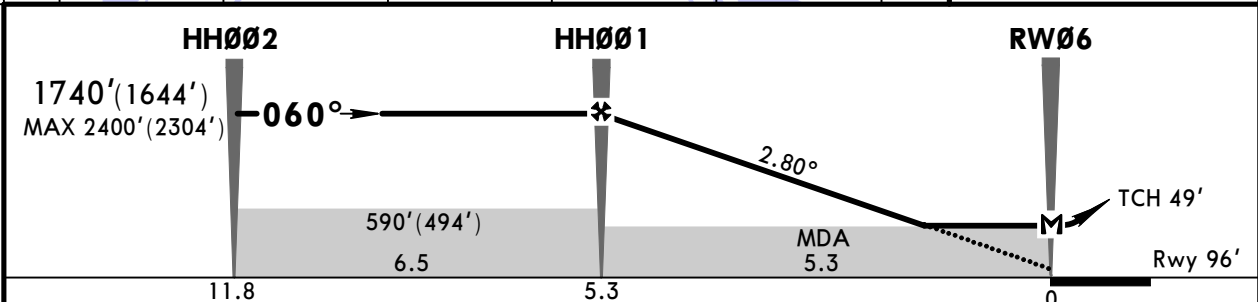
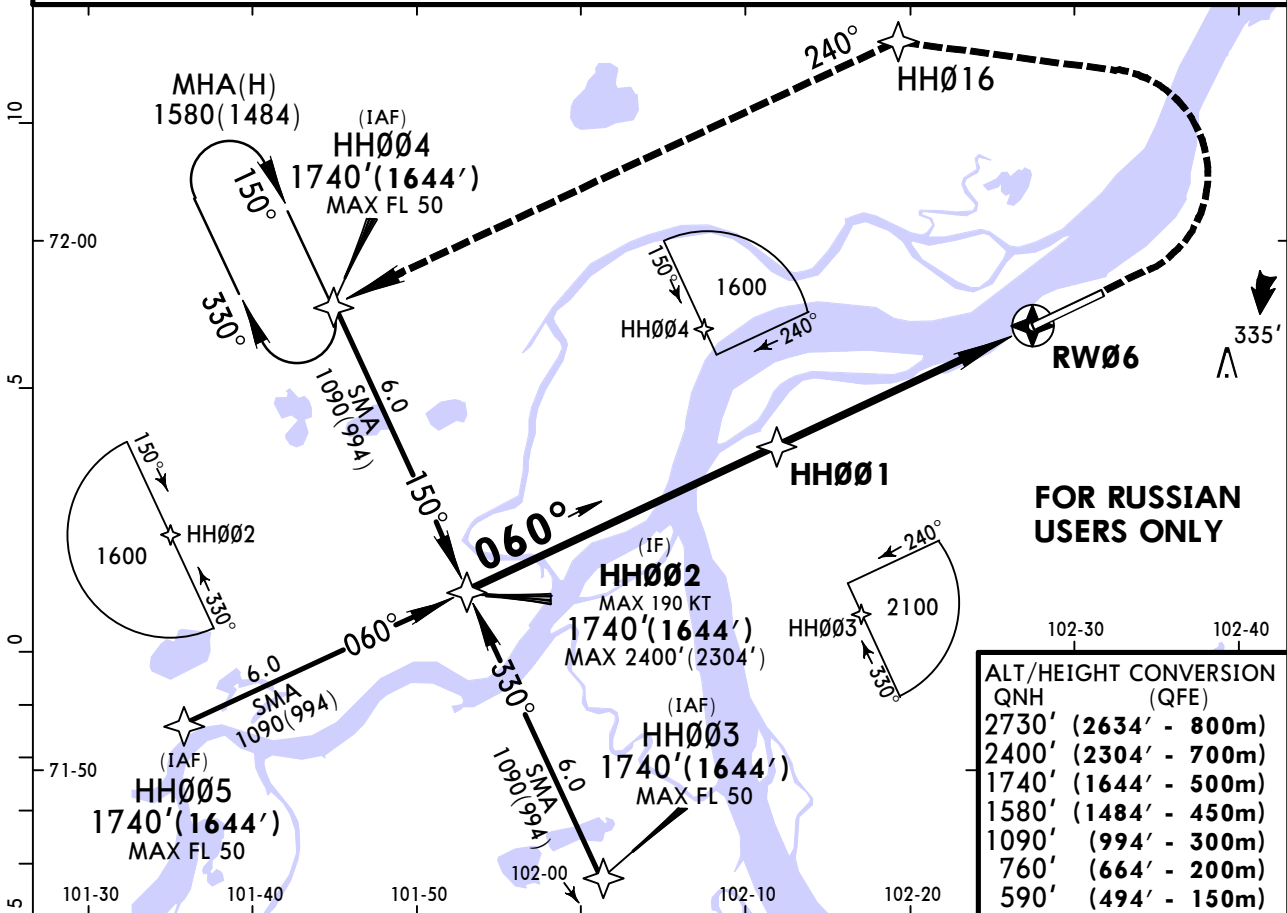
JEPESEN
27 APR 18 (12-1)

**KHATANGA, RUSSIA
RNAV (GNSS) Rwy 06**

*KHATANGA Vyshka (TWR)

BRIEFING STRIP™

118.1 Russian only					TAA 25 NM IAF/IF
RNAV	Final Apch Crs 060°	Procedure Alt HH001 1740'(1644')	LNAV MDA(H) 460'(364')	Apt Elev 98' Rwy 96'	
MISSED APCH: Climb STRAIGHT AHEAD to 760'(664'), then turn LEFT to HH016, then turn LEFT to HH004 climbing to 1740'(1644') or above.					
Alt Set: MM (hPa on req)		QNH on req (QFE)		Trans level: FL 40	
1. GNSS required.		2. RNP approach.		Trans alt: 2730' (2634')	



Gnd speed-Kts	70	90	100	120	140	160	ALS PAPI	760' (664')	HH016	HH004
Descent Angle	2.80°	347	446	495	594	693				
MAP at RW06										

STRAIGHT-IN LANDING RWY 06		CIRCLE-TO-LAND	
LNAV		CIRCLING	
MDA(H) 460'(364')		MDA(H)	
ALS out		Max Kts	
A		100	530'(432') 1600m
B	1600m	135	610'(512') 1600m
C		180	740'(642') 2800m
D	2000m	205	810'(712') 3600m

PANS OPS

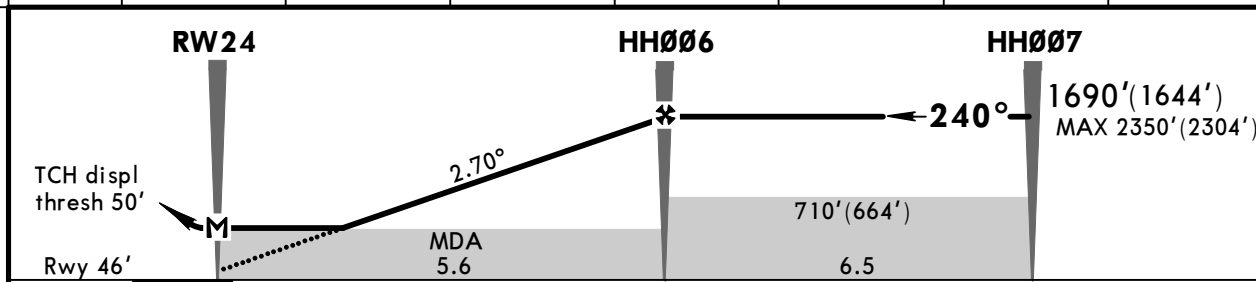
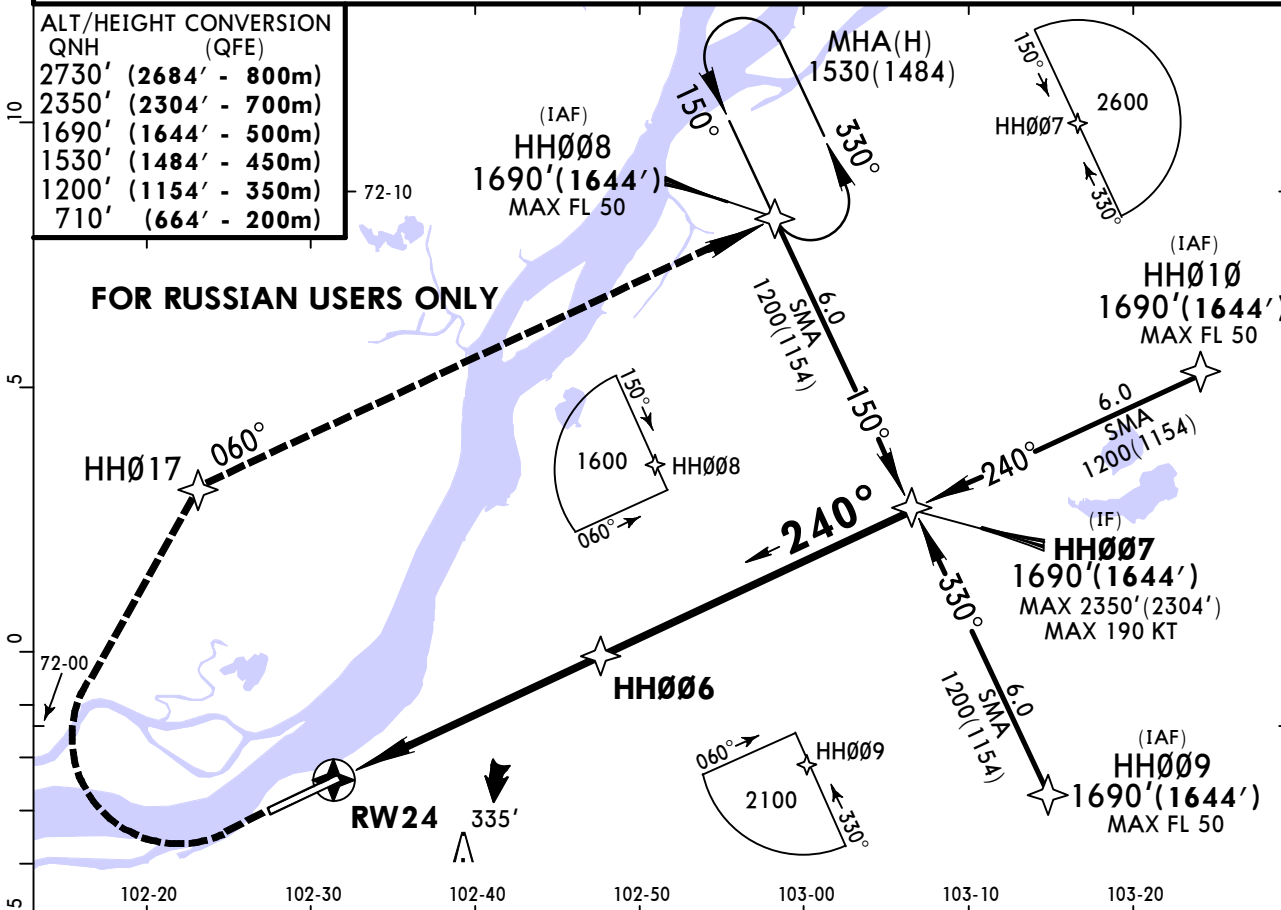
**UOHH/HTG
KHATANGA**

JEPPESEN
16 JUN 17 **(12-2)** **Eff 22 Jun**

**KHATANGA, RUSSIA
RNAV (GNSS) Rwy 24**

*KHATANGA Vyshka (TWR)					TAA 25 NM IAF/IF
118.1 Russian only					
RNAV	Final Apch Crs 240°	Procedure Alt HH006 1690'(1644')	LNAV MDA(H) 460'(414')	Apt Elev 98' Rwy 46'	
MISSED APCH: Climb STRAIGHT AHEAD to 710'(664'), then turn RIGHT to HH017, then turn RIGHT to HH008 climbing to 1690'(1644') or above.					
Alt Set: MM (hPa on req)		QNH on req (QFE)		Trans level: FL 40	
1. GNSS required.		2. RNP approach.		Trans alt: 2730' (2684')	

ALT/HEIGHT CONVERSION	
QNH	(QFE)
2730' (2684' - 800m)	
2350' (2304' - 700m)	
1690' (1644' - 500m)	
1530' (1484' - 450m)	
1200' (1154' - 350m)	
710' (664' - 200m)	



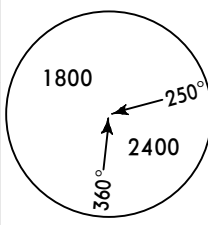
TO DISPL THR	0	5.6	12.1			
Gnd speed-Kts	70	90	100	120	140	160
Descent Angle	2.70°	334	430	478	573	764
MAP at RW24						

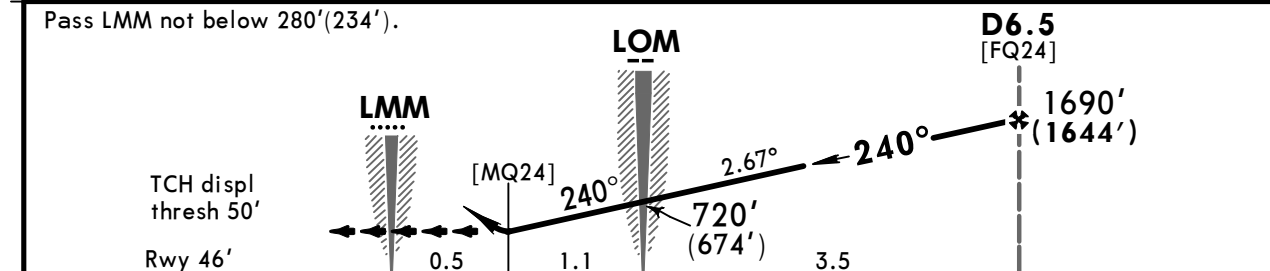
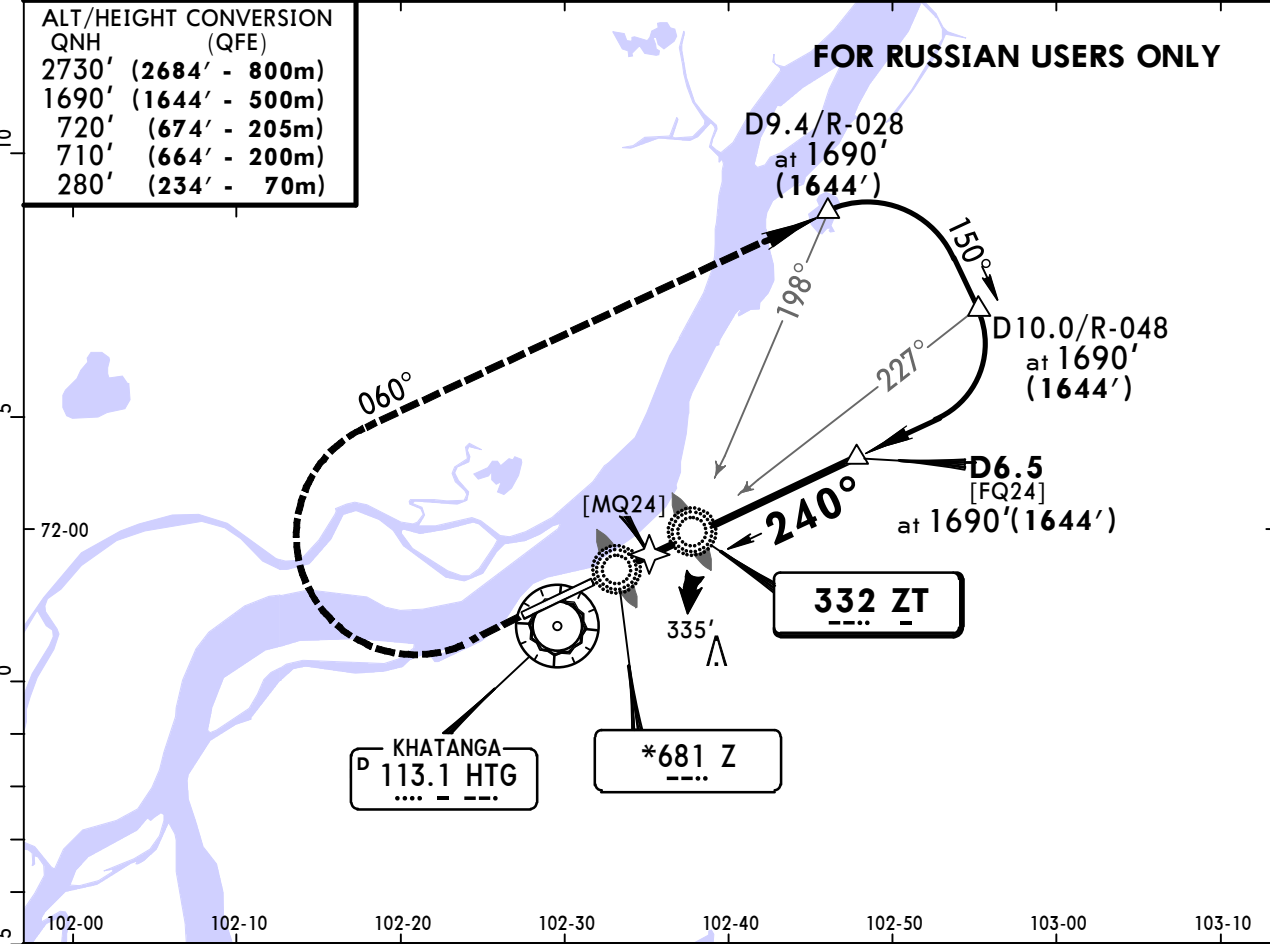
STRAIGHT-IN LANDING RWY 24			CIRCLE-TO-LAND	
LNAV				
MDA(H) 460'(414')				
			ALS out	
A			Max Kts	MDA(H)
B	1600m		100	530'(432') 1600m
C	2000m		135	610'(512') 1600m
D			180	740'(642') 2800m
			205	810'(712') 3600m

UOHH/HTG
KHATANGA

JEPPESEN
16 JUN 17 **(16-1)** **Eff 22 Jun**

KHATANGA, RUSSIA
2 NDB Rwy 24

*KHATANGA Vyshka (TWR)					 <p>MSA HTG VOR within 27 NM</p>		
118.1 Russian only							
NDB ZT 332	Final Apch Crs 240°	Minimum Alt D6.5 1690'(1644')	MDA(H) Refer to Minimums	Apt Elev 98' Rwy 46'			
MISSED APCH: Climb to 710'(664'), then turn RIGHT onto 060° climbing to 1690'(1644'), then according to chart.							
Alt Set: MM (hPa on req)		QNH on req (QFE)		Trans level: FL 40		Trans alt: 2730' (2684')	



TO DISPL THR	0	0.6	1.1	2.2	3.5	ALS	710' (664')	060°	1690' (1644')
Gnd speed-Kts	70	90	100	120	140	160		RT	
Descent Angle	2.67°	331	425	472	567	661	756		

STRAIGHT-IN LANDING RWY 24	
2 NDB	
MDA(H) A: 380'(334') BCD: 400'(354')	
ALS out	
A	1600m
B	
C	2000m
D	

Chart changes since cycle 08-2019

ADD = added chart, REV = revised chart, DEL = deleted chart.

ACT	PROCEDURE IDENT	INDEX	REV DATE	EFF DATE
-----	-----------------	-------	----------	----------

KHATANGA, (KHATANGA - UOHH)

TERMINAL CHART CHANGE NOTICES

No Chart Change Notices for Airport UOHH