

## List of pages in this Trip Kit

Trip Kit Index

Airport Information For UNAA

Terminal Charts For UNAA

Revision Letter For Cycle 09-2019

Change Notices

Notebook

## General Information

Location: ABAKAN RUS  
ICAO/IATA: UNAA / ABA  
Lat/Long: N53° 44.4', E091° 23.1'  
Elevation: 830 ft

Airport Use: Public  
Daylight Savings: Not Observed  
UTC Conversion: -7:00 = UTC  
Magnetic Variation: 4.0° E

Fuel Types: Jet A-1  
Repair Types: Minor Airframe, Minor Engine  
Customs: Yes  
Airport Type: IFR  
Landing Fee: Yes  
Control Tower: Yes  
Jet Start Unit: No  
LLWS Alert: No  
Beacon: No

Sunrise: 2203 Z  
Sunset: 1339 Z

## Runway Information

Runway: 02  
Length x Width: 10663 ft x 148 ft  
Surface Type: asphalt  
TDZ-Elev: 831 ft  
Lighting: Edge, ALS  
Displaced Threshold: 1614 ft

Runway: 20  
Length x Width: 10663 ft x 148 ft  
Surface Type: asphalt  
TDZ-Elev: 824 ft  
Lighting: Edge, ALS  
Displaced Threshold: 794 ft

## Communication Information

ATIS: 126.200 Non-English  
Abakan Start Tower: 129.000 Secondary  
Abakan Start Tower: 122.000  
Abakan Ground Ramp/Taxi: 129.000  
Abakan Radar: 134.300  
Abakan Radar: 129.000 Secondary

Abakan Transit Operations: 131.700

UNAA/ABA  
ABAKAN

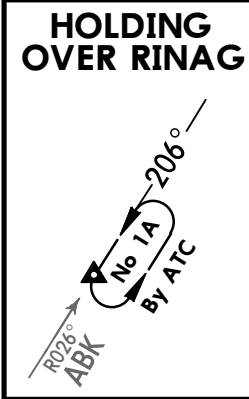
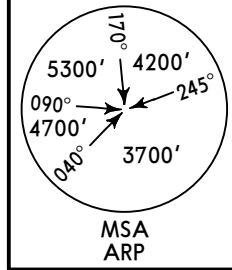
JEPPESEN  
13 APR 18 10-2 Eff 26 Apr

ABAKAN, RUSSIA

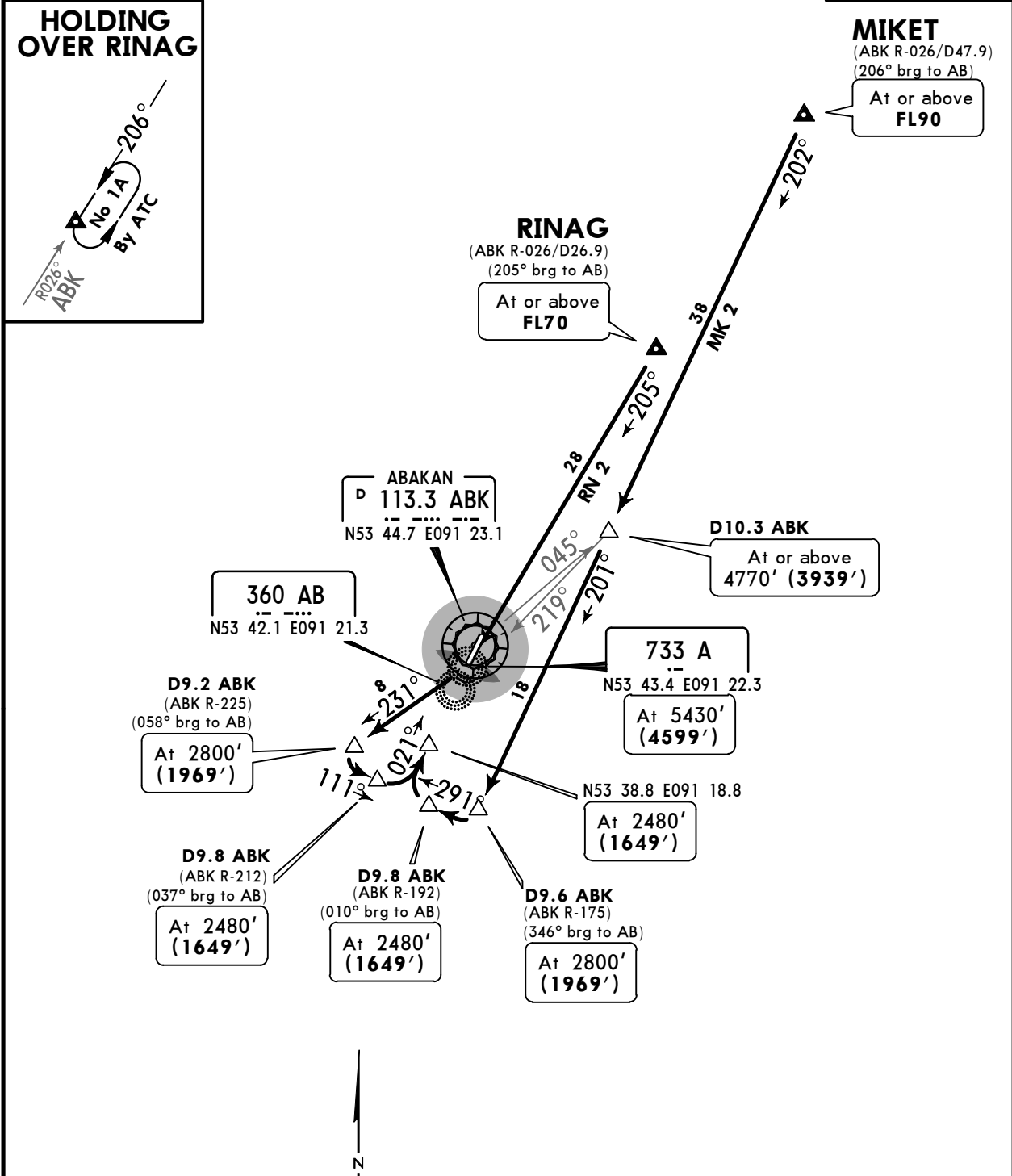
STAR

ATIS <b>126.2</b>	Apt Elev <b>830'</b>	Alt Set: MM (hPa on request) QNH on request (QFE) Trans level: FL70 FL80 if pressure is less than 724mm (965.3 hPa) Trans alt: 5430' (4599')
----------------------	-------------------------	---

**MK 2                      RN 2**  
BY ATC  
**RWY 02 ARRIVALS**



**MIKET**  
(ABK R-026/D47.9)  
(206° brg to AB)  
At or above  
**FL90**



ALT/HEIGHT CONVERSION	
QNH	(QFE)
5430'	(4599' - 1400m)
4770'	(3939' - 1200m)
2800'	(1969' - 600m)
2480'	(1649' - 500m)

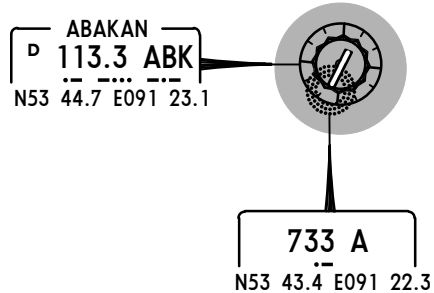
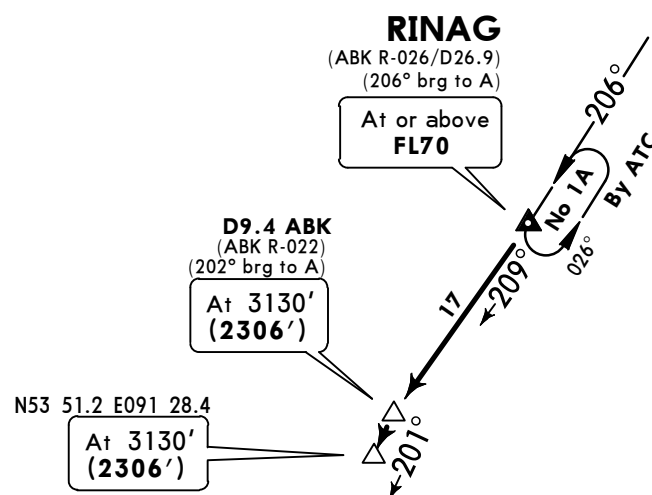
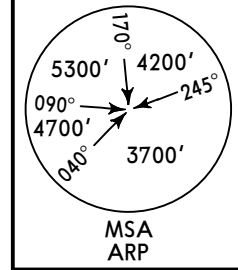
**UNAA/ABA**  
**ABAKAN**

**JEPPESEN**  
13 APR 18 **(10-2A)** Eff 26 Apr

**ABAKAN, RUSSIA**  
**STAR**

ATIS <b>126.2</b>	Apt Elev <b>830'</b>	Alt Set: MM (hPa on request) QNH on request (QFE) Trans level: FL70 FL80 if pressure is less than 724mm (965.3 hPa) Trans alt: 5430' ( <b>4606'</b> )
----------------------	-------------------------	--

**RN 4**  
**RWY 20 ARRIVAL**



ALT/HEIGHT CONVERSION	
QNH	(QFE)
5430'	(4606' - 1400m)
3130'	(2306' - 700m)

**UNAA/ABA**  
**ABAKAN**

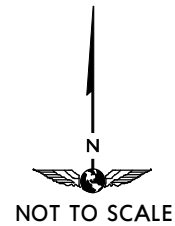
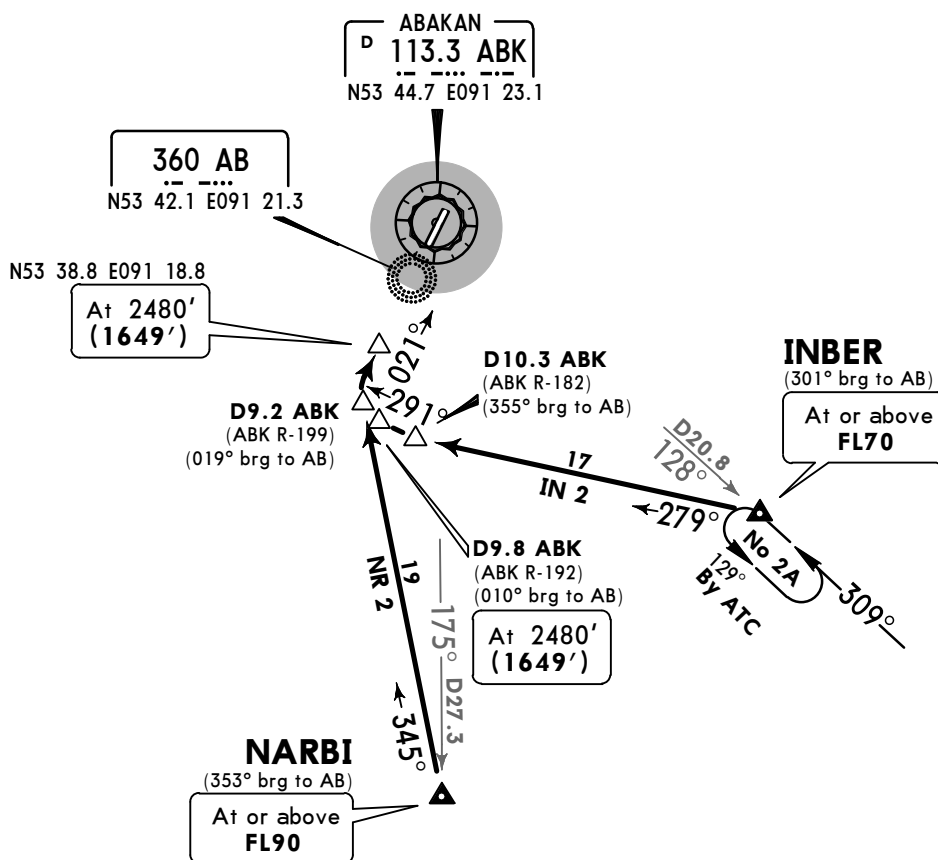
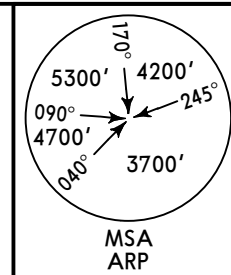
**JEPPESEN**  
13 APR 18 **(10-2B)** Eff 26 Apr

**ABAKAN, RUSSIA**

**STAR**

ATIS <b>126.2</b>	Apt Elev <b>830'</b>	Alt Set: MM (hPa on request) QNH on request (QFE) Trans level: FL70 FL80 if pressure is less than 724mm (965.3 hPa) Trans alt: 5430' (4599')
----------------------	-------------------------	---

**IN 2** **NR 2**  
BY ATC  
**RWY 02 ARRIVALS**



ALT/HEIGHT CONVERSION	
QNH	(QFE)
5430'	(4599' - 1400m)
2480'	(1649' - 500m)

**UNAA/ABA**  
**ABAKAN**

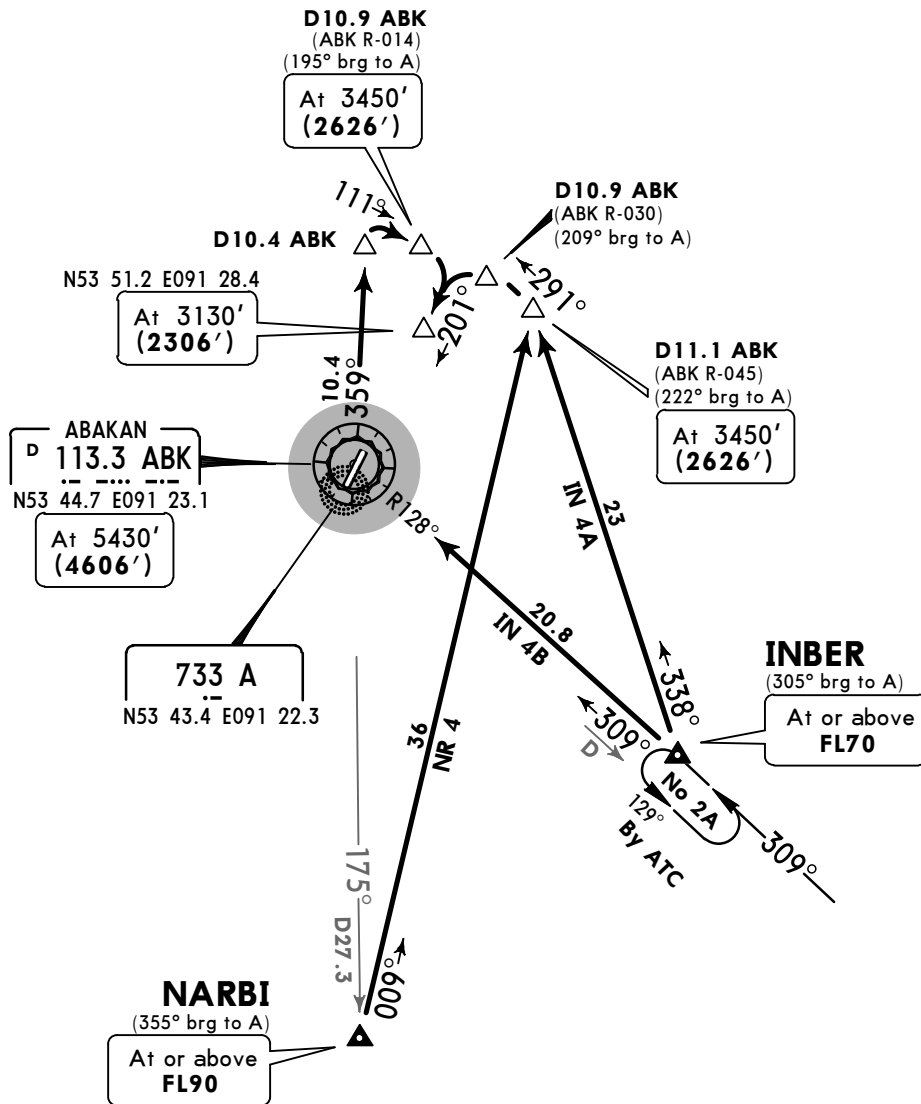
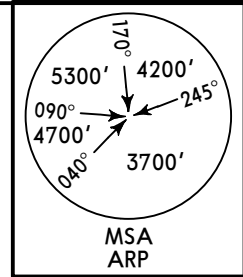
**JEPPESEN**  
13 APR 18 **10-2C** Eff 26 Apr

**ABAKAN, RUSSIA**

**STAR**

ATIS <b>126.2</b>	Apt Elev <b>830'</b>	Alt Set: MM (hPa on request) QNH on request (QFE) Trans level: FL70 FL80 if pressure is less than 724mm (965.3 hPa) Trans alt: 5430' (4606')
----------------------	-------------------------	---

**IN 4A                      IN 4B, NR 4**  
**BY ATC**  
**RWY 20 ARRIVALS**



ALT/HEIGHT CONVERSION	
QNH	(QFE)
5430'	(4606' - 1400m)
3450'	(2626' - 800m)
3130'	(2306' - 700m)

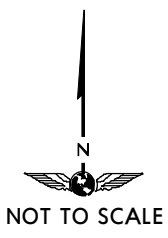
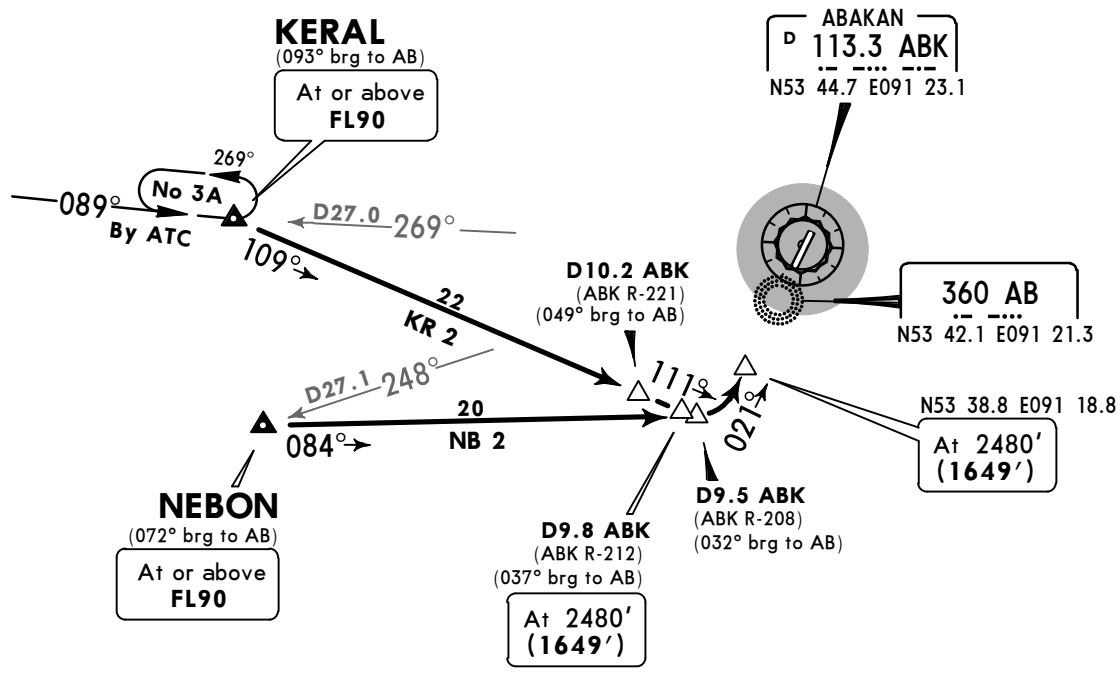
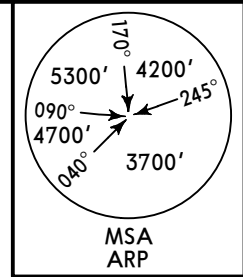
**UNAA/ABA**  
**ABAKAN**

**JEPPESEN**  
13 APR 18 **(10-2D)** Eff 26 Apr

**ABAKAN, RUSSIA**  
**STAR**

ATIS <b>126.2</b>	Apt Elev <b>830'</b>	Alt Set: MM (hPa on request) QNH on request (QFE) Trans level: FL70 FL80 if pressure is less than 724mm (965.3 hPa) Trans alt: 5430' (4599')
----------------------	-------------------------	---

**KR 2, NB 2**  
**RWY 02 ARRIVALS**



ALT/HEIGHT CONVERSION	
QNH	(QFE)
5430'	(4599' - 1400m)
2480'	(1649' - 500m)



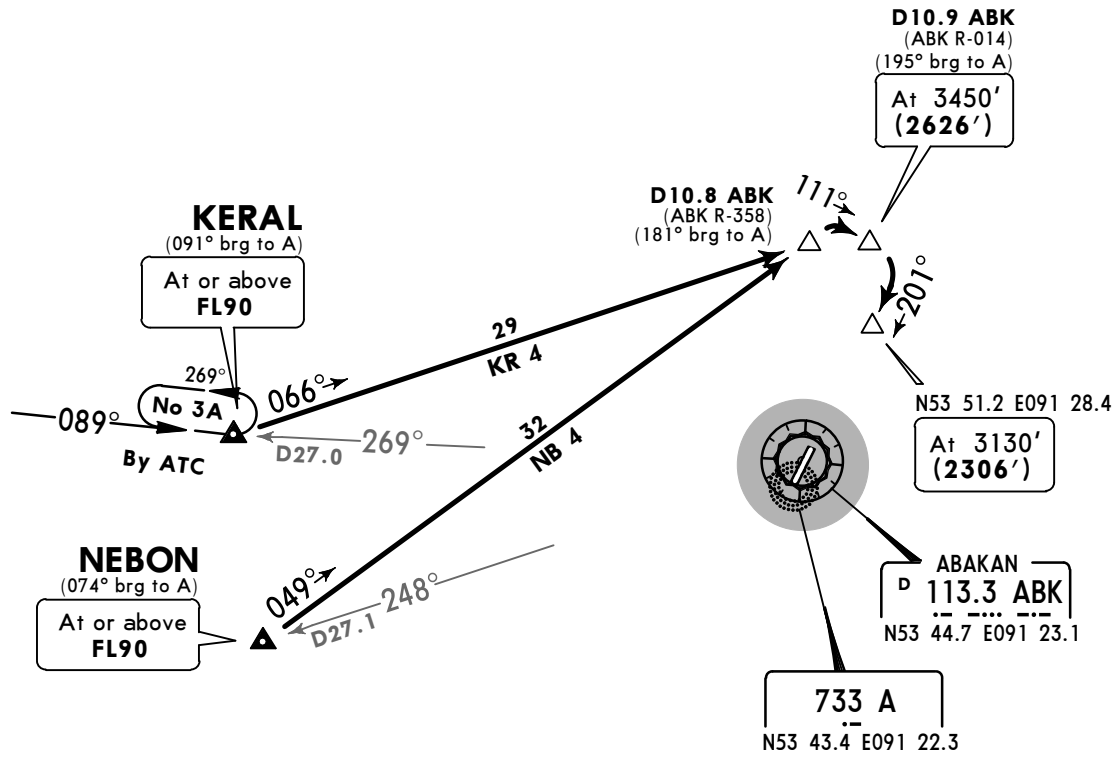
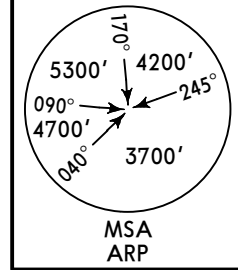
**UNAA/ABA**  
**ABAKAN**

**JEPPESEN**  
13 APR 18 **10-2E** Eff 26 Apr

**ABAKAN, RUSSIA**  
**STAR**

ATIS <b>126.2</b>	Apt Elev <b>830'</b>	Alt Set: MM (hPa on request) QNH on request (QFE) Trans level: FL70 FL80 if pressure is less than 724mm (965.3 hPa) Trans alt: 5430' (4606')
----------------------	-------------------------	---

**KR 4, NB 4**  
**RWY 20 ARRIVALS**



ALT/HEIGHT CONVERSION	
QNH	(QFE)
5430'	(4606' - 1400m)
3450'	(2626' - 800m)
3130'	(2306' - 700m)

**UNAA/ABA**  
**ABAKAN**

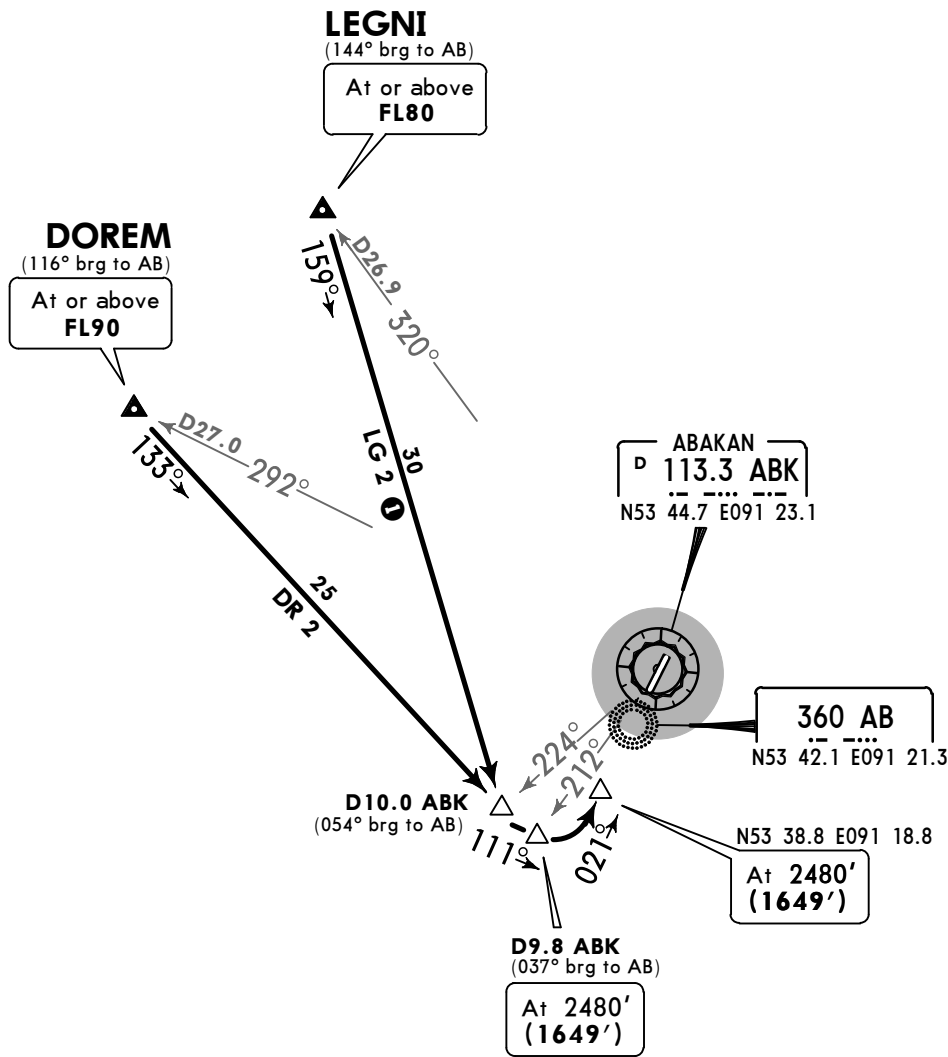
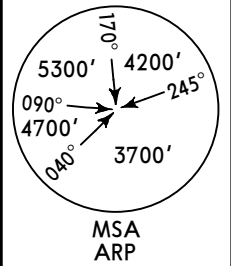
**JEPPESEN**  
13 APR 18 **10-2F** Eff 26 Apr

**ABAKAN, RUSSIA**  
**STAR**

ATIS <b>126.2</b>	Apt Elev <b>830'</b>	Alt Set: MM (hPa on request) QNH on request (QFE) Trans level: FL70 FL80 if pressure is less than 724mm (965.3 hPa) Trans alt: 5430' (4599')
----------------------	-------------------------	---

**DR 2, LG 2**  
**RWY 02 ARRIVALS**

**1** Only for Russian users of airspace.



ALT/HEIGHT CONVERSION	
QNH	(QFE)
5430'	(4599' - 1400m)
2480'	(1649' - 500m)

UNAA/ABA  
ABAKAN

JEPPESEN  
13 APR 18 (10-2G) Eff 26 Apr

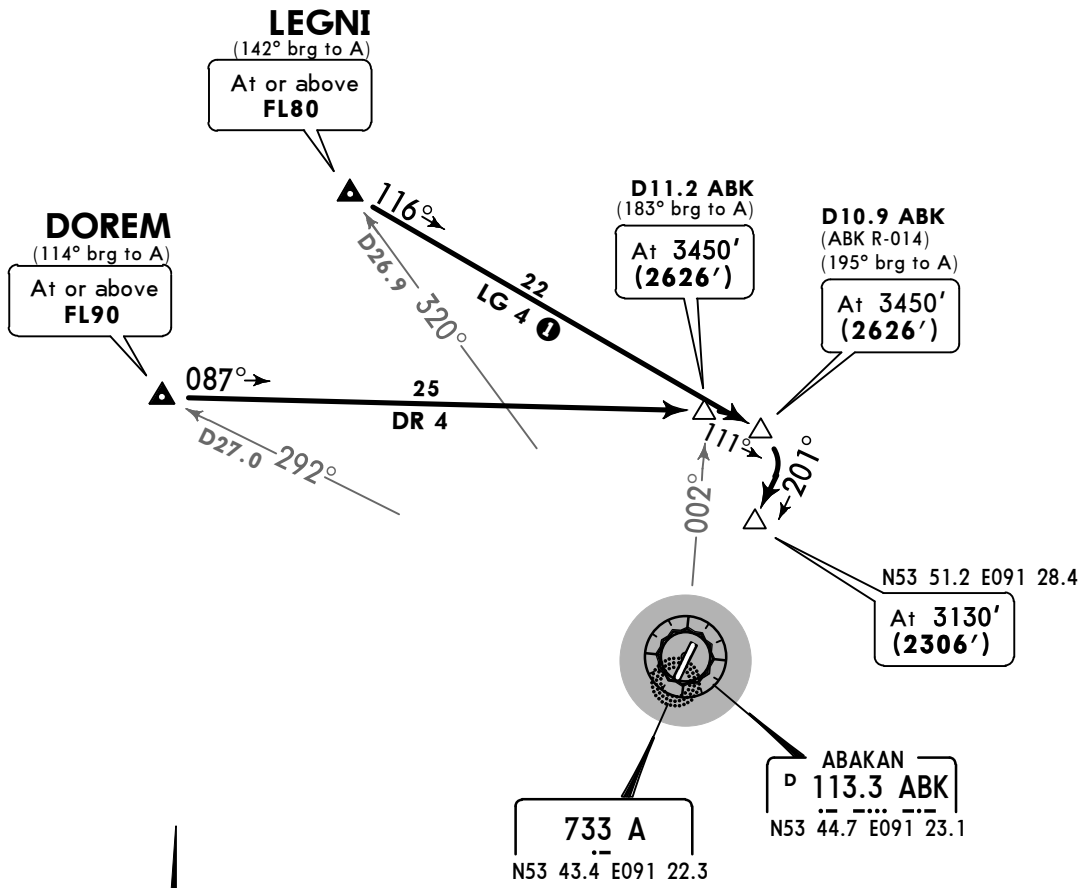
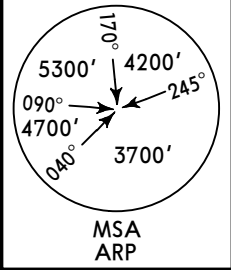
ABAKAN, RUSSIA

STAR

ATIS <b>126.2</b>	Apt Elev <b>830'</b>	Alt Set: MM (hPa on request) QNH on request (QFE) Trans level: FL70 FL80 if pressure is less than 724mm (965.3 hPa) Trans alt: 5430' (4606')
----------------------	-------------------------	---

**DR 4, LG 4  
RWY 20 ARRIVALS**

① Only for Russian users of airspace.



ALT/HEIGHT CONVERSION	
QNH	(QFE)
5430'	(4606' - 1400m)
3450'	(2626' - 800m)
3130'	(2306' - 700m)

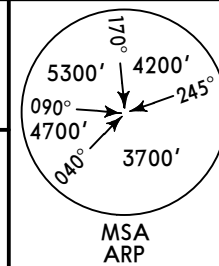
**UNAA/ABA**  
**ABAKAN**

**JEPPESEN**  
29 SEP 17 **10-3** Eff 12 Oct

**ABAKAN, RUSSIA**  
**SID**

Apt Elev  
**830'**

QNH on request (QFE)  
Trans level: FL70  
FL80 if pressure is less than 724mm (965.3 hPa)  
Trans alt: 5430' (4599')



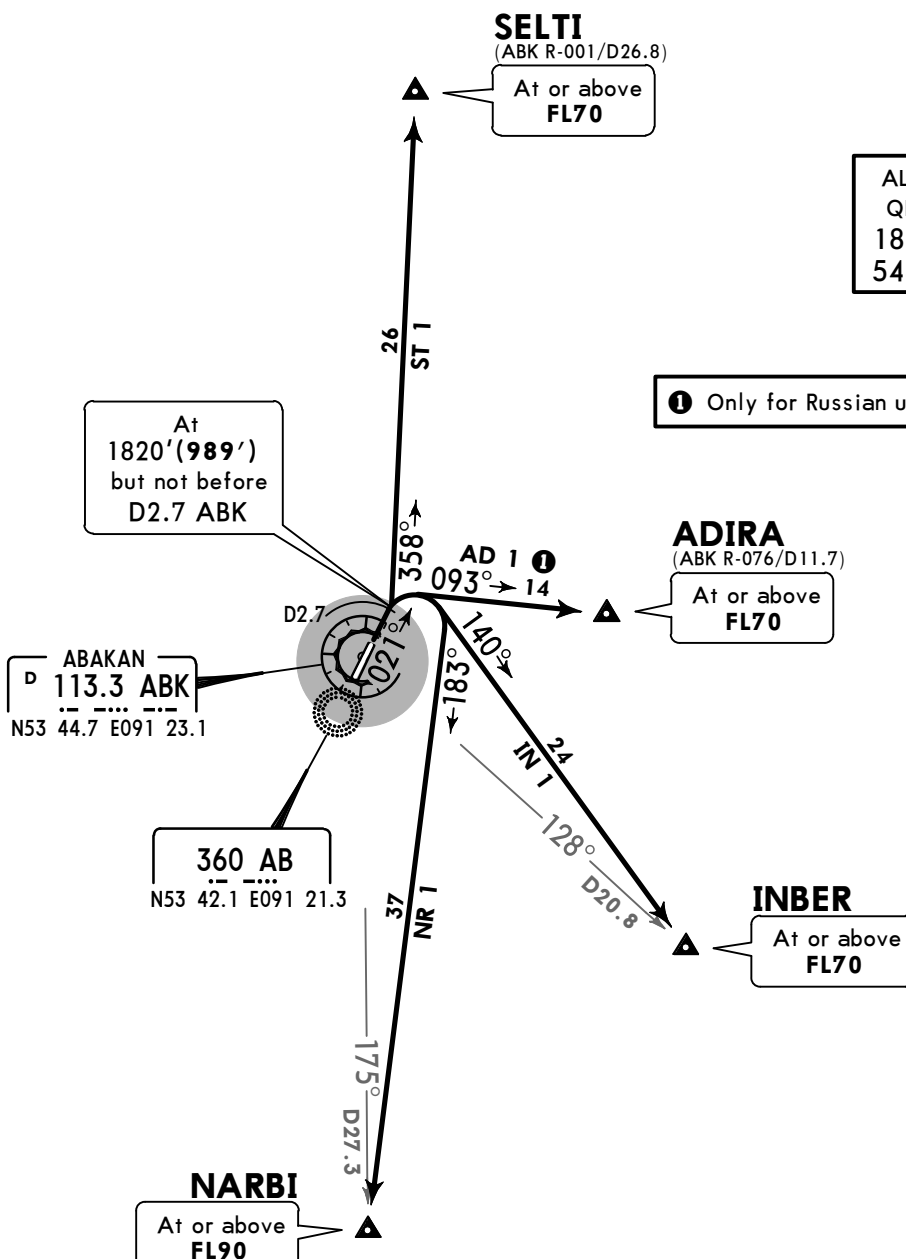
**AD 1, IN 1, ST 1**  
**NR 1**  
**BY ATC**  
**RWY 02 DEPARTURES**

**SEITI**  
(ABK R-001/D26.8)

At or above  
**FL70**

ALT/HEIGHT CONVERSION	
QNH	(QFE)
1820'	(989' - 300m)
5430'	(4599' - 1400m)

① Only for Russian users of airspace.



These SIDs require minimum climb gradients of

- AD 1: 7.5% to ADIRA.
- IN 1: 3.8% to INBER.
- ST 1: 3.8% to SELTI.

Gnd speed-KT	75	100	150	200	250	300
7.5% V/V (fpm)	570	760	1139	1519	1899	2279
3.8% V/V (fpm)	289	385	577	770	962	1155

If unable to comply, climb in the aerodrome circle via AB, height as directed by ATC.

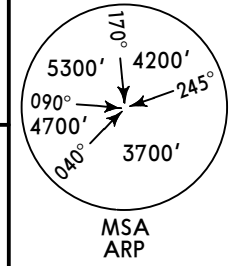
UNAA/ABA  
ABAKAN

JEPPESEN  
29 SEP 17 (10-3A) Eff 12 Oct

ABAKAN, RUSSIA  
SID

Apt Elev  
830'

QNH on request (QFE)  
Trans level: FL70  
FL80 if pressure is less than 724mm (965.3 hPa)  
Trans alt: 5430' (4606')

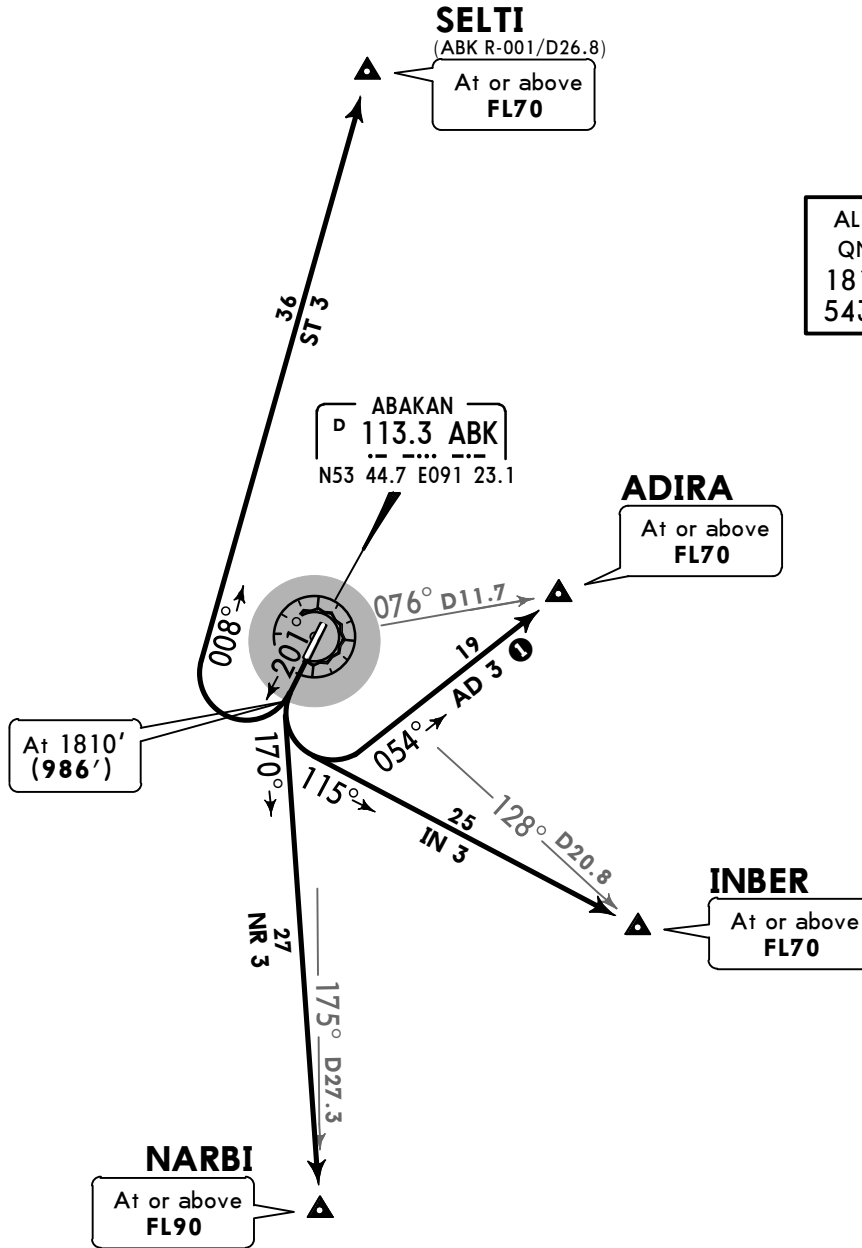


AD 3, IN 3, ST 3  
NR 3  
BY ATC  
RWY 20 DEPARTURES

**SEITI**  
(ABK R-001/D26.8)  
At or above  
FL70

ALT/HEIGHT CONVERSION

QNH	(QFE)
1810'	(986' - 300m)
5430'	(4606' - 1400m)



① Only for Russian users of airspace.

These SIDs require minimum climb gradients of

- AD 3: 4.6% to ADIRA.
- IN 3: 4.2% to INBER.
- NR 3: 5.2% to NARBI.

Gnd speed-KT	75	100	150	200	250	300
5.2% V/V (fpm)	395	527	790	1053	1317	1580
4.6% V/V (fpm)	349	466	699	932	1165	1398
4.2% V/V (fpm)	319	425	638	851	1063	1276



UNAA/ABA  
ABAKAN

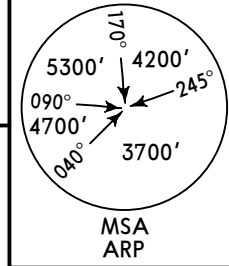
JEPPESEN  
29 SEP 17 (10-3B) Eff 12 Oct

ABAKAN, RUSSIA

SID

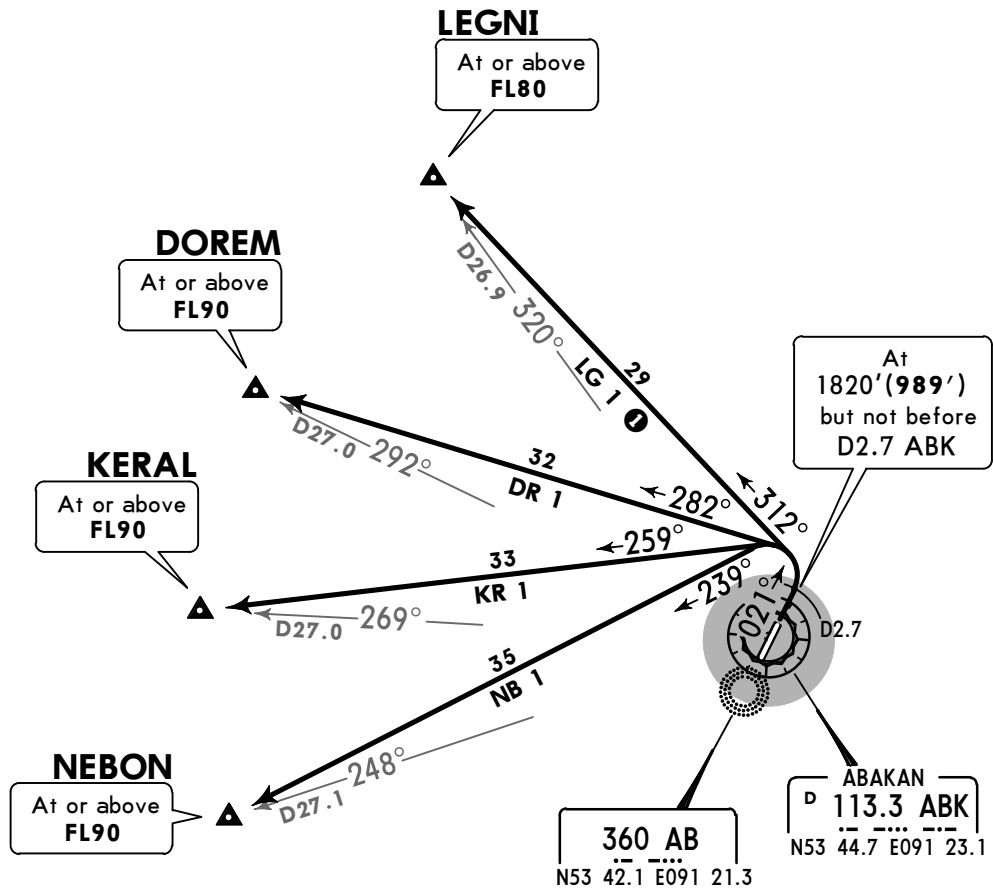
Apt Elev  
830'

QNH on request (QFE)  
Trans level: FL70  
FL80 if pressure is less than 724mm (965.3 hPa)  
Trans alt: 5430' (4599')



DR 1, KR 1, LG 1, NB 1  
RWY 02 DEPARTURES

① Only for Russian users of airspace.



These SIDs require a minimum climb gradient of

- DR 1: 4.2% to DOREM.
- KR 1: 4.2% to KERAL.
- LG 1: 4.2% to LEGNI.

Gnd speed-KT	75	100	150	200	250	300
4.2% V/V (fpm)	319	425	638	851	1063	1276

If unable to comply, climb in the aerodrome circle via AB, height as directed by ATC.

ALT/HEIGHT CONVERSION	
QNH	(QFE)
1820'	(989' - 300m)
5430'	(4599' - 1400m)

**UNAA/ABA**  
**ABAKAN**

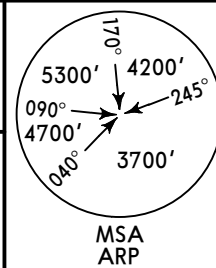
**JEPPESEN**  
29 SEP 17 **10-3C** Eff 12 Oct

**ABAKAN, RUSSIA**

**SID**

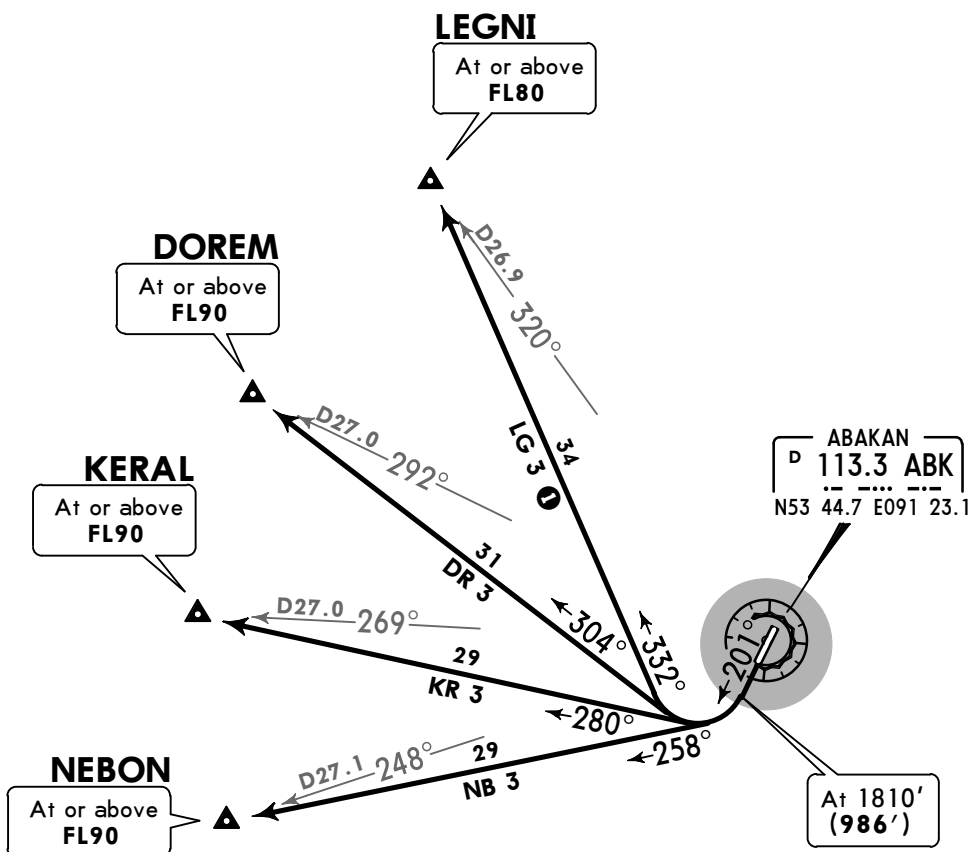
Apt Elev  
**830'**

QNH on request (QFE)  
Trans level: FL70  
FL80 if pressure is less than 724mm (965.3 hPa)  
Trans alt: 5430' (4606')



**DR 3, KR 3, LG 3, NB 3**  
**RWY 20 DEPARTURES**

**1** Only for Russian users of airspace.



These SIDs require minimum climb gradients of

**DR 3:** 4.2% to DOREM.  
**KR 3:** 4.6% to KERAL.  
**NB 3:** 5.0% to NEBON.

Gnd speed-KT	75	100	150	200	250	300
5.0% V/V (fpm)	380	506	760	1013	1266	1519
4.6% V/V (fpm)	349	466	699	932	1165	1398
4.2% V/V (fpm)	319	425	638	851	1063	1276

ALT/HEIGHT CONVERSION	
QNH	(QFE)
1810'	(986' - 300m)
5430'	(4606' - 1400m)

**UNAA/ABA**

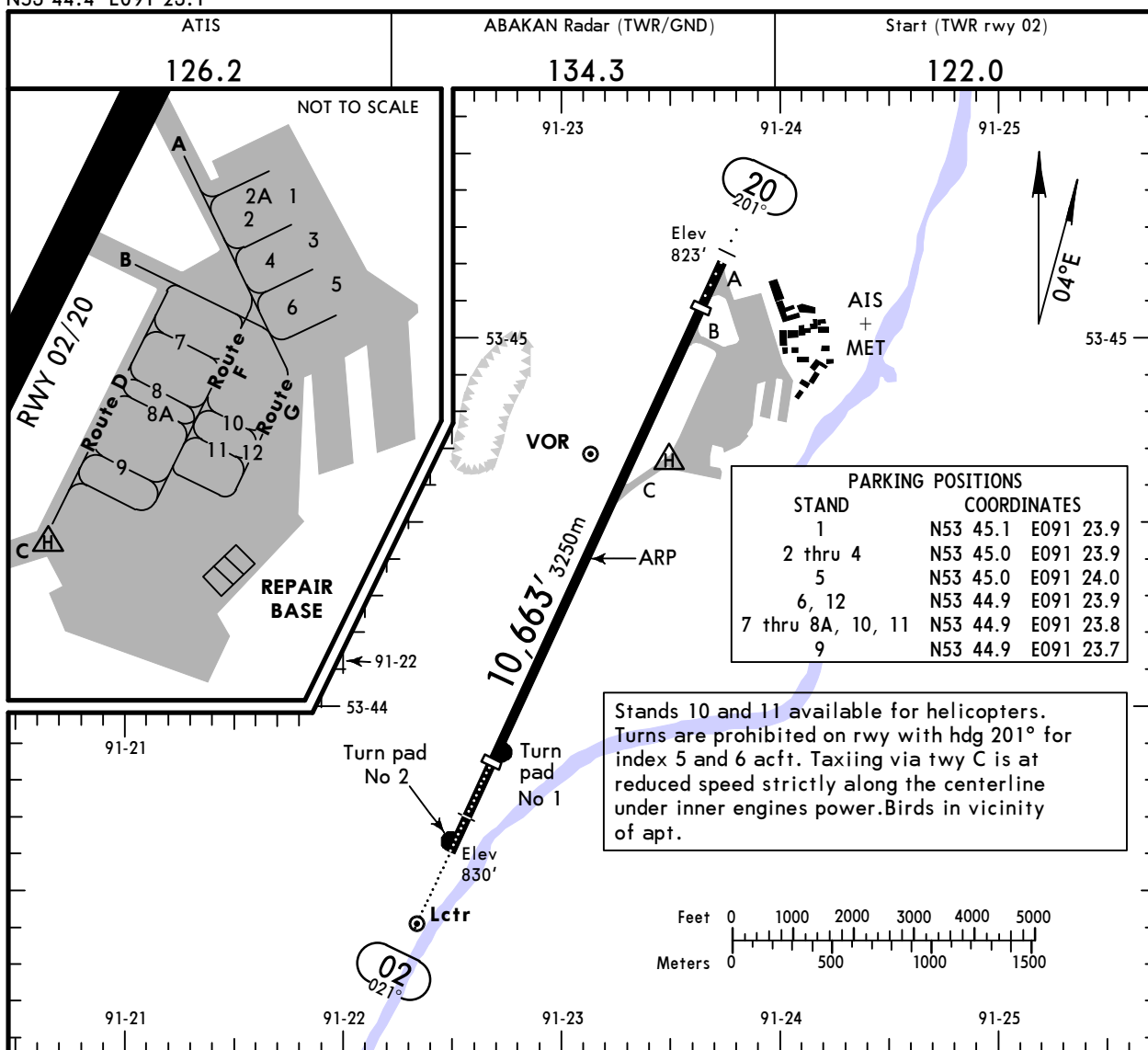
Apt Elev **830'**  
N53 44.4 E091 23.1

**JEPPesen**

6 JUL 18 (10-9) Eff 19 Jul

**ABAKAN, RUSSIA**

**ABAKAN**



**ADDITIONAL RUNWAY INFORMATION**

RWY				USABLE LENGTHS		TAKE-OFF	WIDTH
	HIRL (60m)	HIALS	PAPI-L (2.67°)	Threshold	Glide Slope		
02	HIRL (60m)	HIALS	PAPI-L (2.67°)	RVR 9049' 2758m	8321' 2536m		148'
20	HIRL (60m)	ALS	PAPI-L (3.17°)	RVR 9869' 3008m	8898' 2712m	①	45m

**① TAKE-OFF RUN AVAILABLE**

**RWY 20:**

From rwy head 10,663' (3250m)  
twy B int 9416' (2870m)

**LOW VISIBILITY PROCEDURES (LVP)**

When RVR is 550m or less, LVP are in progress.

ATC will inform pilots using phraseology: "LVP in progress. Check your minimum."

The flight crew is responsible for rwy incursion and non-adherence of the assigned routes on the manoeuvring area.

During LVP the following is prohibited:

- take-off not from rwy extremity.
- take-off without stop at the line-up position after acft enter the rwy.

**TAKE-OFF**

**AIR CARRIER (JAA)**

**All Rwys**

	<b>LVP must be in force</b> RCLM (DAY only) or RL	RCLM (DAY only) or RL
A		
B	250m	400m
C		
D	300m	



UNAA/ABA



**Standard**  
**ABAKAN, RUSSIA**  
**ABAKAN**

STRAIGHT-IN RWY		A	B	C	D
<b>02</b>	ILS	<b>1030'</b> (200')	<b>1030'</b> (200')	<b>1030'</b> (200')	<b>1030'</b> (200')
	FULL	<b>R550m</b>	<b>R550m</b>	<b>R550m</b>	<b>R550m</b>
	Limited	R750m	R750m	R750m	R750m
	ALS out	R1200m	R1200m	R1200m	R1200m
	LOC	NOT AUTH	NOT AUTH	NOT AUTH	NOT AUTH
<b>20</b>	2 NDB ①	<b>1130'</b> (300')	<b>1160'</b> (330')	<b>1160'</b> (330')	<b>1160'</b> (330')
	ALS out	R1400m	R1500m	R1500m	R1500m
	ILS	<b>1023'</b> (200')	<b>1023'</b> (200')	<b>1023'</b> (200')	<b>1023'</b> (200')
<b>20</b>	ALS out	R1200m	R1200m	R1200m	R1200m
	LOC	NOT AUTH	NOT AUTH	NOT AUTH	NOT AUTH
	NDB ①②	<b>2160'</b> (1337')	<b>2160'</b> (1337')	<b>2160'</b> (1337')	<b>2160'</b> (1337')
	NDB ③	<b>2700'</b> (1877')	<b>2700'</b> (1877')	<b>2700'</b> (1877')	<b>2700'</b> (1877')

- ① Continuous Descent Final Approach.
- ② With D7.2 ABK.
- ③ W/o D7.2 ABK.

**TAKE-OFF RWY 02, 20**

LVP must be in Force			
	RCLM (DAY only) or RL	RCLM (DAY only) or RL	NIL (DAY only)
A	250m	400m	500m
B			
C			
D	300m		

# UNAA/ABA ABAKAN

**JEPPESEN**

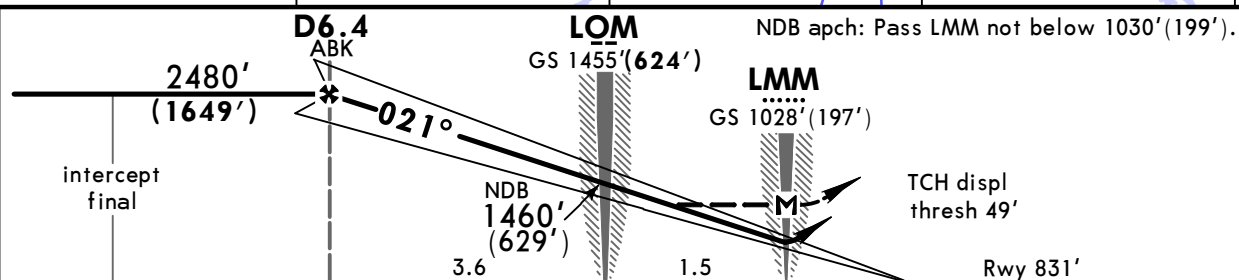
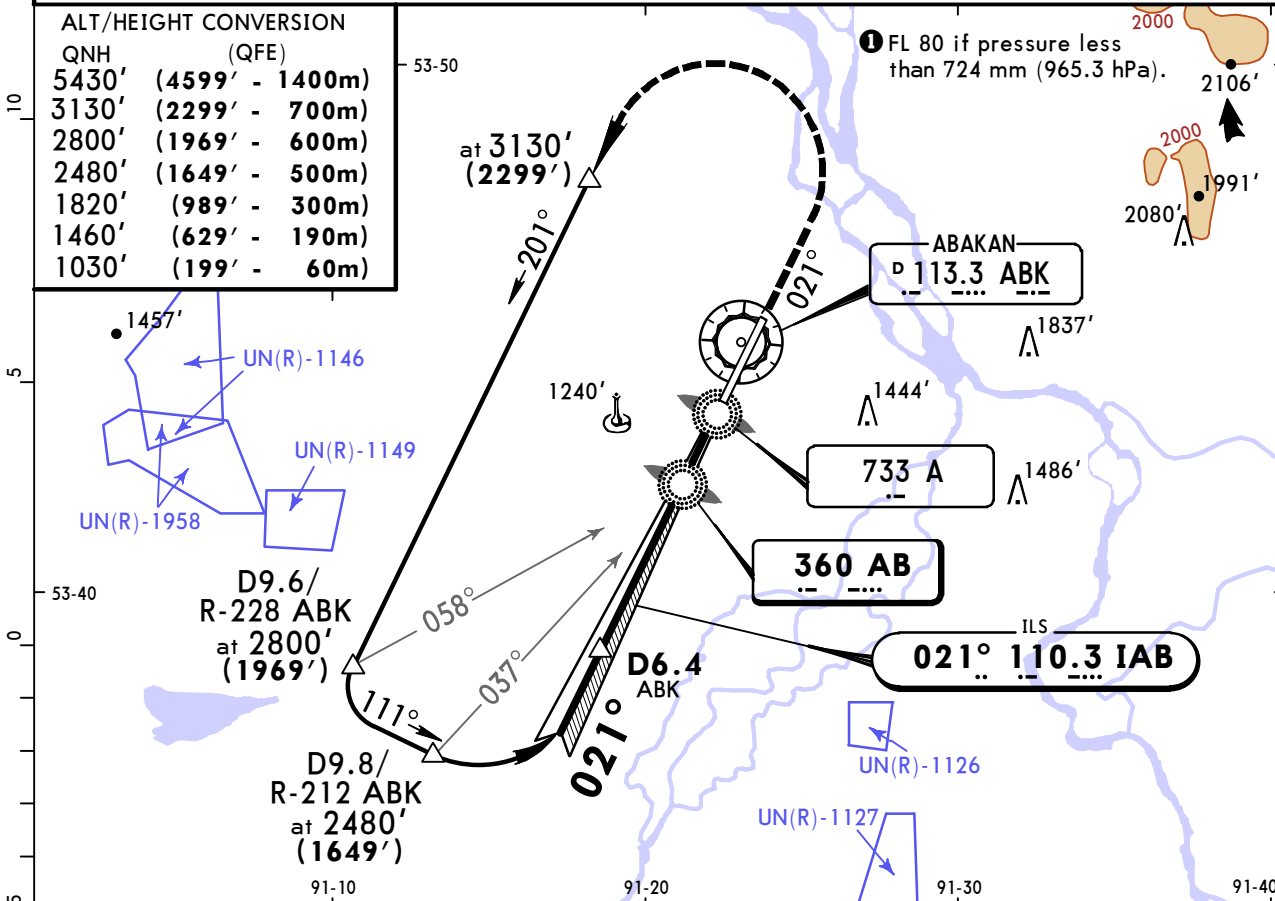
# ABAKAN, RUSSIA ILS or 2 NDB Rwy 02

6 JUL 18  
Eff 19 Jul (11-1)

ATIS <b>126.2</b>		ABAKAN Radar (TWR) <b>134.3</b>		ABAKAN Start (TWR) <b>122.0</b>		Ground <b>134.3</b>	
LOC IAB <b>110.3</b>	Final Apch Crs <b>021°</b>	GS LOM <b>1455' (624')</b>	ILS DA(H) <b>1031' (200')</b>		Apt Elev 830' Rwy 831'		
NDB AB <b>360</b>		NDB Minimum Alt <b>D6.4 ABK 2480' (1649')</b>	NDB MDA(H) Refer to Minimums				
<b>MISSED APCH:</b> Climb on 021° to 1820' (989'), then turn LEFT onto 201° climbing to 3130' (2299'), then according to chart.							

Alt Set: MM (hPa on req) QNH on req (QFE) Trans level: FL 70 1 Trans alt: 5430' (4599')

QNH	(QFE)
5430' (4599' - 1400m)	
3130' (2299' - 700m)	
2800' (1969' - 600m)	
2480' (1649' - 500m)	
1820' (989' - 300m)	
1460' (629' - 190m)	
1030' (199' - 60m)	



TO DISPLACED THRESHOLD										
Gnd speed-Kts	70	90	100	120	140	160	HIALS	1820' (989')	201°	3130' (2299')
ILS GS or NDB Desc Angle	2.67°	331	425	472	567	661	PAPI	on 021°	LT	
MAP at LMM										

STRAIGHT-IN LANDING RWY 02					
ILS		LOC (GS out)		NDB	
DA(H) 1031' (200')				A: 1140' (309')	
FULL		ALS out		BCD: 1160' (329')	
A					
B	RVR 720m	1200m	NOT AUTH	1200m	RVR 1500m
C	VIS 800m				VIS 1600m
D				RVR 1500m	VIS 1600m

PANS OPS

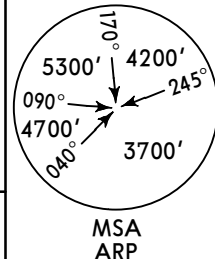
# UNAA/ABA ABAKAN



6 JUL 18 (11-2) Eff 19 Jul

# ABAKAN, RUSSIA ILS or NDB Rwy 20

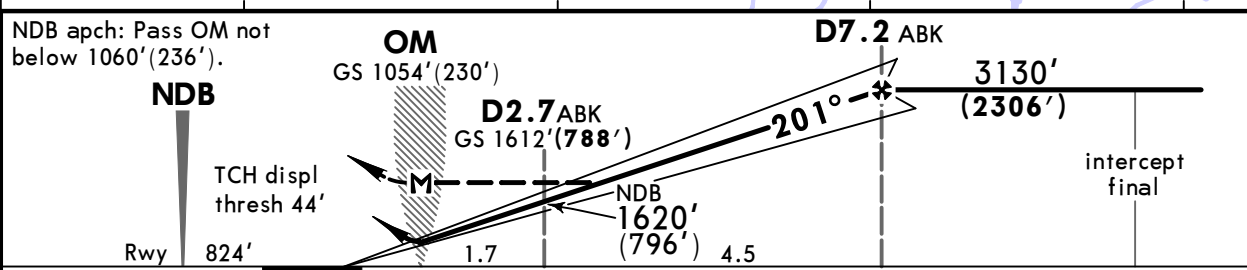
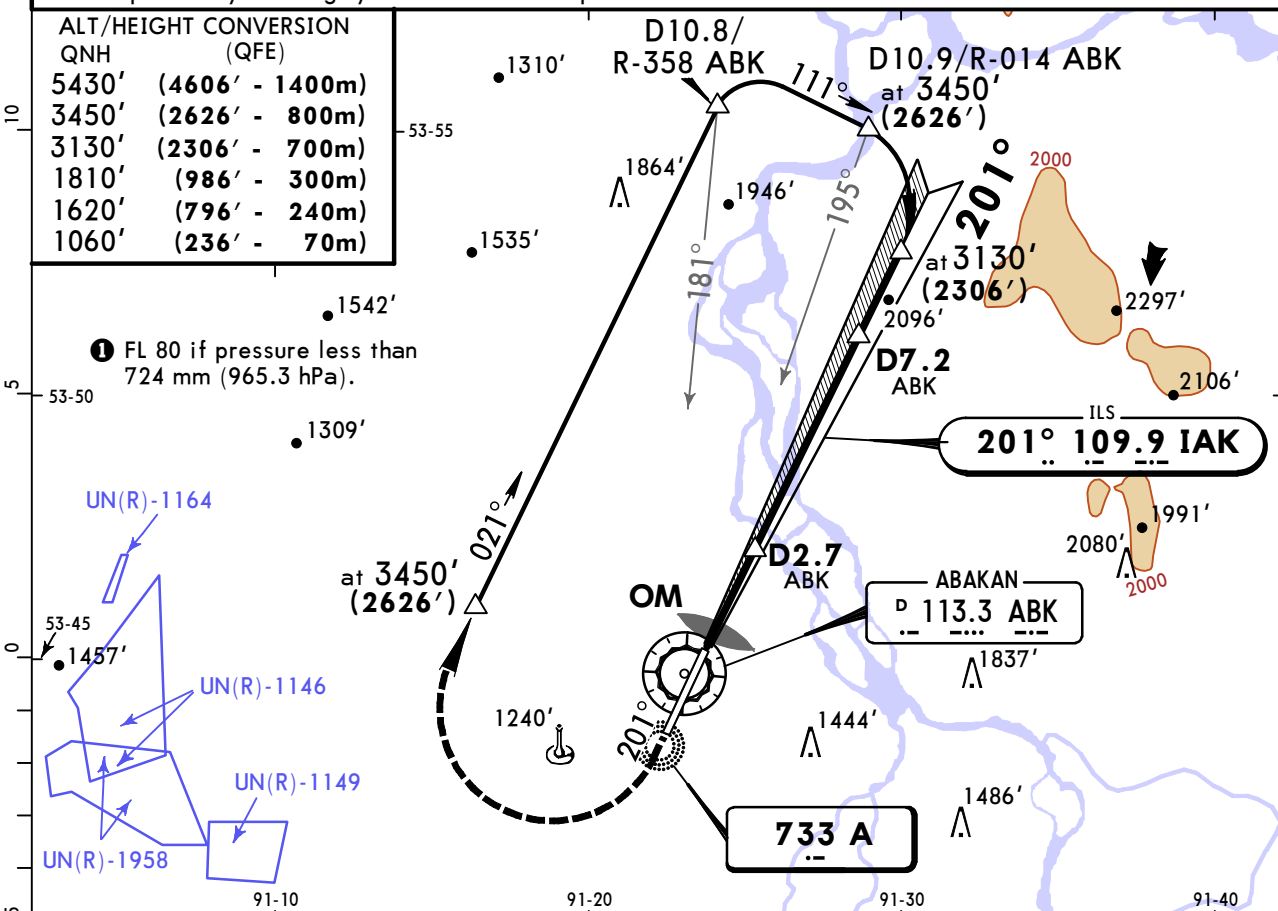
ATIS <b>126.2</b>		ABAKAN Radar (TWR) <b>134.3</b>		Ground <b>134.3</b>
LOC IAK <b>109.9</b>	Final ApcH Crs <b>201°</b>	GS <b>D2.7 ABK</b> <b>1612'(788')</b>	ILS DA(H) <b>1024'(200')</b>	Apt Elev 830' Rwy 824'
NDB A <b>733</b>		NDB Minimum Alt <b>D7.2 ABK</b> <b>3130'(2306')</b>	NDB MDA(H) (CONDITIONAL) <b>2160'(1336')</b>	



**MISSED APCH:** Climb on 201° to 1810'(986'), then turn RIGHT onto 021° climbing to 3450'(2626').

Alt Set: MM (hPa on req) QNH on req (QFE) Trans level: FL 70 Trans alt: 5430' (4606')  
Ground proximity warning system activation is possible on final.

ALT/HEIGHT CONVERSION	
QNH	(QFE)
5430'	(4606' - 1400m)
3450'	(2626' - 800m)
3130'	(2306' - 700m)
1810'	(986' - 300m)
1620'	(796' - 240m)
1060'	(236' - 70m)



Gnd speed-Kts	70	90	100	120	140	160	ALS	1810'(986')	on 201°	021°	3450'(2626')
ILS GS or NDB Desc Angle	3.17°	393	505	561	673	785	897	PAPI		RT	
MAP at MKR											

STRAIGHT-IN LANDING RWY 20			
ILS		LOC (GS out)	NDB
DA(H) 1024'(200')		with FAF MDA(H) 2160'(1336')	w/o FAF MDA(H) 2700'(1876')
FULL	ALS out		ALS out
A	1200m	NOT AUTH	RVR 1800m VIS 2000m
B			2400m
C			
D			4800m

CHANGES: Fix designation.

## Chart changes since cycle 08-2019

ADD = added chart, REV = revised chart, DEL = deleted chart.

ACT	PROCEDURE IDENT	INDEX	REV DATE	EFF DATE
-----	-----------------	-------	----------	----------

**ABAKAN, (ABAKAN - UNAA)**

## **TERMINAL CHART CHANGE NOTICES**

**No Chart Change Notices for Airport UNAA**