

List of pages in this Trip Kit

Trip Kit Index

Airport Information For ULWC

Terminal Charts For ULWC

Revision Letter For Cycle 09-2019

Change Notices

Notebook

General Information

Location: CHEREPOVETS RUS
ICAO/IATA: ULWC / CEE
Lat/Long: N59° 16.6', E038° 01.1'
Elevation: 377 ft

Airport Use: Public
Daylight Savings: Not Observed
UTC Conversion: -3:00 = UTC
Magnetic Variation: 13.0° E

Fuel Types: Jet A-1
Customs: Yes
Airport Type: IFR
Landing Fee: Yes
Control Tower: Yes
Jet Start Unit: No
LLWS Alert: No
Beacon: No

Sunrise: 0108 Z
Sunset: 1741 Z

Runway Information

Runway: 03
Length x Width: 8278 ft x 138 ft
Surface Type: asphalt
TDZ-Elev: 361 ft
Lighting: Edge, ALS

Runway: 21
Length x Width: 8278 ft x 138 ft
Surface Type: asphalt
TDZ-Elev: 369 ft
Lighting: Edge, ALS

Communication Information

Cherepovets Tower: 119.200

**ULWC/CEE
CHEREP OVETS**

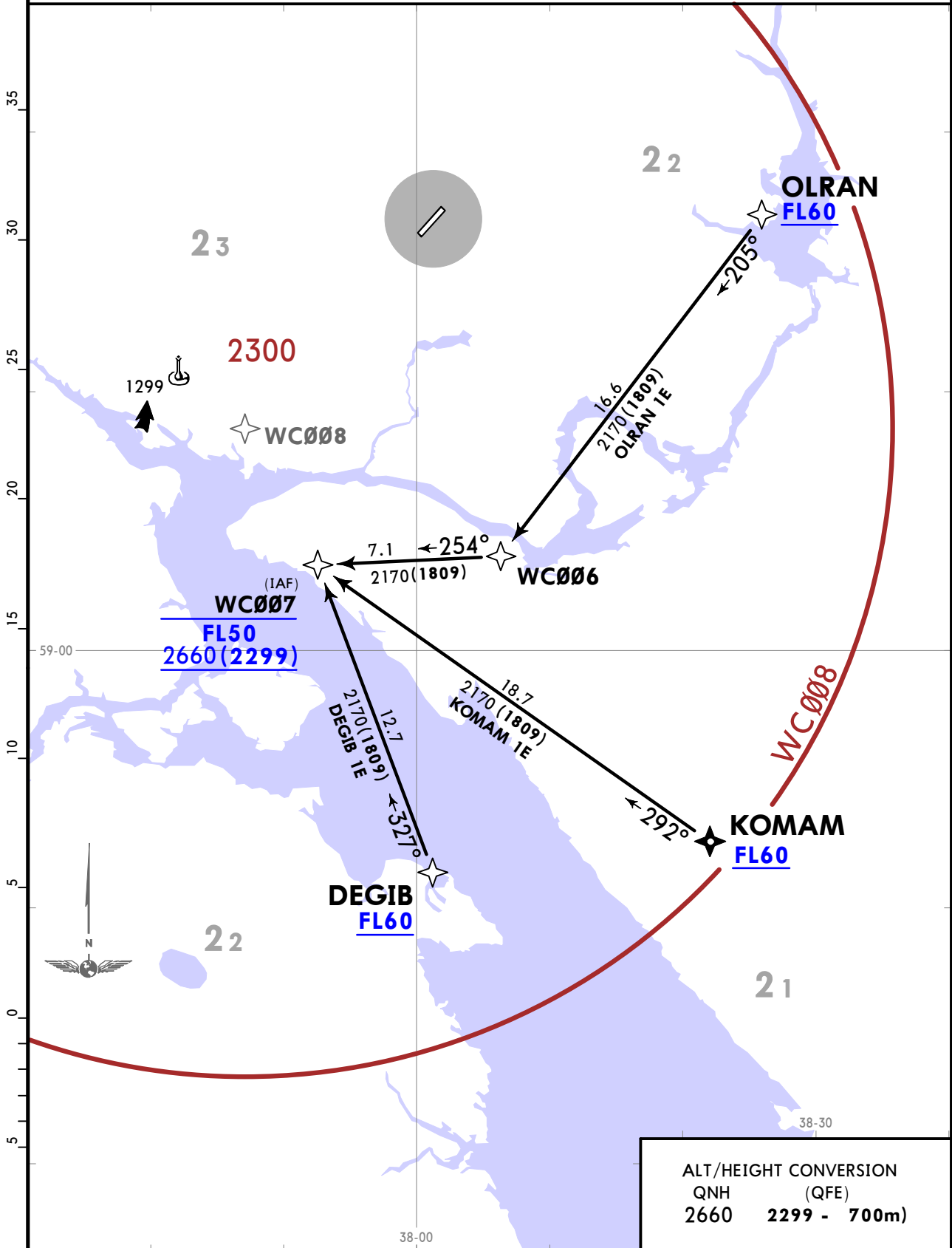
JEPPESEN
5 OCT 18 **10-2** **Eff 11 Oct**

CHEREP OVETS, RUSSIA
RNAV STAR

Apt Elev
377

Alt Set: MM (hPa on request) QNH on request (QFE)
Trans level: FL50
1. RNAV 1
2. GNSS

**DEGIB 1E [DEGI1E]
KOMAM 1E [KOMA1E]
OLRAN 1E [OLRA1E]
RWY 03 RNAV ARRIVALS**



ULWC/CEE
CHEREP OVETS

JEPPESEN
5 OCT 18 (10-2A) Eff 11 Oct

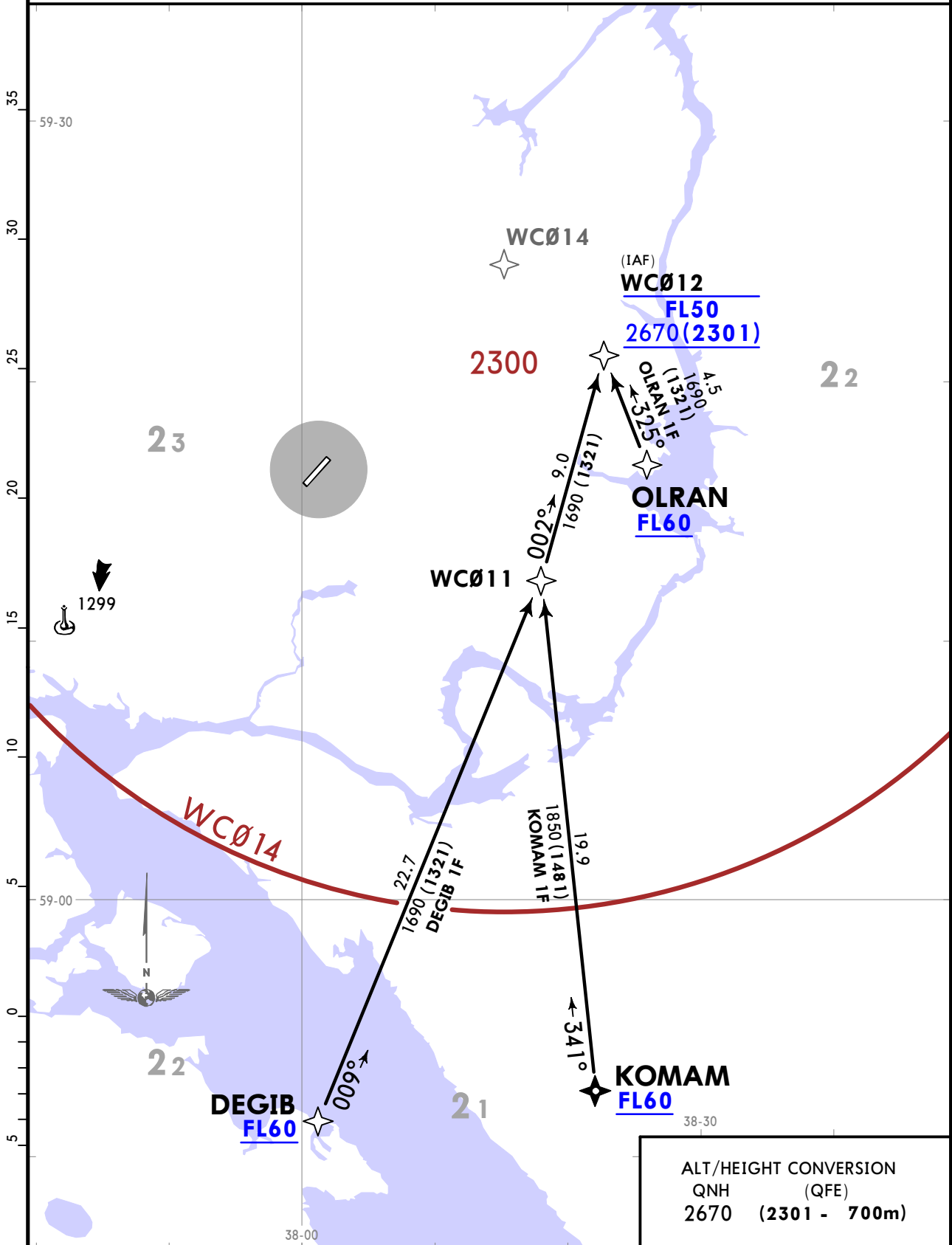
CHEREP OVETS, RUSSIA

RNAV STAR

Apt Elev
377

Alt Set: MM (hPa on request) QNH on request (QFE)
Trans level: FL50
1. RNAV 1
2. GNSS

DEGIB 1F [DEGI1F]
KOMAM 1F [KOMA1F]
OLRAN 1F [OLRA1F]
RWY 21 RNAV ARRIVALS

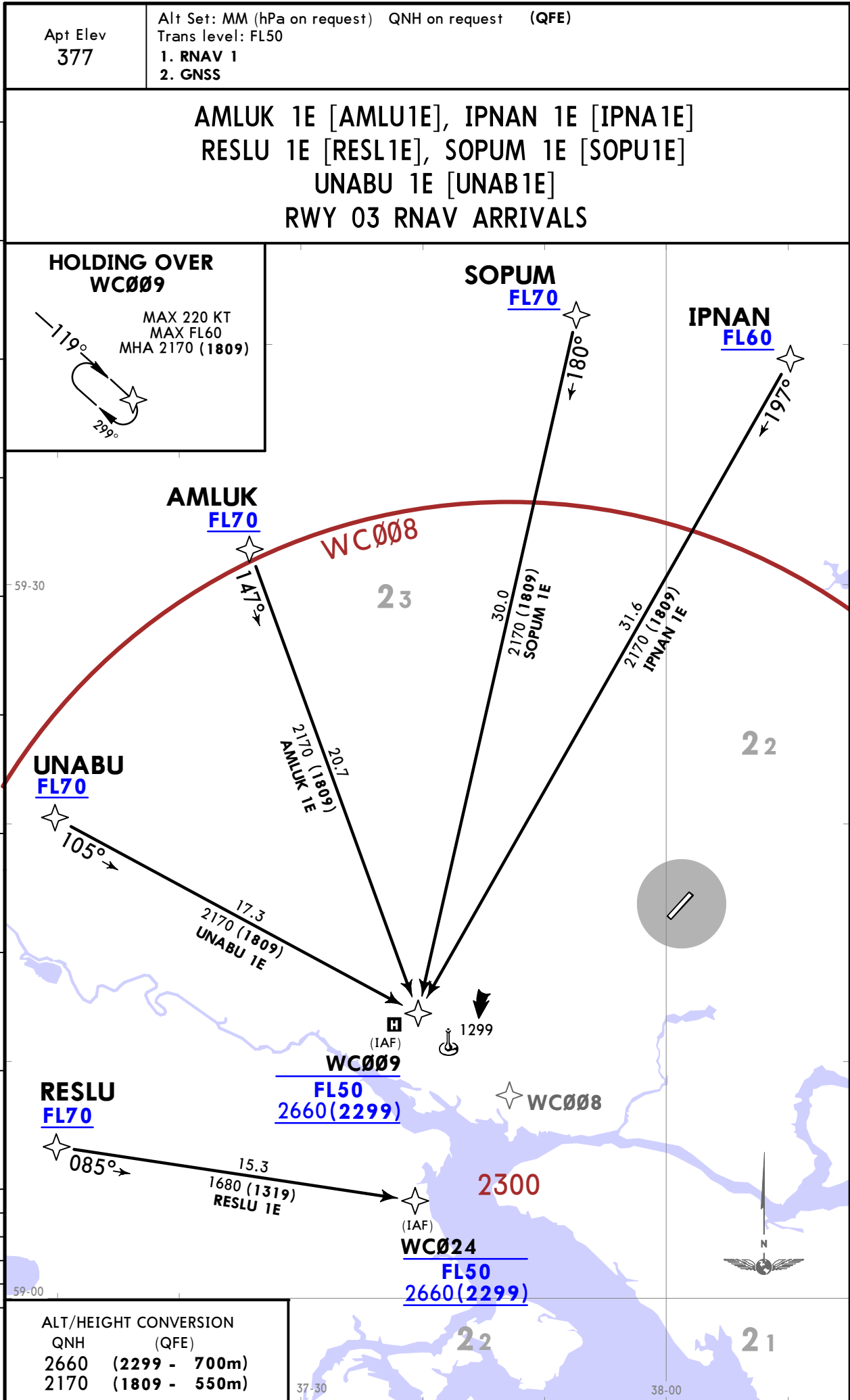


ALT/HEIGHT CONVERSION
QNH (QFE)
2670 (2301 - 700m)

**ULWC/CEE
CHEREPOVETS**

JEPPESEN
5 OCT 18 **(10-2B)** Eff 11 Oct

CHEREPOVETS, RUSSIA
RNAV STAR



**ULWC/CEE
CHEREP OVETS**

JEPPESEN 5 OCT 18 (10-2D) Eff 11 Oct

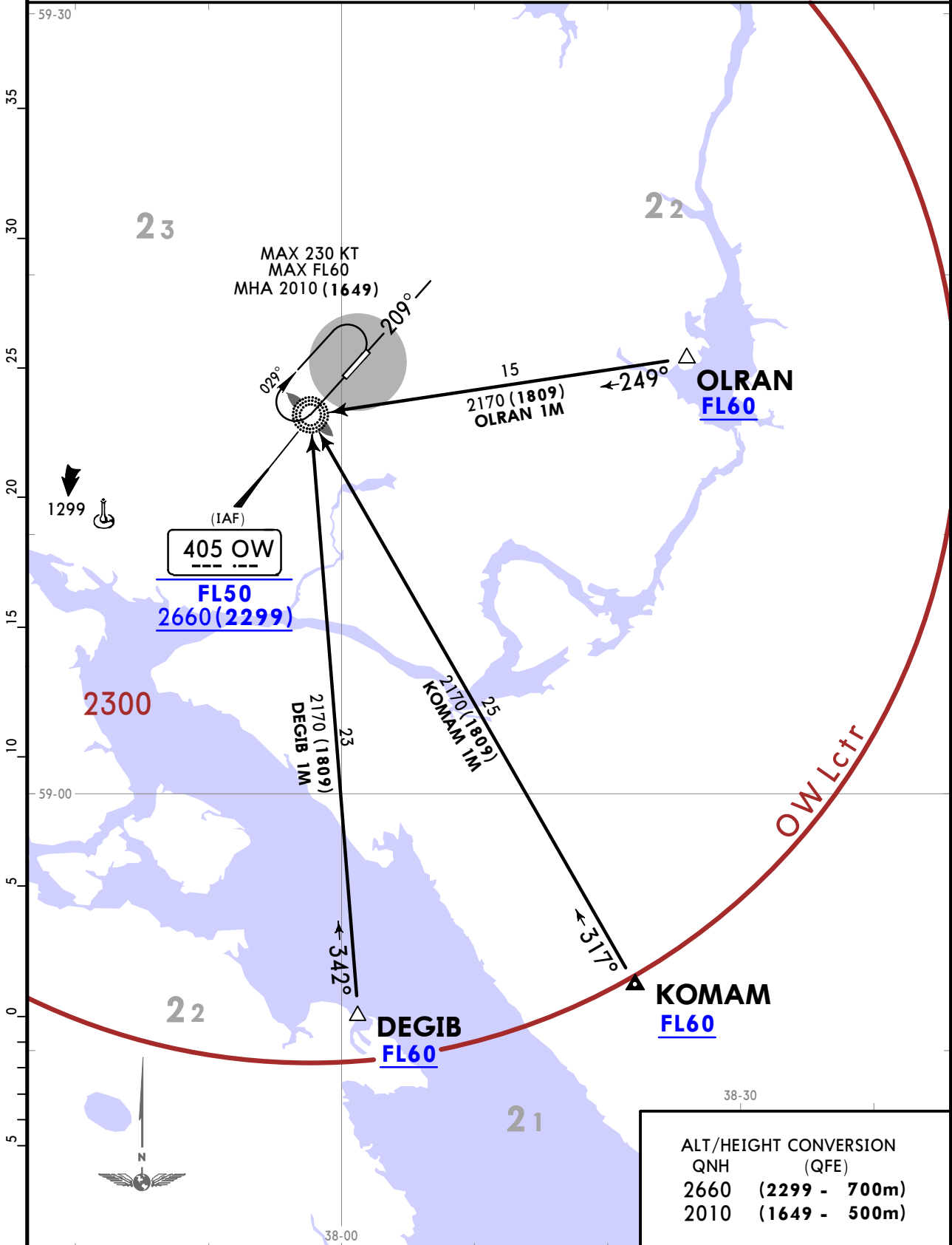
CHEREP OVETS, RUSSIA

STAR

Apt Elev
377

Alt Set: MM (hPa on request) QNH on request (QFE)
Trans level: FL50

**DEGIB 1M [DEGI1M]
KOMAM 1M [KOMA1M]
OLRAN 1M [OLRA1M]
RWY 03 ARRIVALS
RADAR CONTROL REQUIRED**



ALT/HEIGHT CONVERSION	
QNH	(QFE)
2660	(2299 - 700m)
2010	(1649 - 500m)

**ULWC/CEE
CHEREP OVETS**

JEPPESEN
5 OCT 18 **(10-2E)** Eff 11 Oct

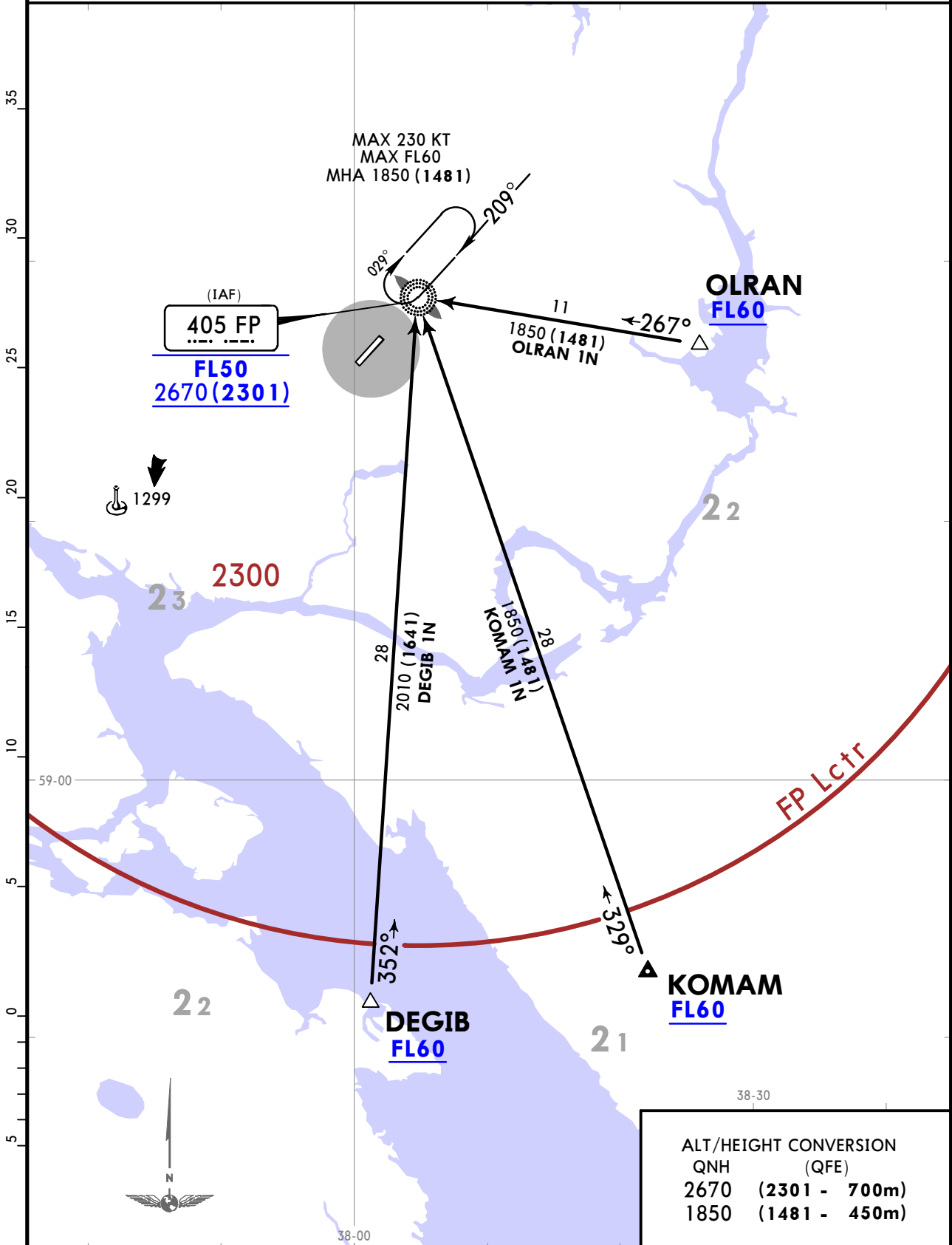
CHEREP OVETS, RUSSIA

STAR

Apt Elev
377

Alt Set: MM (hPa on request) QNH on request (QFE)
Trans level: FL50

**DEGIB 1N [DEGI1N]
KOMAM 1N [KOMA1N]
OLRAN 1N [OLRA1N]
RWY 21 ARRIVALS
RADAR CONTROL REQUIRED**



ULWC/CEE
CHEREP OVETS

JEPPESEN
5 OCT 18 **(10-2F)** Eff 11 Oct

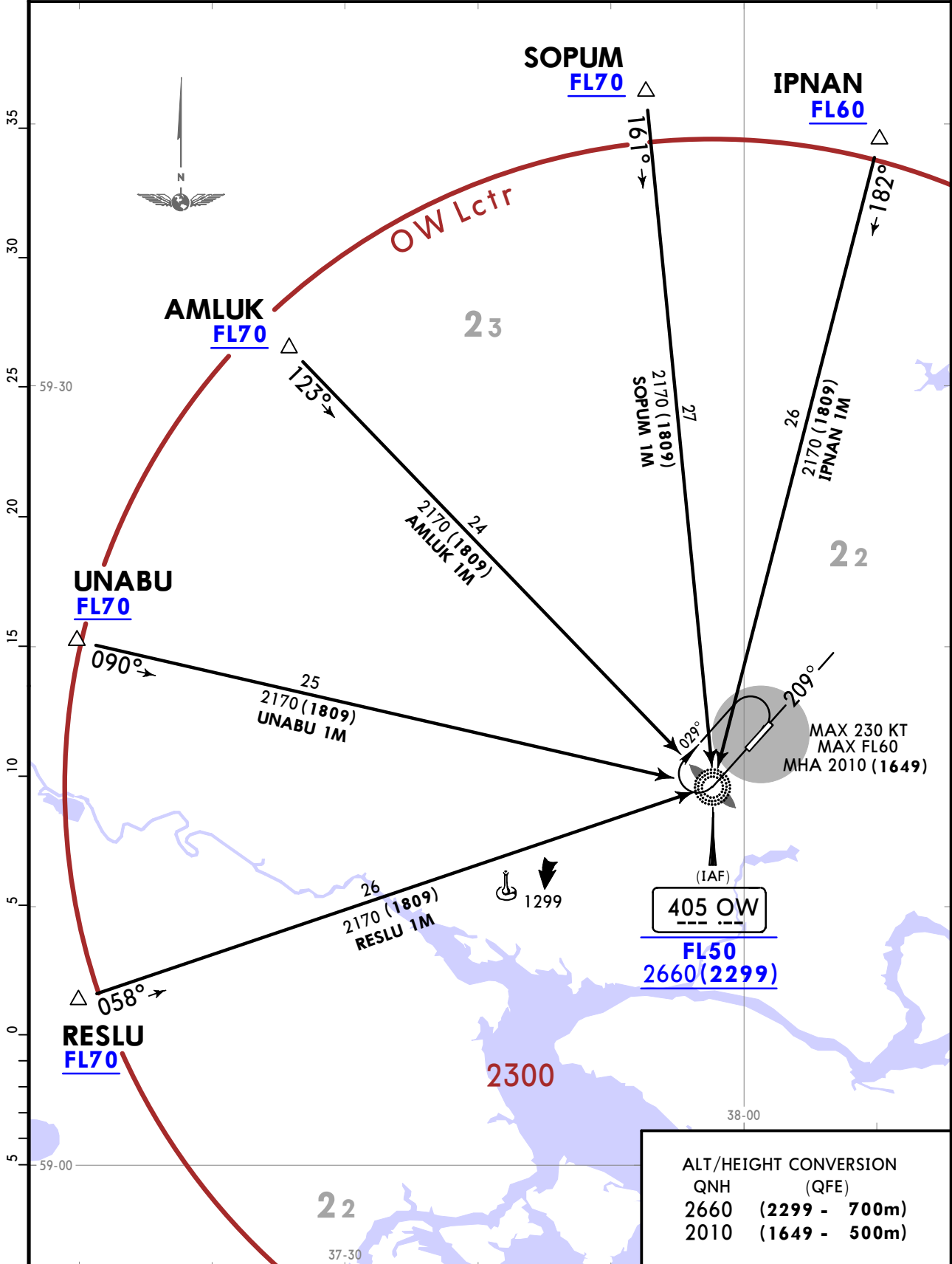
CHEREP OVETS, RUSSIA

STAR

Apt Elev
377

Alt Set: MM (hPa on request) QNH on request (QFE)
Trans level: FL50

AMLUK 1M [AMLU1M], IPNAN 1M [IPNA1M]
RESLU 1M [RESL1M], SOPUM 1M [SOPU1M]
UNABU 1M [UNAB1M]
RWY 03 ARRIVALS
RADAR CONTROL REQUIRED



CHANGES: Crossing over OW, MSA.

© JEPPESEN, 2018. ALL RIGHTS RESERVED.

**ULWC/CEE
CHEREP OVETS**

JEPPESEN
5 OCT 18 (10-2G) Eff 11 Oct

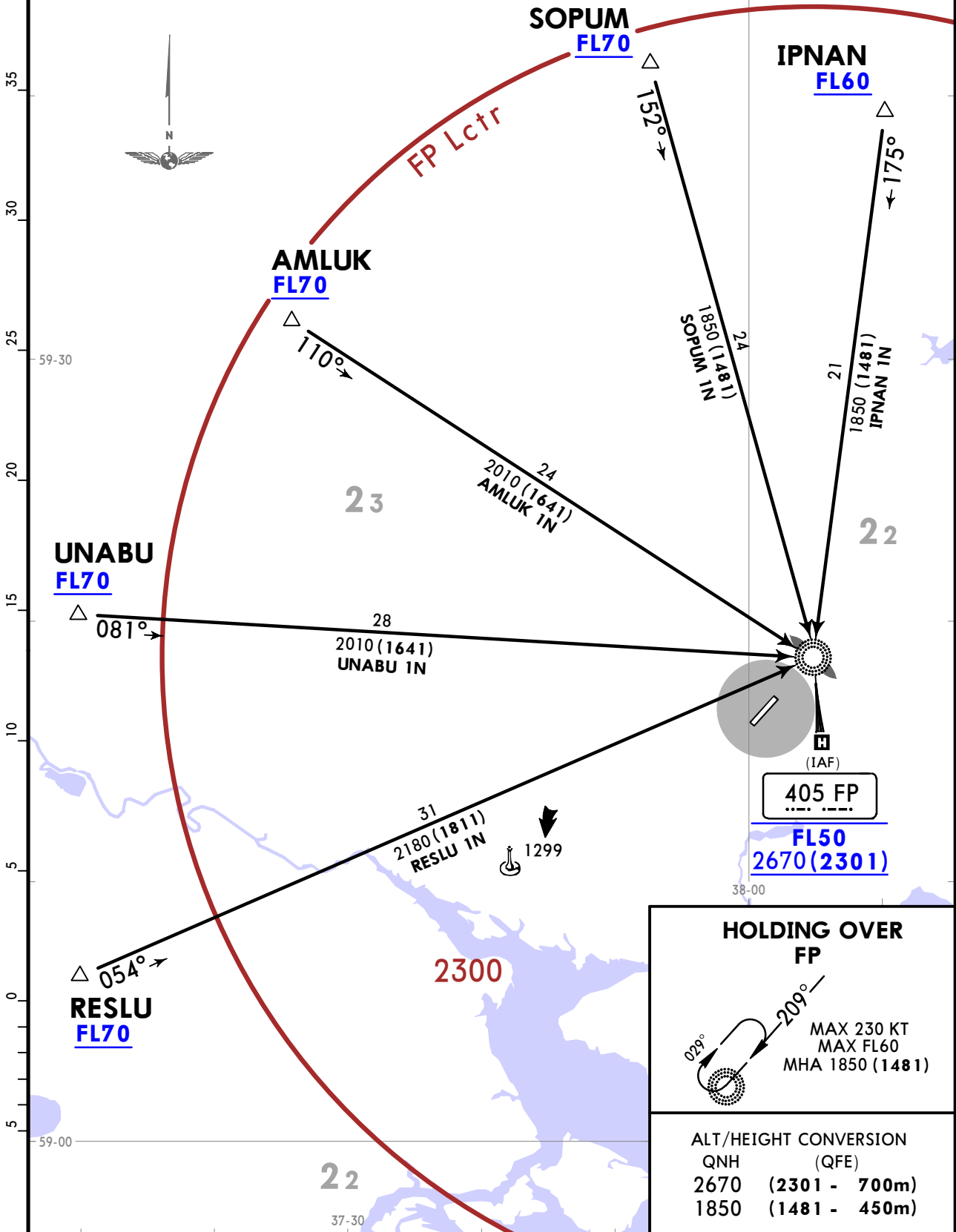
CHEREP OVETS, RUSSIA

STAR

Apt Elev
377

Alt Set: MM (hPa on request) QNH on request (QFE)
Trans level: FL50

**AMLUK 1N [AMLU1N], IPNAN 1N [IPNA1N]
RESLU 1N [RESL1N], SOPUM 1N [SOPU1N]
UNABU 1N [UNAB1N]
RWY 21 ARRIVALS
RADAR CONTROL REQUIRED**



ULWC/CEE
CHEREP OVETS

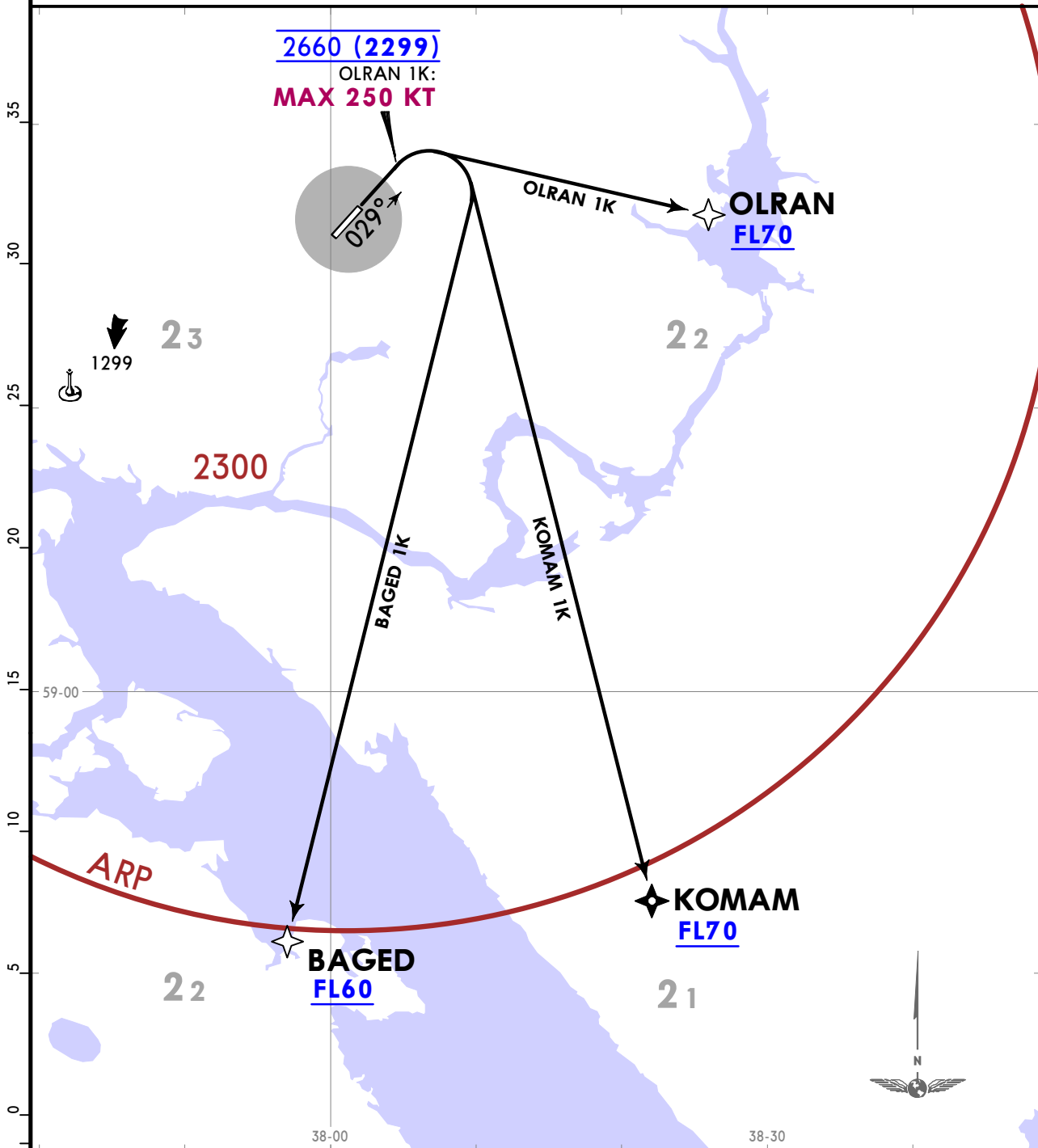
JEPPESEN
18 JAN 19 **10-3** Eff 31 Jan

CHEREP OVETS, RUSSIA
RNAV SID

Apt Elev
377

QNH on request (QFE)
Trans alt: 3660 (3299)
1. RNAV 1
2. GNSS required.
3. Turn before DER is PROHIBITED.

BAGED 1K [BAGE1K]
KOMAM 1K [KOMA1K]
OLRAN 1K [OLRA1K]
RWY 03 RNAV DEPARTURES



These SIDs require minimum climb gradients
of
KOMAM 1K: 3.4% up to FL70 due to airspace limitations.
OLRAN 1K: 8.2% up to FL70 due to airspace limitations.

Gnd speed-KT	75	100	150	200	250	300
3.4% V/V (fpm)	258	344	516	689	861	1033
8.2% V/V (fpm)	623	830	1246	1661	2076	2491

ALT/HEIGHT CONVERSION

QNH	(QFE)
2660	(2299 - 700m)
3660	(3299 - 1000m)

ULWC/CEE CHEREP OVETS

JEPPESEN
18 JAN 19 (10-3A) Eff 31 Jan

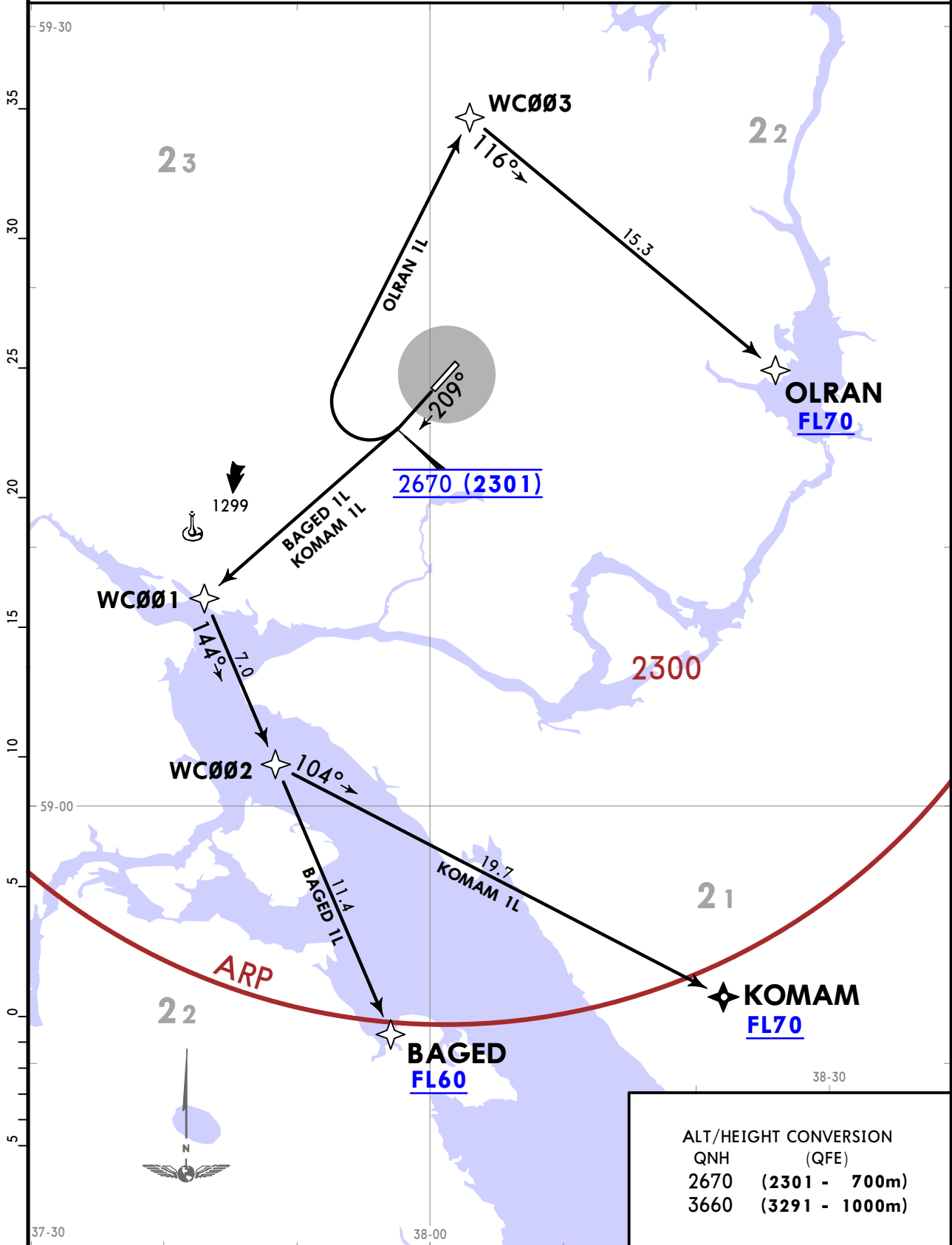
CHEREP OVETS, RUSSIA

RNAV SID

Apt Elev
377

QNH on request (QFE)
Trans alt: 3660 (3291)
1. RNAV 1
2. GNSS required.
3. Turn before DER is PROHIBITED.

BAGED 1L [BAGE1L]
KOMAM 1L [KOMA1L]
OLRAN 1L [OLRA1L]
RWY 21 RNAV DEPARTURES



ALT/HEIGHT CONVERSION	
QNH	(QFE)
2670	(2301 - 700m)
3660	(3291 - 1000m)

ULWC/CEE
CHEREP OVETS

JEPPESEN
18 JAN 19 **(10-3B)** Eff 31 Jan

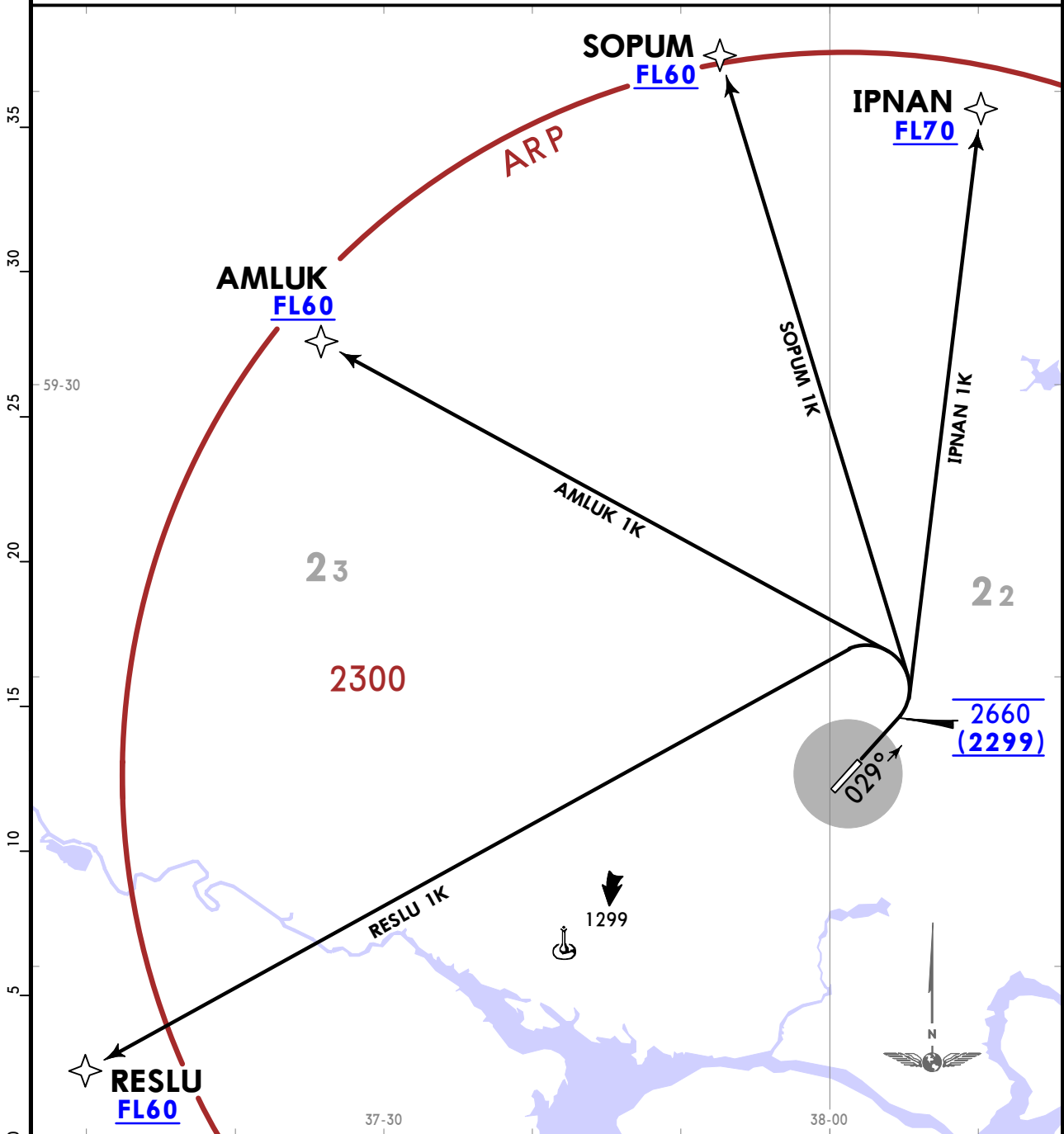
CHEREP OVETS, RUSSIA

RNAV SID

Apt Elev
377

QNH on request (QFE)
Trans alt: 3660 (3299)
1. RNAV 1
2. GNSS required.
3. Turn before DER is PROHIBITED.

AMLUK 1K [AMLU1K], IPNAN 1K [IPNA1K]
RESLU 1K [RESL1K], SOPUM 1K [SOPU1K]
RWY 03 RNAV DEPARTURES



These SIDs require minimum climb gradients of

- AMLUK 1K:** 3.5% up to FL60 due to airspace limitations.
- IPNAN 1K:** 5.1% up to FL70 due to airspace limitations.
- SOPUM 1K:** 3.8% up to FL60 due to airspace limitations.

Gnd speed-KT	75	100	150	200	250	300
3.5% V/V (fpm)	266	354	532	709	886	1063
3.8% V/V (fpm)	289	385	577	770	962	1154
5.1% V/V (fpm)	387	516	775	1033	1291	1549

ALT/HEIGHT CONVERSION
QNH (QFE)
2660 (2299 - 700m)
3660 (3299 - 1000m)

**ULWC/CEE
CHEREP OVETS**

JEPPESEN
18 JAN 19 (10-3C) Eff 31 Jan

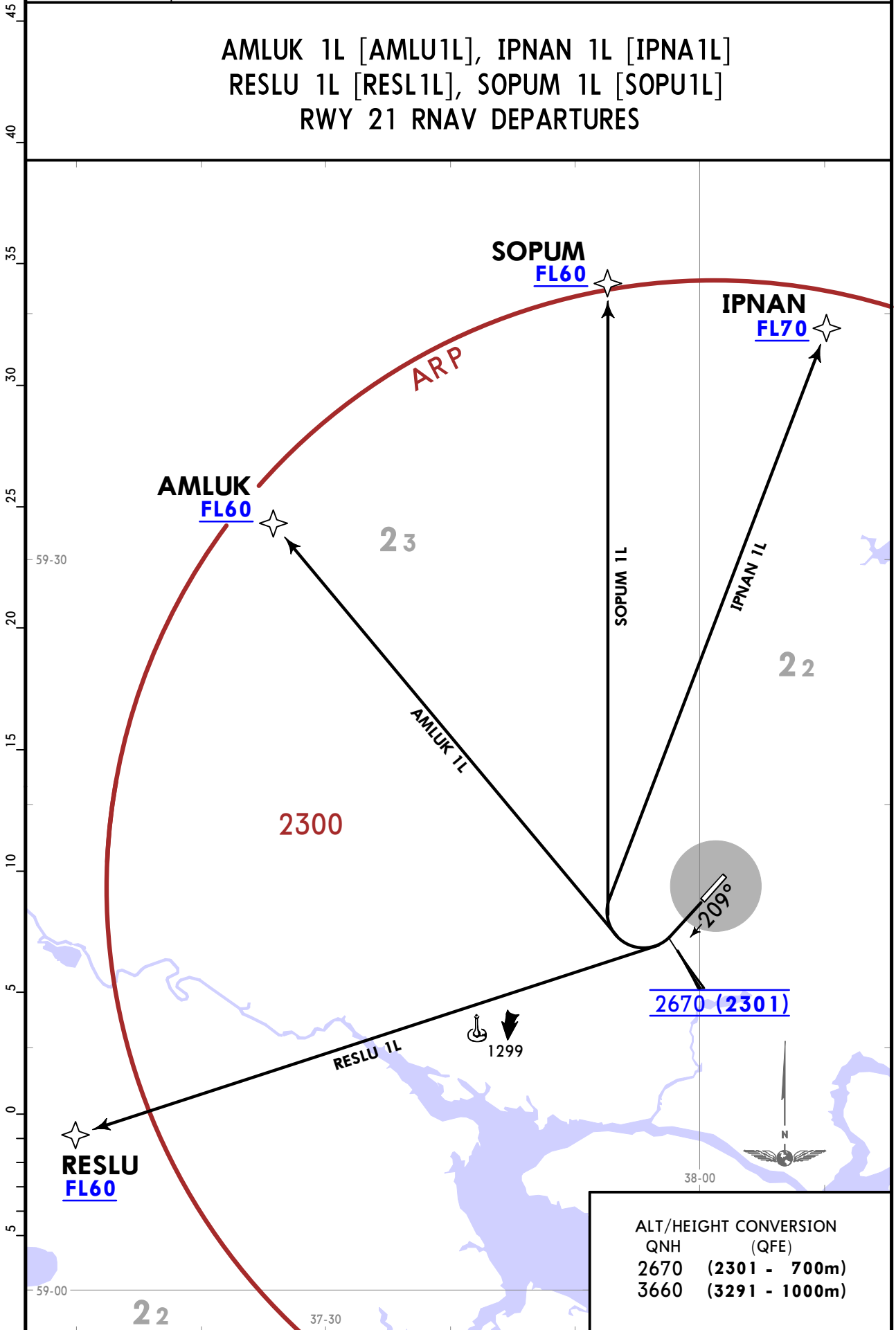
CHEREP OVETS, RUSSIA

RNAV SID

Apt Elev
377

- QNH on request (QFE)
Trans alt: 3660 (3291)
1. RNAV 1
 2. GNSS required.
 3. Turn before DER is PROHIBITED.

**AMLUK 1L [AMLU1L], IPNAN 1L [IPNA1L]
RESLU 1L [RESL1L], SOPUM 1L [SOPU1L]
RWY 21 RNAV DEPARTURES**



ALT/HEIGHT CONVERSION	
QNH	(QFE)
2670	(2301 - 700m)
3660	(3291 - 1000m)

CHANGES: Turning altitude revised.

© JEPPESEN, 2018, 2019. ALL RIGHTS RESERVED.

ULWC/CEE

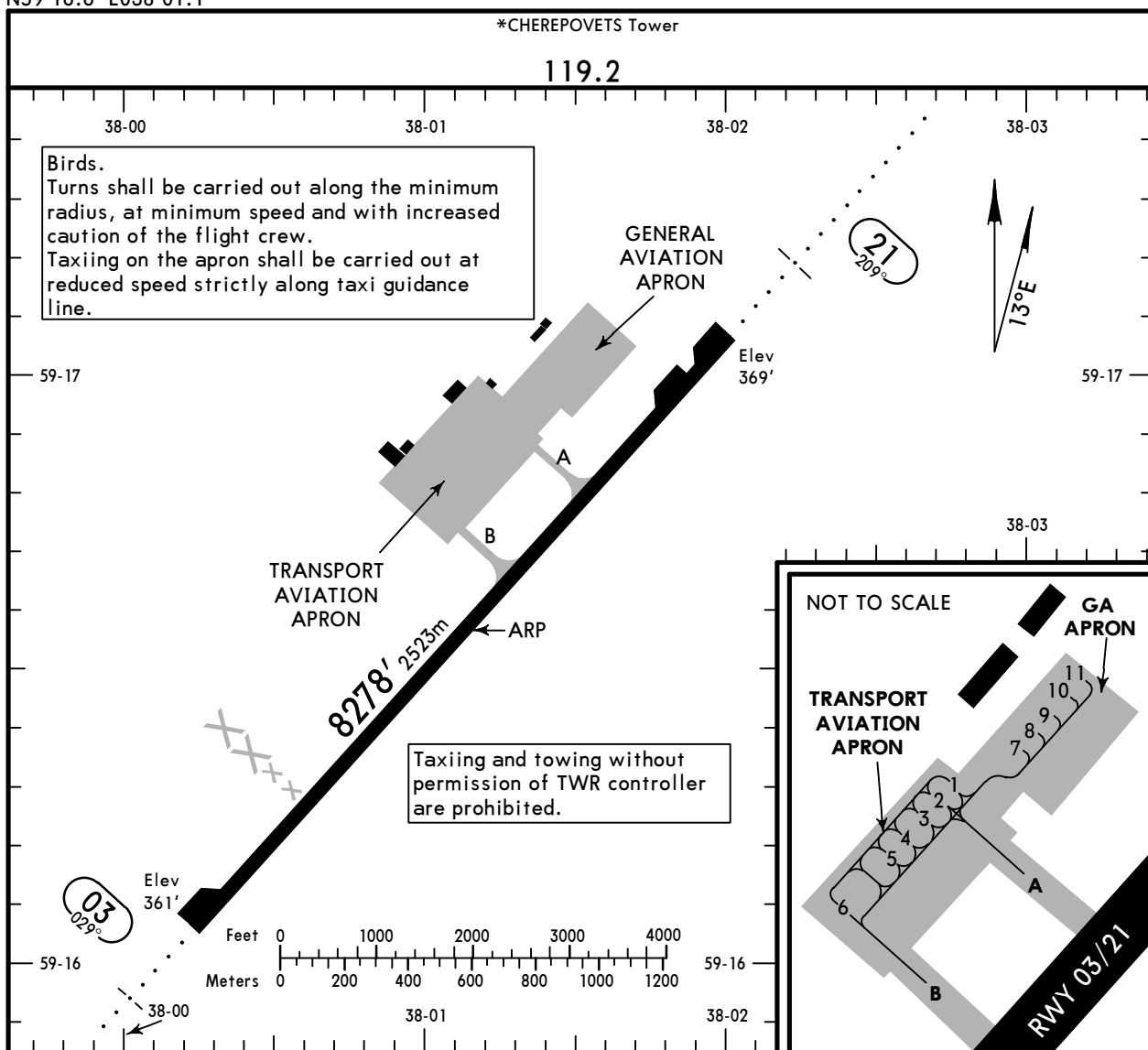
Apt Elev 377'
N59 16.6 E038 01.1

JEPPESEN

18 JAN 19 (10-9) Eff 31 Jan

CHEREPOVETS, RUSSIA

CHEREPOVETS



ADDITIONAL RUNWAY INFORMATION

RWY	ALS		PAPI-L (angle 3.0°)		USABLE LENGTHS			WIDTH
	RL (60m)	ALS	Threshold	Glide Slope	TAKE-OFF	LANDING BEYOND		
03	RL (60m)	ALS					138'	
21	RL (60m)	ALS			7245'	2208m	42m	

① TAKE-OFF RUN AVAILABLE

<u>RWY 03:</u>		<u>RWY 21:</u>	
From rwy head	8278' (2523m)	From rwy head	8278' (2523m)
twy B int	3077' (938m)	twy A int	5876' (1791m)
twy A int	2402' (732m)	twy B int	5200' (1585m)

TAKE-OFF

AIR CARRIER (JAA)

All Rwys

	LVP must be in force RCLM (DAY only) or RL	RCLM (DAY only) or RL
A		
B	250m	400m
C		
D	300m	

ULWC/CEE

JEPPESEN
 16 MAR 18
 Eff 29 Mar 10-9S

Standard
CHEREPOVETS, RUSSIA
 CHÉREPOVETS

STRAIGHT-IN RWY		A	B	C	D
03	① RNAV (GNSS)	830' (469') R1500m	830' (469') R1500m	830' (469') R2000m	830' (469') R2000m
	ALS out	R1500m	R1500m	R2200m	R2200m
	① NDB	910' (549') R1500m	910' (549') R1500m	910' (549') R2300m	910' (549') R2300m
	ALS out	R1500m	R1500m	R2400m	R2400m
21	ILS Z or Y FULL	569' (200') R1000m	569' (200') R1000m	569' (200') R1000m	569' (200') R1000m
	ALS out	R1200m	R1200m	R1200m	R1200m
	LOC	NOT AUTH	NOT AUTH	NOT AUTH	NOT AUTH
	① RNAV (GNSS)	730' (361') R1500m	730' (361') R1500m	730' (361') R1500m	730' (361') R1500m
	ALS out	R1500m	R1500m	R1700m	R1700m
	①② NDB	730' (361') R1500m	730' (361') R1500m	730' (361') R1500m	730' (361') R1500m
	ALS out	R1500m	R1500m	R1700m	R1700m
	①③ NDB	810' (441') R1500m	810' (441') R1500m	810' (441') R1900m	810' (441') R1900m
	ALS out	R1500m	R1500m	R2100m	R2100m

- ① Continuous Descent Final Approach.
- ② with FP NDB.
- ③ w/o FP NDB.

CIRCLE-TO-LAND	100 KT	135 KT	180 KT	205 KT
	870' (493') V1500m ④	960' (583') V1600m	1090' (713') V2400m	1090' (713') V3600m

④ or higher minimums of preceding straight-in approach.

TAKE-OFF

Low Visibility Take-off		Day: RL or RCLM Night: RL		Adequate vis ref (Day only)
A	RVR 300m	400m		500m
B				
C				
D				

ULWC/CEE
CHEREPOVETS

JEPPESEN
18 JAN 19 11-1 Eff 31 Jan

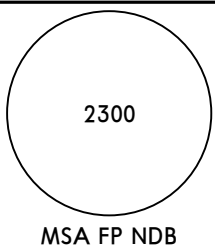
CHEREPOVETS, RUSSIA
ILS Z Rwy 21

*CHEREPOVETS Tower

119.2

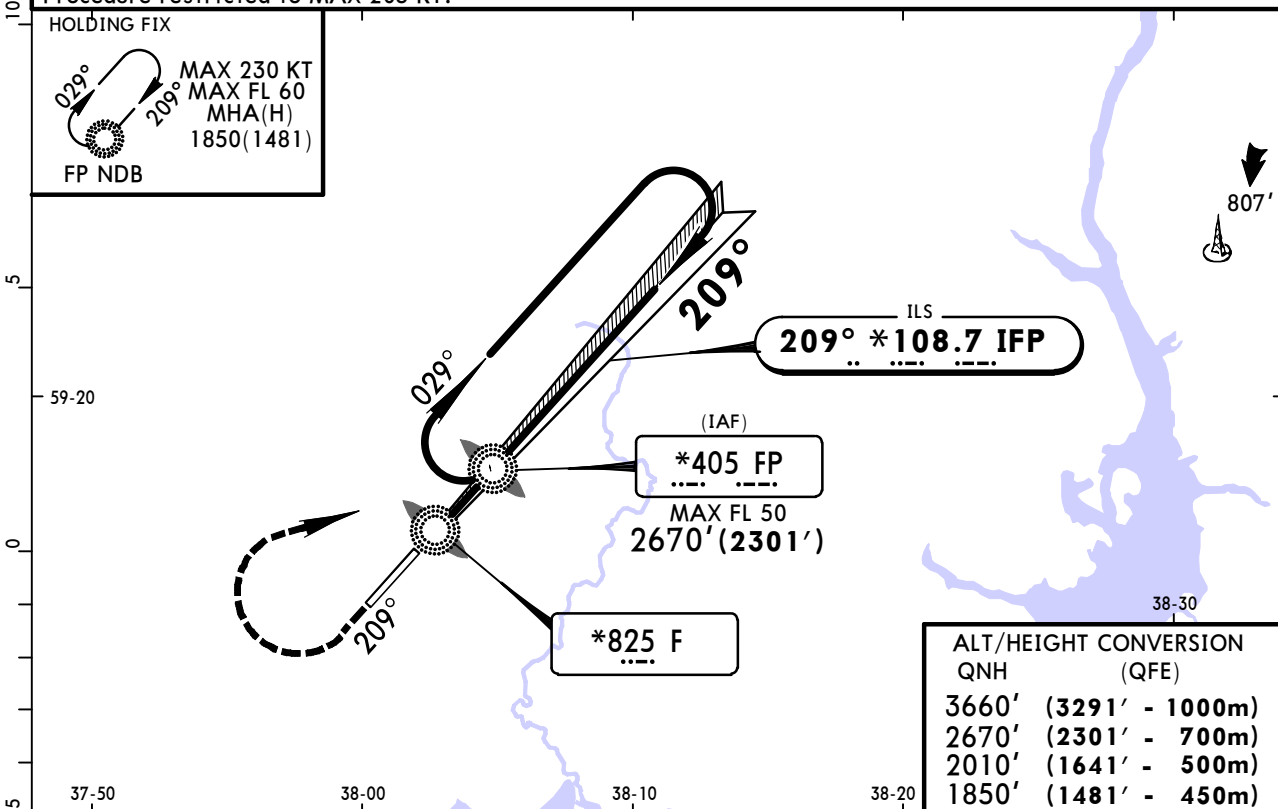
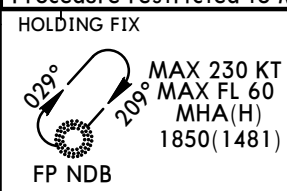
BRIEFING STRIP™

LOC IFP *108.7	Final Apch Crs 209°	GS LOM 1091'(722')	ILS DA(H) 569'(200')	Apt Elev 377' Rwy 369'
-----------------------------	----------------------------------	--------------------------	----------------------------	---------------------------



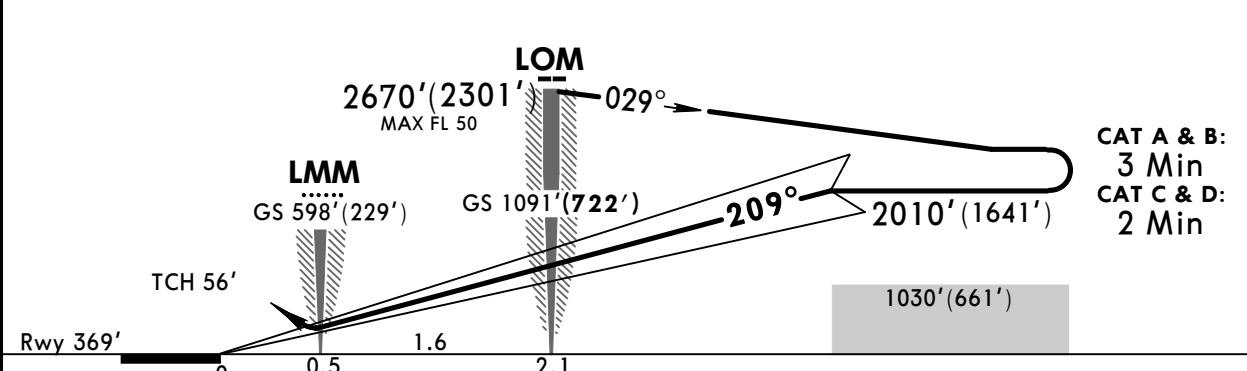
MISSED APCH: Climb on 209° to 2670'(2301'), then turn RIGHT to FP NDB, then according to chart or to holding area.

Alt Set: MM (hPa on req) QNH on req (QFE) Trans level: FL 50 Trans alt: 3660' (3291')
Procedure restricted to MAX 205 KT.



ALT/HEIGHT CONVERSION
QNH (QFE)

3660'	(3291' - 1000m)
2670'	(2301' - 700m)
2010'	(1641' - 500m)
1850'	(1481' - 450m)



CAT A & B:
3 Min
CAT C & D:
2 Min

Gnd speed-Kts	70	90	100	120	140	160	ALS PAPI	2670' (2301') ↑ on	209°	FP 405 RT
GS	3.00°	372	478	531	637	743				

STRAIGHT-IN LANDING RWY 21				CIRCLE-TO-LAND		
ILS		LOC (GS out)		Max Kts	MDA(H)	
DA(H) 569'(200')						
FULL		ALS out		100	870'(493') 1600m	
A					135	960'(583') 1600m
B	1200m		NOT AUTHORIZED		180	1090'(713') 3200m
C					205	1090'(713') 3600m
D						

PANS OPS

ULWC/CEE CHEREPOVETS

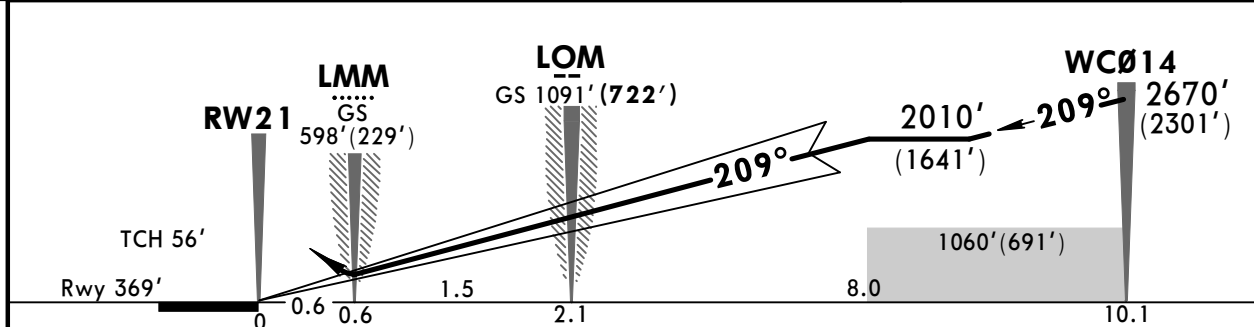
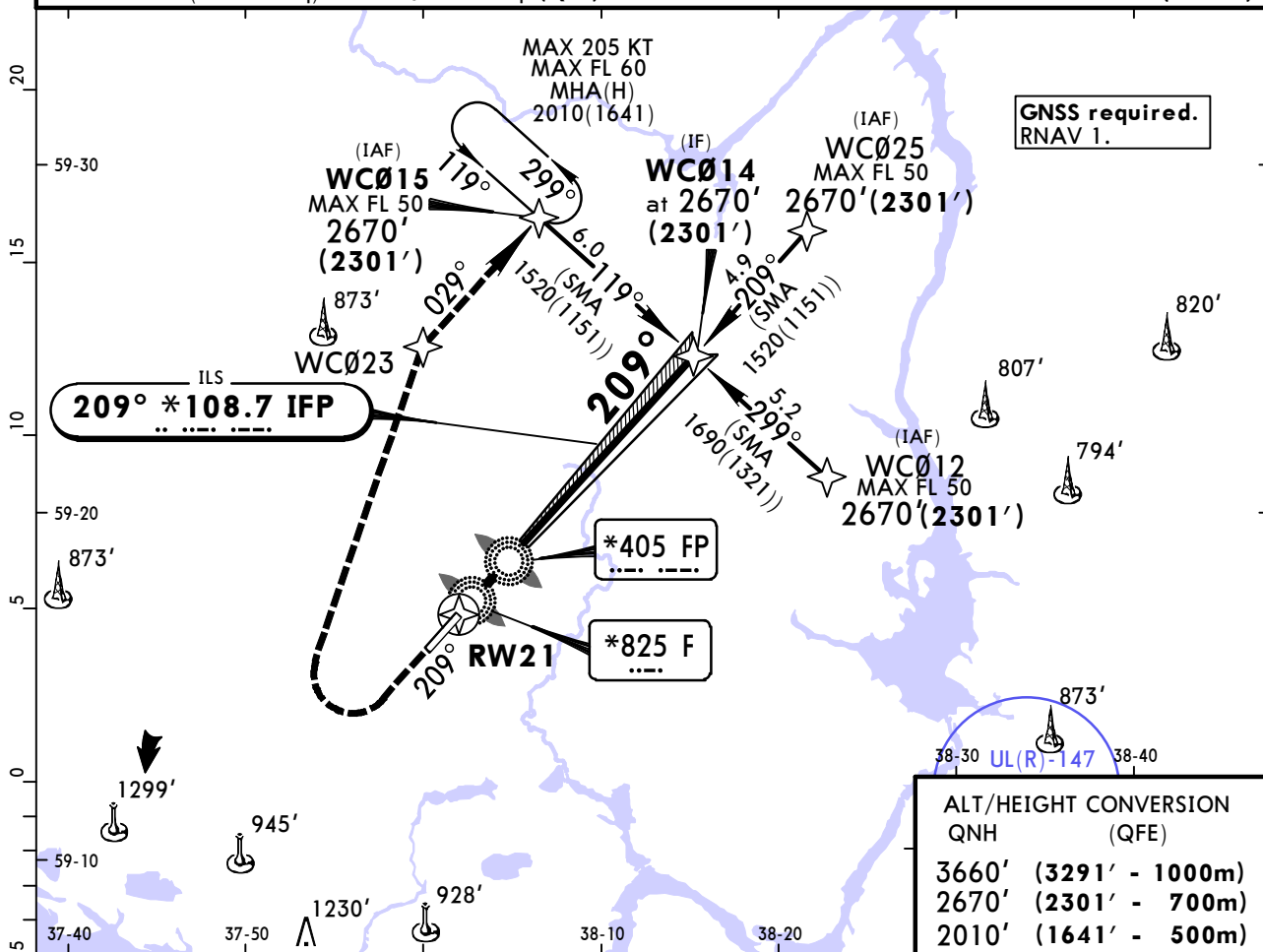
JEPPesen
18 JAN 19 **11-2** Eff 31 Jan

CHEREPOVETS, RUSSIA ILS Y Rwy 21

*CHEREPOVETS Tower

119.2					<div style="border: 1px solid black; border-radius: 50%; width: 100px; height: 100px; margin: 0 auto; display: flex; align-items: center; justify-content: center;"> 2300 </div>
LOC IFP *108.7	Final Apch Crs 209°	GS LOM 1091'(722')	ILS DA(H) 569'(200')	Apt Elev 377' Rwy 369'	
MISSED APCH: Climb on 209° to 2670'(2301'), then turn RIGHT to WCØ23, then proceed to WCØ15, then according to chart or to holding area.					MSA WCØ14

Alt Set: MM (hPa on req) QNH on req (QFE) Trans level: FL 50 Trans alt: 3660' (3291')



Gnd speed-Kts	70	90	100	120	140	160	ALS PAPI <div style="display: flex; align-items: center;"> <div style="border-left: 1px dashed black; width: 10px; height: 20px; margin-right: 5px;"></div> <div style="text-align: center;"> 2670' (2301') ↑ on 209° </div> <div style="margin-left: 10px;"> WCØ23 RT </div> </div>
GS	3.00°	372	478	531	637	743	

	STRAIGHT-IN LANDING RWY 21		CIRCLE-TO-LAND	
	ILS DA(H) FULL	LOC (GS out) ALS out	Max Kts	MDA(H)
A	569'(200')		100	870'(493') / 1600m
B			135	960'(583') / 1600m
C			180	1090'(713') / 3200m
D			205	1090'(713') / 3600m

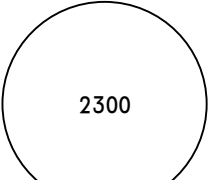
PANS OPS

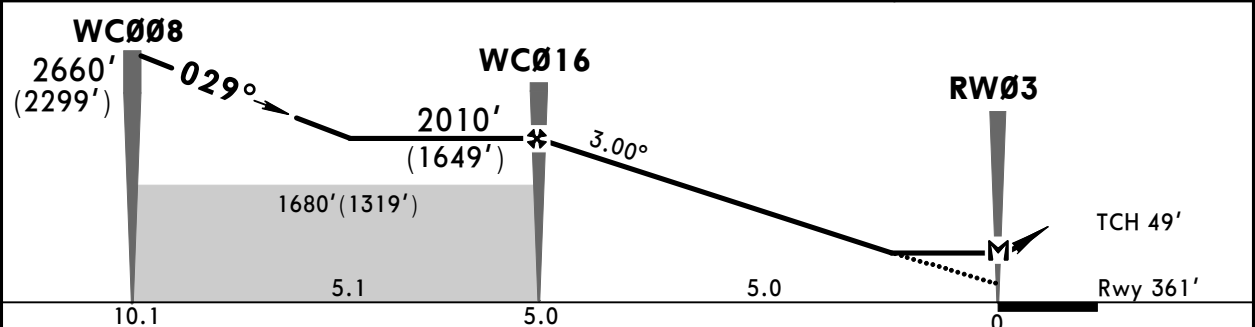
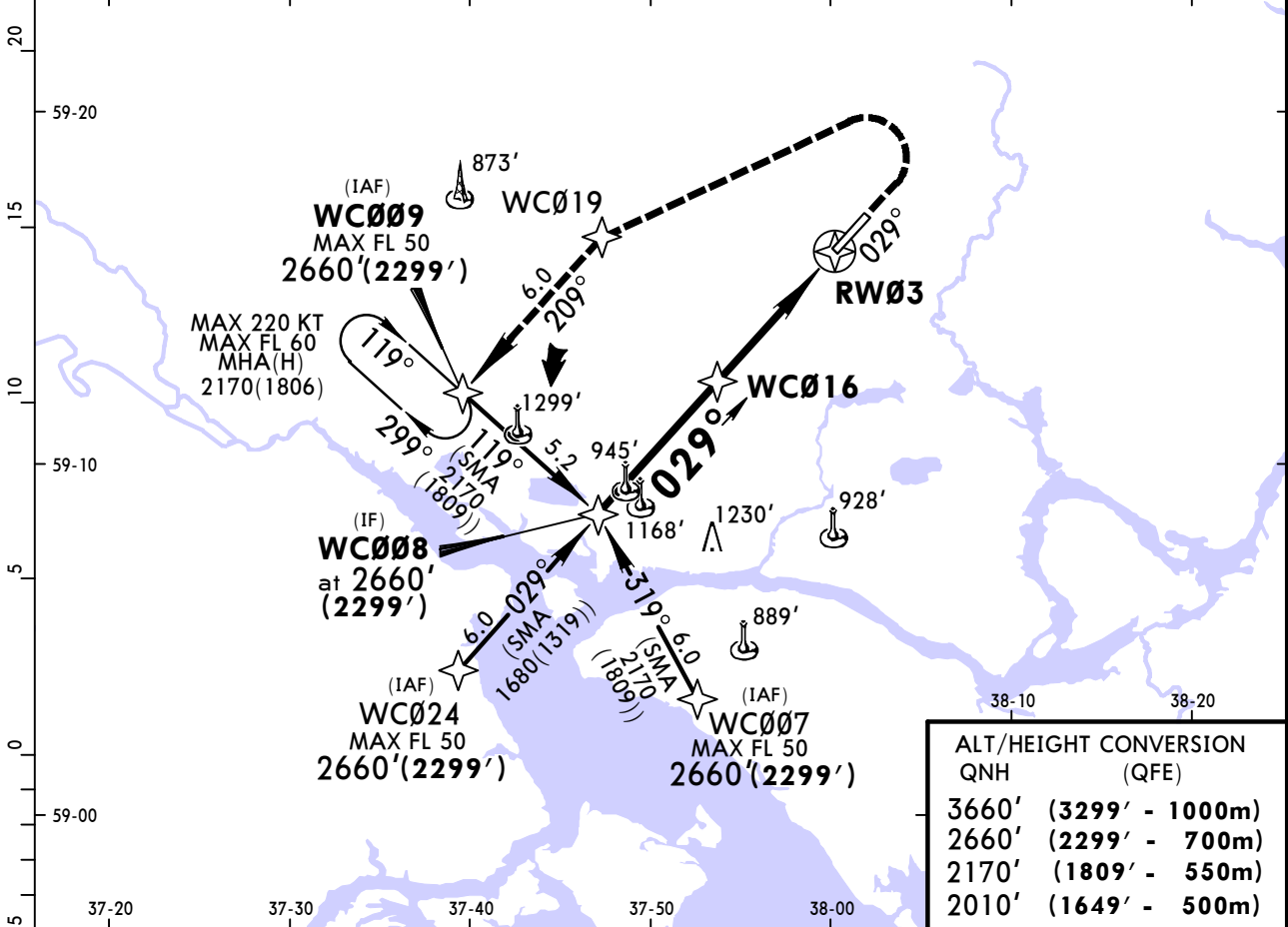
ULWC/CEE
CHEREPOVETS

JEPPESEN
18 JAN 19 **(12-1)** Eff 31 Jan

CHEREPOVETS, RUSSIA
RNAV (GNSS) Rwy 03

*CHEREPOVETS Tower

119.2					 2300
RNAV	Final Apch Crs 029°	Procedure Alt WCØ16 2010'(1649')	LNAV MDA(H) 830'(469')	Apt Elev 377' Rwy 361'	
MISSED APCH: Climb on 029° to 2660'(2299'), then turn LEFT to WCØ19, then proceed to WCØØ9, then according to chart or to holding area.					MSA WCØØ8
Alt Set: MM (hPa on req) RNP apch.		QNH on req (QFE)	Trans level: FL 50	Trans alt: 3660' (3299')	



STRAIGHT-IN LANDING RWY 03 LNAV MDA(H) 830'(469')	CIRCLE-TO-LAND
ALS out	Max Kts

	ALS out	Max Kts	MDA(H)
A		100	870'(493') 1600m
B	1600m	135	960'(583') 1600m
C	2000m	180	1090'(713') 3200m
D	2400m	205	1090'(713') 3600m

PANS OPS

CHANGES: Missed approach.

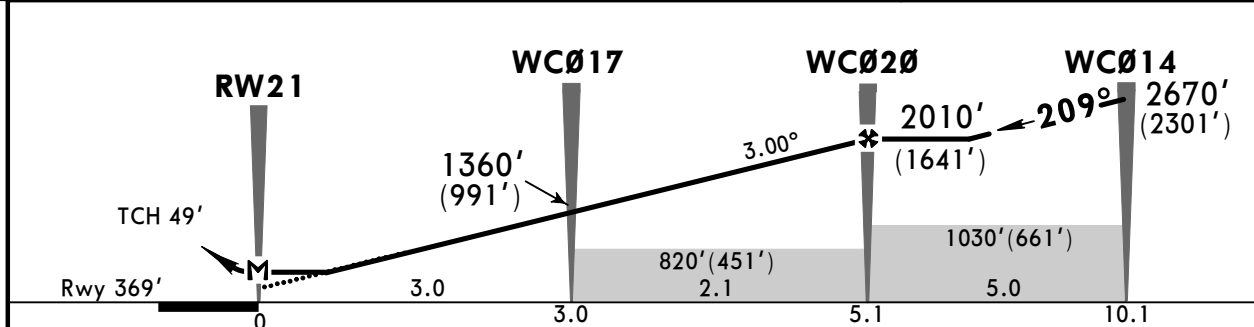
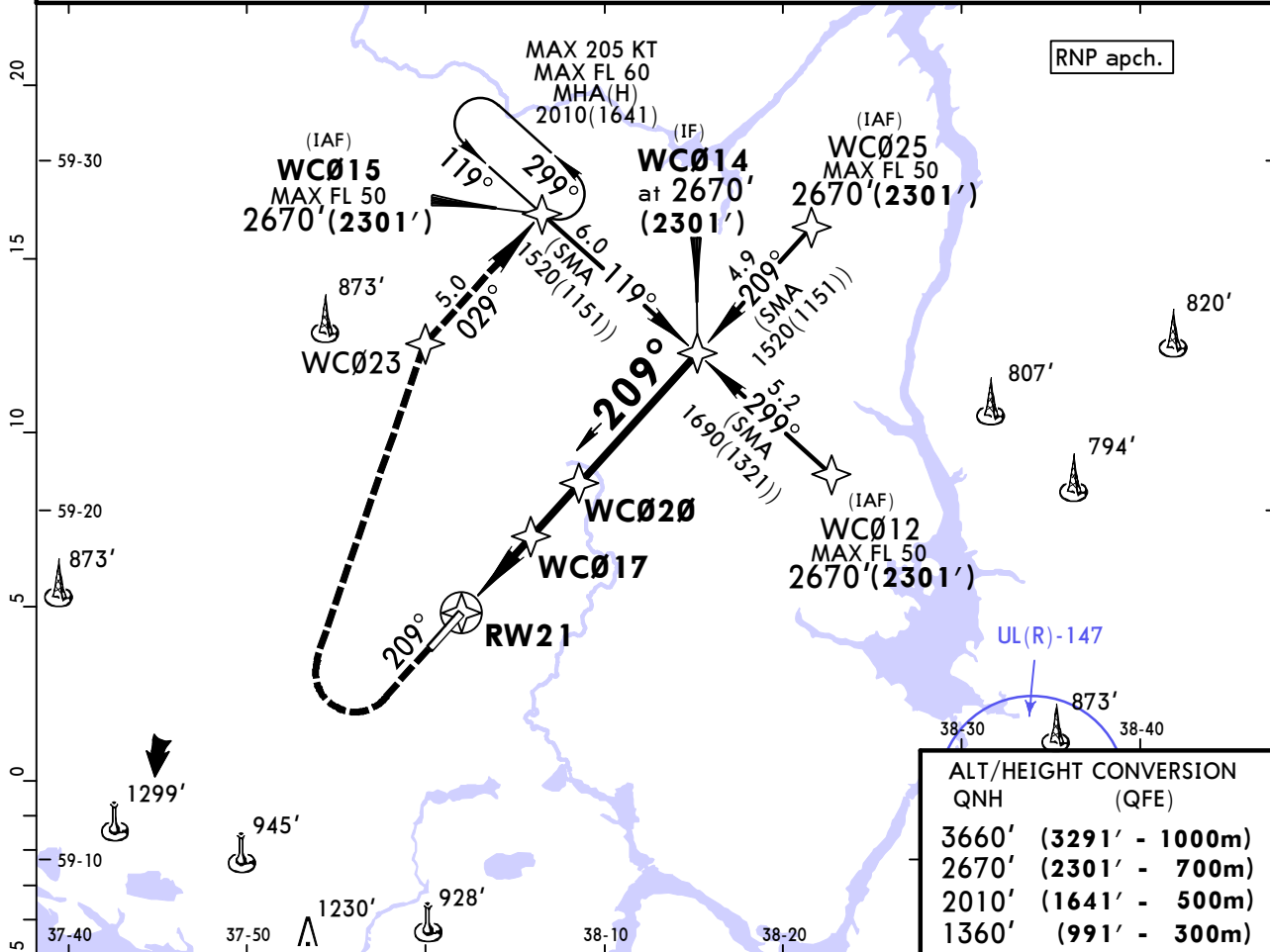
ULWC/CEE
CHEREPOVETS

JEPPesen
18 JAN 19 **12-2** Eff 31 Jan

CHEREPOVETS, RUSSIA
RNAV (GNSS) Rwy 21

*CHEREPOVETS Tower

119.2					<div style="border: 1px solid black; border-radius: 50%; width: 100px; height: 100px; margin: 0 auto;"></div> <p style="text-align: center;">2300</p> <p style="text-align: center;">MSA WCØ14</p>
RNAV	Final Apch Crs 209°	Procedure Alt WCØ2Ø 2010'(1641')	LNAV MDA(H) 730'(361')	Apt Elev 377' Rwy 369'	
<p>MISSED APCH: Climb on 209° to 2670'(2301'), then turn RIGHT to WCØ23, then proceed to WCØ15, then according to chart or to holding area.</p>					
Alt Set: MM (hPa on req)		QNH on req (QFE)		Trans level: FL 50	Trans alt: 3660' (3291')



Gnd speed-Kts	70	90	100	120	140	160	ALS PAPI 2670' (2301') on 209° WCØ23 RT
Descent Angle	3.00°	372	478	531	637	849	
MAP at RW21							

STRAIGHT-IN LANDING RWY 21		CIRCLE-TO-LAND	
LNAV		Max Kts	
MDA(H) 730'(361')		MDA(H)	
ALS out			
A		100	870'(493') 1600m
B	1600m	135	960'(583') 1600m
C		180	1090'(713') 3200m
D	2000m	205	1090'(713') 3600m

PANS OPS

CHANGES: Missed approach.

© JEPPesen, 2013, 2019. ALL RIGHTS RESERVED.

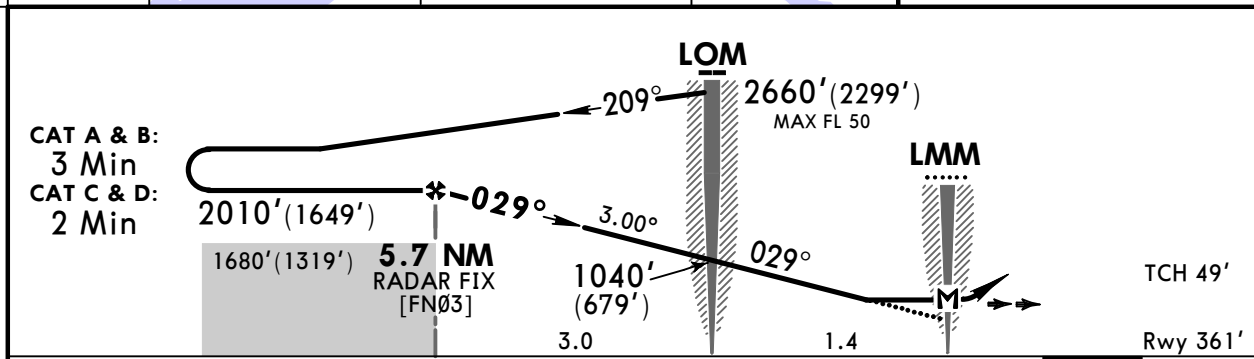
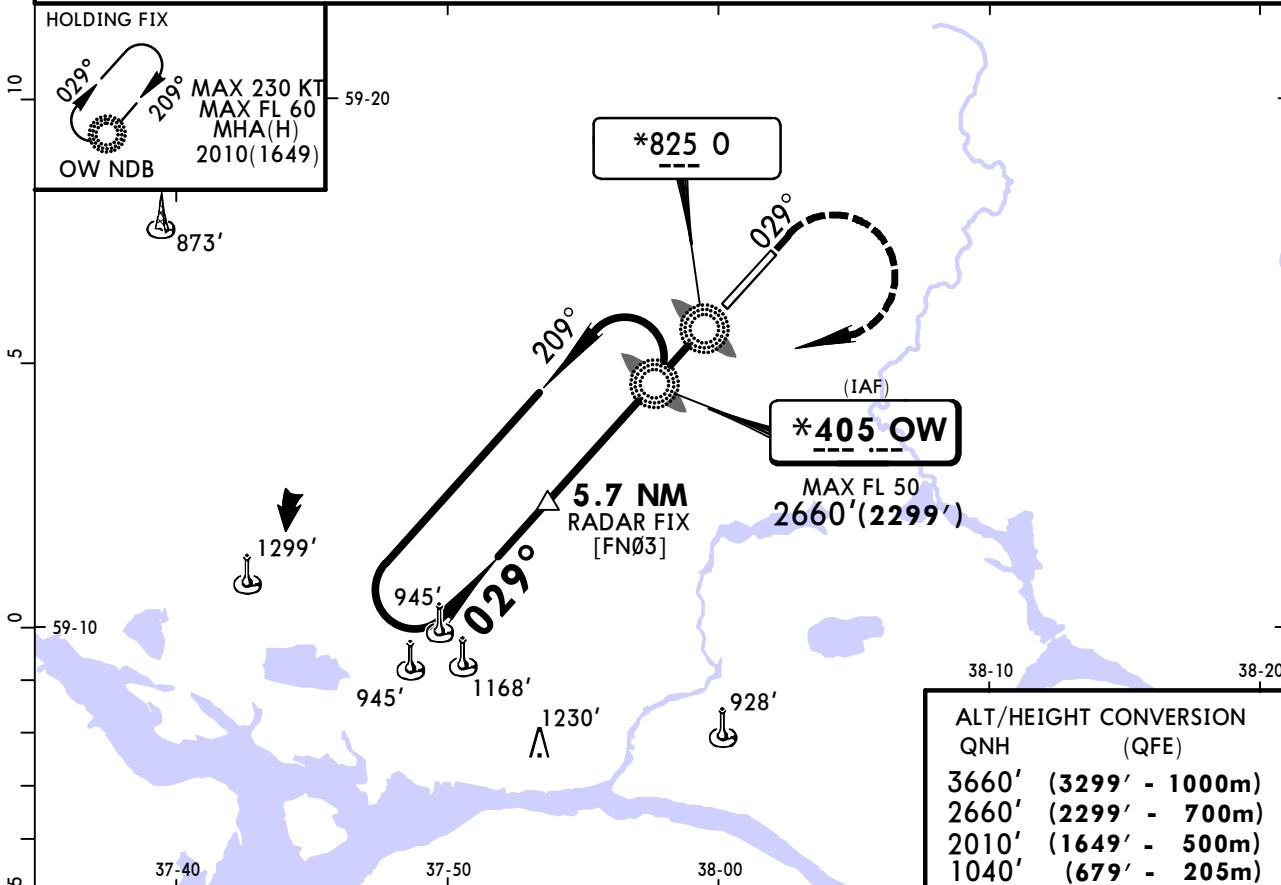
ULWC/CEE
CHEREPOVETS

JEPPesen
18 JAN 19 **16-1** Eff 31 Jan

CHEREPOVETS, RUSSIA
NDB Rwy 03

*CHEREPOVETS Tower

119.2					<div style="border: 1px solid black; border-radius: 50%; width: 100px; height: 100px; margin: 0 auto; display: flex; align-items: center; justify-content: center;"> 2300 </div>
NDB OW *405	Final Apch Crs 029°	Procedure Alt 5.7 NM RADAR FIX 2010'(1649')	MDA(H) 910'(549')	Apt Elev 377' Rwy 361'	
MISSED APCH: Climb on 029° to 2660'(2299'), then turn RIGHT to OW NDB, then according to chart or to holding area.					MSA OW NDB
Alt Set: MM (hPa on req) Radar required.		QNH on req (QFE)	Trans level: FL 50	Trans alt: 3660' (3299')	



Gnd speed-Kts	70	90	100	120	140	160	ALS 	2660' (2299') on 029°	OW 405 RT
Descent Angle	3.00°	372	478	531	637	743		849	
MAP at LMM									

	STRAIGHT-IN LANDING RWY 03		CIRCLE-TO-LAND	
	MDA(H)	ALS out	Max Kts	MDA(H)
A	910'(549')		100	910'(533')
B		1600m	135	960'(583')
C		2400m	180	1090'(713')
D		2800m	205	1090'(713')

PANS OPS

CHANGES: Missed approach.

ULWC/CEE
CHEREPOVETS

JEPPESEN
18 JAN 19 **(16-2)** Eff 31 Jan

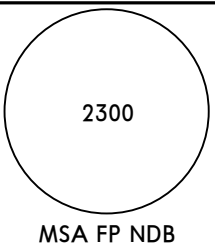
CHEREPOVETS, RUSSIA
NDB Rwy 21

*CHEREPOVETS Tower

119.2

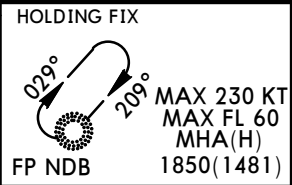
BRIEFING STRIP™

NDB FP *405	Final Apch Crs 209°	Procedure Alt 5.7 NM RADAR FIX 2010'(1641')	MDA(H) (CONDITIONAL) 730'(361')	Apt Elev 377' Rwy 369'
--------------------------	----------------------------------	---	--	-------------------------------

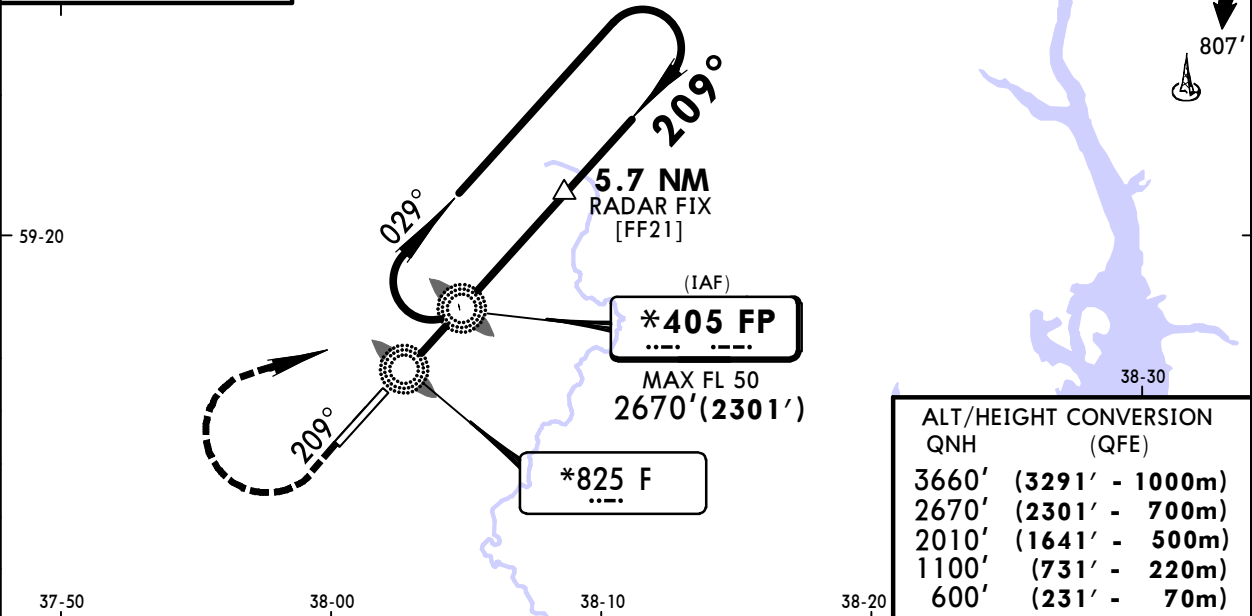


MISSED APCH: Climb on 209° to 2670'(2301'), then turn RIGHT to FP NDB, then according to chart or to holding area.

Alt Set: MM (hPa on req) QNH on req (QFE) Trans level: FL 50 Trans alt: 3660' (3291')
1. Radar required. 2. Procedure restricted to MAX 205 KT.



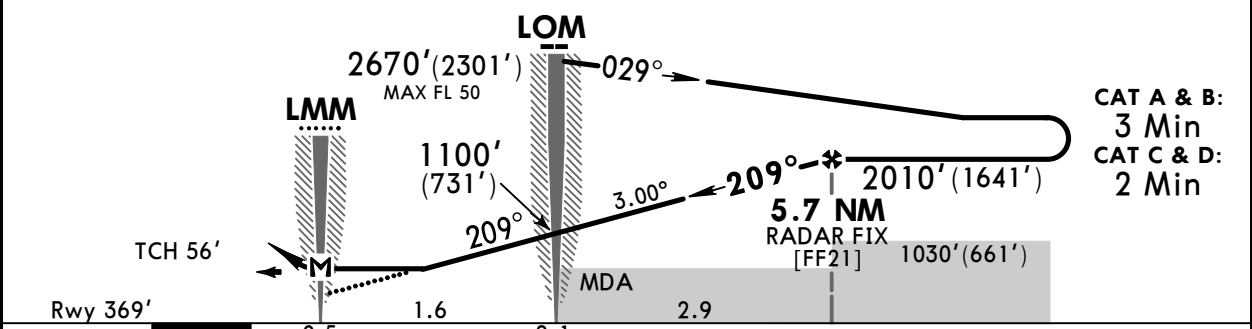
10
5
0
5



ALT/HEIGHT CONVERSION
QNH (QFE)

3660'	(3291' - 1000m)
2670'	(2301' - 700m)
2010'	(1641' - 500m)
1100'	(731' - 220m)
600'	(231' - 70m)

Pass LMM not below 600'(231').



Gnd speed-Kts	70	90	100	120	140	160	ALS PAPI	2670' (2301') on 209°	FP 405 RT
Descent Angle	3.00°	372	478	531	637	743			
MAP at LMM									

PANS OPS	STRAIGHT-IN LANDING RWY 21				Max Kts	CIRCLE-TO-LAND	
	with FP NDB		w/o FP NDB			MDA(H)	
	MDA(H)	ALS out	MDA(H)	ALS out			
A				100	870'(493')	1600m	
B	1600m			135	960'(583')	1600m	
C				180	1090'(713')	3200m	
D	2000m			205	1090'(713')	3600m	

CHANGES: Missed approach.

Chart changes since cycle 08-2019

ADD = added chart, REV = revised chart, DEL = deleted chart.

ACT	PROCEDURE IDENT	INDEX	REV DATE	EFF DATE
-----	-----------------	-------	----------	----------

CHEREPOVETS, (CHEREPOVETS - ULWC)

TERMINAL CHART CHANGE NOTICES

No Chart Change Notices for Airport ULWC