

List of pages in this Trip Kit

Trip Kit Index

Airport Information For ULMK

Terminal Charts For ULMK

Revision Letter For Cycle 09-2019

Change Notices

Notebook

General Information

Location: APATITY RUS
ICAO/IATA: ULMK / KVK
Lat/Long: N67° 27.8', E033° 35.1'
Elevation: 525 ft

Airport Use: Public
Daylight Savings: Not Observed
UTC Conversion: -3:00 = UTC
Magnetic Variation: 15.0° E

Fuel Types: Jet A-1
Customs: No
Airport Type: IFR
Landing Fee: Yes
Control Tower: Yes
Jet Start Unit: No
LLWS Alert: No
Beacon: No

Sunrise: 0009 Z
Sunset: 1915 Z

Runway Information

Runway: 11
Length x Width: 8189 ft x 138 ft
Surface Type: concrete
TDZ-Elev: 518 ft
Lighting: Edge, ALS

Runway: 29
Length x Width: 8189 ft x 138 ft
Surface Type: concrete
TDZ-Elev: 486 ft
Lighting: Edge

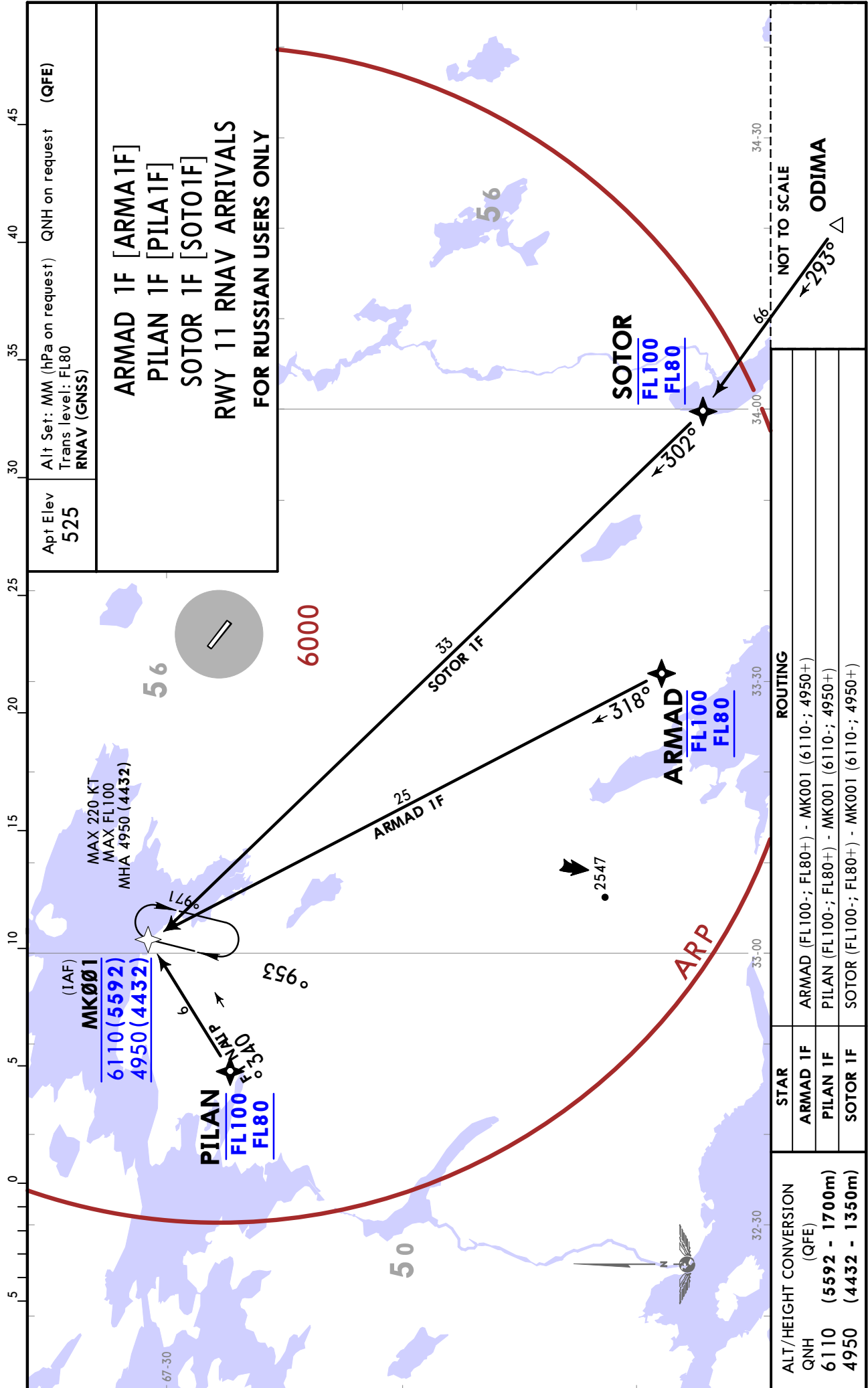
Communication Information

Talovka Vyshka Tower: 121.200 Non-English
Talovka Vyshka Tower: 124.000 Secondary Non-English

ULMK/KVK
Khibiny

21 SEP 18 10-2

APATITY, RUSSIA
RNAV STAR



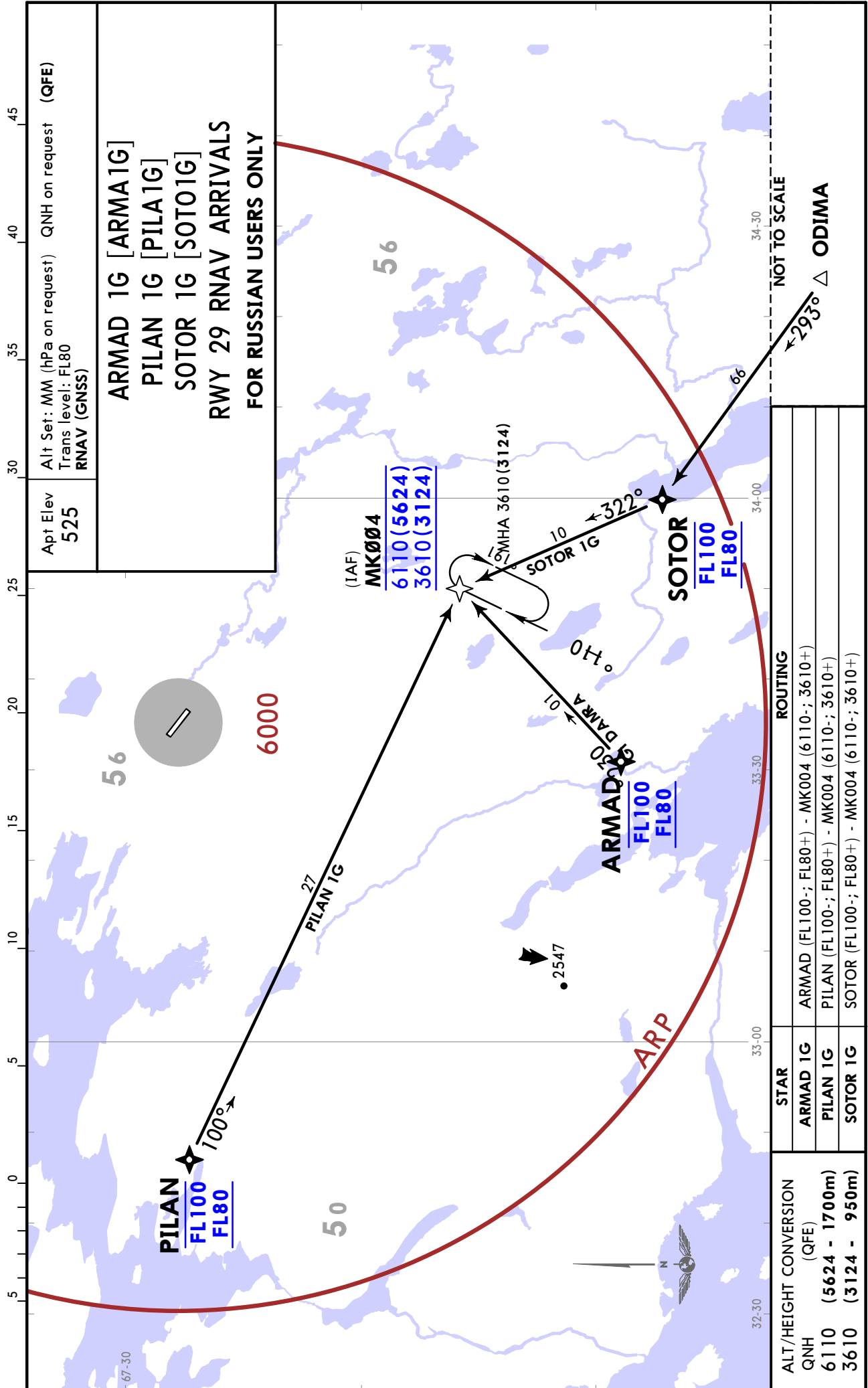
CHANGES: New airport.

© JEPPESEN, 2018. ALL RIGHTS RESERVED.

ULMK/KVK
Khibiny

JEPPESSEN
21 SEP 18 (10-2A)

APATITY, RUSSIA
RNAV STAR



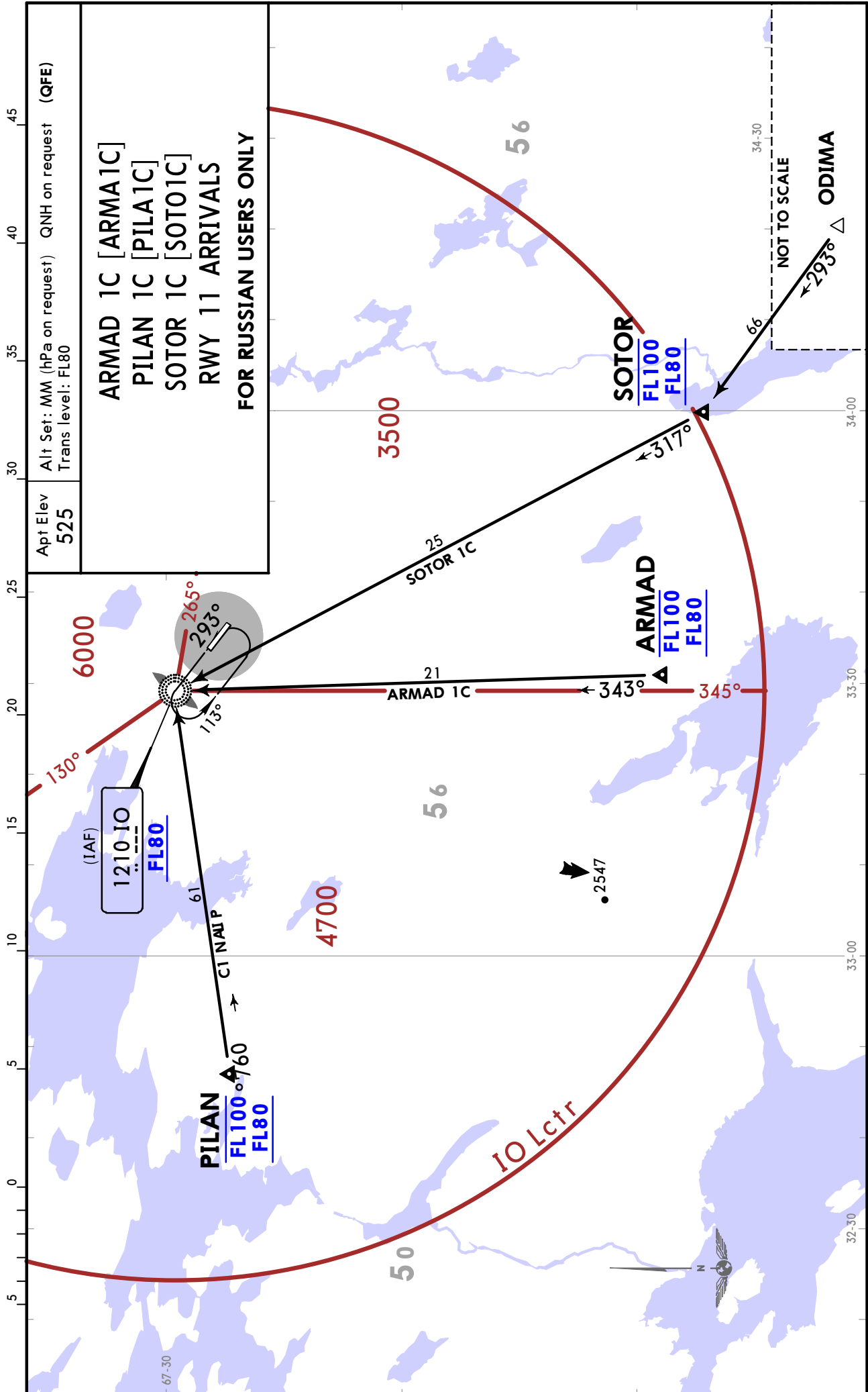
CHANGES: New airport.

© JEPPESSEN, 2018. ALL RIGHTS RESERVED.

ULMK/KVK
Khibiny

JEPPESSEN
21 SEP 18 10-2B

APATITY, RUSSIA
STAR



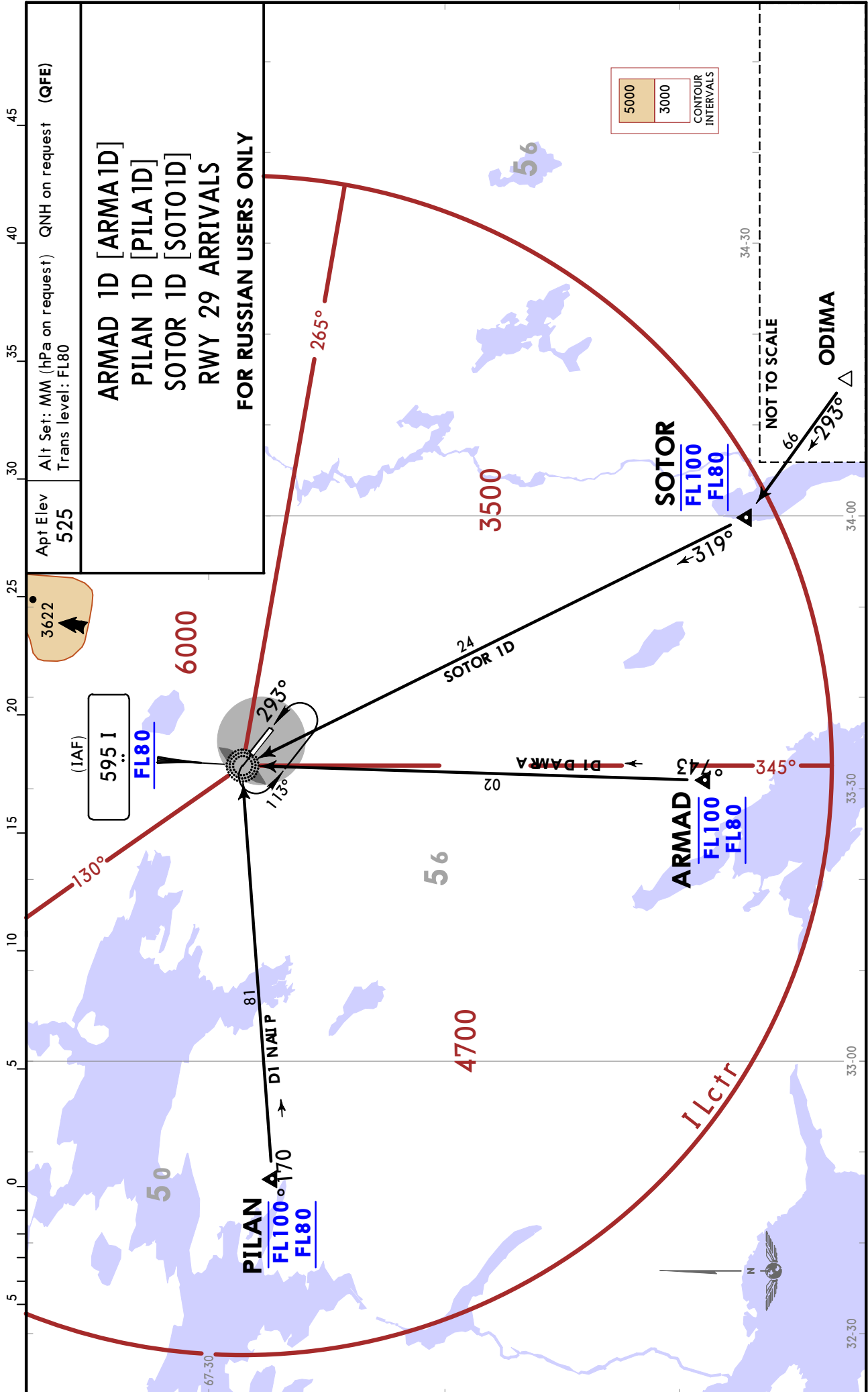
CHANGES: New airport.

© JEPPESSEN, 2018. ALL RIGHTS RESERVED.

ULMK/KVK
Khibiny

JEPPESEN
21 SEP 18 10-2C

APATITY, RUSSIA
STAR



CHANGES: New airport.

© JEPPESEN, 2018. ALL RIGHTS RESERVED.

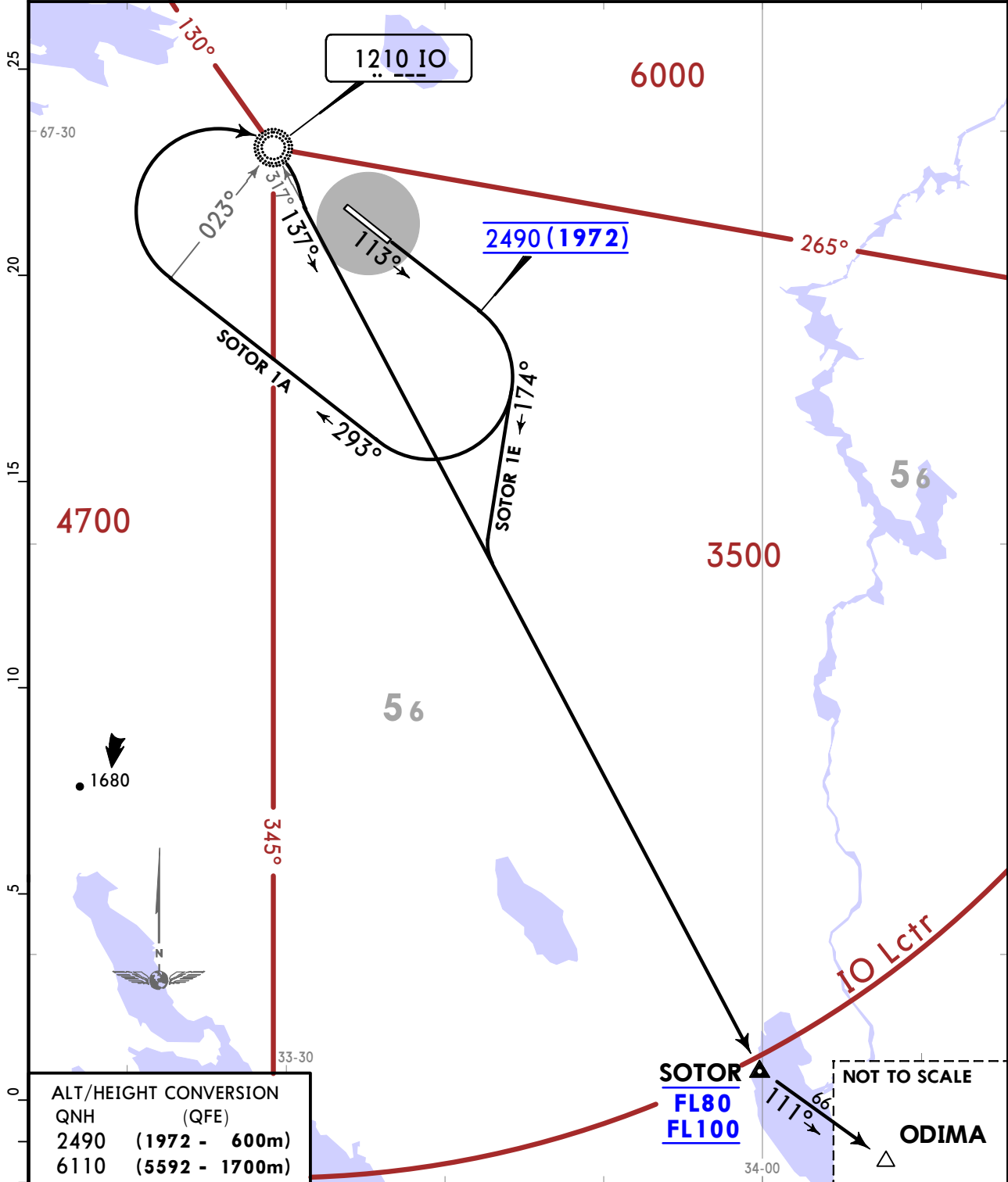
ULMK/KVK
Khibiny

JEPPESEN
21 SEP 18 (10-3)

APATITY, RUSSIA
SID

Apt Elev 525	QNH on request (QFE) Trans alt: 6110 (5592)
-----------------	--

SOTOR 1A [SOTO1A], SOTOR 1E [SOTO1E]
RWY 11 DEPARTURES
FOR RUSSIAN USERS ONLY



ALT/HEIGHT CONVERSION

QNH	(QFE)
2490 (1972 - 600m)	
6110 (5592 - 1700m)	

SOTOR 1E
This SID requires a minimum climb gradient of 7.2% up to FL80 to SOTOR.

Gnd speed-KT	75	100	150	200	250	300
7.2% V/V (fpm)	547	729	1094	1458	1823	2187

SID	ROUTING
SOTOR 1A	Climb straight ahead to 2490 (1972), turn RIGHT, 293° track, after passing 023° bearing to IO turn RIGHT to IO, turn RIGHT, intercept 137° bearing from IO to SOTOR.
SOTOR 1E	Climb straight ahead to 2490 (1972), turn RIGHT, 174° track, intercept 317° bearing from IO to SOTOR.

ULMK/KVK
Khibiny

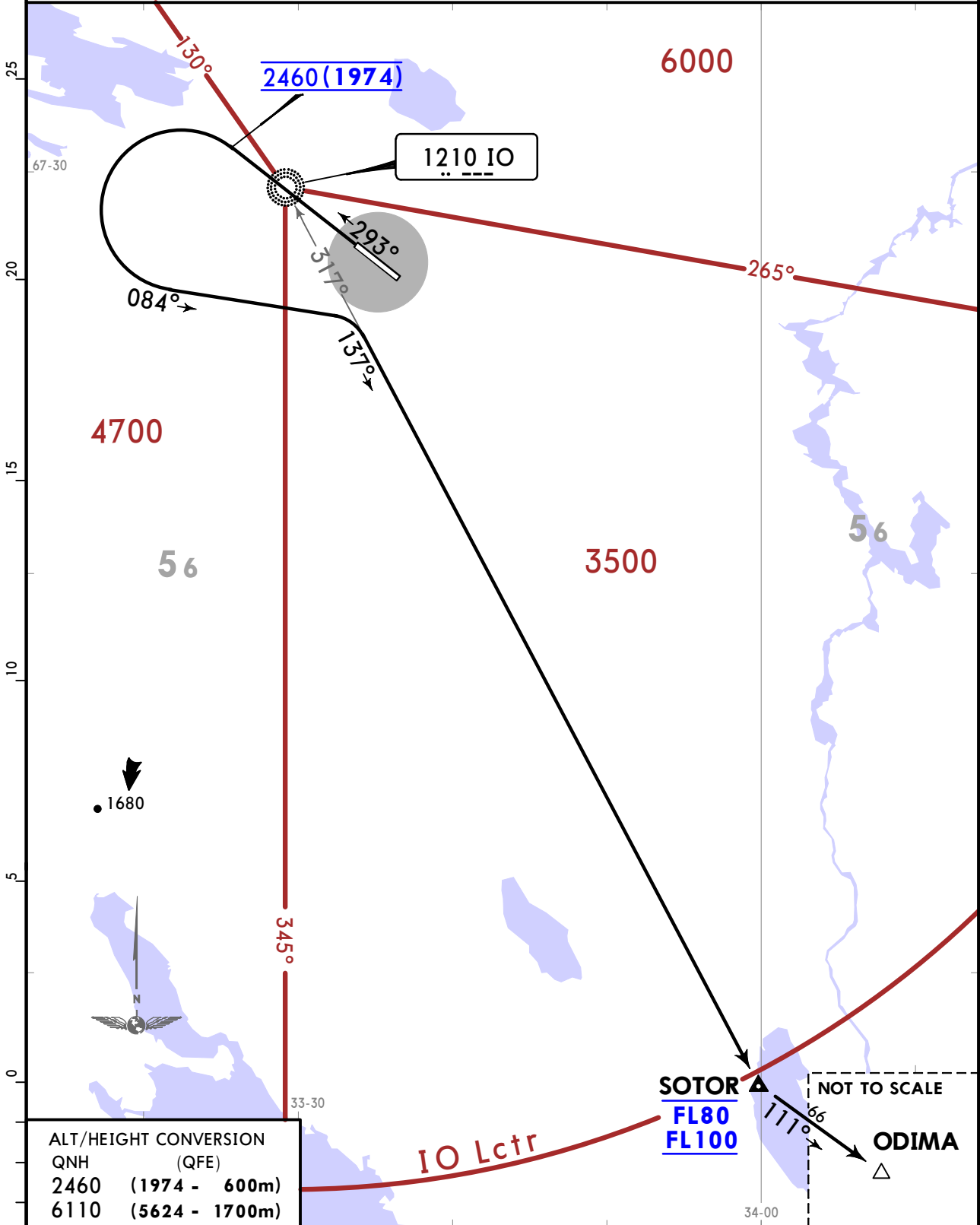
JEPPESEN
21 SEP 18 10-3A

APATITY, RUSSIA

SID

Apt Elev 525
QNH on request (QFE)
Trans alt: 6110 (5624)

SOTOR 1B [SOTO1B]
RWY 29 DEPARTURE
FOR RUSSIAN USERS ONLY



ALT/HEIGHT CONVERSION
QNH (QFE)
2460 (1974 - 600m)
6110 (5624 - 1700m)

This SID requires a minimum climb gradient of 3.5% up to FL80 to SOTOR.

Gnd speed-KT	75	100	150	200	250	300
3.5% V/V (fpm)	266	354	532	709	886	1063

ROUTING

Climb straight ahead to 2460 (1974), turn LEFT, but not before IO, 084° track, turn RIGHT, intercept 137° bearing from IO to SOTOR.

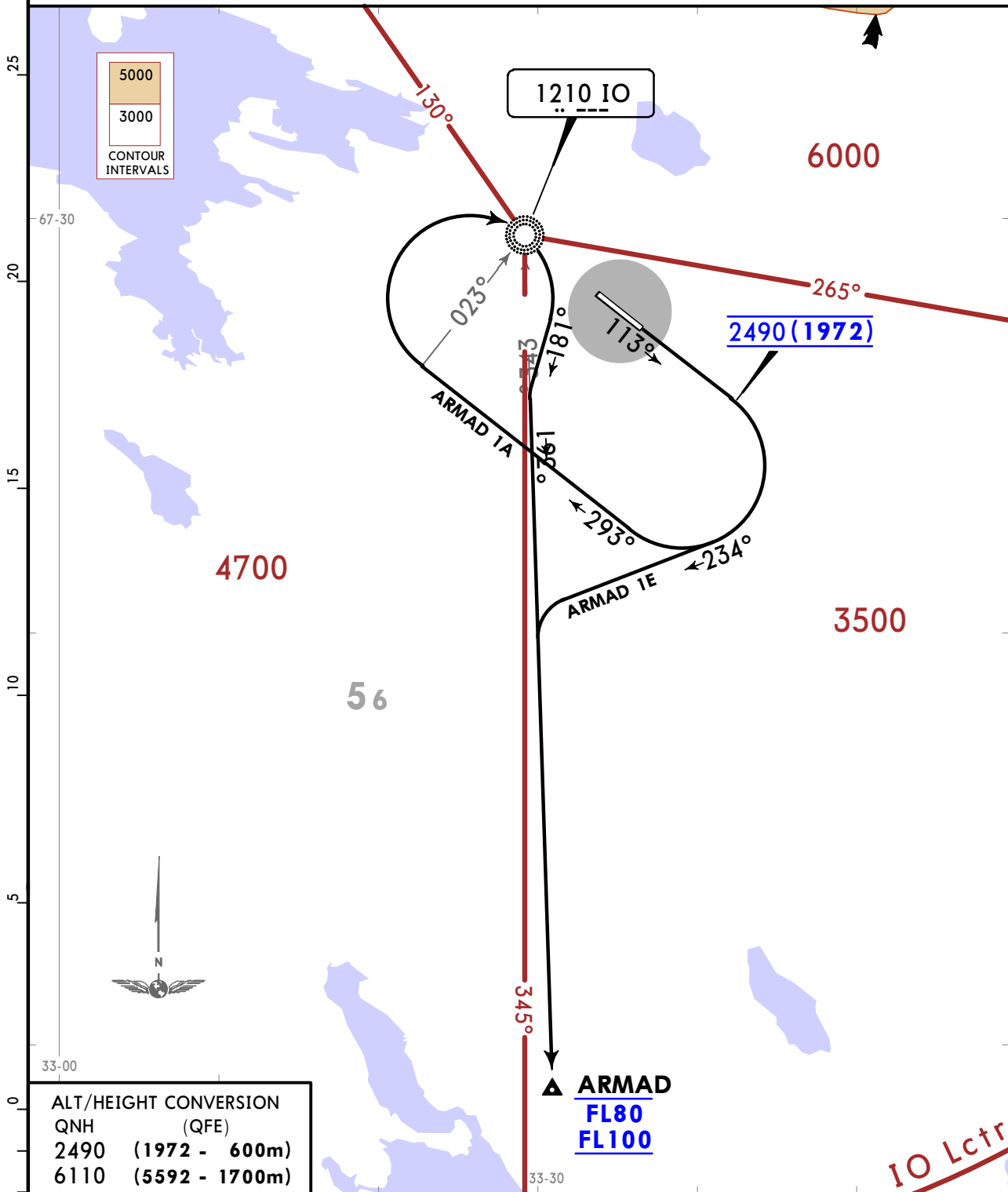
ULMK/KVK
Khibiny

JEPPESEN
21 SEP 18 10-3B

APATITY, RUSSIA
SID

Apt Elev 525 QNH on request (QFE)
Trans alt: 6110 (5592)

ARMAD 1A [ARMA1A], ARMAD 1E [ARMA1E]
RWY 11 DEPARTURES
FOR RUSSIAN USERS ONLY



ALT/HEIGHT CONVERSION
QNH (QFE)

2490	(1972 - 600m)
6110	(5592 - 1700m)

These SIDs require minimum climb gradients of

ARMAD 1A: 3.6% up to FL80 to ARMAD.
ARMAD 1E: 6.6% up to FL80 to ARMAD.

Gnd speed-KT	75	100	150	200	250	300
3.6% V/V (fpm)	273	365	547	729	911	1094
6.6% V/V (fpm)	501	668	1003	1337	1671	2005

SID	ROUTING
ARMAD 1A	Climb straight ahead to 2490 (1972), turn RIGHT, 293° track, after passing 023° bearing to IO turn RIGHT to IO, 181° track, turn LEFT, intercept 163° bearing from IO to ARMAD.
ARMAD 1E	Climb straight ahead to 2490 (1972), turn RIGHT, 234° track, turn LEFT, intercept 163° bearing from IO to ARMAD.

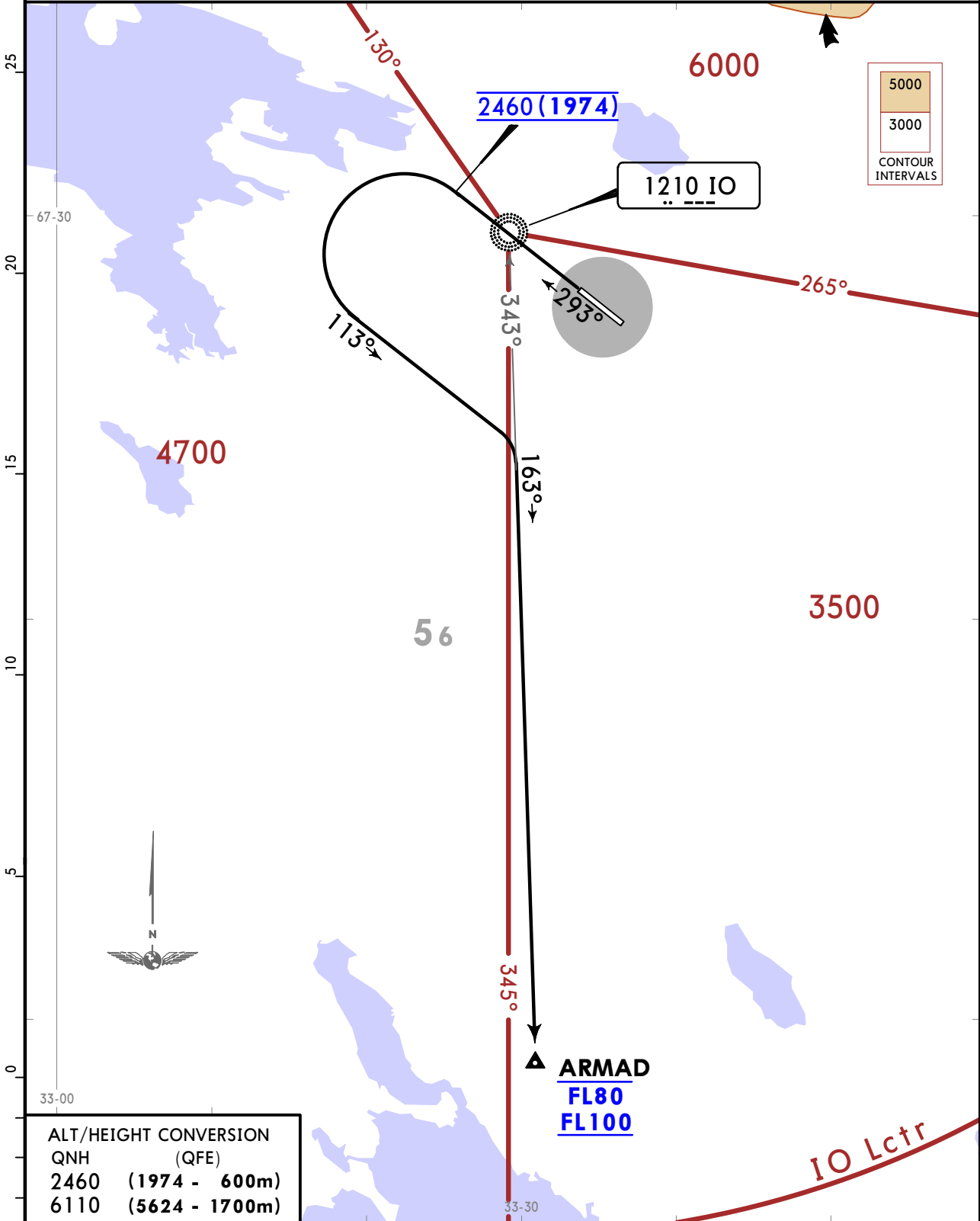
ULMK/KVK
KHIBINY

JEPPESEN
 21 SEP 18 **(10-3C)**

APATITY, RUSSIA
SID

Apt Elev 525	QNH on request (QFE) Trans alt: 6110 (5624)
------------------------	--

ARMAD 1B [ARMA1B]
RWY 29 DEPARTURE
FOR RUSSIAN USERS ONLY



ALT/HEIGHT CONVERSION	
QNH	(QFE)
2460	(1974 - 600m)
6110	(5624 - 1700m)

This SID requires a minimum climb gradient of 4.3% up to FL80 to ARMAD.

Gnd speed-KT	75	100	150	200	250	300
4.3% V/V (fpm)	327	435	653	871	1089	1306

ROUTING

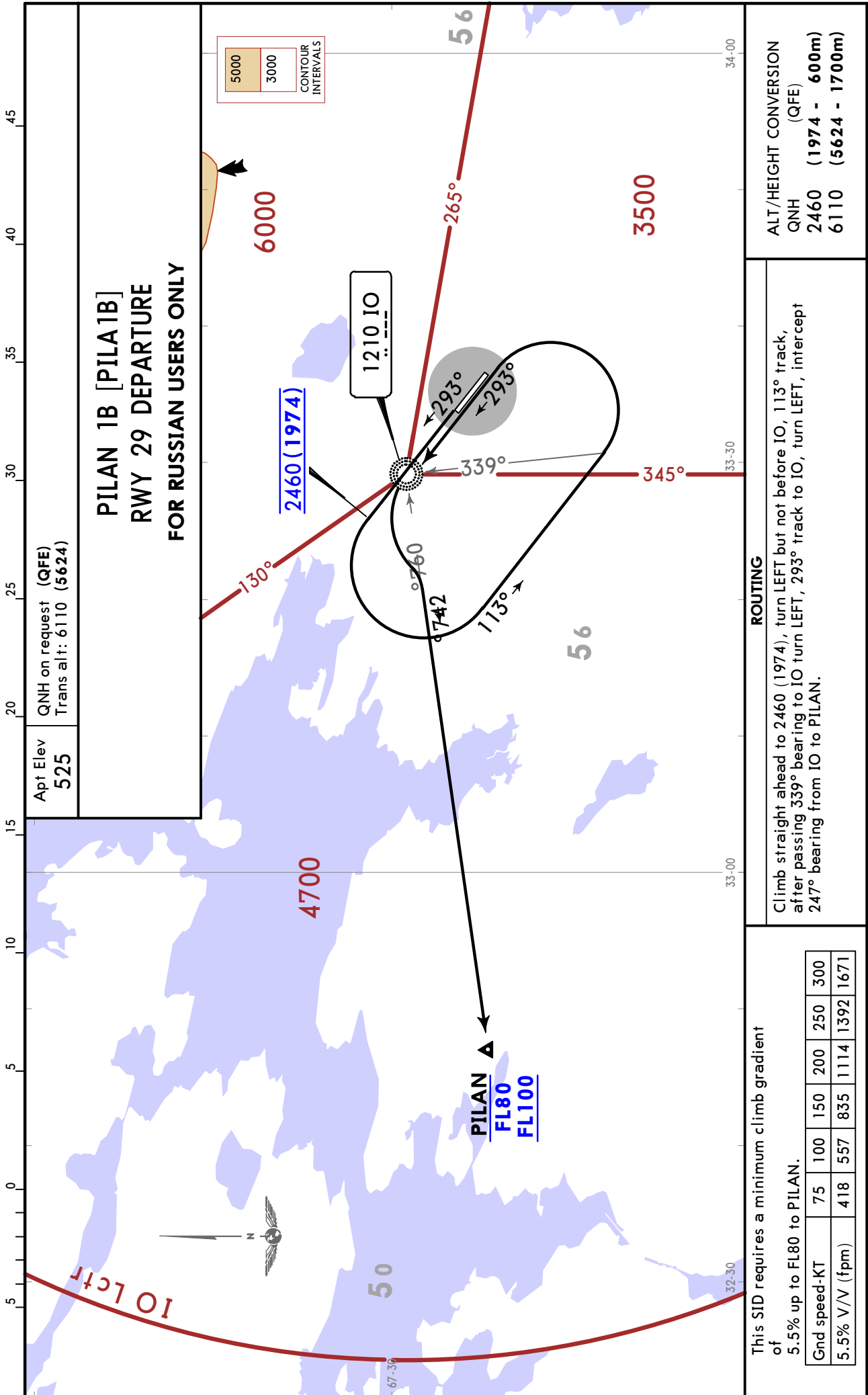
Climb straight ahead to 2460 (1974), turn LEFT, but not before IO, 113° track, turn RIGHT, intercept 163° bearing from IO to ARMAD.

CHANGES: New airport.

ULMK/KVK
Khibiny

JEPPesen
21 SEP 18 10-3E

APATITY, RUSSIA
SID



ULMK/KVK

Apt Elev 525'
N67 27.8 E033 35.1

JEPPesen

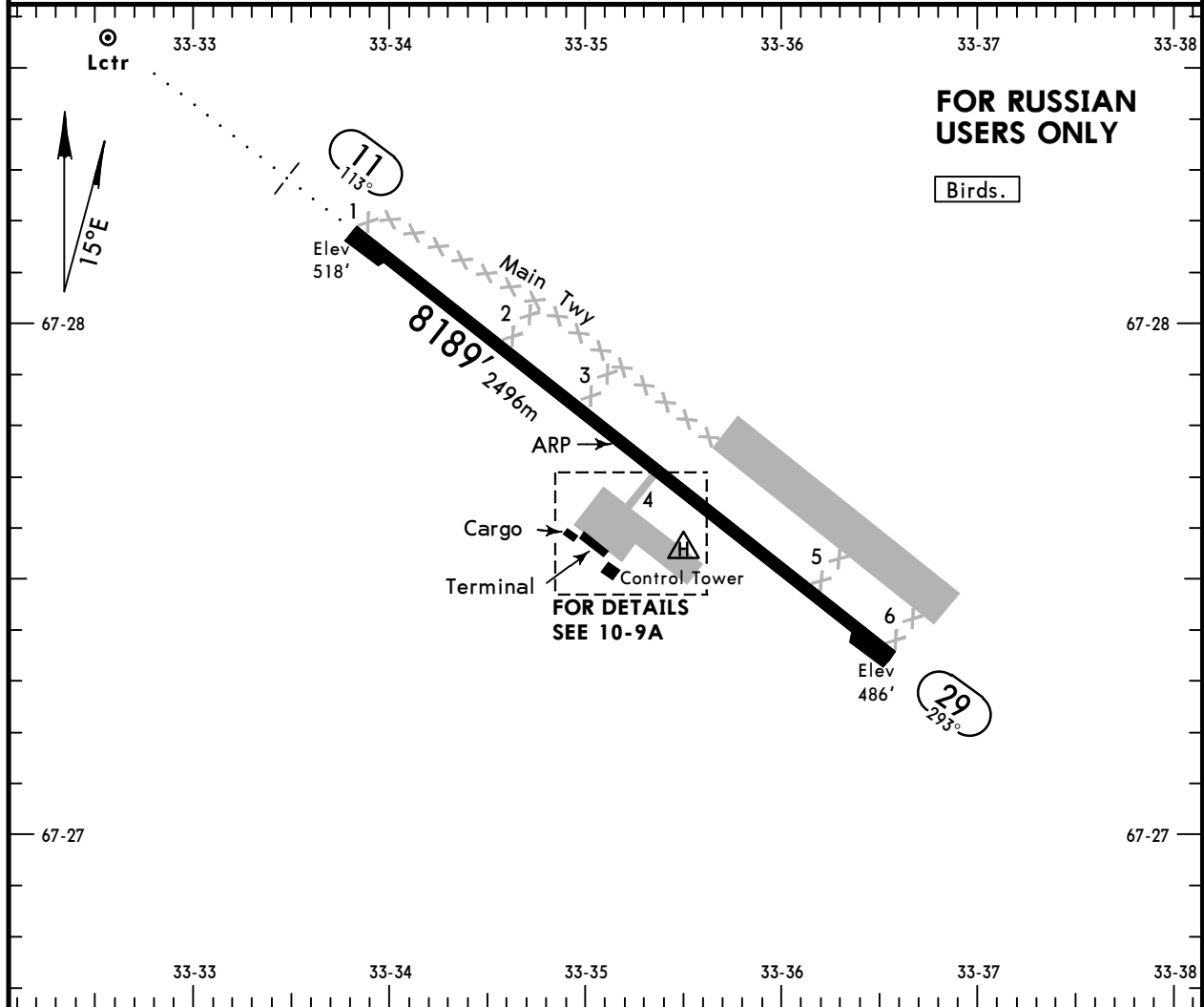
21 SEP 18 (10-9)

APATITY, RUSSIA

KHIBINY

*TALOVKA Vyshka (TWR)

121.2



ADDITIONAL RUNWAY INFORMATION

RWY	HIRL (60m)	ALS	USABLE LENGTHS LANDING BEYOND		TAKE-OFF	WIDTH
			Threshold	Glide Slope		
11					①	138' 42m
29						

① TAKE-OFF RUN AVAILABLE

RWY 11:

From rwy head 7861' (2396m)
twy 4 int 3832' (1168m)

RWY 29:

From rwy head 7861' (2396m)
twy 4 int 4357' (1328m)

LOW VISIBILITY PROCEDURES (LVP)

LVP shall be initiated when RVR is less than 550m.

Flight crews will be informed by tower controller on first radio contact if LVP is in progress.

In LVP conditions pilots of arriving acft must report rwy vacated after landing.

LVP shall be canceled if RVR is 550m or more during two follow-up observations with no downward tendency.

TAKE-OFF

AIR CARRIER (JAA)

All Rways

	LVP must be in force RCLM (DAY only) or RL	RCLM (DAY only) or RL
A		
B	250m	400m
C		
D	300m	

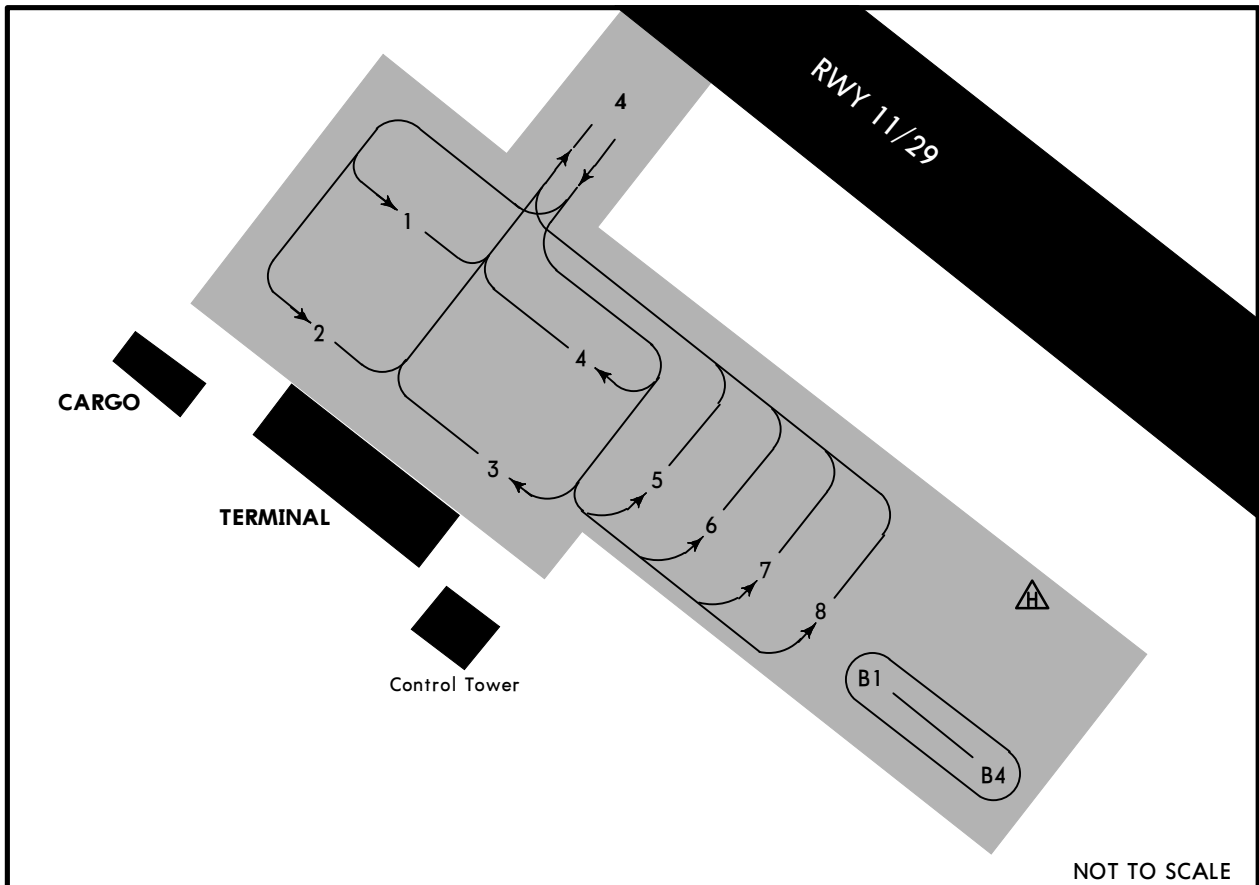
ULMK/KVK

JEPPESEN

APATITY, RUSSIA

21 SEP 18 (10-9A)

KHIBINY



INS COORDINATES

STAND No.	COORDINATES		
1	N67 27.6 E033 35.0		
2	N67 27.6 E033 34.9		
3, 4	N67 27.6 E033 35.0		
5 thru 7	N67 27.6 E033 35.2		
8	N67 27.6 E033 35.3		

Acft treatment with de-icing fluids is carried out on stands 1 thru 8.
Stands 1 thru 8 usable for helicopters.

ULMK/KVK



Standard
APATITY, RUSSIA
KHIBNY

STRAIGHT-IN RWY		A	B	C	D
11	① RNAV (GNSS)	990' (472')	990' (472')	990' (472')	990' (472')
		R1500m	R1500m	R2000m	R2000m
	ALS out	R1500m	R1500m	R2200m	R2200m
	① 2 NDB	1010' (492')	1010' (492')	1010' (492')	1010' (492')
	R1500m	R1500m	R2100m	R2100m	
	With FMS	R1500m	R1500m	R2300m	R2300m
	ALS out	R1500m	R1500m	R2300m	R2300m
	2 NDB	1010' (492')	1010' (492')	1010' (492')	1010' (492')
	R2300m	R2300m	R2500m	R2500m	
	ALS out	R2500m	R2500m	R2700m	R2700m
	NDB	1290' (772')	1290' (772')	1290' (772')	1290' (772')
	R3600m	R3600m	R3800m	R3800m	
	ALS out	R3800m	R3800m	R4000m	R4000m
29	① RNAV (GNSS)	810' (324')	810' (324')	810' (324')	810' (324')
		R1500m	R1500m	R1500m	R1500m
	① NDB	1280' (794')	1280' (794')	1280' (794')	1280' (794')
	R1500m	R1500m	R2400m	R2400m	
	NDB	1280' (794')	1280' (794')	1280' (794')	1280' (794')
	R3800m	R3800m	R4000m	R4000m	

① Continuous Descent Final Approach.

CIRCLE-TO-LAND	100 KT	135 KT	180 KT	205 KT
After RNAV apch	1220' (695')	1280' (755')	1380' (855')	1510' (985')
	V1500m	V1600m	V2400m	V3600m

TAKE-OFF

	Low Visibility Take-off		
	Day: RL & RCLM Night: RL	Day: RL or RCLM Night: RL	Adequate vis ref (Day only)
A	R300m	400m	500m
B			
C			
D			

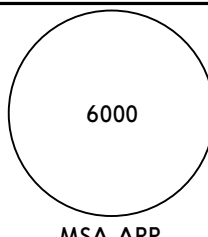
ULMK/KVK
KHIBINY

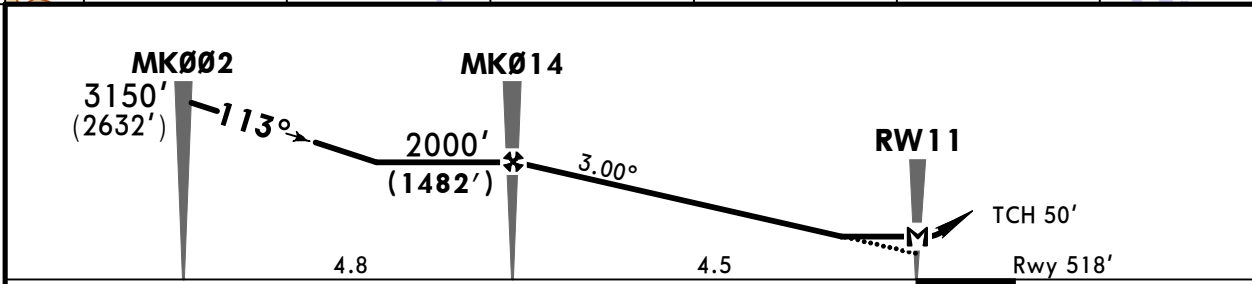
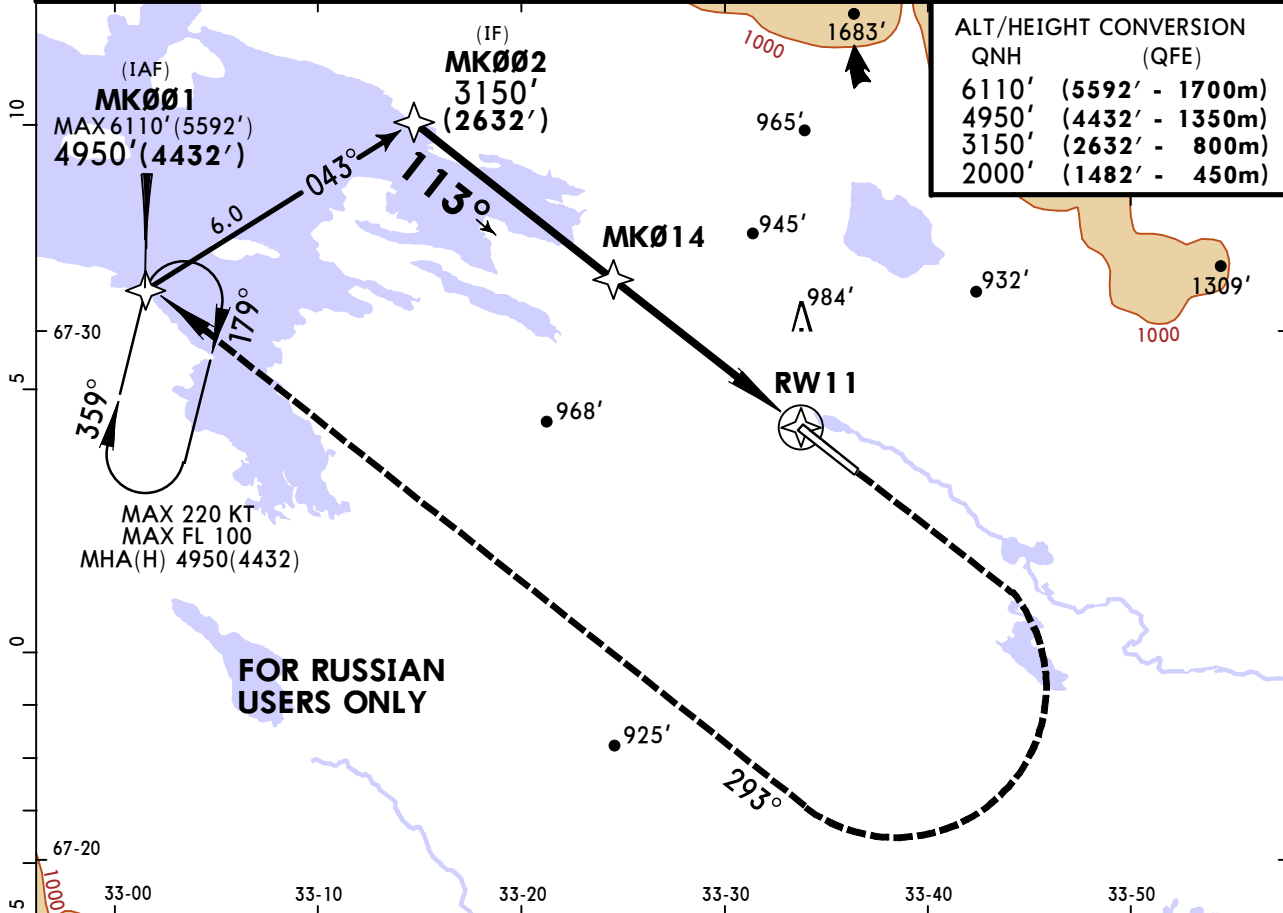
JEPPESEN
21 SEP 18 **(12-1)**

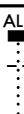

APATITY, RUSSIA
RNAV (GNSS) Rwy 11

*TALOVKA Vyshka (TWR)

BRIEFING STRIP™

121.2					
RNAV	Final Apch Crs 113°	Minimum Alt MK014 2000' (1482')	MDA(H) 990' (472')	Apt Elev 525' Rwy 518'	
MISSED APCH: Climb STRAIGHT AHEAD to 2000' (1482'), then turn RIGHT to MK001 climbing to 4950' (4432') or above.					MSA ARP
Alt Set: MM (hPa on req)		QNH on req (QFE)		Trans level: FL 80	
					Trans alt: 6110' (5592')



Gnd speed-Kts	70	90	100	120	140	160	ALS 	2000' (1482')	4950' (4432')	MK001 
Descent Angle	3.00°	372	478	531	637	743		849	↑	
MAP at RW11										

STRAIGHT-IN LANDING RWY 11				CIRCLE-TO-LAND			
MDA(H) 990' (472')							
				ALS out			
A				1600m	Max Kts		
B					100	1220' (695')	1600m
C					135	1280' (755')	2000m
D					180	1380' (855')	4000m
					205	1510' (985')	4800m

PANS OPS

ULMK/KVK
Khibiny

21 SEP 18 **12-2**

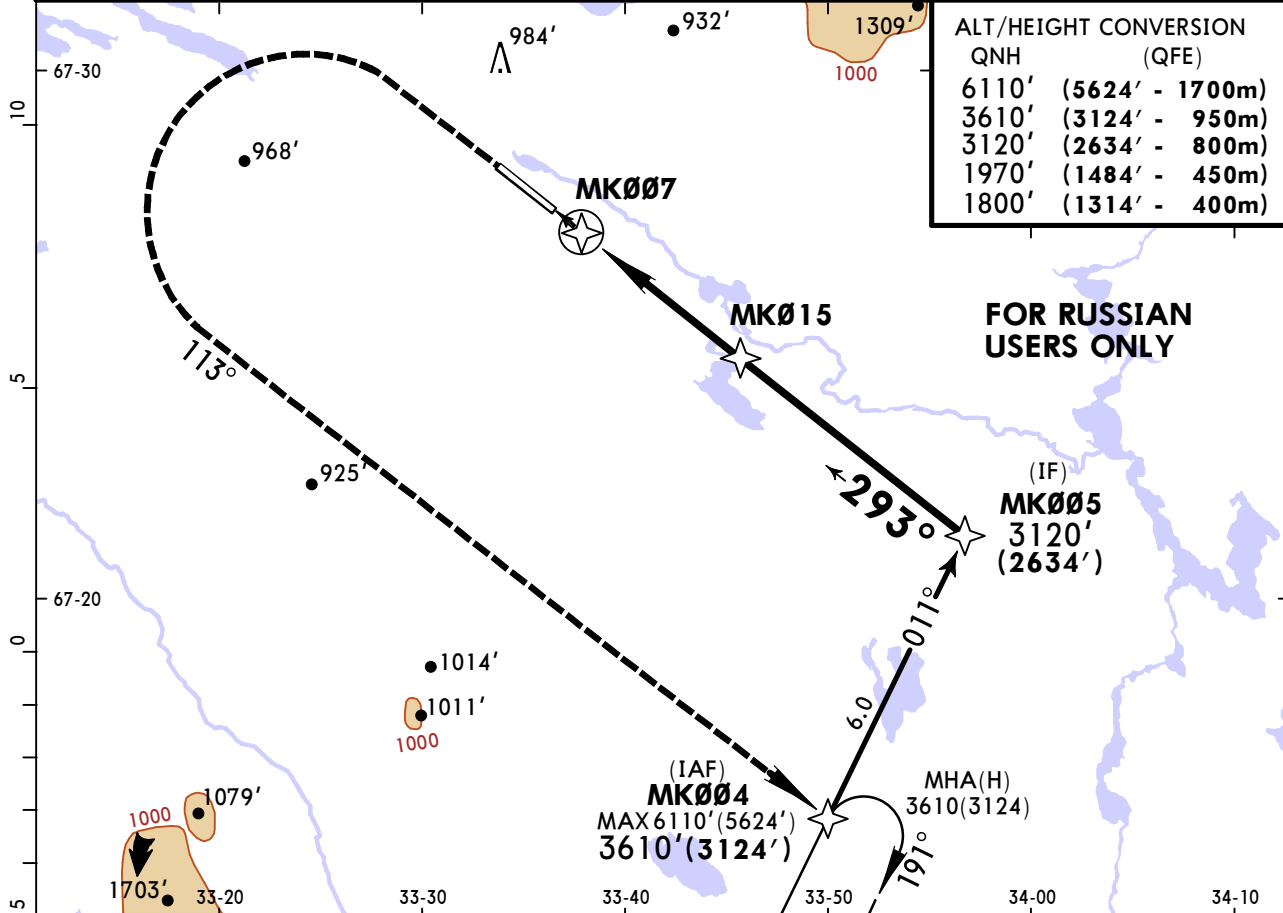
APATITY, RUSSIA
RNAV (GNSS) Rwy 29

*TALOVKA Vyshka (TWR)

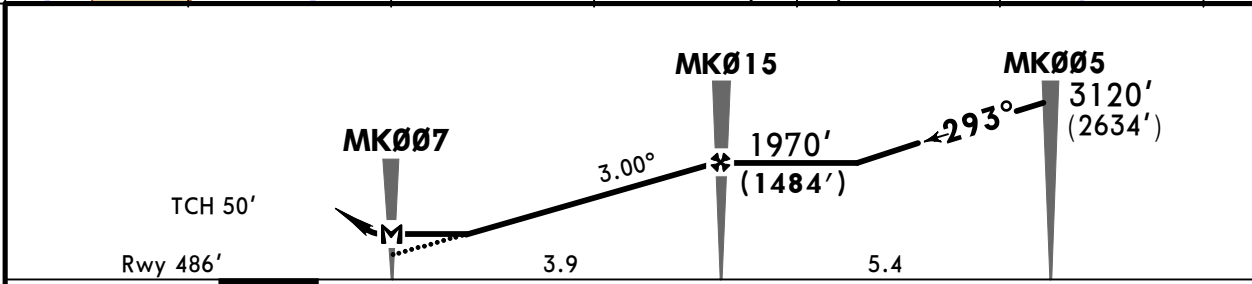
BRIEFING STRIP™

121.2						6000 MSA ARP
RNAV	Final Apch Crs 293°	Minimum Alt MK015 1970'(1484')	MDA(H) 810'(324')	Apt Elev 525'	Rwy 486'	
MISSED APCH: Climb STRAIGHT AHEAD to 1800'(1314'), then turn LEFT to MK004 climbing to 3610'(3124') or above.						

Alt Set: MM (hPa on req) QNH on req (QFE) Trans level: FL 80 Trans alt: 6110' (5624')



FOR RUSSIAN USERS ONLY



Gnd speed-Kts	70	90	100	120	140	160		1800' (1314')	3610' (3124')	MK004
Descent Angle	3.00°	372	478	531	637	743	849			
MAP at MK007										

STRAIGHT-IN LANDING RWY 29		CIRCLE-TO-LAND	
MDA(H) 810'(324')		Max Kts	MDA(H)
A	1600m	100	1220' (695') 1600m
B		135	1280' (755') 2000m
C		180	1380' (855') 4000m
D		205	1510' (985') 4800m

PANS OPS

ULMK/KVK
Khibiny

JEPPesen
21 SEP 18 **16-1**

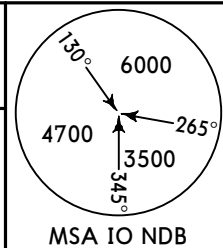
APATITY, RUSSIA
2 NDB Rwy 11

*TALOVKA Vyshka (TWR)

121.2

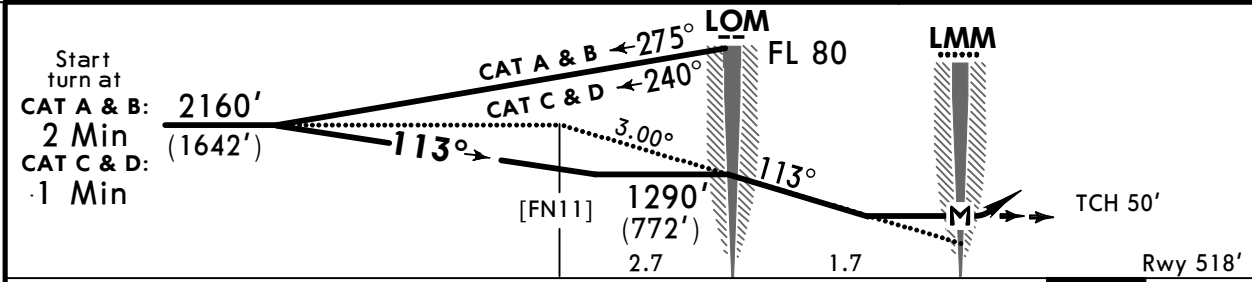
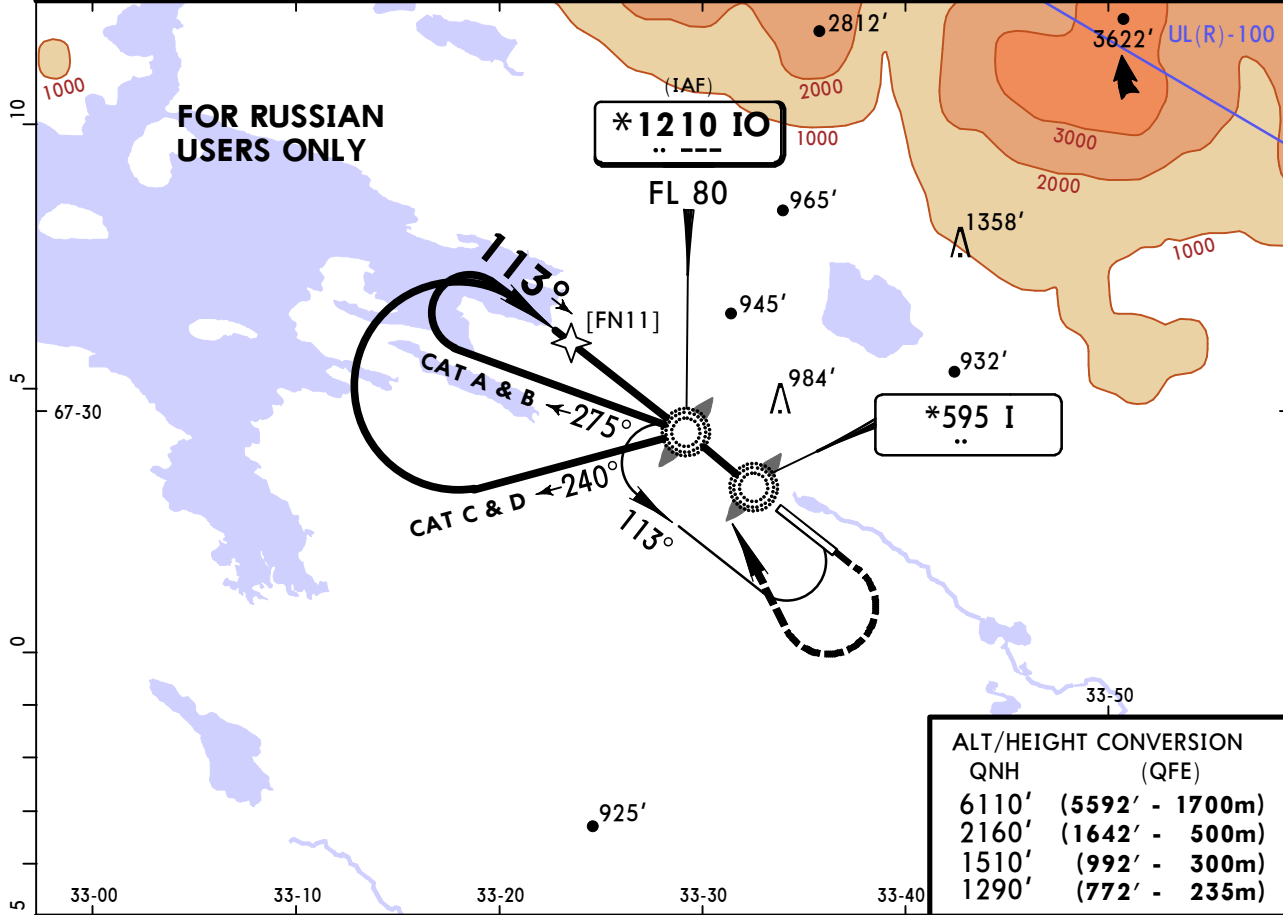
BRIEFING STRIP™

NDB IO *1210	Final Apch Crs 113°	No FAF	MDA(H) 1010' (492')	Apt Elev 525' Rwy 518'
------------------------	-------------------------------	--------	-------------------------------	---------------------------



MISSED APCH: Climb STRAIGHT AHEAD to 1510' (992'), then turn RIGHT to IO NDB climbing to 2160' (1642'), then according to chart or to holding area.

Alt Set: MM (hPa on req) QNH on req (QFE) Trans level: FL 80 Trans alt: 6110' (5592')



Gnd speed-Kts	70	90	100	120	140	160	ALS	1510' (992')	2160' (1642')	IO 1210
Descent Angle 3.00°	372	478	531	637	743	849				

STRAIGHT-IN LANDING RWY 11

MDA(H) **1010' (492')**

ALS out

PANS OPS

A	1600m
B	2000m
C	2400m
D	

ULMK/KVK
KHIBINY

JEPPESSEN
 21 SEP 18 **16-2**

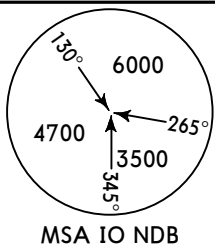
APATITY, RUSSIA
NDB Rwy 11

*TALOVKA Vyshka (TWR)

121.2

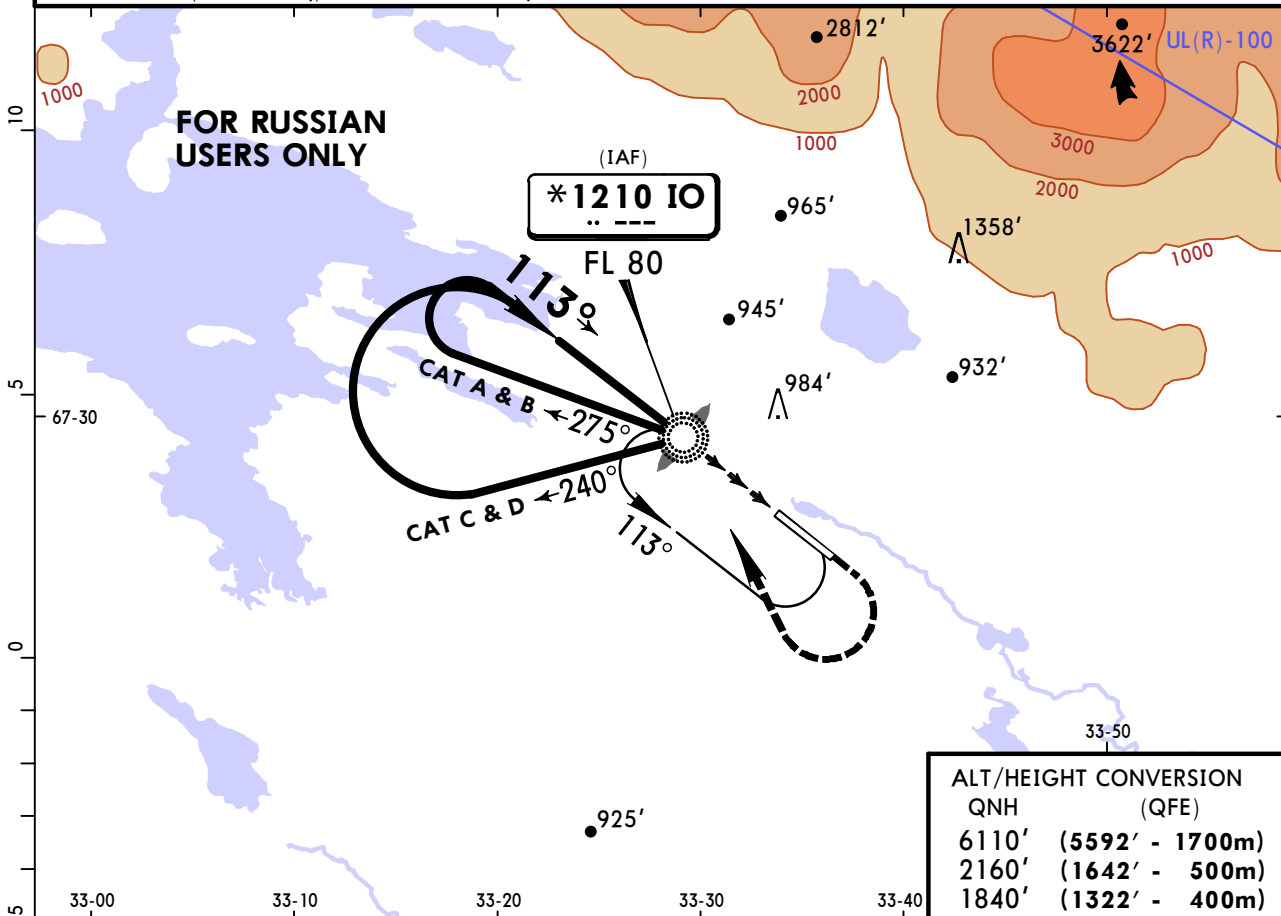
BRIEFING STRIP™

NDB IO *1210	Final Apch Crs 113°	No FAF	MDA(H) 1290' (772')	Apt Elev 525' Rwy 518'
------------------------	-------------------------------	--------	-------------------------------	---------------------------

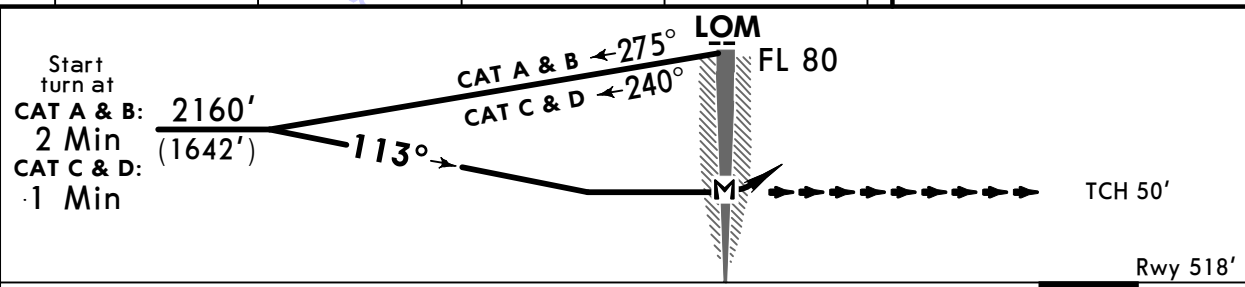


MISSED APCH: Climb STRAIGHT AHEAD to 1840' (1322'), then turn RIGHT to NDB climbing to 2160' (1642'), then according to chart or to holding area.

Alt Set: MM (hPa on req) QNH on req (QFE) Trans level: FL 80 Trans alt: 6110' (5592')



ALT/HEIGHT CONVERSION	
QNH	(QFE)
6110'	(5592' - 1700m)
2160'	(1642' - 500m)
1840'	(1322' - 400m)



MAP at LOM	ALS	1840' (1322')	2160' (1642')	IO 1210
------------	-----	---------------	---------------	---------

STRAIGHT-IN LANDING RWY 11
 MDA(H) **1290' (772')**
 ALS out

PANS OPS	Altitude
A	3200m
B	3600m
C	4000m
D	4000m

ULMK/KVK
Khibiny

JEPPesen
21 SEP 18 **16-3**

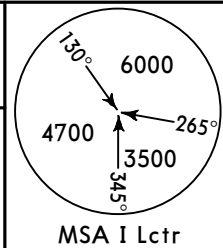
APATITY, RUSSIA
NDB Rwy 29

*TALOVKA Vyshka (TWR)

121.2

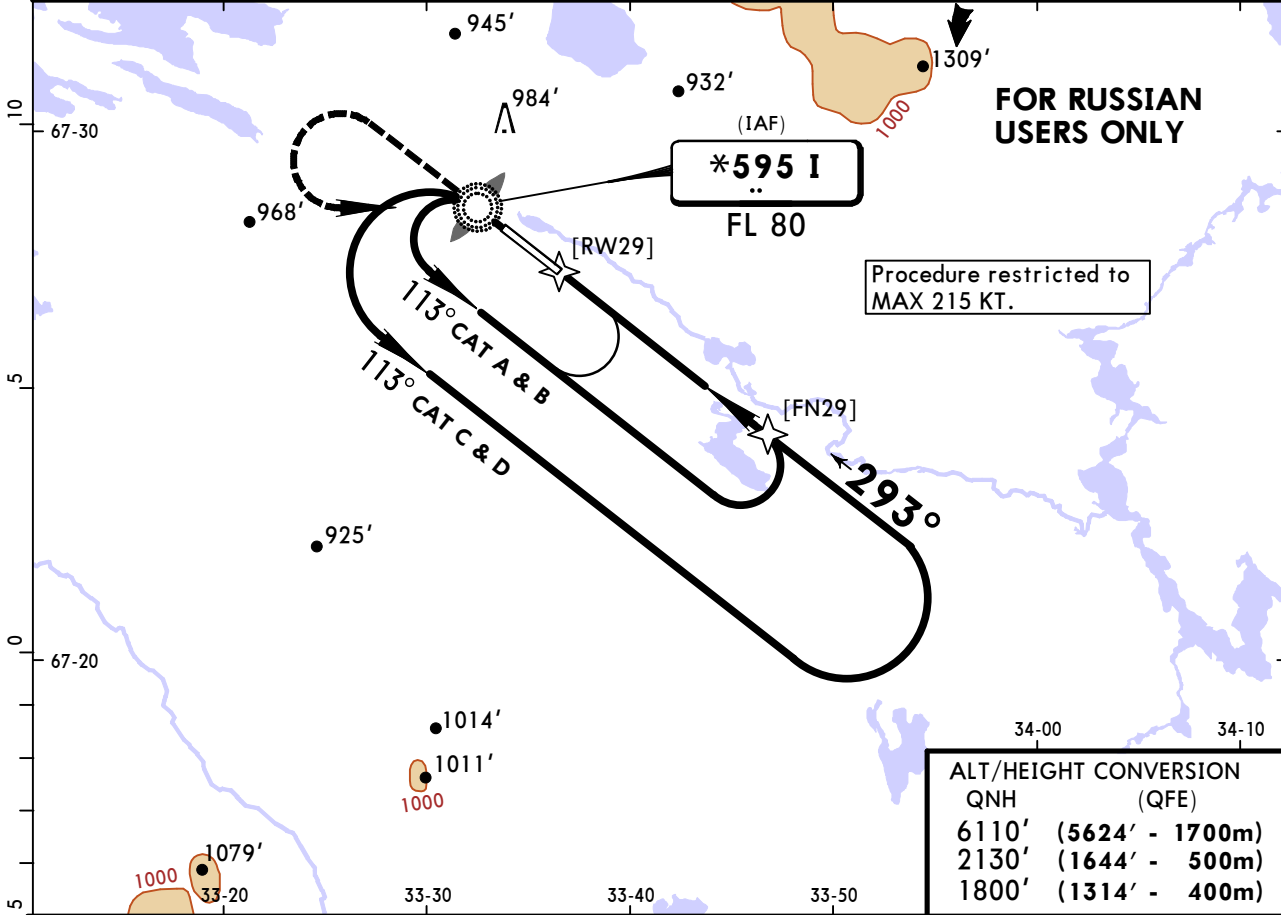
BRIEFING STRIP™

NDB I *595	Final Apch Crs 293°	No FAF	MDA(H) 1280' (794')	Appt Elev 525' Rwy 486'
-------------------------	----------------------------------	--------	-------------------------------	----------------------------



MISSED APCH: Climb STRAIGHT AHEAD to 1800' (1314'), then turn LEFT to Lctr climbing to 2130' (1644'), then according to chart or to holding area.

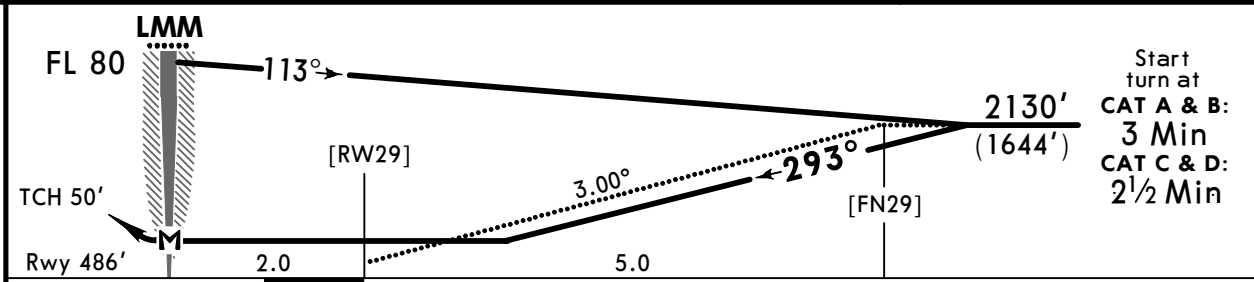
Alt Set: MM (hPa on req) QNH on req (QFE) Trans level: FL 80 Trans alt: 6110' (5624')



FOR RUSSIAN USERS ONLY

Procedure restricted to MAX 215 KT.

ALT/HEIGHT CONVERSION	QNH	(QFE)
6110'	(5624' - 1700m)	
2130'	(1644' - 500m)	
1800'	(1314' - 400m)	



Gnd speed-Kts	70	90	100	120	140	160	1800' (1314')	2130' (1644')	I 595
Descent Angle 3.00°	372	478	531	637	743	849	↑	↶	
MAP at LMM									

STRAIGHT-IN LANDING RWY 29

MDA(H) **1280' (794')**

A	1600m
B	2000m
C	3600m
D	4000m

PANS OPS

CHANGES: New Procedure.

© JEPPESEN, 2018. ALL RIGHTS RESERVED.

Chart changes since cycle 08-2019

ADD = added chart, REV = revised chart, DEL = deleted chart.

ACT	PROCEDURE IDENT	INDEX	REV DATE	EFF DATE
-----	-----------------	-------	----------	----------

APATITY, (Khibiny - ULMK)

TERMINAL CHART CHANGE NOTICES

No Chart Change Notices for Airport ULMK