

List of pages in this Trip Kit

Trip Kit Index
Airport Information For UHSN
Terminal Charts For UHSN
Revision Letter For Cycle 09-2019
Change Notices
Notebook

General Information

Location: NOGLIKI RUS
ICAO: UHSN
Lat/Long: N51° 47.0', E143° 08.5'
Elevation: 128 ft

Airport Use: Public
Daylight Savings: Not Observed
UTC Conversion: -11:00 = UTC
Magnetic Variation: 11.0° W

Fuel Types: Jet A-1
Customs: No
Airport Type: IFR
Landing Fee: Yes
Control Tower: Yes
Jet Start Unit: No
LLWS Alert: No
Beacon: No

Sunrise: 1844 Z
Sunset: 1004 Z

Runway Information

Runway: 04
Length x Width: 5741 ft x 115 ft
Surface Type: asphalt
TDZ-Elev: 127 ft
Lighting: Edge, ALS

Runway: 22
Length x Width: 5741 ft x 115 ft
Surface Type: asphalt
TDZ-Elev: 104 ft
Lighting: Edge, ALS

Communication Information

Nogliki Tower: 132.000 Non-English
Nogliki Tower: 129.000 Secondary Non-English
Nogliki Perron Ramp/Taxi: 119.000 Non-English

UHSN/NGK
NOGLIKI

JEPPESEN
19 APR 19 **10-2** Eff 25 Apr

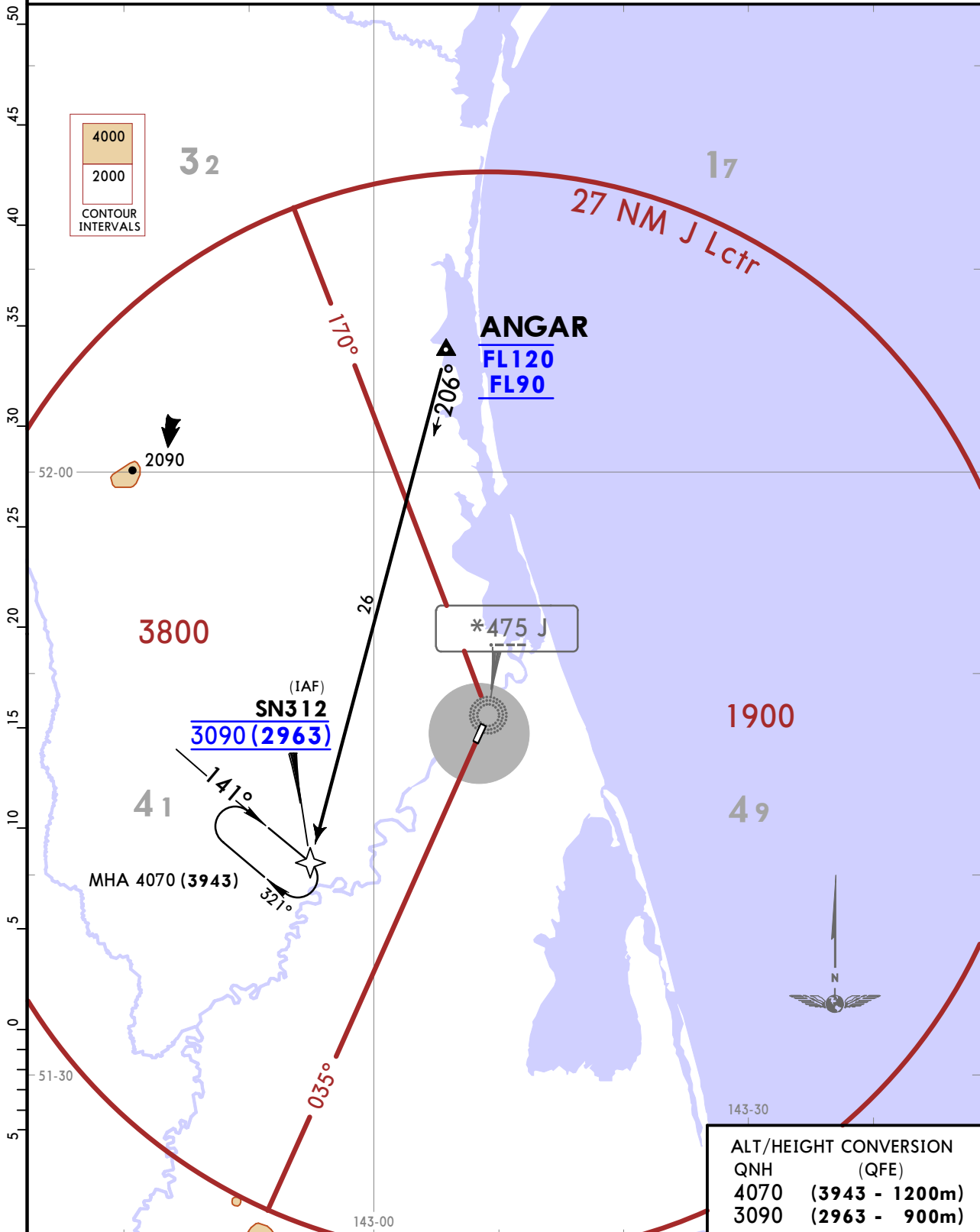
NOGLIKI, RUSSIA
RNAV STAR

Apt Elev
128

Alt Set: MM (hPa on request) QNH on request (QFE)
Trans level: FL60
FL70 if pressure is less than 731mm (974.6 hPa)

1. RNAV 1
2. GNSS
3. Approval for RNAV (GNSS) approach shall be received before passing IAF.
4. RNAV (GNSS) arrival and approach to land using GPS/GLONASS shall be carried out according to given permission by FAVT (Rosaviation).

ANGAR 1G [ANGA1G]
RWY 04 RNAV ARRIVAL
FOR RUSSIAN USERS ONLY



UHSN/NGK
NOGLIKI

JEPPESEN
19 APR 19 **(10-2A)** Eff 25 Apr

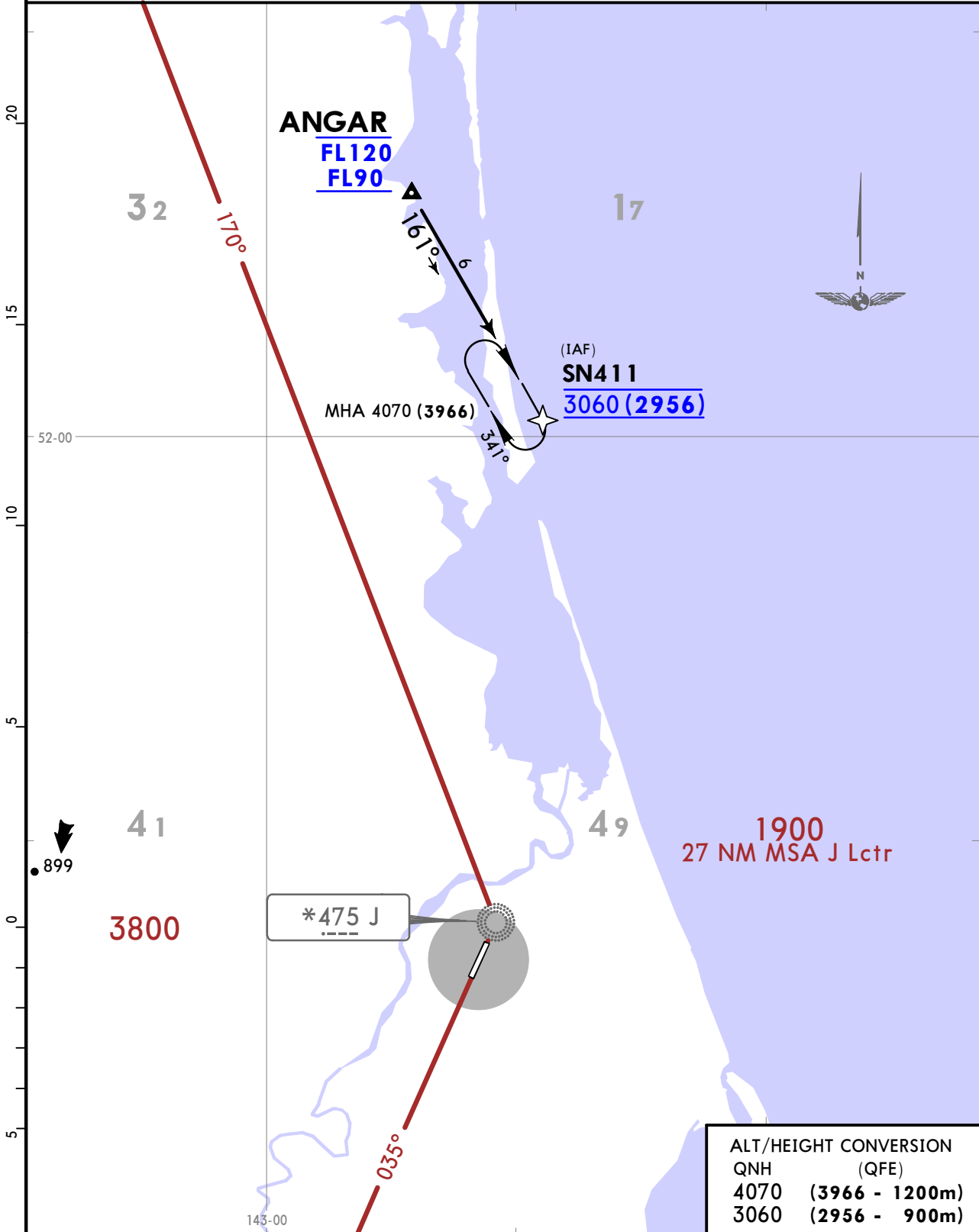
NOGLIKI, RUSSIA
RNAV STAR

Alt Set: MM (hPa on request) QNH on request (QFE)
Trans level: FL60
FL70 if pressure is less than 731mm (974.6 hPa)

Apt Elev
128

1. RNAV 1
2. GNSS
3. Approval for RNAV (GNSS) approach shall be received before passing IAF.
4. RNAV (GNSS) arrival and approach to land using GPS/GLONASS shall be carried out according to given permission by FAVT (Rosaviation).

ANGAR 2G [ANGA2G]
RWY 22 RNAV ARRIVAL
FOR RUSSIAN USERS ONLY



CHANGES: RNAV STAR redesignated & revised.

© JEPPESEN, 2018, 2019. ALL RIGHTS RESERVED.

UHSN/NGK
NOGLIKI

JEPPESSEN
19 APR 19 **10-2B** Eff 25 Apr

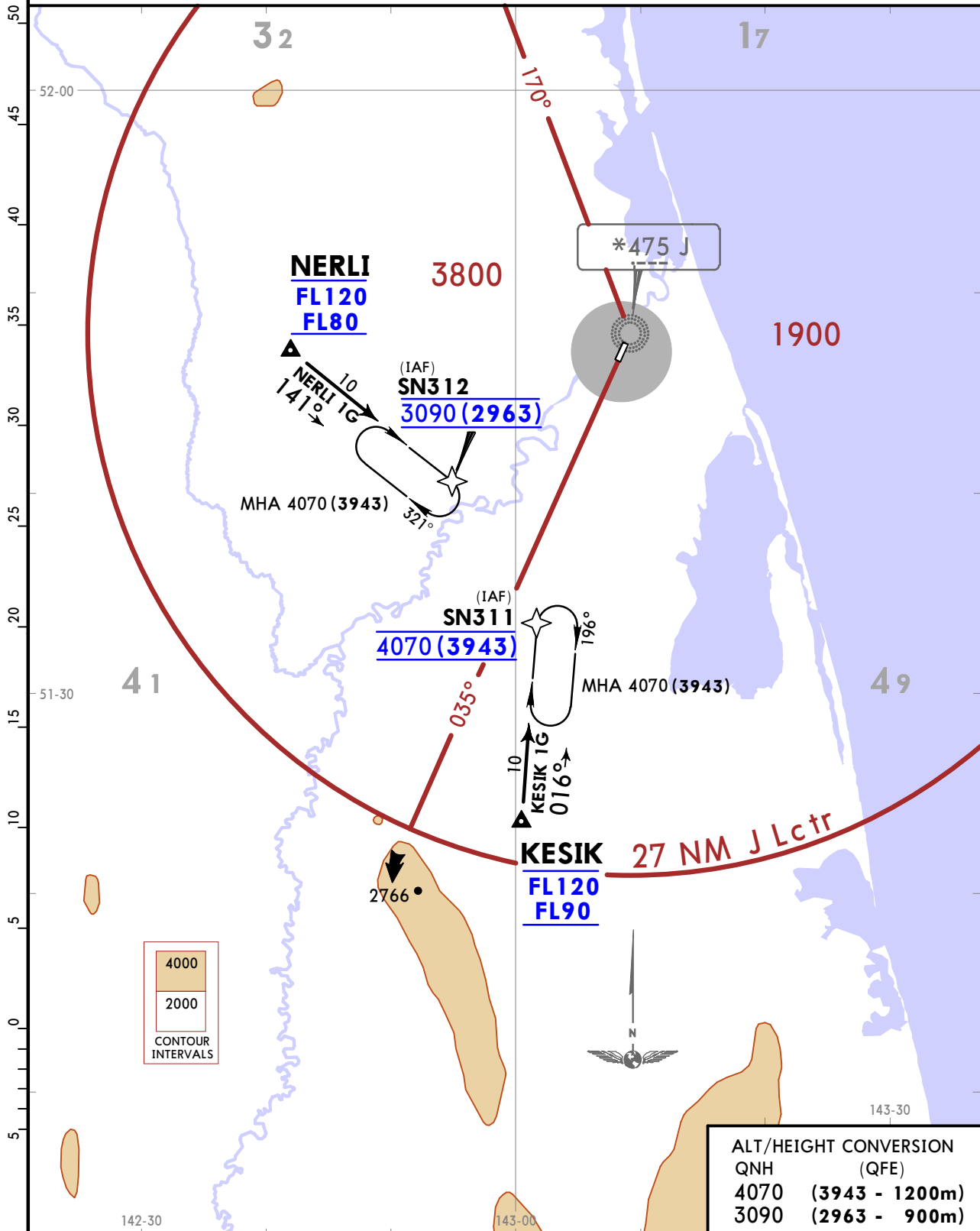
NOGLIKI, RUSSIA
RNAV STAR

Apt Elev
128

Alt Set: MM (hPa on request) QNH on request (QFE)
Trans level: FL60
FL70 if pressure is less than 731mm (974.6 hPa)

1. RNAV 1
2. GNSS
3. Approval for RNAV (GNSS) approach shall be received before passing IAF.
4. RNAV (GNSS) arrival and approach to land using GPS/GLONASS shall be carried out according to given permission by FAVT (Rosaviation).

KESIK 1G [KESI1G], NERLI 1G [NERL1G]
RWY 04 RNAV ARRIVALS
FOR RUSSIAN USERS ONLY



UHSN/NGK
NOGLIKI

JEPPESSEN

NOGLIKI, RUSSIA

19 APR 19 **10-2C** Eff 25 Apr

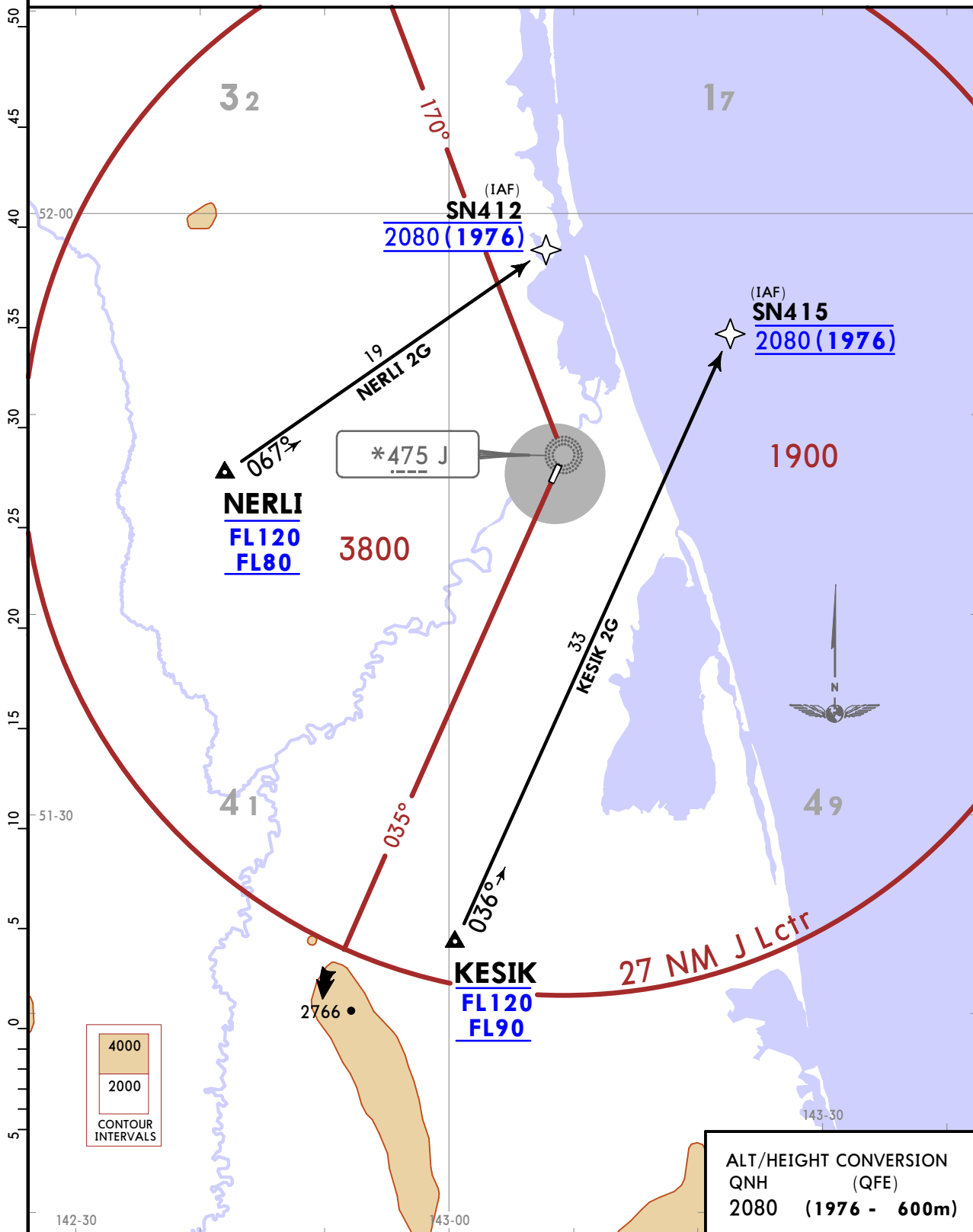
RNAV STAR

Alt Set: MM (hPa on request) QNH on request (QFE)
 Trans level: FL60
 FL70 if pressure is less than 731mm (974.6 hPa)

Apt Elev
128

1. RNAV 1
2. GNSS
3. Approval for RNAV (GNSS) approach shall be received before passing IAF.
4. RNAV (GNSS) arrival and approach to land using GPS/GLONASS shall be carried out according to given permission by FAVT (Rosaviation).

KESIK 2G [KESI2G], NERLI 2G [NERL2G]
RWY 22 RNAV ARRIVALS
FOR RUSSIAN USERS ONLY



UHSN/NGK
NOGLIKI

JEPPESEN

NOGLIKI, RUSSIA

19 APR 19 **10-2D** Eff 25 Apr

STAR

Apt Elev
128

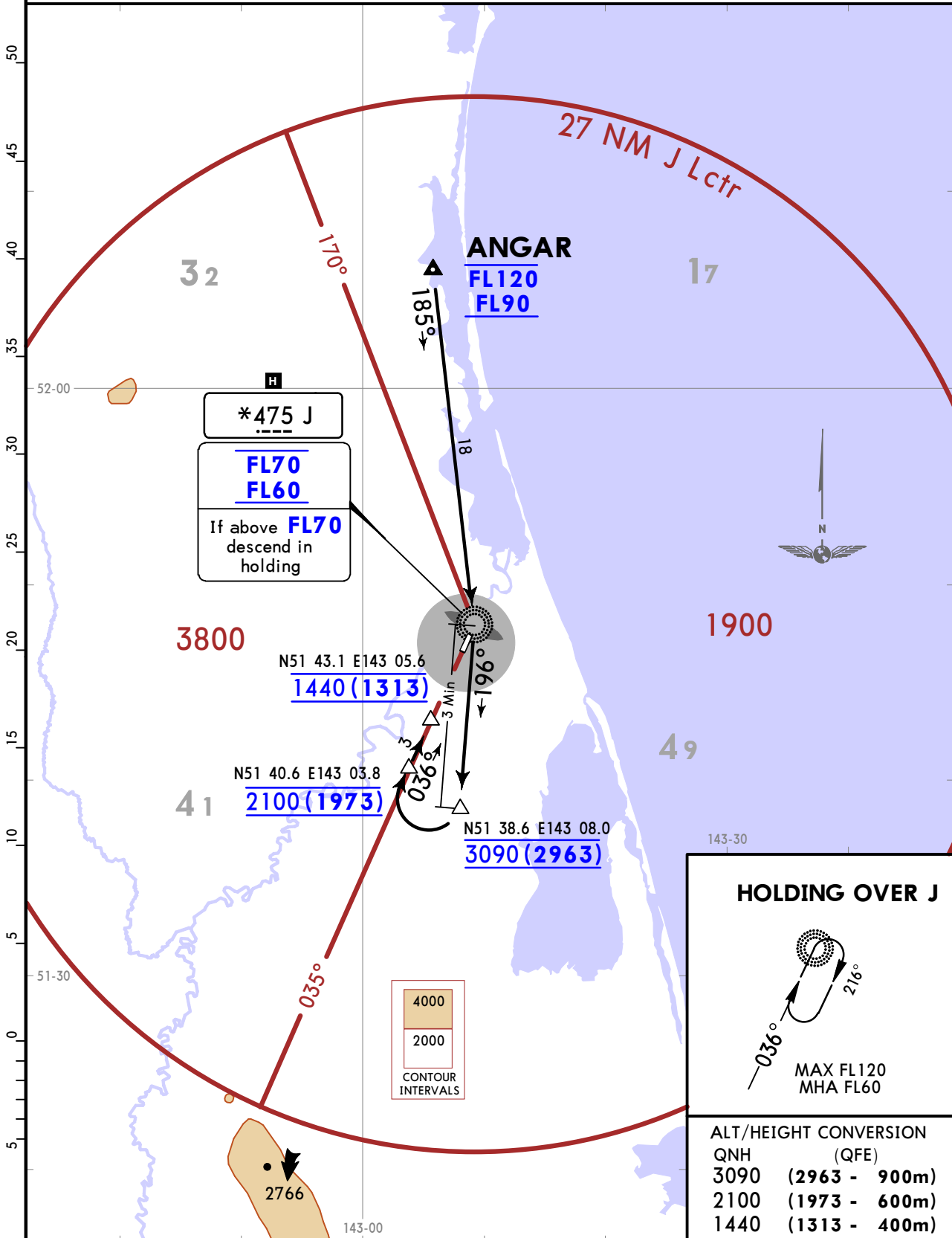
Alt Set: MM (hPa on request) QNH on request (QFE)
Trans level: FL60
FL70 if pressure is less than 731mm (974.6 hPa)

1. After passing J execute teardrop procedure turn.
2. During procedure turn descent with a minimum descent gradient of 6.7% to minimum descending altitude. If unable to comply, descent shall be carried out in holding over J.

ANGAR 1A [ANGA1A]
RWY 04 ARRIVAL

CAT C & D

FOR RUSSIAN USERS ONLY



UHSN/NGK
NOGLIKI

JEPPESSEN

NOGLIKI, RUSSIA

19 APR 19 **10-2E** Eff 25 Apr

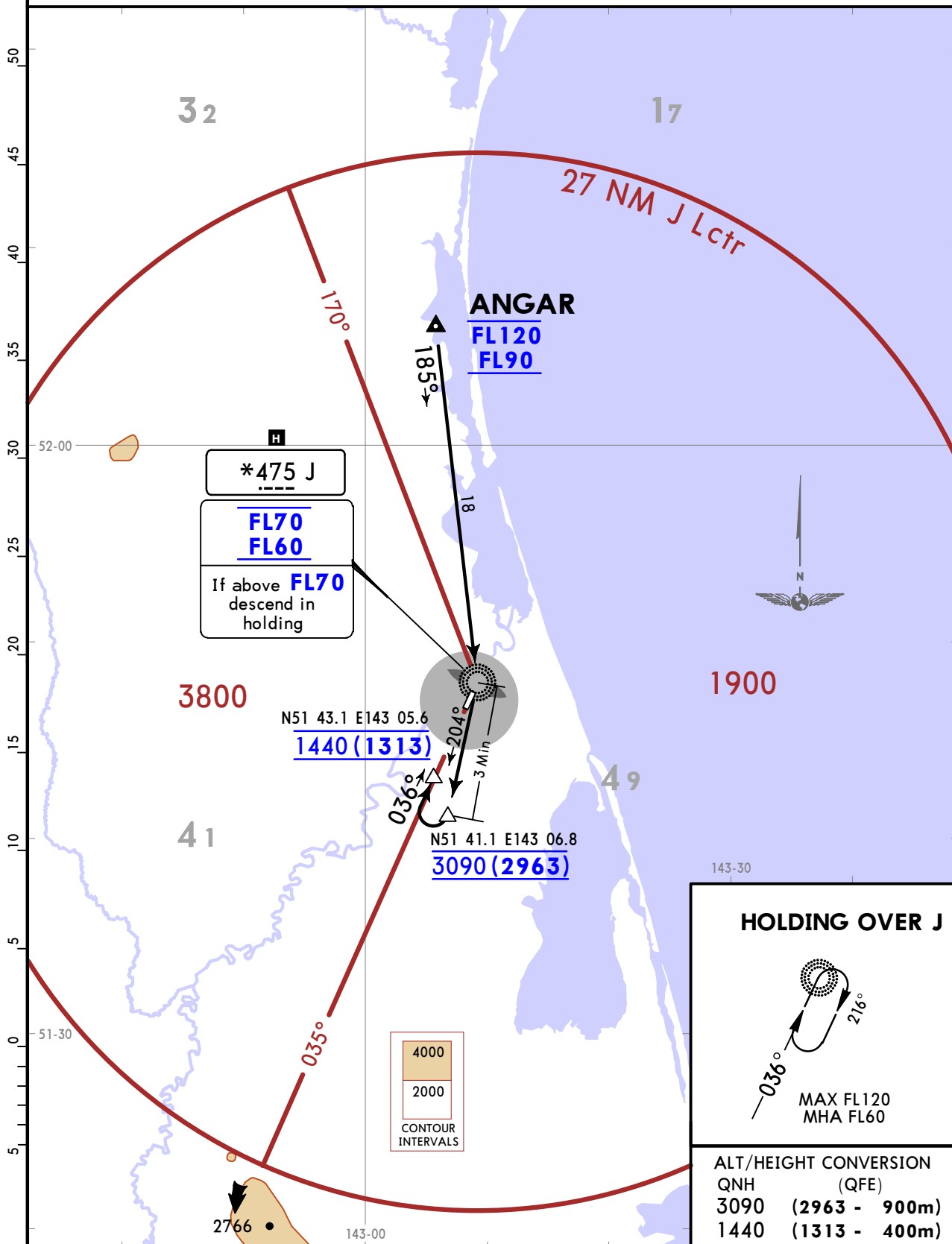
STAR

Alt Set: MM (hPa on request) QNH on request (QFE)
Trans level: FL60
FL70 if pressure is less than 731mm (974.6 hPa)
Apt Elev 128
1. After passing J execute teardrop procedure turn.
2. During procedure turn descent with a minimum descent gradient of 6.7% to minimum descending altitude. If unable to comply, descent shall be carried out in holding over J.

ANGAR 1A
RWY 04 ARRIVAL

CAT A & B

FOR RUSSIAN USERS ONLY



UHSN/NGK
NOGLIKI

JEPPESEN

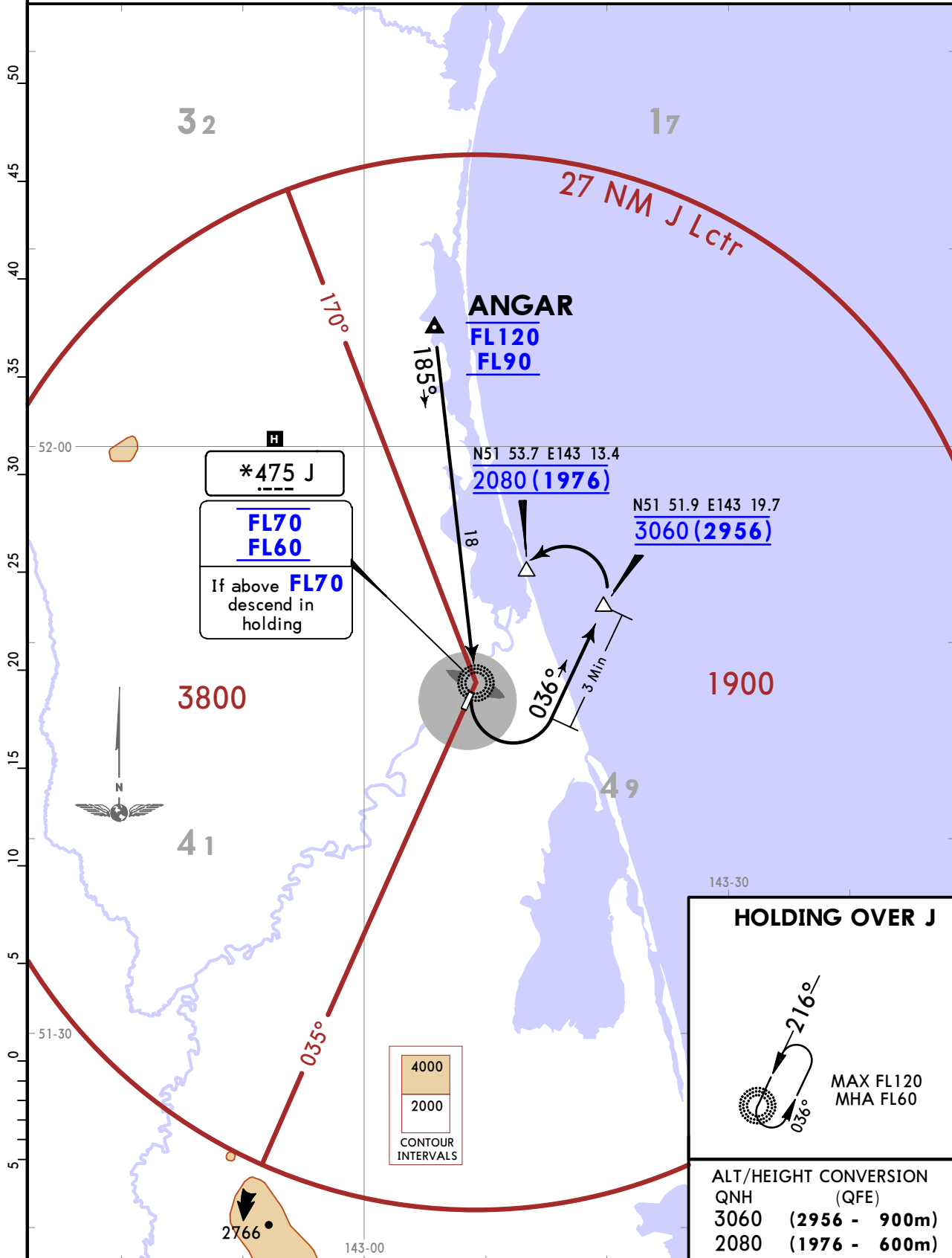
NOGLIKI, RUSSIA

19 APR 19 **10-2F** Eff 25 Apr

STAR

Apt Elev **128**
 Alt Set: MM (hPa on request) QNH on request (QFE)
 Trans level: FL60
 FL70 if pressure is less than 731mm (974.6 hPa)
 After passing J enter racetrack.

ANGAR 2A [ANGA2A]
RWY 22 ARRIVAL
CAT C & D
FOR RUSSIAN USERS ONLY



UHSN/NGK
NOGLIKI

JEPPESSEN

NOGLIKI, RUSSIA

19 APR 19 **10-2G** Eff 25 Apr

STAR

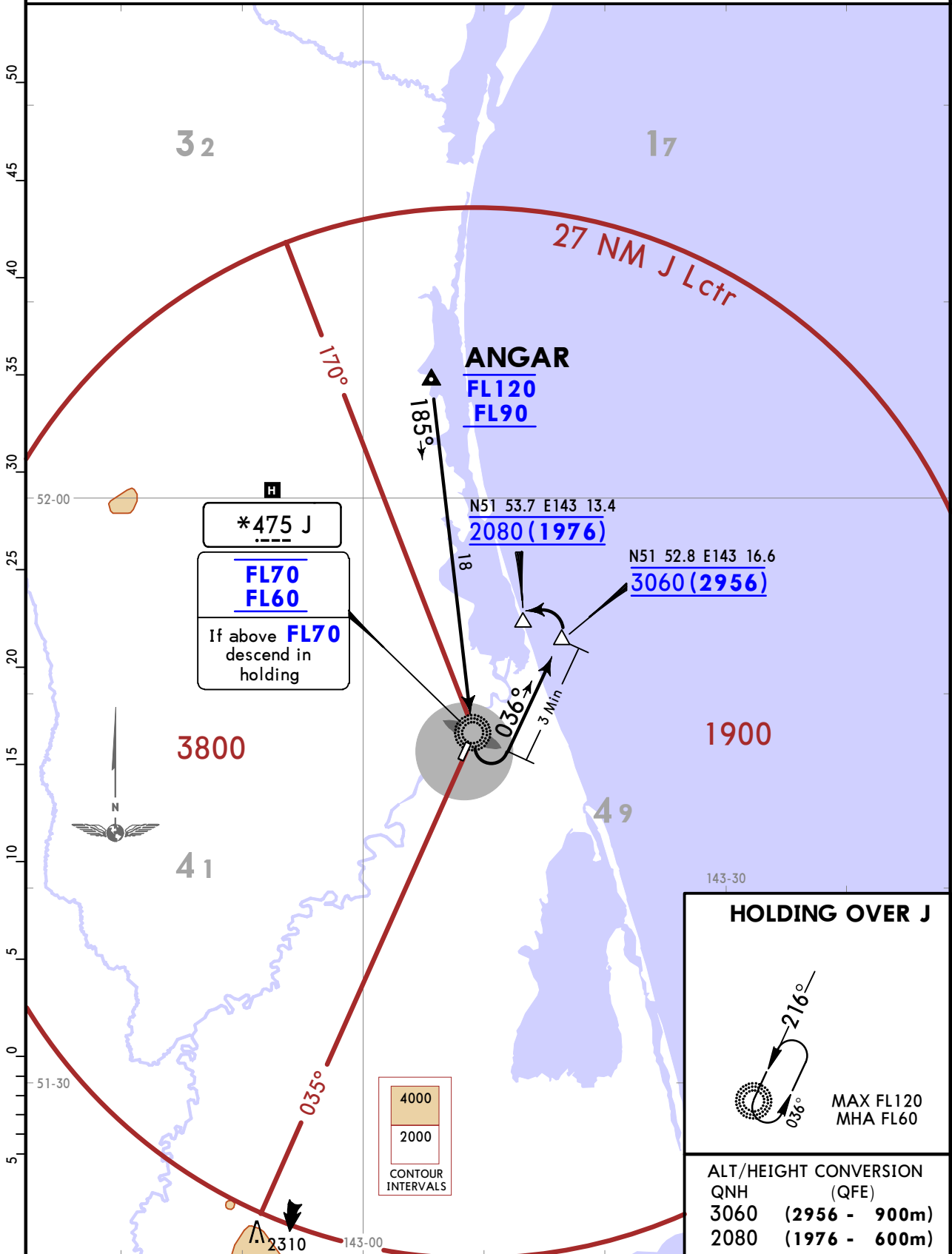
Apt Elev
128

Alt Set: MM (hPa on request) QNH on request (QFE)
Trans level: FL60
FL70 if pressure is less than 731mm (974.6 hPa)
After passing J enter racetrack.

ANGAR 2A
RWY 22 ARRIVAL

CAT A & B

FOR RUSSIAN USERS ONLY



UHSN/NGK
NOGLIKI

JEPESEN
19 APR 19 **10-2H** Eff 25 Apr

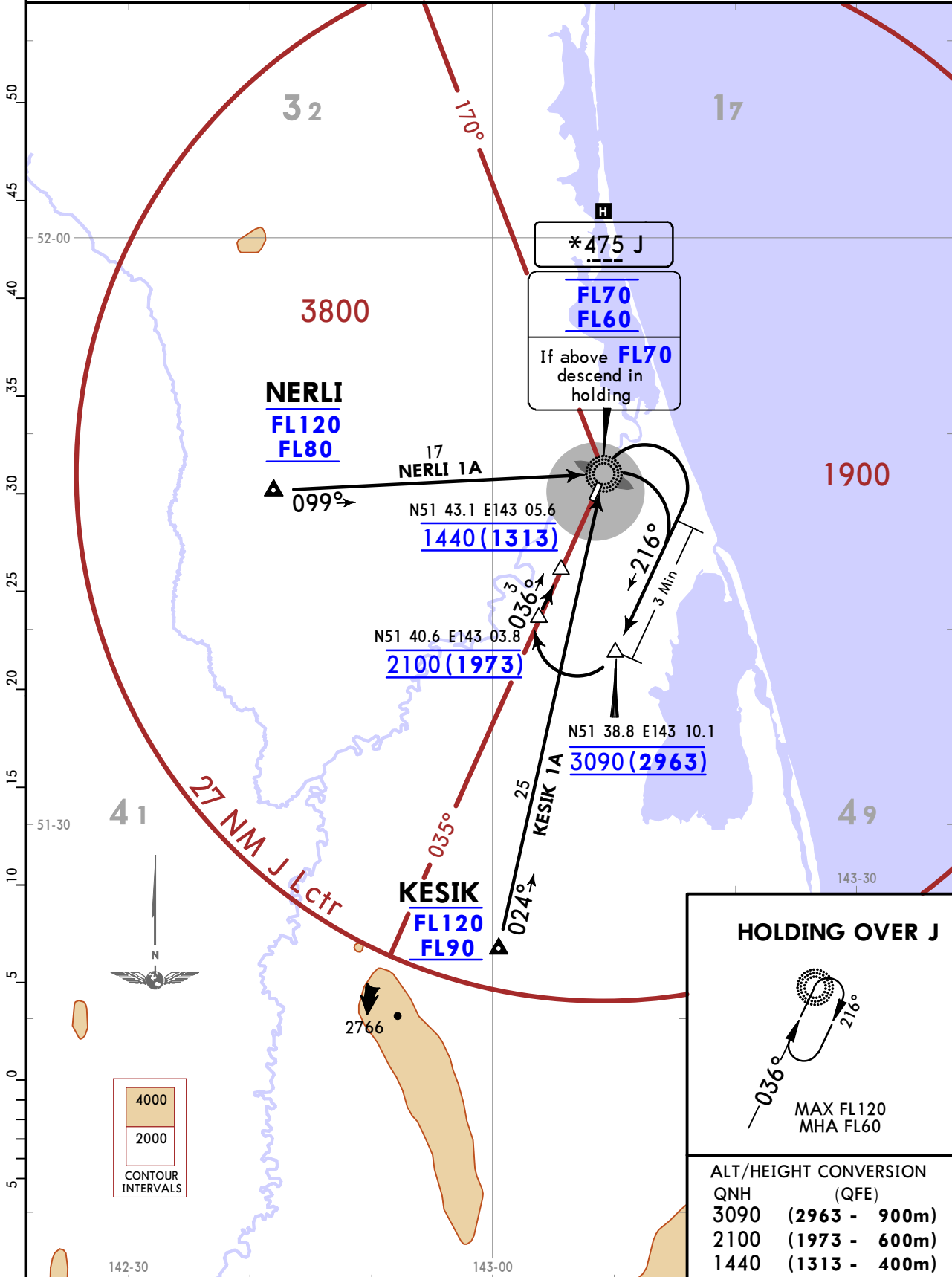
NOGLIKI, RUSSIA
STAR

Apt Elev 128
Alt Set: MM (hPa on request) QNH on request (QFE)
Trans level: FL60
FL70 if pressure is less than 731mm (974.6 hPa)
After passing J enter racetrack.

KESIK 1A [KESI1A], NERLI 1A [NERL1A]
RWY 04 ARRIVALS

CAT C & D

FOR RUSSIAN USERS ONLY



UHSN/NGK
NOGLIKI

JEPPESSEN

NOGLIKI, RUSSIA

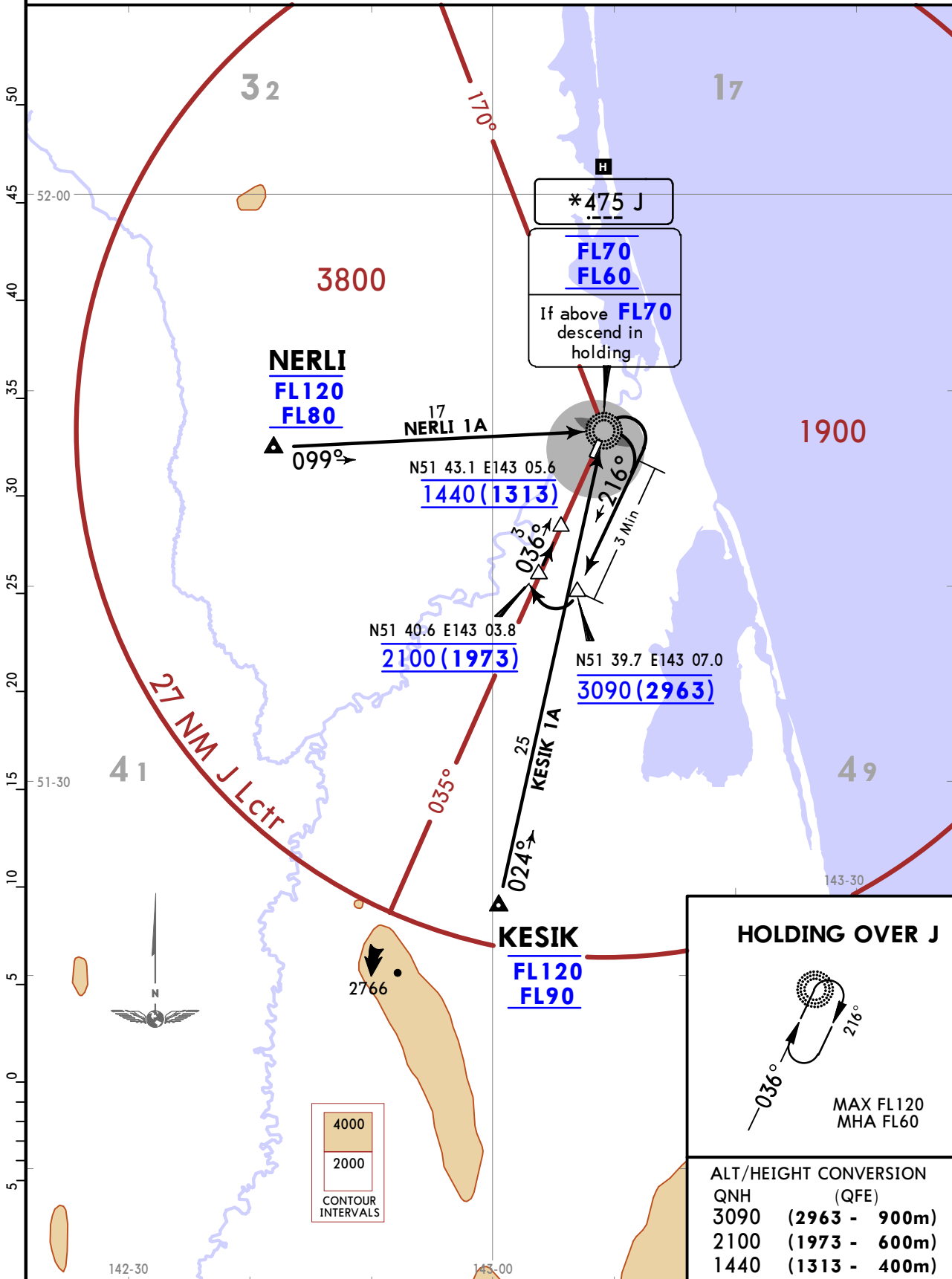
19 APR 19 **10-2J** Eff 25 Apr

STAR

Apt Elev
128

Alt Set: MM (hPa on request) QNH on request (QFE)
Trans level: FL60
FL70 if pressure is less than 731mm (974.6 hPa)
After passing J enter racetrack.

KESIK 1A, NERLI 1A
RWY 04 ARRIVALS
CAT A & B
FOR RUSSIAN USERS ONLY



UHSN/NGK
NOGLIKI

JEPPESSEN
19 APR 19 **10-2K** Eff 25 Apr

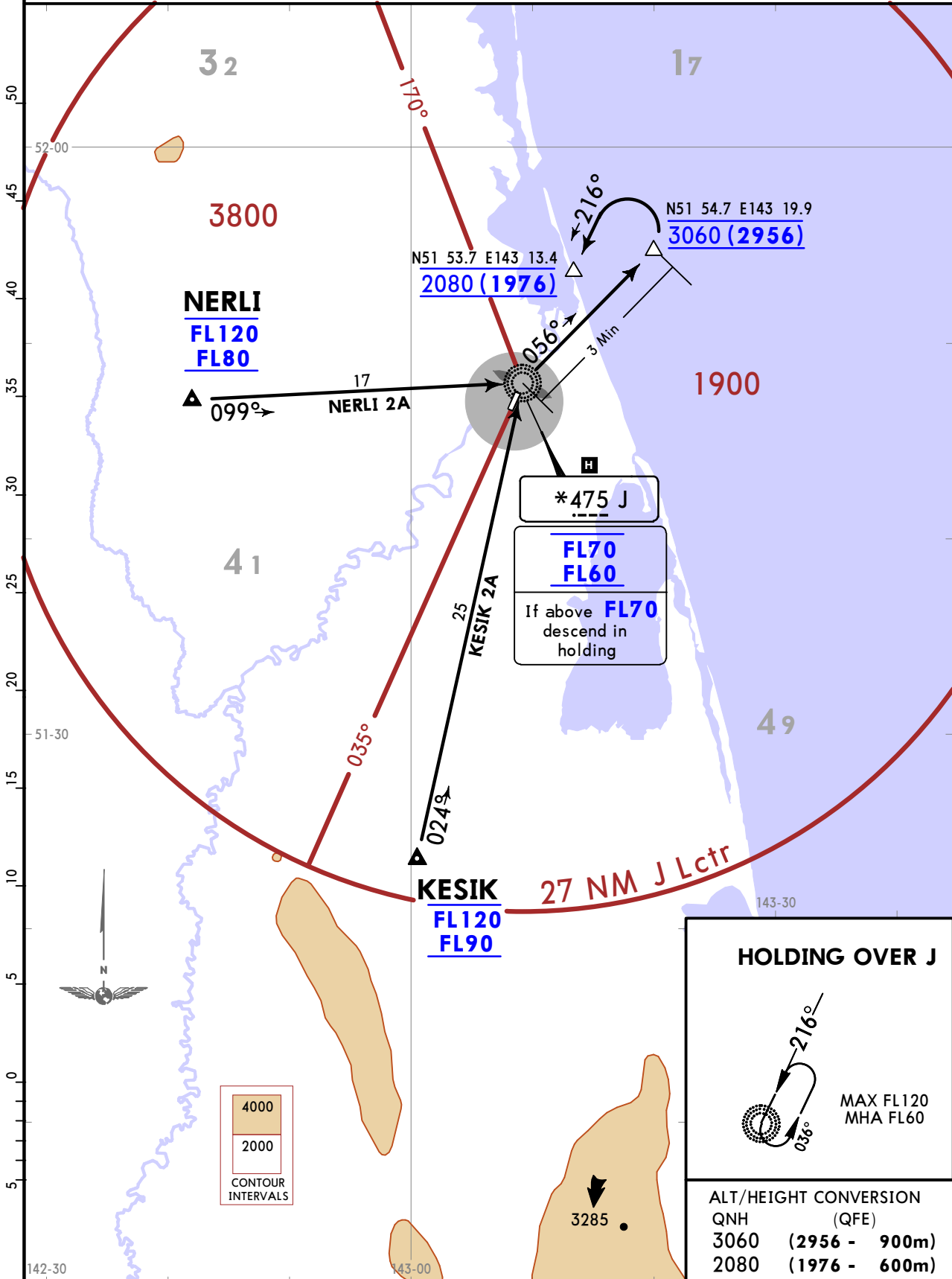
NOGLIKI, RUSSIA
STAR

Apt Elev **128**
Alt Set: MM (hPa on request) QNH on request (QFE)
Trans level: FL60
FL70 if pressure is less than 731mm (974.6 hPa)
1. After passing J execute teardrop procedure turn.
2. During procedure turn descent is allowed.

KESIK 2A [KESI2A], NERLI 2A [NERL2A]
RWY 22 ARRIVALS

CAT C & D

FOR RUSSIAN USERS ONLY



CHANGES: STARs redesignated & revised.

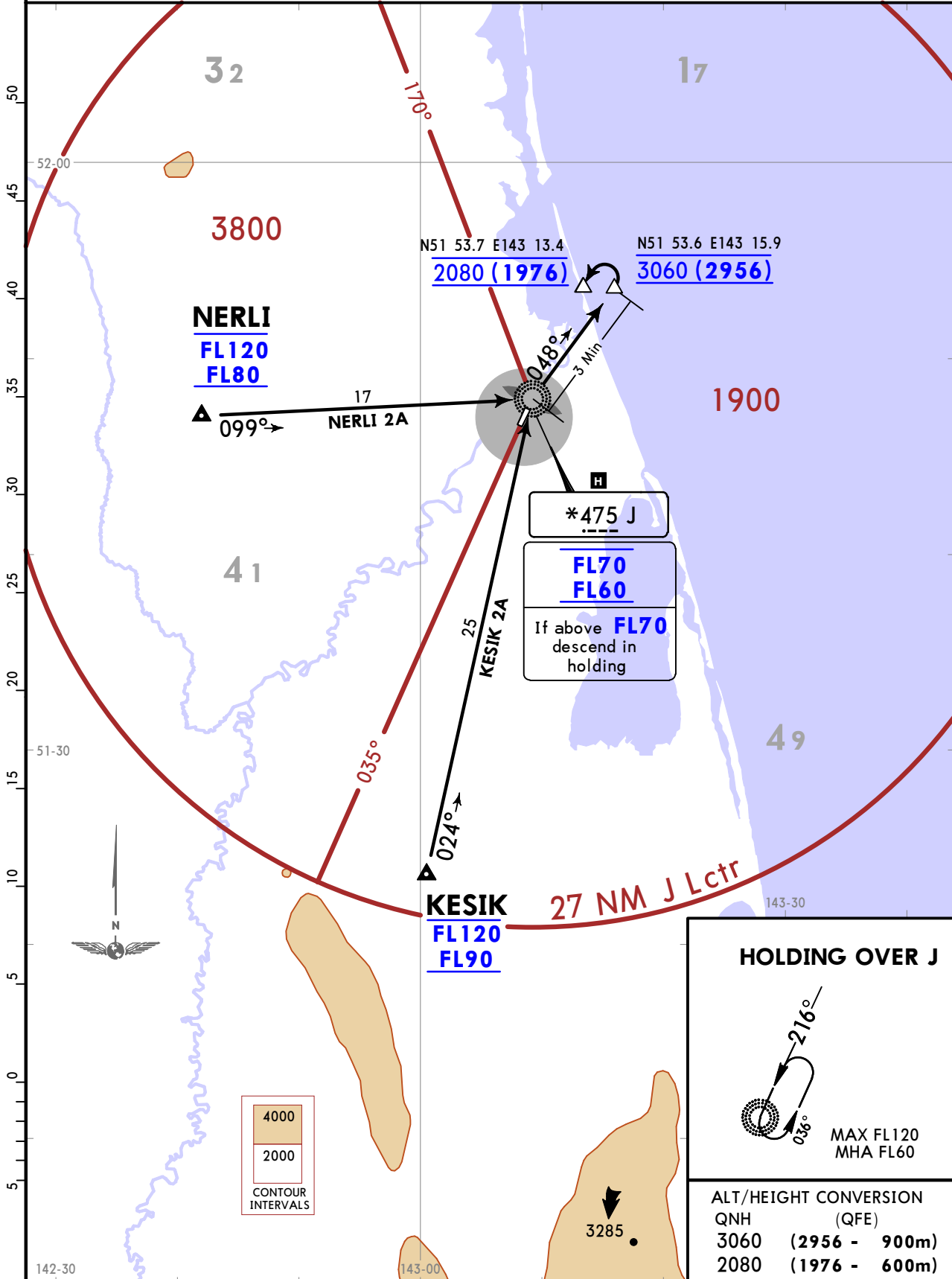
UHSN/NGK
NOGLIKI

JEPPESSEN
19 APR 19 **10-2L** **Eff 25 Apr**

NOGLIKI, RUSSIA
STAR

Apt Elev **128**
Alt Set: MM (hPa on request) QNH on request (QFE)
Trans level: FL60
FL70 if pressure is less than 731mm (974.6 hPa)
1. After passing J execute teardrop procedure turn.
2. During procedure turn descent is allowed.

KESIK 2A, NERLI 2A
RWY 22 ARRIVALS
CAT A & B
FOR RUSSIAN USERS ONLY



UHSN/NGK
NOGLIKI

JEPPESSEN

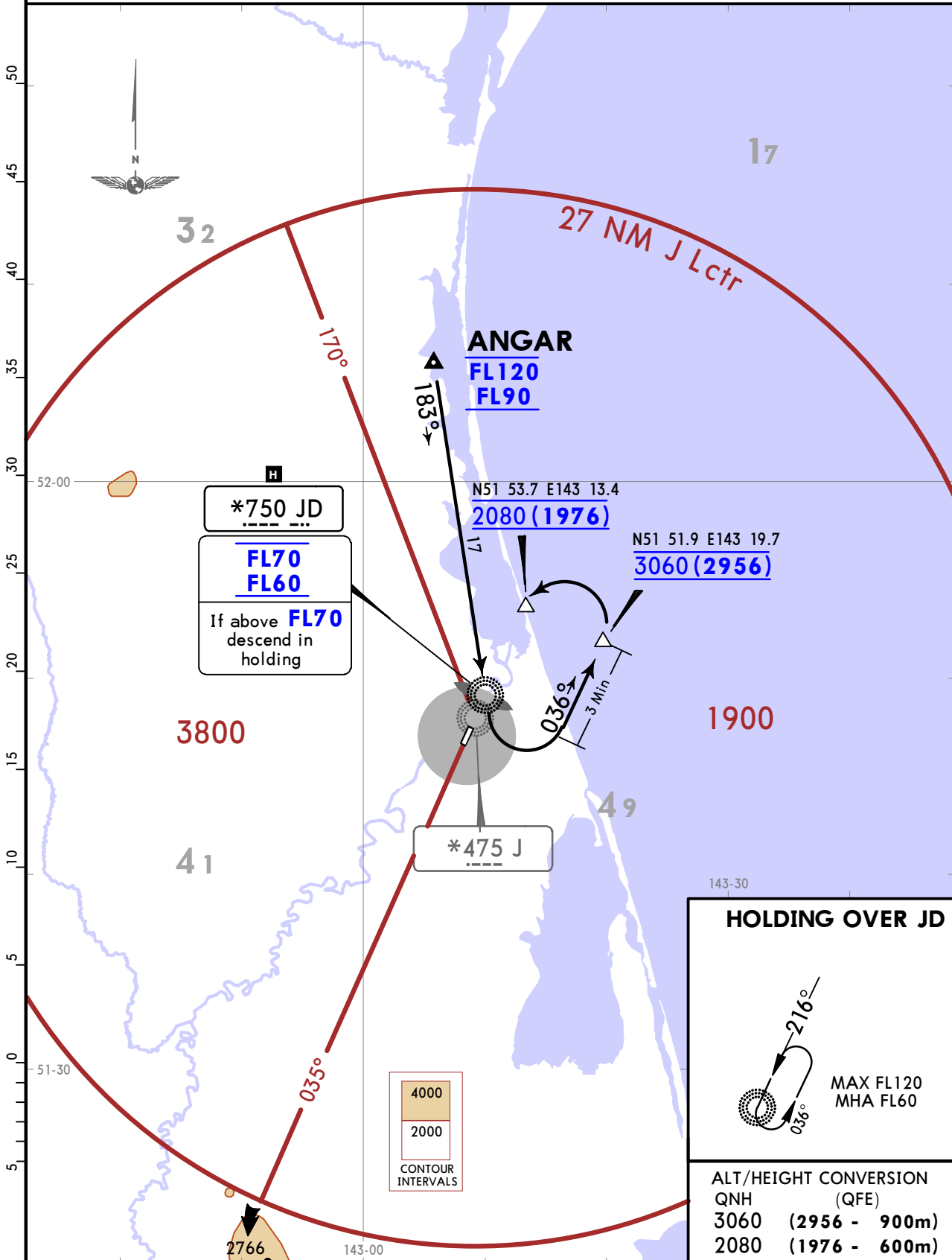
NOGLIKI, RUSSIA

19 APR 19 **(10-2M)** Eff 25 Apr

STAR

Apt Elev 128
 Alt Set: MM (hPa on request) QNH on request (QFE)
 Trans level: FL60
 FL70 if pressure is less than 731mm (974.6 hPa)
 After passing JD enter racetrack.

ANGAR 2W [ANGA2W]
RWY 22 ARRIVAL
CAT C & D
FOR RUSSIAN USERS ONLY



UHSN/NGK
NOGLIKI

JEPPESEN

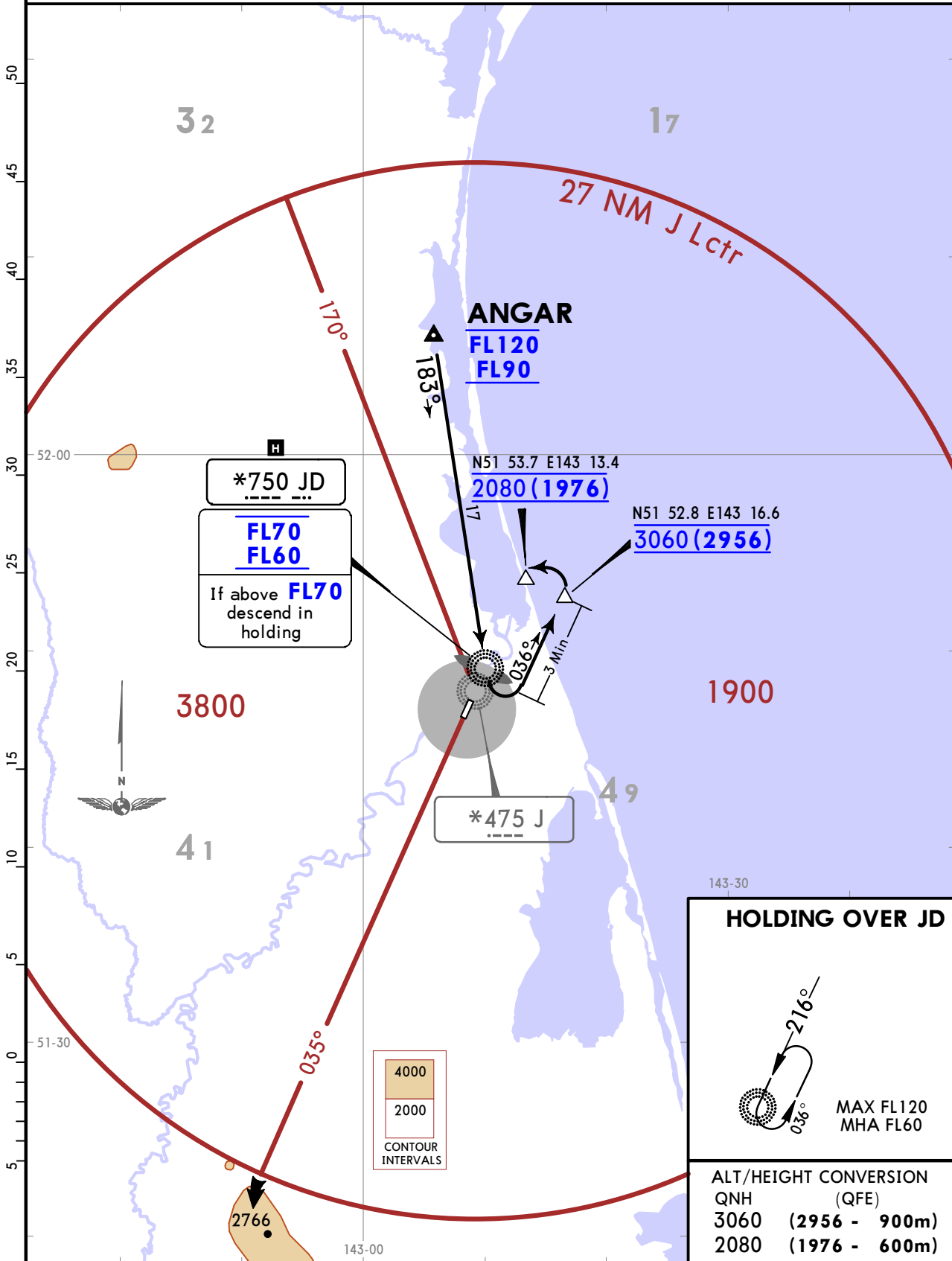
NOGLIKI, RUSSIA

19 APR 19 **10-2N** Eff 25 Apr

STAR

Apt Elev 128	Alt Set: MM (hPa on request) QNH on request (QFE) Trans level: FL60 FL70 if pressure is less than 731mm (974.6 hPa) After passing JD enter racetrack.
------------------------	--

ANGAR 2W
RWY 22 ARRIVAL
CAT A & B
FOR RUSSIAN USERS ONLY



UHSN/NGK
NOGLIKI

JEPPESSEN

NOGLIKI, RUSSIA

19 APR 19 **10-2P** Eff 25 Apr

STAR

Apt Elev
128

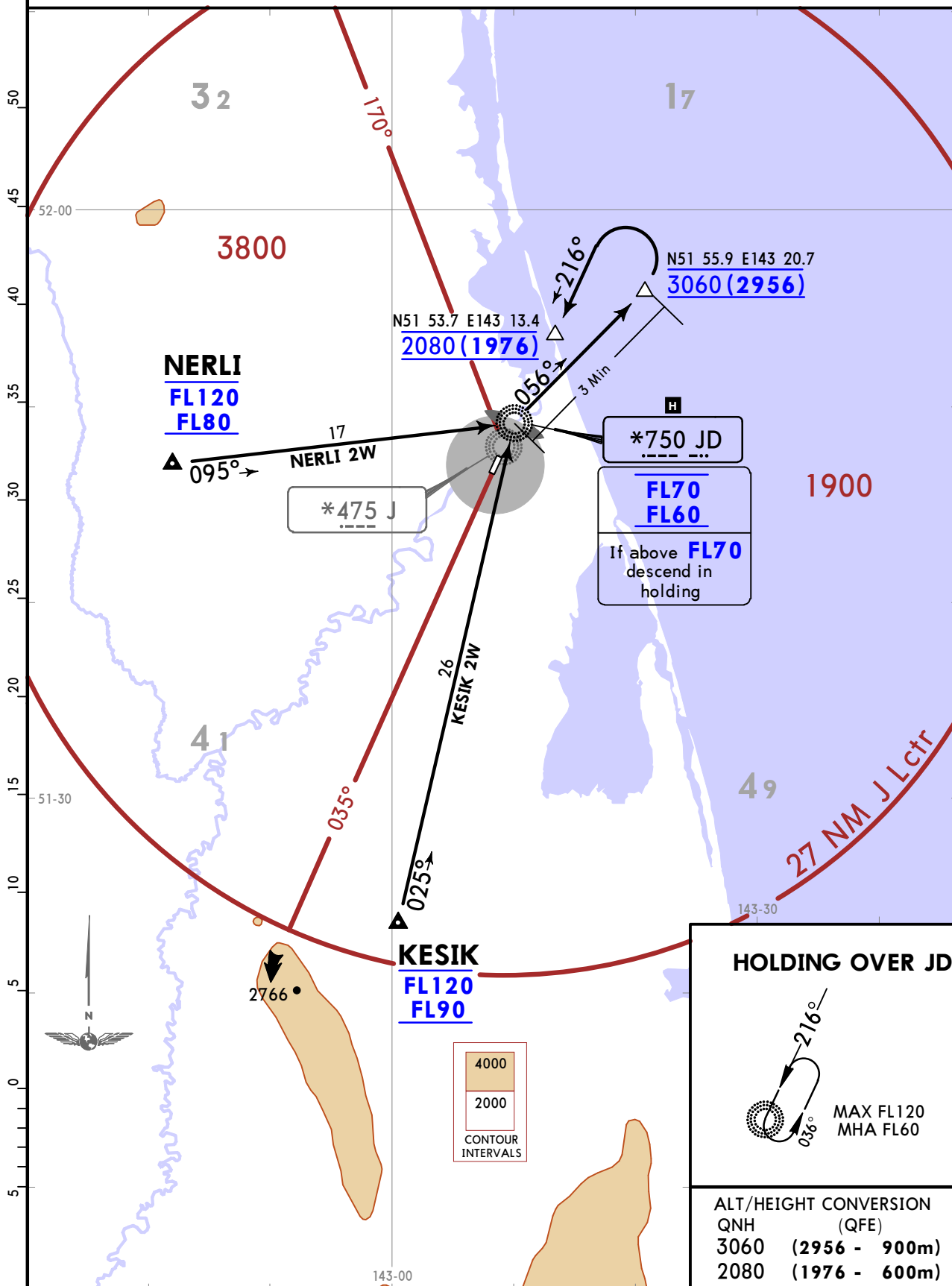
Alt Set: MM (hPa on request) QNH on request (QFE)
Trans level: FL60
FL70 if pressure is less than 731mm (974.6 hPa)
1. After passing JD execute teardrop procedure turn.
2. During procedure turn descent is allowed.

KESIK 2W [KESI2W], NERLI 2W [NERL2W]

RWY 22 ARRIVALS

CAT C & D

FOR RUSSIAN USERS ONLY



UHSN/NGK
NOGLIKI

JEPPESSEN
19 APR 19 **(10-2Q)** **Eff 25 Apr**

NOGLIKI, RUSSIA

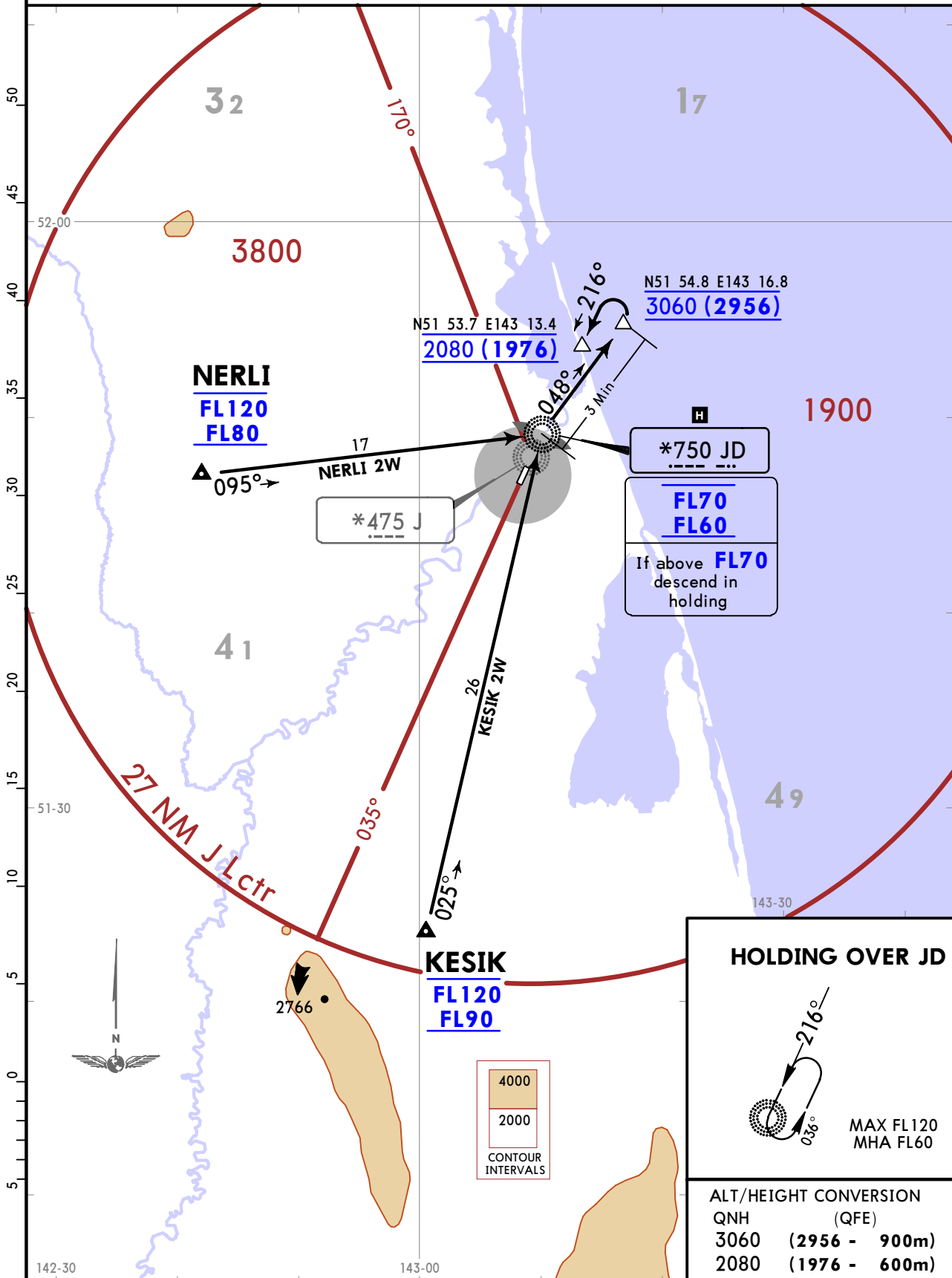
STAR

Apt Elev **128**
Alt Set: MM (hPa on request) QNH on request (QFE)
Trans level: FL60
FL70 if pressure is less than 731mm (974.6 hPa)
1. After passing JD execute teardrop procedure turn.
2. During procedure turn descent is allowed.

KESIK 2W, NERLI 2W
RWY 22 ARRIVALS

CAT A & B

FOR RUSSIAN USERS ONLY



HOLDING OVER JD

MAX FL120
MHA FL60

ALT/HEIGHT CONVERSION

QNH	(QFE)
3060	(2956 - 900m)
2080	(1976 - 600m)

UHSN/NGK
NOGLIKI

JEPPESEN

NOGLIKI, RUSSIA

19 APR 19

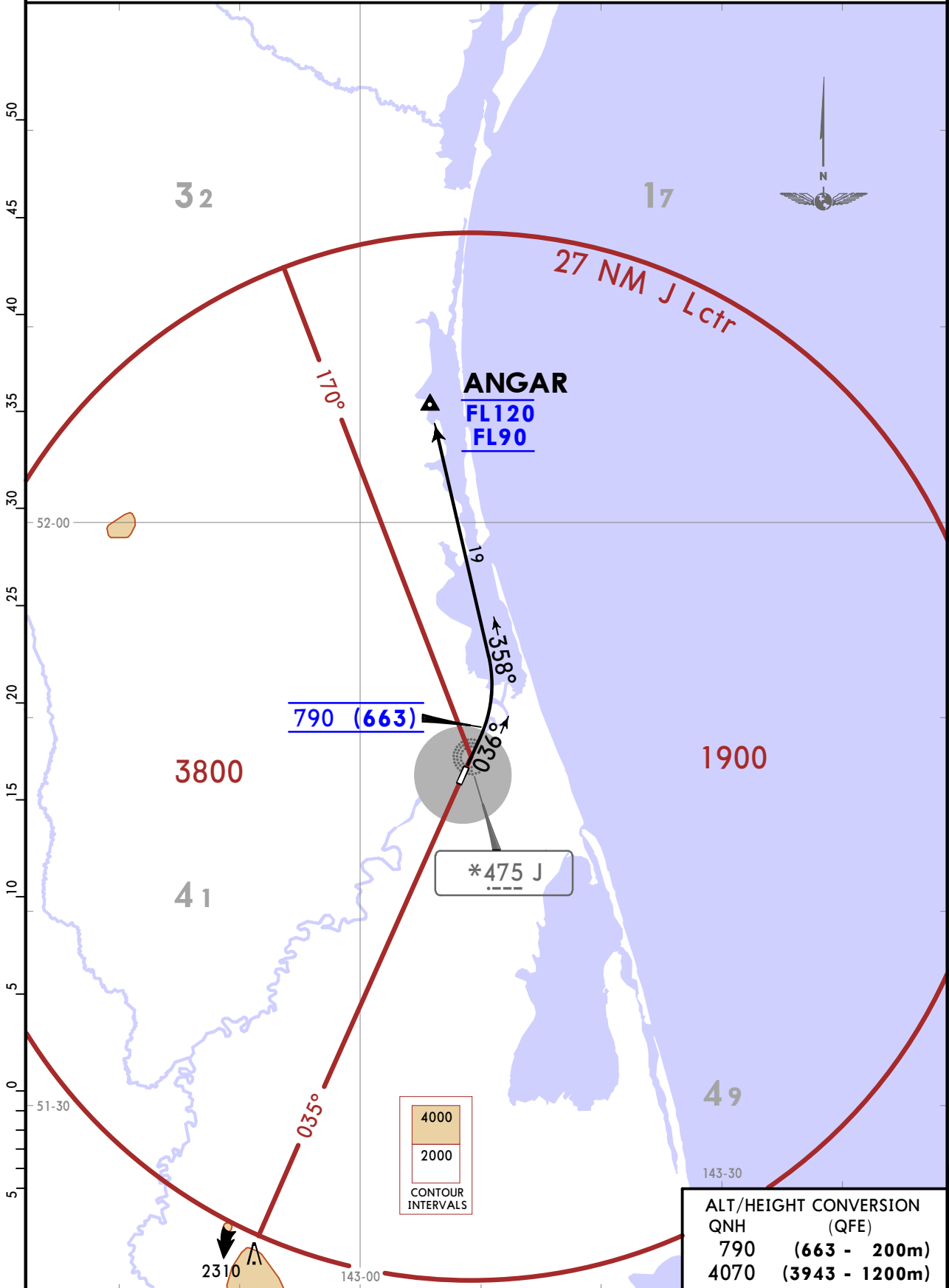
10-3

Eff 25 Apr

SID

Apt Elev
128
QNH on request (QFE)
Trans alt: 4070 (3943)
Altitudes by ATC.

ANGAR 1
RWY 04 DEPARTURE
FOR RUSSIAN USERS ONLY



CHANGES: SID redesignated & revised.

© JEPPESEN, 2018, 2019. ALL RIGHTS RESERVED.

UHSN/NGK
NOGLIKI

JEPPESEN

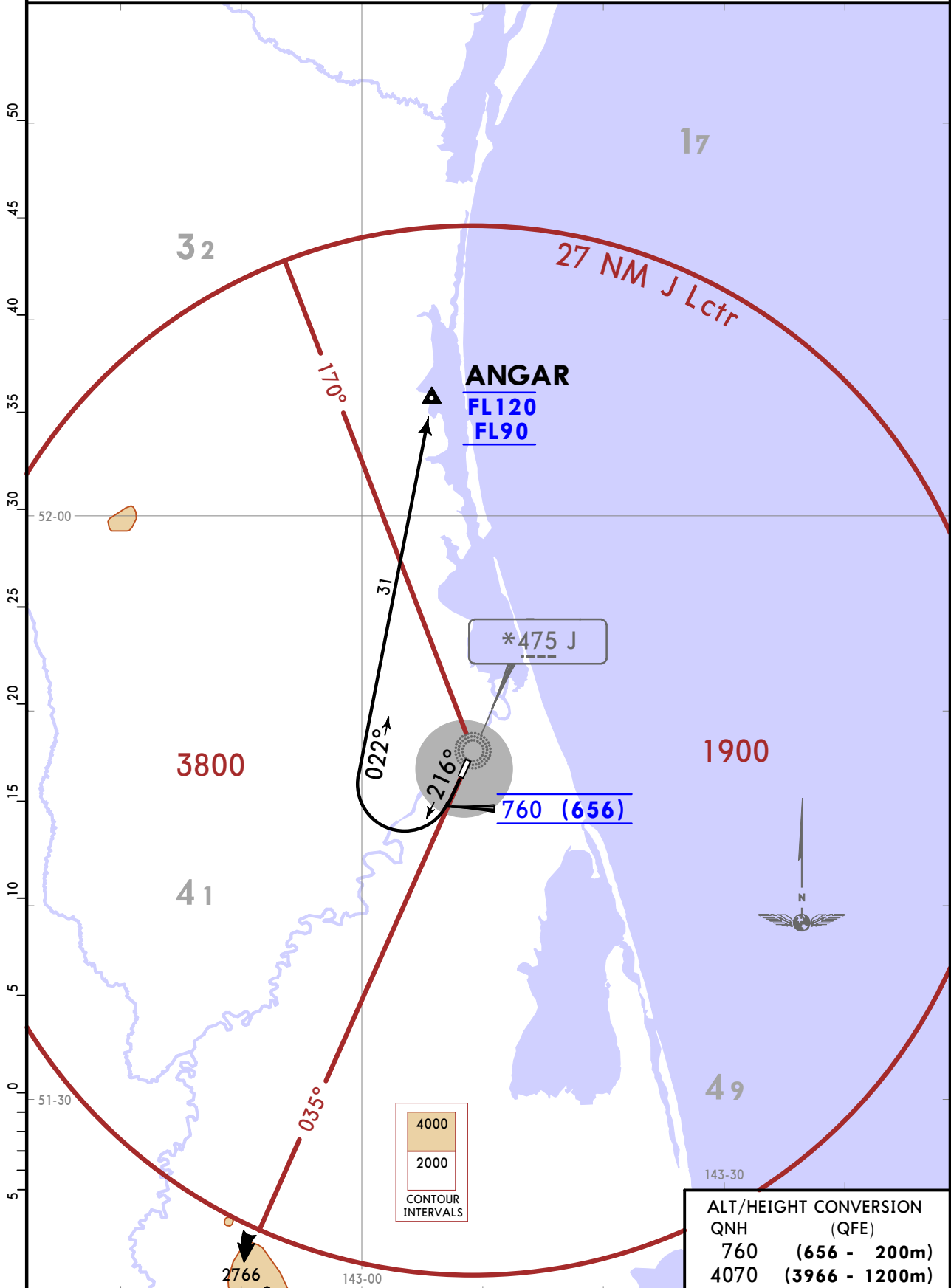
NOGLIKI, RUSSIA

19 APR 19 **10-3A** Eff 25 Apr

SID

Apt Elev
128
QNH on request (QFE)
Trans alt: 4070 (3966)
Altitudes by ATC.

ANGAR 2
RWY 22 DEPARTURE
FOR RUSSIAN USERS ONLY



CHANGES: SID redesignated & revised.

© JEPPESEN, 2018, 2019. ALL RIGHTS RESERVED.

UHSN/NGK
NOGLIKI

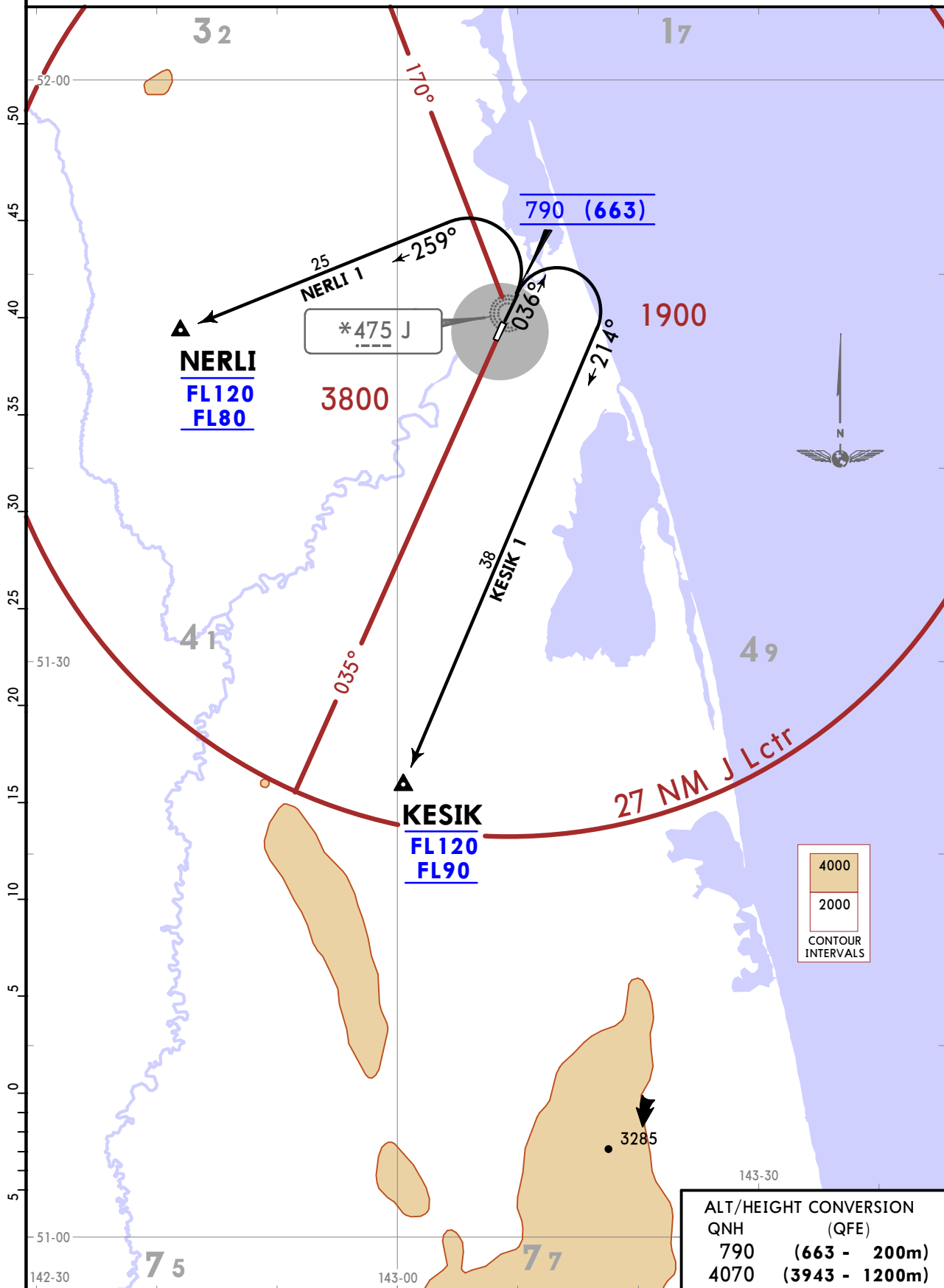
JEPPESSEN
19 APR 19 **10-3B** Eff 25 Apr

NOGLIKI, RUSSIA

SID

Apt Elev
128
QNH on request (QFE)
Trans alt: 4070 (3943)
Altitudes by ATC.

KESIK 1, NERLI 1
RWY 04 DEPARTURES
FOR RUSSIAN USERS ONLY



ALT/HEIGHT CONVERSION	
QNH	(QFE)
790	(663 - 200m)
4070	(3943 - 1200m)

UHSN/NGK
NOGLIKI

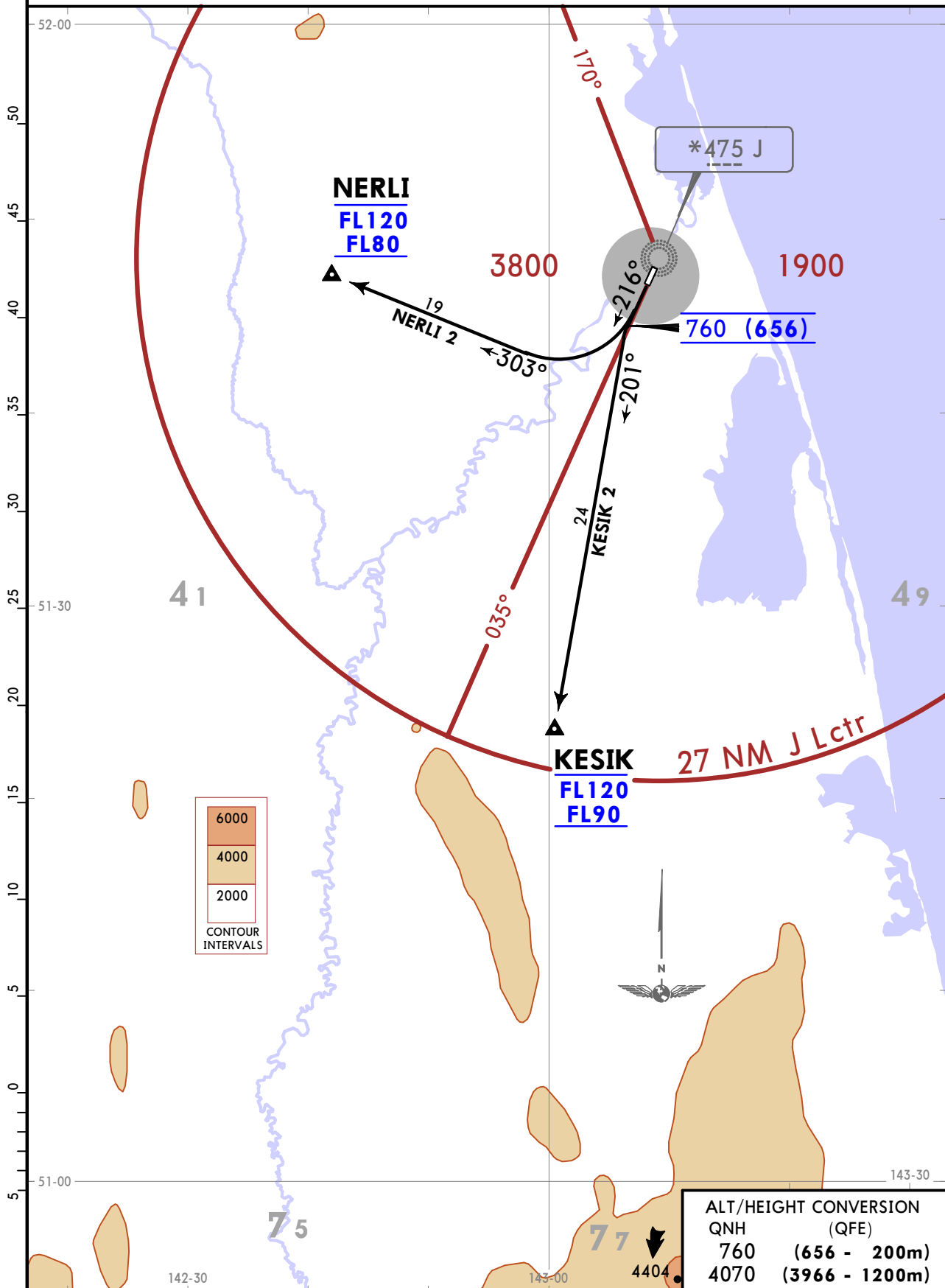
JEPPESEN
19 APR 19 **(10-3C)** Eff 25 Apr

NOGLIKI, RUSSIA

SID

Apt Elev
128
QNH on request (QFE)
Trans alt: 4070 (3966)
Altitudes by ATC.

**KESIK 2, NERLI 2
RWY 22 DEPARTURES
FOR RUSSIAN USERS ONLY**



CHANGES: SIDs redesignated & revised.

© JEPPESEN, 2018, 2019. ALL RIGHTS RESERVED.

UHSN/NGK



Standard
NOGLIKI, RUSSIA
NOGLIKI

STRAIGHT-IN RWY		A	B	C	D
04	GLS FULL ALS out	327'(200') R1000m R1200m	331'(204') R1000m R1200m	341'(214') R1000m R1200m	351'(224') R1000m R1200m
	① RNAV	530'(403') R1500m R1500m	530'(403') R1500m R1500m	530'(403') R1700m R1900m	530'(403') R1700m R1900m
	① NDB ALS out	650'(522') R1500m R1500m	650'(522') R1500m R1500m	650'(522') R2200m R2400m	650'(522') R2200m R2400m
	NDB ALS out	650'(522') R2400m R2600m	650'(522') R2400m R2600m	650'(522') R2600m R2800m	650'(522') R2600m R2800m
	ILS FULL ALS out	303'(200') ② R550m R1200m	303'(200') ② R550m R1200m	303'(200') ② R550m R1200m	303'(200') ② R550m R1200m
22	GLS FULL ALS out	304'(200') ② R550m R1200m	304'(200') ② R550m R1200m	304'(200') ② R550m R1200m	304'(200') ② R550m R1200m
	LOC	NOT AUTHORIZED	NOT AUTHORIZED	NOT AUTHORIZED	NOT AUTHORIZED
	① RNAV ALS out	470'(366') R1000m R1500m	470'(366') R1000m R1500m	470'(366') R1000m R1700m	470'(366') R1000m R1700m
	① 2 NDB ALS out	710'(607') R1500m R1500m	710'(607') R1500m R1500m	710'(607') R2100m R2400m	710'(607') R2100m R2400m
	2 NDB ALS out	710'(607') R2300m R3000m	710'(607') R2300m R3000m	710'(607') R2500m R3200m	710'(607') R2500m R3200m
	① JD NDB ALS out	480'(377') R1000m R1700m	480'(377') R1000m R1700m	480'(377') R1200m R1700m	480'(377') R1200m R1700m
	J NDB ALS out	530'(427') R1500m R2200m	530'(427') R1500m R2200m	530'(427') R1700m R2400m	530'(427') R1700m R2400m

① Continuous Descent Final Approach.

② W/o HUD/AP/FD: R750m.

CIRCLE-TO-LAND	100 KT	135 KT	180 KT	205 KT
PROHIBITED West of rwy between 240° and 025°	530'(402') V1500m ③	630'(502') V1600m ③	730'(602') V2400m ③	830'(702') V3600m

③ or higher minimums of preceding straight-in approach.

TAKE-OFF

	Low Visibility Take-off		Adequate vis ref (Day only)
	Day: RL & RCLM Night: RL	Day: RL or RCLM Night: RL	
A			
B			
C	R300m	400m	500m
D			

UHSN/NGK
NOGLIKI

JEPPESEN

NOGLIKI, RUSSIA

19 JAN 18

11-1

Eff 1 Feb

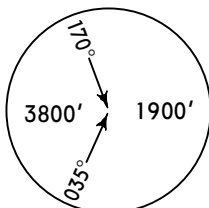
ILS or 2 NDB Rwy 22

*NOGLIKI Vyshka (TWR)

132.0 Russian only

BRIEFING STRIP™

LOC ING *108.1	Final Apch Crs 216°	GS LOM 694'(591')	ILS DA(H) 303'(200')	Apt Elev 128' Rwy 103'
NDB JD *750		No FAF	NDB MDA(H) 710'(607')	



MISSED APCH: Climb to 760'(657'), then turn LEFT onto 036° climbing to 2080'(1977'), then according to chart.

MSA J Lctr within 27 NM

Alt Set: MM (hPa on req) QNH on req (QFE) Trans level: FL 60 **1** Trans alt: 4070' (3967')

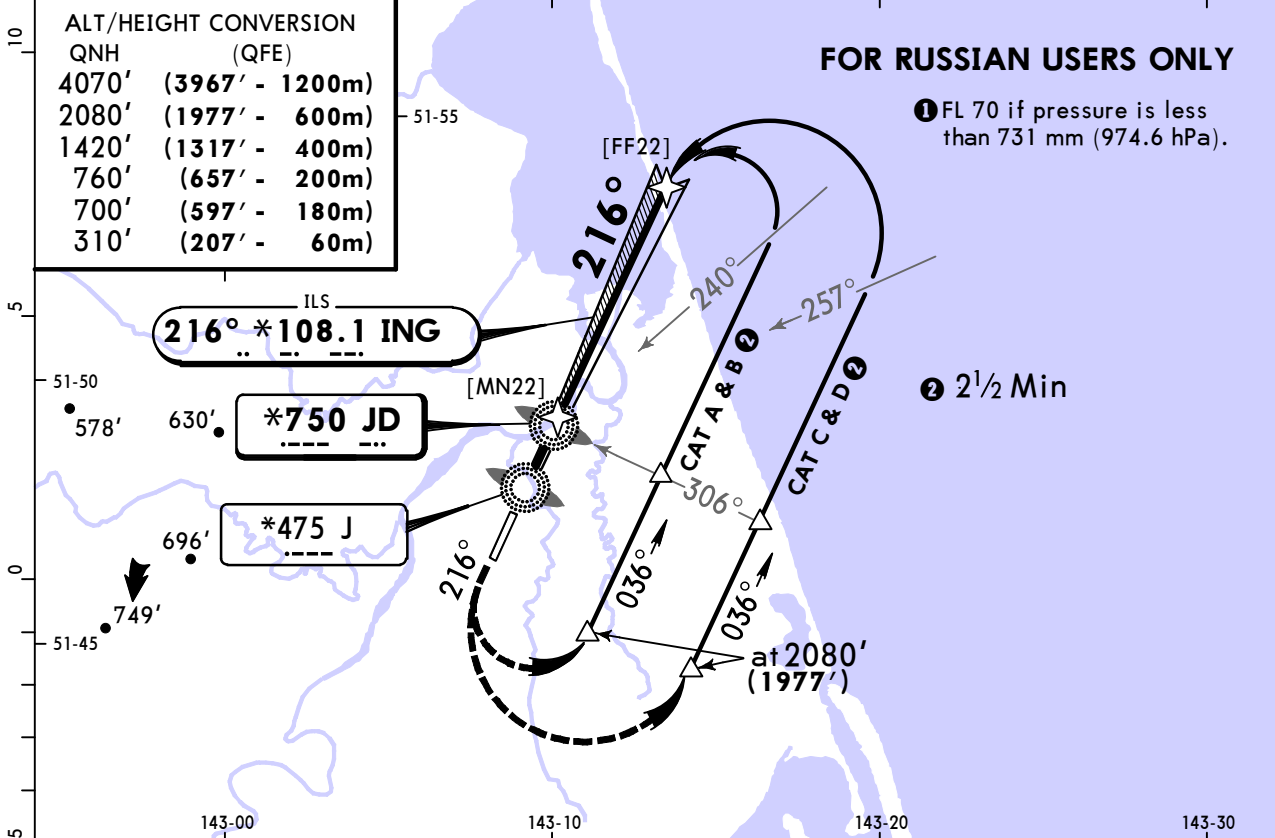
ALT/HEIGHT CONVERSION
QNH (QFE)

4070'	(3967' - 1200m)
2080'	(1977' - 600m)
1420'	(1317' - 400m)
760'	(657' - 200m)
700'	(597' - 180m)
310'	(207' - 60m)

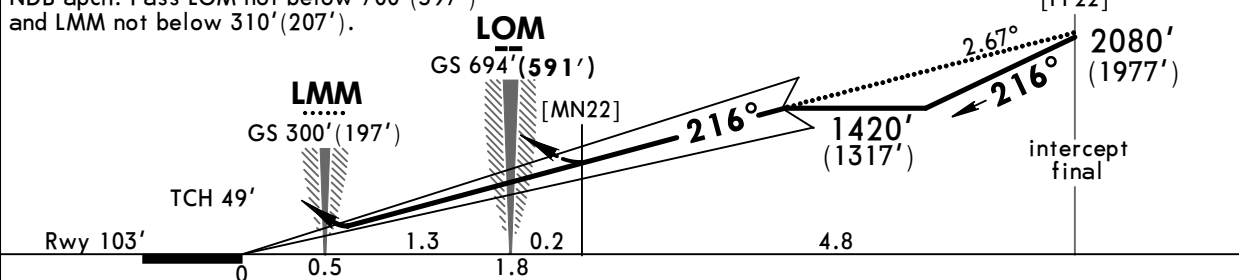
FOR RUSSIAN USERS ONLY

1 FL 70 if pressure is less than 731 mm (974.6 hPa).

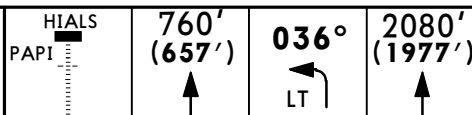
2 2½ Min



NDB apch: Pass LOM not below 700'(597') and LMM not below 310'(207').



Gnd speed-Kts	70	90	100	120	140	160	
ILS GS or NDB Desc Angle	2.67°	331	425	472	567	661	756



STRAIGHT-IN LANDING RWY 22 1

CIRCLE-TO-LAND

	ILS		NDB		Max Kts	MDA(H)	
	DA(H)	ALS out	MDA(H)	ALS out			
A	303'(200')		710'(607')		100	530' (402')	2 1600m
B					135	620' (492')	2 1600m
C	800m	1200m		3200m	180	720' (592')	2 2400m
D					205	820' (692')	3600m

1 LOC (GS out): NOT AUTHORIZED. **2** or higher straight-in minimums.

**UHSN/NGK
NOGLIKI**



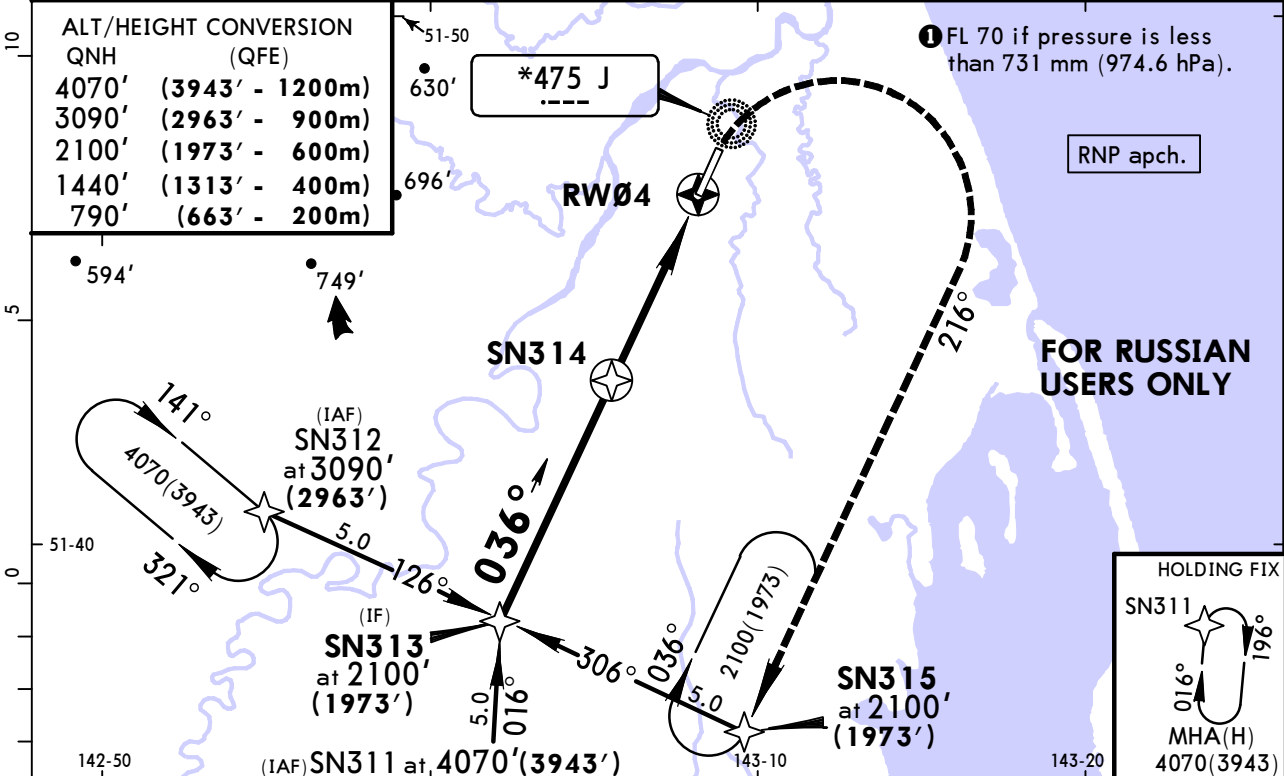
NOGLIKI, RUSSIA

19 APR 19 (12-1) Eff 25 Apr

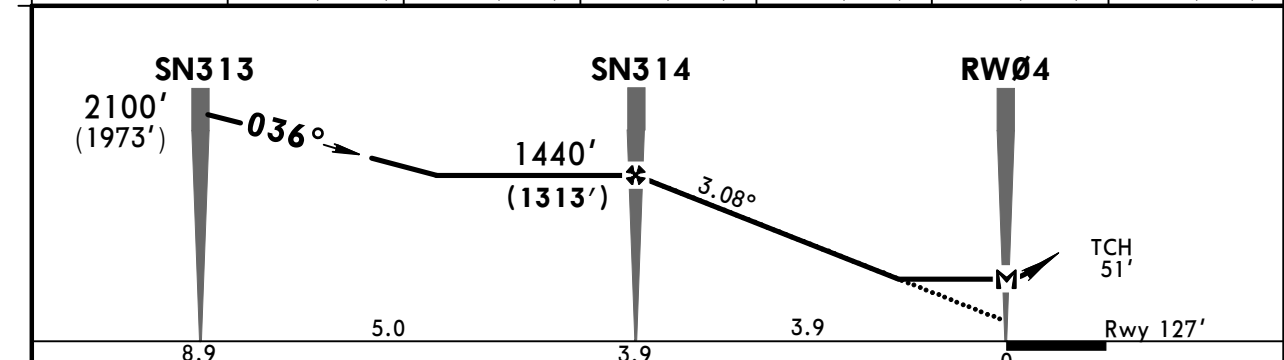
RNAV (GNSS) Rwy 04

*NOGLIKI Vyshka (TWR)					
132.0 Russian only					
RNAV	Final Apch Crs 036°	Minimum Alt SN314 1440'(1313')	MDA(H) 530'(403')	Apt Elev 128' Rwy 127'	
MISSED APCH: Climb to 790'(663'), then turn RIGHT onto 216° to SN315 climbing to 2100'(1973'), then according to chart.					MSA J Lctr within 27 NM

Alt Set: MM (hPa on req) QNH on req (QFE) Trans level: FL 60 ① Trans alt: 4070' (3943')



DIST to RW04	3.2	2.7	2.2	1.6	1.1	0.5
ALTITUDE(HAT)	1220'(1093')	1060'(933')	890'(763')	700'(573')	540'(413')	340'(213')



Gnd speed-Kts	70	90	100	120	140	160	ALS PAPI	790' (663')	216° RT	SN315
Descent Angle	3.08°	381	490	545	654	763		872	↑	↑
MAP at RW04										

STRAIGHT-IN LANDING RWY 04		CIRCLE-TO-LAND	
MDA(H) 530'(403')		PROHIBITED West of rwy between 240° and 025°.	
ALS out		Max Kts	MDA(H)
A	1600m	100	530' (402') 1600m
B	1600m	135	620' (492') 1600m
C	2000m	180	720' (592') 2400m
D	2000m	205	820' (692') 3600m

**UHSN/NGK
NOGLIKI**

JEPPESSEN

NOGLIKI, RUSSIA

19 APR 19 **(12-2) Eff 25 Apr**

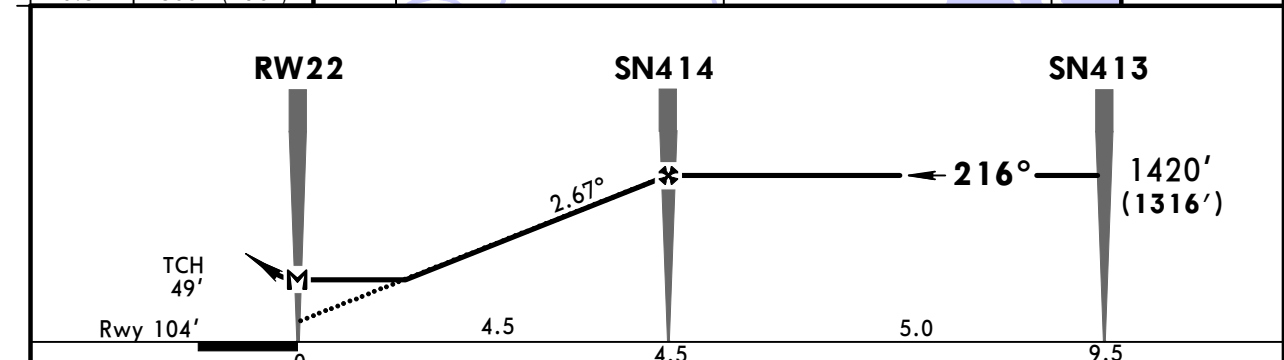
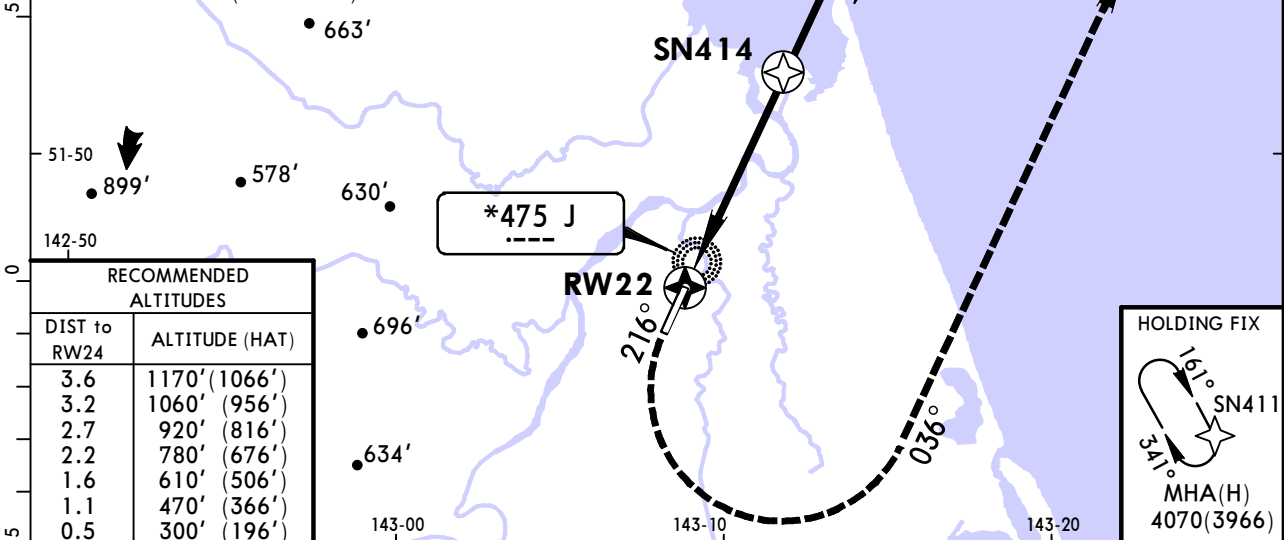
RNAV (GNSS) Rwy 22

*NOGLIKI Vyshka (TWR)					<p>MSA J Lctr within 27 NM</p>
132.0 Russian only					
RNAV	Final Apch Crs 216°	Minimum Alt SN414 1420'(1316')	MDA(H) 470'(366')	Apt Elev 128' Rwy 104'	
<p>MISSED APCH: Climb to 760'(656'), then turn LEFT onto 036° to SN415 climbing to 2080'(1976'), then according to chart.</p>					

Alt Set: MM (hPa on req) QNH on req (QFE) Trans level: FL 60 **1** Trans alt: 4070' (3966')

ALT/HEIGHT CONVERSION	
QNH	(QFE)
4070'	(3966' - 1200m)
3060'	(2956' - 900m)
2080'	(1976' - 600m)
1420'	(1316' - 400m)
760'	(656' - 200m)

1 FL 70 if pressure is less than 731 mm (974.6 hPa).



STRAIGHT-IN LANDING RWY 22				CIRCLE-TO-LAND	
MDA(H) 470'(366')				PROHIBITED West of rwy between 240° and 025°.	
		ALS out		Max Kts	

PANS OPS	A			100	530' (402')	1600m
	B	800m		135	620' (492')	1600m
	C			180	720' (592')	2400m
	D	1600m		205	820' (692')	3600m

CHANGES: Rwy elevation. Procedure.

UHSN/NGK
NOGLIKI

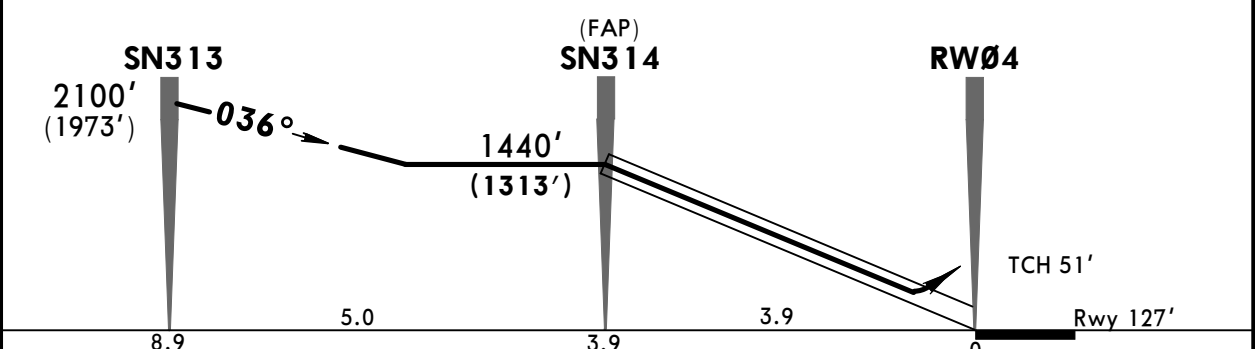
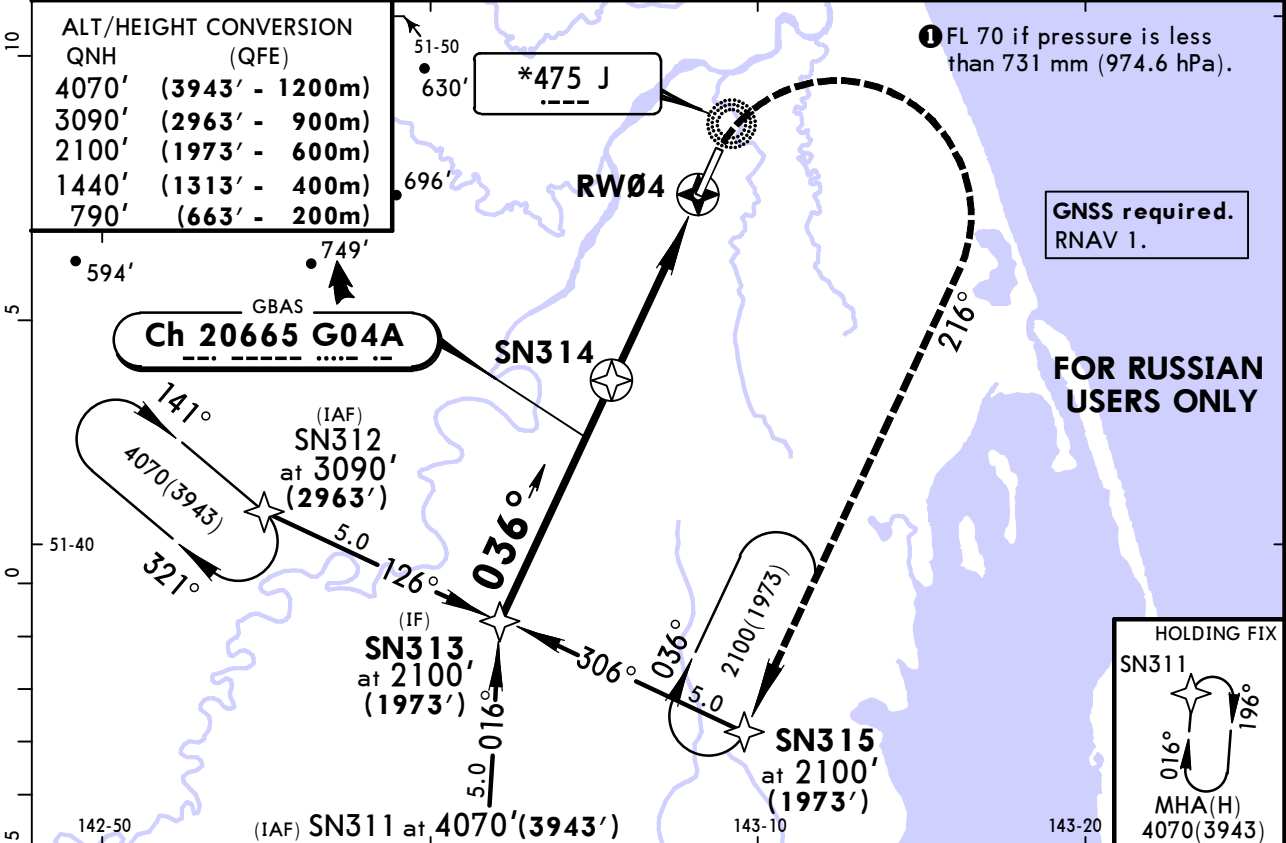
JEPPESEN
19 APR 19 **12-40** Eff 25 Apr

NOGLIKI, RUSSIA
GLS Rwy 04

*NOGLIKI Vyshka (TWR)					<p>MSA J Lctr within 27 NM</p>
132.0 Russian only					
GBAS Ch 20665 G04A	Final Apch Crs 036°	Minimum Alt SN314 1440'(1313')	GLS DA(H) Refer to Minimums	Apt Elev 128' Rwy 127'	

MISSED APCH: Climb to 790'(663'), then turn RIGHT onto 216° to SN315 climbing to 2100'(1973'), then according to chart.

Alt Set: MM (hPa on req) QNH on req (QFE) Trans level: FL 60 ① Trans alt: 4070' (3943')



Gnd speed-Kts	70	90	100	120	140	160	ALS PAPI	790' (663')	216° RT	SN315
Glide Path Angle	3.08°	381	490	545	654	763		872	↑	↑
MAP at DH										

STRAIGHT-IN LANDING RWY 04				CIRCLE-TO-LAND			
DA(H) A: 327'(200') C: 341'(214')				PROHIBITED West of rwy between 240° and 025°.			
B: 331'(204') D: 351'(224')							
FULL		ALS out		Max Kts	MDA(H)		
A					100	530'(402')	1600m
B					135	620'(492')	1600m
C	1200m				180	720'(592')	2400m
D				205	820'(692')	3600m	

PANS OPS

UHSN/NGK
NOGLIKI

JEPPESEN
19 APR 19 **(12-41)** Eff 25 Apr

NOGLIKI, RUSSIA
GLS Rwy 22

BRIEFING STRIP™

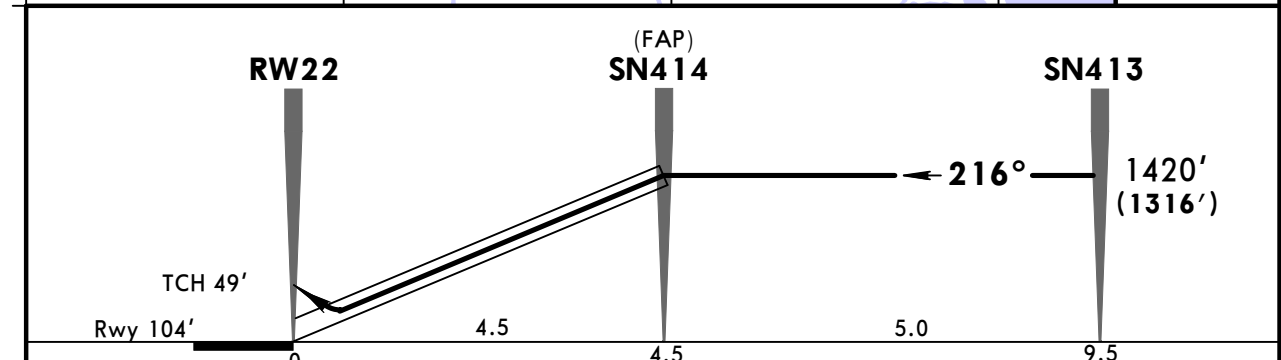
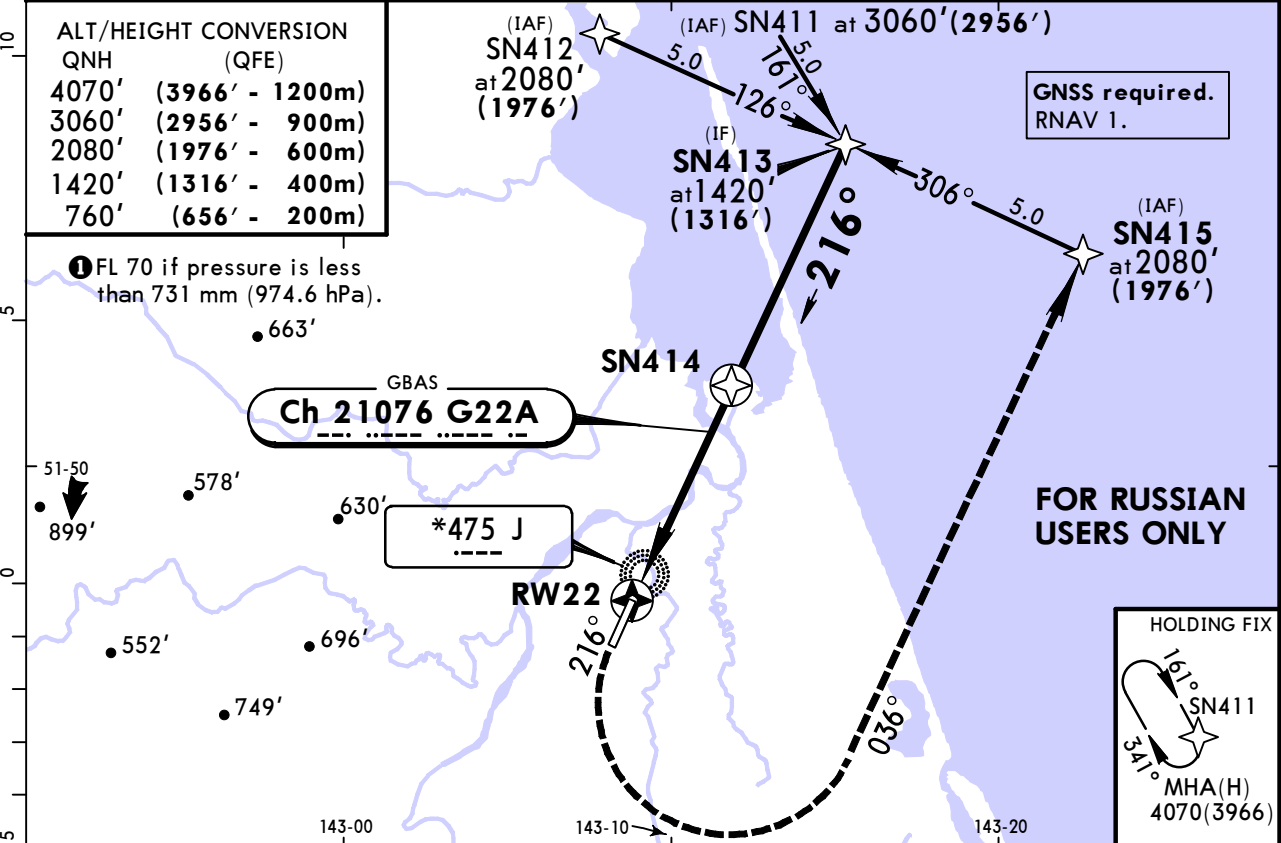
*NOGLIKI Vyshka (TWR)
132.0 Russian only

GBAS Ch 21076 G22A	Final Apch Crs 216°	Minimum Alt SN414 1420'(1316')	GLS DA(H) 304'(200')	Apt Elev 128' Rwy 104'
---------------------------------	----------------------------------	--------------------------------------	----------------------------	---------------------------

MISSED APCH: Climb to 760'(656'), then turn LEFT onto 036° to SN415 climbing to 2080'(1976'), then according to chart.

MSA
J Lctr
within 27 NM

Alt Set: MM (hPa on req) QNH on req (QFE) Trans level: FL 60 ① Trans alt: 4070' (3966')



Gnd speed-Kts	70	90	100	120	140	160	HIALS PAPI	760' (656')	036°	SN415
Glide Path Angle	2.67°	331	425	472	567	756		↑	LT	↑
MAP at DH										

STRAIGHT-IN LANDING RWY 22		CIRCLE-TO-LAND	
DA(H) 304'(200')		PROHIBITED West of rwy between 240° and 025°.	
FULL	ALS out	Max Kts	MDA(H)
A		100	530' (402') 1600m
B		135	620' (492') 1600m
C	800m	180	720' (592') 2400m
D	1200m	205	820' (692') 3600m

UHSN/NGK
NOGLIKI

JEPPESEN
19 JAN 18 **(16-1)** Eff 1 Feb

NOGLIKI, RUSSIA
NDB Rwy 04

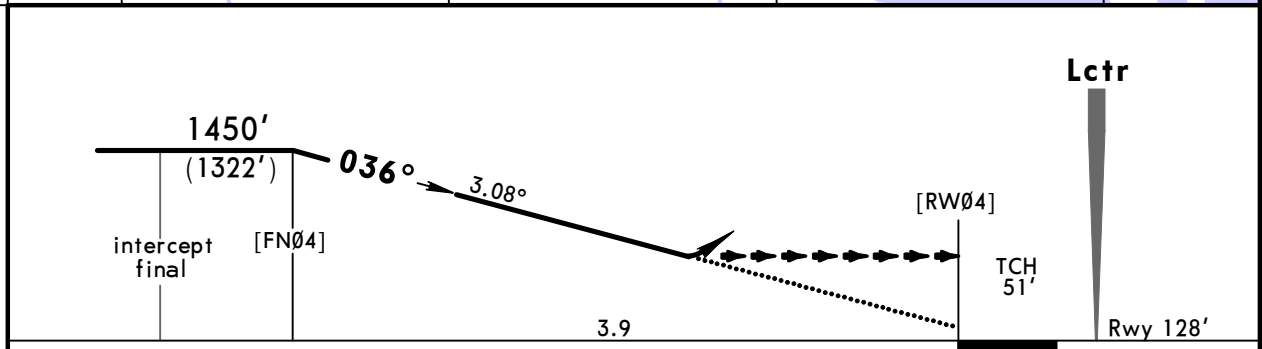
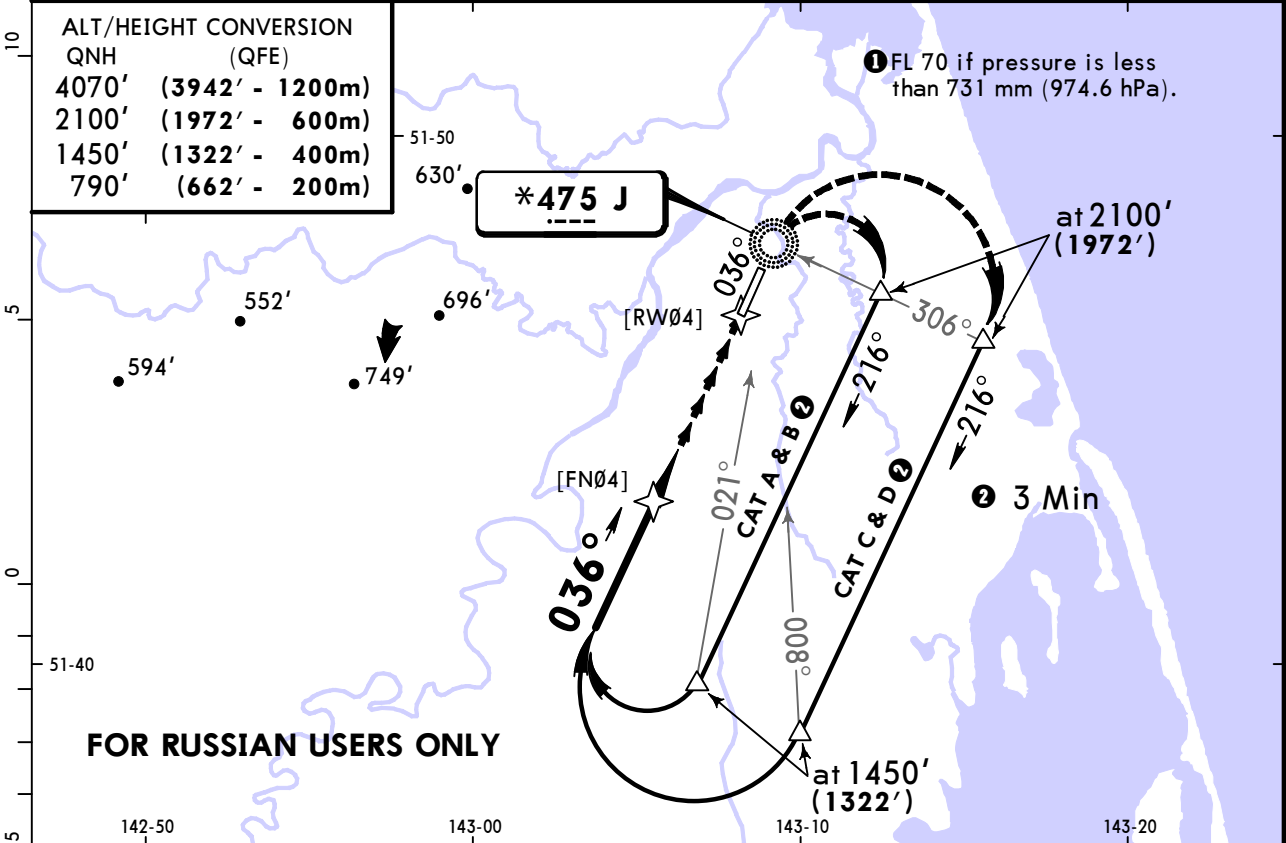
*NOGLIKI Vyshka (TWR)
132.0 Russian only

Lctr J *475	Final Apch Crs 036°	No FAF	MDA(H) 650'(522')	Apt Elev 128' Rwy 128'
--------------------------	----------------------------------	--------	-----------------------------	---------------------------

MISSED APCH: Climb to 790'(662') or above. After passing Lctr turn RIGHT onto 216° climbing to 2100'(1972'), then according to chart.

MSA
J Lctr
within 27 NM

Alt Set: MM (hPa on req) QNH on req (QFE) Trans level: FL 60 **1** Trans alt: 4070' (3942')



Gnd speed-Kts	70	90	100	120	140	160	ALS PAPI	MIM 790' (662')	J 475
Descent Angle	3.08°	381	490	545	654	872			

STRAIGHT-IN LANDING RWY 04		CIRCLE-TO-LAND	
MDA(H) 650'(522')		PROHIBITED West of rwy between 240° and 025°.	
	ALS out	Max Kts	MDA(H)
A		100	
B	2700m	135	650' (522') 2700m
C	2700m	180	720' (592') 2700m
D	2800m	205	820' (692') 3600m

PANS OPS

UHSN/NGK
NOGLIKI

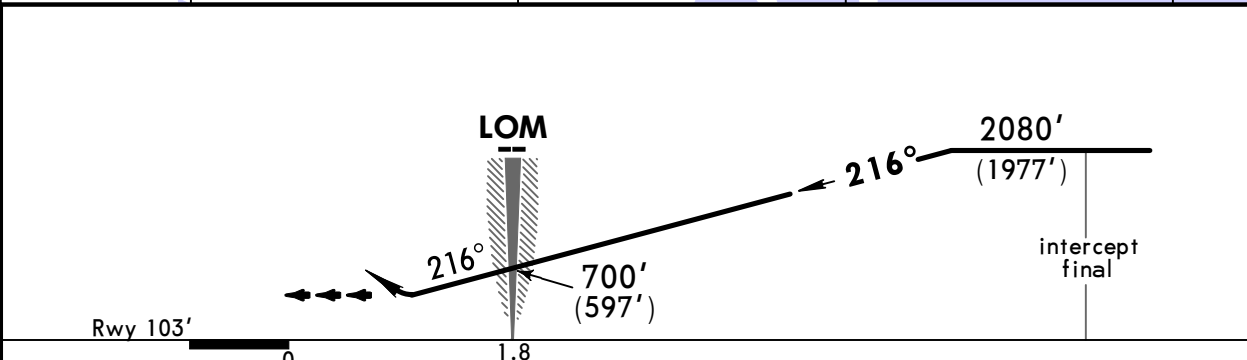
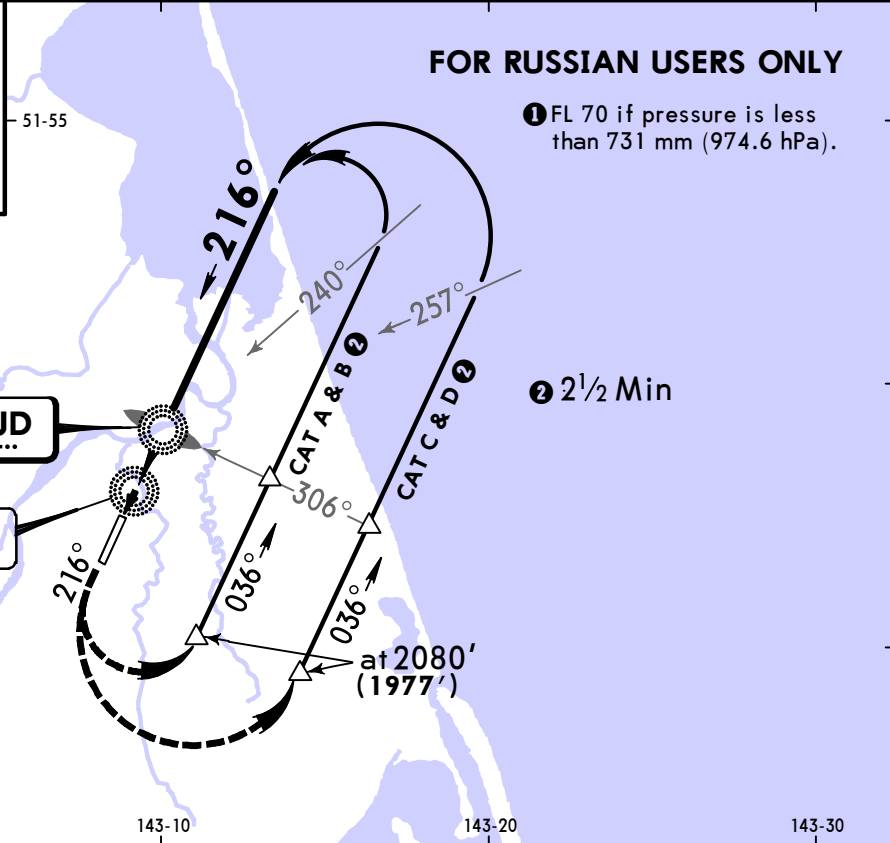
JEPPESEN
19 JAN 18 **(16-2)** Eff 1 Feb

NOGLIKI, RUSSIA
JD NDB Rwy 22

*NOGLIKI Vyshka (TWR)					
132.0 Russian only					
NDB JD *750	Final Apch Crs 216°	No FAF	MDA(H) 480'(377')	Apt Elev 128' Rwy 103'	
MISSED APCH: Climb to 760'(657'), then turn LEFT onto 036° climbing to 2080'(1977'), then according to chart.					MSA J Lctr within 27 NM

Alt Set: MM (hPa on req) QNH on req (QFE) Trans level: FL 60 **1** Trans alt: 4070' (3967')

ALT/HEIGHT CONVERSION	
QNH	(QFE)
4070'	(3967' - 1200m)
2080'	(1977' - 600m)
760'	(657' - 200m)
700'	(597' - 180m)



Gnd speed-Kts	70	90	100	120	140	160
Descent Angle	2.67°	331	425	472	567	661

HIALS PAPI	760' (657')	036° LT	2080' (1977')
---------------	----------------	------------	------------------

STRAIGHT-IN LANDING RWY 22		CIRCLE-TO-LAND	
MDA(H) 480'(377')		PROHIBITED West of rwy between 240° and 025°.	
	ALS out	Max Kts	MDA(H)
A		100	530' (402') 1900m
B	1200m	135	620' (492') 1900m
C		180	720' (592') 2400m
D	1600m	205	820' (692') 3600m

PANS OPS

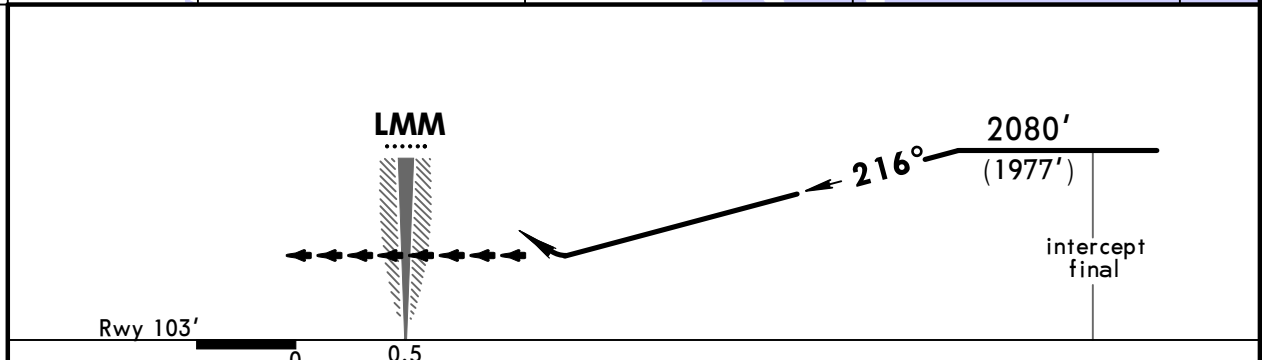
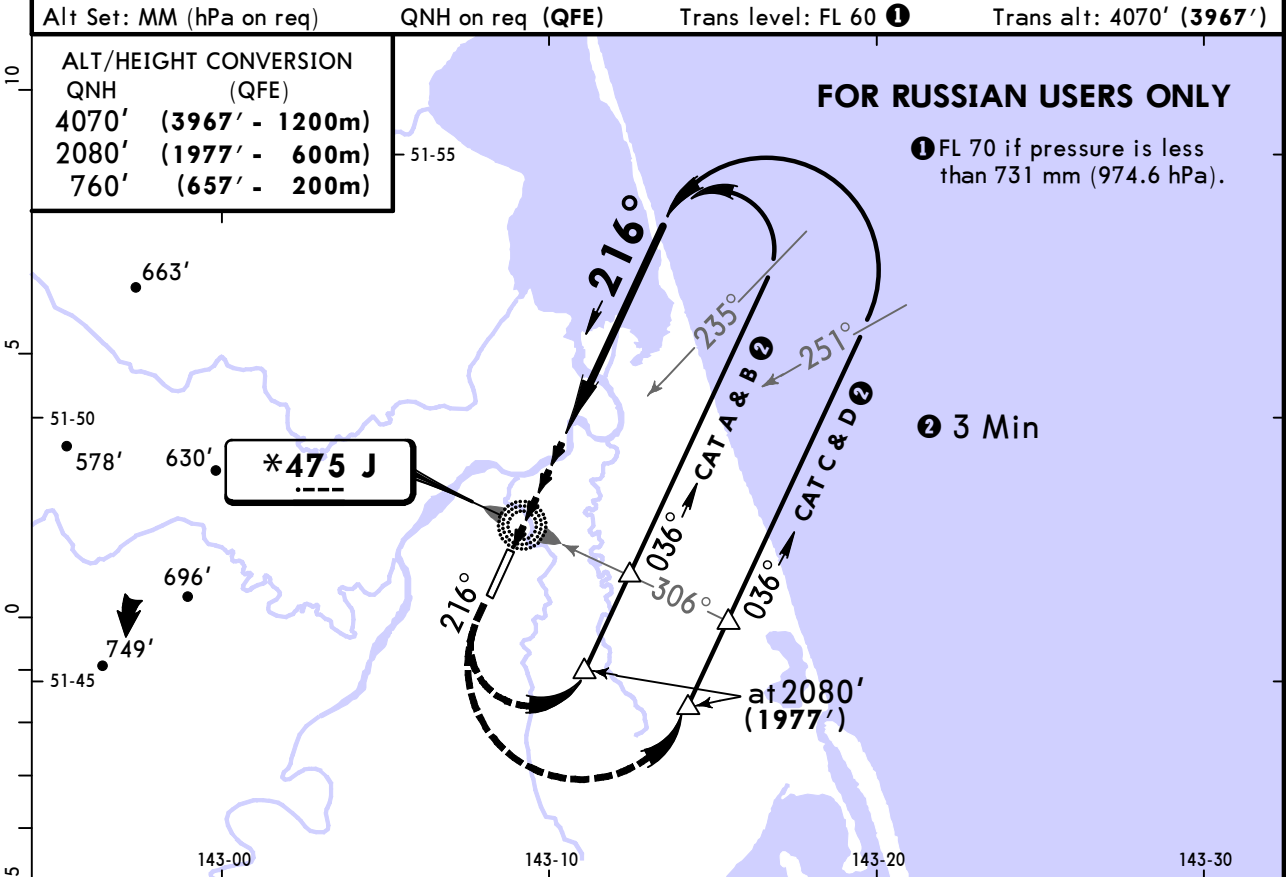
CHANGES: Rwy elevation. Minimums.

UHSN/NGK
NOGLIKI

JEPPESEN
19 JAN 18 **16-3** Eff 1 Feb

NOGLIKI, RUSSIA
J NDB Rwy 22

*NOGLIKI Vyshka (TWR)					
132.0 Russian only					
Lctr J *425	Final Apch Crs 216°	No FAF	MDA(H) 530'(427')	Apt Elev 128' Rwy 103'	
MISSED APCH: Climb to 760'(657'), then turn LEFT onto 036° climbing to 2080'(1977'), then according to chart.					MSA J Lctr within 27 NM
Alt Set: MM (hPa on req)		QNH on req (QFE)		Trans level: FL 60 ①	Trans alt: 4070' (3967')



Gnd speed-Kts	70	90	100	120	140	160	HIALS PAPI	760' (657')	036° LT	2080' (1977')
Descent Angle	2.67°	331	425	472	567	661		756	↑	←

STRAIGHT-IN LANDING RWY 22		CIRCLE-TO-LAND	
MDA(H) 530'(427')		PROHIBITED West of rwy between 240° and 025°.	
		ALS out	
A			Max Kts
B	1700m		_ MDA(H)
C		2500m	100 530' (402') 2500m
D	2100m		135 620' (492') 2500m
			180 720' (592') 2500m
			205 820' (692') 3600m

Chart changes since cycle 08-2019

ADD = added chart, REV = revised chart, DEL = deleted chart.

ACT	PROCEDURE IDENT	INDEX	REV DATE	EFF DATE
-----	-----------------	-------	----------	----------

NOGLIKI, (NOGLIKI - UHSN)

TERMINAL CHART CHANGE NOTICES

Chart Change Notices for Airport UHSN

Type: Terminal

Effectivity: Temporary

Begin Date: Immediately

End Date: 20191031

LOW VISIBILITY PROCEDURE (LVP) are established when RVR is 600m or less. Flight crews will be informed about commencement by ATS by phrase: Low visibility procedures in progress. Check your Minimum. ARRIVAL Crew shall report about leaving of TWY A only after the start of taxiing on the apron, that means the aircraft left ILS critical zone. Crew shall report TWR about the stand occupation: call sign and stand number. DEPARTURE Crew shall read back all instructions of TWR about stand by at the holding position before TWY A. During the operation of LVP the following prohibited: Take-off not from RWY beginning. Take-off w/o stopping at line-up position.