

## List of pages in this Trip Kit

Trip Kit Index  
Airport Information For UHMA  
Terminal Charts For UHMA  
Revision Letter For Cycle 09-2019  
Change Notices  
Notebook

## General Information

Location: ANADYR RUS  
ICAO/IATA: UHMA / DYR  
Lat/Long: N64° 44.1', E177° 44.3'  
Elevation: 194 ft

Airport Use: Public  
Daylight Savings: Not Observed  
UTC Conversion: -12:00 = UTC  
Magnetic Variation: 3.0° E

Fuel Types: Jet A-1  
Customs: Yes  
Airport Type: IFR  
Landing Fee: Yes  
Control Tower: Yes  
Jet Start Unit: No  
LLWS Alert: No  
Beacon: No

Sunrise: 1508 Z  
Sunset: 0903 Z

## Runway Information

Runway: 01  
Length x Width: 11486 ft x 197 ft  
Surface Type: concrete  
TDZ-Elev: 141 ft  
Lighting: Edge, ALS, Centerline, TDZ

Runway: 19  
Length x Width: 11486 ft x 197 ft  
Surface Type: concrete  
TDZ-Elev: 194 ft  
Lighting: Edge, ALS, Centerline

## Communication Information

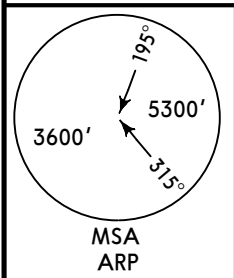
ATIS: 125.400  
ATIS: 126.200 Non-English  
Anadyr Start Tower: 124.000  
Anadyr Ground Ramp/Taxi: 118.800  
Anadyr Approach: 120.000 VHF-DF

UHMA/DYR  
UGOLNY

JEPPESSEN  
3 JUN 16 10-2

ANADYR, RUSSIA  
STAR

*ATIS <b>125.4</b> (*Russian 126.2)	Apt Elev <b>194'</b>	Alt Set: MM (hPa on request) QNH on request (QFE) Trans level: FL70 FL80 if pressure is less than 755 mm (1006.6 hPa) and 728 mm (970.6 hPa) or above FL90 if pressure is less than 728 mm (970.6 hPa) Trans alt: 5450' (5309')
---	-------------------------	---



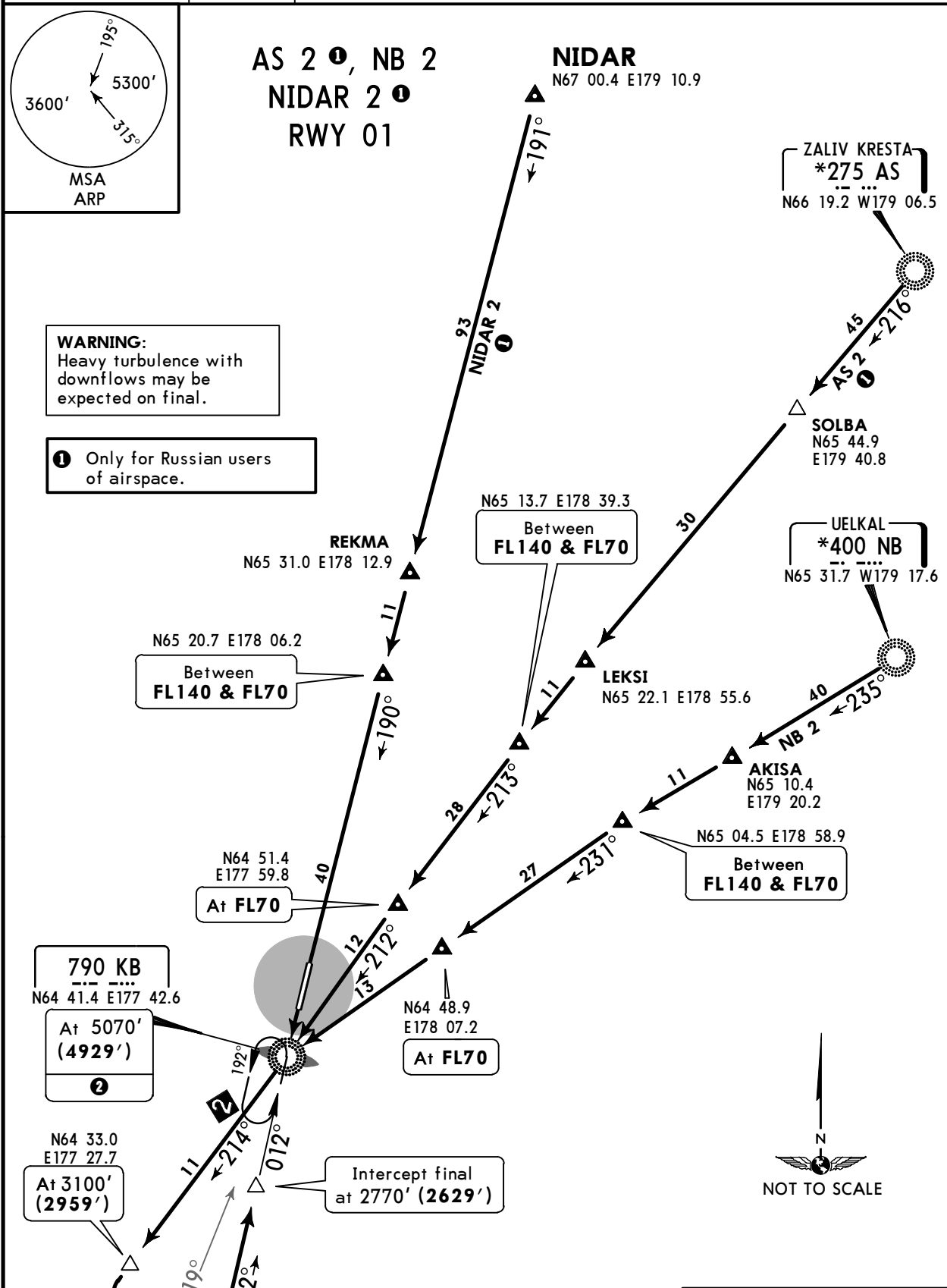
AS 2 ①, NB 2  
NIDAR 2 ①  
RWY 01

NIDAR  
N67 00.4 E179 10.9

ZALIV KRESTA  
\*275 AS  
N66 19.2 W179 06.5

**WARNING:**  
Heavy turbulence with downflows may be expected on final.

① Only for Russian users of airspace.



790 KB  
N64 41.4 E177 42.6  
At 5070'  
(4929')  
②

N64 33.0 E177 27.7  
At 3100'  
(2959')

N64 51.4 E177 59.8  
At FL70

N64 48.9 E178 07.2  
At FL70

N64 31.0 E177 31.6  
At 2770'  
(2629')

Intercept final at 2770' (2629')

② Without radar control:  
At TL descending turn LEFT execute rectangular traffic pattern approach

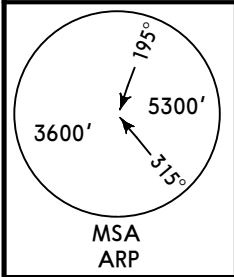
ALT/HEIGHT CONVERSION	
QNH	(QFE)
5450'	(5309' - 1600m)
5070'	(4929' - 1500m)
3100'	(2959' - 900m)
2770'	(2629' - 800m)

UHMA/DYR  
UGOLNY

**JEPPESEN**  
3 JUN 16 (10-2A)

**ANADYR, RUSSIA**  
**STAR**

*ATIS <b>125.4</b> (*Russian 126.2)	Apt Elev <b>194'</b>	Alt Set: MM (hPa on request) QNH on request (QFE) Trans level: FL70 FL80 if pressure is less than 755 mm (1006.6 hPa) and 728 mm (970.6 hPa) or above FL90 if pressure is less than 728 mm (970.6 hPa) Trans alt: 5450' (5256')
---	-------------------------	---



**AS 40 , NB 4, NIDAR 40**  
**RWY 19**

**1** Only for Russian users of airspace.



**NIDAR**  
N67 00.4 E179 10.9

ZALIV KRESTA  
\*275 AS  
N66 19.2 W179 06.5

**WARNING:**  
Heavy turbulence with downflows may be expected on final.

**REKMA**  
N65 31.0 E178 12.9  
N65 20.7 E178 06.2  
Between FL140 & FL70

N64 56.8 E177 52.8  
(193° brg to UX)  
At 2820' (2626')

N64 55.9 E177 51.8  
At 2820' (2626')

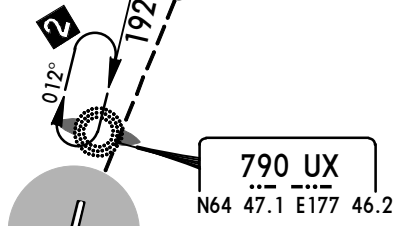
N64 57.2 E177 54.5  
At 3150' (2956')

Intercept final at 2820' (2626')

N65 13.7 E178 39.3  
Between FL140 & FL70

N65 04.5 E178 58.9  
Between FL140 & FL70

**UELKAL**  
\*400 NB  
N65 31.7 W179 17.6



**2** 201° to VDF or 199° to TAR:  
between 16.2 NM and 1.3 NM do not fly east below 3150' (2956').

ALT/HEIGHT CONVERSION	
QNH	(QFE)
5450'	(5256' - 1600m)
3150'	(2956' - 900m)
2820'	(2626' - 800m)

UHMA/DYR  
UGOLNY

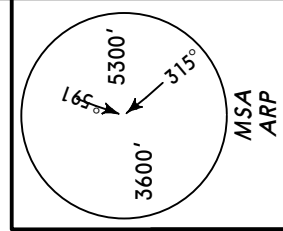
JEPPesen  
25 APR 14 (10-2B) Eff 1 May

ANADYR, RUSSIA

STAR

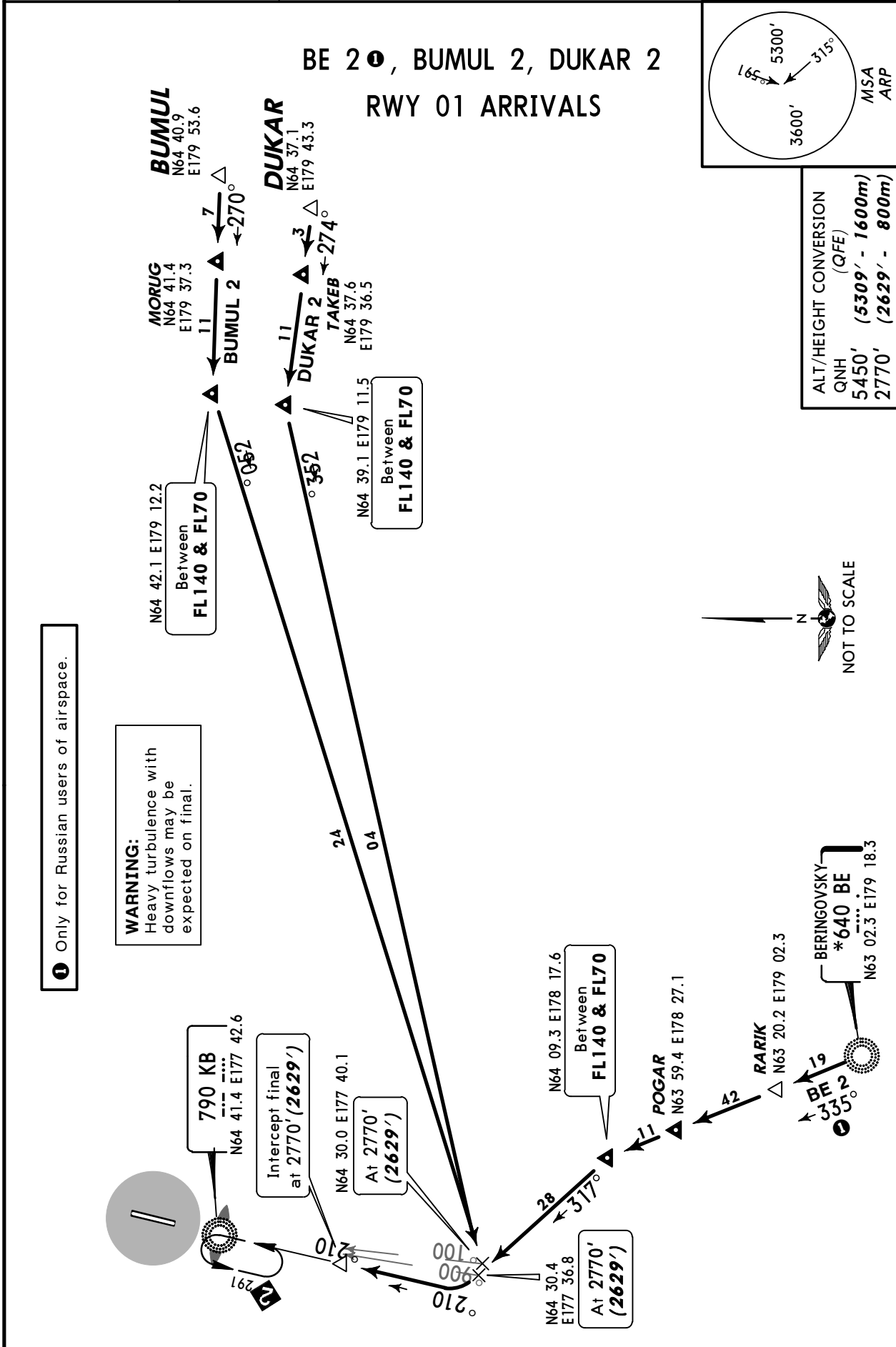
<p>*ATIS <b>125.4</b> (*Russian 126.2)</p>	<p>Apt Elev <b>194'</b></p>	<p>Alt Set: MM (hPa on request) QNH on request (QFE) Trans level: FL70 FL80 if pressure is less than 755 mm (1006.6 hPa) and 728 mm (970.6 hPa) or above FL90 if pressure is less than 728 mm (970.6 hPa) Trans alt: 5450' (<b>5309'</b>)</p>
--	---------------------------------	---

BE 2 ●, BUMUL 2, DUKAR 2  
RWY 01 ARRIVALS



ALT/HEIGHT CONVERSION (QFE)

QNH	5450'
(QFE)	(5309' - 1600m)
	2770' (2629' - 800m)



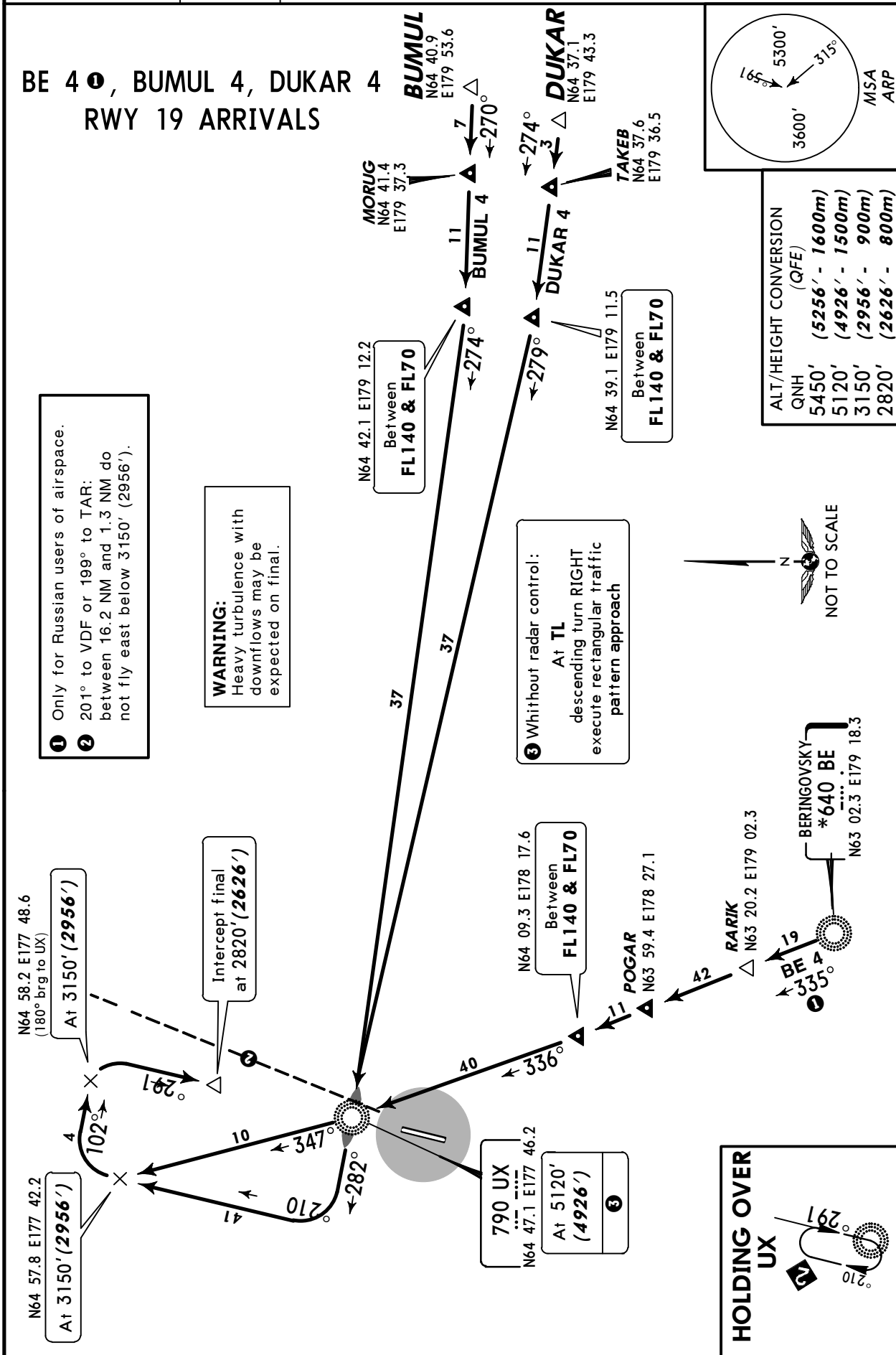
UHMA/DYR  
UGOLNY

JEPPesen  
25 APR 14 10-2C Eff 1 May

ANADYR, RUSSIA  
STAR

*ATIS <b>125.4</b> (*Russian 126.2)	Apt Elev <b>194'</b>	Alt Set: MM (hPa on request) QNH on request (QFE) Trans level: FL70 FL80 if pressure is less than 755 mm (1006.6 hPa) and 728 mm (970.6 hPa) or above FL90 if pressure is less than 728 mm (970.6 hPa) Trans alt: 5450' (5256')
---	-------------------------	---

BE 4 ①, BUMUL 4, DUKAR 4  
RWY 19 ARRIVALS



UHMA/DYR  
UGOLNY

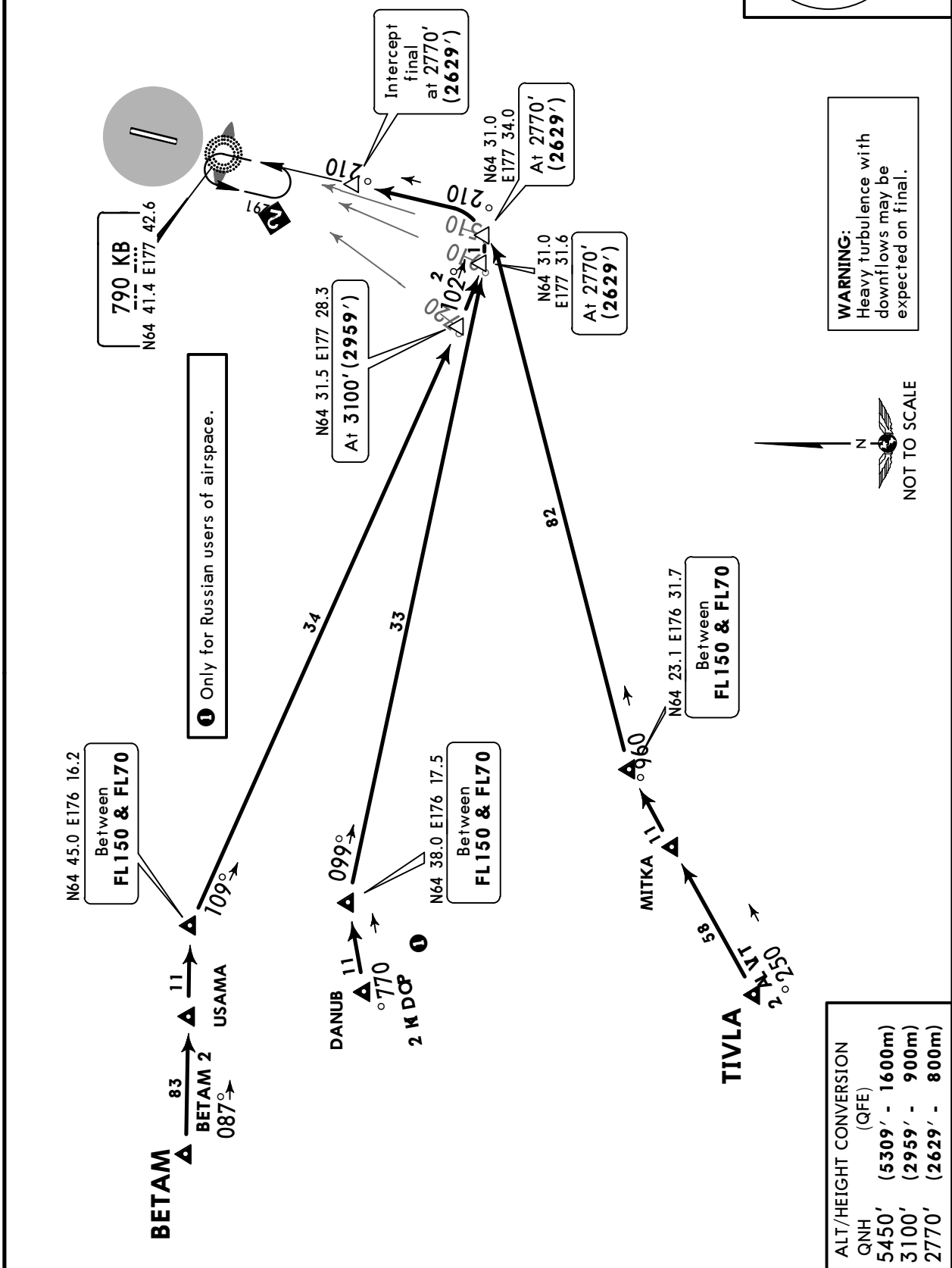
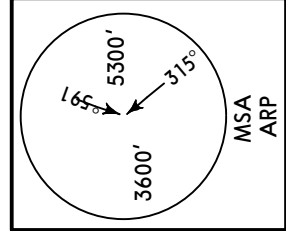
**JEPPesen**  
19 MAY 17 **10-2D** Eff 25 May

**ANADYR, RUSSIA**

**STAR**

*ATIS <b>125.4</b> (*Russian 126.2)	Apt Elev <b>194'</b>	Alt Set: MM (hPa on request) QNH on request (QFE) Trans level: FL70 FL80 if pressure is less than 755 mm (1006.6 hPa) and 728 mm (970.6 hPa) or above FL90 if pressure is less than 728 mm (970.6 hPa) Trans alt: 5450' (5309')
---	-------------------------	---

**BETAM 2, PODIK 2, TIVLA 2  
RWY 01 ARRIVALS**



**ALT/HEIGHT CONVERSION (QFE)**

QNH	5450'	(5309' - 1600m)
	3100'	(2959' - 900m)
	2770'	(2629' - 800m)

CHANGES: DANUB relocated; airway connection withdrawn.

© JEPPESEN, 2013, 2017. ALL RIGHTS RESERVED.

UHMA/DYR  
UGOLNY

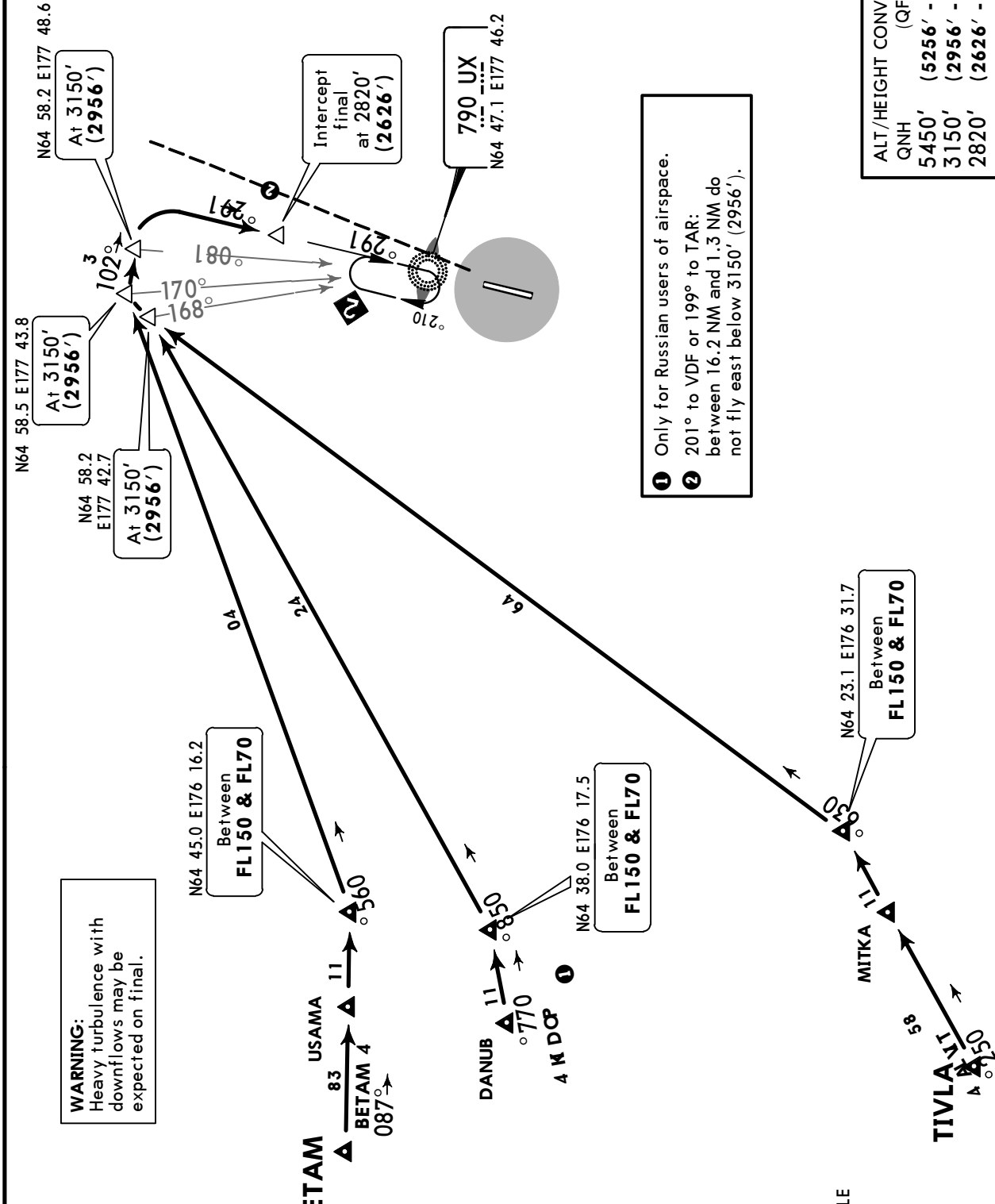
**JEPPesen**  
19 MAY 17 **10-2E** Eff 25 May

**ANADYR, RUSSIA**

**STAR**

*ATIS <b>125.4</b> (*Russian 126.2)	Apt Elev <b>194'</b>	Alt Set: MM (hPa on request) QNH on request (QFE) Trans level: FL70 FL80 if pressure is less than 755 mm (1006.6 hPa) and 728 mm (970.6 hPa) or above FL90 if pressure is less than 728 mm (970.6 hPa) Trans alt: 5450' (5256')
---	-------------------------	---

**BETAM 4, PODIK 4, TIVLA 4  
RWY 19 ARRIVALS**

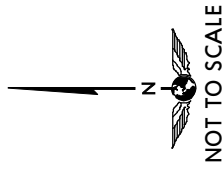
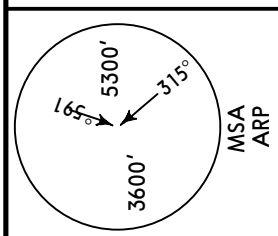


ALT/HEIGHT CONVERSION (QFE)

QNH	5450'	(5256' - 1600m)
	3150'	(2956' - 900m)
	2820'	(2626' - 800m)

- 1 Only for Russian users of airspace.
- 2 201° to VDF or 199° to TAR: between 16.2 NM and 1.3 NM do not fly east below 3150' (2956').

**WARNING:**  
Heavy turbulence with downflows may be expected on final.





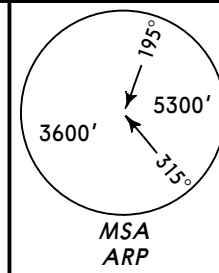
UHMA/DYR  
UGOLNY

**JEPPesen**  
15 NOV 13 **10-2F**

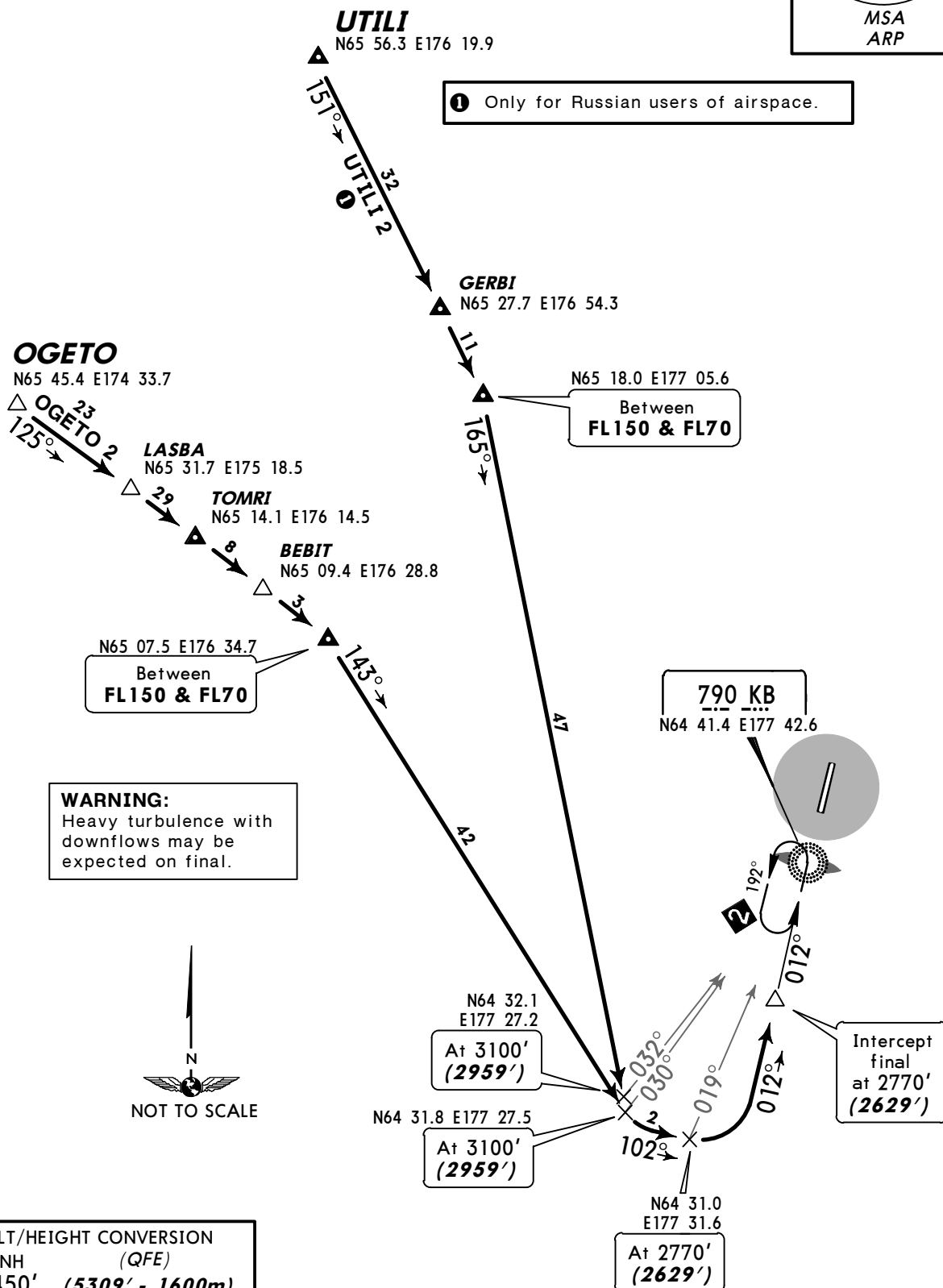
**ANADYR, RUSSIA**  
**STAR**

*ATIS <b>125.4</b> (*Russian <b>126.2</b> )	<i>Apt Elev</i> <b>194'</b>	Alt Set: MM (hPa on request) QNH on request <b>(QFE)</b> Trans level: FL70 FL80 if pressure is less than 755 mm (1006.6 hPa) and 728 mm (970.6 hPa) or above FL90 if pressure is less than 728 mm (970.6 hPa) Trans alt: 5450' <b>(5309')</b>
---	--------------------------------	---

**OGETO 2, UTILI 2  
RWY 01 ARRIVALS**



**1** Only for Russian users of airspace.



ALT/HEIGHT CONVERSION	
QNH	(QFE)
5450'	(5309' - 1600m)
3100'	(2959' - 900m)
2770'	(2629' - 800m)

CHANGES: UTILI 2 STAR availability.

© JEPPESEN, 2013. ALL RIGHTS RESERVED.

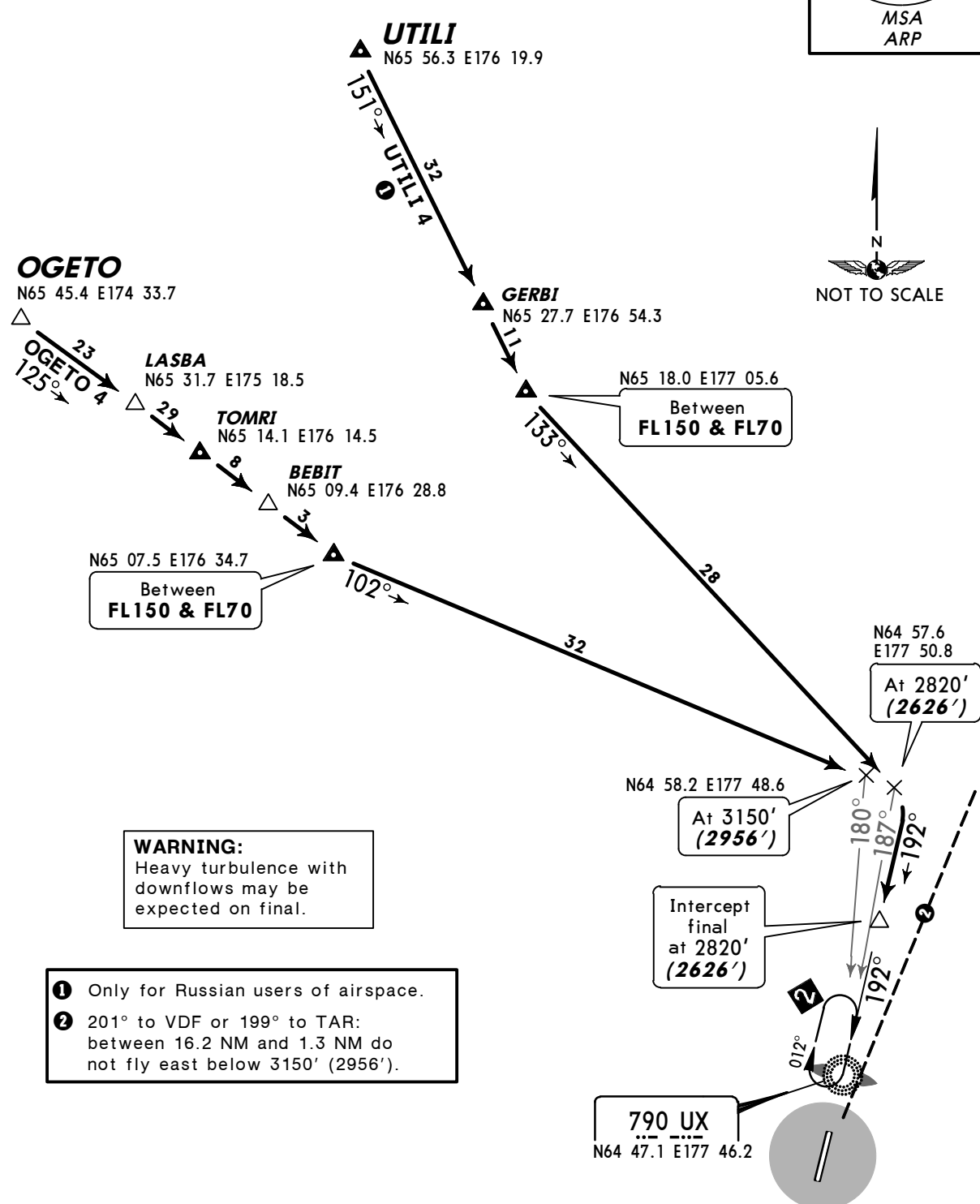
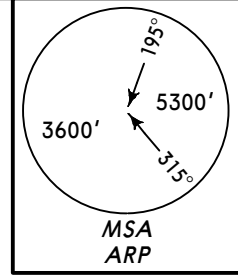
UHMA/DYR  
UGOLNY

JEPPESSEN  
15 NOV 13 (10-2G)

ANADYR, RUSSIA  
STAR

*ATIS <b>125.4</b> (*Russian 126.2)	Apt Elev <b>194'</b>	Alt Set: MM (hPa on request) QNH on request (QFE) Trans level: FL70 FL80 if pressure is less than 755 mm (1006.6 hPa) and 728 mm (970.6 hPa) or above FL90 if pressure is less than 728 mm (970.6 hPa) Trans alt: 5450' (5256')
---	-------------------------	---

OGETO 4, UTILI 4  
RWY 19 ARRIVALS



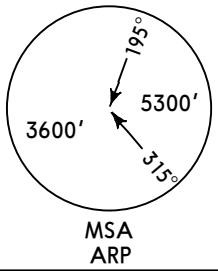
- ① Only for Russian users of airspace.
- ② 201° to VDF or 199° to TAR: between 16.2 NM and 1.3 NM do not fly east below 3150' (2956').

ALT/HEIGHT CONVERSION	QNH (QFE)
5450'	(5256' - 1600m)
3150'	(2956' - 900m)
2820'	(2626' - 800m)

UHMA/DYR  
UGOLNY

**JEPPESEN**  
3 JUN 16 **10-3**

**ANADYR, RUSSIA**  
**SID**



Apt Elev **194'**  
 QNH on request (QFE)  
 Trans level: FL70  
 FL80 if pressure is less than 755 mm (1006.6 hPa) and 728 mm (970.6 hPa) or above  
 FL90 if pressure is less than 728 mm (970.6 hPa)  
 Trans alt: 5450' (5309')

AS 1 ●, NB 1  
 NIDAR 1 ●  
 RWY 01

**NIDAR**  
 N67 00.4 E179 10.9

ZALIV KRESTA  
 \*275 AS  
 N66 19.2 W179 06.5

**SOLBA**  
 N65 44.9 E179 40.8

**REKMA**  
 N65 31.0 E178 12.9

N65 13.7 E178 39.3  
 Between  
**FL70 & FL150**

UELKAL  
 \*400 NB  
 N65 31.7 W179 17.6

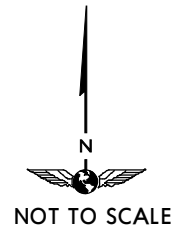
N65 20.7 E178 06.2  
 Between  
**FL70 & FL150**

**LEKSI**  
 N65 22.1 E178 55.6

**AKISA**  
 N65 10.4  
 E179 20.2

At 3100'  
 (2959')  
 but not before  
 14.6 NM from  
 THR RWY 19

N65 04.5 E178 58.9  
 Between  
**FL70 & FL150**



**WARNING:**  
 Heavy turbulence with downflows  
 may be expected during climbing.

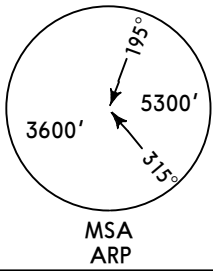
- 1 Only for Russian users of airspace.
- 2 021° to VDF or 019° to TAR:  
 between 1.3 NM and 16.2 NM do  
 not fly east below 3100' (2959').

ALT/HEIGHT CONVERSION	
QNH	(QFE)
3100'	(2959' - 900m)
5450'	(5309' - 1600m)

UHMA/DYR  
UGOLNY

JEPPESEN  
3 JUN 16 (10-3A)

ANADYR, RUSSIA  
SID



Apt Elev  
**194'**

QNH on request (QFE)  
Trans level: FL70  
FL80 if pressure is less than 755 mm (1006.6 hPa)  
and 728 mm (970.6 hPa) or above  
FL90 if pressure is less than 728 mm (970.6 hPa)  
Trans alt: 5450' (5256')

AS 3 ①, NB 3  
NIDAR 3 ①  
RWY 19

**NIDAR**  
N67 00.4 E179 10.9

ZALIV KRESTA  
\*275 AS  
N66 19.2 W179 06.5

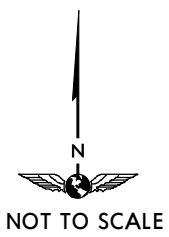
① Only for Russian users  
of airspace.

N65 20.7 E178 06.2  
Between  
FL70 & FL150

N65 13.7 E178 39.3  
Between  
FL70 & FL150

UELKAL  
\*400 NB  
N65 31.7 W179 17.6

N65 04.5 E178 58.9  
Between  
FL70 & FL150



**WARNING:**  
Heavy turbulence with downflows  
may be expected during climbing.

790 UX  
N64 47.1 E177 46.2

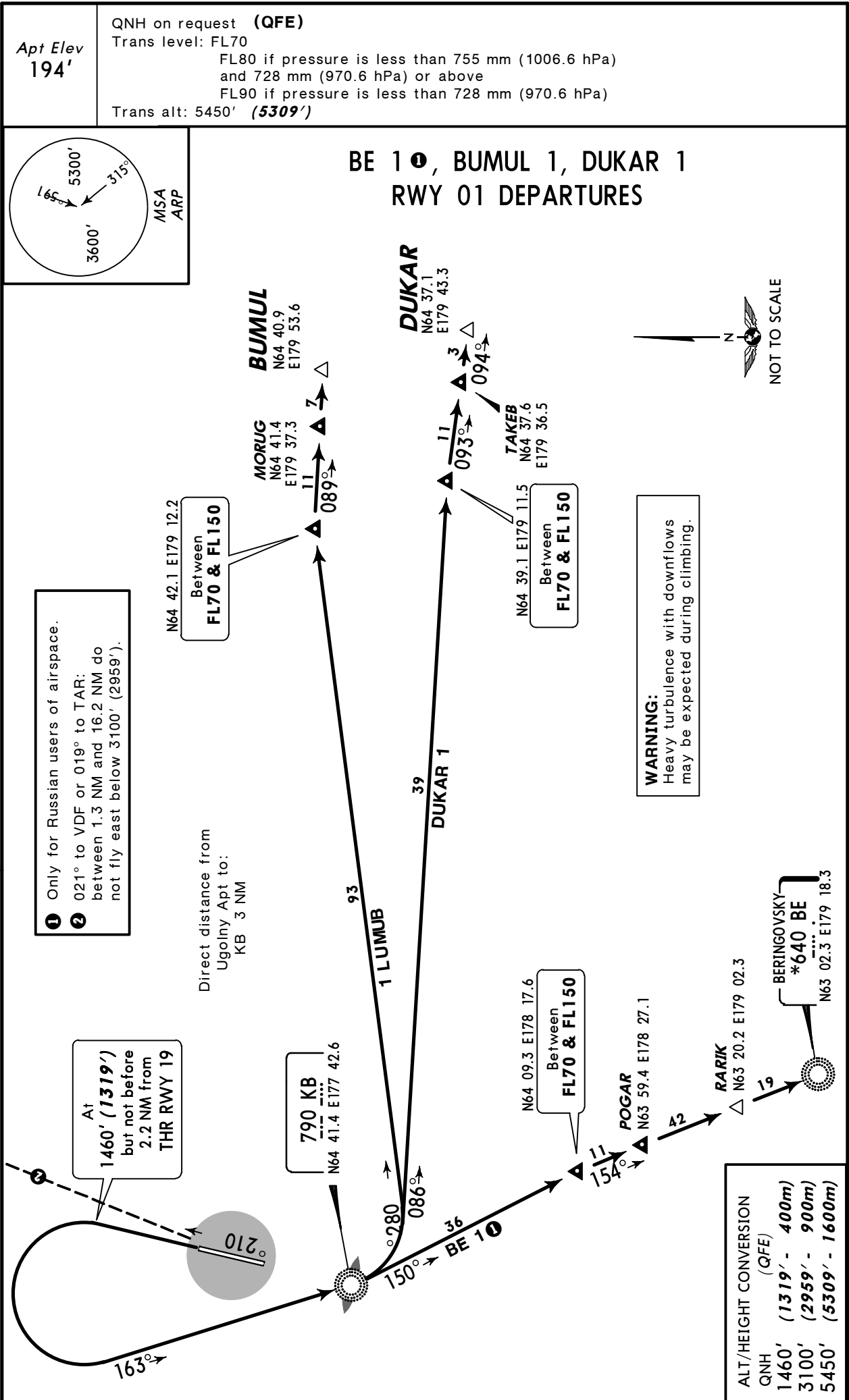
At 1510'  
(1316')  
but not before  
2.2 NM from  
THR RWY 01

ALT/HEIGHT CONVERSION	
QNH	(QFE)
1510'	(1316' - 400m)
3150'	(2956' - 900m)
5450'	(5256' - 1600m)

UHMA/DYR  
UGOLNY

JEPPESSEN  
25 APR 14 10-3B Eff 1 May

ANADYR, RUSSIA  
SID

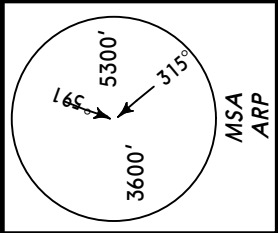


UHMA/DYR  
UGOLNY

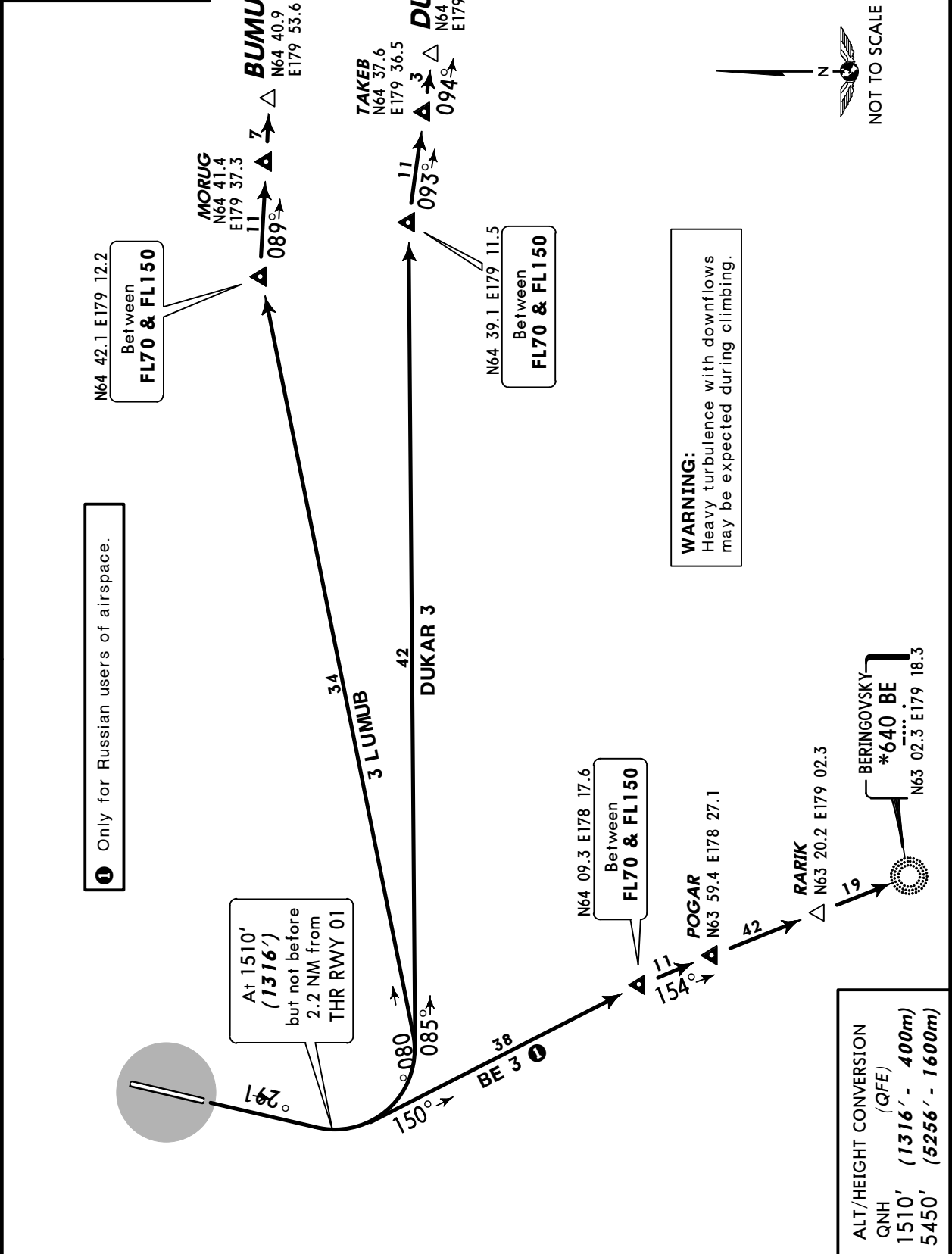
JEPPesen  
25 APR 14 10-3C Eff 1 May

ANADYR, RUSSIA  
SID

QNH on request (QFE)  
Trans level: FL70  
FL80 if pressure is less than 755 mm (1006.6 hPa)  
and 728 mm (970.6 hPa) or above  
FL90 if pressure is less than 728 mm (970.6 hPa)  
Trans alt: 5450' (5256')



BE 3, BUMUL 3, DUKAR 3  
RWY 19 DEPARTURES



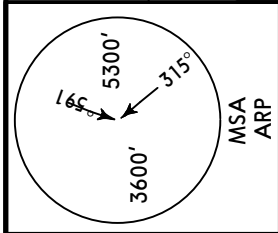
UHMA/DYR  
UGOLNY

JEPPESEN  
19 MAY 17 10-3D Eff 25 May

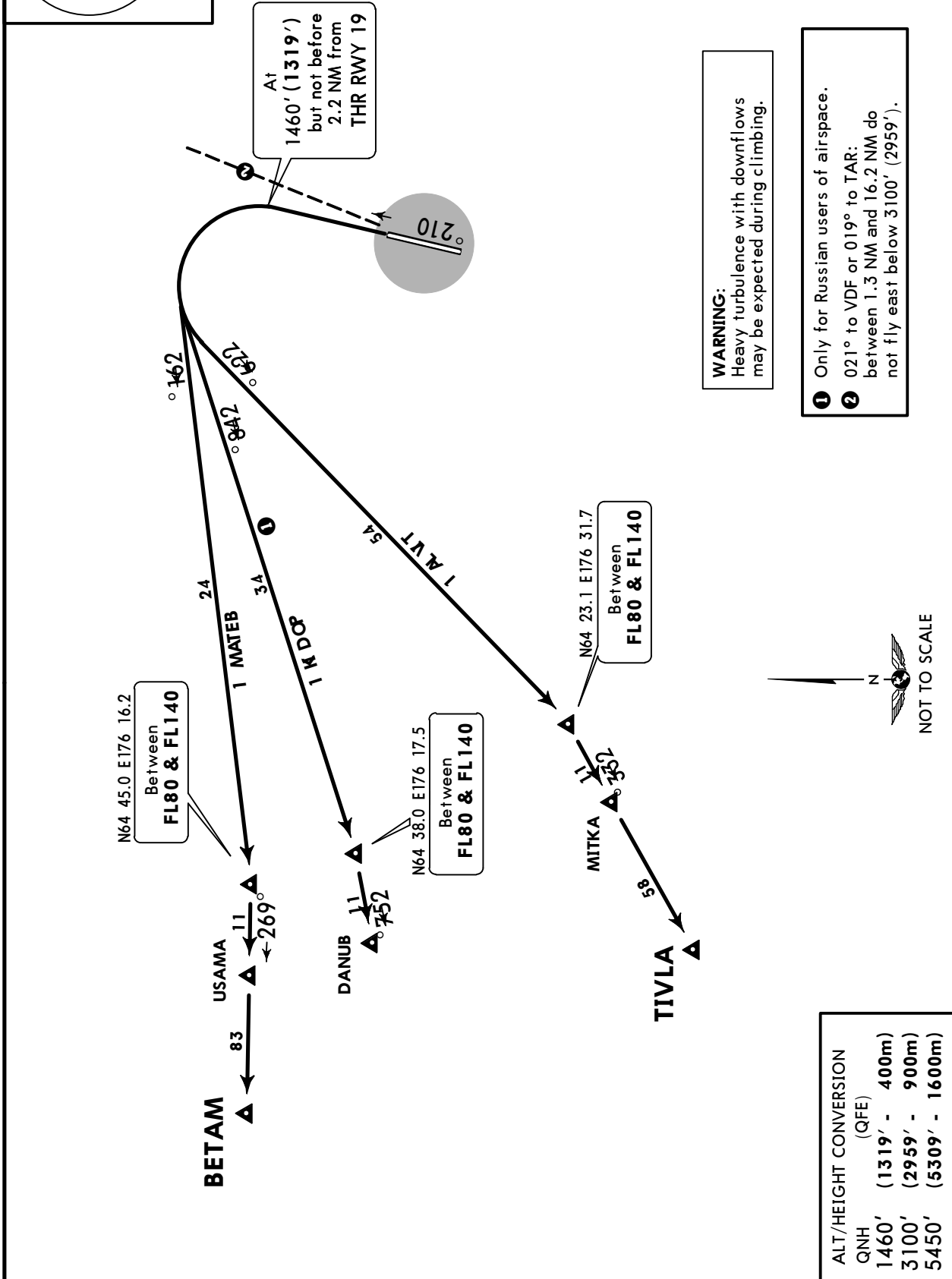
ANADYR, RUSSIA

SID

Apt Elev 194'  
QNH on request (QFE)  
Trans level: FL70  
FL80 if pressure is less than 755 mm (1006.6 hPa) and 728 mm (970.6 hPa) or above  
FL90 if pressure is less than 728 mm (970.6 hPa)  
Trans alt: 5450' (5309')



BETAM 1, PODIK 1, TIVLA 1  
RWY 01 DEPARTURES



CHANGES: DANUB relocated; airway connection withdrawn.

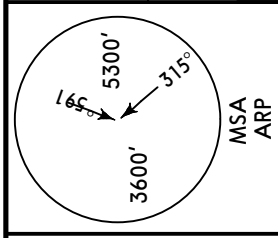
UHMA/DYR  
UGOLNY

JEPPESEN  
19 MAY 17 10-3E Eff 25 May

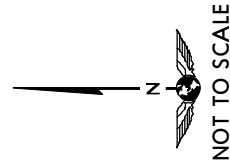
ANADYR, RUSSIA

SID

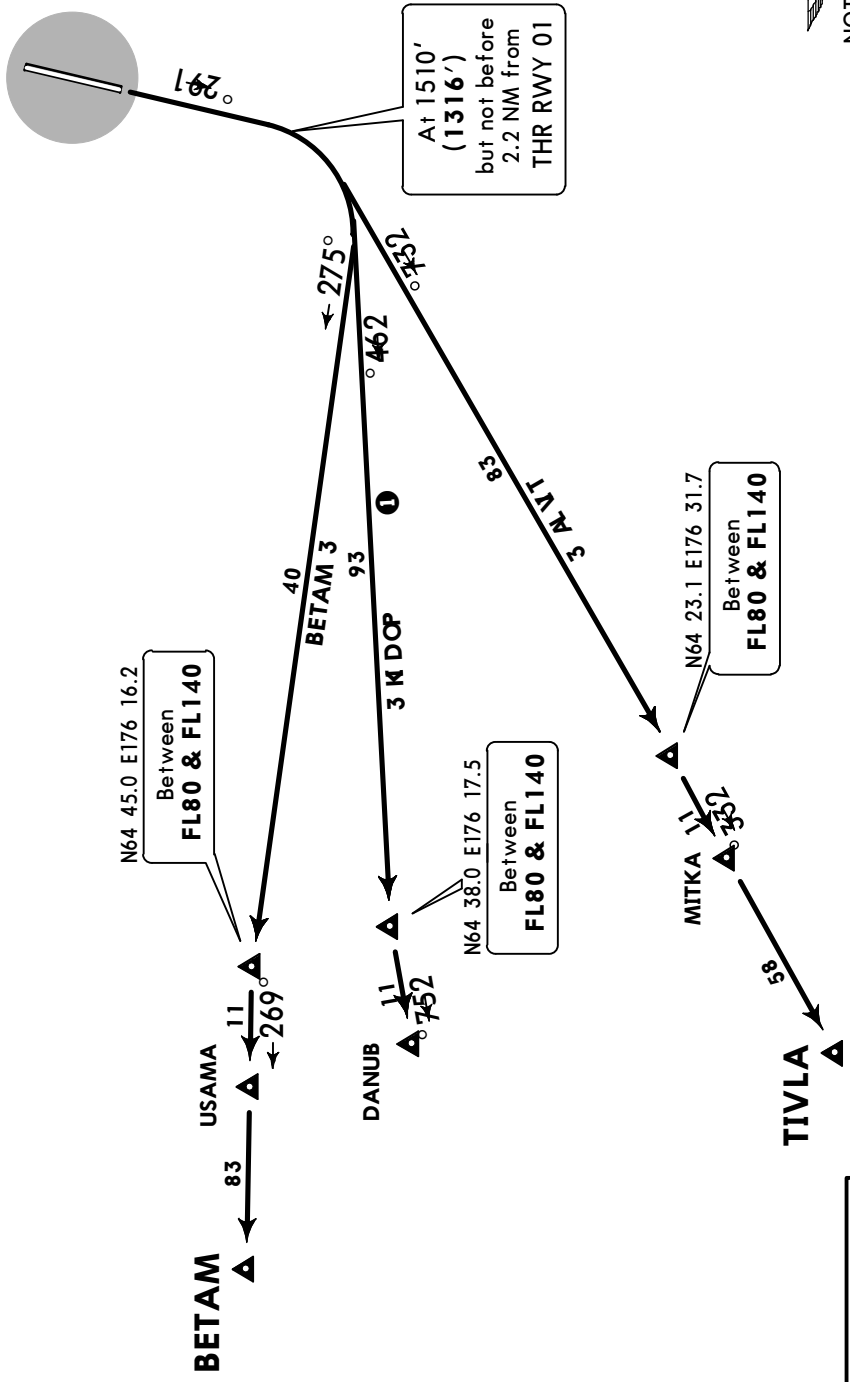
Apt Elev 194'  
QNH on request (QFE)  
Trans level: FL70  
FL80 if pressure is less than 755 mm (1006.6 hPa) and 728 mm (970.6 hPa) or above  
FL90 if pressure is less than 728 mm (970.6 hPa)  
Trans alt: 5450' (5256')



BETAM 3, PODIK 3, TIVLA 3  
RWY 19 DEPARTURES



① Only for Russian users of airspace.  
**WARNING:** Heavy turbulence with downflows may be expected during climbing.



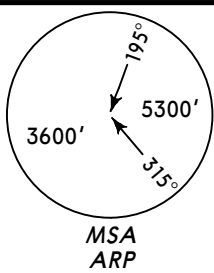
ALT/HEIGHT CONVERSION  
QNH (QFE)  
1510' (1316' - 400m)  
5450' (5256' - 1600m)



UHMA/DYR  
UGOLNY

**JEPPESEN**  
15 NOV 13 (10-3F)

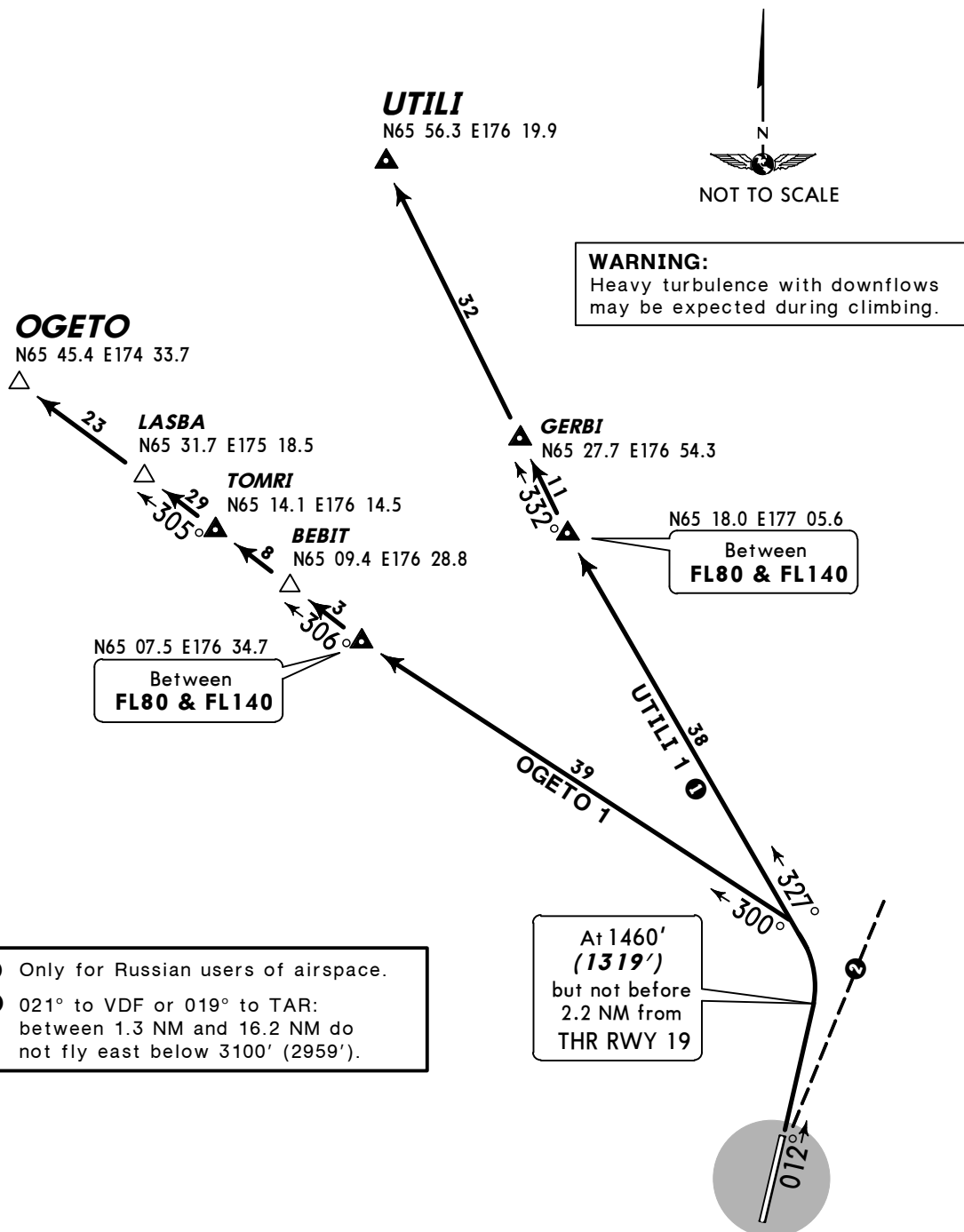
**ANADYR, RUSSIA**  
**SID**



*Apt Elev*  
**194'**

QNH on request (QFE)  
Trans level: FL70  
FL80 if pressure is less than 755 mm (1006.6 hPa) and 728 mm (970.6 hPa) or above  
FL90 if pressure is less than 728 mm (970.6 hPa)  
Trans alt: 5450' (5309')

**OGETO 1, UTILI 1**  
**RWY 01 DEPARTURES**



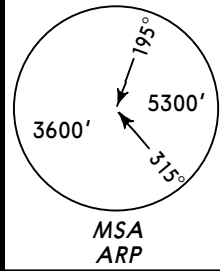
- ① Only for Russian users of airspace.
- ② 021° to VDF or 019° to TAR: between 1.3 NM and 16.2 NM do not fly east below 3100' (2959').

ALT/HEIGHT CONVERSION	
QNH	(QFE)
1460'	(1319' - 400m)
3100'	(2959' - 900m)
5450'	(5309' - 1600m)

UHMA/DYR  
UGOLNY

JEPPESEN  
15 NOV 13 (10-3G)

ANADYR, RUSSIA  
SID



Apt Elev 194'

QNH on request (QFE)  
Trans level: FL70  
FL80 if pressure is less than 755 mm (1006.6 hPa) and 728 mm (970.6 hPa) or above  
FL90 if pressure is less than 728 mm (970.6 hPa)  
Trans alt: 5450' (5256')

OGETO 3, UTILI 3  
RWY 19 DEPARTURES

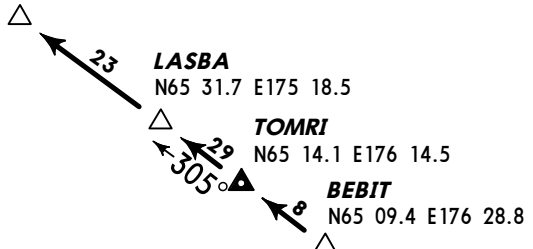
UTILI  
N65 56.3 E176 19.9



① Only for Russian users of airspace.

**WARNING:**  
Heavy turbulence with downflows may be expected during climbing.

OGETO  
N65 45.4 E174 33.7



N65 07.5 E176 34.7  
Between FL80 & FL140

N65 18.0 E177 05.6  
Between FL80 & FL140

GERBI  
N65 27.7 E176 54.3

ALT/HEIGHT CONVERSION  
QNH (QFE)  
1510' (1316' - 400m)  
5450' (5256' - 1600m)

At 1510' (1316')  
but not before 2.2 NM from THR RWY 01

# UHMA/DYR

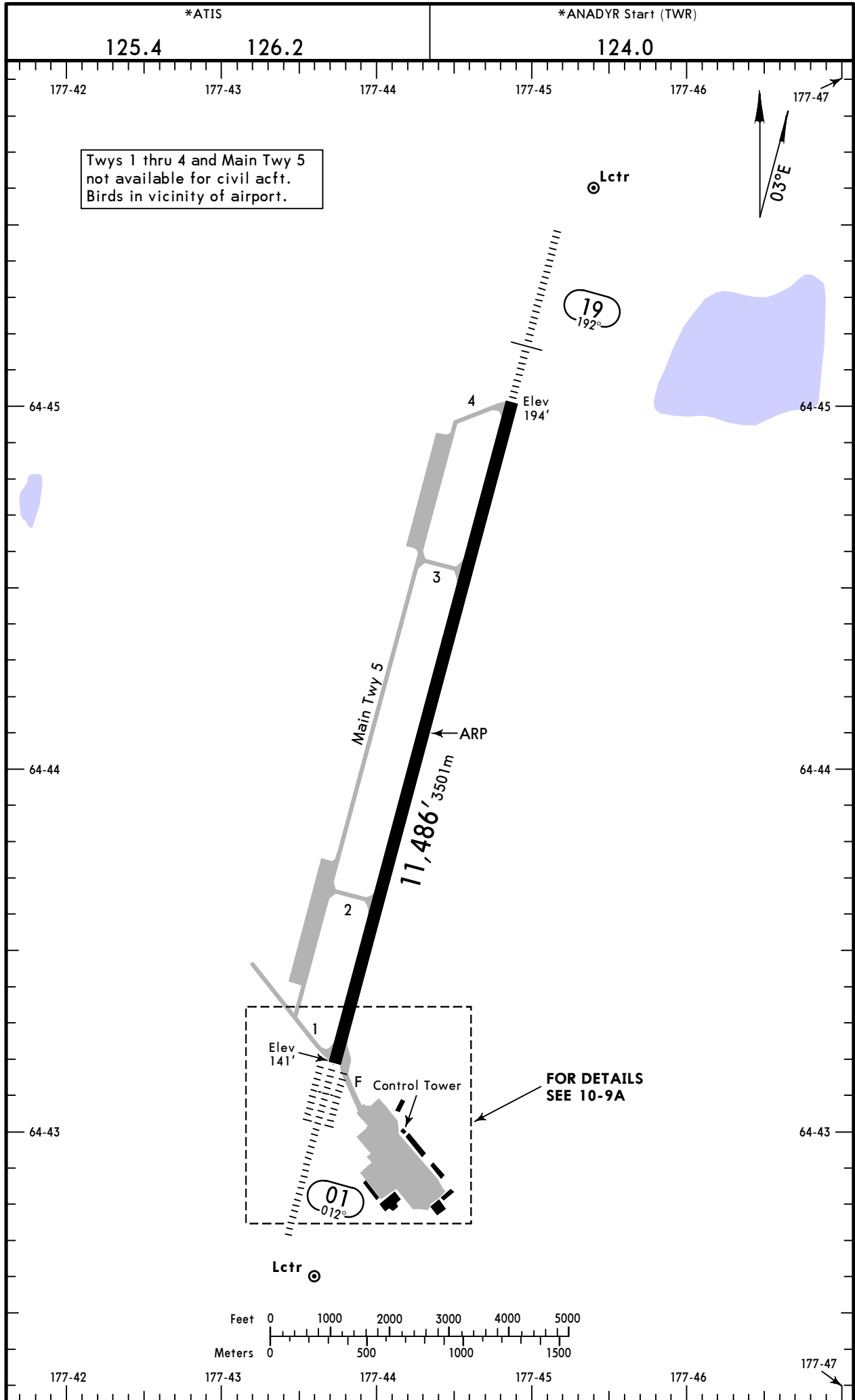
Apt Elev 194'  
N64 44.1 E177 44.3



3 APR 15 (10-9)

# ANADYR, RUSSIA

UGOLNY



Twys 1 thru 4 and Main Twy 5 not available for civil acct. Birds in vicinity of airport.

(19) 192°

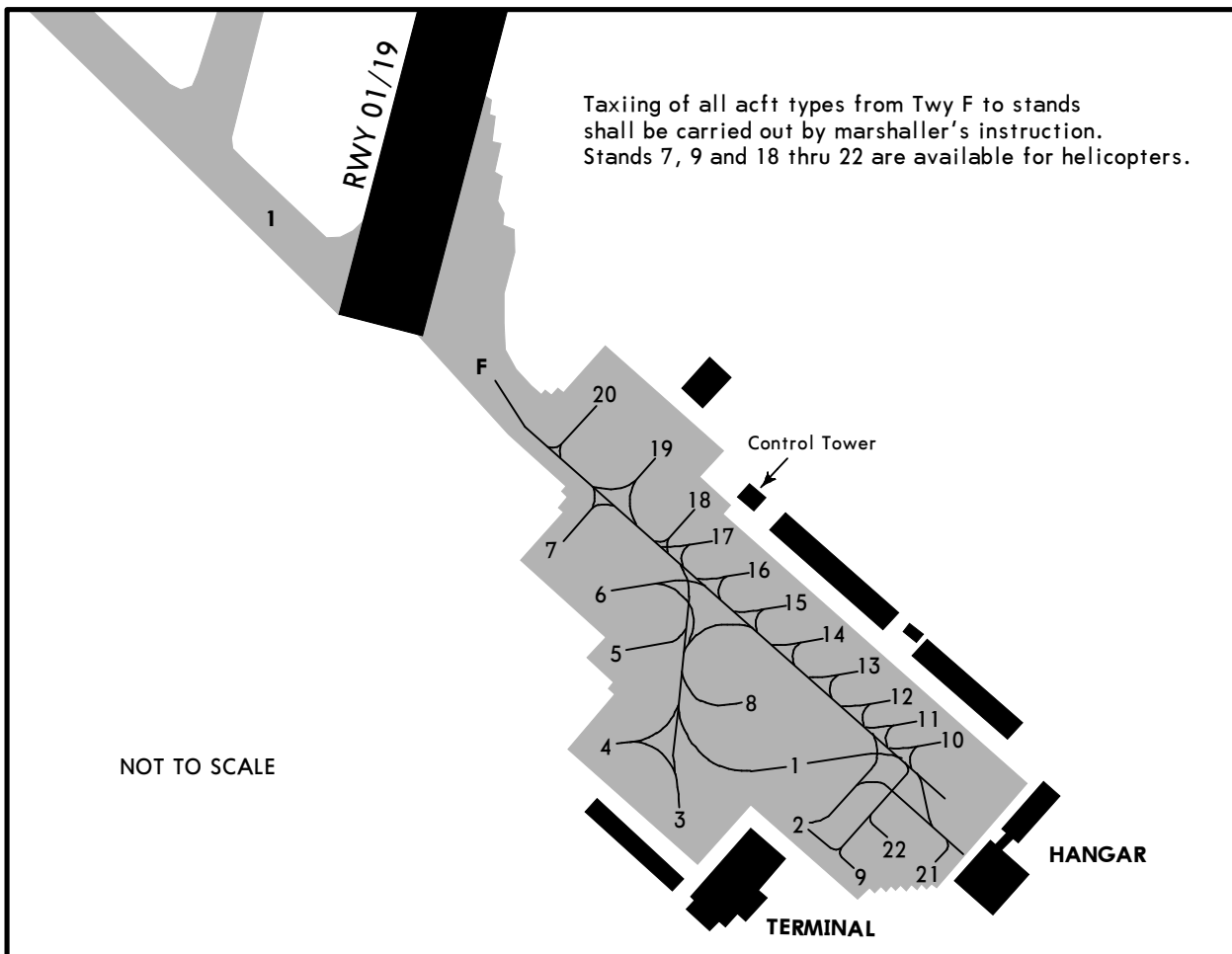
(01) 012°

FOR DETAILS SEE 10-9A

UHMA/DYR

JEPPesen  
3 APR 15 (10-9A)

ANADYR, RUSSIA  
UGOLNY



RWY	ADDITIONAL RUNWAY INFORMATION					USABLE LENGTHS		WIDTH	
	RL (60m)	CL (15m)	HIALS-II	TDZ	PAPI-L (3.0°)	RVR	LANDING BEYOND		TAKE-OFF
01	RL (60m)	CL (15m)	HIALS-II	TDZ	PAPI-L (3.0°)	RVR	Threshold		
19	RL (60m)	CL (15m)	HIALS		PAPI-L (3.0°)	RVR	Glide Slope		197' 60m

### LOW VISIBILITY PROCEDURES (LVP)

Procedures are applied when RVR 550m or less. ATC will inform pilots using phraseology: "LVP in progress. Check your minimum." During LVP only one acft permitted on rwy and twy.

**DEPARTURE**  
Taxi route to rwy 01/19 holding position along Twy F shall be assigned by Start controller. Towing is compulsory.  
Flight crew shall read back all instructions of Start controller.  
Flight crew shall bear responsibility for rwy 01/19 incursion and non-adherence to the assigned taxi routes in the manoeuvring area.

The following is prohibited during LVP:  
 - take-off not from the runway beginning.  
 - take-off without stop on the line-up position.

When RVR is more than 550m, the flight crew will be informed via ATIS or ATS unit by phrase: "LVP terminated."

	TAKE-OFF		
	AIR CARRIER (JAA) All Rwys		
	LVP must be in force		
	RL & CL	RCLM (DAY only) or RL	RCLM (DAY only) or RL
A			
B	150m	250m	400m
C			
D	200m	300m	

UHMA/DYR


  
 24 JUN 16 **10-9S**
**Standard**  
**ANADYR, RUSSIA**  
**UGOLNY**

STRAIGHT-IN RWY	A	B	C	D	
01	ILS	<b>358'</b> (217')	<b>367'</b> (226')	<b>377'</b> (236')	<b>387'</b> (246')
	FULL	<b>R550m</b>	<b>R550m</b>	<b>R550m</b>	<b>R550m</b>
	Limited	R750m	R750m	R750m	R750m
	ALS out	R1200m	R1200m	R1200m	R1300m
	LOC	NOT AUTH	NOT AUTH	NOT AUTH	NOT AUTH
	2 NDB ①	<b>650'</b> (509')	<b>650'</b> (509')	<b>650'</b> (509')	<b>650'</b> (509')
	ALS out	R1500m	R1500m	C2400m	C2400m
	2 NDB ②	<b>650'</b> (509')	<b>650'</b> (509')	<b>650'</b> (509')	<b>650'</b> (509')
	ALS out	C2400m	C2400m	C2400m	C2400m
	KB NDB	<b>1240'</b> (1099')	<b>1240'</b> (1099')	<b>1240'</b> (1099')	<b>1240'</b> (1099')
ALS out	C4300m	C4300m	C4500m	C4500m	
K Lctr	<b>1200'</b> (1059')	<b>1200'</b> (1059')	<b>1200'</b> (1059')	<b>1200'</b> (1059')	
ALS out	C4300m	C4300m	C4500m	C4500m	
ALS out	C5000m	C5000m	C5000m	C5000m	
19	ILS	<b>394'</b> (200')	<b>394'</b> (200')	<b>394'</b> (200')	<b>404'</b> (210')
	FULL	<b>R550m</b>	<b>R550m</b>	<b>R550m</b>	<b>R550m</b>
	Limited	R750m	R750m	R750m	R750m
	ALS out	R1200m	R1200m	R1200m	R1200m
	LOC	NOT AUTH	NOT AUTH	NOT AUTH	NOT AUTH
	2 NDB ① ③	<b>550'</b> (356')	<b>550'</b> (356')	<b>550'</b> (356')	<b>550'</b> (356')
	ALS out	R1000m	R1000m	R1200m	R1200m
	ALS out	R1600m	R1600m	R1600m	R1600m
	2 NDB ① ④	<b>1020'</b> (826')	<b>1020'</b> (826')	<b>1020'</b> (826')	<b>1020'</b> (826')
	ALS out	C3100m	C3100m	C3100m	C3100m
ALS out	C3800m	C3800m	C3800m	C3800m	
UX NDB ① ③	<b>890'</b> (696')	<b>890'</b> (696')	<b>890'</b> (696')	<b>890'</b> (696')	
ALS out	C2500m	C2500m	C2500m	C2500m	
ALS out	C3200m	C3200m	C3200m	C3200m	
UX NDB ① ④	<b>1070'</b> (876')	<b>1070'</b> (876')	<b>1070'</b> (876')	<b>1070'</b> (876')	
ALS out	C3300m	C3300m	C3300m	C3300m	
ALS out	C4000m	C4000m	C4000m	C4000m	

① Continuous Descent Final Approach.

② Continuous Descent Final Approach beginning at LOM.

③ with Radar.

④ w/o Radar.

UHMA/DYR

**JEPPESEN**  
24 JUN 16 (10-9S1)

**Standard**  
**ANADYR, RUSSIA**  
UGOLNY

STRAIGHT-IN RWY		A	B	C	D
19	U Lctr ①	890'(696') C2700m	890'(696') C2700m	890'(696') C2900m	890'(696') C2900m
	ALS out	C3400m	C3400m	C3600m	C3600m
	U Lctr ②	1070'(876') C3500m	1070'(876') C3500m	1070'(876') C3700m	1070'(876') C3700m
	ALS out	C4200m	C4200m	C4400m	C4400m

① with Radar.

② w/o Radar.

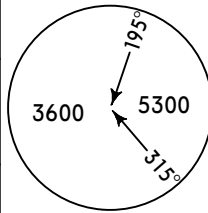
**TAKE-OFF RWY 01, 19**

	Approved Operators	LVP must be in Force				NIL (DAY only)
	HIRL, CL & mult. RVR req	RL, CL & mult. RVR req	RL & CL	RCLM (DAY only) or RL	RCLM (DAY only) or RL	
A	125m	150m	200m	250m	400m	500m
B						
C						
D	150m	200m	250m	300m		

**UHMA/DYR**  
**UGOLNY**

**JEPPESEN**  
15 SEP 17 **(11-1)**

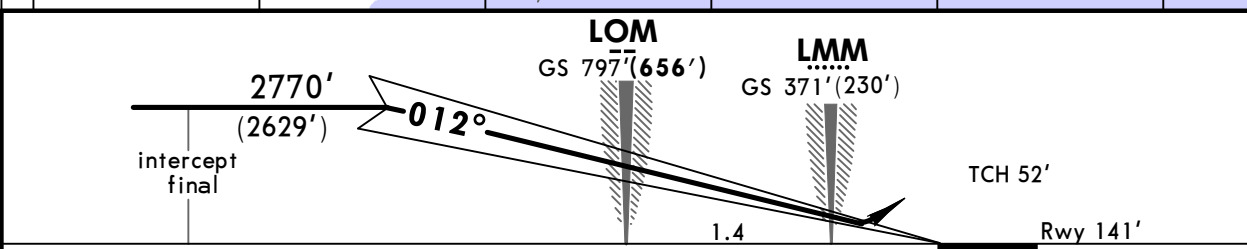
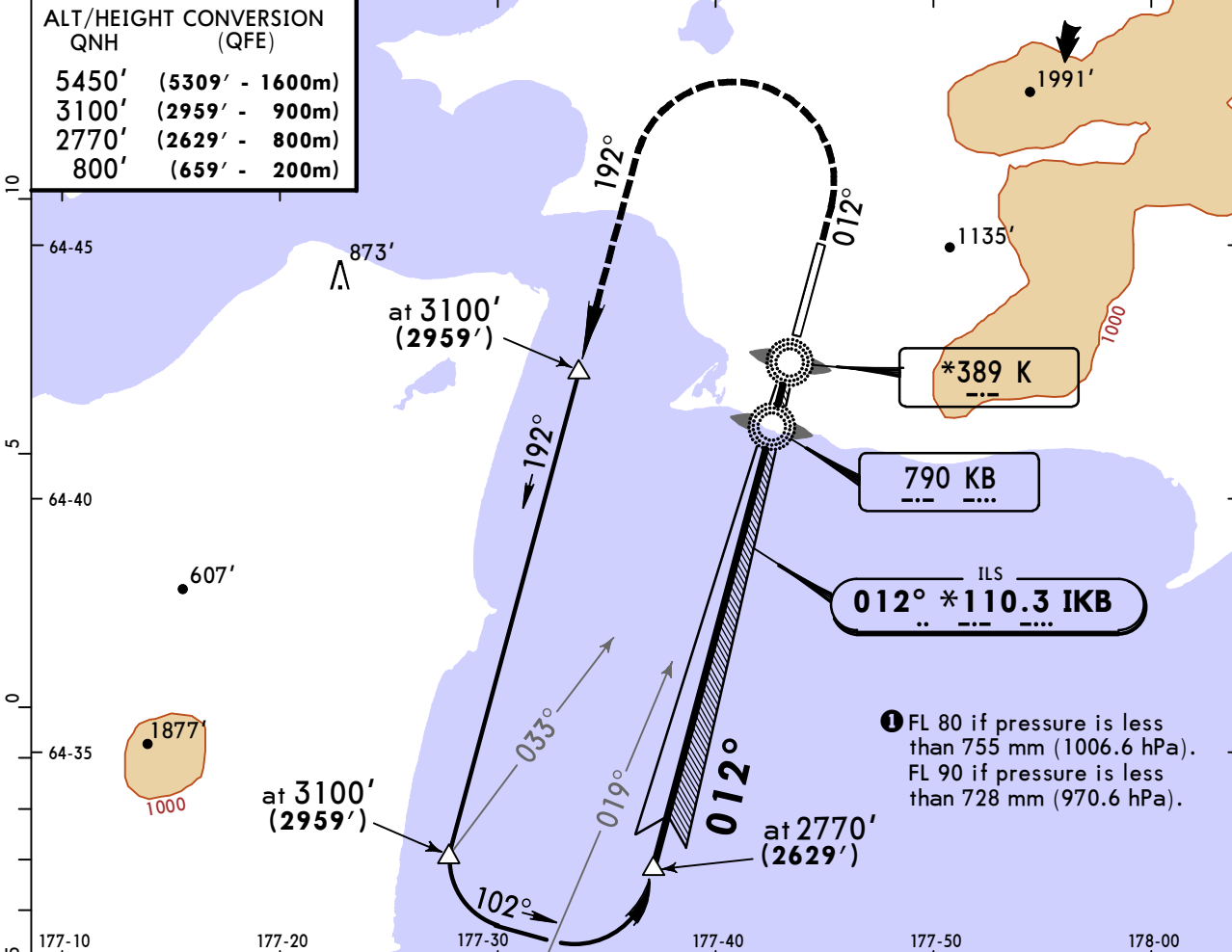
**ANADYR, RUSSIA**  
**ILS Rwy 01**


*ATIS <b>126.2</b> <b>125.4</b>		*ANADYR Approach <b>120.0</b>		*ANADYR Start (TWR) <b>124.0</b>	
LOC IKB <b>*110.3</b>	Final Apch Crs <b>012°</b>	GS LOM <b>797'(656')</b>	ILS DA(H) Refer to Minimums	Apt Elev 194' Rwy 141'	
<b>MISSED APCH: Climb on 012° to 800' (659') , then turn LEFT onto 192° climbing to 3100' (2959') , then according to chart.</b>					 MSA ARP

Alt Set: MM (hPa on req)    QNH on req (**QFE**)    Trans level: FL 70 **①**    Trans alt: 5450' (**5309'**)  
Heavy turbulence with downdrafts may be expected on final.

**ALT/HEIGHT CONVERSION**  
QNH (QFE)

5450'	(5309' - 1600m)
3100'	(2959' - 900m)
2770'	(2629' - 800m)
800'	(659' - 200m)



Gnd speed-Kts	70	90	100	120	140	160	HIALS-II 	800' (659') on 012°	192° LT	3100' (2959')
GS	3.00°	372	478	531	637	743				

ILS STRAIGHT-IN LANDING RWY 01 DA(H) A: 358'(217') C: 377'(236') B: 367'(226') D: 387'(246')			LOC (GS out)		
FULL		TDZ or CL out	ALS out		
A					
B					
C	RVR 550m VIS 800m	RVR 720m VIS 800m	1200m	NOT AUTHORIZED	
D					

**PANS OPS**

**UHMA/DYR**  
UGOLNY

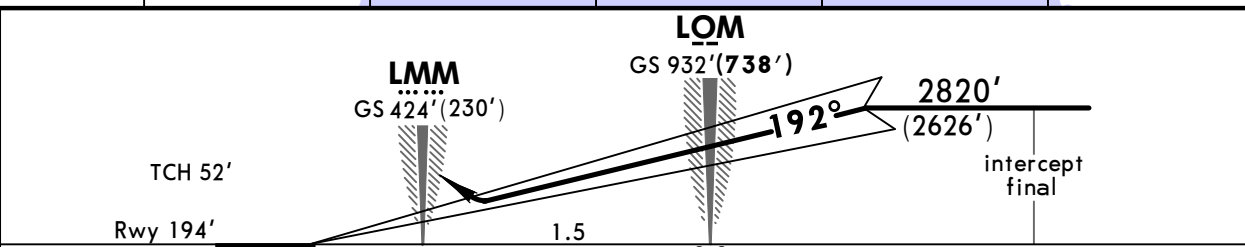
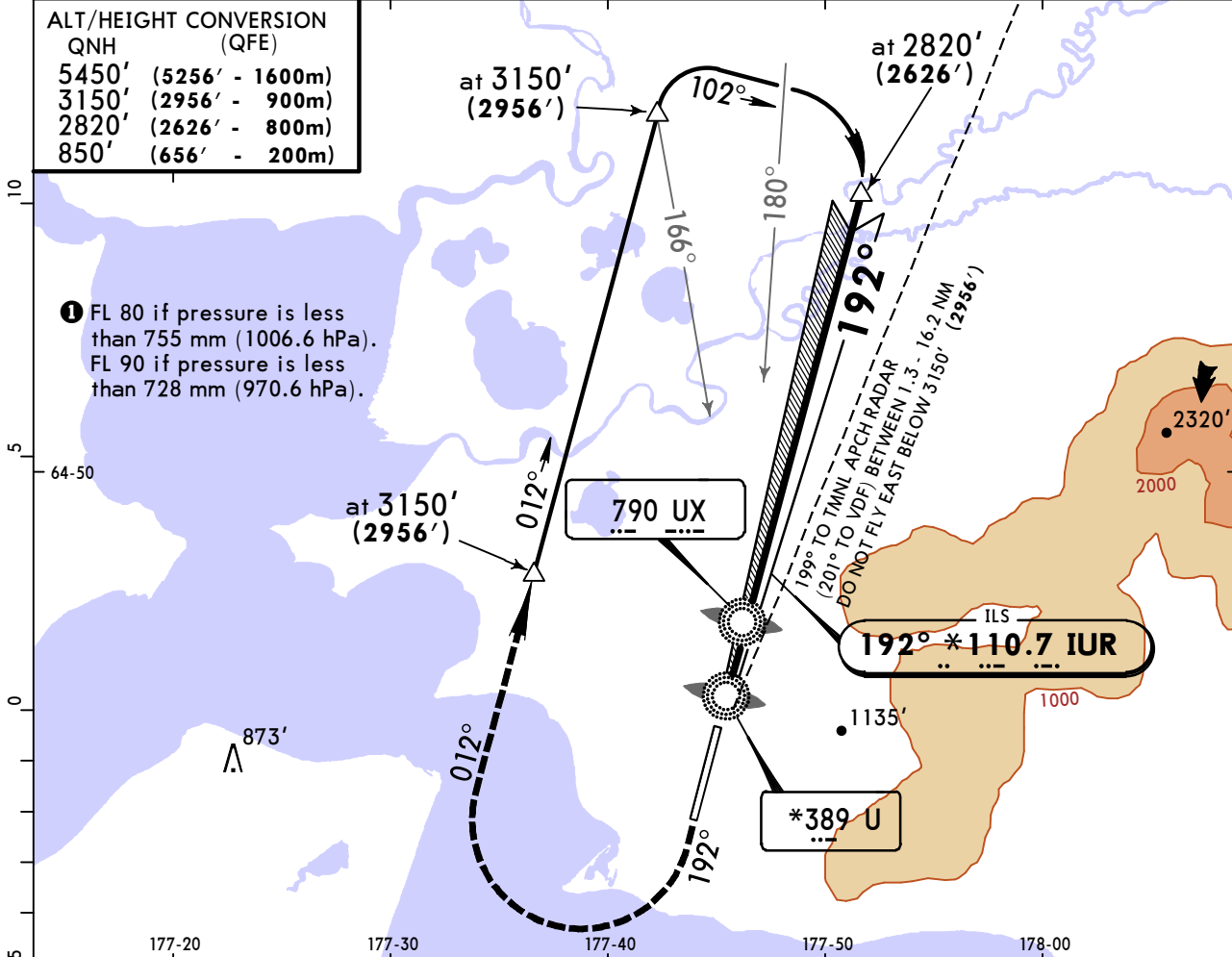
**JEPPESSEN**  
15 SEP 17 **(11-2)**

**ANADYR, RUSSIA**  
ILS Rwy 19

BRIEFING STRIP™	*ATIS		*ANADYR Approach		*ANADYR Start (TWR)		<p>MSA ARP</p>
	126.2	125.4	120.0		124.0		
	LOC IUR <b>*110.7</b>	Final Apch Crs <b>192°</b>	GS LOM <b>932'(738')</b>	ILS DA(H) Refer to Minimums	Apt Elev 194' Rwy 194'		
<b>MISSED APCH: Climb on 192° to 850' (656'), then turn RIGHT onto 012° climbing to 3150' (2956') , then according to chart.</b>							

Alt Set: MM (hPa on req)    QNH on req (**QFE**)    Trans level: FL 70 **1**    Trans alt: 5450' (**5256'**)  
 Heavy turbulence with downdrafts may be expected on final.

ALT/HEIGHT CONVERSION	
QNH	(QFE)
5450'	(5256' - 1600m)
3150'	(2956' - 900m)
2820'	(2626' - 800m)
850'	(656' - 200m)



Gnd speed-Kts	70	90	100	120	140	160	HIALS PAPI	850' (656')	on 192°	012° RT	3150' (2956')
GS	3.00°	372	478	531	637	849					

ILS STRAIGHT-IN LANDING RWY 19 ABC: 394'(200') DA(H) D: 404'(210')		LOC (GS out)	
		FULL	ALS out
A	RVR 720m VIS 800m	1200m	NOT AUTHORIZED
B			
C			
D			

PANS OPS



UHMA/DYR  
UGOLNY

**JEPPESSEN**  
15 SEP 17 **(16-1)**

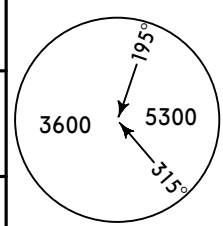
**ANADYR, RUSSIA**  
**2 NDB Rwy 01**

*ATIS <b>126.2</b>		*ANADYR Approach <b>120.0</b>		*ANADYR Start (TWR) <b>124.0</b>	
NDB KB <b>790</b>	Final Apch Crs <b>012°</b>	Minimum Alt LOM <b>800'(659')</b>	MDA(H) Refer to Minimums	Apt Elev 194'	Rwy 141'

**BRIEFING STRIP™**

**MISSED APCH:** Climb on 012° to 800' (659') , then turn LEFT onto 192° climbing to 3100' (2959') , then according to chart.

MSA ARP



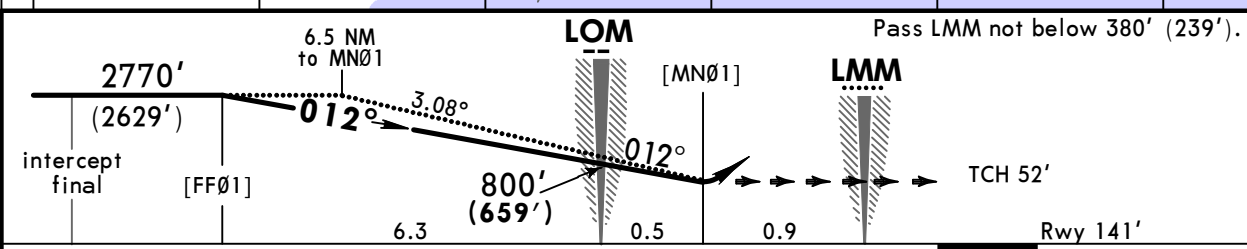
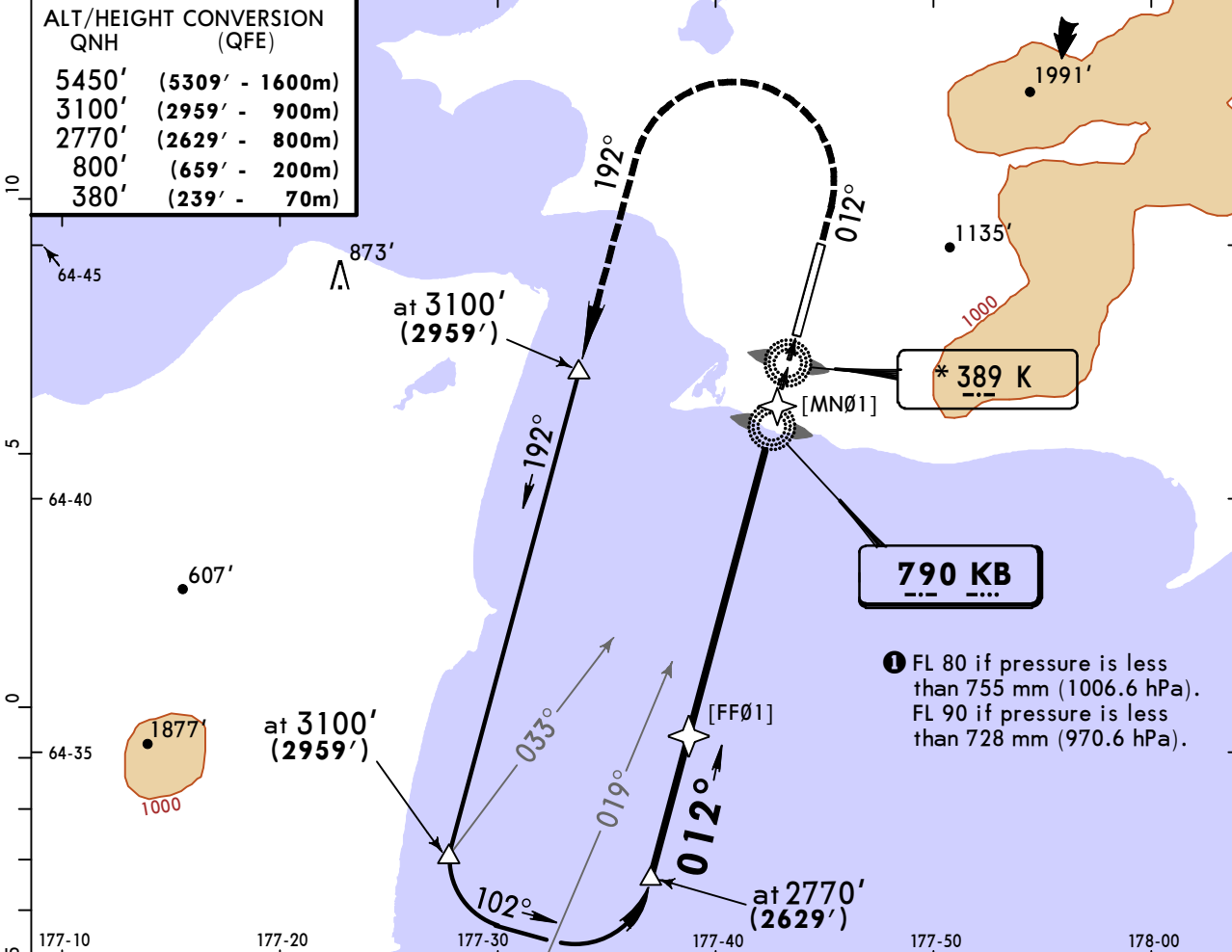
Alt Set: MM (hPa on req) QNH on req (QFE) Trans level: FL 70 **1** Trans alt: 5450' (5309')

Heavy turbulence with downdrafts may be expected on final.

**ALT/HEIGHT CONVERSION**

QNH (QFE)

5450'	(5309' - 1600m)
3100'	(2959' - 900m)
2770'	(2629' - 800m)
800'	(659' - 200m)
380'	(239' - 70m)



Gnd speed-Kts	70	90	100	120	140	160	HIALS-II	800' (659')	on 012°	192°	3100' (2959')
Descent angle	3.08°	381	490	545	654	763	PAPI			LT	

<b>2 NDB</b>		<b>STRAIGHT-IN LANDING RWY 01</b>		<b>K Lctr</b>	
MDA(H) <b>650'(509')</b>		MDA(H) <b>1240'(1099')</b>		MDA(H) <b>1200'(1059')</b>	
ALS out		ALS out		ALS out	
A		3200m		3200m	
B	2100m				
C	2900m	4000m	4800m	4000m	4800m
D	2500m	4400m		4400m	

**PANS OPS**

**UHMA/DYR**  
UGOLNY

**JEPPESSEN**  
15 SEP 17 **(16-2)**

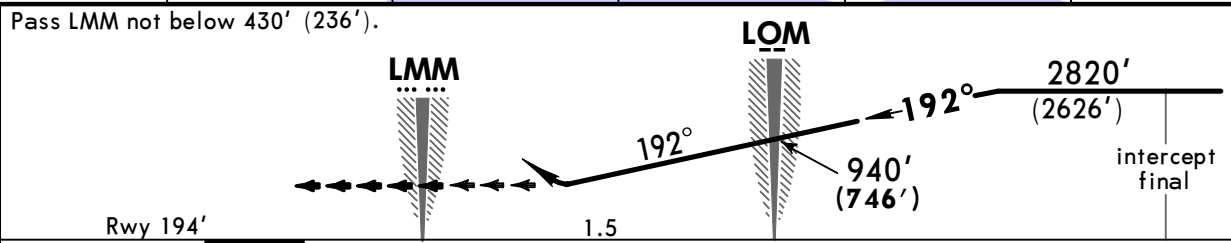
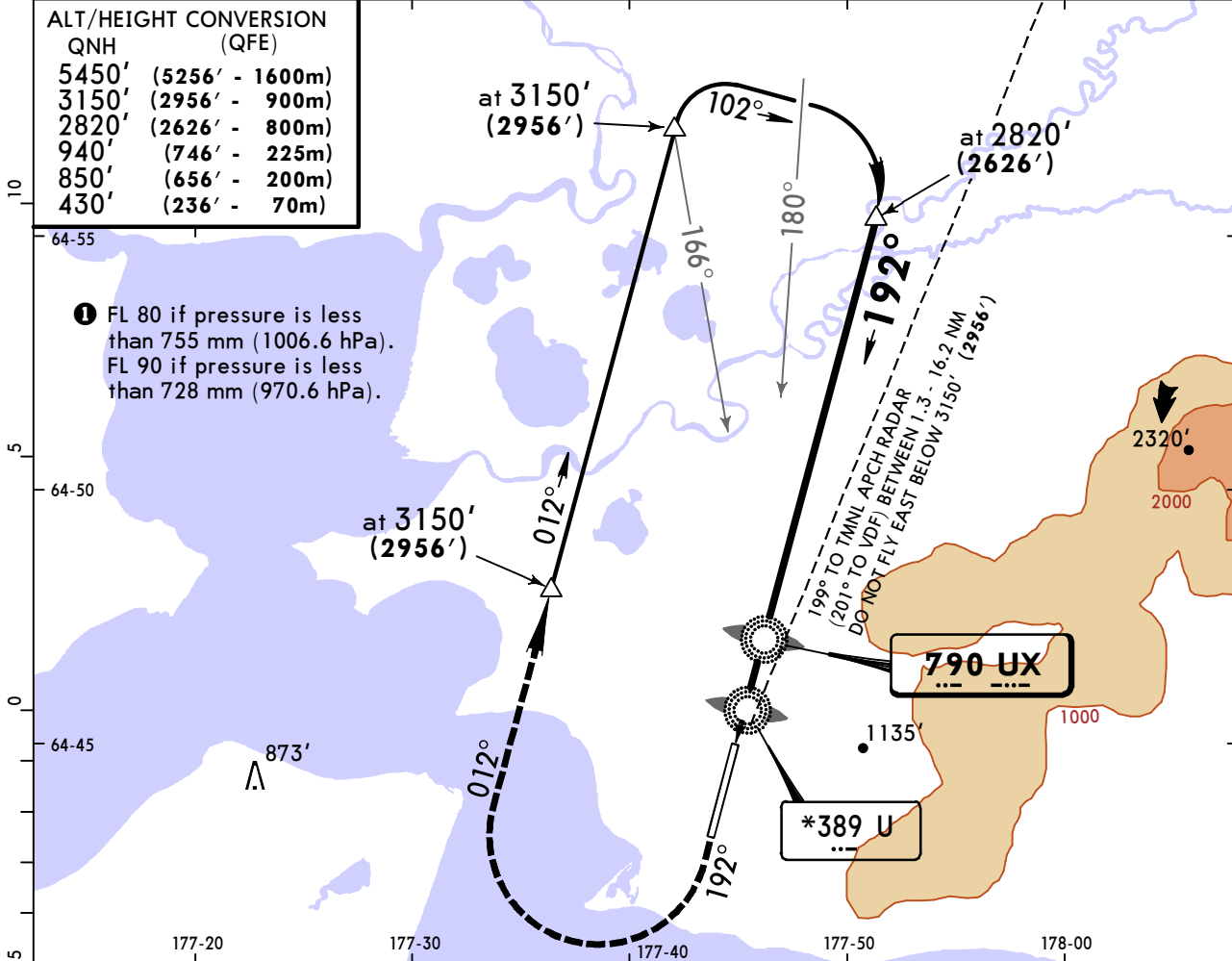
**ANADYR, RUSSIA**  
**2 NDB Rwy 19**

BRIEFING STRIP™	*ATIS		*ANADYR Approach		*ANADYR Start (TWR)		<p>MSA ARP</p>
	126.2	125.4	120.0		124.0		
	NDB UX <b>790</b>	Final Apch Crs <b>192°</b>	Minimum Alt <b>LOM</b> 940'(746')	MDA(H) Refer to Minimums	Apt Elev 194' Rwy 194'		
<b>MISSED APCH: Climb on 192° to 850'(656'), then turn RIGHT onto 012° climbing to 3150'(2956'), then according to chart.</b>							

Alt Set: MM (hPa on req)    QNH on req (**QFE**)    Trans level: FL 70 **1**    Trans alt: 5450'(5256')

Heavy turbulence with downdrafts may be expected on final.

ALT/HEIGHT CONVERSION	
QNH	(QFE)
5450'	(5256' - 1600m)
3150'	(2956' - 900m)
2820'	(2626' - 800m)
940'	(746' - 225m)
850'	(656' - 200m)
430'	(236' - 70m)



Gnd speed-Kts	70	90	100	120	140	160	HIALS	850' (656')	on 192°	012°	3150' (2956')
Descent angle	3.00°	372	478	531	637	849	PAPI			RT	

STRAIGHT-IN LANDING RWY 19							
with Radar		w/o Radar		with Radar		w/o Radar	
MDA(H) <b>500'(306')</b>		MDA(H) <b>1020'(826')</b>		MDA(H) <b>890'(696')</b>		MDA(H) <b>1070'(876')</b>	
ALS out		ALS out		ALS out		ALS out	
A		3200m		3200m		3200m	
B	1200m	3200m		3200m		3200m	
C	RVR 1500m VIS 1600m	3200m	4000m	3200m	4000m	3200m	4000m
D	RVR 1500m VIS 1600m	4000m	4400m	3200m	3600m	4000m	4400m

PANS OPS

## Chart changes since cycle 08-2019

ADD = added chart, REV = revised chart, DEL = deleted chart.

ACT	PROCEDURE IDENT	INDEX	REV DATE	EFF DATE
<b>ANADYR, (UGOLNY - UHMA)</b>				

## TERMINAL CHART CHANGE NOTICES

No Chart Change Notices for Airport UHMA