

List of pages in this Trip Kit

Trip Kit Index
Airport Information For UERR
Terminal Charts For UERR
Revision Letter For Cycle 09-2019
Change Notices
Notebook

General Information

Location: MIRNY RUS
ICAO/IATA: UERR / MJZ
Lat/Long: N62° 32.1', E114° 02.3'
Elevation: 1161 ft

Airport Use: Public
Daylight Savings: Not Observed
UTC Conversion: -9:00 = UTC
Magnetic Variation: 11.0° W

Fuel Types: Jet A-1
Repair Types: Minor Engine
Customs: No
Airport Type: IFR
Landing Fee: Yes
Control Tower: Yes
Jet Start Unit: No
LLWS Alert: No
Beacon: No

Sunrise: 1942 Z
Sunset: 1259 Z

Runway Information

Runway: 07
Length x Width: 9186 ft x 148 ft
Surface Type: concrete
TDZ-Elev: 1122 ft
Lighting: Edge, ALS

Runway: 25
Length x Width: 9186 ft x 148 ft
Surface Type: concrete
TDZ-Elev: 1162 ft
Lighting: Edge, ALS

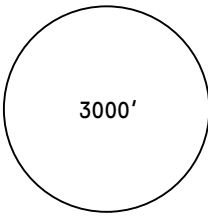
Communication Information

ATIS: 126.600
Mirny Vyshka Tower: 125.900 Non-English
Mirny Vyshka Tower: 124.000 Secondary Non-English
Mirny Vyshka Tower: 129.000 Secondary Non-English
Mirny Start Tower: 134.100 Non-English
Mirny Transit Operations: 131.700 Non-English

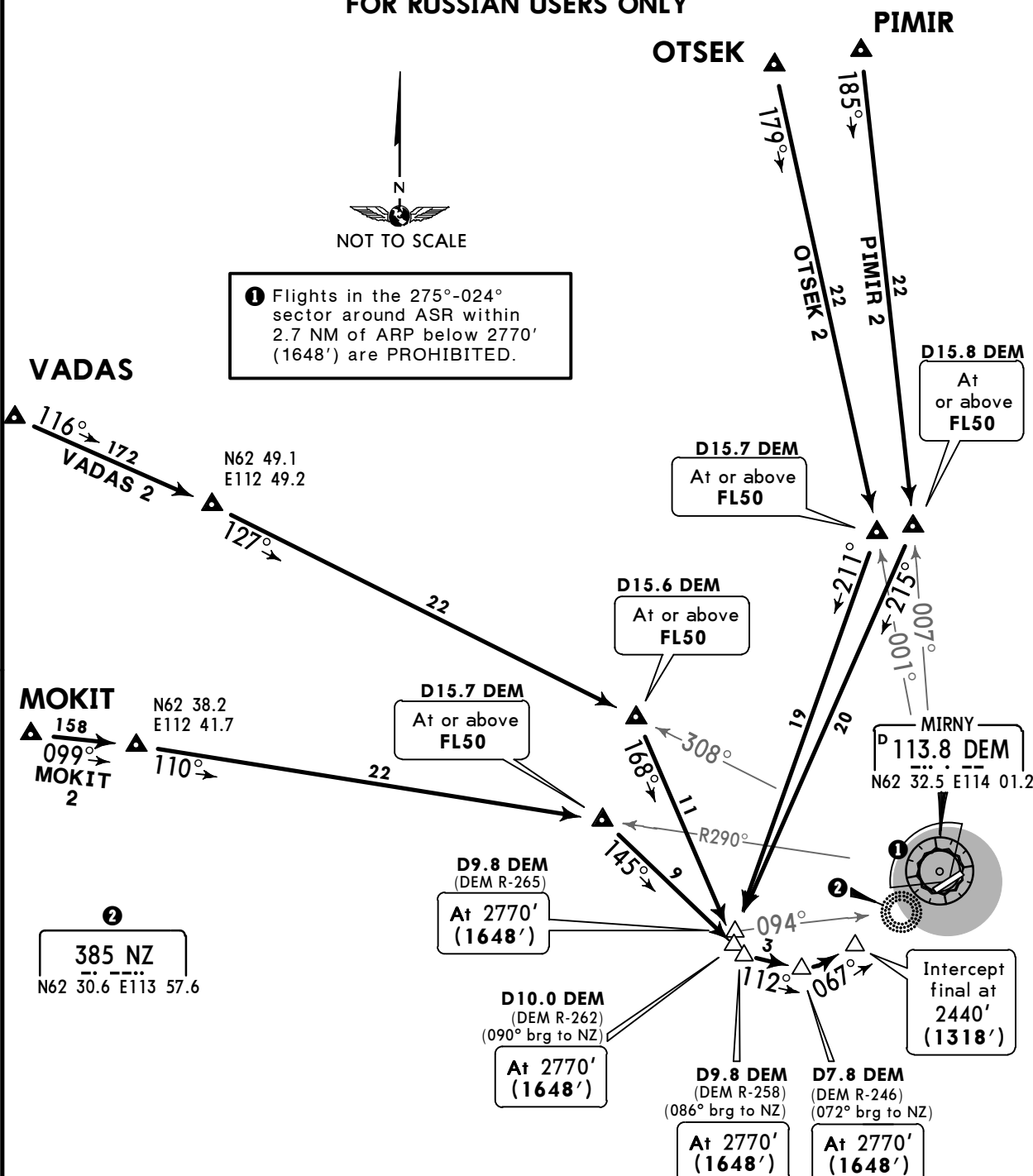
UERR/MJZ
MIRNY

JEPPESSEN
7 SEP 18 **10-2** Eff 13 Sep

MIRNY, RUSSIA
STAR

ATIS 126.6	Alt Set: MM (hPa on request) QNH on req (QFE) Trans level: FL50 FL60 if pressure is less than 728 mm (970.6 hPa) FL70 if pressure is less than 701 mm (934.6 hPa) Trans alt: 3130' (2008') Straight in approach shall be carried out only under continuous RADAR control and receiving VORDME signals.	 3000' MSA ARP
Apt Elev 1161'		

**MOKIT 2, OTSEK 2
PIMIR 2, VADAS 2
RWY 07 ARRIVALS**
FOR RUSSIAN USERS ONLY

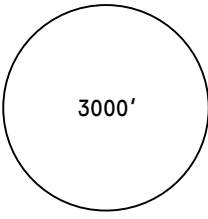


ALT/HEIGHT CONVERSION	
QNH	(QFE)
3130'	(2008' - 600m)
2770'	(1648' - 500m)
2440'	(1318' - 400m)

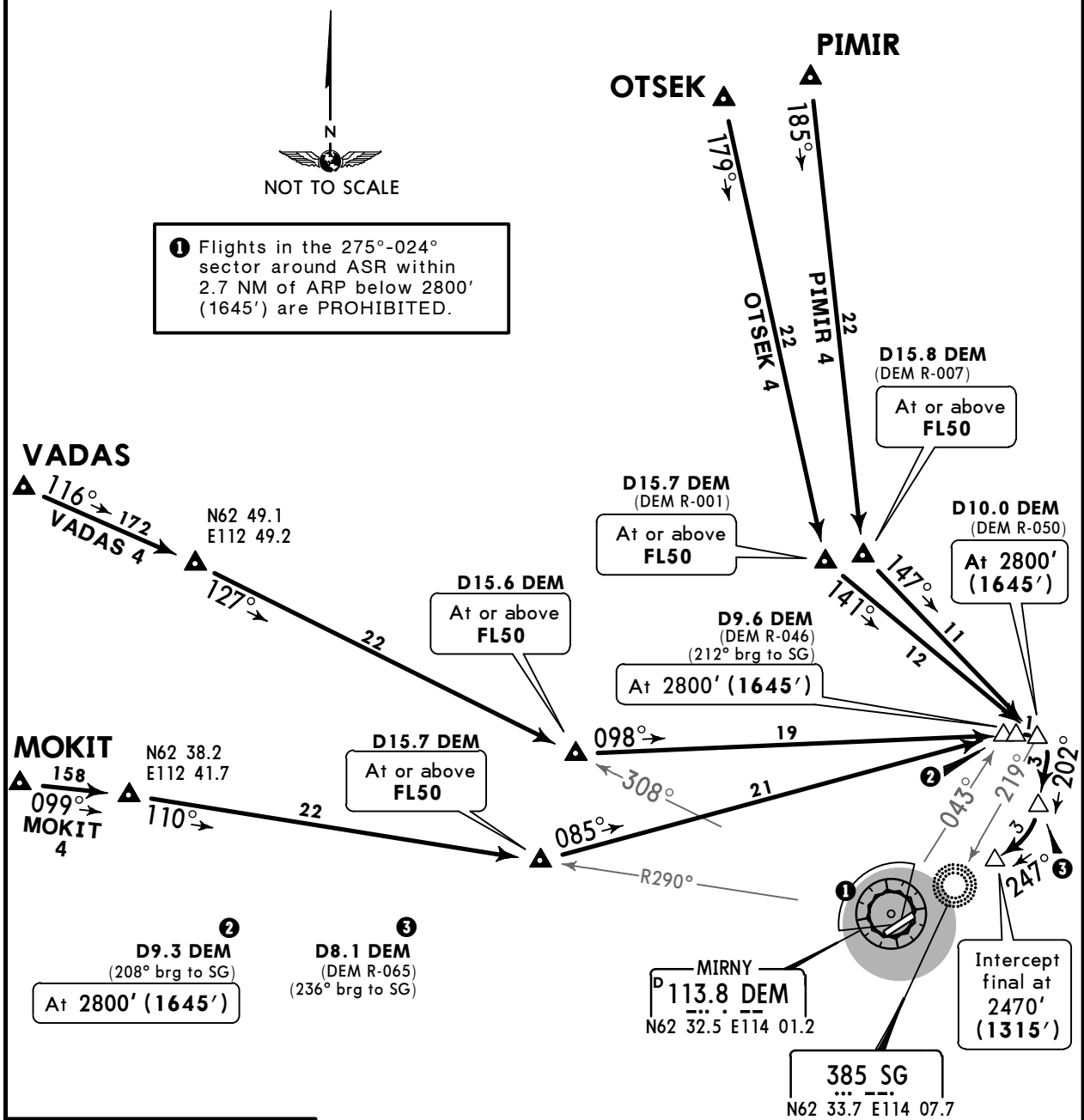
UERR/MJZ
MIRNY

JEPPESSEN
7 SEP 18 **(10-2A)** Eff 13 Sep

MIRNY, RUSSIA
STAR

ATIS 126.6	Alt Set: MM (hPa on request) QNH on req (QFE) Trans level: FL50 FL60 if pressure is less than 728 mm (970.6 hPa) FL70 if pressure is less than 701 mm (934.6 hPa) Trans alt: 3130' (1975')	 3000' MSA ARP
Apt Elev 1161'	Straight in approach shall be carried out only under continuous RADAR control and receiving VORDME signals.	

**MOKIT 4, OTSEK 4
PIMIR 4, VADAS 4
RWY 25 ARRIVALS
FOR RUSSIAN USERS ONLY**



ALT/HEIGHT CONVERSION	
QNH	(QFE)
3130'	(1975' - 600m)
2800'	(1645' - 500m)
2470'	(1315' - 400m)

UERR/MJZ
MIRNY

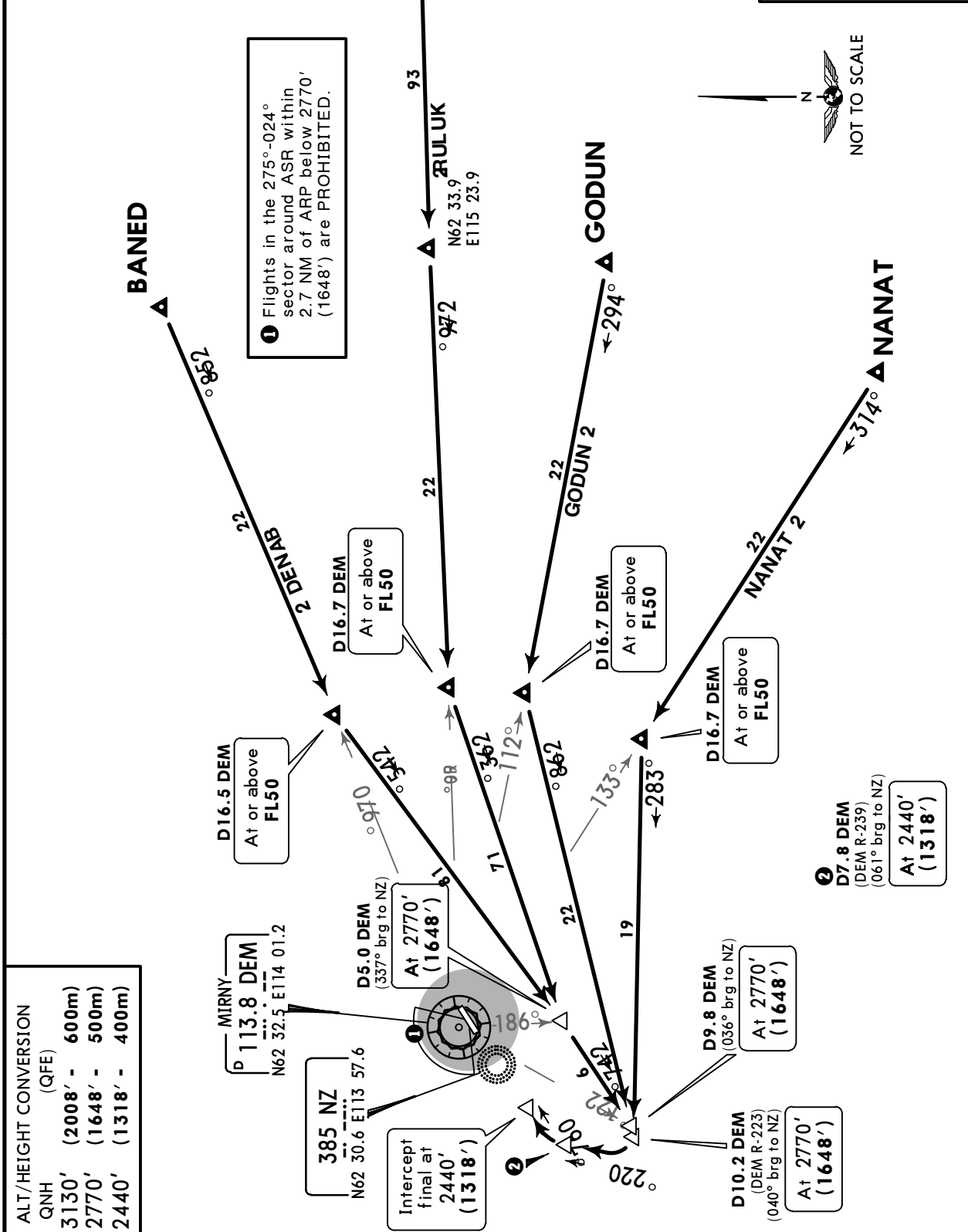
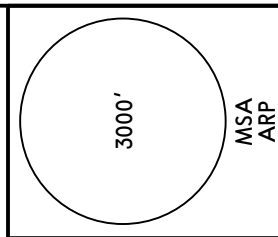
JEPPESSEN
7 SEP 18 10-2B Eff 13 Sep

MIRNY, RUSSIA

STAR

ATIS 126.6	Alt Set: MM (hPa on request) QNH on req (QFE) Trans level: FL50 FL60 if pressure is less than 728 mm (970.6 hPa) FL70 if pressure is less than 701 mm (934.6 hPa)
Apt Elev 1161'	Trans alt: 3130' (2008') Straight in approach shall be carried out only under continuous RADAR control and receiving VORDME signals.

**BANED 2, GODUN 2
KULUR 2, NANAT 2
RWY 07 ARRIVALS
FOR RUSSIAN USERS ONLY**



ALT/HEIGHT CONVERSION

QNH	(QFE)
3130'	(2008' - 600m)
2770'	(1648' - 500m)
2440'	(1318' - 400m)

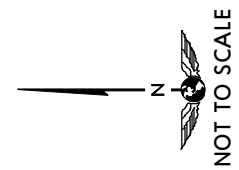
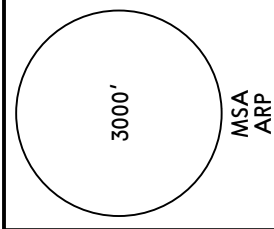
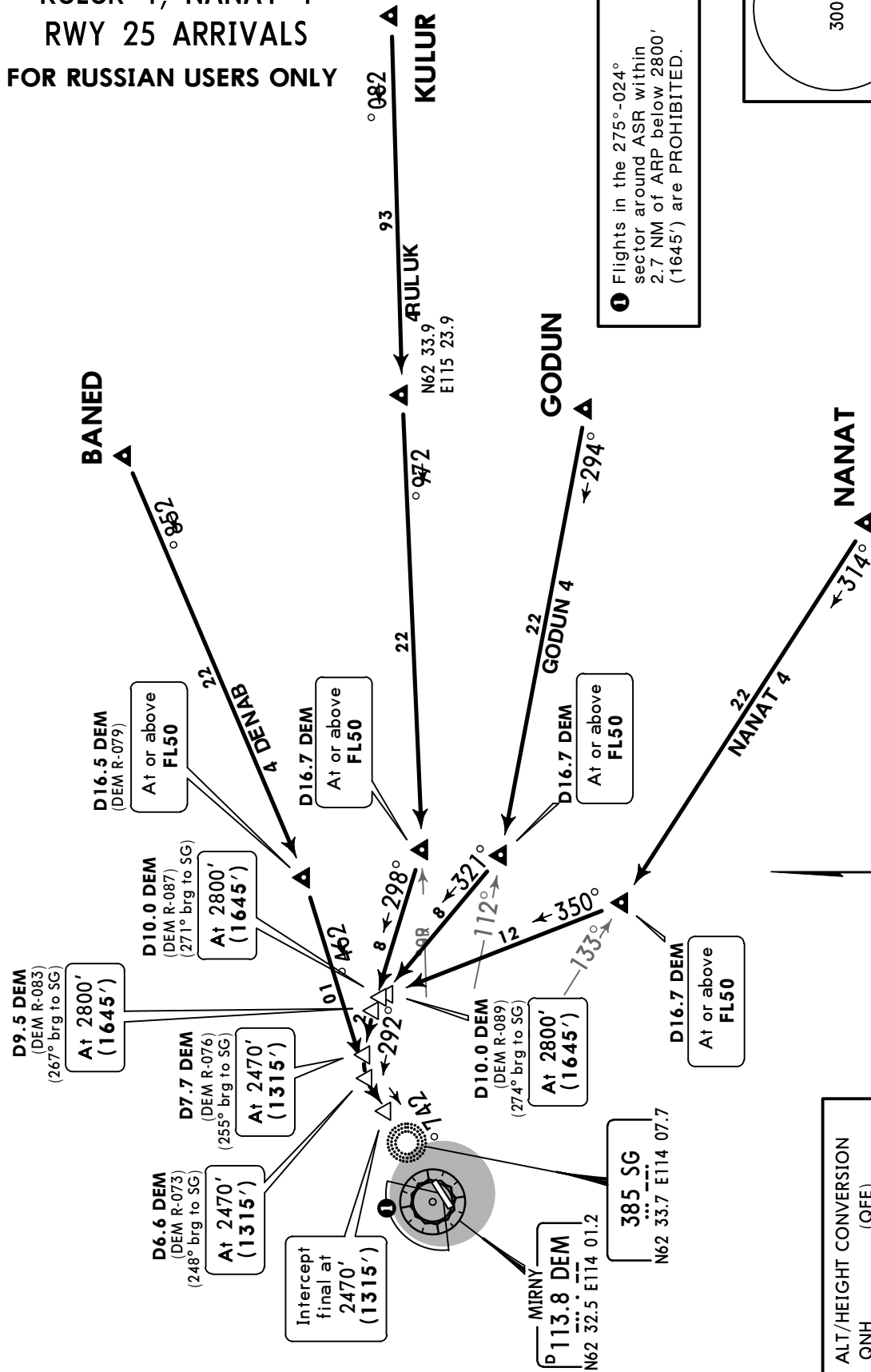
UERR/MJZ
MIRNY

JEPPESSEN
7 SEP 18 **10-2C** Eff 13 Sep

MIRNY, RUSSIA
STAR

ATIS 126.6	Alt Set: MM (hPa on request) QNH on req (QFE) Trans level: FL50 FL60 if pressure is less than 728 mm (970.6 hPa) FL70 if pressure is less than 701 mm (934.6 hPa)
Apt Elev 1161'	Trans alt: 3130' (1975') Straight in approach shall be carried out only under continuous RADAR control and receiving VORDME signals.

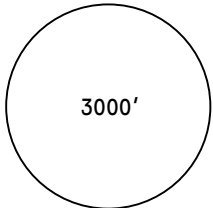
BANED 4, GODUN 4
KULUR 4, NANAT 4
RWY 25 ARRIVALS
FOR RUSSIAN USERS ONLY



UERR/MJZ
MIRNY

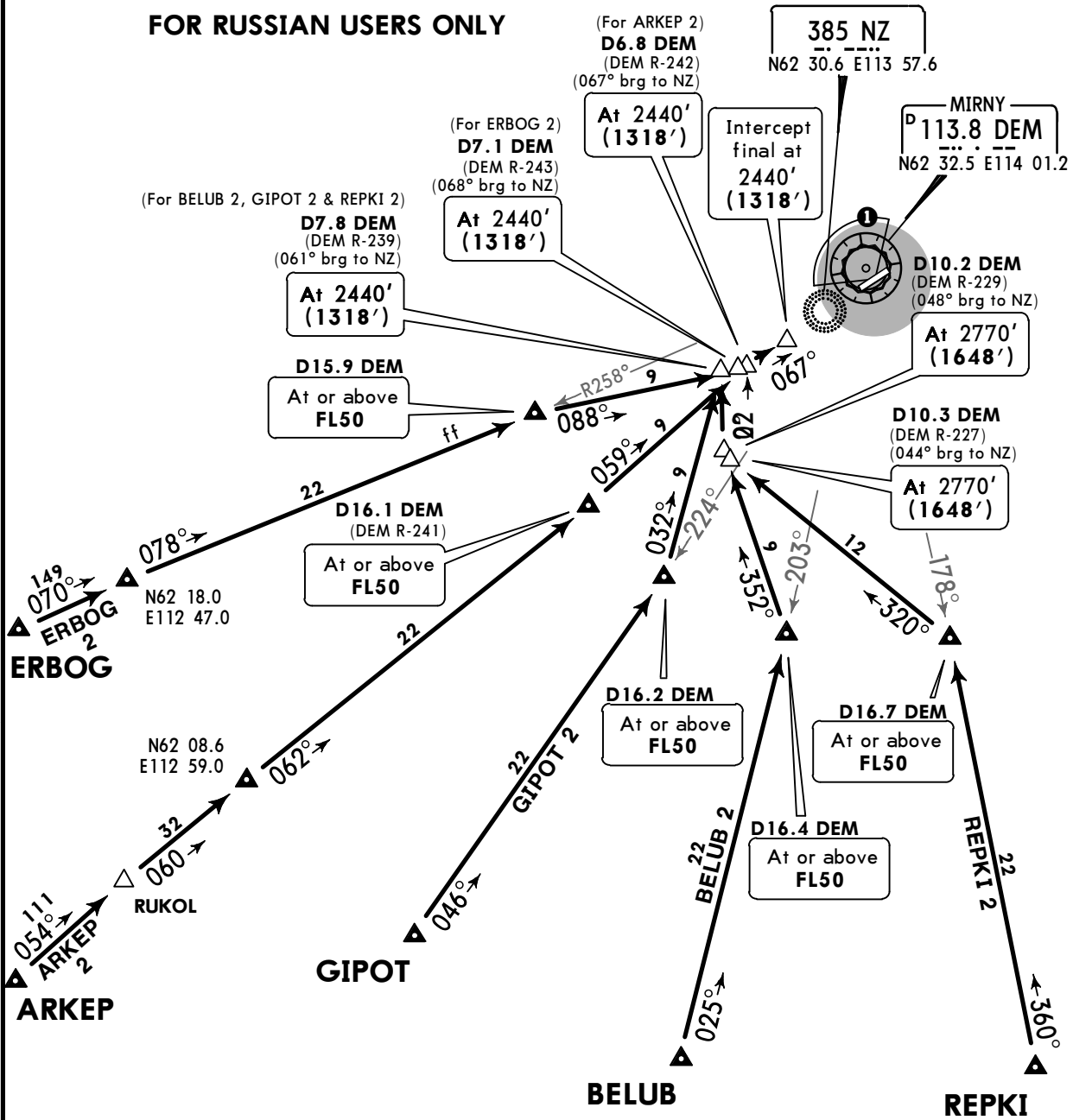
JEPPESSEN
7 SEP 18 **10-2D** Eff 13 Sep

MIRNY, RUSSIA
STAR

ATIS 126.6	Alt Set: MM (hPa on request) QNH on req (QFE) Trans level: FL50 FL60 if pressure is less than 728 mm (970.6 hPa) FL70 if pressure is less than 701 mm (934.6 hPa) Trans alt: 3130' (2008') Straight in approach shall be carried out only under continuous RADAR control and receiving VORDME signals.	 3000' MSA ARP
Apt Elev 1161'		

**ARKEP 2, BELUB 2, ERBOG 2
GIPOT 2, REPKI 2
RWY 07 ARRIVALS**
FOR RUSSIAN USERS ONLY

1 Flights in the 275°-024° sector around ASR within 2.7 NM of ARP below 2770' (1648') are PROHIBITED.

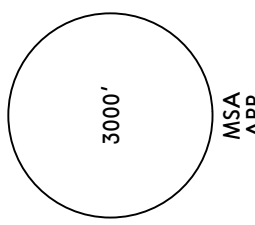


ALT/HEIGHT CONVERSION	
QNH	(QFE)
3130'	(2008' - 600m)
2770'	(1648' - 500m)
2440'	(1318' - 400m)

UERR/MJZ
MIRNY

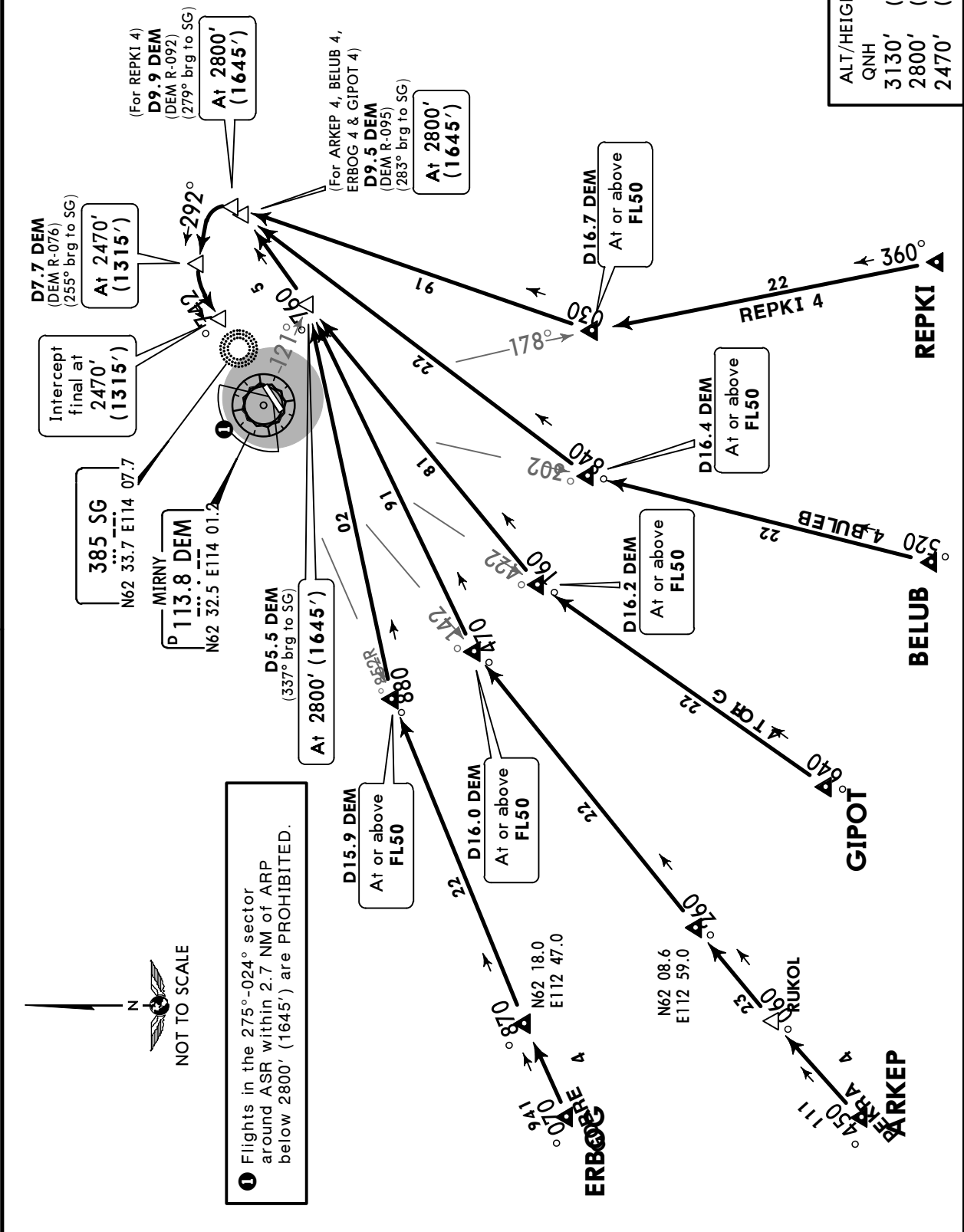
JEPPESSEN
7 SEP 18 **10-2E** Eff 13 Sep

MIRNY, RUSSIA
STAR

ATIS 126.6	Alt Set: MM (hPa on request) QNH on req (QFE) Trans level: FL50 FL60 if pressure is less than 728 mm (970.6 hPa) FL70 if pressure is less than 701 mm (934.6 hPa) Trans alt: 3130' (1975') Straight in approach shall be carried out only under continuous RADAR control and receiving VORDME signals.	 <p>3000' MSA ARP</p>
Apt Elev 1161'		

**ARKEP 4, BELUB 4, ERBOG 4
GIPOT 4, REPKI 4
RWY 25 ARRIVALS
FOR RUSSIAN USERS ONLY**

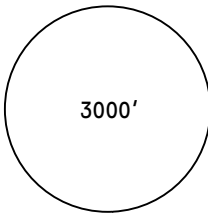
ALT/HEIGHT CONVERSION	
QNH	(QFE)
3130'	(1975' - 600m)
2800'	(1645' - 500m)
2470'	(1315' - 400m)



UERR/MJZ
MIRNY

JEPPESSEN
30 NOV 18 **10-2F** Eff 6 Dec

MIRNY, RUSSIA
STAR

ATIS 126.6	Alt Set: MM (hPa on request) QNH on req (QFE) Trans level: FL50 FL60 if pressure is less than 728 mm (970.6 hPa) FL70 if pressure is less than 701 mm (934.6 hPa) Trans alt: 3130' (2008')	 3000' MSA ARP
Apt Elev 1161'	Straight in approach allowed under VFR day and night. Straight in approach allowed under IFR for ACFT with VORDME equipment onboard.	

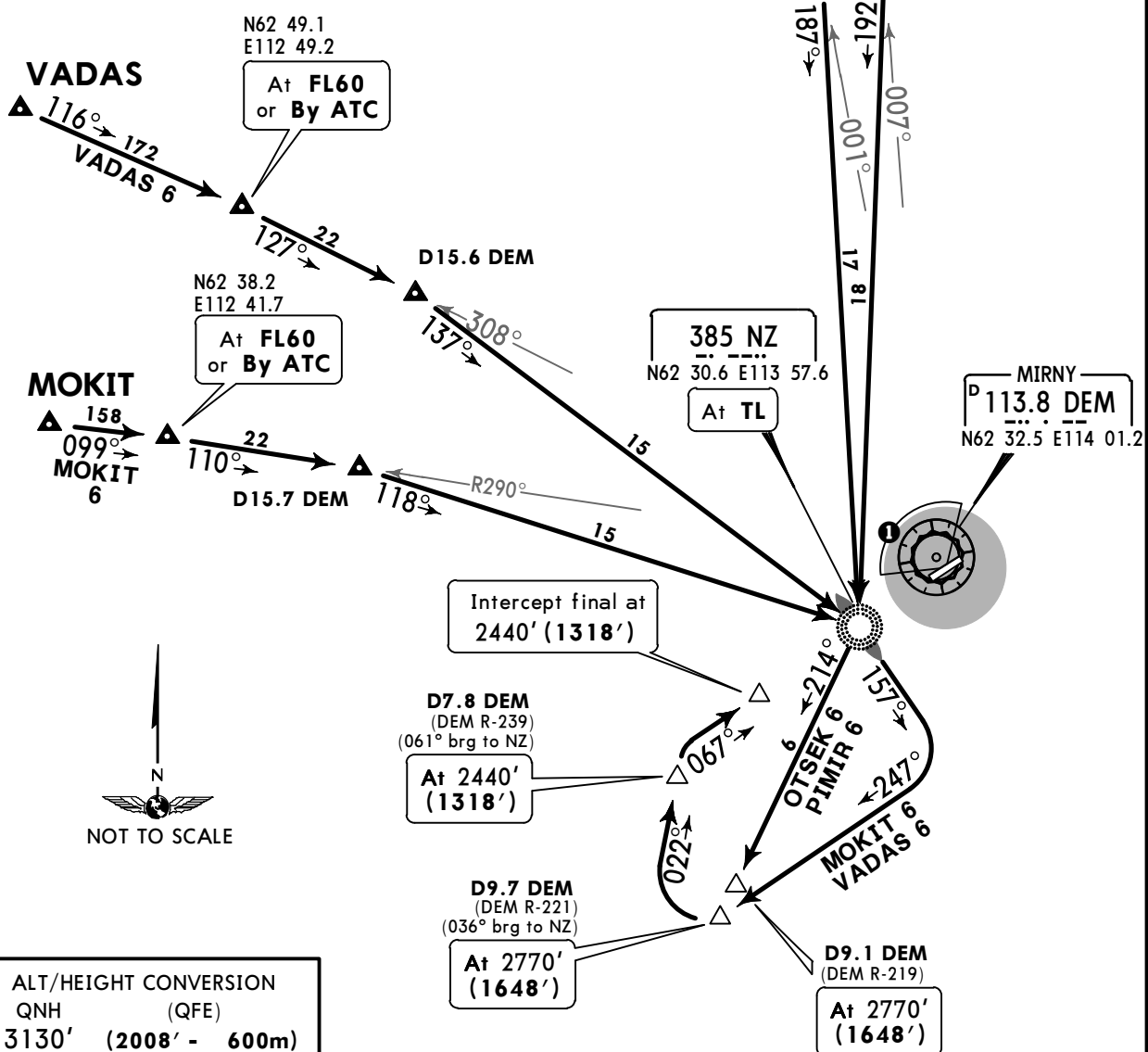
**MOKIT 6, OTSEK 6
PIMIR 6, VADAS 6
RWY 07 ARRIVALS**

**WITHOUT RADAR CONTROL
DME REQUIRED**

PIMIR
At FL60
or By ATC

OTSEK
At FL60
or By ATC

1 Flights in the 275°-024° sector around ASR within 2.7 NM of ARP below 2770' (1648') are PROHIBITED.

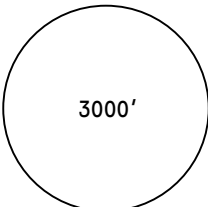


ALT/HEIGHT CONVERSION	
QNH	(QFE)
3130'	(2008' - 600m)
2770'	(1648' - 500m)
2440'	(1318' - 400m)

UERR/MJZ
MIRNY

JEPPESSEN
30 NOV 18 **10-2G** Eff 6 Dec

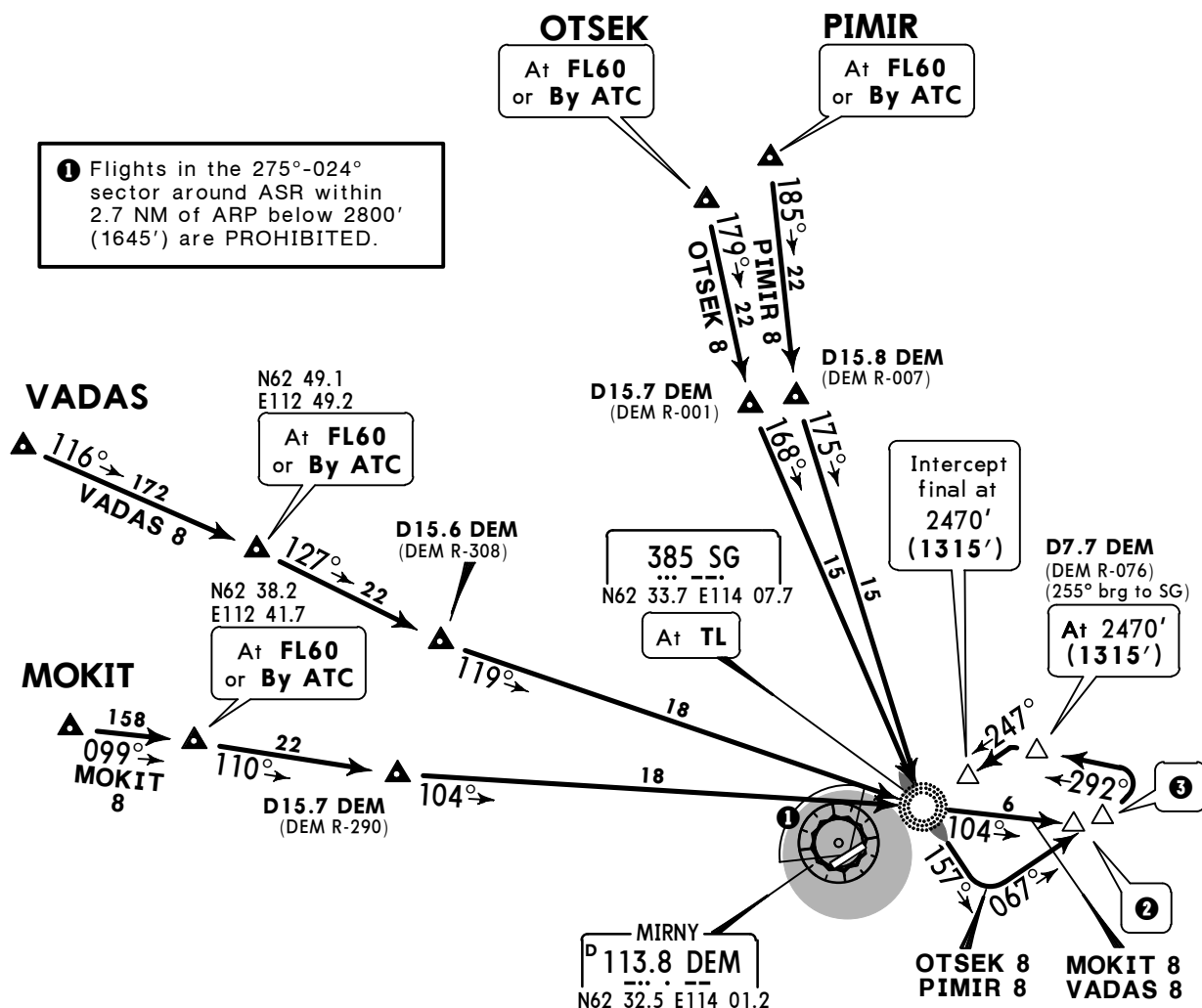
MIRNY, RUSSIA
STAR

<p>ATIS 126.6</p>	<p>Alt Set: MM (hPa on request) QNH on req (QFE) Trans level: FL50 FL60 if pressure is less than 728 mm (970.6 hPa) FL70 if pressure is less than 701 mm (934.6 hPa) Trans alt: 3130' (1975')</p>	 <p>3000'</p> <p>MSA ARP</p>
<p>Apt Elev 1161'</p>	<p>Straight in approach allowed under VFR day and night. Straight in approach allowed under IFR for ACFT with VORDME equipment onboard.</p>	

**MOKIT 8, OTSEK 8
PIMIR 8, VADAS 8
RWY 25 ARRIVALS
WITHOUT RADAR CONTROL
DME REQUIRED
FOR RUSSIAN USERS OR EMERGENCY ONLY**



1 Flights in the 275°-024° sector around ASR within 2.7 NM of ARP below 2800' (1645') are PROHIBITED.



ALT/HEIGHT CONVERSION	
QNH	(QFE)
3130'	(1975' - 600m)
2800'	(1645' - 500m)
2470'	(1315' - 400m)

CHANGES: Crossing at SG.

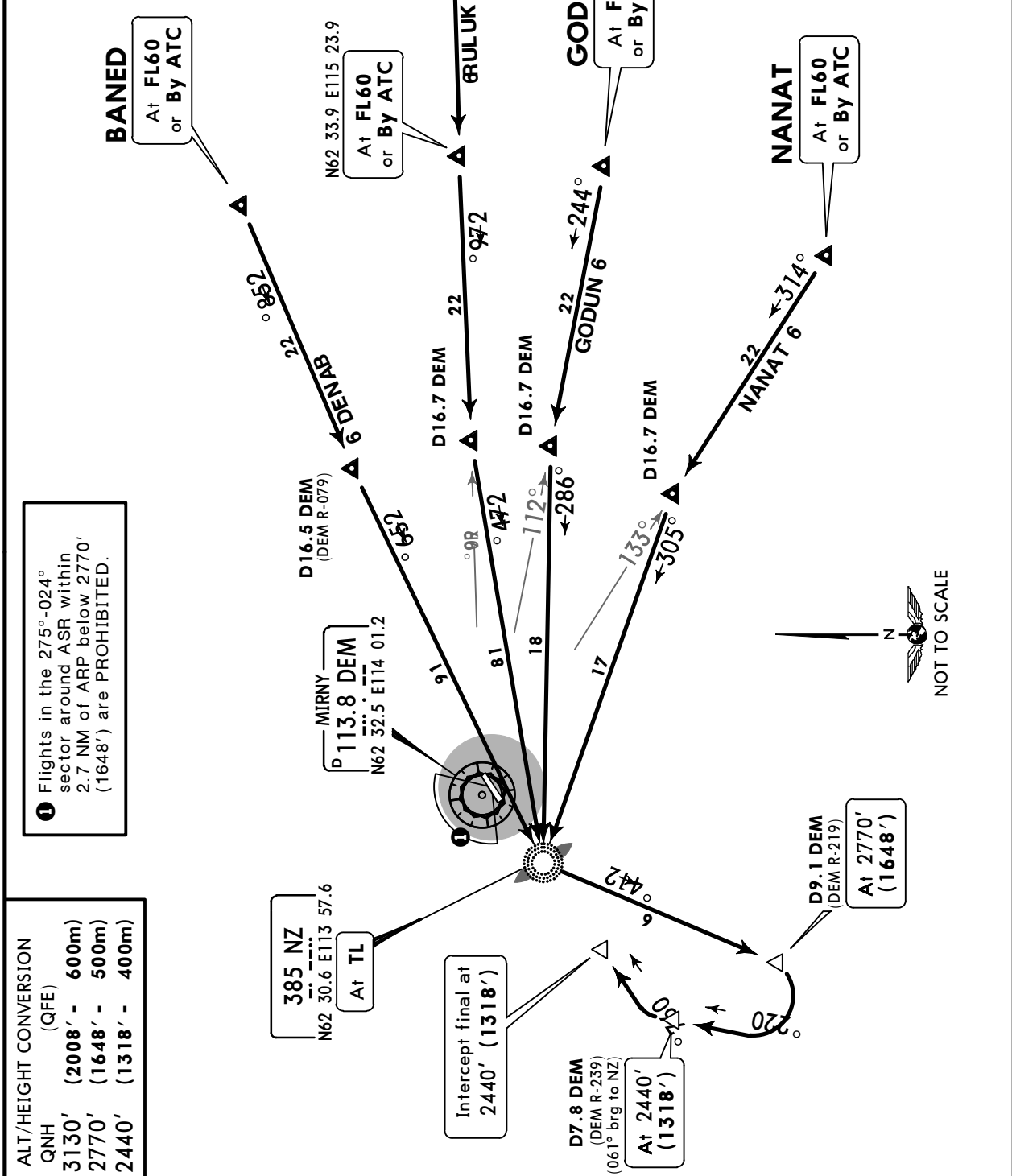
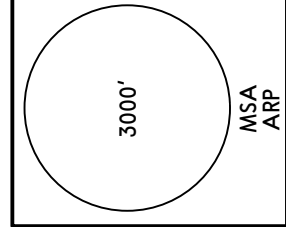
UERR/MJZ
MIRNY

JEPPESSEN
30 NOV 18 **10-2H** Eff 6 Dec

MIRNY, RUSSIA
STAR

ATIS 126.6	Alt Set: MM (hPa on request) QNH on req (QFE) Trans level: FL50 FL60 if pressure is less than 728 mm (970.6 hPa) FL70 if pressure is less than 701 mm (934.6 hPa)
Apt Elev 1161'	Trans alt: 3130' (2008') Straight in approach allowed under VFR day and night. Straight in approach allowed under IFR for ACFT with VORDME equipment onboard.

BANED 6, GODUN 6
KULUR 6, NANAT 6
RWY 07 ARRIVALS
WITHOUT RADAR CONTROL
DME REQUIRED
FOR RUSSIAN USERS OR
EMERGENCY ONLY



ALT/HEIGHT CONVERSION

QNH	(QFE)
3130' (2008' - 600m)	
2770' (1648' - 500m)	
2440' (1318' - 400m)	

CHANGES: Crossing at NZ.

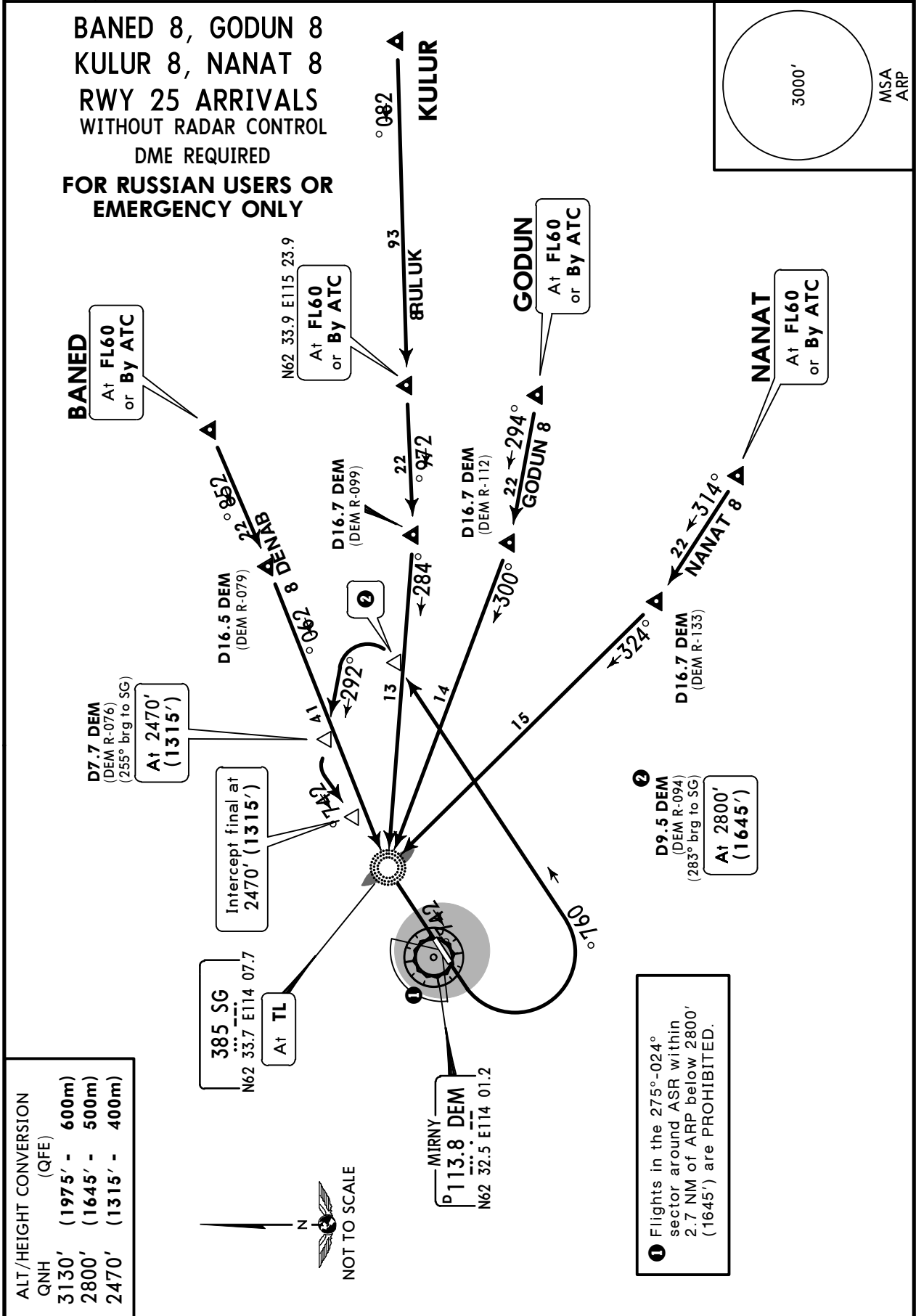
© JEPPESSEN, 2014, 2018. ALL RIGHTS RESERVED.

UERR/MJZ
MIRNY

JEPPESSEN
30 NOV 18 **10-2J** Eff 6 Dec

MIRNY, RUSSIA
STAR

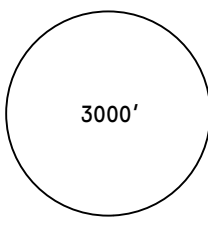
ATIS 126.6	Alt Set: MM (hPa on request) QNH on req (QFE) Trans level: FL50 FL60 if pressure is less than 728 mm (970.6 hPa) FL70 if pressure is less than 701 mm (934.6 hPa)
Apt Elev 1161'	Trans alt: 3130' (1975') Straight in approach allowed under VFR day and night. Straight in approach allowed under IFR for ACFT with VORDME equipment onboard.



UERR/MJZ
MIRNY

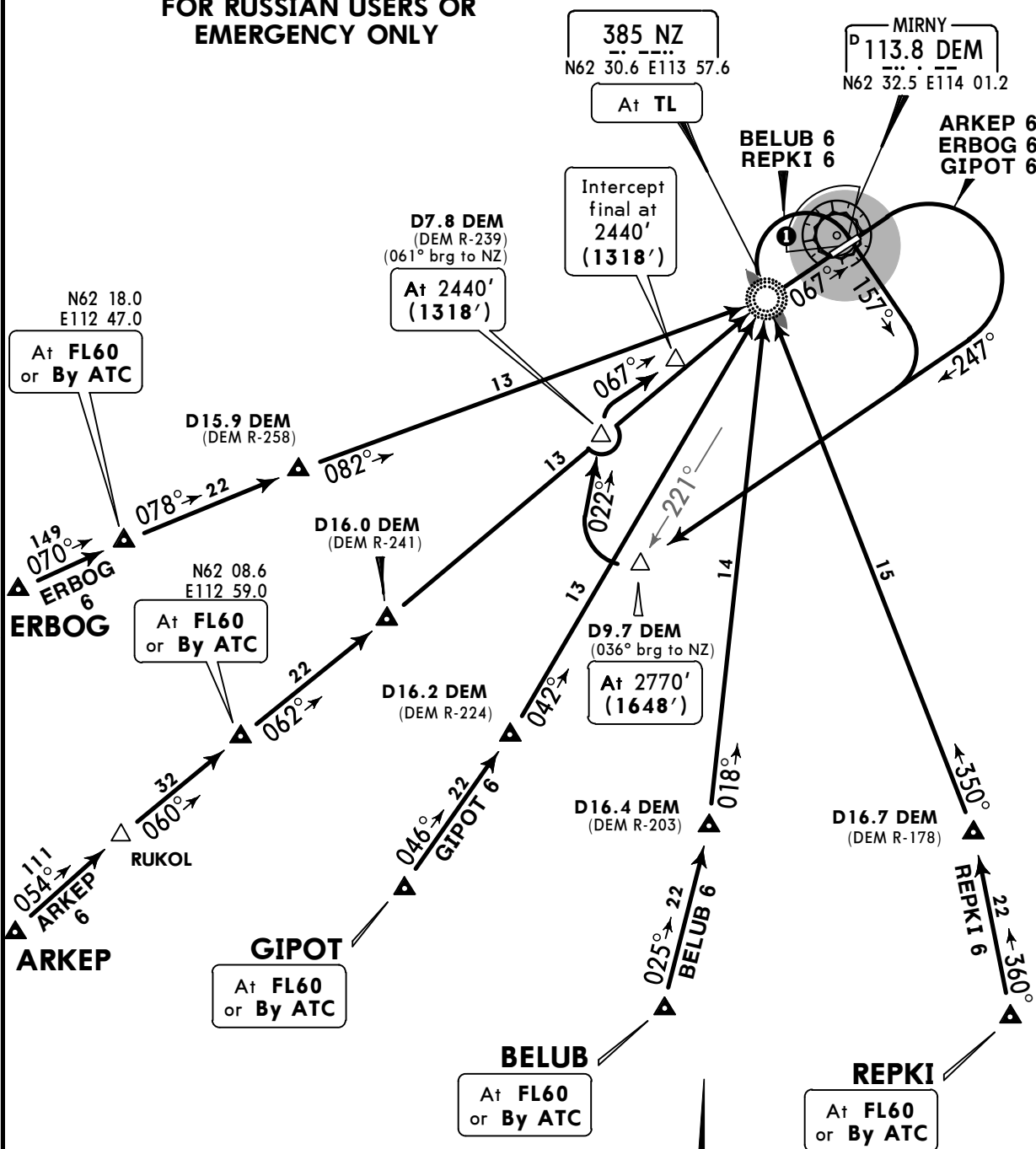
JEPPESSEN
30 NOV 18 **10-2K** Eff 6 Dec

MIRNY, RUSSIA
STAR

ATIS 126.6	Alt Set: MM (hPa on request) QNH on req (QFE) Trans level: FL50 FL60 if pressure is less than 728 mm (970.6 hPa) FL70 if pressure is less than 701 mm (934.6 hPa) Trans alt: 3130' (2008')	 3000' MSA ARP
Apt Elev 1161'	Straight in approach allowed under VFR day and night. Straight in approach allowed under IFR for ACFT with VORDME equipment onboard.	

ARKEP 6, BELUB 6, ERBOG 6
GIPOT 6, REPKI 6
RWY 07 ARRIVALS
WITHOUT RADAR CONTROL
DME REQUIRED
FOR RUSSIAN USERS OR
EMERGENCY ONLY

1 Flights in the 275°-024° sector around ASR within 2.7 NM of ARP below 2770' (1648') are PROHIBITED.



ALT/HEIGHT CONVERSION	
QNH	(QFE)
3130'	(2008' - 600m)
2770'	(1648' - 500m)
2440'	(1318' - 400m)



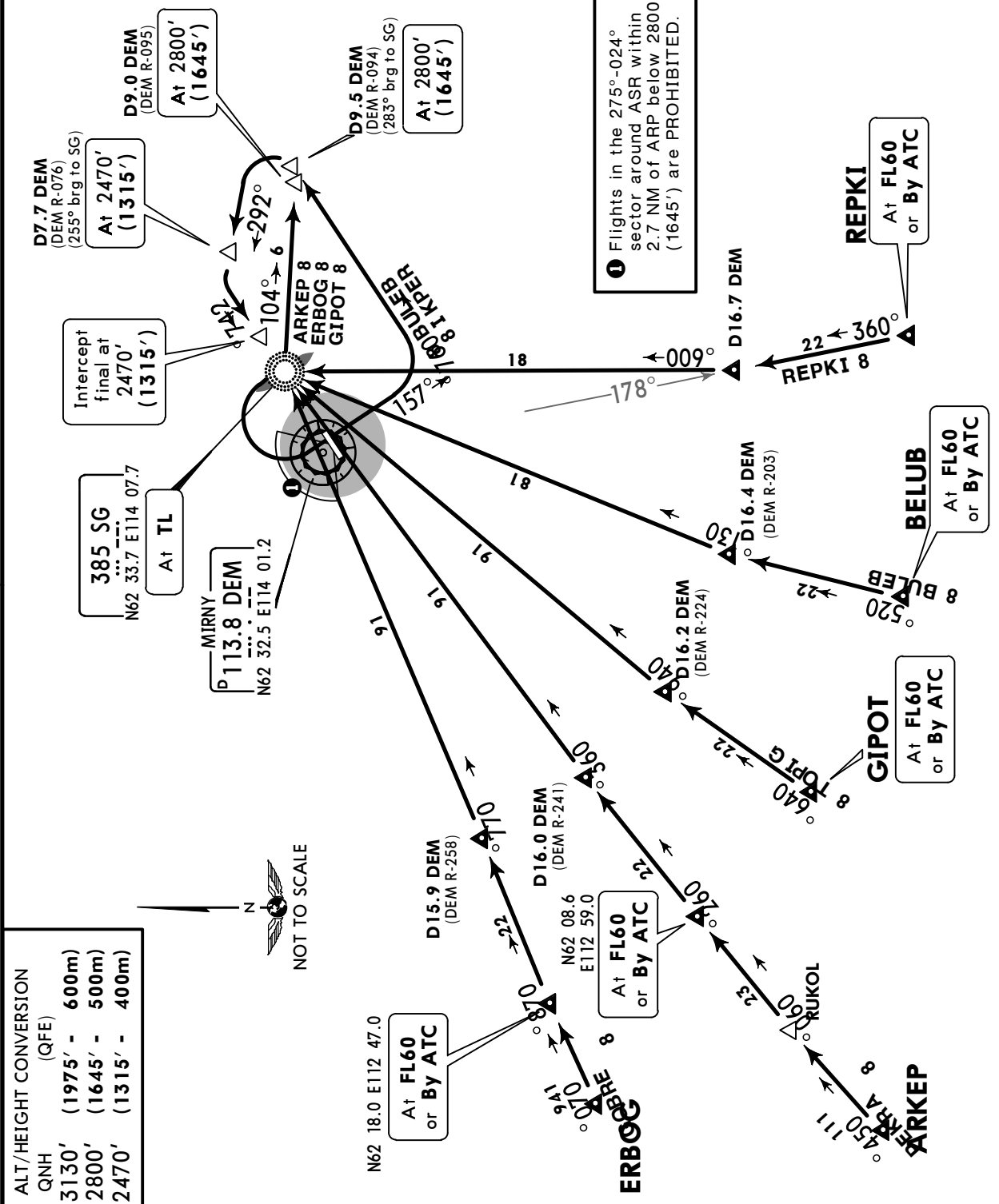
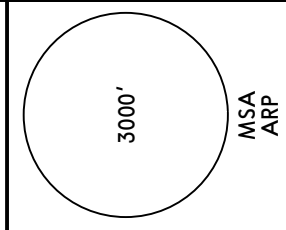
UERR/MJZ
MIRNY

JEPPESEN
30 NOV 18 10-2L Eff 6 Dec

MIRNY, RUSSIA
STAR

ATIS 126.6	Alt Set: MM (hPa on request) QNH on req (QFE) Trans level: FL50 FL60 if pressure is less than 728 mm (970.6 hPa) FL70 if pressure is less than 701 mm (934.6 hPa)
Apt Elev 1161'	Trans alt: 3130' (1975') Straight in approach allowed under VFR day and night. Straight in approach allowed under IFR for ACFT with VORDME equipment onboard.

ARKEP 8, BELUB 8, ERBOG 8
GIPOT 8, REPKI 8
RWY 25 ARRIVALS
WITHOUT RADAR CONTROL
DME REQUIRED
FOR RUSSIAN USERS OR
EMERGENCY ONLY



ALT/HEIGHT CONVERSION (QFE)

QNH	(1975' - 600m)
3130'	(1645' - 500m)
2800'	(1315' - 400m)
2470'	

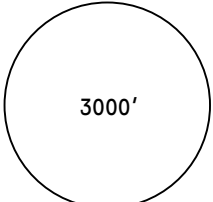
CHANGES: Crossing at SG.

UERR/MJZ
MIRNY

JEPPesen
7 SEP 18 **10-3** Eff 13 Sep

MIRNY, RUSSIA

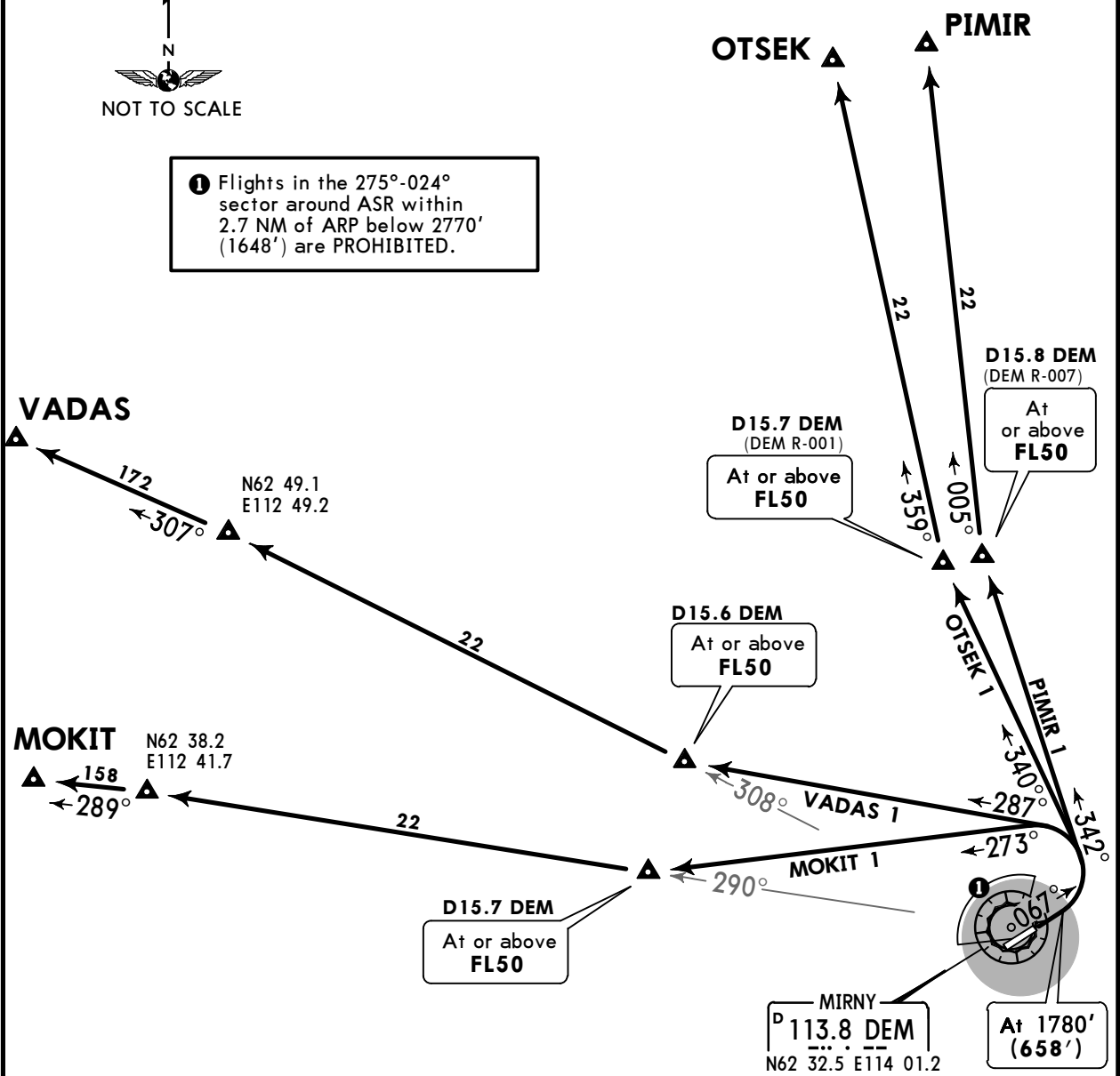
SID

Apt Elev 1161'	QNH on request (QFE) Trans level: FL50 FL60 if pressure is less than 728 mm (960.6 hPa) FL70 if pressure is less than 701 mm (934.6 hPa) Trans alt: 3130' (2008') DME required.	 3000' MSA ARP
--------------------------	---	--

**MOKIT 1, OTSEK 1
PIMIR 1, VADAS 1
RWY 07 DEPARTURES
FOR RUSSIAN USERS ONLY**



1 Flights in the 275°-024° sector around ASR within 2.7 NM of ARP below 2770' (1648') are PROHIBITED.

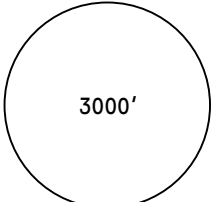


ALT/HEIGHT CONVERSION	
QNH	(QFE)
1780'	(658' - 200m)
2770'	(1648' - 500m)
3130'	(2008' - 600m)

UERR/MJZ
MIRNY

JEPPESEN
7 SEP 18 **10-3A** Eff 13 Sep

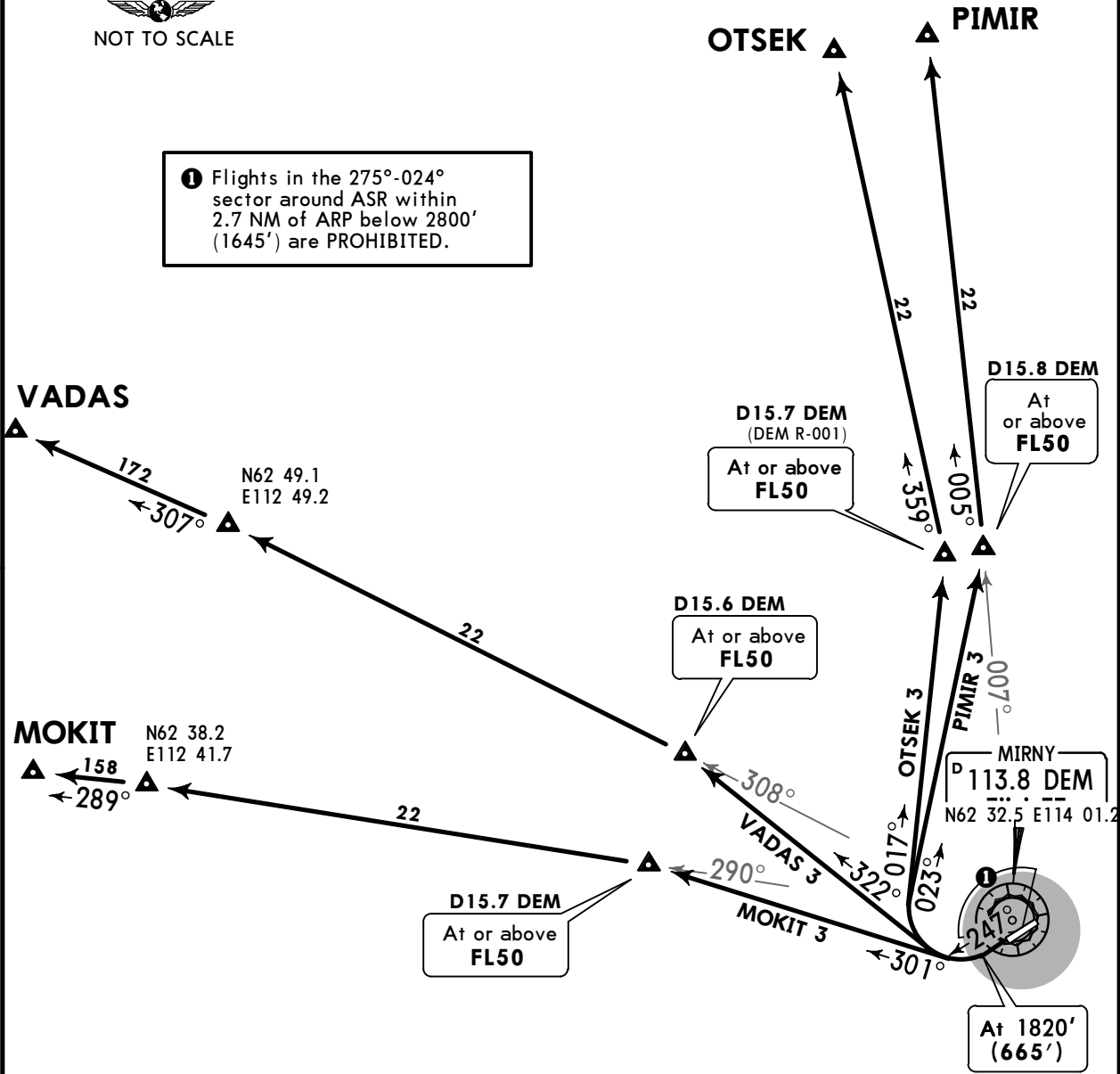
MIRNY, RUSSIA
SID

Apt Elev 1161'	QNH on request (QFE) Trans level: FL50 FL60 if pressure is less than 728 mm (960.6 hPa) FL70 if pressure is less than 701 mm (934.6 hPa) Trans alt: 3130' (1975') DME required.	 <p>3000'</p> <p>MSA ARP</p>
--------------------------	---	---

**MOKIT 3, OTSEK 3
PIMIR 3, VADAS 3
RWY 25 DEPARTURES
FOR RUSSIAN USERS ONLY**



1 Flights in the 275°-024° sector around ASR within 2.7 NM of ARP below 2800' (1645') are PROHIBITED.



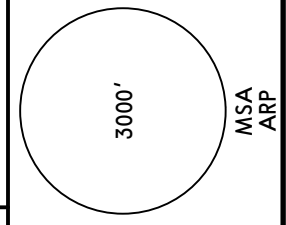
ALT/HEIGHT CONVERSION	
QNH	(QFE)
1820'	(665' - 200m)
2800'	(1645' - 500m)
3130'	(1975' - 600m)

UERR/MJZ
MIRNY

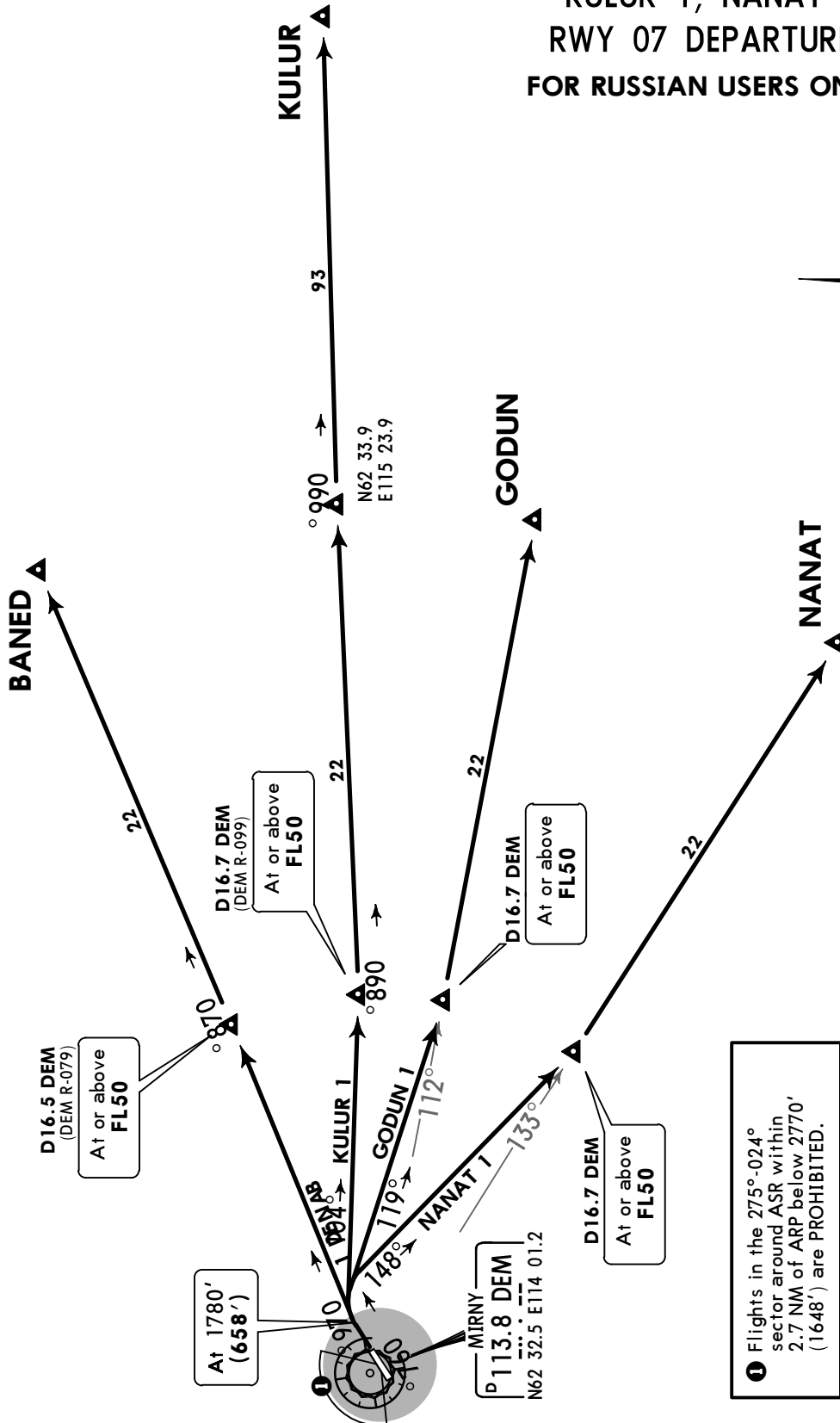
JEPPESEN
7 SEP 18 **10-3B** Eff 13 Sep

MIRNY, RUSSIA
SID

Apt Elev **1161'**
QNH on request (QFE)
Trans level: FL50
FL60 if pressure is less than 728 mm (960.6 hPa)
FL70 if pressure is less than 701 mm (934.6 hPa)
Trans alt: 3130' (2008')
DME required.



BANED 1, GODUN 1
KULUR 1, NANAT 1
RWY 07 DEPARTURES
FOR RUSSIAN USERS ONLY



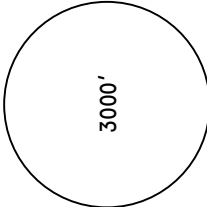
ALT/HEIGHT CONVERSION	
QNH	(QFE)
1780'	(658' - 200m)
2770'	(1648' - 500m)
3130'	(2008' - 600m)

UERR/MJZ
MIRNY

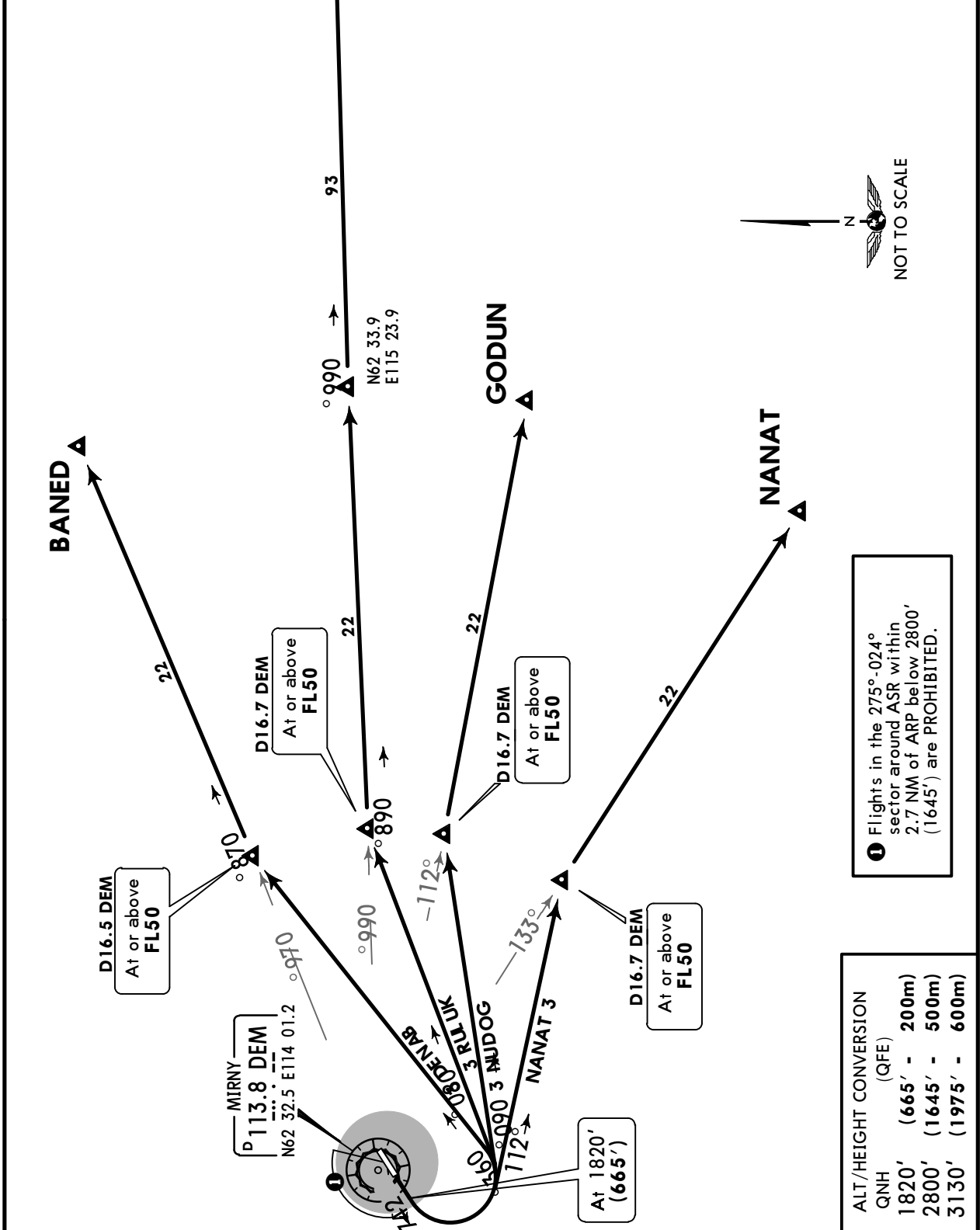
JEPPESEN
7 SEP 18 10-3C Eff 13 Sep

MIRNY, RUSSIA

SID

Apt Elev 1161'	QNH on request (QFE) Trans level: FL50 FL60 if pressure is less than 728 mm (960.6 hPa) FL70 if pressure is less than 701 mm (934.6 hPa) Trans alt: 3130' (1975') DME required.	 <p>3000' MSA ARP</p>
--------------------------	---	--

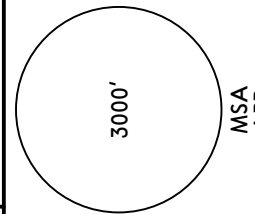
**BANED 3, GODUN 3
KULUR 3, NANAT 3
RWY 25 DEPARTURES
FOR RUSSIAN USERS ONLY**



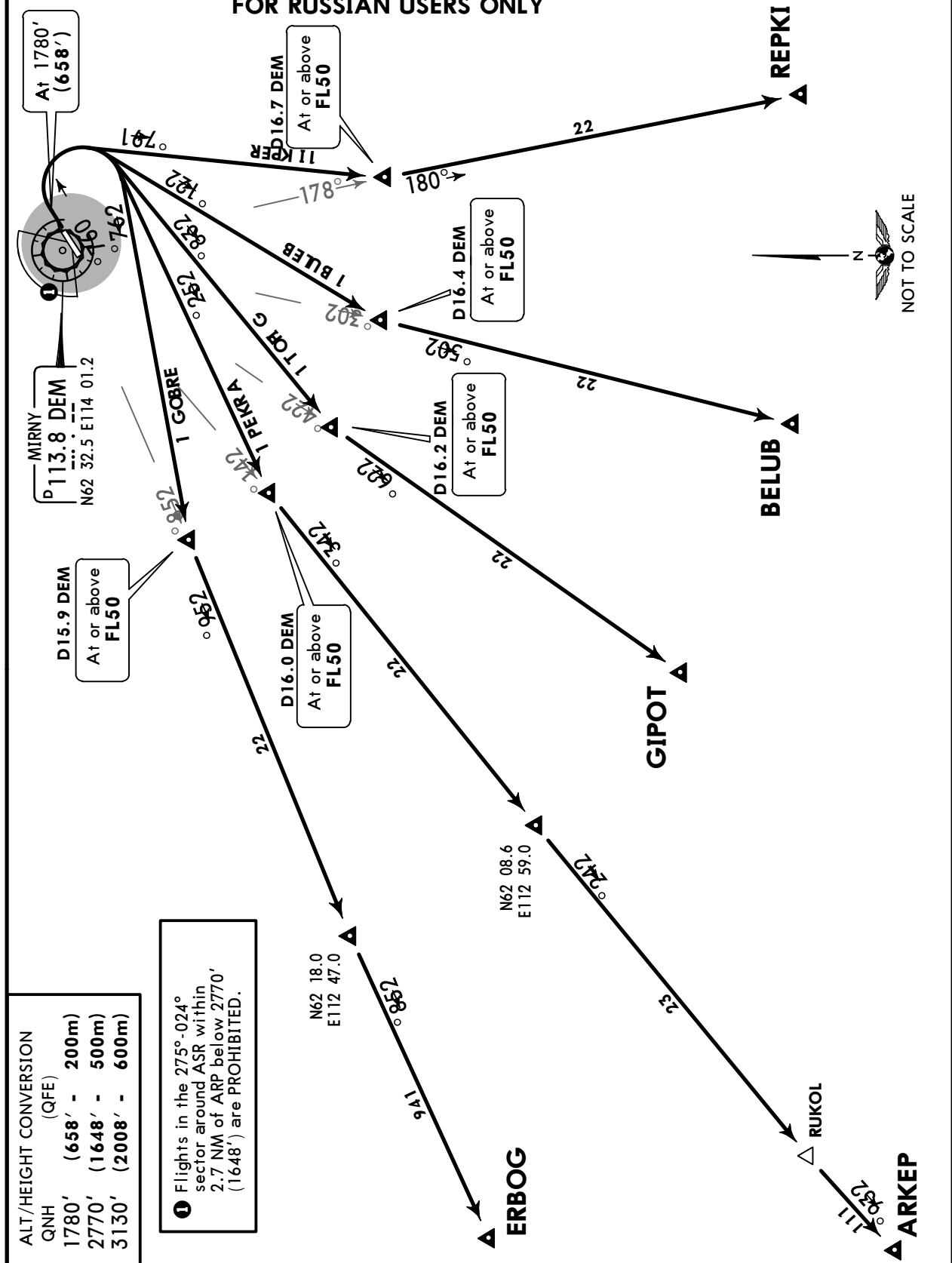
UERR/MJZ
MIRNY

JEPPESEN
7 SEP 18 **10-3D** Eff 13 Sep

MIRNY, RUSSIA
SID

Apt Elev 1161'	QNH on request (QFE) Trans level: FL50 FL60 if pressure is less than 728 mm (960.6 hPa) FL70 if pressure is less than 701 mm (934.6 hPa) Trans alt: 3130' (2008') DME required.	 <p>3000' MSA ARP</p>
--------------------------	---	--

**ARKEP 1, BELUB 1, ERBOG 1
GIPOT 1, REPKI 1
RWY 07 DEPARTURES
FOR RUSSIAN USERS ONLY**



ALT/HEIGHT CONVERSION (QFE)	
QNH	1780' (658' - 200m)
	2770' (1648' - 500m)
	3130' (2008' - 600m)

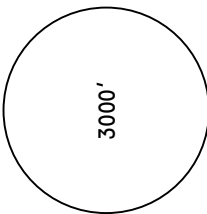
① Flights in the 275°-024° sector around ASR within 2.7 NM of ARP below 2770' (1648') are PROHIBITED.

UERR/MJZ
MIRNY

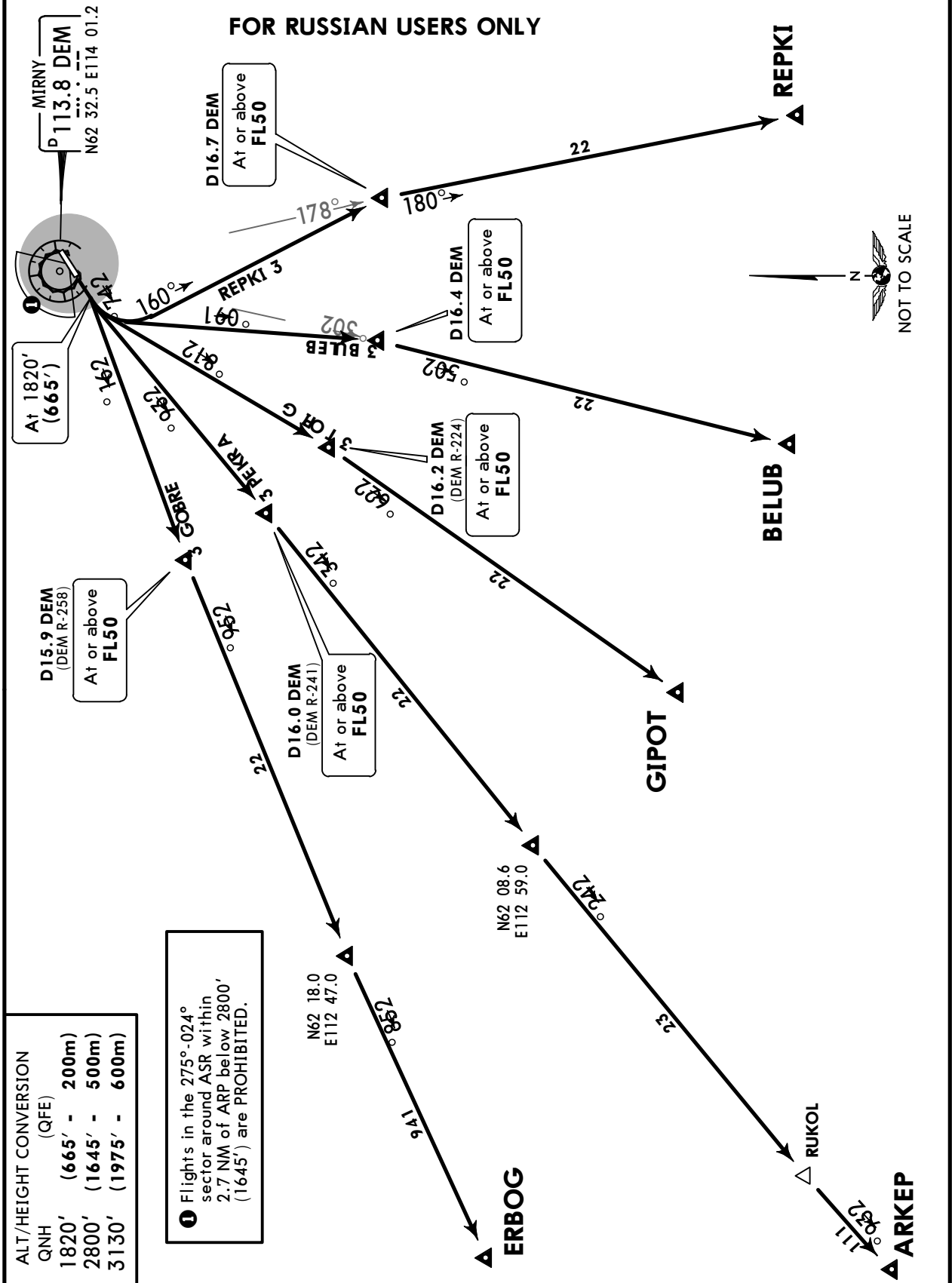
JEPPESSEN
7 SEP 18 **10-3E** Eff 13 Sep

MIRNY, RUSSIA

SID

Apt Elev 1161'	QNH on request (QFE) Trans level: FL50 FL60 if pressure is less than 728 mm (960.6 hPa) FL70 if pressure is less than 701 mm (934.6 hPa) Trans alt: 3130' (1975') DME required.	 <p>3000' MSA ARP</p>
--------------------------	---	--

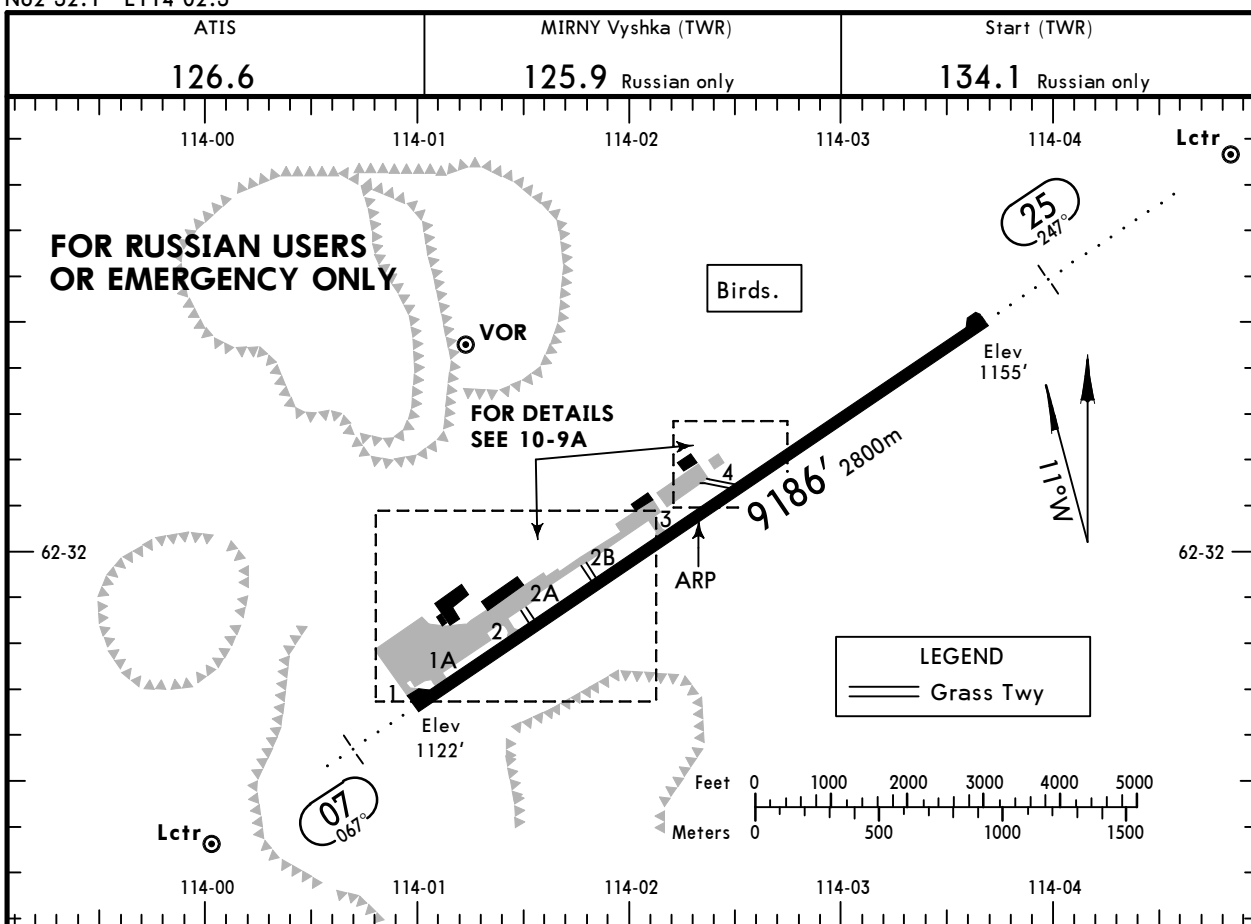
**ARKEP 3, BELUB 3, ERBOG 3
GIPOT 3, REPKI 3
RWY 25 DEPARTURES
FOR RUSSIAN USERS ONLY**



UERR/MJZ
 Apt Elev **1161'**
 N62 32.1 E114 02.3

JEPPesen
 28 DEC 18 **(10-9)** Eff 3 Jan

MIRNY, RUSSIA
MIRNY



ADDITIONAL RUNWAY INFORMATION

RWY				USABLE LENGTHS		TAKE-OFF	WIDTH
	HIRL (57m)	ALS	PAPI-R (2.67°)	Threshold	Glide Slope		
07	HIRL (57m)	ALS	PAPI-R (2.67°)			①	148' 45m
25	HIRL (57m)	ALS	PAPI-L (3.00°)		8153' 2486m		

① TAKE-OFF RUN AVAILABLE
 RWY 07:

From rwy head	9186' (2800m)
twy 1A int	8694' (2650m)
twy 2 int	7546' (2300m)
twy 2A int	6923' (2110m)
twy 2B int	6234' (1900m)
twy 3 int	5184' (1580m)
twy 4 int	3773' (1150m)

RWY 25:

From rwy head	9186' (2800m)
twy 4 int	5413' (1650m)
twy 3 int	4003' (1220m)

TAKE-OFF

AIR CARRIER (JAA)
All Rwys

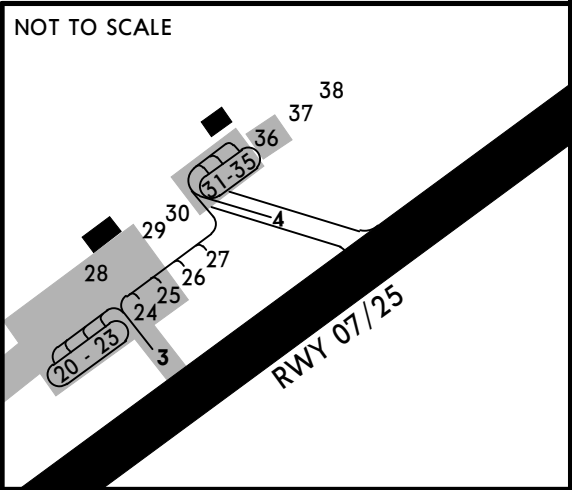
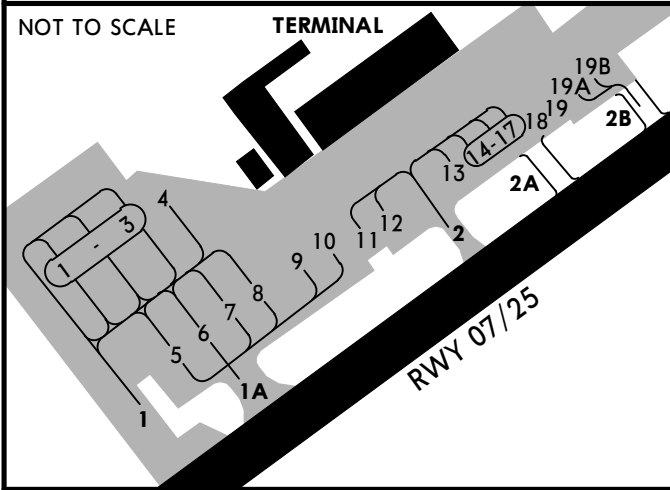
	LVP must be in force RCLM (DAY only) or RL	RCLM (DAY only) or RL
A		
B	250m	400m
C		
D	300m	

UERR/MJZ

JEPPESEN
28 DEC 18 (10-9A) Eff 3 Jan

MIRNY, RUSSIA
MIRNY

FOR RUSSIAN USERS OR EMERGENCY ONLY



180° turns shall be carried out on turning pads only; right-hand turn on turning pad at thresh 07, left-hand turn on turning pad at thresh 25.
Taxiing shall be carried out at minimum speed strictly along centerline.
Crews shall exercise MAX CAUTION.
Stands 1 thru 4, 20 thru 30 and 36 thru 38 available for helicopters.

UERR/MJZ

Standard
MIRNY, RUSSIA
MIRNY

STRAIGHT-IN RWY		A	B	C	D
07	①② 2 NDB	1510'(388') R1500m	1510'(388') R1500m	1560'(438') R1800m	1560'(438') R1800m
	ALS out	R1500m	R1500m	R2000m	R2000m
	①③ 2 NDB	2100'(978') R4300m	2100'(978') R4300m	2100'(978') R4300m	2100'(978') R4300m
	ALS out	R4500m	R4500m	R4500m	R4500m
	①② NZ NDB	1840'(718') R1500m	1840'(718') R1500m	1860'(738') R2400m	1860'(738') R2400m
	①③ NZ NDB	1890'(768') R3400m	1890'(768') R3400m	1910'(788') R3400m	1910'(788') R3400m
	ALS out	R3600m	R3600m	R3600m	R3600m
①② N NDB	1600'(478') R1500m	1600'(478') R1500m	1860'(738') R2400m	1860'(738') R2400m	
③ N NDB	1910'(788') R3600m	1910'(788') R3600m	1910'(788') R3800m	1910'(788') R3800m	
ALS out	R3800m	R3800m	R4000m	R4000m	
25	ILS	1355'(200') R1000m	1358'(203') R1000m	1368'(213') R1000m	1378'(223') R1000m
	ALS out	R1200m	R1200m	R1200m	R1200m
	LOC	NOT AUTH	NOT AUTH	NOT AUTH	NOT AUTH
	① 2 NDB or SG NDB	1460'(305') R1200m	1460'(305') R1200m	1480'(325') R1300m	1480'(325') R1300m
	ALS out	R1400m	R1400m	R1500m	R1500m
	①② S NDB	1460'(305') R1200m	1460'(305') R1200m	1480'(325') R1300m	1480'(325') R1300m
ALS out	R1400m	R1400m	R1500m	R1500m	
③ S NDB	1510'(355') R1600m	1510'(355') R1600m	1530'(375') R1900m	1530'(375') R1900m	
ALS out	R1800m	R1800m	R2100m	R2100m	

- ① Continuous Descent Final Approach.
- ② with FAF.
- ③ w/o FAF.

TAKE-OFF

Low Visibility Take-off		Day: RL or RCLM Night: RL		Adequate vis ref (Day only)
A	RVR 300m	400m		500m
B				
C				
D				

UERR/MJZ
MIRNY

JEPPesen
7 SEP 18 **(11-1)** Eff 13 Sep

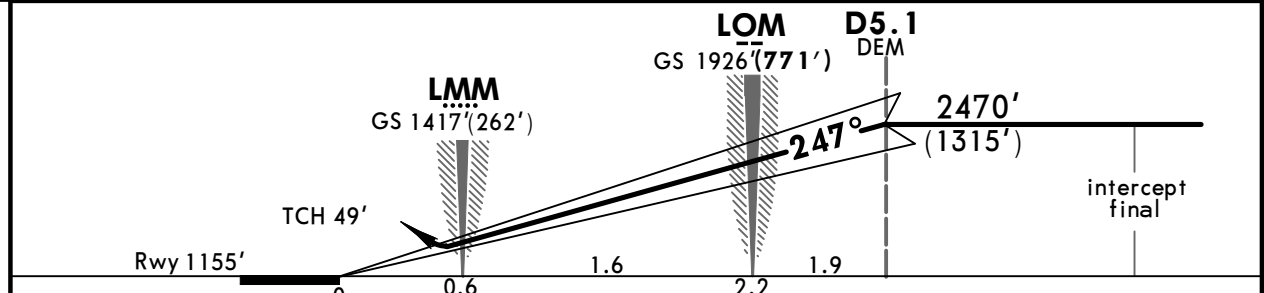
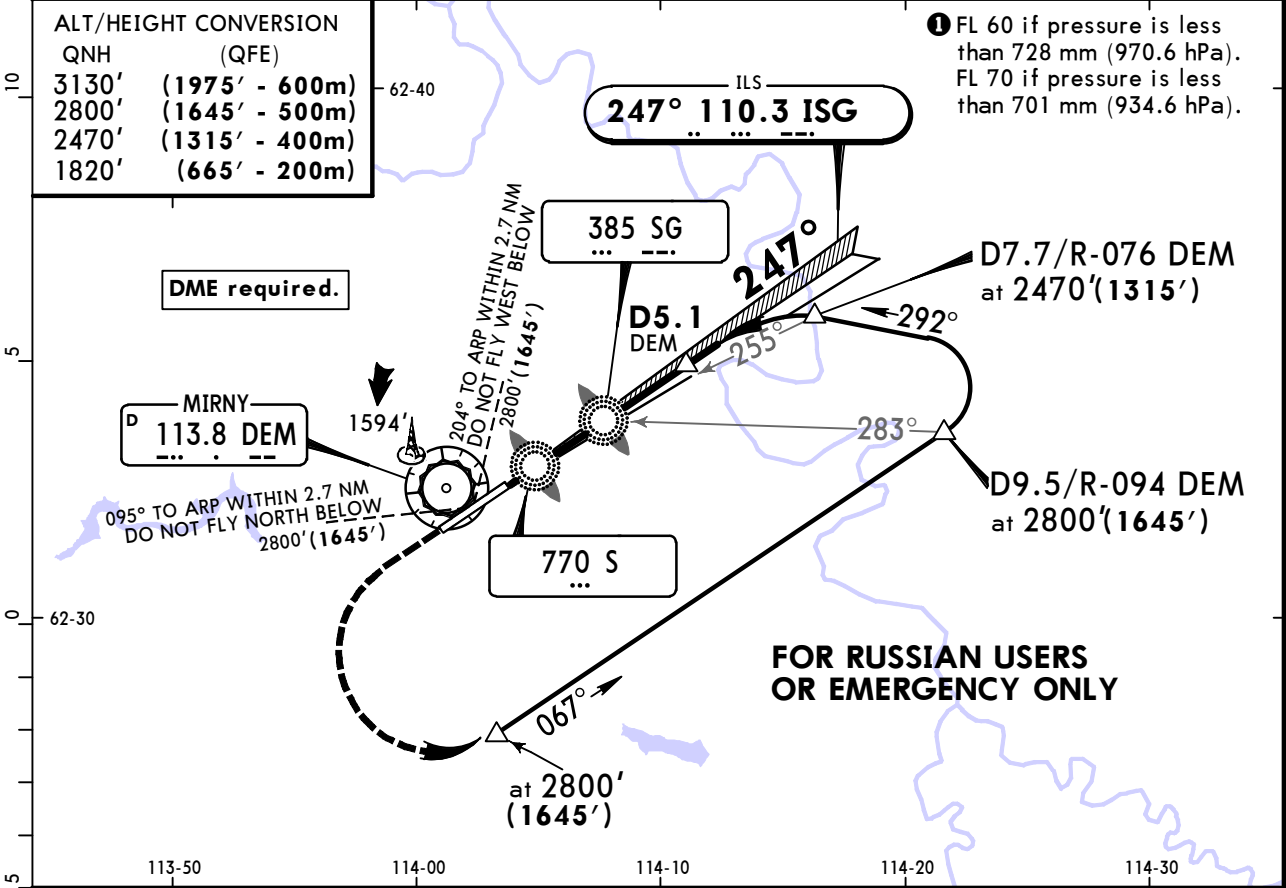
MIRNY, RUSSIA
ILS Rwy 25

ATIS 126.6		MIRNY Vyshka (TWR) 125.9 Russian only		MIRNY Start (TWR) 134.1 Russian only	
LOC ISG 110.3	Final Apch Crs 247°	GS LOM 1926'(771')	ILS DA(H) Refer to Minimums	Apt Elev 1161' Rwy 1155'	3000 MSA ARP within 27 NM
MISSED APCH: Climb to 1820'(665'), then turn LEFT onto 067° climbing to 2800'(1645'), then according to chart.					

Alt Set: MM (hPa on req) QNH on req (QFE) Trans level: FL 50 **1** Trans alt: 3130'(1975')

ALT/HEIGHT CONVERSION	
QNH	(QFE)
3130'	(1975' - 600m)
2800'	(1645' - 500m)
2470'	(1315' - 400m)
1820'	(665' - 200m)

1 FL 60 if pressure is less than 728 mm (970.6 hPa).
FL 70 if pressure is less than 701 mm (934.6 hPa).



Gnd speed-Kts	70	90	100	120	140	160	ALS PAPI	1820' (665')	067° LT	2800' (1645')
ILS GS	3.00°	372	478	531	637	849		↑	↑	↑

STRAIGHT-IN LANDING RWY 25	
DA(H) ILS	LOC (GS out)
A: 1355'(200') C: 1368'(213')	
B: 1358'(203') D: 1378'(223')	
FULL	ALS out

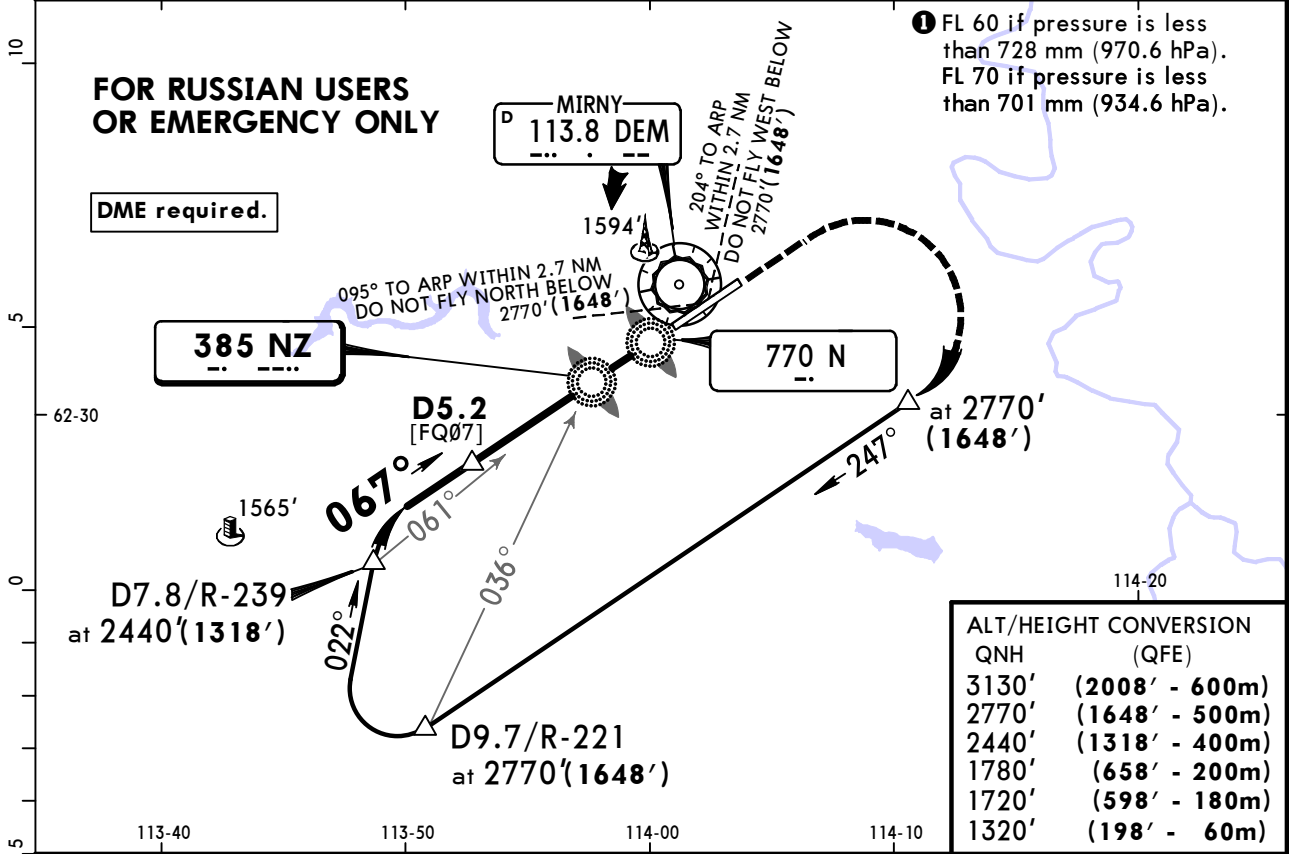
A	1200m	NOT AUTHORIZED
B		
C		
D		

UERR/MJZ
MIRNY

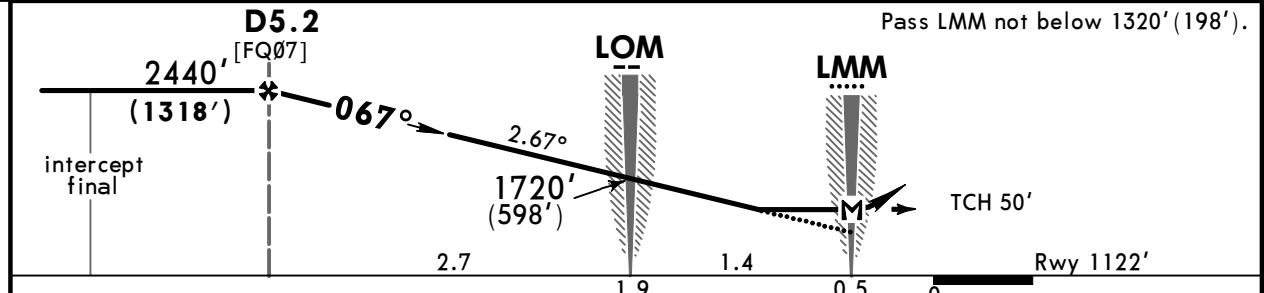
JEPPESEN
7 SEP 18
Eff 13 Sep **(16-1)**

MIRNY, RUSSIA
2 NDB or NZ NDB Rwy 07

ATIS 126.6		MIRNY Vyshka (TWR) 125.9 Russian only		MIRNY Start (TWR) 134.1 Russian only	
NDB NZ 385	Final ApcH Crs 067°	Minimum Alt D5.2 2440' (1318')	MDA(H) Refer to Minimums	Apt Elev 1161' Rwy 1122'	3000 MSA ARP within 27 NM
MISSED APCH: Climb to 1780'(658'), then turn RIGHT onto 247° climbing to 2770'(1648'), then according to chart.					
Alt Set: MM (hPa on req) QNH on req (QFE) Trans level: FL 50 1 Trans alt: 3130' (2008') Short duration activation of GPWS may be arised during descending between LOM and LMM.					



QNH	(QFE)
3130'	(2008' - 600m)
2770'	(1648' - 500m)
2440'	(1318' - 400m)
1780'	(658' - 200m)
1720'	(598' - 180m)
1320'	(198' - 60m)



Gnd speed-Kts	70	90	100	120	140	160	ALS	1780'	247°	2770'
Descent Angle	2.67°	331	425	472	567	756	PAPI	(658')	RT	(1648')
MAP at LMM										

PANS OPS	STRAIGHT-IN LANDING RWY 07			
	with FAF	2 NDB w/o FAF	NZ NDB with FAF	NZ NDB w/o FAF
A	1600m	2000m	1600m	1600m
B		2400m		2000m
C	2000m	4800m	3200m	3600m
D	2400m		3600m	4000m

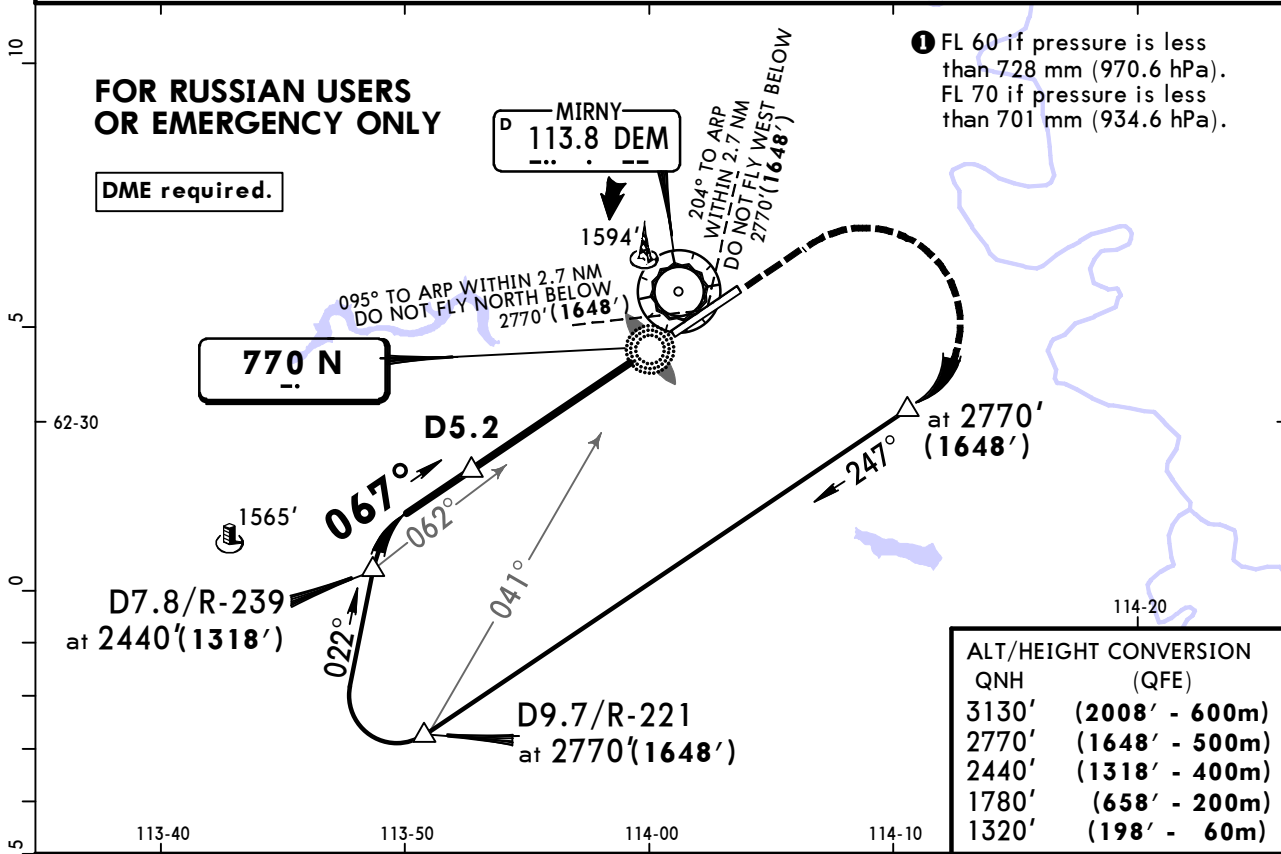
UERR/MJZ
MIRNY

JEPPESEN
7 SEP 18 **(16-2)** Eff 13 Sep

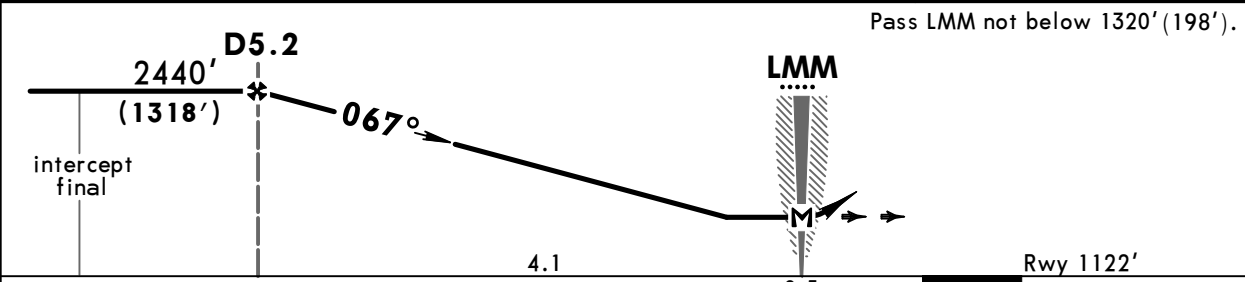
MIRNY, RUSSIA
N NDB Rwy 07

ATIS 126.6		MIRNY Vyshka (TWR) 125.9 Russian only		MIRNY Start (TWR) 134.1 Russian only	
NDB N 770	Final Apc Crs 067°	Minimum Alt D5.2 2440' (1318')	MDA(H) (CONDITIONAL) Refer to Minimums	Apt Elev 1161' Rwy 1122'	3000 MSA ARP within 27 NM
MISSED APCH: Climb to 1780' (658'), then turn RIGHT onto 247° climbing to 2770' (1648'), then according to chart.					

Alt Set: MM (hPa on req) QNH on req (QFE) Trans level: FL 50 **1** Trans alt: 3130' (2008')
Short duration activation of GPWS may be arised during descending for a length of 1.3 NM before LMM.



QNH	(QFE)
3130'	(2008' - 600m)
2770'	(1648' - 500m)
2440'	(1318' - 400m)
1780'	(658' - 200m)
1320'	(198' - 60m)



Gnd speed-Kts	70	90	100	120	140	160	ALS	1780'	247°	2770'
Descent Angle	2.67°	331	425	472	567	756	PAPI	(658')	RT	(1648')
MAP at LMM										

	STRAIGHT-IN LANDING RWY 07	
	with FAF	w/o FAF
MDA(H)	AB: 1600' (478')	MDA(H) 1910' (788')
	CD: 1860' (738')	
	ALS out	ALS out
A	1600m	1600m
B		2000m
C	3200m	3600m
D	3600m	4000m

UERR/MJZ
MIRNY

JEPPESEN
7 SEP 18
Eff 13 Sep (16-3)

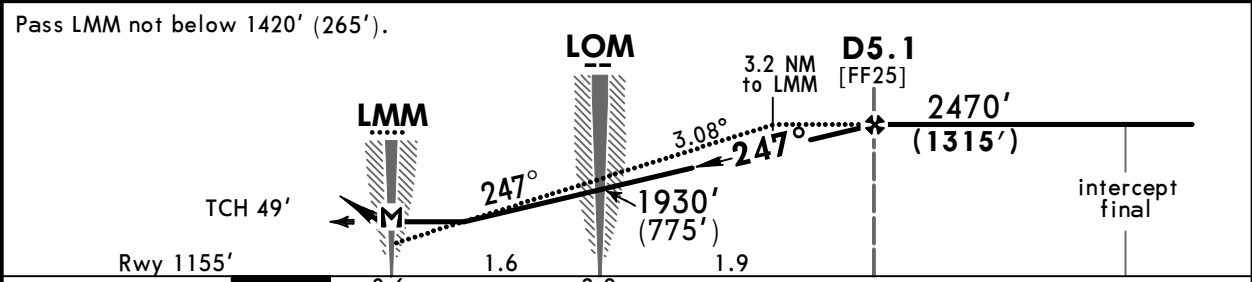
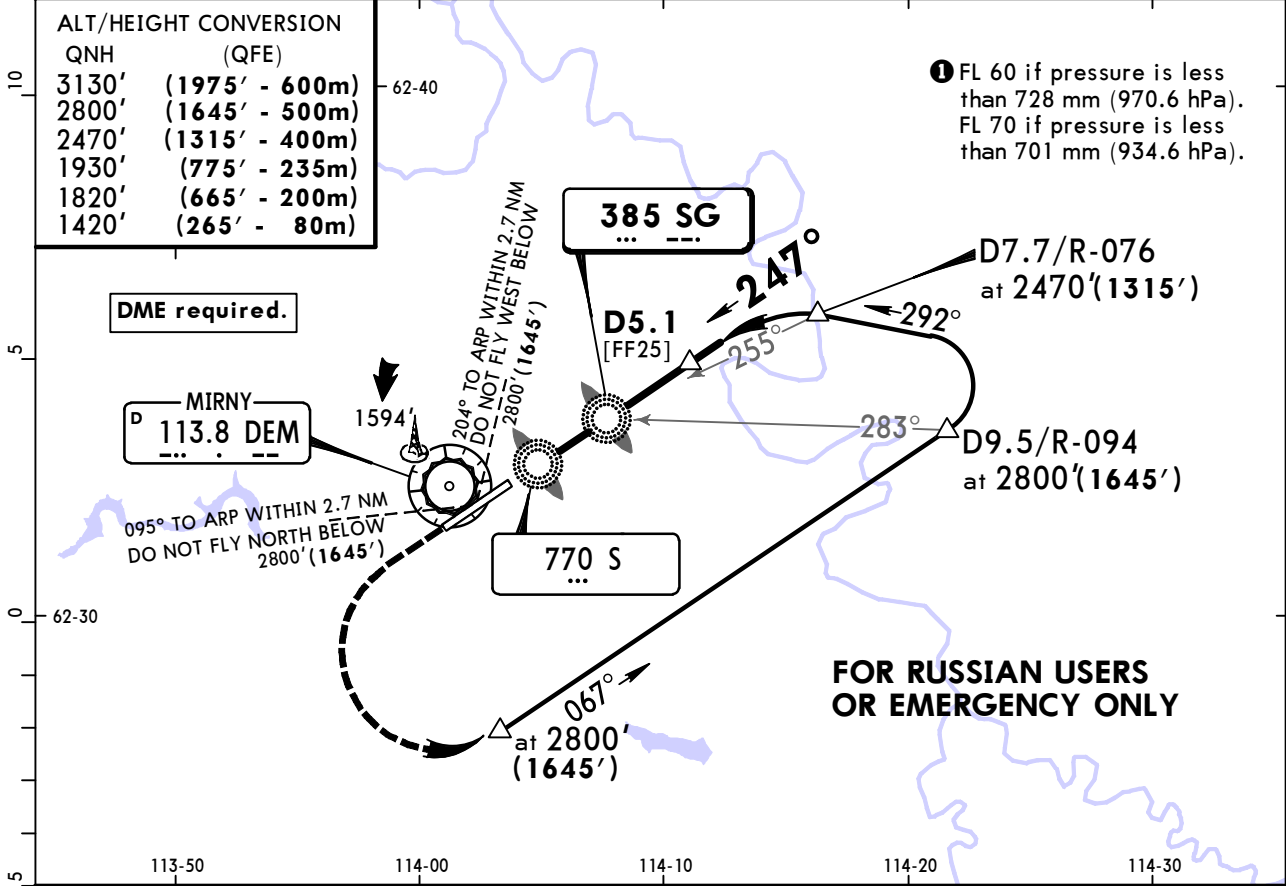
MIRNY, RUSSIA
2 NDB or SG NDB Rwy 25

ATIS 126.6		MIRNY Vyshka (TWR) 125.9 Russian only		MIRNY Start (TWR) 134.1 Russian only	
NDB SG 385	Final Apch Crs 247°	Minimum Alt D5.1 2470'(1315')	MDA(H) Refer to Minimums	Apt Elev 1161' Rwy 1155'	3000 MSA ARP within 27 NM
MISSED APCH: Climb to 1820'(665'), then turn LEFT onto 067° climbing to 2800'(1645'), then according to chart.					

Alt Set: MM (hPa on req) QNH on req (QFE) Trans level: FL 50 ① Trans alt: 3130' (1975')

ALT/HEIGHT CONVERSION	
QNH	(QFE)
3130'	(1975' - 600m)
2800'	(1645' - 500m)
2470'	(1315' - 400m)
1930'	(775' - 235m)
1820'	(665' - 200m)
1420'	(265' - 80m)

① FL 60 if pressure is less than 728 mm (970.6 hPa).
FL 70 if pressure is less than 701 mm (934.6 hPa).



Gnd speed-Kts	70	90	100	120	140	160	ALS PAPI ...	1820' (665')	067°	2800' (1645')
Descent Angle	3.08°	381	490	545	654	763		872	↑	←
MAP at LMM										

STRAIGHT-IN LANDING RWY 25

MDA(H) AB: 1460' (305') CD: 1480' (325')

ALS out

PANS OPS	A	1600m	
	B		
	C		
	D		

UERR/MJZ
MIRNY

JEPPesen
7 SEP 18 **(16-4)** Eff 13 Sep

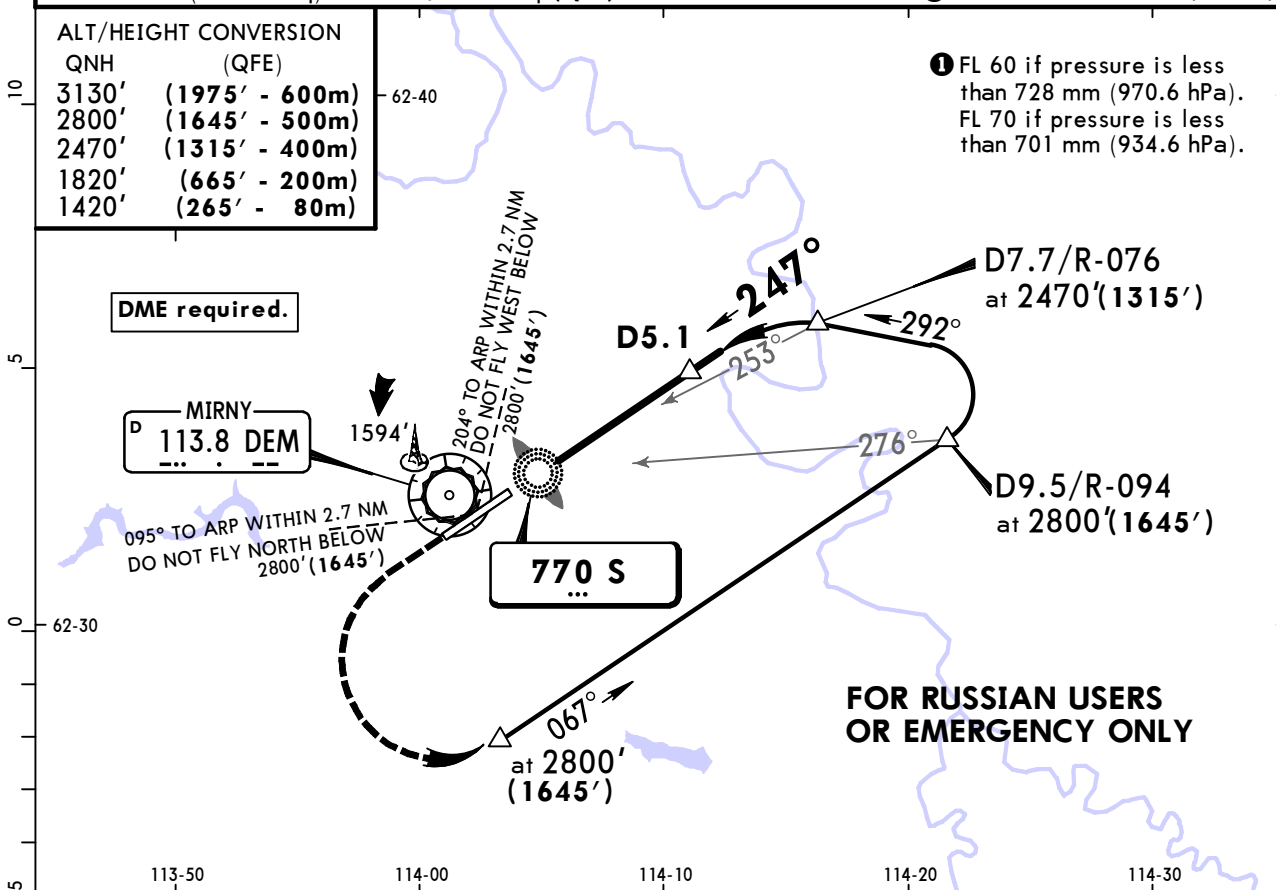
MIRNY, RUSSIA
S NDB Rwy 25

ATIS 126.6		MIRNY Vyshka (TWR) 125.9 Russian only		MIRNY Start (TWR) 134.1 Russian only	
NDB S 770	Final Apch Crs 247°	Minimum Alt D5.1 2470'(1315')	MDA(H) (CONDITIONAL) Refer to Minimums	Apt Elev 1161' Rwy 1155'	3000 MSA ARP within 27 NM
MISSED APCH: Climb to 1820'(665'), then turn LEFT onto 067° climbing to 2800'(1645'), then according to chart.					

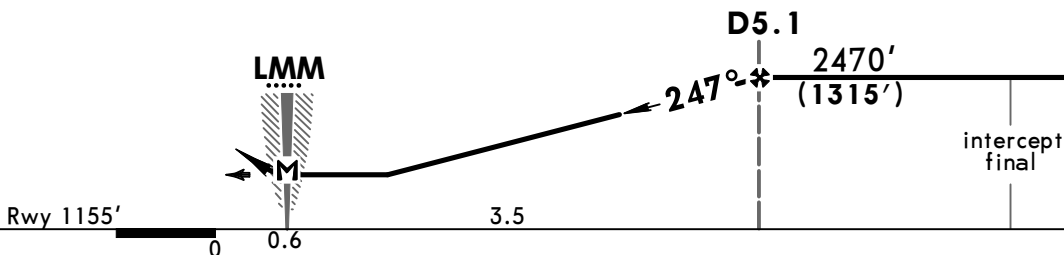
Alt Set: MM (hPa on req) QNH on req (QFE) Trans level: FL 50 ① Trans alt: 3130' (1975')

ALT/HEIGHT CONVERSION	
QNH	(QFE)
3130'	(1975' - 600m)
2800'	(1645' - 500m)
2470'	(1315' - 400m)
1820'	(665' - 200m)
1420'	(265' - 80m)

① FL 60 if pressure is less than 728 mm (970.6 hPa).
FL 70 if pressure is less than 701 mm (934.6 hPa).



Pass LMM not below 1420' (265').



Gnd speed-Kts	70	90	100	120	140	160	ALS PAPI 1820' (665')	067° LT	2800' (1645')
Descent Angle	3.00°	372	478	531	637	743			
MAP at LMM									

STRAIGHT-IN LANDING RWY 25	
with FAF MDA(H) AB: 1460'(305') CD: 1480'(325')	w/o FAF MDA(H) AB: 1510'(355') CD: 1530'(375')
ALS out	ALS out

PANS OPS	A		
	B		
	C	1600m	1600m
	D		2000m

Chart changes since cycle 08-2019

ADD = added chart, REV = revised chart, DEL = deleted chart.

ACT	PROCEDURE IDENT	INDEX	REV DATE	EFF DATE
-----	-----------------	-------	----------	----------

MIRNY, (MIRNY - UERR)

TERMINAL CHART CHANGE NOTICES

No Chart Change Notices for Airport UERR