

## **List of pages in this Trip Kit**

Trip Kit Index

Airport Information For UEEE

Terminal Charts For UEEE

Revision Letter For Cycle 09-2019

Change Notices

Notebook

## **General Information**

Location: YAKUTSK RUS  
ICAO/IATA: UEEE / YKS  
Lat/Long: N62° 05.6', E129° 46.4'  
Elevation: 328 ft

Airport Use: Public  
Daylight Savings: Not Observed  
UTC Conversion: -9:00 = UTC  
Magnetic Variation: 15.0° W

Fuel Types: Jet A-1  
Repair Types: Minor Airframe, Minor Engine  
Customs: Yes  
Airport Type: IFR  
Landing Fee: Yes  
Control Tower: Yes  
Jet Start Unit: No  
LLWS Alert: No  
Beacon: No

Sunrise: 1842 Z  
Sunset: 1152 Z

## **Runway Information**

Runway: 23L  
Length x Width: 11155 ft x 197 ft  
Surface Type: asphalt  
TDZ-Elev: 314 ft  
Lighting: Edge, ALS, Centerline, TDZ

Runway: 05R  
Length x Width: 11155 ft x 197 ft  
Surface Type: asphalt  
TDZ-Elev: 323 ft  
Lighting: Edge, ALS, Centerline

## **Communication Information**

ATIS: 126.200 Non-English  
Yakutsk Tower: 120.000  
Yakutsk Ground: 121.700  
Yakutsk Apron Ramp/Taxi: 119.000  
Yakutsk Approach: 129.300  
Yakutsk Radar: 120.300

UEEE/YKS  
YAKUTSK

JEPPesen

19 AUG 16

10-1P

YAKUTSK, RUSSIA  
AIRPORT BRIEFING

---

## 1. GENERAL

---

### 1.1. ATIS

ATIS 126.2

### 1.2. NOISE ABATEMENT PROCEDURES

Noise abatement procedures during take-off and approach phases shall be carried out by crews of all ACFT from 2300-0600LT. Deviation from these procedures may be permitted for flight safety reasons or if these procedures do not comply with the ACFT Flight Manual for specified ACFT.

Engines run-up shall be carried out on stands 1G, 2G and 3G.

### 1.3. LOW VISIBILITY PROCEDURES

Low visibility procedures shall be applied when RVR values are less than 550m. The flight crews shall be informed about putting into operation LVP by ATIS or by ATS controller using the following phrase: "Low visibility procedures in progress, check your minimum".

During the period of LVP validity take-off not from the RWY extremity and take-off without stop at the line-up position are prohibited.

### 1.4. OTHER

Birds in the vicinity of APT.

---

## 2. ARRIVAL

---

### 2.1. NOISE ABATEMENT PROCEDURES

During approach to runway 05R, up to 11.3NM to touchdown proceed at not less than 3280' (2955'-900m) and at aerodrome traffic circuit speed with wing devices and gear set into enroute position. At 11.3NM descend to 2630' (2305'-700m). Before touchdown lower gear and wing devices into intermediate position at 15°-30°.

While descending to 1640' (1315'-400m) maintain 160 KT ( $\pm$  15 KT), but not less than that established by the Aircraft Flight Manual. At 1640' (1315'-400m) the crew shall finish to set flaps into landing position and set up speed of final approach taking into account ACFT landing mass. Finishing of setting flaps into landing position and of ACFT stabilization shall be completed before crossing LOM.

### 2.2. CAT II OPERATIONS

RWY 23L approved for CAT II operations, special aircrew and ACFT certification required.

UEEE/YKS  
YAKUTSK

JEPPESEN

19 AUG 16

10-1P1

YAKUTSK, RUSSIA  
AIRPORT BRIEFING**3. DEPARTURE****3.1. TAXI PROCEDURES**

Closed RWY 05L/23R for ACFT taxiing only.

TWY C is allowed for taxiing of ACFT with a wingspan of up to 108'/33m and maximum mass of 30 tons. Taxiing shall be carried out at idle power of inboard engines. TWY C shall be considered vacant after receiving the flight crew's report about RWY holding position on TWY B occupation.

RWY 05R/23L shall be considered vacant after receiving the flight crew's report. During departure, ACFT taxi route to RWY 05R/23L RWY holding position on TWY A, B, C shall be assigned by GND controller. "Follow-me" vehicle shall be provided or towing shall be carried out on the pilot-in-command's request.

TWY A, B, D shall be considered vacant after receiving the flight crew's report about RWY 05R/23L occupation.

TWY A, B, C, D shall be considered vacant when the flight crew has reported occupation of the stand assigned by ATS unit or after the flight crew's report: "Marshaller in sight". The flight crew shall report to GND controller about stand occupation using the following phraseology: "ACFT (callsign) on stand (number)".

**3.2. NOISE ABATEMENT**

During take-off and climbing phase:

- |   |  |
|---|--|
| Take-off                                    | - Take-off power of all engines.<br>Take-off flaps.<br>Climb at V2 + 10-20 KT.   |
| At 660' (332'-100m) to 990' (662'-200m)     | - Turns shall be carried out with 15° bank.  |
| At 990' (662'-200m) or above                | - Turns shall be carried out with 25° bank.  |
| At 1810' (1482'-450m)                       | - Engine power shall be reduced to nominal maintaining positive speed of climb.  |
| At 1810' (1482'-450m) to 3290' (2962'-900m) | - Climb at V2 + 10-20 KT.  |
| At 3290' (2962'-900m)                       | - Accelerate smoothly to enroute climb speed with flap retraction on schedule.<br>Further climb shall be carried out at a speed recommended by the ACFT Flight Manual. |

Taking into account aeronautical and meteorological conditions, RWY 05R is preferential. When RWY 23L is used, CAT C and D ACFT shall carry out take-off from the beginning of the RWY according to noiseless take-off procedures recommended by the ACFT Flight Manual.

UEEE/YKS  
YAKUTSK

**JEPPESEN**  
 28 DEC 18 (10-2) Eff 3 Jan
YAKUTSK, RUSSIA  
RNAV STAR

RNAV STAR DESIGNATION	REFER TO CHART
GIMEK 5C, SORIP 5C, TUROP 5C	10-2B
GIMEK 5D, SORIP 5D, TUROP 5D	10-2C
IDESA 5C, TEKDI 5C	10-2D
IDESA 5D, TEKDI 5D	10-2E
AGMAT 5C, DOBUS 5C, NENAL 5C	10-2F
AGMAT 5D, DOBUS 5D, NENAL 5D	10-2G
BESIB 5C, KUTEG 5C, OKTUR 5C	10-2H
BESIB 5D, KUTEG 5D, OKTUR 5D	10-2J
DENIB 5C, DIROM 5C, OGLIS 5C	10-2K
DENIB 5D, DIROM 5D, OGLIS 5D	10-2L
LEPRI 5C, OKSIN 5C, RUTIK 5C	10-2M
LEPRI 5D, OKSIN 5D, RUTIK 5D	10-2N
ABGUR 5C, BAGUS 5C, REDKA 5C	10-2P
ABGUR 5D, BAGUS 5D, REDKA 5D	10-2Q
GOBON 5C, NIBES 5C, TEGMA 5C	10-2S
GOBON 5D, NIBES 5D, TEGMA 5D	10-2T

UEEE/YKS  
YAKUTSK

  
28 DEC 18 (10-2A) Eff 3 Jan
YAKUTSK, RUSSIA  
STAR

STAR DESIGNATION	REFER TO CHART
GIMEK 2A, SORIP 2A, TUROP 2A	10-2U
GIMEK 4A, SORIP 4A	10-2V
IDESA 2A, TEKDI 2A	10-2V1
IDESA 4A, TEKDI 4A	10-2V2
AGMAT 2A, DOBUS 2A, NENAL 2A	10-2V3
AGMAT 4A, DOBUS 4A, NENAL 4A	10-2V4
BESIB 2A, KUTEG 2A, OKTUR 2A	10-2V5
BESIB 4A, KUTEG 4A, OKTUR 4A	10-2V6
DENIB 2A, DIROM 2A, OGLIS 2A	10-2W
DENIB 4A, DIROM 4A, OGLIS 4A	10-2X
LEPRI 2A, OKSIN 2A, RUTIK 2A	10-2X1
LEPRI 4A, OKSIN 4A, RUTIK 4A	10-2X2
ABGUR 2A, BAGUS 2A, REDKA 2A	10-2X3
ABGUR 4A, BAGUS 4A, REDKA 4A	10-2X4
GOBON 2A, TEGMA 2A	10-2X5
GOBON 4A, TEGMA 4A	10-2X6
LEPRI 4B, OKSIN 4B, RUTIK 4B	10-2X7
ABGUR 4B, BAGUS 4B, REDKA 4B, TEGMA 4B	10-2X8

**UEEE/YKS**  
**YAKUTSK**

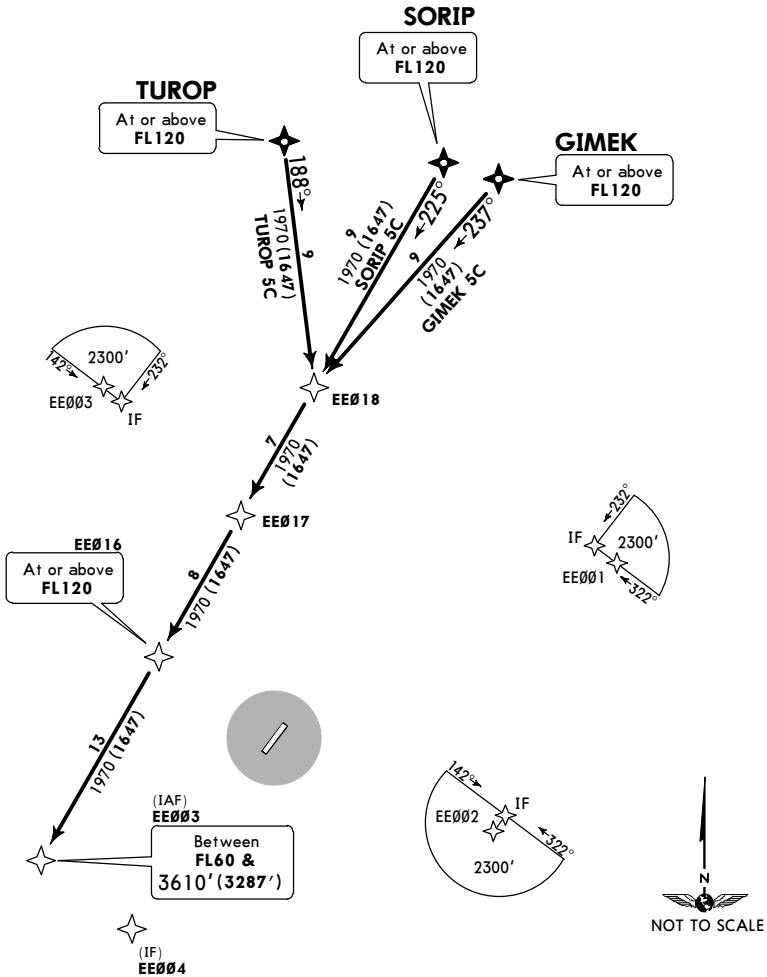
**JEPPESEN**  
28 DEC 18 **(10-2B)** Eff 3 Jan

**YAKUTSK, RUSSIA**  
**RNAV STAR**

<p>ATIS <b>126.2</b> Russian only</p>	<p>Apt Elev <b>328'</b></p>	<p>Alt Set: MM (hPa on request) QNH on request (QFE)          Trans level: FL50                            FL60 if pressure is less than 751 mm (1001.3 hPa)                            FL70 if pressure is less than 724 mm (965.3 hPa)          Trans alt: 3610' (3287')  <b>1. RNAV 1</b>  <b>2. GNSS required.</b></p>
---	---------------------------------	--

**GIMEK 5C [GIME5C]  
SORIP 5C [SORI5C]  
TUROP 5C [TURO5C]  
RWY 05R RNAV ARRIVALS**

TAA  
25 NM  
IF



ALT/HEIGHT CONVERSION  
QNH (QFE)  
**3610' (3287' - 1000m)**

**UEEE/YKS**  
**YAKUTSK**

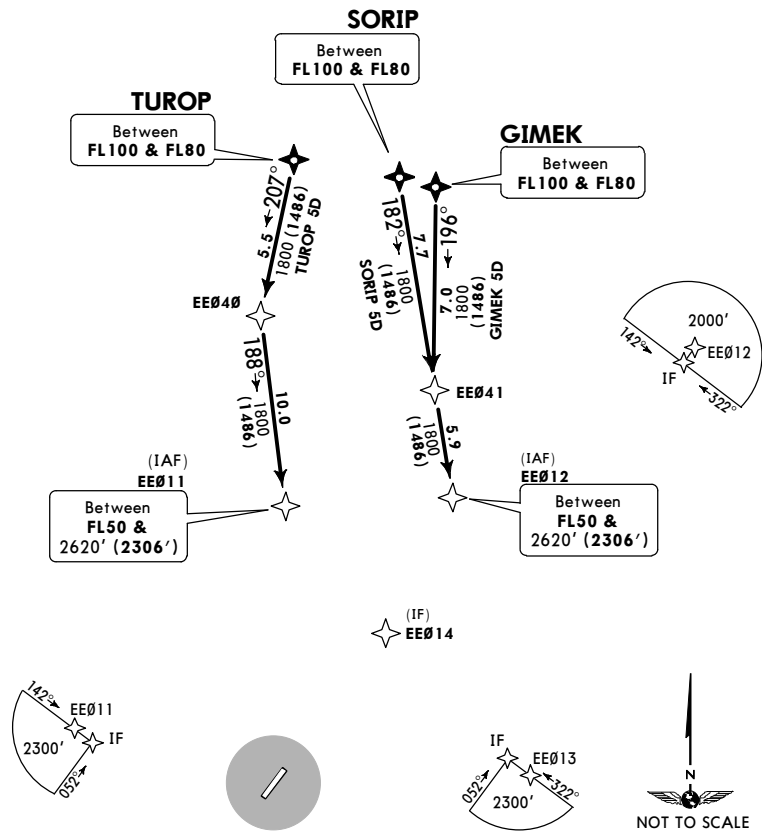
**JEPPESEN**  
28 DEC 18 **(10-2C)** Eff 3 Jan

**YAKUTSK, RUSSIA**  
**RNAV STAR**

ATIS <b>126.2</b> Russian only	Apt Elev <b>328'</b>	Alt Set: MM (hPa on request) QNH on request (QFE) Trans level: FL50 FL60 if pressure is less than 751 mm (1001.3 hPa) FL70 if pressure is less than 724 mm (965.3 hPa) Trans alt: 3610' (3296') 1. RNAV 1 2. GNS required.
--------------------------------------	-------------------------	--

**GIMEK 5D [GIME5D]**  
**SORIP 5D [SORI5D]**  
**TUROP 5D [TURO5D]**  
**RWY 23L RNAV ARRIVALS**

TAA  
25 NM  
IF



ALT/HEIGHT CONVERSION	
QNH	(QFE)
3610'	(3296' - 1000m)
2620'	(2306' - 700m)



**UEEE/YKS**  
**YAKUTSK**

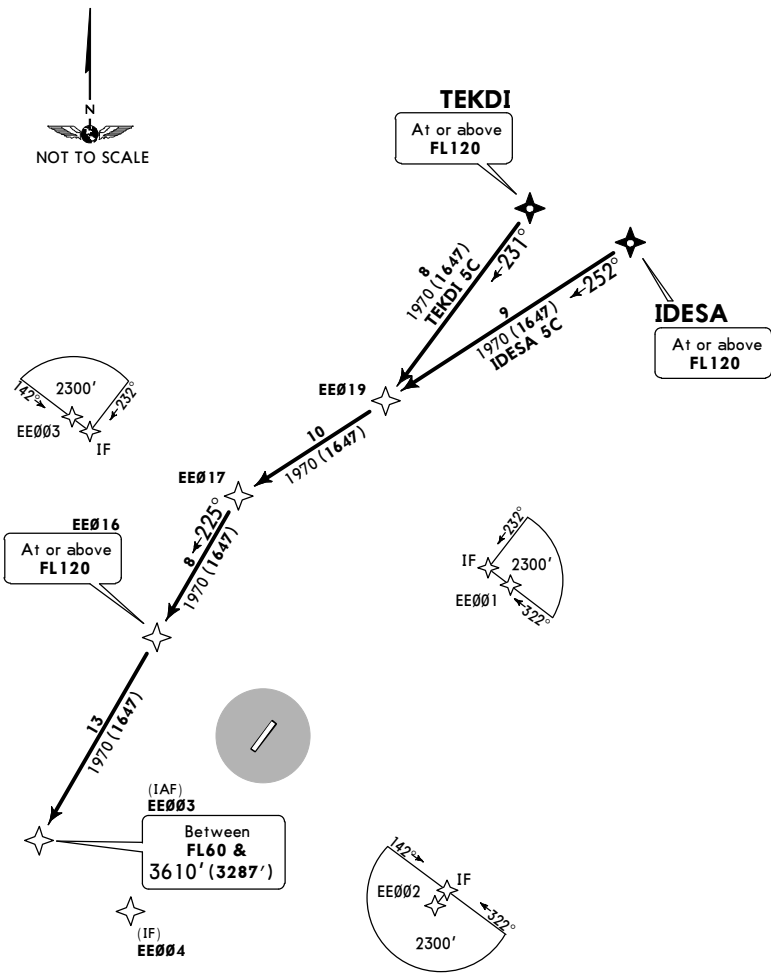
**JEPPESEN**  
28 DEC 18 **(10-2D)** Eff 3 Jan

**YAKUTSK, RUSSIA**  
**RNAV STAR**

ATIS <b>126.2</b> Russian only	Apt Elev <b>328'</b>	Alt Set: MM (hPa on request) QNH on request (QFE) Trans level: FL50 FL60 if pressure is less than 751 mm (1001.3 hPa) FL70 if pressure is less than 724 mm (965.3 hPa) Trans alt: 3610' (3287') 1. RNAV 1 2. GNSS required.
--------------------------------------	-------------------------	---

**IDESA 5C [IDES5C]**  
**TEKDI 5C [TEKD5C]**  
**RWY 05R RNAV ARRIVALS**

TAA  
25 NM  
IF



ALT/HEIGHT CONVERSION  
QNH (QFE)  
**3610' (3287' - 1000m)**

**UEEE/YKS**  
**YAKUTSK**

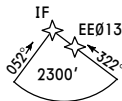
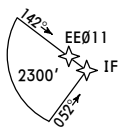
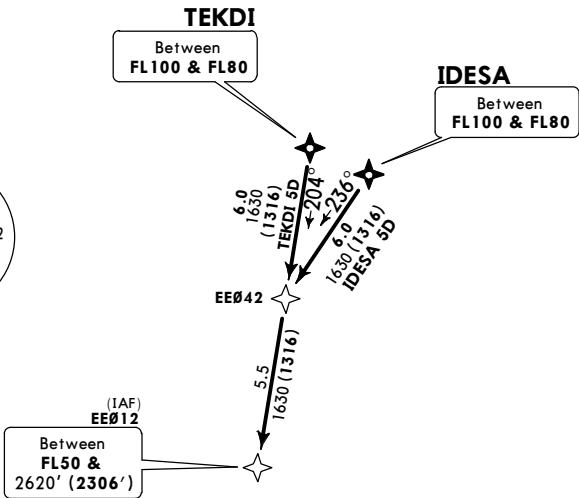
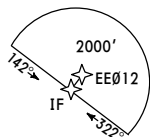
**JEPPESEN**  
28 DEC 18 **(10-2E)** Eff 3 Jan

**YAKUTSK, RUSSIA**  
**RNAV STAR**

ATIS <b>126.2</b> Russian only	Apt Elev <b>328'</b>	Alt Set: MM (hPa on request) QNH on request (QFE) Trans level: FL50 FL60 if pressure is less than 751 mm (1001.3 hPa) FL70 if pressure is less than 724 mm (965.3 hPa) Trans alt: 3610' (3296') 1. RNAV 1 2. GNSS required.
--------------------------------------	-------------------------	---

**IDESA 5D [IDES5D]**  
**TEKDI 5D [TEKD5D]**  
**RWY 23L RNAV ARRIVALS**

TAA  
25 NM  
IF



ALT/HEIGHT CONVERSION	
QNH	(QFE)
3610'	(3296' - 1000m)
2620'	(2306' - 700m)

UEEE/YKS  
YAKUTSK

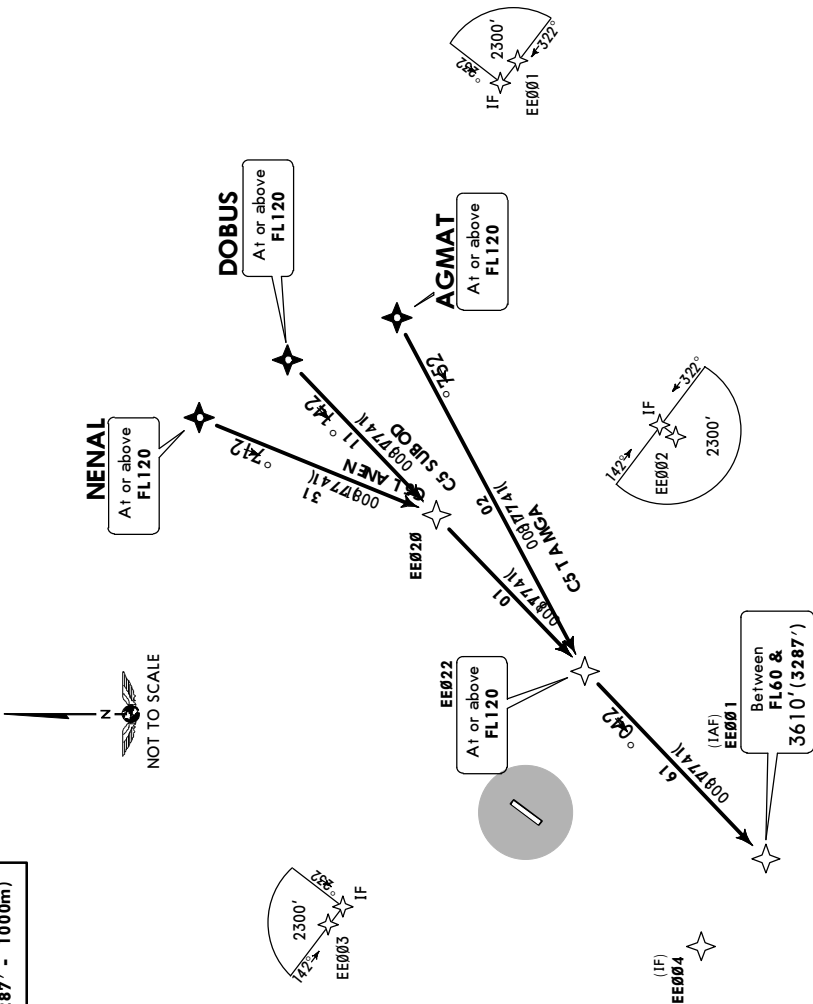
JEPPESEN  
28 DEC 18 10-2F Eff 3 Jan

YAKUTSK, RUSSIA  
RNAV STAR

ATIS 126.2 Russian only	Apt Elev 328'	Alt Set: MM (hPa on request) QNH on request (QFE) Trans level: FL50 FL60 if pressure is less than 751 mm (1001.3 hPa) FL70 if pressure is less than 724 mm (965.3 hPa) Trans alt: 3610' (3287') 1. RNAV 1 2. GNSS required.
-------------------------------	------------------	---

AGMAT 5C [AGMA5C]  
DOBUS 5C [DOBU5C]  
NENAL 5C [NENA5C]  
RWY 05R RNAV ARRIVALS

TAA 25 NM IF
--------------------



ALT/HEIGHT CONVERSION  
QNH (QFE)  
3610' (3287' - 1000m)

UEEE/YKS  
YAKUTSK

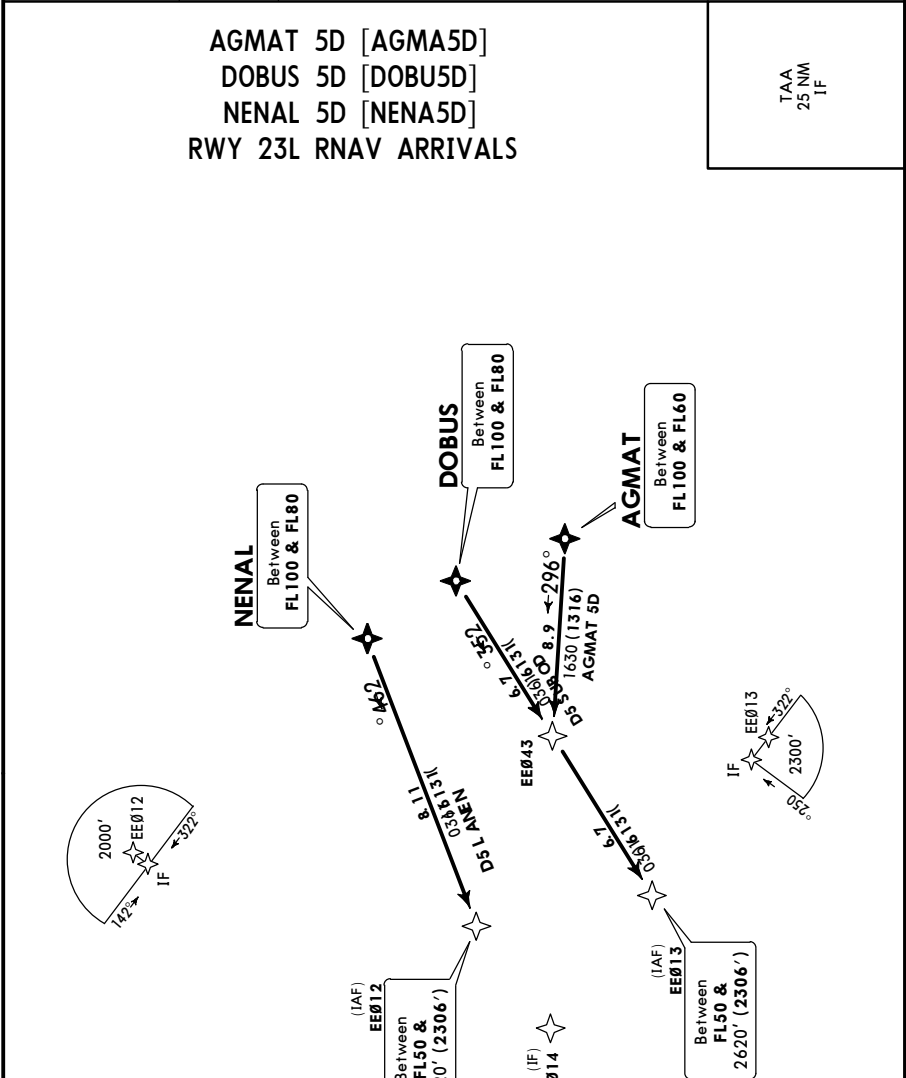
JEPESEN  
28 DEC 18 (10-2G) Eff 3 Jan

YAKUTSK, RUSSIA  
RNAV STAR

ATIS 126.2 Russian only	Apt Elev 328'	Alt Set: MM (hPa on request) QNH on request (QFE) Trans level: FL50 FL60 if pressure is less than 751 mm (1001.3 hPa) FL70 if pressure is less than 724 mm (965.3 hPa) Trans alt: 3610' (3296') 1. RNAV 1 2. GNSS required.
-------------------------------	------------------	---

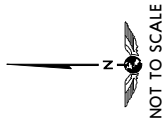
AGMAT 5D [AGMA5D]  
 DOBUS 5D [DOBU5D]  
 NENAL 5D [NENA5D]  
 RWY 23L RNAV ARRIVALS

TAA  
25 NM  
IF



ALT/HEIGHT CONVERSION

QNH	(QFE)
3610' (3296' - 1000m)	2620' (2306' - 700m)



**UEEE/YKS**  
**YAKUTSK**

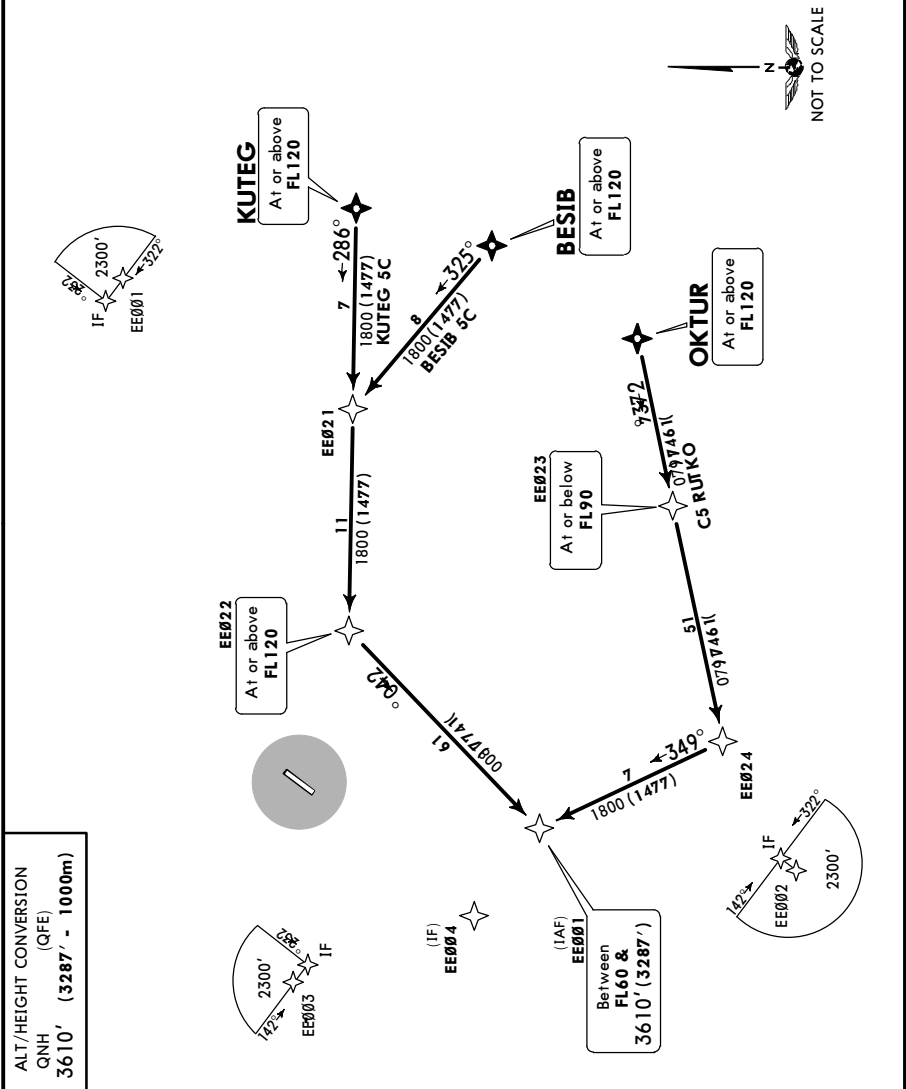
**JEPPESSEN**  
28 DEC 18 **(10-2H)** Eff 3 Jan

**YAKUTSK, RUSSIA**  
**RNAV STAR**

ATIS <b>126.2</b> Russian only	Apt Elev <b>328'</b>	Alt Set: MM (hPa on request) QNH on request (QFE) Trans level: FL50 FL60 if pressure is less than 751 mm (1001.3 hPa) FL70 if pressure is less than 724 mm (965.3 hPa) Trans alt: 3610' (3287') 1. RNAV 1 2. GNSS required.
--------------------------------------	-------------------------	---

**BESIB 5C [BESI5C]**  
**KUTEG 5C [KUTE5C]**  
**OKTUR 5C [OKTU5C]**  
**RWY 05R RNAV ARRIVALS**

TAA  
25 NM  
IF



**UEEE/YKS**  
**YAKUTSK**

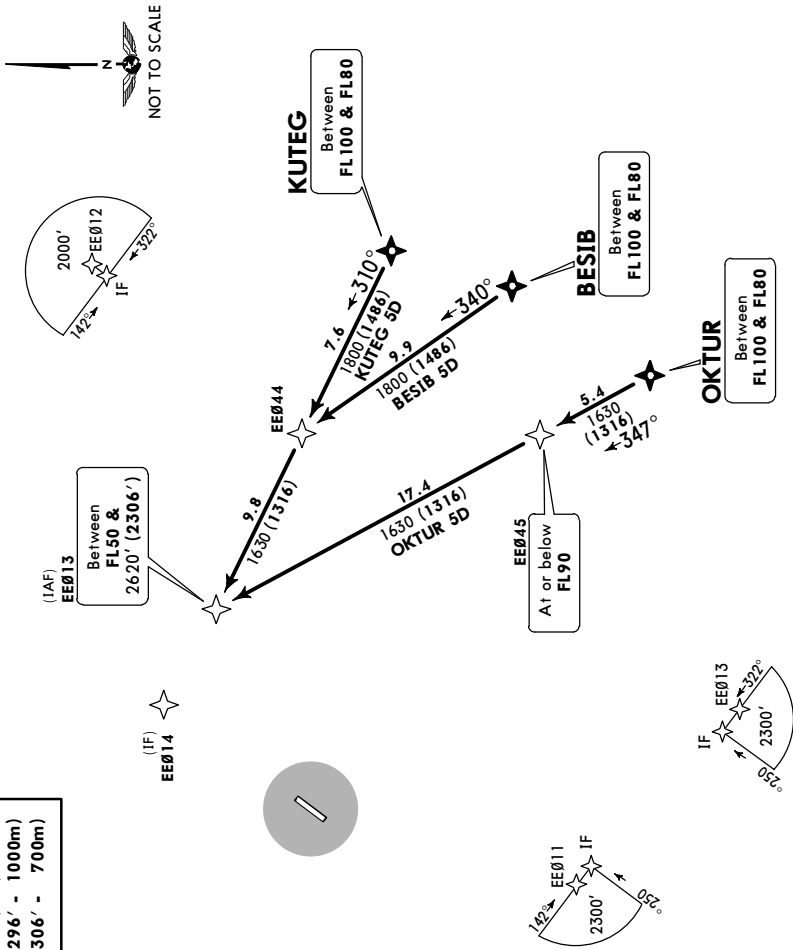
**JEPPESEN**  
28 DEC 18 **(10-2J)** Eff 3 Jan

**YAKUTSK, RUSSIA**  
**RNAV STAR**

ATIS <b>126.2</b> Russian only	Apt Elev <b>328'</b>	Alt Set: MM (hPa on request) QNH on request (QFE) Trans level: FL50 FL60 if pressure is less than 751 mm (1001.3 hPa) FL70 if pressure is less than 724 mm (965.3 hPa) Trans alt: 3610' (3296') 1. RNAV 1 2. GNSS required.
--------------------------------------	-------------------------	---

**BESIB 5D [BESI5D]**  
**KUTEG 5D [KUTE5D]**  
**OKTUR 5D [OKTU5D]**  
**RWY 23L RNAV ARRIVALS**

TAA  
25 NM  
IF



**ALT/HEIGHT CONVERSION**

QNH	(QFE)
3610' (3296' - 1000m)	
2620' (2306' - 700m)	

CHANGES: None.

**UEEE/YKS**  
**YAKUTSK**

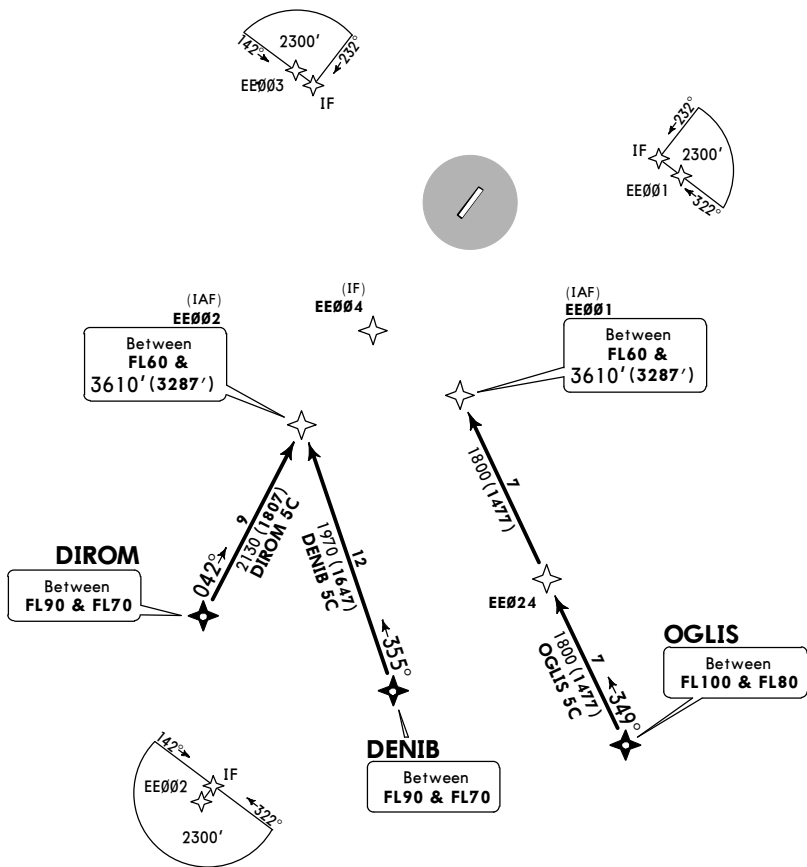
**JEPPESSEN**  
28 DEC 18 (10-2K) Eff 3 Jan

**YAKUTSK, RUSSIA**  
**RNAV STAR**

ATIS <b>126.2</b> Russian only	Apt Elev <b>328'</b>	Alt Set: MM (hPa on request) QNH on request (QFE) Trans level: FL50 FL60 if pressure is less than 751 mm (1001.3 hPa) FL70 if pressure is less than 724 mm (965.3 hPa) Trans alt: 3610' (3287') 1. RNAV 1 2. GNSS required.
--------------------------------------	-------------------------	---

**DENIB 5C [DENI5C]**  
**DIROM 5C [DIRO5C]**  
**OGLIS 5C [OGLI5C]**  
**RWY 05R RNAV ARRIVALS**

TAA  
25 NM  
IF



ALT/HEIGHT CONVERSION  
QNH (QFE)  
3610' (3287' - 1000m)

**UEEE/YKS**  
**YAKUTSK**

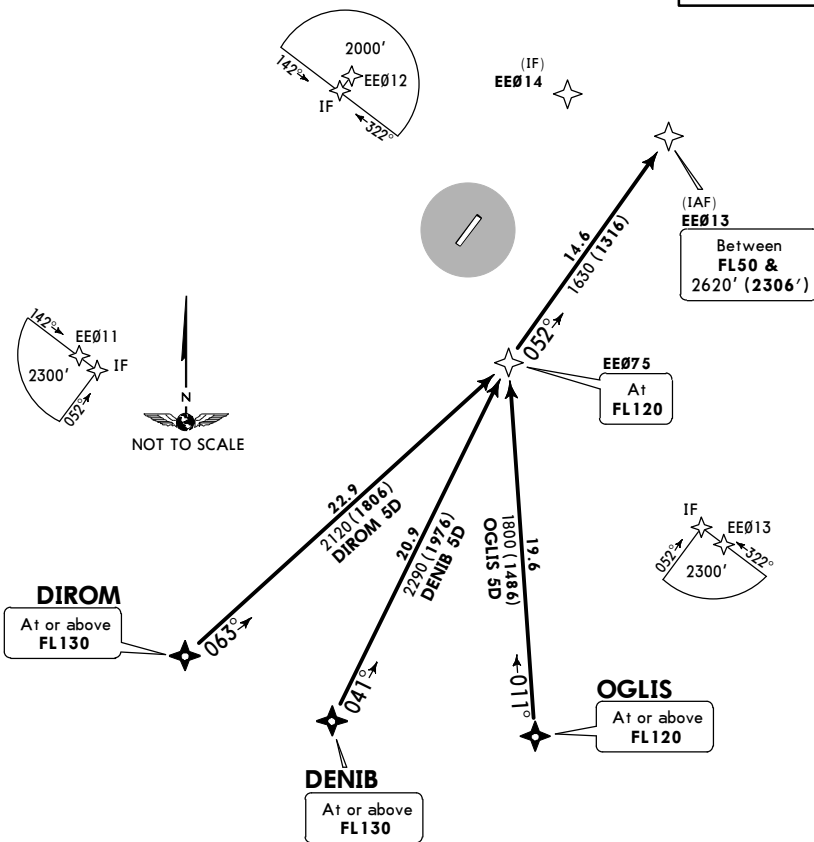
**JEPPesen**  
28 DEC 18 **(10-2L)** Eff 3 Jan

**YAKUTSK, RUSSIA**  
**RNAV STAR**

ATIS <b>126.2</b> Russian only	Apt Elev <b>328'</b>	Alt Set: MM (hPa on request) QNH on request (QFE) Trans level: FL50 FL60 if pressure is less than 751 mm (1001.3 hPa) FL70 if pressure is less than 724 mm (965.3 hPa) Trans alt: 3610' (3296') 1. <b>RNAV 1</b> 2. <b>GNSs required.</b>
--------------------------------------	-------------------------	---

**DENIB 5D [DENI5D]**  
**DIROM 5D [DIRO5D]**  
**OGLIS 5D [OGLI5D]**  
**RWY 23L RNAV ARRIVALS**

TAA  
25 NM  
IF



<b>ALT/HEIGHT CONVERSION</b>	
QNH	(QFE)
3610' (3296' - 1000m)	
2620' (2306' - 700m)	



**UEEE/YKS**  
**YAKUTSK**

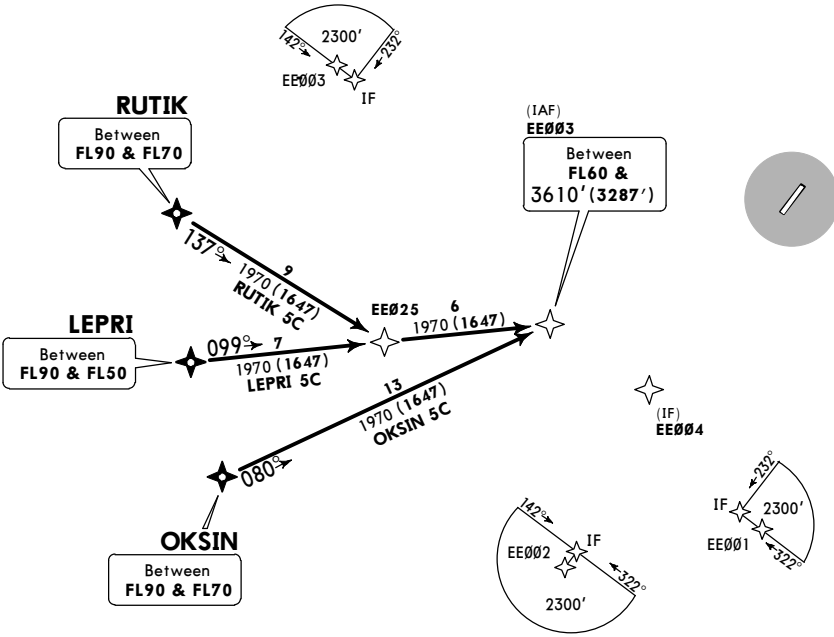
**JEPPesen**  
28 DEC 18 **(10-2M)** Eff 3 Jan

**YAKUTSK, RUSSIA**  
**RNAV STAR**

ATIS <b>126.2</b> Russian only	Apt Elev <b>328'</b>	Alt Set: MM (hPa on request) QNH on request (QFE) Trans level: FL50 FL60 if pressure is less than 751 mm (1001.3 hPa) FL70 if pressure is less than 724 mm (965.3 hPa) Trans alt: 3610' (3287') 1. RNAV 1 2. GNSS required.
--------------------------------------	-------------------------	---

**LEPRI 5C [LEPR5C]**  
**OKSIN 5C [OKSI5C]**  
**RUTIK 5C [RUTI5C]**  
**RWY 05R RNAV ARRIVALS**

TAA  
 25 NM  
 IF



ALT/HEIGHT CONVERSION  
 QNH (QFE)  
**3610' (3287' - 1000m)**

UEEE/YKS  
YAKUTSK

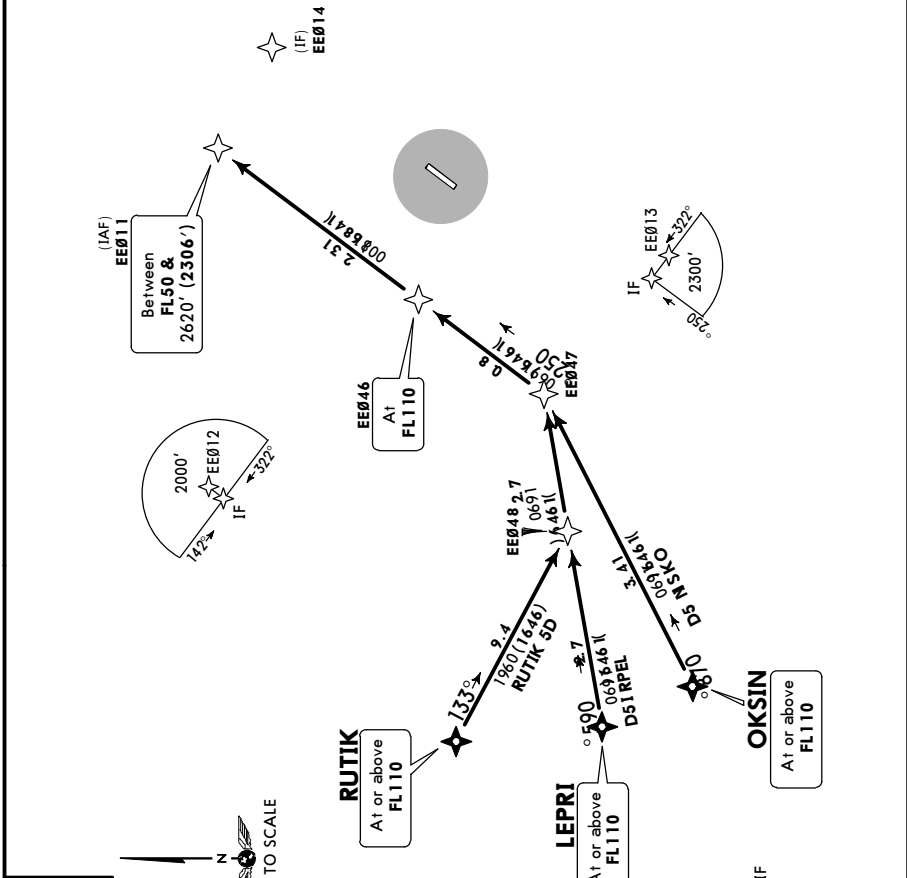
JEPPesen  
28 DEC 18 (10-2N) Eff 3 Jan

YAKUTSK, RUSSIA  
RNAV STAR

ATIS <b>126.2</b> Russian only	Apt Elev <b>328'</b>	Alt Set: MM (hPa on request) QNH on request (QFE) Trans level: FL50 FL60 if pressure is less than 751 mm (1001.3 hPa) FL70 if pressure is less than 724 mm (965.3 hPa) Trans alt: 3610' (3295') 1. RNAV 1 2. GNSS required.
--------------------------------------	-------------------------	---

LEPRI 5D [LEPR5D]  
OKSIN 5D [OKS15D]  
RUTIK 5D [RUT15D]  
RWY 23L RNAV ARRIVALS

TAA  
25 NM  
IF



ALT/HEIGHT CONVERSION (QFE)

QNH	3610' - 1000m
3296' - 1000m	
2620' - 700m	
2306' - 700m	

**UEEE/YKS**  
**YAKUTSK**

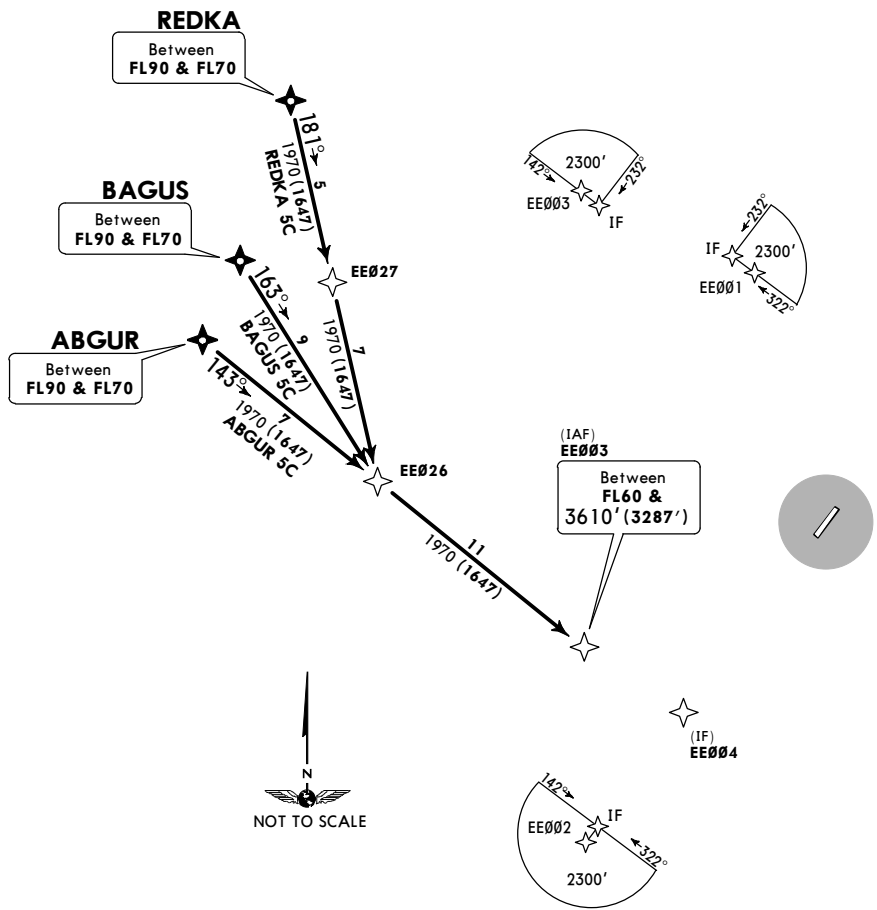
**JEPPesen**  
28 DEC 18 **(10-2P)** Eff 3 Jan

**YAKUTSK, RUSSIA**  
**RNAV STAR**

ATIS <b>126.2</b> Russian only	Apt Elev <b>328'</b>	Alt Set: MM (hPa on request) QNH on request (QFE) Trans level: FL50 FL60 if pressure is less than 751 mm (1001.3 hPa) FL70 if pressure is less than 724 mm (965.3 hPa) Trans alt: 3610' (3287') 1. RNAV 1 2. GNSS required.
--------------------------------------	-------------------------	---

**ABGUR 5C [ABGU5C]**  
**BAGUS 5C [BAGU5C]**  
**REDKA 5C [REDK5C]**  
**RWY 05R RNAV ARRIVALS**

TAA  
25 NM  
IF



ALT/HEIGHT CONVERSION	
QNH	(QFE)
<b>3610'</b>	<b>(3287' - 1000m)</b>

UEEE/YKS  
YAKUTSK

JEPPesen  
28 DEC 18 (10-2Q) Eff 3 Jan

YAKUTSK, RUSSIA  
RNAV STAR

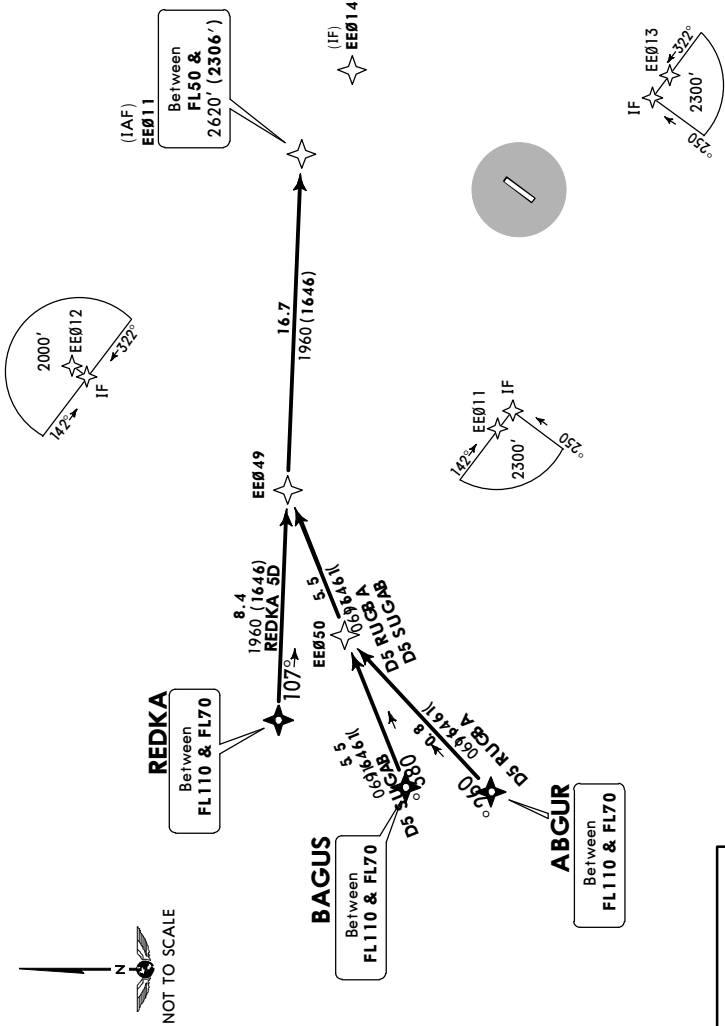
ATIS  
126.2  
Russian only

Apt Elev  
328'

Alt Set: MM (hPa on request) QNH on request (QFE)  
Trans level: FL50  
FL60 if pressure is less than 751 mm (1001.3 hPa)  
FL70 if pressure is less than 724 mm (965.3 hPa)  
Trans alt: 3610' (3296')  
1. RNAV 1  
2. GNSS required.

ABGUR 5D [ABGU5D]  
BAGUS 5D [BAGU5D]  
REDKA 5D [REDK5D]  
RWY 23L RNAV ARRIVALS

TAA  
25 NM  
IF



ALT/HEIGHT CONVERSION  
QNH (QFE)  
3610' (3296' - 1000m)  
2620' (2306' - 700m)

**UEEE/YKS**  
**YAKUTSK**

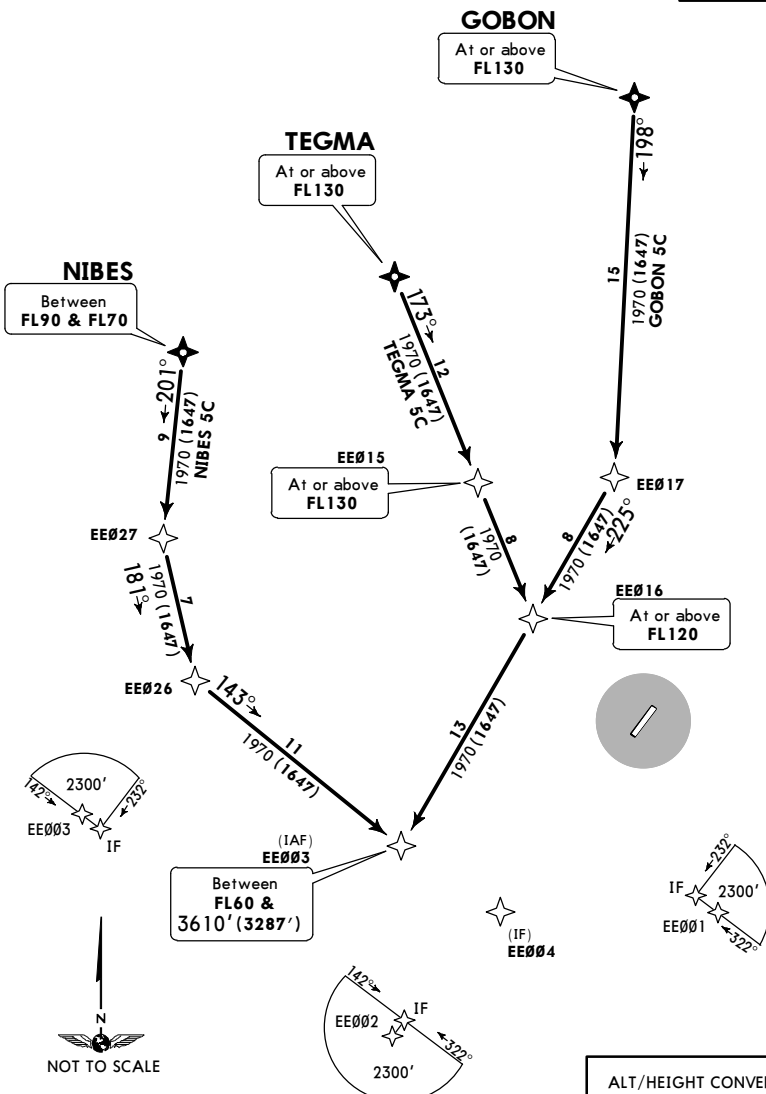
**JEPPesen**  
28 DEC 18 **(10-2S)** Eff 3 Jan

**YAKUTSK, RUSSIA**  
**RNAV STAR**

ATIS <b>126.2</b> Russian only	Apt Elev <b>328'</b>	Alt Set: MM (hPa on request) QNH on request (QFE) Trans level: FL50 FL60 if pressure is less than 751 mm (1001.3 hPa) FL70 if pressure is less than 724 mm (965.3 hPa) Trans alt: 3610' (3287') 1. RNAV 1 2. GNSS required.
--------------------------------------	-------------------------	---

**GOBON 5C [GOB05C]**  
**NIBES 5C [NIBE5C]**  
**TEGMA 5C [TEGM5C]**  
**RWY 05R RNAV ARRIVALS**

TAA  
25 NM  
IF



ALT/HEIGHT CONVERSION  
QNH (QFE)  
**3610' (3287' - 1000m)**

**UEEE/YKS**  
**YAKUTSK**

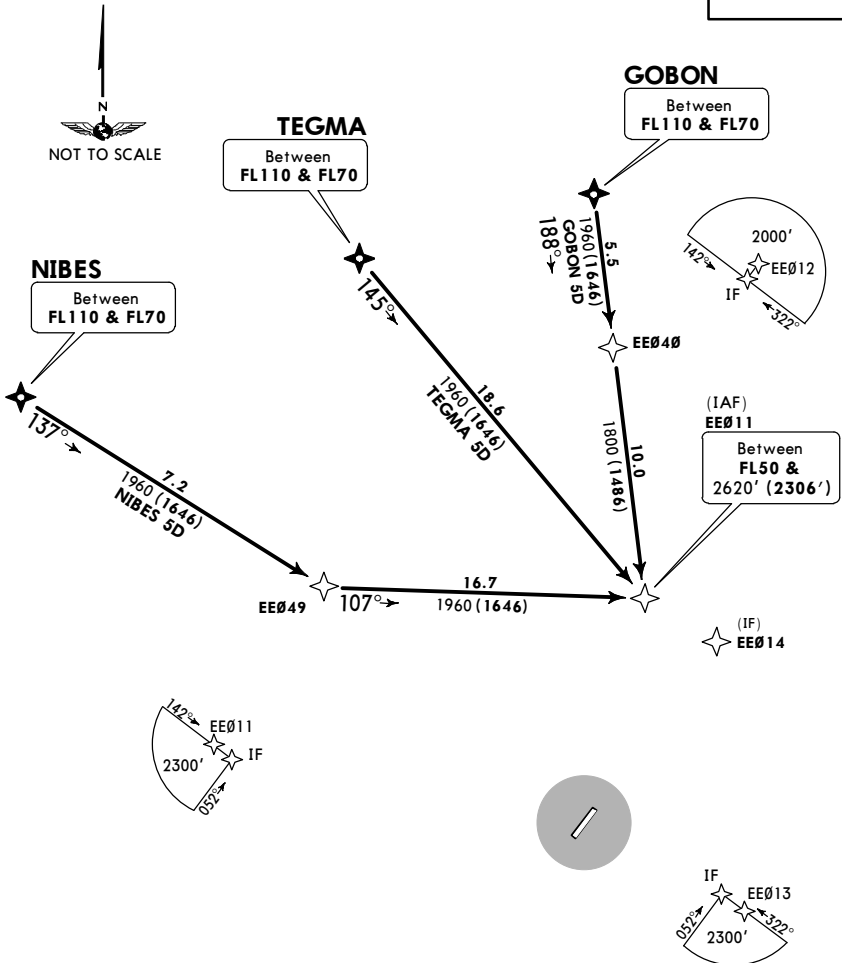
**JEPPesen**  
28 DEC 18 **(10-2T)** Eff 3 Jan

**YAKUTSK, RUSSIA**  
**RNAV STAR**

ATIS <b>126.2</b> Russian only	Apt Elev <b>328'</b>	Alt Set: MM (hPa on request) QNH on request (QFE) Trans level: FL50 FL60 if pressure is less than 751 mm (1001.3 hPa) FL70 if pressure is less than 724 mm (965.3 hPa) Trans alt: 3610' (3296') 1. RNAV 1 2. GNSS required.
--------------------------------------	-------------------------	---

**GOBON 5D [GOB05D]**  
**NIBES 5D [NIBE5D]**  
**TEGMA 5D [TEGM5D]**  
**RWY 23L RNAV ARRIVALS**

**TAA**  
**25 NM**  
**IF**



ALT/HEIGHT CONVERSION	
QNH	(QFE)
3610'	(3296' - 1000m)
2620'	(2306' - 700m)

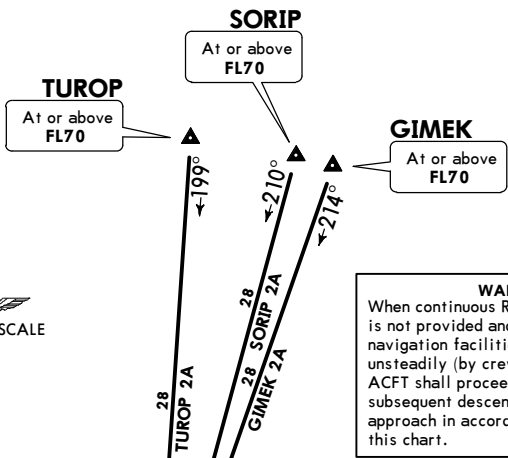
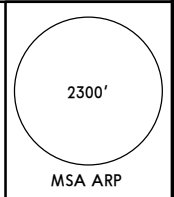
**UEEE/YKS**  
**YAKUTSK**

**JEPPesen**  
16 NOV 18 **(10-2U)**

**YAKUTSK, RUSSIA**  
**STAR**

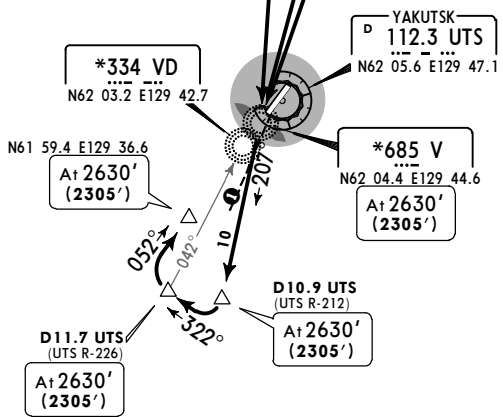
ATIS <b>126.2</b> Russian only	Apt Elev <b>328'</b>	Alt Set: MM (hPa on request) QNH on request (QFE) Trans level: FL50 FL60 if pressure is less than 751 mm (1001.3 hPa) FL70 if pressure is less than 724 mm (965.3 hPa) Trans alt: 3610' (3285')
--------------------------------------	-------------------------	---

**GIMEK 2A [GIME2A]**  
**SORIP 2A [SORI2A]**  
**TUROP 2A [TURO2A]**  
**RWY 05R ARRIVALS**



**WARNING**  
When continuous RADAR control is not provided and onboard navigation facilities operate unsteadily (by crew's report) ACFT shall proceed to V with subsequent descent and approach in accordance with this chart.

**1** 038° to ARP within 4.3 NM do not fly EAST below 2300' (1975').



**HOLDING OVER VD**

Altitudes and heights by ATC, but not below MNM SECT height.  
IAS for ACFT:  
- CAT A: 130 KT  
- CAT B: 175 KT  
- CAT C & D: 270 KT

**ALT/HEIGHT CONVERSION**

QNH	(QFE)
3610'	(3285' - 1000m)
2630'	(2305' - 700m)
2300'	(1975' - 600m)

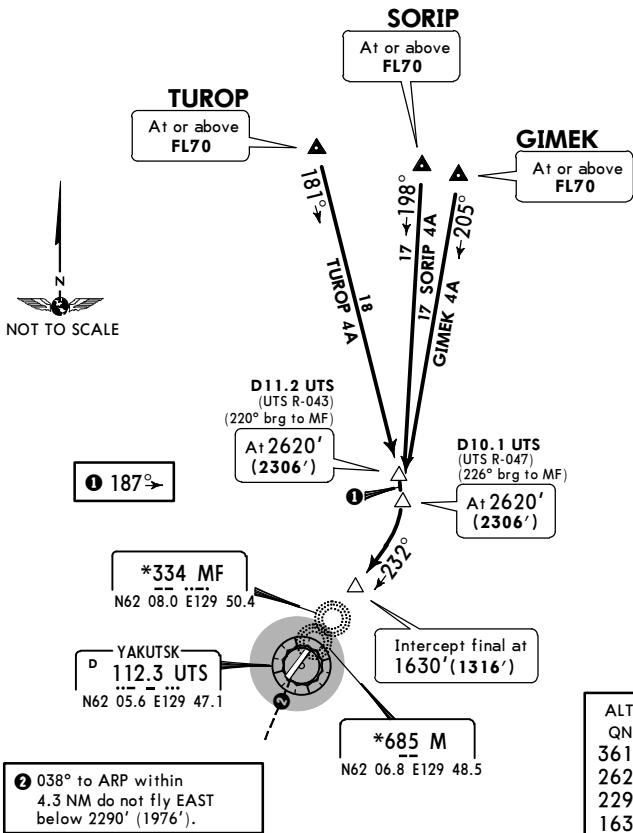
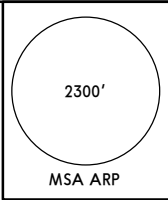
**UEEE/YKS**  
**YAKUTSK**

**JEPPesen**  
16 NOV 18 **(10-2V)**

**YAKUTSK, RUSSIA**  
**STAR**

ATIS <b>126.2</b> Russian only	Apt Elev <b>328'</b>	Alt Set: MM (hPa on request) QNH on request (QFE) Trans level: FL50 FL60 if pressure is less than 751 mm (1001.3 hPa) FL70 if pressure is less than 724 mm (965.3 hPa) Trans alt: 3610' (3296')
--------------------------------------	-------------------------	---

**GIMEK 4A [GIME4A]**  
**SORIP 4A [SORI4A]**  
**TUROP 4A [TURO4A]**  
**RWY 23L ARRIVALS**



ALT/HEIGHT CONVERSION	
QNH	(QFE)
3610'	(3296' - 1000m)
2620'	(2306' - 700m)
2290'	(1976' - 600m)
1630'	(1316' - 400m)

**WARNING**  
When continuous RADAR control is not provided and onboard navigation facilities operate unsteadily (by crew's report) ACFT shall proceed to M with subsequent descent and approach in accordance with this chart.

**HOLDING OVER MF**

Altitudes and heights by ATC, but not below MNM SECT height.  
IAS for ACFT:  
- CAT A: 130 KT  
- CAT B: 175 KT  
- CAT C & D: 270 KT



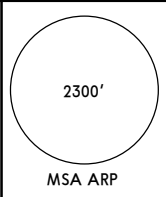
**UEEE/YKS**  
**YAKUTSK**

**JEPPESSEN**  
16 NOV 18 (10-2V1)

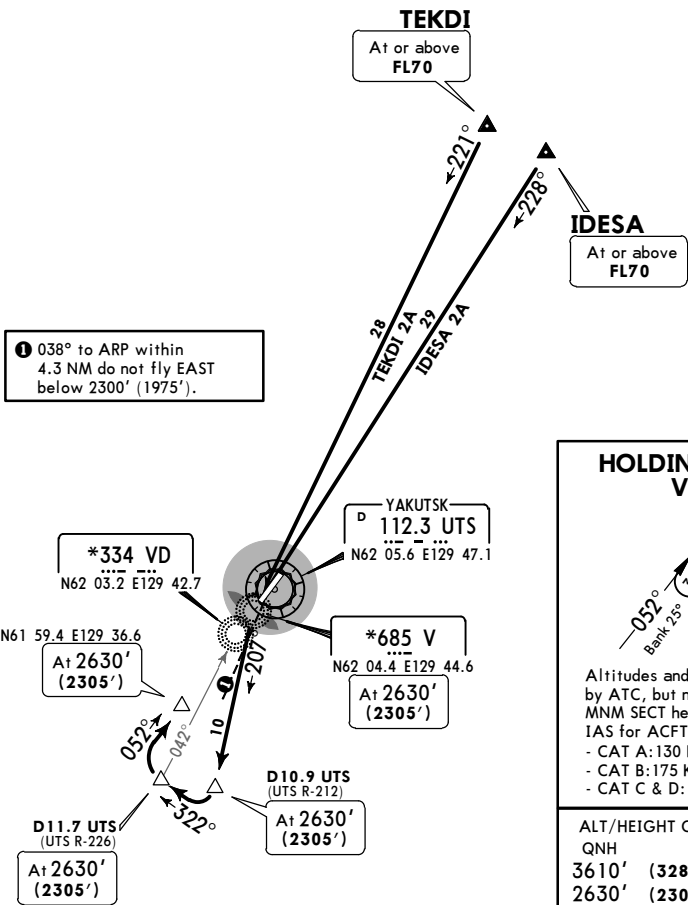
**YAKUTSK, RUSSIA**  
**STAR**

ATIS <b>126.2</b> Russian only	Apt Elev <b>328'</b>	Alt Set: MM (hPa on request) QNH on request (QFE) Trans level: FL50 FL60 if pressure is less than 751 mm (1001.3 hPa) FL70 if pressure is less than 724 mm (965.3 hPa) Trans alt: 3610' (3285')
--------------------------------------	-------------------------	---

**IDESA 2A [IDES2A]**  
**TEKDI 2A [TEKD2A]**  
**RWY 05R ARRIVALS**



**WARNING**  
When continuous RADAR control is not provided and onboard navigation facilities operate unsteadily (by crew's report) ACFT shall proceed to V with subsequent descent and approach in accordance with this chart.



**UEEE/YKS**  
**YAKUTSK**

**JEPPESSEN**

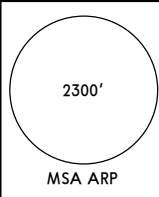
**YAKUTSK, RUSSIA**

16 NOV 18 (10-2V2)

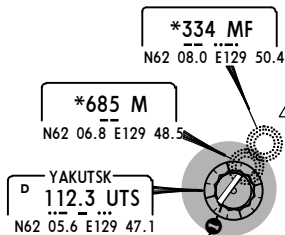
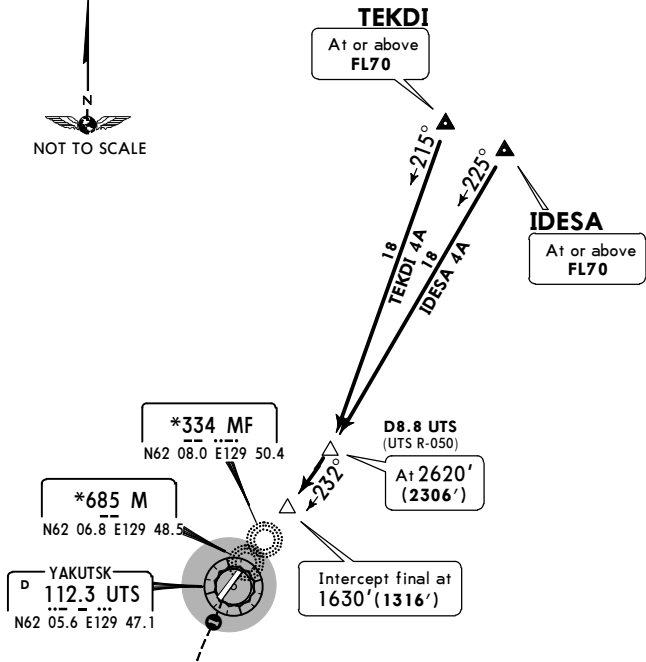
**STAR**

ATIS <b>126.2</b> Russian only	Apt Elev <b>328'</b>	Alt Set: MM (hPa on request) QNH on request (QFE) Trans level: FL50 FL60 if pressure is less than 751 mm (1001.3 hPa) FL70 if pressure is less than 724 mm (965.3 hPa) Trans alt: 3610' (3296')
--------------------------------------	-------------------------	---

**IDESA 4A [IDES4A]**  
**TEKDI 4A [TEKD4A]**  
**RWY 23L ARRIVALS**



**WARNING**  
When continuous RADAR control is not provided and onboard navigation facilities operate unsteadily (by crew's report) ACFT shall proceed to M with subsequent descent and approach in accordance with this chart.



**1** 038° to ARP within 4.3 NM do not fly EAST below 2290' (1976').

**HOLDING OVER MF**



Altitudes and heights by ATC, but not below MNM SECT height.  
IAS for ACFT:  
- CAT A: 130 KT  
- CAT B: 175 KT  
- CAT C & D: 270 KT

ALT/HEIGHT CONVERSION	QNH	(QFE)
3610'	(3296' - 1000m)	
2620'	(2306' - 700m)	
2290'	(1976' - 600m)	
1630'	(1316' - 400m)	

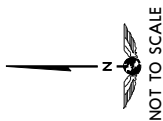
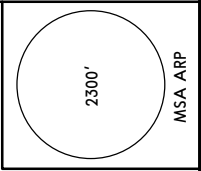
**UEEE/YKS**  
**YAKUTSK**

**JEPPesen**  
16 NOV 18 **(10-2V3)**

**YAKUTSK, RUSSIA**  
**STAR**

ATIS <b>126.2</b> Russian only	Apt Elev <b>328'</b>	Alt Set: MM (hPa on request) QNH on request (QFE) Trans level: FL50 FL60 if pressure is less than 751 mm (1001.3 hPa) FL70 if pressure is less than 724 mm (965.3 hPa) Trans alt: 3610' (3285')
--------------------------------------	-------------------------	---

**AGMAT 2A [AGMA2A]**  
**DOBUS 2A [DOBU2A]**  
**NENAL 2A [NENA2A]**  
**RWY 05R ARRIVALS**



**WARNING**  
When continuous RADAR control is not provided and onboard navigation facilities operate unsteadily (by crew's report) ACFT shall proceed to V with subsequent descent and approach in accordance with this chart.

**HOLDING OVER VD**

Altitudes and heights by ATC, but not below MNM SECT height.  
IAS for ACFT:  
- CAT A: 130 KT  
- CAT B: 175 KT  
- CAT C & D: 270 KT

30°  
180°  
050°  
322°

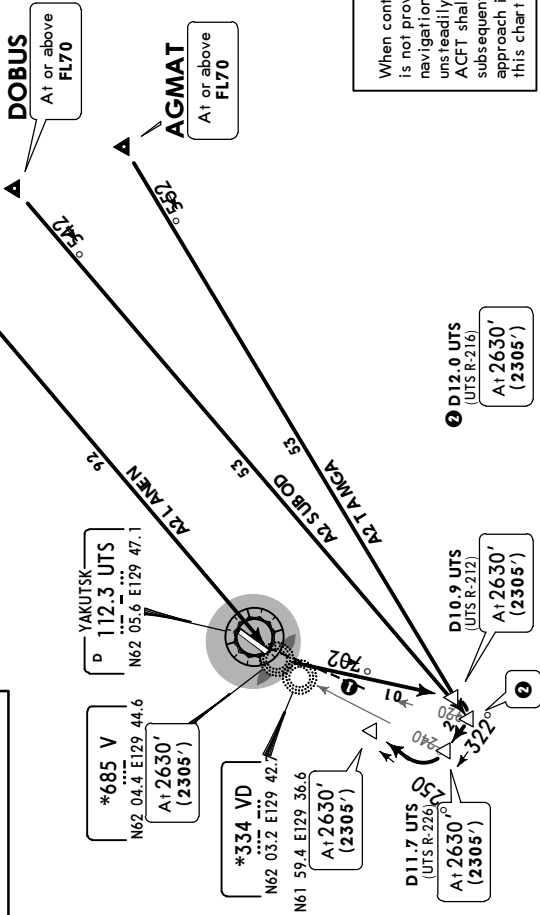
**ALT/HEIGHT CONVERSION**  
(QFE)  
QNH  
3610' (3285' - 1000m)  
2630' (2305' - 700m)  
2300' (1975' - 600m)

① 038° to ARP within 4.3 NM do not fly EAST below 2300' (1975').

\*685 V N62 04.4 E129 44.6  
A1 2630' (2305')

\*334 VD N62 03.2 E129 42.7  
A1 2630' (2305')

N61 59.4 E129 36.6  
A1 2630' (2305')



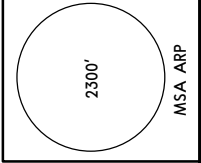
UEEE/YKS  
YAKUTSK

16 NOV 18 **(10-2V4)**

YAKUTSK, RUSSIA  
**STAR**

ATIS <b>126.2</b> Russian only	Apt Elev <b>328'</b>	Alt Set: MM (hPa on request) QNH on request (QFE) Trans level: FL50 FL60 if pressure is less than 751 mm (1001.3 hPa) FL70 if pressure is less than 724 mm (965.3 hPa) Trans alt: 3610' (3296')
--------------------------------------	-------------------------	---

**AGMAT 4A [AGMA4A]**  
**DOBUS 4A [DOBU4A]**  
**NENAL 4A [NENA4A]**  
**RWY 23L ARRIVALS**



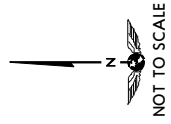
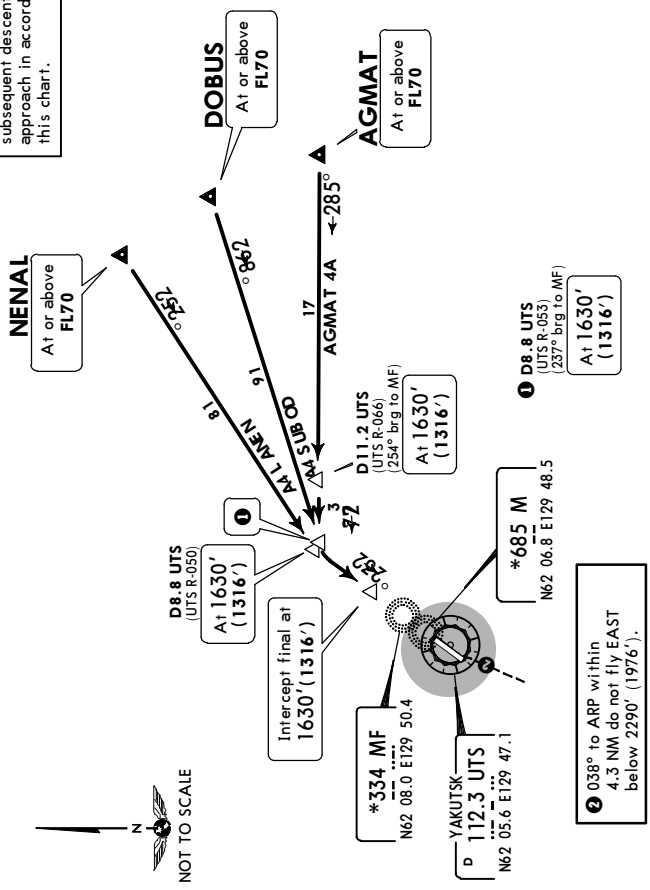
**WARNING**  
 When continuous RADAR control is not provided and onboard navigation facilities operate unsteadily (by crew's report) ACFT shall proceed to M with subsequent descent and approach in accordance with this chart.

**ALT/HEIGHT CONVERSION**

QNH	(QFE)
3610'	(3296' - 1000m)
2290'	(1976' - 600m)
1630'	(1316' - 400m)

**HOLDING OVER MF**

Altitudes and heights by ATC, but not below MNM SECT height.  
 IAS for ACFT:  
 - CAT A: 130 KT  
 - CAT B: 175 KT  
 - CAT C & D: 270 KT



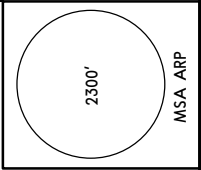
**UEEE/YKS**  
**YAKUTSK**

**JEPPesen**  
16 NOV 18 **(10-2V5)**

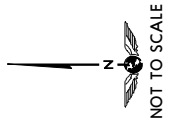
**YAKUTSK, RUSSIA**  
**STAR**

ATIS <b>126.2</b> Russian only	Apt Elev <b>328'</b>	Alt Set: MM (hPa on request) QNH on request (QFE) Trans level: FL50 FL60 if pressure is less than 751 mm (1001.3 hPa) FL70 if pressure is less than 724 mm (965.3 hPa) Trans alt: 3610' (3285')
--------------------------------------	-------------------------	---

**BESIB 2A [BESI2A]**  
**KUTEG 2A [KUTE2A]**  
**OKTUR 2A [OKTU2A]**  
**RWY 05R ARRIVALS**



**WARNING**  
When continuous RADAR control is not provided and onboard navigation facilities operate unsteadily (by crew's report) ACFT shall proceed to V with subsequent descent and approach in accordance with this chart.



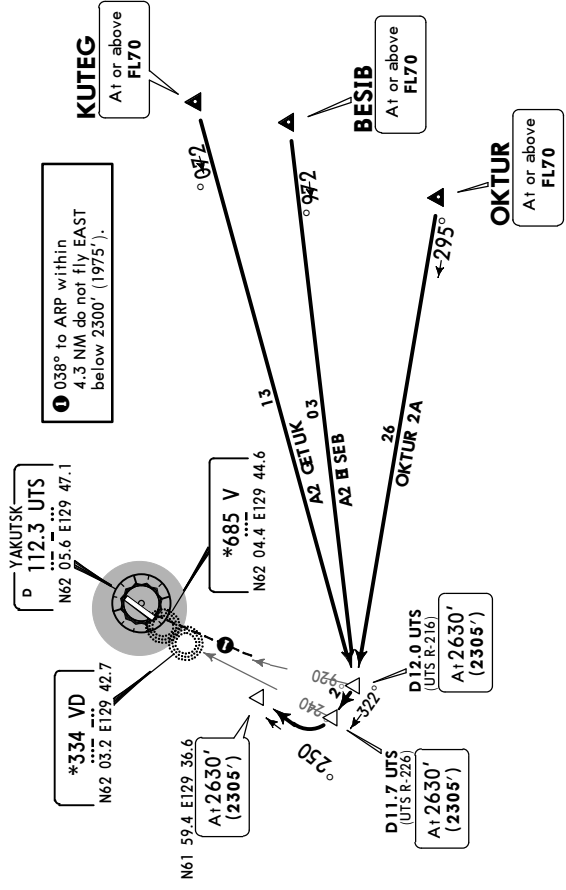
**ALT/HEIGHT CONVERSION**  
(QFE)

QNH	3610' (3285' - 1000m)
	2630' (2305' - 700m)
	2300' (1975' - 600m)

**HOLDING OVER VD**

Altitudes and heights by ATC, but not below MNM SECT height.  
IAS for ACFT:  
- CAT A: 130 KT  
- CAT B: 175 KT  
- CAT C & D: 270 KT

**0** 038° to ARP within 4.3 NM do not fly EAST below 2300' (1975').



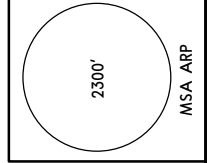
**UEEE/YKS**  
**YAKUTSK**

**JEPPesen**  
16 NOV 18 **(10-2V6)**

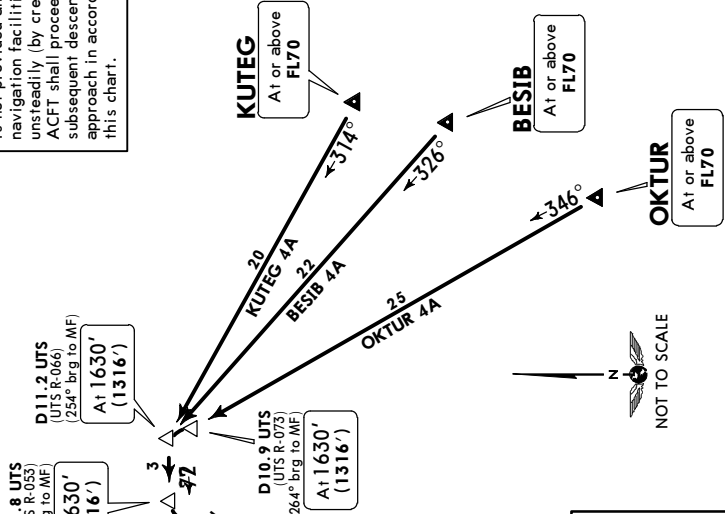
**YAKUTSK, RUSSIA**  
**STAR**

ATIS <b>126.2</b> Russian only	Apt Elev <b>328'</b>	Alt Set: MM (hPa on request) QNH on request (QFE) Trans level: FL50 FL60 if pressure is less than 751 mm (1001.3 hPa) FL70 if pressure is less than 724 mm (965.3 hPa) Trans alt: 3610' (3296')
--------------------------------------	-------------------------	---

**BESIB 4A [BESI4A]**  
**KUTEG 4A [KUTE4A]**  
**OKTUR 4A [OKTU4A]**  
**RWY 23L ARRIVALS**



**WARNING**  
When continuous RADAR control is not provided and onboard navigation facilities operate unsteadily (by crew's report) ACFT shall proceed to M with subsequent descent and approach in accordance with this chart.



**ALT/HEIGHT CONVERSION**

QNH	(QFE)
3610' (3296' - 1000m)	
2290' (1976' - 600m)	
1630' (1316' - 400m)	

**HOLDING OVER MF**  
Altitudes and heights by ATC, but not below MINM SECT height.  
IAS for ACFT:  
- CAT A: 130 KT  
- CAT B: 175 KT  
- CAT C & D: 270 KT

**1** 038° to ARP within 4.3 NM do not fly EAST below 2290' (1976').

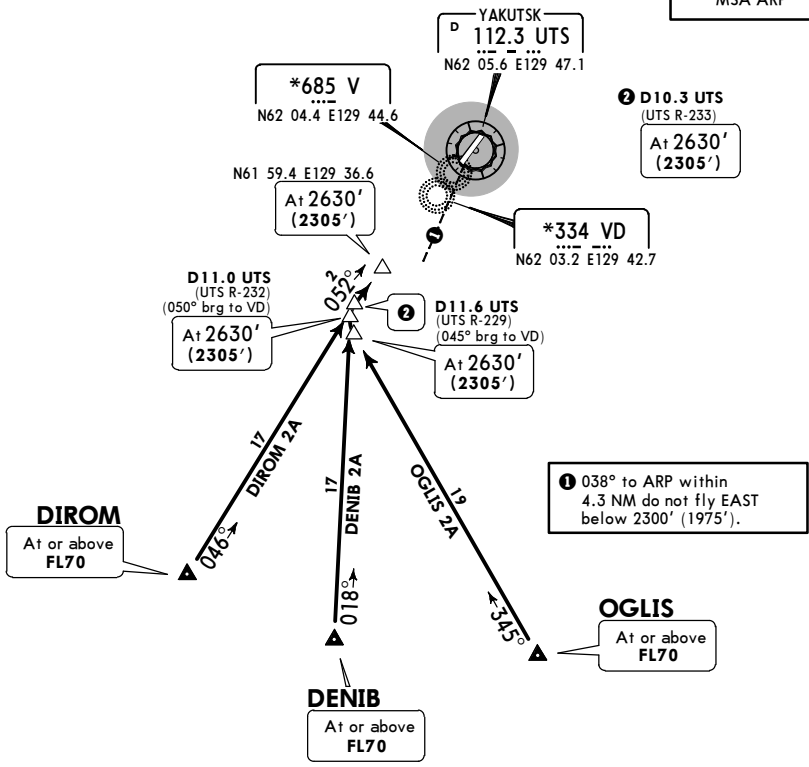
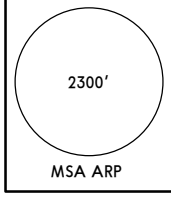
UEEE/YKS  
YAKUTSK

JEPPesen  
16 NOV 18 (10-2W)

YAKUTSK, RUSSIA  
STAR

ATIS <b>126.2</b> Russian only	Apt Elev <b>328'</b>	Alt Set: MM (hPa on request) QNH on request (QFE) Trans level: FL50 FL60 if pressure is less than 751 mm (1001.3 hPa) FL70 if pressure is less than 724 mm (965.3 hPa) Trans alt: 3610' (3285')
--------------------------------------	-------------------------	---

DENIB 2A [DENI2A]  
DIROM 2A [DIRO2A]  
OGLIS 2A [OGLI2A]  
RWY 05R ARRIVALS



**HOLDING OVER VD**

Altitudes and heights by ATC, but not below MNM SECT height.  
IAS for ACFT:  
- CAT A: 130 KT  
- CAT B: 175 KT  
- CAT C & D: 270 KT

**WARNING**  
When continuous RADAR control is not provided and onboard navigation facilities operate unsteadily (by crew's report) ACFT shall proceed to V with subsequent descent and approach in accordance with this chart.

**ALT/HEIGHT CONVERSION**

QNH	(QFE)
3610'	(3285' - 1000m)
2630'	(2305' - 700m)
2300'	(1975' - 600m)



UEEE/YKS  
YAKUTSK

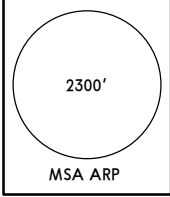
JEPPesen  
16 NOV 18 (10-2X)

YAKUTSK, RUSSIA  
STAR

ATIS  
**126.2**  
Russian only

Alt Set: MM (hPa on request) QNH on request (QFE)  
Trans level: FL50  
FL60 if pressure is less than 751 mm (1001.3 hPa)  
FL70 if pressure is less than 724 mm (965.3 hPa)  
Trans alt: 3610' (3296')

DENIB 4A [DENI4A]  
DIROM 4A [DIRO4A]  
OGLIS 4A [OGLI4A]  
RWY 23L ARRIVALS



**1**  
\*334 MF  
N62 08.0 E129 50.4

**2** 038° to ARP within  
4.3 NM do not fly EAST  
below 2290' (1976').

\*685 M  
N62 06.8 E129 48.5

YAKUTSK  
D 112.3 UTS  
N62 05.6 E129 47.1

D8.8 UTS  
(UTS R-053)  
(237° brg to MF)  
At 1630'  
(1316')

D10.9 UTS  
(UTS R-073)  
(264° brg to MF)  
At 1630'  
(1316')

D10.4 UTS  
(UTS R-075)  
(266° brg to MF)  
At 1630'  
(1316')

**3** D4.9 UTS  
(UTS R-105)  
At 2620'  
(2306')

**WARNING**  
When continuous RADAR control  
is not provided and onboard  
navigation facilities operate  
unsteadily (by crew's report)  
ACFT shall proceed to M with  
subsequent descent and  
approach in accordance with  
this chart.

**DIROM**  
At or above  
FL70

**DENIB**  
At or above  
FL70

**OGLIS**  
At or above  
FL70



**HOLDING OVER MF**



Altitudes and heights  
by ATC, but not below  
MNM SECT height.  
IAS for ACFT:  
- CAT A: 130 KT  
- CAT B: 175 KT  
- CAT C & D: 270 KT

ALT/HEIGHT CONVERSION	QNH	(QFE)
3610'	(3296' - 1000m)	
2620'	(2306' - 700m)	
2290'	(1976' - 600m)	
1630'	(1316' - 400m)	



**UEEE/YKS**  
**YAKUTSK**

**JEPPesen**

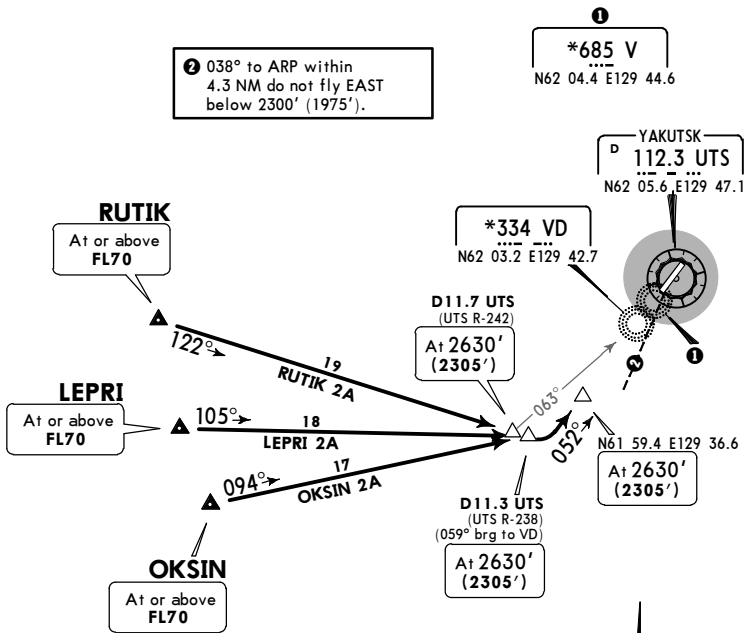
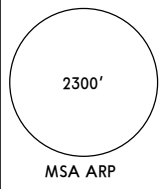
**YAKUTSK, RUSSIA**

16 NOV 18 (10-2X1)

**STAR**

ATIS <b>126.2</b> Russian only	Apt Elev <b>328'</b>	Alt Set: MM (hPa on request) QNH on request (QFE) Trans level: FL50 FL60 if pressure is less than 751 mm (1001.3 hPa) FL70 if pressure is less than 724 mm (965.3 hPa) Trans alt: 3610' (3285')
--------------------------------------	-------------------------	---

**LEPRI 2A [LEPR2A]**  
**OKSIN 2A [OKSI2A]**  
**RUTIK 2A [RUTI2A]**  
**RWY 05R ARRIVALS**



② 038° to ARP within 4.3 NM do not fly EAST below 2300' (1975').

**\*685 V**  
N62 04.4 E129 44.6

**YAKUTSK**  
**112.3 UTS**  
N62 05.6 E129 47.1

**\*334 VD**  
N62 03.2 E129 42.7

**D11.7 UTS**  
(UTS R-242)  
At 2630'  
(2305')

**D11.3 UTS**  
(UTS R-238)  
(059° brg to VD)  
At 2630'  
(2305')

**At 2630'**  
**(2305')**



**HOLDING OVER VD**

Altitudes and heights by ATC, but not below MNM SECT height.  
IAS for ACFT:  
- CAT A: 130 KT  
- CAT B: 175 KT  
- CAT C & D: 270 KT

**WARNING**  
When continuous RADAR control is not provided and onboard navigation facilities operate unsteadily (by crew's report) ACFT shall proceed to V with subsequent descent and approach in accordance with this chart.

**ALT/HEIGHT CONVERSION**

QNH	(QFE)
3610'	(3285' - 1000m)
2630'	(2305' - 700m)
2300'	(1975' - 600m)

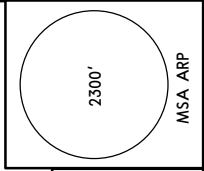
UEEE/YKS  
YAKUTSK

JEPPesen  
16 NOV 18 (10-2X2)

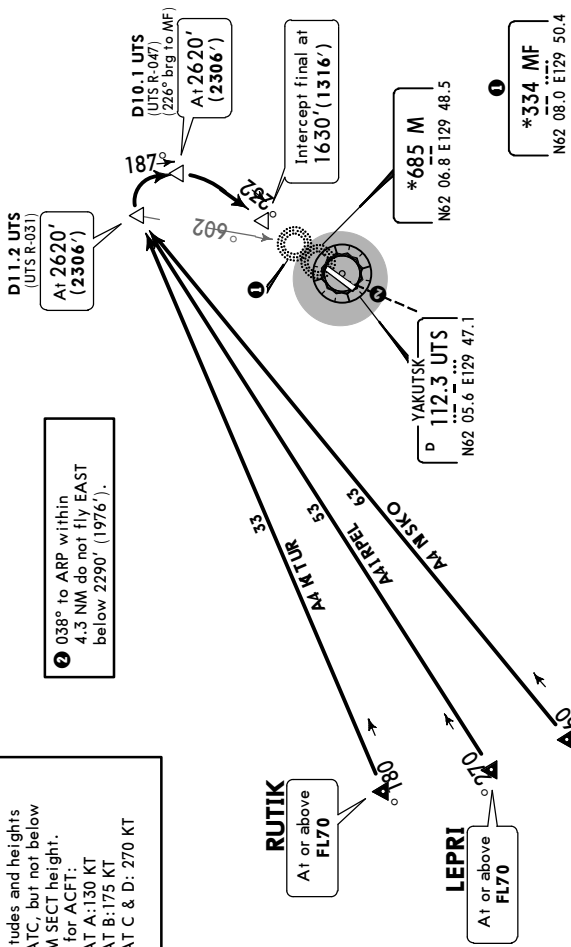
YAKUTSK, RUSSIA  
STAR

ATIS <b>126.2</b> Russian only	Apt Elev <b>328'</b>	Alt Set: MM (hPa on request) QNH on request (QFE) Trans level: FL50 FL60 if pressure is less than 751 mm (1001.3 hPa) FL70 if pressure is less than 724 mm (965.3 hPa) Trans alt: 3610' (3296')
--------------------------------------	-------------------------	---

LEPRI 4A [LEPR4A]  
OKSIN 4A [OKS14A]  
RUTIK 4A [RUT14A]  
RWY 23L ARRIVALS



ALT/HEIGHT CONVERSION (QFE)	
QNH	3610' (3296' - 1000m)
	2620' (2306' - 700m)
	2290' (1976' - 600m)
	1630' (1316' - 400m)



② 038° to ARP within 4.3 NM do not fly EAST below 2290' (1976').

**WARNING**  
When continuous RADAR control is not provided and onboard navigation facilities operate unsteadily (by crew's report) ACFT shall proceed to M with subsequent descent and approach in accordance with this chart.

**HOLDING OVER MF**  
Altitudes and heights by ATC, but not below MINM SECT height.  
IAS for ACFT:  
- CAT A: 130 KT  
- CAT B: 175 KT  
- CAT C & D: 270 KT



**UEEE/YKS**  
**YAKUTSK**

**JEPPesen**

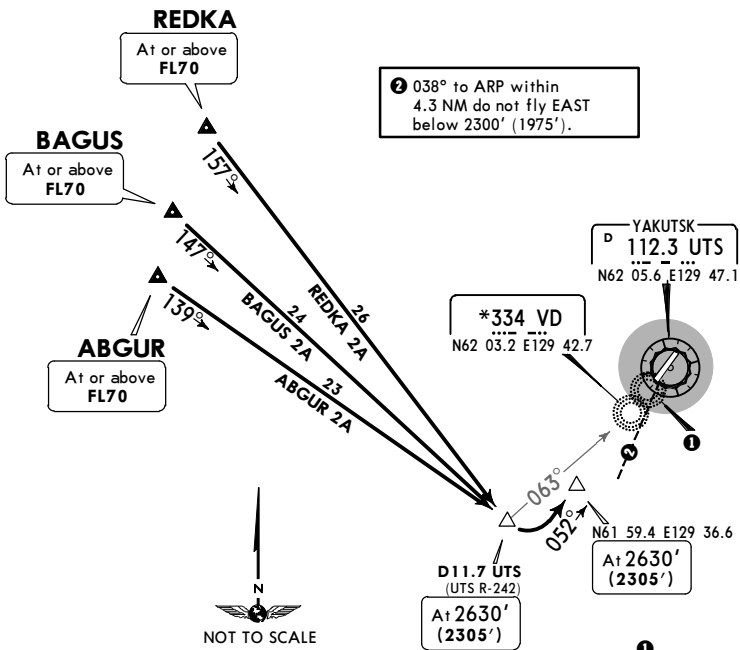
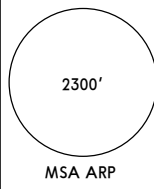
**YAKUTSK, RUSSIA**

**STAR**

16 NOV 18 (10-2X3)

ATIS <b>126.2</b> Russian only	Apt Elev <b>328'</b>	Alt Set: MM (hPa on request) QNH on request (QFE) Trans level: FL50 FL60 if pressure is less than 751 mm (1001.3 hPa) FL70 if pressure is less than 724 mm (965.3 hPa) Trans alt: 3610' (3285')
--------------------------------------	-------------------------	---

**ABGUR 2A [ABGU2A]**  
**BAGUS 2A [BAGU2A]**  
**REDKA 2A [REDK2A]**  
**RWY 05R ARRIVALS**



**HOLDING OVER VD**

Altitudes and heights by ATC, but not below MNM SECT height.  
IAS for ACFT:  
- CAT A: 130 KT  
- CAT B: 175 KT  
- CAT C & D: 270 KT

**WARNING**  
When continuous RADAR control is not provided and onboard navigation facilities operate unsteadily (by crew's report) ACFT shall proceed to V with subsequent descent and approach in accordance with this chart.

**ALT/HEIGHT CONVERSION**

QNH	(QFE)
3610'	(3285' - 1000m)
2630'	(2305' - 700m)
2300'	(1975' - 600m)

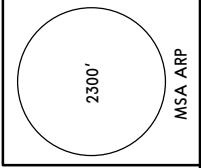
UEEE/YKS  
YAKUTSK

JEPPesen  
16 NOV 18 (10-2X4)

YAKUTSK, RUSSIA  
STAR

ATIS <b>126.2</b> Russian only	Apt Elev <b>328'</b>	Alt Set: MM (hPa on request) QNH on request (QFE) Trans level: FL50 FL60 if pressure is less than 751 mm (1001.3 hPa) FL70 if pressure is less than 724 mm (965.3 hPa) Trans alt: 3610' (3296')
--------------------------------------	-------------------------	---

**ABGUR 4A [ABGU4A]**  
**BAGUS 4A [BAGU4A]**  
**REDKA 4A [REDK4A]**  
**RWY 23L ARRIVALS**

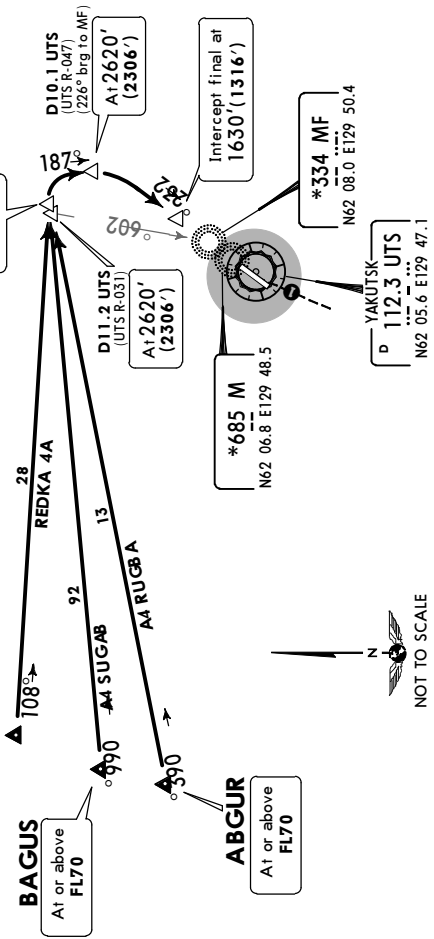


**WARNING**  
 When continuous RADAR control is not provided and onboard navigation facilities operate unsteadily (by crew's report) ACFT shall proceed to M with subsequent descent and approach in accordance with this chart.

**ALT/HEIGHT CONVERSION**

QNH (QFE)
3610' (3296' - 1000m)
2620' (2306' - 700m)
2290' (1976' - 600m)
1630' (1316' - 400m)

**REDKA**  
 At or above FL70



**HOLDING OVER MF**  
 Altitudes and heights by ATC, but not below MINM SECT height.  
 IAS for ACFT:  
 - CAT A: 130 KT  
 - CAT B: 175 KT  
 - CAT C & D: 270 KT



UEEE/YKS  
YAKUTSK

JEPPesen

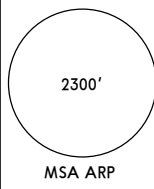
YAKUTSK, RUSSIA

16 NOV 18 (10-2X5)

STAR

ATIS <b>126.2</b> Russian only	Apt Elev <b>328'</b>	Alt Set: MM (hPa on request) QNH on request (QFE) Trans level: FL50 FL60 if pressure is less than 751 mm (1001.3 hPa) FL70 if pressure is less than 724 mm (965.3 hPa) Trans alt: 3610' (3285')
--------------------------------------	-------------------------	---

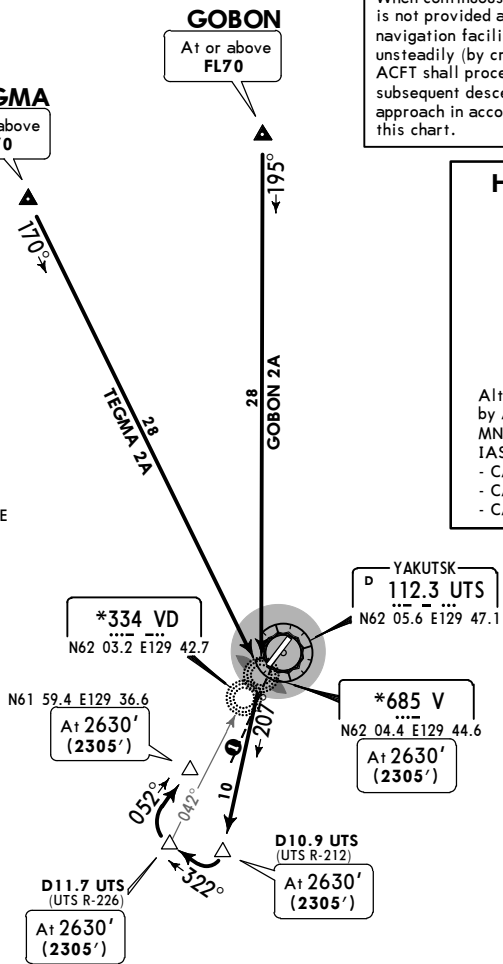
GOBON 2A [GOB02A]  
TEGMA 2A [TEGM2A]  
RWY 05R ARRIVALS



**WARNING**  
When continuous RADAR control is not provided and onboard navigation facilities operate unsteadily (by crew's report) ACFT shall proceed to V with subsequent descent and approach in accordance with this chart.

**HOLDING OVER VD**

Altitudes and heights by ATC, but not below MNM SECT height.  
IAS for ACFT:  
- CAT A: 130 KT  
- CAT B: 175 KT  
- CAT C & D: 270 KT



① 038° to ARP within 4.3 NM do not fly EAST below 2300' (1975').

ALT/HEIGHT CONVERSION

QNH	(QFE)
3610'	(3285' - 1000m)
2630'	(2305' - 700m)
2300'	(1975' - 600m)

**UEEE/YKS**  
**YAKUTSK**

**JEPPESSEN**

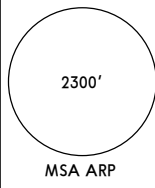
**YAKUTSK, RUSSIA**

16 NOV 18 **(10-2X6)**

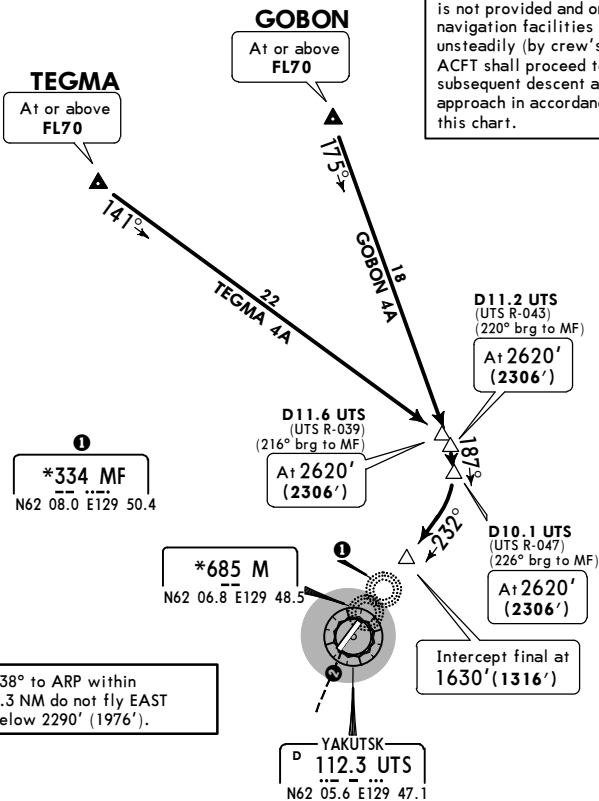
**STAR**

ATIS <b>126.2</b> Russian only	Apt Elev <b>328'</b>	Alt Set: MM (hPa on request) QNH on request (QFE) Trans level: FL50 FL60 if pressure is less than 751 mm (1001.3 hPa) FL70 if pressure is less than 724 mm (965.3 hPa) Trans alt: 3610' (3296')
--------------------------------------	-------------------------	---

**GOBON 4A [GOBO4A]**  
**TEGMA 4A [TEGM4A]**  
**RWY 23L ARRIVALS**



**WARNING**  
When continuous RADAR control is not provided and onboard navigation facilities operate unsteadily (by crew's report) ACFT shall proceed to M with subsequent descent and approach in accordance with this chart.



② 038° to ARP within 4.3 NM do not fly EAST below 2290' (1976').



**HOLDING OVER MF**

Altitudes and heights by ATC, but not below MNM SECT height.  
IAS for ACFT:  
- CAT A: 130 KT  
- CAT B: 175 KT  
- CAT C & D: 270 KT

ALT/HEIGHT CONVERSION	QNH	(QFE)
3610'	(3296' - 1000m)	
2620'	(2306' - 700m)	
2290'	(1976' - 600m)	
1630'	(1316' - 400m)	

UEEE/YKS  
YAKUTSK

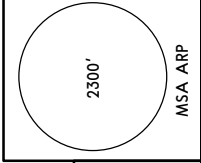
**JEPPesen**  
16 NOV 18 **(10-2X7)**

**YAKUTSK, RUSSIA**  
**STAR**

ATIS <b>126.2</b> Russian only	Apt Elev <b>328'</b>	Alt Set: MM (hPa on request) QNH on request (QFE) Trans level: FL50 FL60 if pressure is less than 751 mm (1001.3 hPa) FL70 if pressure is less than 724 mm (965.3 hPa) Trans alt: 3610' (3296')
--------------------------------------	-------------------------	---

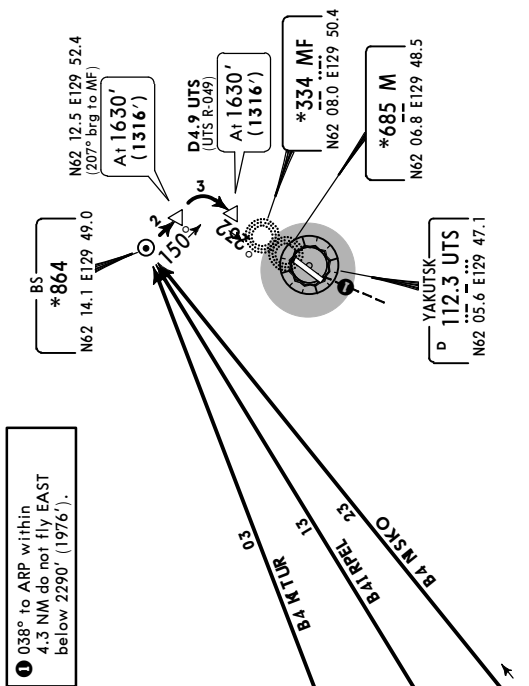
**LEPRI 4B [LEPR4B]**  
**OXSIN 4B [OKS14B]**  
**RUTIK 4B [RUT14B]**  
**RWY 23L ARRIVALS**

**CAT A & B**



**ALT/HEIGHT CONVERSION**  
(QFE)

QNH	3610'	(3296' - 1000m)
2290'	(1976' - 600m)	
1630'	(1316' - 400m)	



**1** 038° to ARP within 4.3 NM do not fly EAST below 2290' (1976').

**WARNING**  
 When continuous RADAR control is not provided and onboard navigation facilities operate unsteadily (by crew's report) ACFT shall proceed to M with subsequent descent and approach in accordance with this chart.

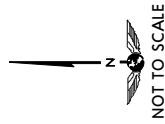
**HOLDING OVER MF**

Altitudes and heights by ATC, but not below MNM SECT height.  
 IAS for ACFT:  
 - CAT A: 150 KT  
 - CAT B: 175 KT

**RUTIK**  
At or above FL70

**LEPRI**  
At or above FL70

**OXSIN**  
At or above FL70



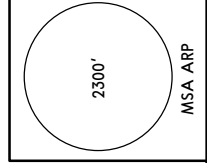
UEEE/YKS  
YAKUTSK

16 NOV 18 **(10-2X8)**

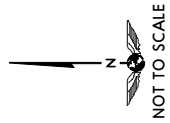
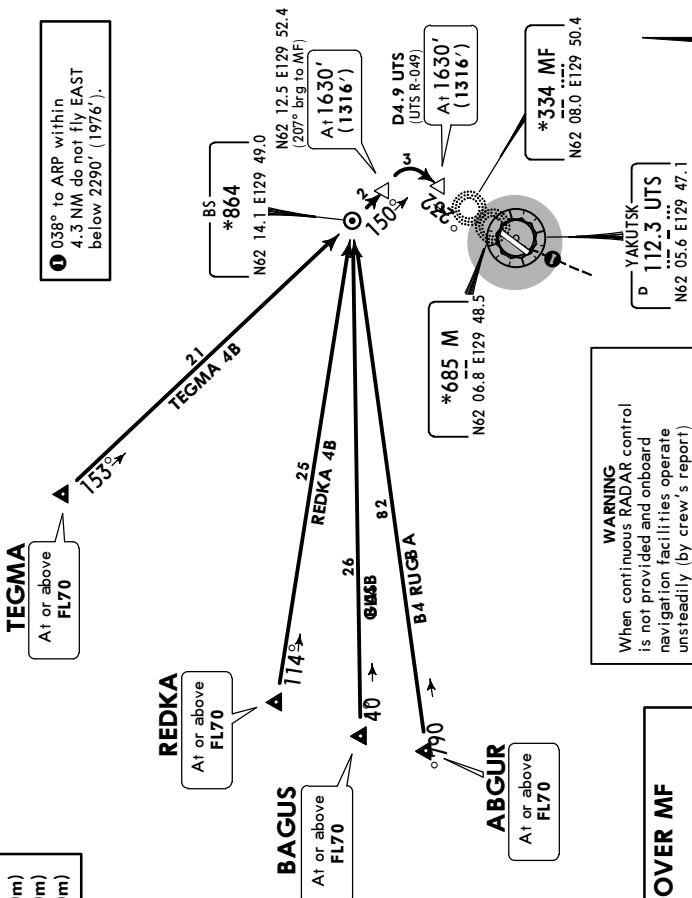
YAKUTSK, RUSSIA  
**STAR**

ATIS <b>126.2</b> Russian only	Apt Elev <b>328'</b>	Alt Set: MM (hPa on request) QNH on request (QFE) Trans level: FL50 FL60 if pressure is less than 751 mm (1001.3 hPa) FL70 if pressure is less than 724 mm (965.3 hPa) Trans alt: 3610' (3296')
--------------------------------------	-------------------------	---

**ABGUR 4B [ABGU4B]**  
**BAGUS 4B [BAGU4B]**  
**REDKA 4B [REDK4B]**  
**TEGMA 4B [TEGM4B]**  
**RWY 23L ARRIVALS**  
**CAT A & B**



**1** 038° to ARP within  
 4.3 NM do not fly EAST  
 below 2290' (1976').



**WARNING**  
 When continuous RADAR control is not provided and onboard navigation facilities operate unsteadily (by crew's report) ACFT shall proceed to M with subsequent descent and approach in accordance with this chart.

**HOLDING OVER MF**  
 Altitudes and heights by ATC, but not below MNM SECT height.  
 IAS for ACFT:  
 - CAT A: 150 KT  
 - CAT B: 175 KT

ALT/HEIGHT CONVERSION (QFE)

QNH	3610'	(3296' - 1000m)
	2290'	(1976' - 600m)
	1630'	(1316' - 400m)



UEEE/YKS  
YAKUTSK

**JEPPESEN**  
 28 DEC 18 (10-3) Eff 3 Jan
YAKUTSK, RUSSIA  
RNAV SID

<b>RNAV SID DESIGNATION</b>	<b>REFER TO CHART</b>
GIMEK 5E, SORIP 5E, TUROP 5E	10-3B
GIMEK 5F, SORIP 5F, TUROP 5F	10-3C
IDES A 5E, TEKDI 5E	10-3D
IDES A 5F, TEKDI 5F	10-3E
AGMAT 5E, DOBUS 5E, NENAL 5E	10-3F
AGMAT 5F, DOBUS 5F, NENAL 5F	10-3G
BESIB 5E, KUTEG 5E, OKTUR 5E	10-3H
BESIB 5F, KUTEG 5F, OKTUR 5F	10-3J
DENIB 5E, DIROM 5E, OGLIS 5E	10-3K
DENIB 5F, DIROM 5F, OGLIS 5F	10-3L
LEPRI 5E, OKSIN 5E, RUTIK 5E	10-3M
LEPRI 5F, OKSIN 5F, RUTIK 5F	10-3N
ABGUR 5E, BAGUS 5E, REDKA 5E	10-3P
ABGUR 5F, BAGUS 5F, REDKA 5F	10-3Q
GOBON 5E, NIBES 5E, TEGMA 5E	10-3S
GOBON 5F, NIBES 5F, TEGMA 5F	10-3T

UEEE/YKS  
YAKUTSK

**JEPPESEN**  
 28 DEC 18 (10-3A) Eff 3 Jan

YAKUTSK, RUSSIA

**SID**

SID DESIGNATION	REFER TO CHART
GIMEK 1, SORIP 1, TUROP 1	10-3U
GIMEK 3, SORIP 3, TUROP 3	10-3V
IDES A 1, TEKDI 1	10-3V1
IDES A 3, TEKDI 3	10-3V2
AGMAT 1, DOBUS 1, NENAL 1	10-3V3
AGMAT 3, DOBUS 3, NENAL 3	10-3V4
BESIB 1, KUTEG 1, OKTUR 1	10-3W
BESIB 3, KUTEG 3, OKTUR 3	10-3X
DENIB 1, DIROM 1, OGLIS 1	10-3X1
DENIB 3, DIROM 3, OGLIS 3	10-3X2
LEPRI 1, OKSIN 1, RUTIK 1	10-3X3
LEPRI 3, OKSIN 3, RUTIK 3	10-3X4
ABGUR 1, BAGUS 1, REDKA 1	10-3X5
ABGUR 3, BAGUS 3, REDKA 3	10-3X6
GOBON 1, TEGMA 1	10-3X7
GOBON 3, TEGMA 3	10-3X8

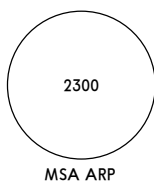
**UEEE/YKS**  
**YAKUTSK**

**JEPPesen**  
28 DEC 18 **(10-3B)** Eff 3 Jan

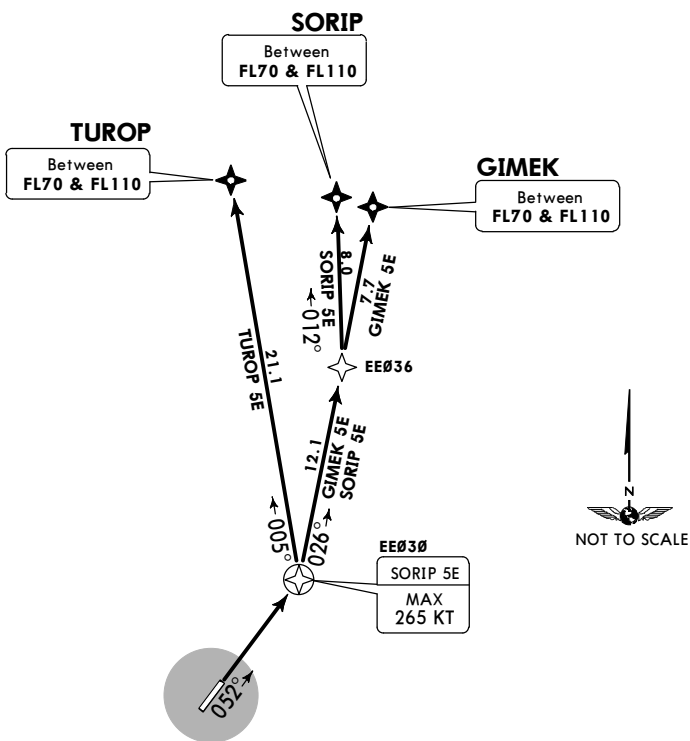
**YAKUTSK, RUSSIA**  
**RNAV SID**

Apt Elev  
**328'**

QNH on request (QFE)  
Trans level: FL50  
FL60 if pressure is less than 751 mm (1001.3 hPa)  
FL70 if pressure is less than 724 mm (965.3 hPa)  
Trans alt: 3610' (3287')  
1. RNAV 1  
2. GNSS required



**GIMEK 5E [GIME5E]**  
**SORIP 5E [SORI5E]**  
**TUROP 5E [TURO5E]**  
**RWY 05R RNAV DEPARTURES**



These SIDs require minimum climb gradients of

**GIMEK 5E, SORIP 5E:** 4.3% up to FL70 due to airspace limitations.  
**TUROP 5E:** 4.0% up to FL70 due to airspace limitations.

Gnd speed-KT	75	100	150	200	250	300
4.0% V/V (fpm)	304	405	608	810	1013	1215
4.3% V/V (fpm)	327	435	653	871	1089	1306

ALT/HEIGHT CONVERSION	
QNH	(QFE)
<b>3610'</b>	<b>(3287' - 1000m)</b>

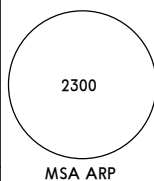
**UEEE/YKS**  
**YAKUTSK**

**JEPPESEN**  
28 DEC 18 **(10-3C)** Eff 3 Jan

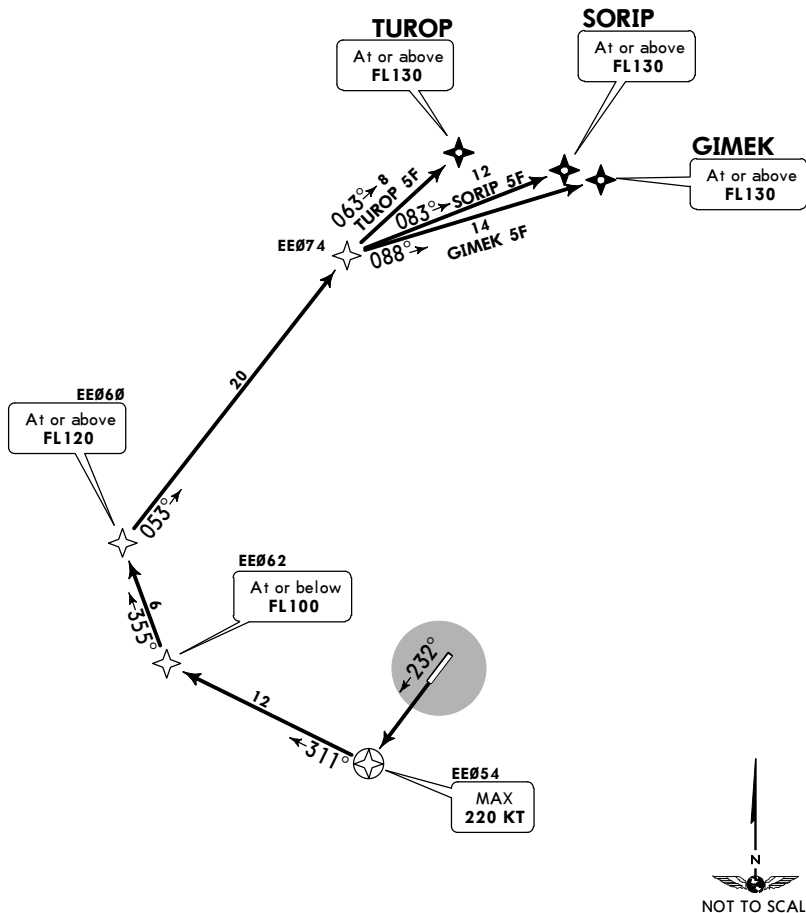
**YAKUTSK, RUSSIA**  
**RNAV SID**

Apt Elev  
**328'**

QNH on request (QFE)  
Trans level: FL50  
FL60 if pressure is less than 751 mm (1001.3 hPa)  
FL70 if pressure is less than 724 mm (965.3 hPa)  
Trans alt: 3610' (3296')  
1. RNAV 1  
2. GNSS required.  
3. EXPECT close-in obstacles.



**GIMEK 5F [GIME5F]**  
**SORIP 5F [SORI5F]**  
**TUROP 5F [TURO5F]**  
**RWY 23L RNAV DEPARTURES**



These SIDs require a minimum climb gradient of 7.2% up to FL120 due to airspace limitations.

Gnd speed-KT	75	100	150	200	250	300
7.2% V/V (fpm)	547	729	1094	1458	1823	2187

ALT/HEIGHT CONVERSION	
QNH	(QFE)
3610'	(3296' - 1000m)

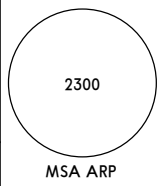
**UEEE/YKS**  
**YAKUTSK**

**JEPPESEN**  
 28 DEC 18 **(10-3D)** Eff 3 Jan

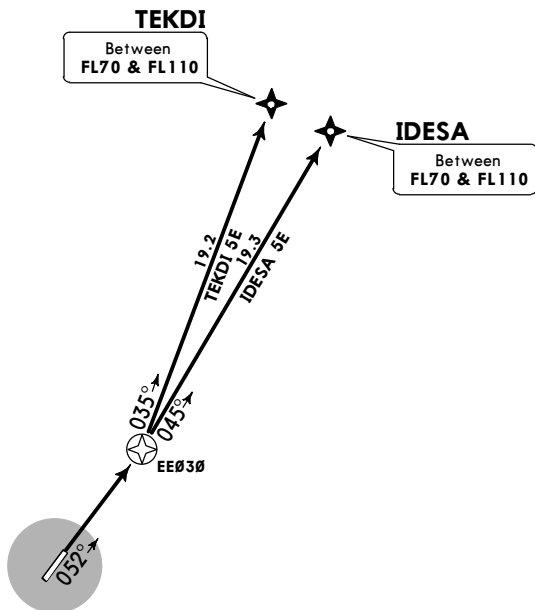
**YAKUTSK, RUSSIA**  
**RNAV SID**

Apt Elev  
**328'**

QNH on request (QFE)  
 Trans level: FL50  
 FL60 if pressure is less than 751 mm (1001.3 hPa)  
 FL70 if pressure is less than 724 mm (965.3 hPa)  
 Trans alt: 3610' (3287')  
 1. RNAV 1  
 2. GNSS required.



**IDESA 5E [IDES5E]**  
**TEKDI 5E [TEKD5E]**  
**RWY 05R RNAV DEPARTURES**



These SIDs require a minimum climb gradient of 4.3% up to FL70 due to airspace limitations.

Gnd speed-KT	75	100	150	200	250	300
4.3% V/V (fpm)	327	435	653	871	1089	1306

ALT/HEIGHT CONVERSION	
QNH	(QFE)
3610'	(3287' - 1000m)

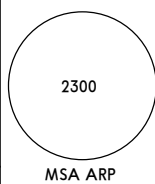
**UEEE/YKS**  
**YAKUTSK**

**JEPPesen**  
28 DEC 18 **(10-3E)** Eff 3 Jan

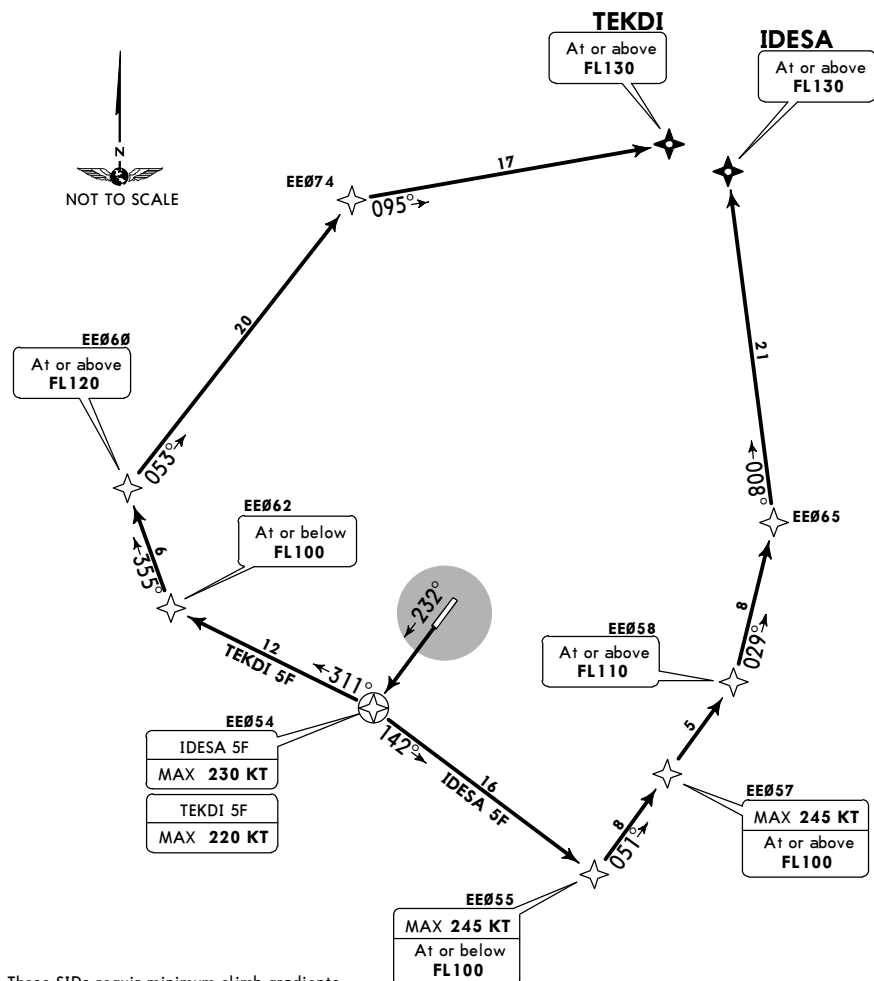
**YAKUTSK, RUSSIA**  
**RNAV SID**

Apt Elev  
**328'**

QNH on request (QFE)  
Trans level: FL50  
FL60 if pressure is less than 751 mm (1001.3 hPa)  
FL70 if pressure is less than 724 mm (965.3 hPa)  
Trans alt: 3610' (3296')  
1. RNAV 1  
2. GNSs required.  
3. EXPECT close-in obstacles.



**IDESA 5F [IDES5F]**  
**TEKDI 5F [TEKD5F]**  
**RWY 23L RNAV DEPARTURES**



These SIDs require minimum climb gradients of  
**IDESA 5F:** 5.0% up to FL110 due to airspace limitations.  
**TEKDI 5F:** 7.2% up to FL120 due to airspace limitations.

Gnd speed-KT	75	100	150	200	250	300
5.0% V/V (fpm)	380	506	760	1013	1266	1519
7.2% V/V (fpm)	547	729	1094	1458	1823	2187

ALT/HEIGHT CONVERSION	
QNH	(QFE)
3610'	(3296' - 1000m)

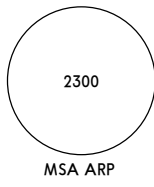
**UEEE/YKS**  
**YAKUTSK**

**JEPPesen**  
28 DEC 18 **(10-3F)** Eff 3 Jan

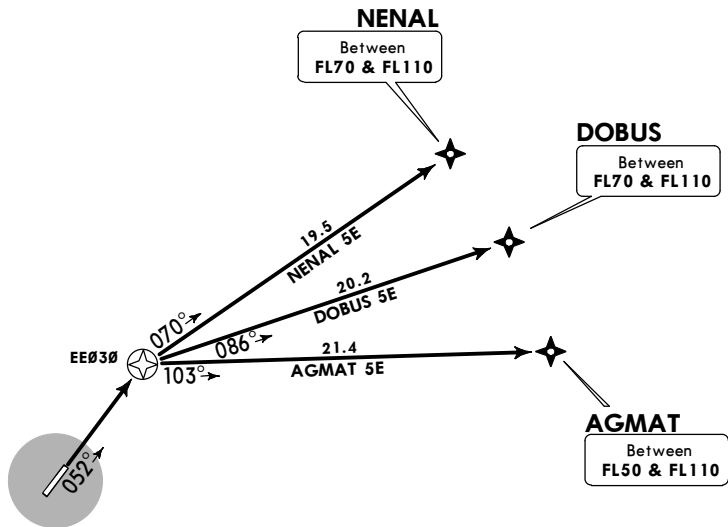
**YAKUTSK, RUSSIA**  
**RNAV SID**

Apt Elev  
**328'**

QNH on request (QFE)  
Trans level: FL50  
FL60 if pressure is less than 751 mm (1001.3 hPa)  
FL70 if pressure is less than 724 mm (965.3 hPa)  
Trans alt: 3610' (3287')  
1. RNAV 1  
2. GNSS required.



**AGMAT 5E [AGMA5E]**  
**DOBUS 5E [DOBU5E]**  
**NENAL 5E [NENA5E]**  
**RWY 05R RNAV DEPARTURES**



**DOBUS 5E, NENAL 5E**

These SIDs require a minimum climb gradient of 4.3% up to FL70 due to airspace limitations.

Gnd speed-KT	75	100	150	200	250	300
4.3% V/V (fpm)	327	435	653	871	1089	1306

ALT/HEIGHT CONVERSION	
QNH	(QFE)
3610'	(3287' - 1000m)

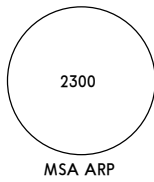
**UEEE/YKS**  
**YAKUTSK**

**JEPPESEN**  
28 DEC 18 **(10-3G)** Eff 3 Jan

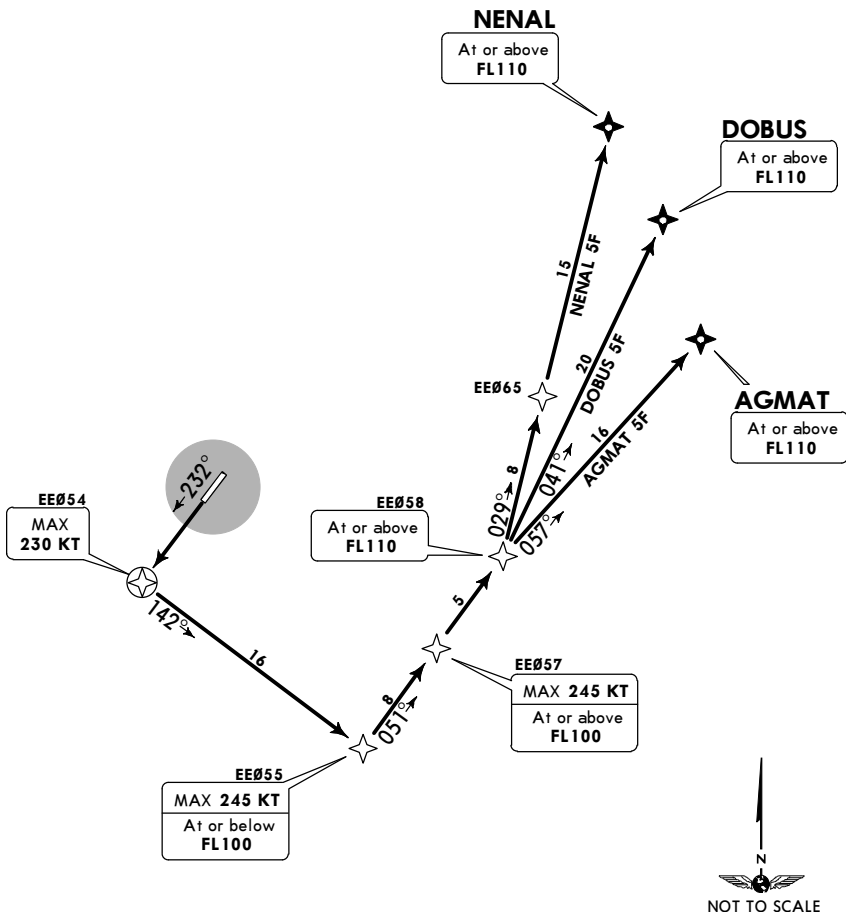
**YAKUTSK, RUSSIA**  
**RNAV SID**

Apt Elev  
**328'**

QNH on request (QFE)  
Trans level: FL50  
FL60 if pressure is less than 751 mm (1001.3 hPa)  
FL70 if pressure is less than 724 mm (965.3 hPa)  
Trans alt: 3610' (3296')  
1. RNAV 1  
2. GNSS required.  
3. EXPECT close-in obstacles.



**AGMAT 5F [AGMA5F]**  
**DOBUS 5F [DOBU5F]**  
**NENAL 5F [NENA5F]**  
**RWY 23L RNAV DEPARTURES**



These SIDs require a minimum climb gradient of 5.0% up to FL110 due to airspace limitations.

Gnd speed-KT	75	100	150	200	250	300
5.0% V/V (fpm)	380	506	760	1013	1266	1519

ALT/HEIGHT CONVERSION	
QNH	(QFE)
3610'	(3296' - 1000m)



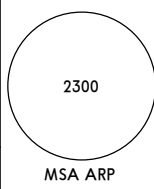
UEEE/YKS  
YAKUTSK

JEPPESEN  
25 JAN 19 (10-3H)

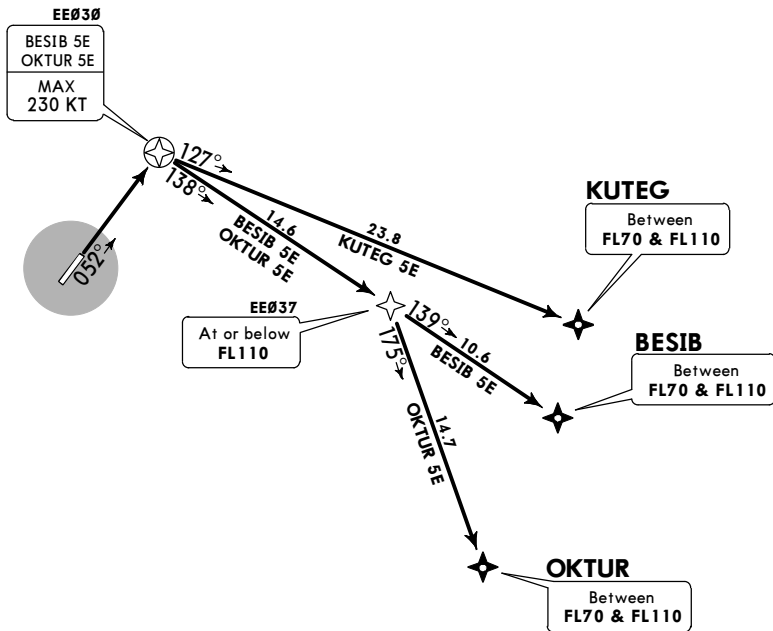
YAKUTSK, RUSSIA  
RNAV SID

Apt Elev  
328'

QNH on request (QFE)  
Trans level: FL50  
FL60 if pressure is less than 751 mm (1001.3 hPa)  
FL70 if pressure is less than 724 mm (965.3 hPa)  
Trans alt: 3610' (3287')  
1. RNAV 1  
2. GNSS required.



BESIB 5E [BESI5E]  
KUTEG 5E [KUTE5E]  
OKTUR 5E [OKTU5E]  
RWY 05R RNAV DEPARTURES



**KUTEG 5E**

This SID requires a minimum climb gradient of 3.5% up to FL70 due to airspace limitations.

Gnd speed-KT	75	100	150	200	250	300
3.5% V/V (fpm)	266	354	532	709	886	1063



ALT/HEIGHT CONVERSION	
QNH	(QFE)
3610'	(3287' - 1000m)

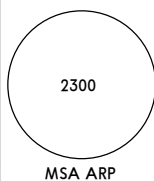
UEEE/YKS  
YAKUTSK

**JEPPESN**  
25 JAN 19 (10-3J)

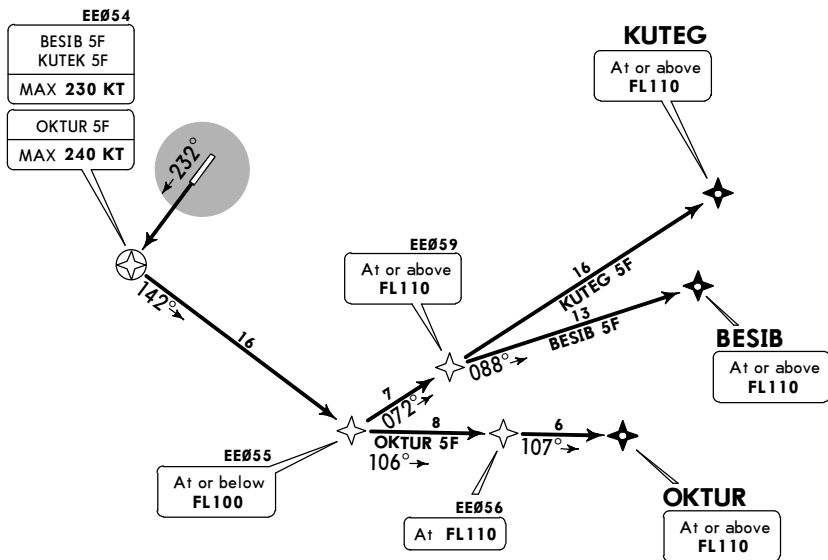
**YAKUTSK, RUSSIA**  
**RNAV SID**

Apt Elev  
328'

QNH on request (QFE)  
Trans level: FL50  
FL60 if pressure is less than 751 mm (1001.3 hPa)  
FL70 if pressure is less than 724 mm (965.3 hPa)  
Trans alt: 3610' (3296')  
1. RNAV 1  
2. GNSS required.  
3. EXPECT close-in obstacles.



**BESIB 5F [BESI5F]  
KUTEG 5F [KUTE5F]  
OKTUR 5F [OKTU5F]  
RWY 23L RNAV DEPARTURES**



These SIDs require minimum climb gradients of  
**BESIB & KUTEG 5F:** 5.8% up to FL110 due to airspace limitations.  
**OKTUR 5F:** 5.5% up to FL110 due to airspace limitations.

Gnd speed-KT	75	100	150	200	250	300
5.5% V/V (fpm)	418	557	835	1114	1392	1671
5.8% V/V (fpm)	441	587	881	1175	1468	1762

ALT/HEIGHT CONVERSION	
QNH	(QFE)
3610'	(3296' - 1000m)

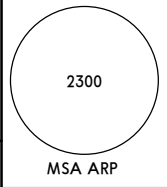
**UEEE/YKS**  
**YAKUTSK**

**JEPPESEN**  
28 DEC 18 **(10-3K)** Eff 3 Jan

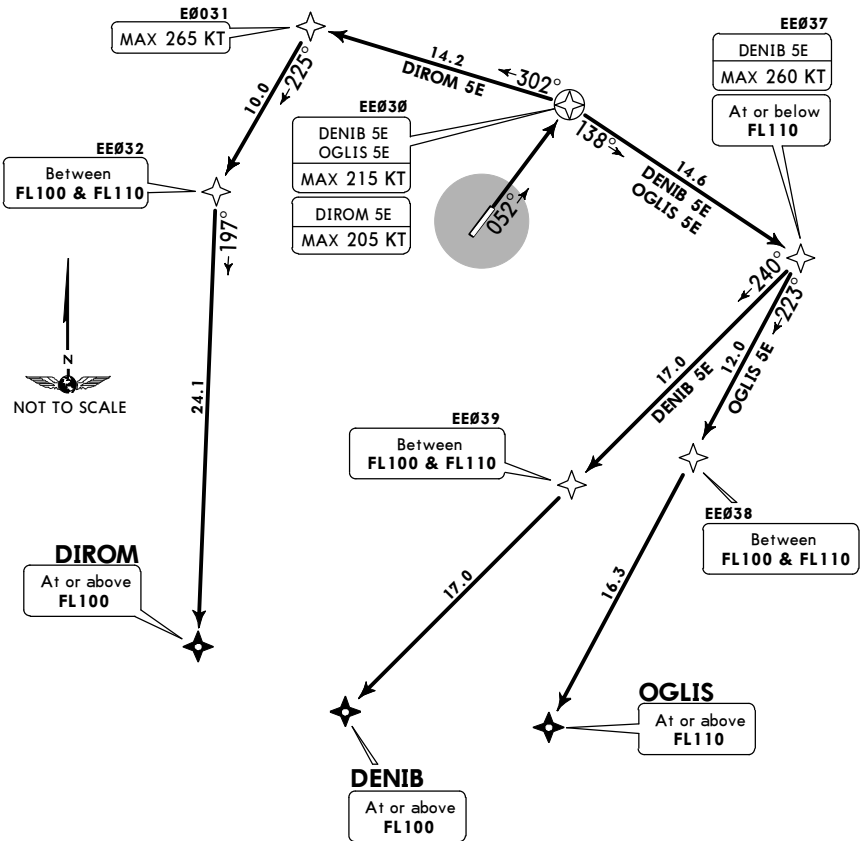
**YAKUTSK, RUSSIA**  
**RNAV SID**

Apt Elev  
**328'**

QNH on request (QFE)  
Trans level: FL50  
FL60 if pressure is less than 751 mm (1001.3 hPa)  
FL70 if pressure is less than 724 mm (965.3 hPa)  
Trans alt: 3610' (3287')  
1. RNAV 1  
2. GNSS required.



**DENIB 5E [DENI5E]**  
**DIROM 5E [DIRO5E]**  
**OGLIS 5E [OGLI5E]**  
**RWY 05R RNAV DEPARTURES**



These SIDs require minimum climb gradients  
of  
**DENIB 5E:** 4.2% up to FL100 due to airspace limitations.  
**DIROM 5E:** 4.9% up to FL100 due to airspace limitations.  
**OGLIS 5E:** 4.7% up to FL100 due to airspace limitations.

Gnd speed-KT	75	100	150	200	250	300
4.2% V/V (fpm)	319	425	638	851	1063	1276
4.7% V/V (fpm)	357	476	714	952	1190	1428
4.9% V/V (fpm)	372	496	744	992	1241	1489

ALT/HEIGHT CONVERSION	
QNH	(QFE)
3610'	(3287' - 1000m)

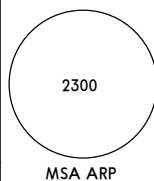
**UEEE/YKS**  
**YAKUTSK**

**JEPPesen**  
28 DEC 18 **(10-3L)** Eff 3 Jan

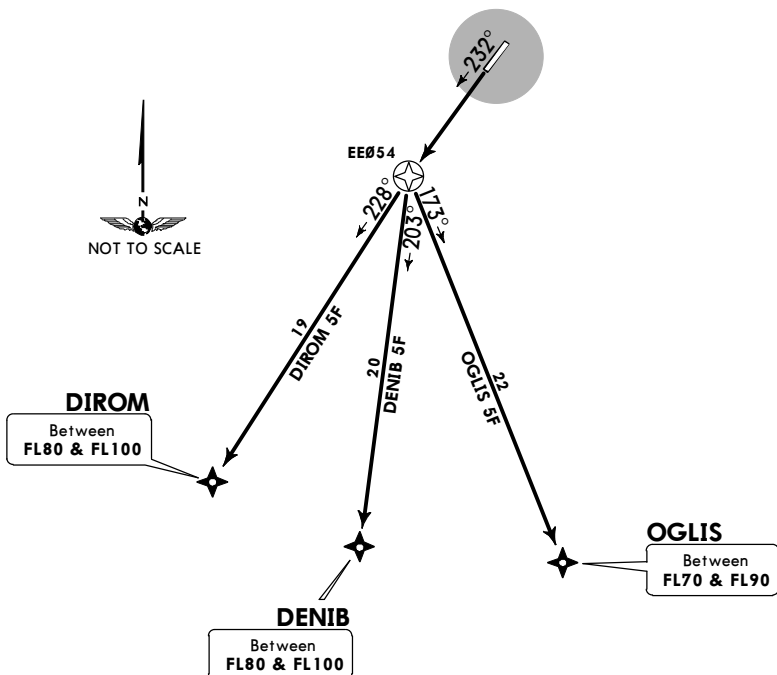
**YAKUTSK, RUSSIA**  
**RNAV SID**

Apt Elev  
**328'**

QNH on request (QFE)  
Trans level: FL50  
FL60 if pressure is less than 751 mm (1001.3 hPa)  
FL70 if pressure is less than 724 mm (965.3 hPa)  
Trans alt: 3610' (3296')  
1. RNAV 1  
2. GNSS required.  
3. EXPECT close-in obstacles.



**DENIB 5F [DENI5F]**  
**DIROM 5F [DIRO5F]**  
**OGLIS 5F [OGLI5F]**  
**RWY 23L RNAV DEPARTURES**



These SIDs require minimum climb gradients of

**DENIB 5F:** 4.8% up to FL80 due to airspace limitations.  
**DIROM 5F:** 4.9% up to FL80 due to airspace limitations.  
**OGLIS 5F:** 3.8% up to FL70 due to airspace limitations.

Gnd speed-KT	75	100	150	200	250	300
3.8% V/V (fpm)	289	385	577	770	962	1154
4.8% V/V (fpm)	365	486	729	972	1215	1458
4.9% V/V (fpm)	372	496	744	992	1241	1489

ALT/HEIGHT CONVERSION	
QNH	(QFE)
3610'	(3296' - 1000m)

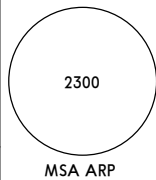
**UEEE/YKS**  
**YAKUTSK**

**JEPPESEN**  
28 DEC 18 (10-3M) Eff 3 Jan

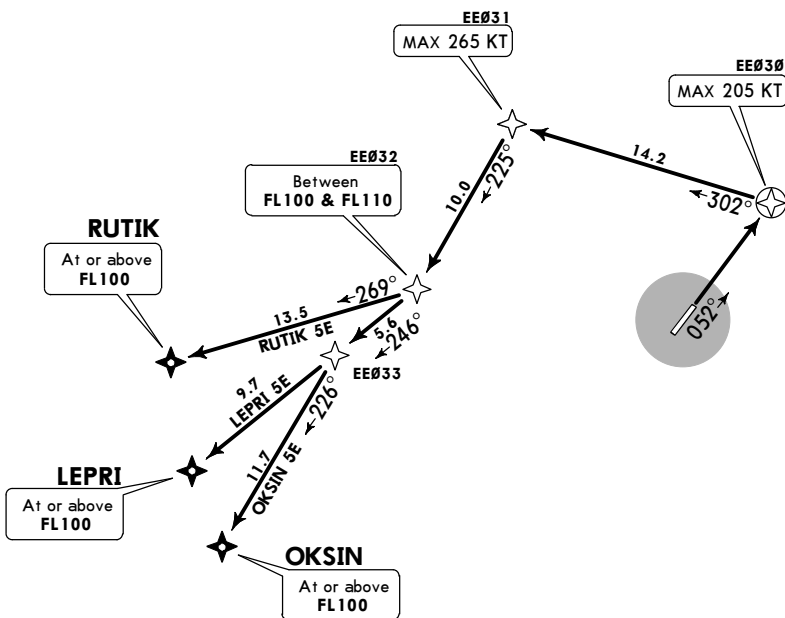
**YAKUTSK, RUSSIA**  
**RNAV SID**

Apt Elev  
**328'**

QNH on request (QFE)  
Trans level: FL50  
FL60 if pressure is less than 751 mm (1001.3 hPa)  
FL70 if pressure is less than 724 mm (965.3 hPa)  
Trans alt: 3610' (3287')  
1. RNAV 1  
2. GNSS required.



**LEPRI 5E [LEPR5E]**  
**OKSIN 5E [OKS15E]**  
**RUTIK 5E [RUT15E]**  
**RWY 05R RNAV DEPARTURES**



These SIDs require minimum climb gradients of 4.9% up to FL100 due to airspace limitations.

Gnd speed-KT	75	100	150	200	250	300
4.9% V/V (fpm)	372	496	744	992	1241	1489

ALT/HEIGHT CONVERSION  
QNH (QFE)  
**3610' (3287' - 1000m)**

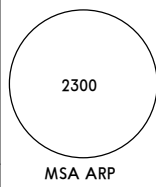
**UEEE/YKS**  
**YAKUTSK**

**JEPPesen**  
28 DEC 18 **(10-3N)** Eff 3 Jan

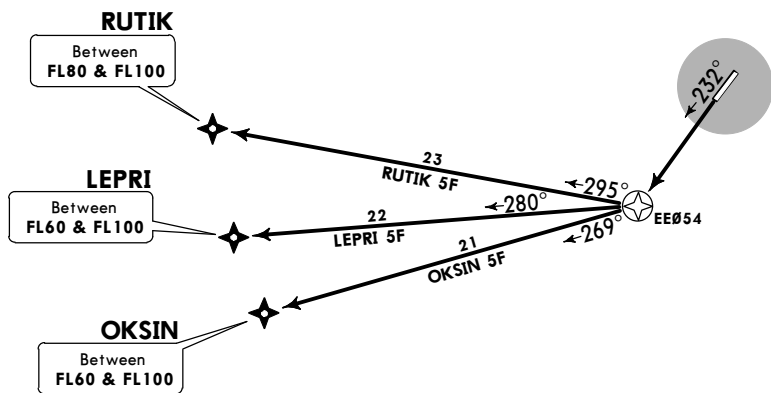
**YAKUTSK, RUSSIA**  
**RNAV SID**

Apt Elev  
**328'**

QNH on request (QFE)  
Trans level: FL50  
FL60 if pressure is less than 751 mm (1001.3 hPa)  
FL70 if pressure is less than 724 mm (965.3 hPa)  
Trans alt: 3610' (3296')  
1. RNAV 1  
2. GNSS required.  
3. EXPECT close-in obstacles.



**LEPRI 5F [LEPR5F]**  
**OKSIN 5F [OKSI5F]**  
**RUTIK 5F [RUTI5F]**  
**RWY 23L RNAV DEPARTURES**



These SIDs require minimum climb gradients of  
**LEPRI 5F:** 3.4% up to FL60 due to airspace limitations.  
**OKSIN 5F:** 3.5% up to FL60 due to airspace limitations.  
**RUTIK 5F:** 4.3% up to FL80 due to airspace limitations.

Gnd speed-KT	75	100	150	200	250	300
3.4% V/V (fpm)	258	344	516	689	861	1033
3.5% V/V (fpm)	266	354	532	709	886	1063
4.3% V/V (fpm)	327	435	653	871	1089	1306

**ALT/HEIGHT CONVERSION**  
QNH (QFE)  
**3610' (3296' - 1000m)**

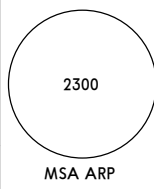
UEEE/YKS  
YAKUTSK

JEPPESSEN  
28 DEC 18 (10-3P) Eff 3 Jan

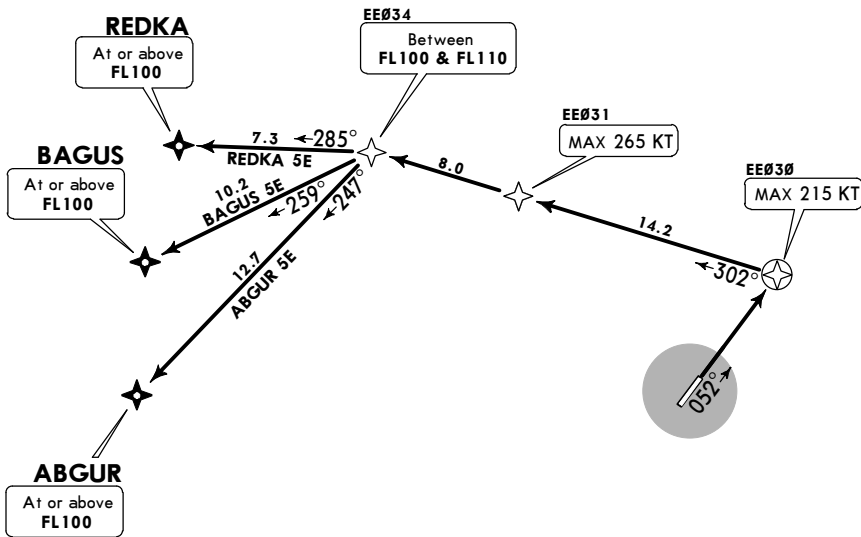
YAKUTSK, RUSSIA  
RNAV SID

Apt Elev  
328'

QNH on request (QFE)  
Trans level: FL50  
FL60 if pressure is less than 751 mm (1001.3 hPa)  
FL70 if pressure is less than 724 mm (965.3 hPa)  
Trans alt: 3610' (3287')  
1. RNAV 1  
2. GNSS required.



ABGUR 5E [ABGU5E]  
BAGUS 5E [BAGU5E]  
REDKA 5E [REDK5E]  
RWY 05R RNAV DEPARTURES



These SIDs require minimum climb gradients of 4.9% up to FL100 due to airspace limitations.

Gnd speed-KT	75	100	150	200	250	300
4.9% V/V (fpm)	372	496	744	992	1241	1489

ALT/HEIGHT CONVERSION  
QNH (QFE)  
3610' (3287' - 1000m)

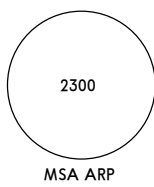
UEEE/YKS  
YAKUTSK

JEPPESEN  
28 DEC 18 (10-3Q) Eff 3 Jan

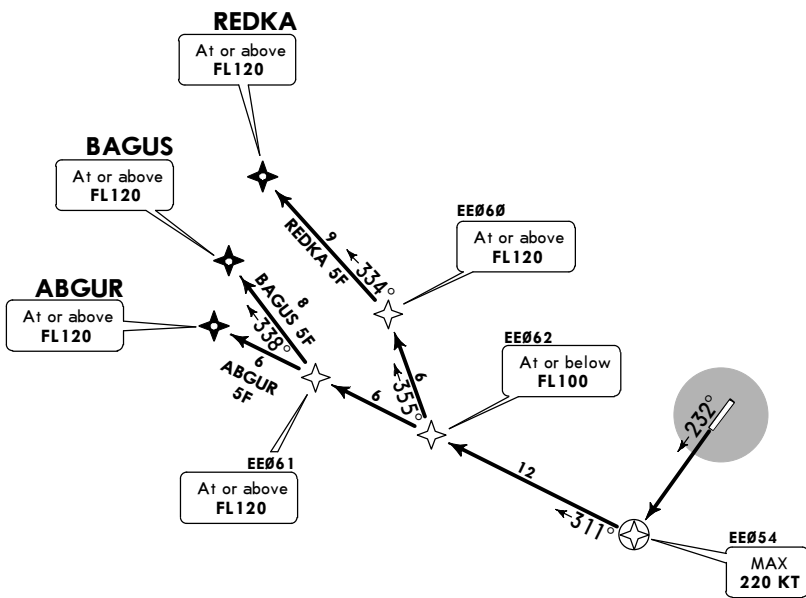
YAKUTSK, RUSSIA  
RNAV SID

Apt Elev  
328'

QNH on request (QFE)  
Trans level: FL50  
FL60 if pressure is less than 751 mm (1001.3 hPa)  
FL70 if pressure is less than 724 mm (965.3 hPa)  
Trans alt: 3610' (3296')  
1. RNAV 1  
2. GNSS required.  
3. EXPECT close-in obstacles.



ABGUR 5F [ABGU5F]  
BAGUS 5F [BAGU5F]  
REDKA 5F [REDK5F]  
RWY 23L RNAV DEPARTURES



These SIDs require a minimum climb gradient of 7.2% up to FL120 due to airspace limitations.

Gnd speed-KT	75	100	150	200	250	300
7.2% V/V (fpm)	547	729	1094	1458	1823	2187



ALT/HEIGHT CONVERSION	
QNH	(QFE)
3610'	(3296' - 1000m)



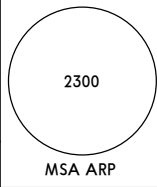
UEEE/YKS  
YAKUTSK

JEPPesen  
28 DEC 18 (10-3S) Eff 3 Jan

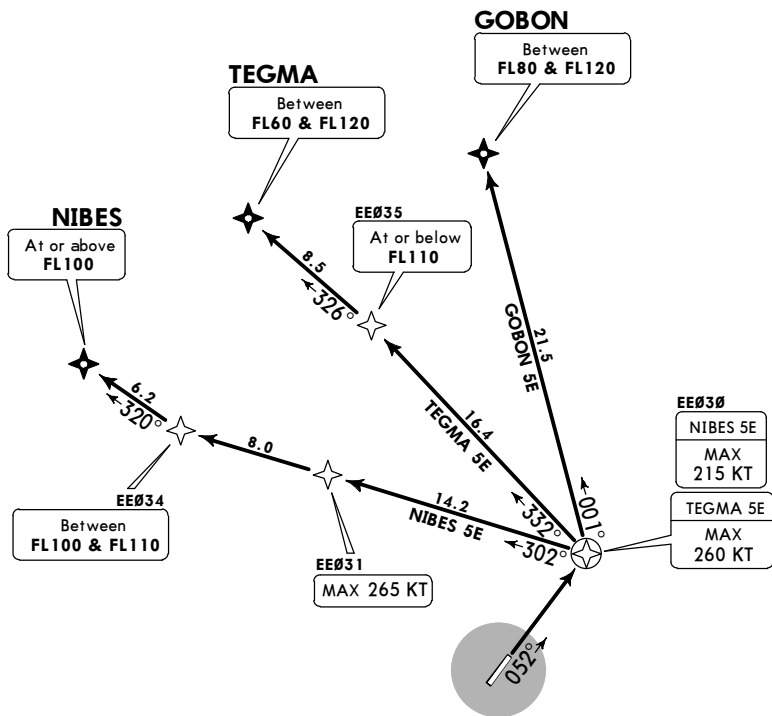
YAKUTSK, RUSSIA  
RNAV SID

Apt Elev  
328'

QNH on request (QFE)  
Trans level: FL50  
FL60 if pressure is less than 751 mm (1001.3 hPa)  
FL70 if pressure is less than 724 mm (965.3 hPa)  
Trans alt: 3610' (3287')  
1. RNAV 1  
2. GNSS required.



GOBON 5E [GOB05E]  
NIBES 5E [NIBE5E]  
TEGMA 5E [TEGM5E]  
RWY 05R RNAV DEPARTURES



These SIDs require minimum climb gradients of

**GOBON 5E:** 4.5% up to FL80 due to airspace limitations.  
**NIBES 5E:** 4.9% up to FL100 due to airspace limitations.

Gnd speed-KT	75	100	150	200	250	300
4.5% V/V (fpm)	342	456	684	911	1139	1367
4.9% V/V (fpm)	372	496	744	992	1241	1489

ALT/HEIGHT CONVERSION	
QNH	(QFE)
3610'	(3287' - 1000m)

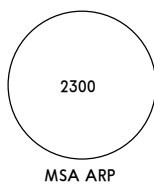
**UEEE/YKS**  
**YAKUTSK**

**JEPPesen**  
28 DEC 18 **(10-3T)** Eff 3 Jan

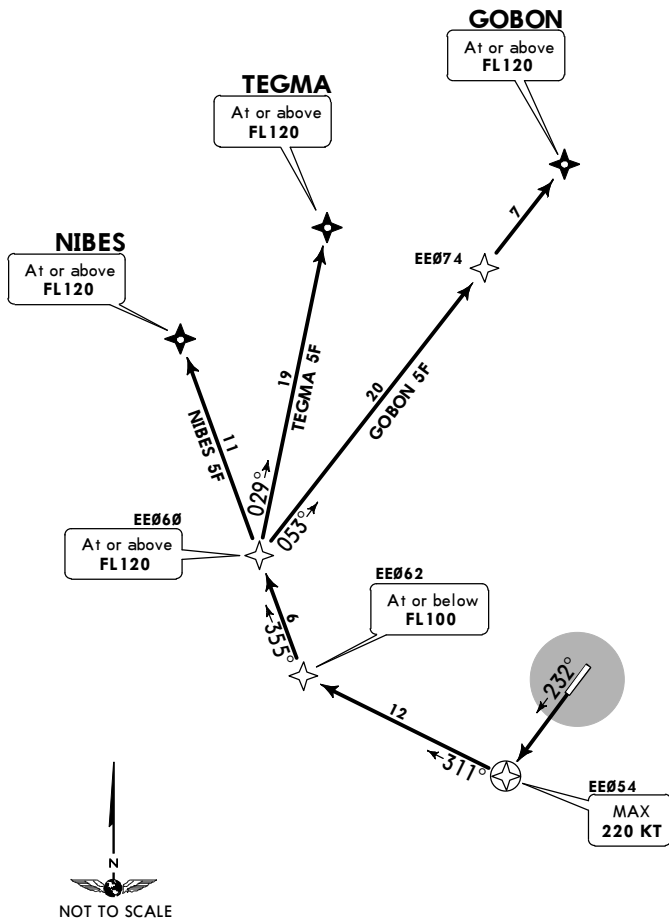
**YAKUTSK, RUSSIA**  
**RNAV SID**

Apt Elev  
**328'**

QNH on request (QFE)  
Trans level: FL50  
FL60 if pressure is less than 751 mm (1001.3 hPa)  
FL70 if pressure is less than 724 mm (965.3 hPa)  
Trans alt: 3610' (3296')  
1. RNAV 1  
2. GNSS required.  
3. EXPECT close-in obstacles.



**GOBON 5F [GOB05F]**  
**NIBES 5F [NIBE5F]**  
**TEGMA 5F [TEGM5F]**  
**RWY 23L RNAV DEPARTURES**



These SIDs require a minimum climb gradient of 7.2% up to FL120 due to airspace limitations.

Gnd speed-KT	75	100	150	200	250	300
7.2% V/V (fpm)	547	729	1094	1458	1823	2187

ALT/HEIGHT CONVERSION	
QNH	(QFE)
<b>3610'</b>	<b>(3296' - 1000m)</b>

**UEEE/YKS**  
**YAKUTSK**

**JEPPesen**

16 NOV 18

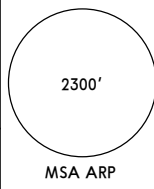
**10-3U**

**YAKUTSK, RUSSIA**

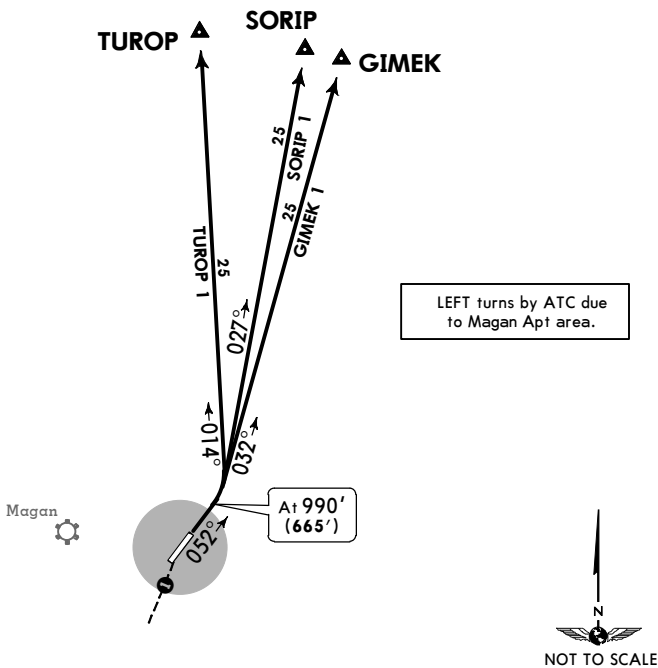
**SID**

Apt Elev  
**328'**

QNH on request (QFE)  
 Trans level: FL50  
 FL60 if pressure is less than 751 mm (1001.3 hPa)  
 FL70 if pressure is less than 724 mm (965.3 hPa)  
 Trans alt: 3610' (3285')  
 Crossing altitudes at AWY entry points by ATC.



**GIMEK 1**  
**SORIP 1**  
**TUROP 1**  
**RWY 05R DEPARTURES**



**1** 218° from ARP within 4.3 NM do not fly EAST below 2300' (1975').

ALT/HEIGHT CONVERSION	
QNH	(QFE)
990'	(665' - 200m)
2300'	(1975' - 600m)
3610'	(3285' - 1000m)

UEEE/YKS  
YAKUTSK

JEPPESSEN

YAKUTSK, RUSSIA

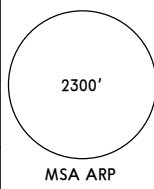
16 NOV 18

10-3V

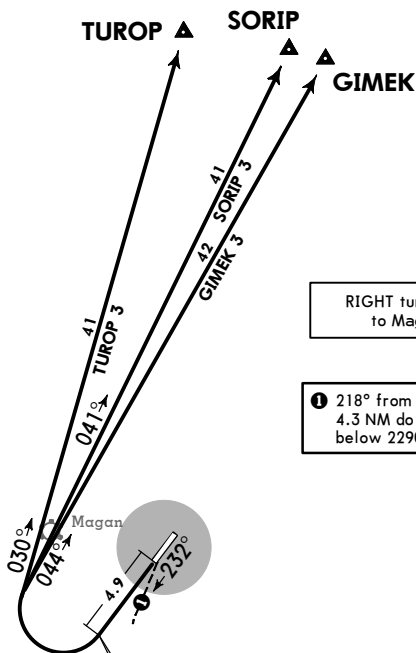
SID

Apt Elev  
328'

QNH on request (QFE)  
Trans level: FL50  
FL60 if pressure is less than 751 mm (1001.3 hPa)  
FL70 if pressure is less than 724 mm (965.3 hPa)  
Trans alt: 3610' (3296')  
1. Crossing altitudes at AWY entry points by ATC.  
2. For noise abatement procedures refer to 10-1P pages.



GIMEK 3  
SORIP 3  
TUROP 3  
RWY 23L DEPARTURES



RIGHT turns by ATC due to Magan Apt area.

① 218° from ARP within 4.3 NM do not fly EAST below 2290' (1976').

At  
2290' (1976')  
but not before  
4.9 NM  
from THR 05R



ALT/HEIGHT CONVERSION	
QNH	(QFE)
2290'	(1976' - 600m)
3610'	(3296' - 1000m)

**UEEE/YKS**  
**YAKUTSK**

**JEPPESEN**

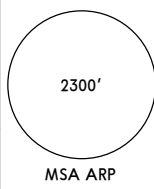
16 NOV 18 (10-3V)

**YAKUTSK, RUSSIA**

**SID**

Apt Elev  
**328'**

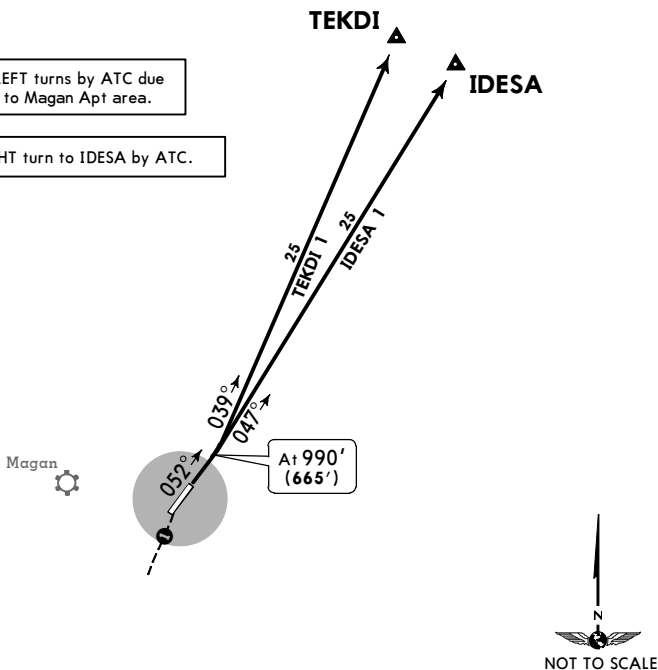
QNH on request (QFE)  
Trans level: FL50  
FL60 if pressure is less than 751 mm (1001.3 hPa)  
FL70 if pressure is less than 724 mm (965.3 hPa)  
Trans alt: 3610' (3285')  
Crossing altitudes at AWY entry points by ATC.



**IDESA 1**  
**TEKDI 1**  
**RWY 05R DEPARTURES**

LEFT turns by ATC due to Magan Apt area.

RIGHT turn to IDESA by ATC.



① 218° from ARP within 4.3 NM do not fly EAST below 2300' (1975').

ALT/HEIGHT CONVERSION	
QNH	(QFE)
990'	(665' - 200m)
2300'	(1975' - 600m)
3610'	(3285' - 1000m)

**UEEE/YKS**  
**YAKUTSK**

**JEPPesen**

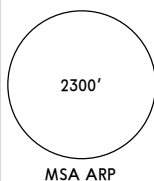
**YAKUTSK, RUSSIA**

16 NOV 18 **(10-3V2)**

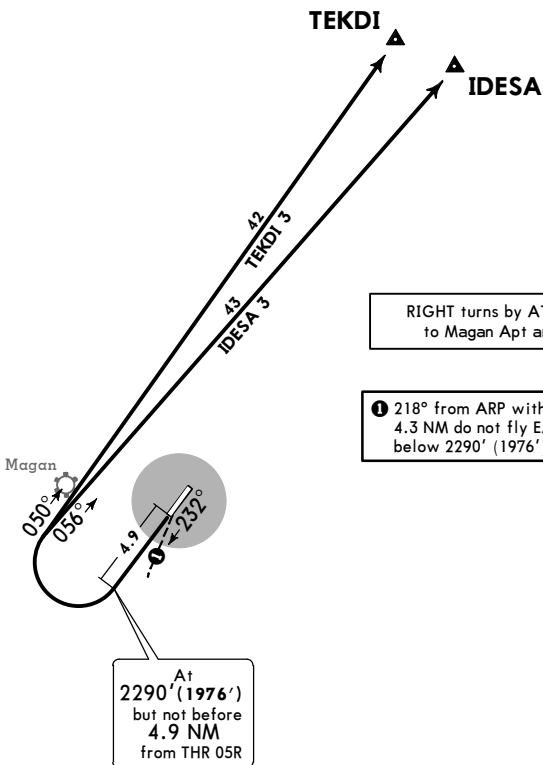
**SID**

Apt Elev  
**328'**

QNH on request (QFE)  
Trans level: FL50  
FL60 if pressure is less than 751 mm (1001.3 hPa)  
FL70 if pressure is less than 724 mm (965.3 hPa)  
Trans alt: 3610' (3296')  
1. Crossing altitudes at AWY entry points by ATC.  
2. For noise abatement procedures refer to 10-1P pages.



**IDESA 3**  
**TEKDI 3**  
**RWY 23L DEPARTURES**



ALT/HEIGHT CONVERSION	
QNH	(QFE)
2290'	(1976' - 600m)
3610'	(3296' - 1000m)

**UEEE/YKS**  
**YAKUTSK**

**JEPPESSEN**

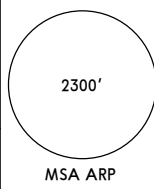
**YAKUTSK, RUSSIA**

16 NOV 18 **(10-3V3)**

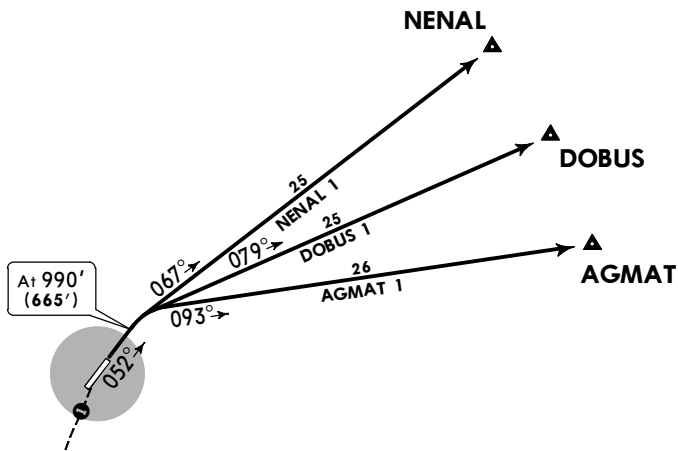
**SID**

Apt Elev  
**328'**

QNH on request (QFE)  
 Trans level: FL50  
 FL60 if pressure is less than 751 mm (1001.3 hPa)  
 FL70 if pressure is less than 724 mm (965.3 hPa)  
 Trans alt: 3610' (3285')  
 Crossing altitudes at AWY entry points by ATC.



**AGMAT 1**  
**DOBUS 1**  
**NENAL 1**  
**RWY 05R DEPARTURES**



**1** 218° from ARP within 4.3 NM do not fly EAST below 2300' (1975').

ALT/HEIGHT CONVERSION	
QNH	(QFE)
990'	(665' - 200m)
2300'	(1975' - 600m)
3610'	(3285' - 1000m)

UEEE/YKS  
YAKUTSK

JEPPESEN

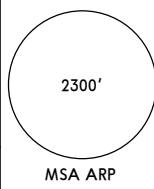
YAKUTSK, RUSSIA

16 NOV 18 (10-3V4)

SID

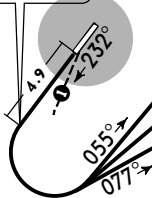
Apt Elev  
328'

QNH on request (QFE)  
Trans level: FL50  
FL60 if pressure is less than 751 mm (1001.3 hPa)  
FL70 if pressure is less than 724 mm (965.3 hPa)  
Trans alt: 3610' (3296')  
1. Crossing altitudes at AWY entry points by ATC.  
2. For noise abatement procedures refer to 10-1P pages.



AGMAT 3  
DOBUS 3  
NENAL 3  
RWY 23L DEPARTURES

At  
2290' (1976')  
but not before  
4.9 NM  
from THR 05R



NENAL

DOBUS

AGMAT



① 218° from ARP within  
4.3 NM do not fly EAST  
below 2290' (1976').

ALT/HEIGHT CONVERSION	
QNH	(QFE)
2290' (1976' - 600m)	
3610' (3296' - 1000m)	



**UEEE/YKS**  
**YAKUTSK**

**JEPPESSEN**

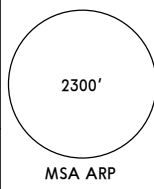
**YAKUTSK, RUSSIA**

16 NOV 18 (10-3W)

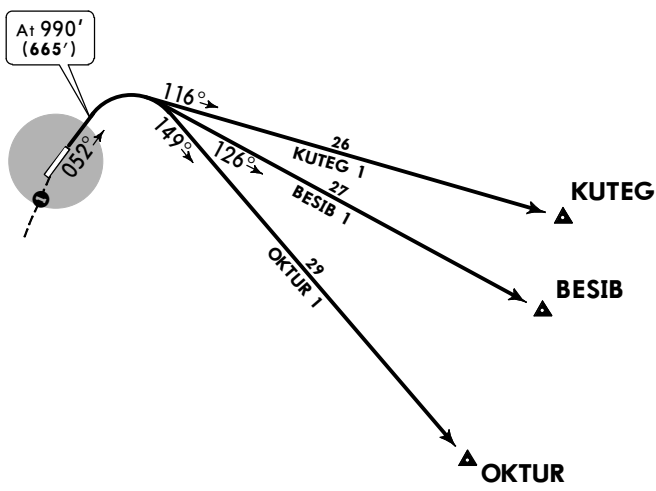
**SID**

Apt Elev  
**328'**

QNH on request (QFE)  
 Trans level: FL50  
 FL60 if pressure is less than 751 mm (1001.3 hPa)  
 FL70 if pressure is less than 724 mm (965.3 hPa)  
 Trans alt: 3610' (3285')  
 Crossing altitudes at AWY entry points by ATC.



**BESIB 1**  
**KUTEG 1**  
**OKTUR 1**  
**RWY 05R DEPARTURES**



**1** 218° from ARP within 4.3 NM do not fly EAST below 2300' (1975').

ALT/HEIGHT CONVERSION	
QNH	(QFE)
990'	(665' - 200m)
2300'	(1975' - 600m)
3610'	(3285' - 1000m)

**UEEE/YKS**  
**YAKUTSK**

**JEPPESSEN**

**YAKUTSK, RUSSIA**

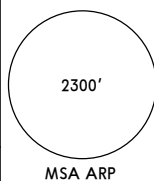
16 NOV 18

(10-3X)

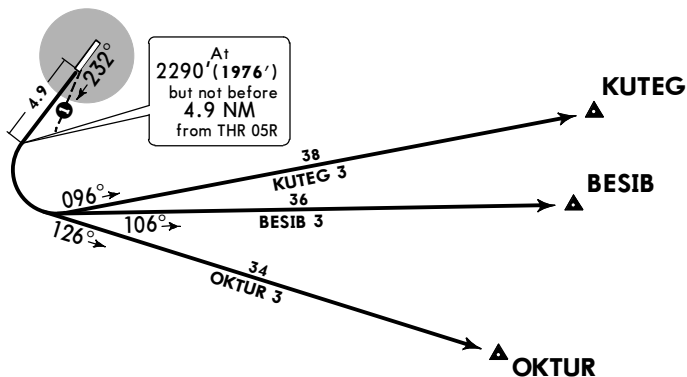
**SID**

Apt Elev  
**328'**

QNH on request (QFE)  
 Trans level: FL50  
 FL60 if pressure is less than 751 mm (1001.3 hPa)  
 FL70 if pressure is less than 724 mm (965.3 hPa)  
 Trans alt: 3610' (3296')  
 1. Crossing altitudes at AWY entry points by ATC.  
 2. For noise abatement procedures refer to 10-1P pages.



**BESIB 3**  
**KUTEG 3**  
**OKTUR 3**  
**RWY 23L DEPARTURES**



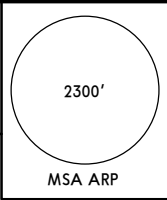
① 218° from ARP within 4.3 NM do not fly EAST below 2290' (1976').

ALT/HEIGHT CONVERSION	
QNH	(QFE)
2290'	(1976' - 600m)
3610'	(3296' - 1000m)

**UEEE/YKS**  
**YAKUTSK**

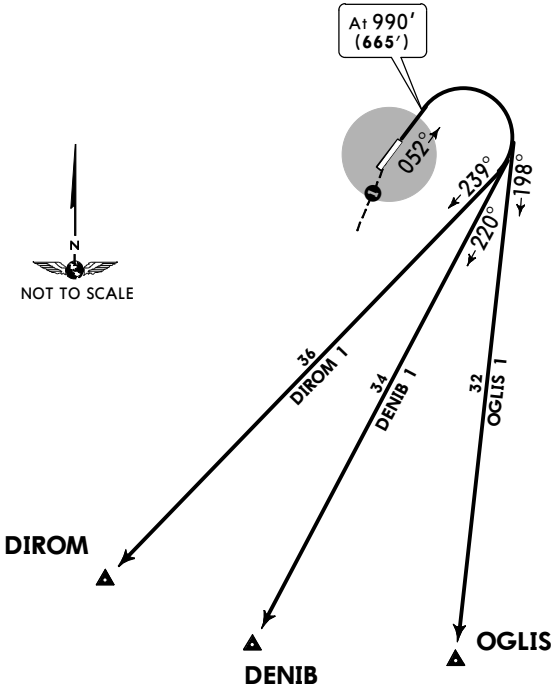
**JEPPESSEN**  
 16 NOV 18 (10-3X1)

**YAKUTSK, RUSSIA**  
**SID**



QNH on request (QFE)  
 Trans level: FL50  
 FL60 if pressure is less than 751 mm (1001.3 hPa)  
 FL70 if pressure is less than 724 mm (965.3 hPa)  
 Apt Elev 328'  
 Trans alt: 3610' (3285')  
 Crossing altitudes at AWY entry points by ATC.

**DENIB 1**  
**DIROM 1**  
**OGLIS 1**  
**RWY 05R DEPARTURES**



① 218° from ARP within 4.3 NM do not fly EAST below 2300' (1975').

ALT/HEIGHT CONVERSION	
QNH	(QFE)
990'	(665' - 200m)
2300'	(1975' - 600m)
3610'	(3285' - 1000m)

**UEEE/YKS**  
**YAKUTSK**

**JEPPESEN**

**YAKUTSK, RUSSIA**

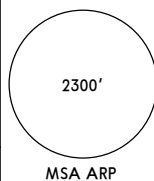
16 NOV 18

(10-3X2)

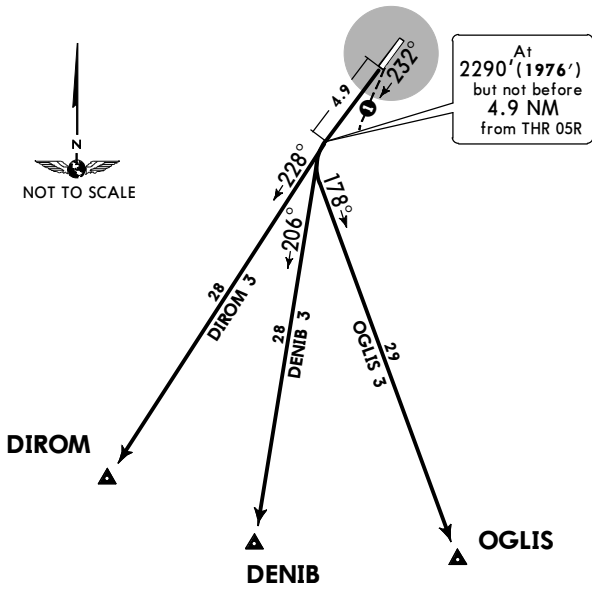
**SID**

Apt Elev  
**328'**

QNH on request (QFE)  
 Trans level: FL50  
 FL60 if pressure is less than 751 mm (1001.3 hPa)  
 FL70 if pressure is less than 724 mm (965.3 hPa)  
 Trans alt: 3610' (3296')  
 1. Crossing altitudes at AWY entry points by ATC.  
 2. For noise abatement procedures refer to 10-1P pages.



**DENIB 3**  
**DIROM 3**  
**OGLIS 3**  
**RWY 23L DEPARTURES**



**①** 218° from ARP within 4.3 NM do not fly EAST below 2290' (1976').

ALT/HEIGHT CONVERSION	
QNH	(QFE)
2290'	(1976' - 600m)
3610'	(3296' - 1000m)

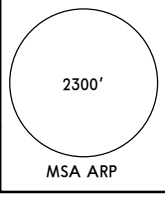
**UEEE/YKS**  
**YAKUTSK**

**JEPPESSEN**  
16 NOV 18 **(10-3X3)**

**YAKUTSK, RUSSIA**  
**SID**

Apt Elev  
**328'**

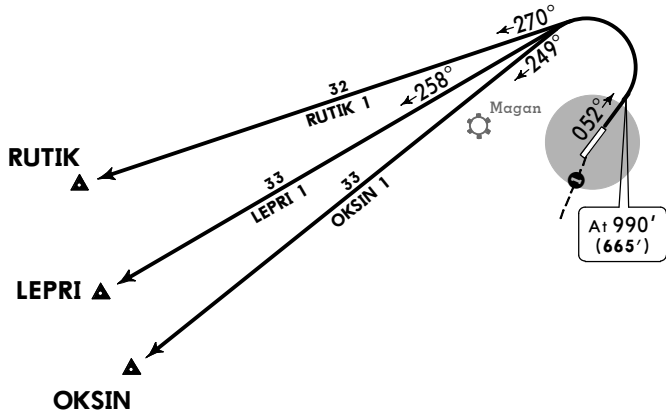
QNH on request (QFE)  
Trans level: FL50  
FL60 if pressure is less than 751 mm (1001.3 hPa)  
FL70 if pressure is less than 724 mm (965.3 hPa)  
Trans alt: 3610' (**3285'**)  
Crossing altitudes at AWY entry points by ATC.



**LEPRI 1**  
**OXSIN 1**  
**RUTIK 1**  
**RWY 05R DEPARTURES**

LEFT turns by ATC due to Magan Apt area.

RIGHT turn to LEPRI, OXSIN and RUTIK by ATC.



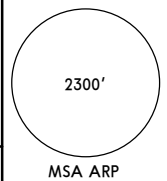
① 218° from ARP within 4.3 NM do not fly EAST below 2300' (1975').

ALT/HEIGHT CONVERSION	
QNH	(QFE)
990'	(665' - 200m)
2300'	(1975' - 600m)
3610'	(3285' - 1000m)

UEEE/YKS  
YAKUTSK

16 NOV 18 **10-3X4**

YAKUTSK, RUSSIA  
**SID**

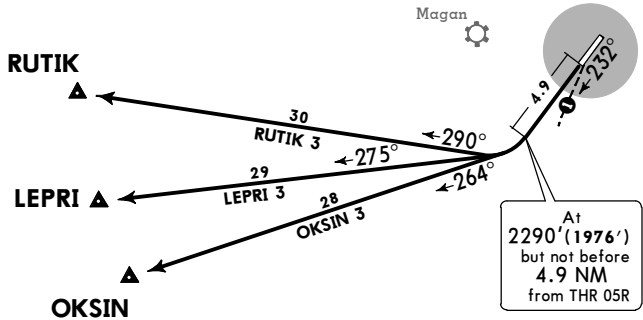


QNH on request (QFE)  
Trans level: FL50  
FL60 if pressure is less than 751 mm (1001.3 hPa)  
FL70 if pressure is less than 724 mm (965.3 hPa)  
Trans alt: 3610' (3296')  
1. Crossing altitudes at AWY entry points by ATC.  
2. For noise abatement procedures refer to 10-1P pages.

**LEPRI 3  
OKSIN 3  
RUTIK 3  
RWY 23L DEPARTURES**

RIGHT turns by ATC due to Magan Apt area.

LEFT turn to LEPRI, OKSIN and RUTIK by ATC.



① 218° from ARP within 4.3 NM do not fly EAST below 2290' (1976').

ALT/HEIGHT CONVERSION	
QNH	(QFE)
2290' (1976' - 600m)	
3610' (3296' - 1000m)	

**UEEE/YKS**  
**YAKUTSK**

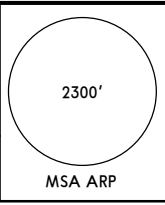


16 NOV 18 **(10-3X5)**

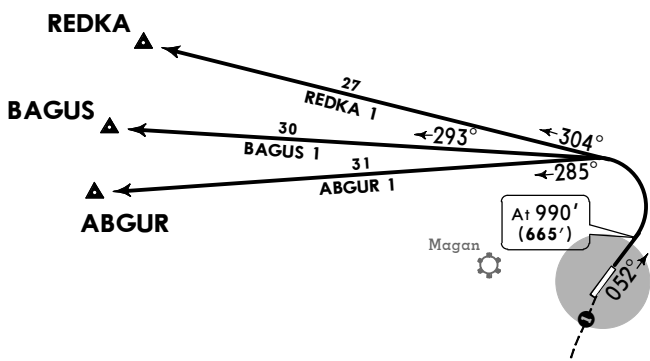
**YAKUTSK, RUSSIA**

**SID**

Apt Elev **328'**  
 QNH on request (QFE)  
 Trans level: FL50  
 FL60 if pressure is less than 751 mm (1001.3 hPa)  
 FL70 if pressure is less than 724 mm (965.3 hPa)  
 Trans alt: 3610' (**3285'**)  
 Crossing altitudes at AWY entry points by ATC.



**ABGUR 1**  
**BAGUS 1**  
**REDKA 1**  
**RWY 05R DEPARTURES**



LEFT turns by ATC due to Magan Apt area.

RIGHT turn to ABGUR, BAGUS and REDKA by ATC.



① 218° from ARP within 4.3 NM do not fly EAST below 2300' (1975').

ALT/HEIGHT CONVERSION	
QNH	(QFE)
990'	(665' - 200m)
2300'	(1975' - 600m)
3610'	(3285' - 1000m)

UEEE/YKS  
YAKUTSK



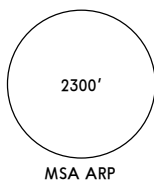
16 NOV 18 (10-3X6)

YAKUTSK, RUSSIA

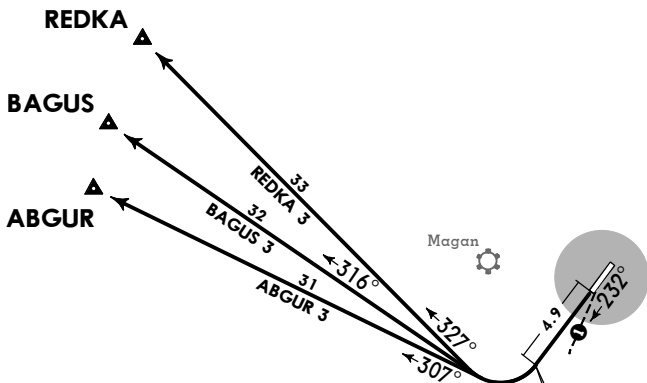
SID

Apt Elev  
328'

QNH on request (QFE)  
Trans level: FL50  
FL60 if pressure is less than 751 mm (1001.3 hPa)  
FL70 if pressure is less than 724 mm (965.3 hPa)  
Trans alt: 3610' (3296')  
1. Crossing altitudes at AWY entry points by ATC.  
2. For noise abatement procedures refer to 10-1P pages.



ABGUR 3  
BAGUS 3  
REDKA 3  
RWY 23L DEPARTURES



RIGHT turns by ATC due to Magan Apt area.

LEFT turn to ABGUR, BAGUS and REDKA by ATC.

At 2290' (1976') but not before 4.9 NM from THR 05R

① 218° from ARP within 4.3 NM do not fly EAST below 2290' (1976').



ALT/HEIGHT CONVERSION	
QNH	(QFE)
2290'	(1976' - 600m)
3610'	(3296' - 1000m)



UEEE/YKS  
YAKUTSK

JEPPesen

YAKUTSK, RUSSIA

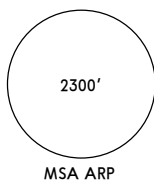
16 NOV 18

(10-3X7)

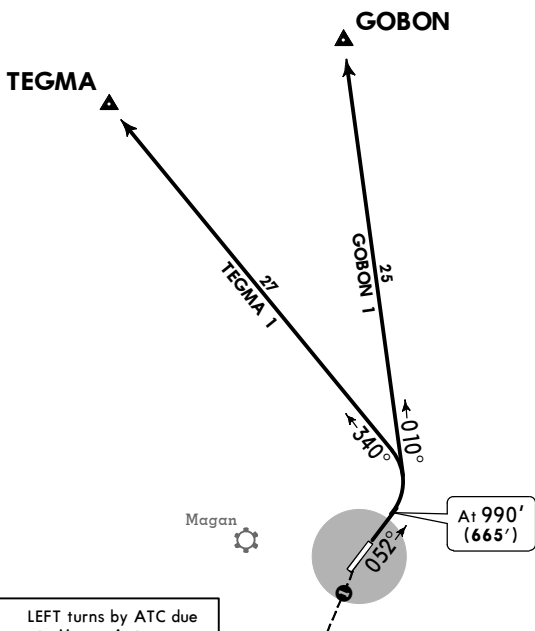
SID

Apt Elev  
328'

QNH on request (QFE)  
Trans level: FL50  
FL60 if pressure is less than 751 mm (1001.3 hPa)  
FL70 if pressure is less than 724 mm (965.3 hPa)  
Trans alt: 3610' (3285')  
Crossing altitudes at AWY entry points by ATC.



GOBON 1  
TEGMA 1  
RWY 05R DEPARTURES



LEFT turns by ATC due to Magan Apt area.

RIGHT turn to TEGMA by ATC.



1 218° from ARP within 4.3 NM do not fly EAST below 2300' (1975').

ALT/HEIGHT CONVERSION	
QNH	(QFE)
990'	(665' - 200m)
2300'	(1975' - 600m)
3610'	(3285' - 1000m)

UEEE/YKS  
YAKUTSK

JEPPesen

16 NOV 18

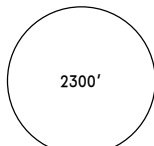
10-3X8

YAKUTSK, RUSSIA

SID

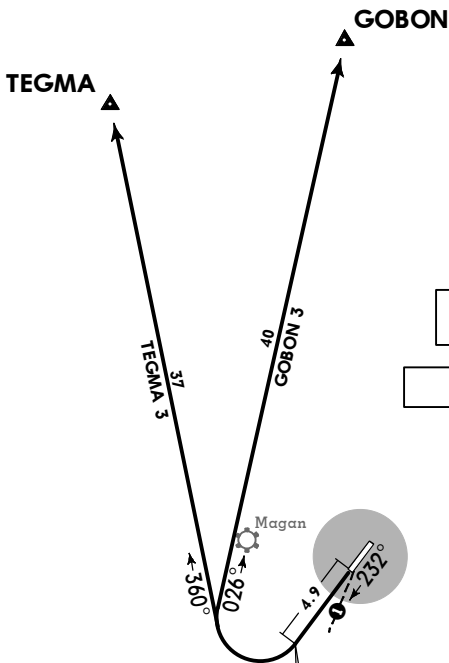
Apt Elev  
328'

QNH on request (QFE)  
Trans level: FL50  
FL60 if pressure is less than 751 mm (1001.3 hPa)  
FL70 if pressure is less than 724 mm (965.3 hPa)  
Trans alt: 3610' (3296')  
1. Crossing altitudes at AWY entry points by ATC.  
2. For noise abatement procedures refer to 10-1P pages.



MSA ARP

GOBON 3  
TEGMA 3  
RWY 23L DEPARTURES



RIGHT turns by ATC due to Magan Apt area.

LEFT turn to TEGMA by ATC.

1 218° from ARP within 4.3 NM do not fly EAST below 2290' (1976').

At 2290' (1976') but not before 4.9 NM from THR 05R



ALT/HEIGHT CONVERSION	
QNH	(QFE)
2290'	(1976' - 600m)
3610'	(3296' - 1000m)

**UEEE/YKS**

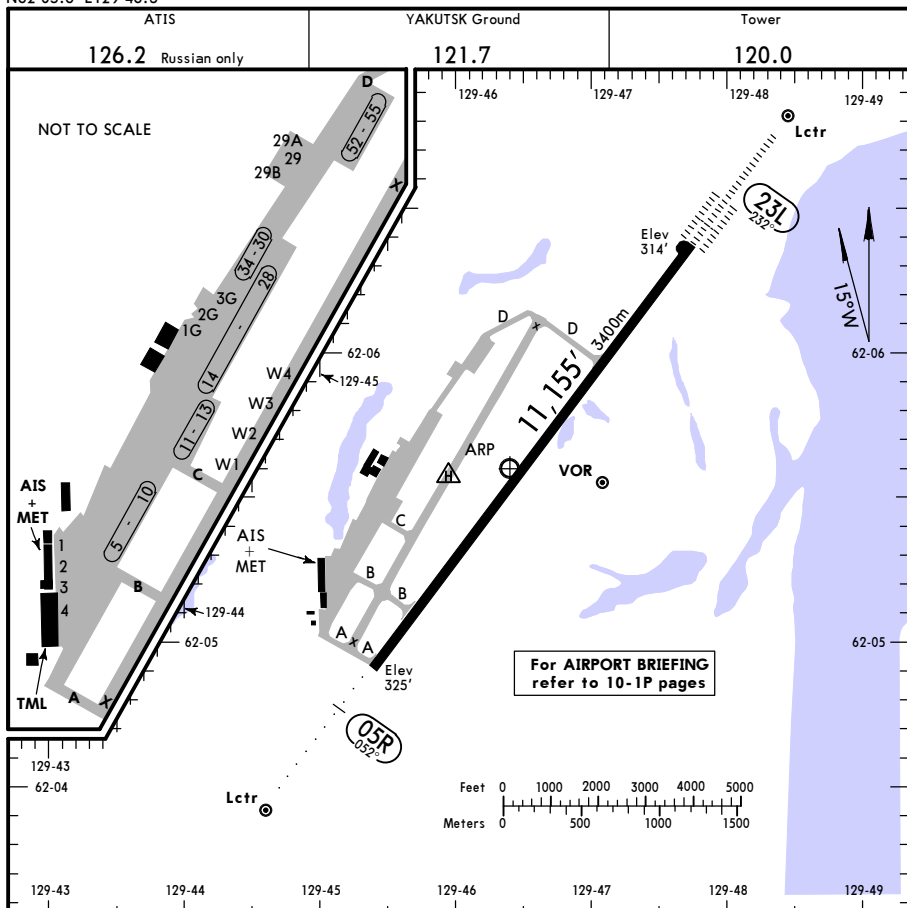
Apt Elev **328'**  
N62 05.6 E129 46.3

**JEPESEN**

5 OCT 18 **(10-9)** Eff 11 Oct

**YAKUTSK, RUSSIA**

**YAKUTSK**



For AIRPORT BRIEFING refer to 10-1P pages

**ADDITIONAL RUNWAY INFORMATION**

RWY					USABLE LENGTHS		TAKE-OFF	WIDTH
	HIRL (60m)	CL (15m)	ALS	PAPI-L (3.17°)	Threshold	Glide Slope		
05R								197'
23L						10,183' 3104m	②	60m

① PAPI-L (angle 3.00°)

② TAKE-OFF RUN AVAILABLE

RWY 05R

From rwy head 11155' (3400m)  
twy B int 9350' (2850m)

RWY 23L

From rwy head 11155' (3400m)  
twy D int 8038' (2450m)

**TAKE-OFF**

**AIR CARRIER (JAA)**  
**All Rwys**

**LVP must be in force**

	RL & CL	RCLM (DAY only) or RL	RCLM (DAY only) or RL
A			
B	200m (150m)	250m	400m
C			
D	250m (200m)	300m	

RVR in parentheses if TDZ RVR is supplemented by Mid and/or Rollout RVR.

STRAIGHT-IN RWY		A	B	C	D
05R	GLS	523'(200')	523'(200')	523'(200')	523'(200')
	FULL	R1000m	R1000m	R1000m	R1000m
	ALS out	R1200m	R1200m	R1200m	R1200m
	① RNAV (GNSS)	760'(435')	760'(435')	760'(435')	760'(435')
		R1500m	R1500m	R1900m	R1900m
	ALS out	R1500m	R1500m	R2100m	R2100m
	① 2 NDB	760'(435')	760'(435')	760'(435')	760'(435')
	with FAF	R1500m	R1500m	R1900m	R1900m
	ALS out	R1500m	R1500m	R2100m	R2100m
	2 NDB	1380'(1055')	1380'(1055')	1380'(1055')	1380'(1055')
w/o FAF	R4800m	R4800m	R5000m	R5000m	
ALS out	R5000m	R5000m	R5000m	R5000m	
① V Lctr	1290'(965')	1290'(965')	1290'(965')	1290'(965')	
with FAF	R1500m	R1500m	R2400m	R2400m	
V Lctr	1320'(995')	1320'(995')	1320'(995')	1320'(995')	
w/o FAF	R4500m	R4500m	R4700m	R4700m	
ALS out	R4700m	R4700m	R4900m	R4900m	
23L	CAT 2 ILS	414'(100')	414'(100')	414'(100')	419'(105')
		RA102' R300m	RA102' R300m	RA102' R300m	RA107' R300m
	ILS	514'(200')	514'(200')	514'(200')	514'(200')
	FULL	R550m	R550m	R550m	R550m
	TDZ or CL out	② R550m	② R550m	② R550m	② R550m
	ALS out	R1200m	R1200m	R1200m	R1200m
	③ GLS	514'(200')	514'(200')	514'(200')	514'(200')
	FULL	R550m	R550m	R550m	R550m
	TDZ or CL out	② R550m	② R550m	② R550m	② R550m
	ALS out	R1200m	R1200m	R1200m	R1200m
	④ GLS	531'(217')	541'(227')	551'(237')	561'(247')
	FULL	R550m	R550m	R550m	R550m
	TDZ or CL out	② R550m	② R550m	② R550m	② R550m
	ALS out	R1200m	R1200m	R1200m	R1300m
	LOC	NOT AUTH	NOT AUTH	NOT AUTH	NOT AUTH
	① ⑤ RNAV (GNSS)	NOT AUTH	NOT AUTH	NOT AUTH	680'(366')
	ALS out	NOT AUTH	NOT AUTH	NOT AUTH	R1000m R1700m
① ⑥ RNAV (GNSS)	NOT AUTH	NOT AUTH	680'(366')	NOT AUTH	
ALS out	NOT AUTH	NOT AUTH	R1000m R1700m	NOT AUTH	
① ④ RNAV (GNSS)	680'(366')	680'(366')	690'(376')	730'(416')	
	R1000m	R1000m	R1000m	R1200m	
ALS out	R1500m	R1500m	R1700m	R1900m	
① 2 NDB	660'(346')	660'(346')	660'(346')	660'(346')	
with FAF	R900m	R900m	R900m	R900m	
ALS out	R1500m	R1500m	R1600m	R1600m	
① 2 NDB	670'(356')	670'(356')	670'(356')	670'(356')	
w/o FAF	R1000m	R1000m	R1200m	R1200m	
ALS out	R1600m	R1600m	R1600m	R1600m	

- ① Continuous Descent Final Approach.
- ② W/o HUD/AP/FD: RVR 750m.
- ③ Missed apch climb gradient mim 3.0%.
- ④ Missed apch climb gradient mim 2.5%.
- ⑤ Missed apch climb gradient mim 2.7%.
- ⑥ Missed apch climb gradient mim 2.6%.

UEEE/YKS

21 DEC 18 **JEPPESEN** **(10-9S)** **Eff 3 Jan**

**Standard**  
**YAKUTSK, RUSSIA**  
**YAKUTSK**

<b>CIRCLE-TO-LAND ①</b>	<b>100 KT</b>	<b>135 KT</b>	<b>180 KT</b>	<b>205 KT</b>
	<b>830'</b> (502') V1500m	<b>1090'</b> (762') V1600m	<b>1680'</b> (1352') V2400m	<b>1680'</b> (1352') V3600m

① After GLS or RNAV (GNSS).

**TAKE-OFF**

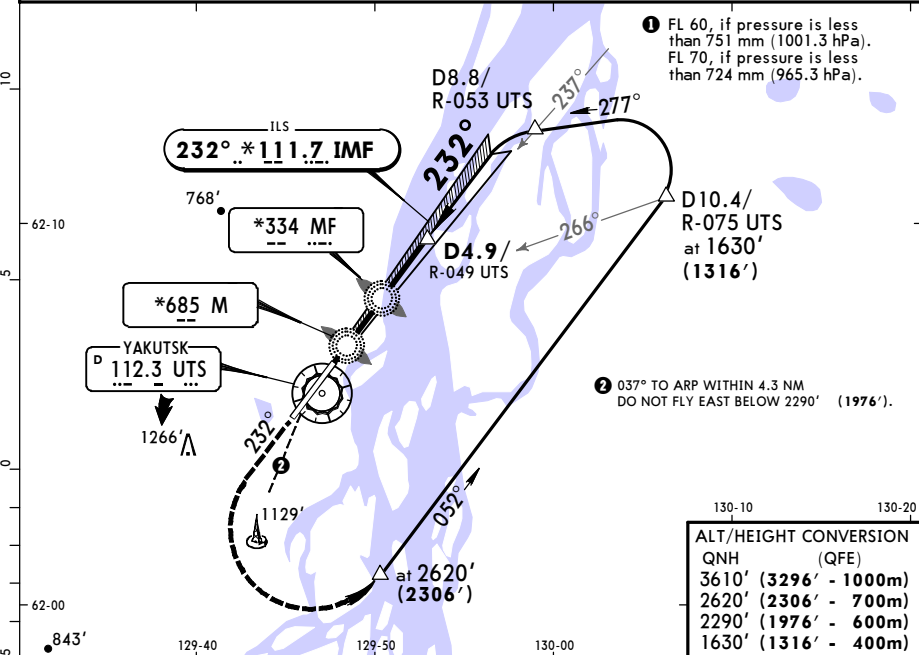
	Low Visibility Take-off				Day: RL or RCLM Night: RL or CL	Day: RL or RCLM Night: RL or CL	Adequate vis ref (Day only)
	HIRL, CL & relevant RVR	RL, CL & relevant RVR	RL & CL	Day: RL & RCLM Night: RL or CL			
<b>A</b>							
<b>B</b>	TDZ, MID, RO R125m	TDZ, MID, RO R150m	R200m	R300m	400m	500m	
<b>C</b>							
<b>D</b>							

**UEEE/YKS**  
**YAKUTSK**

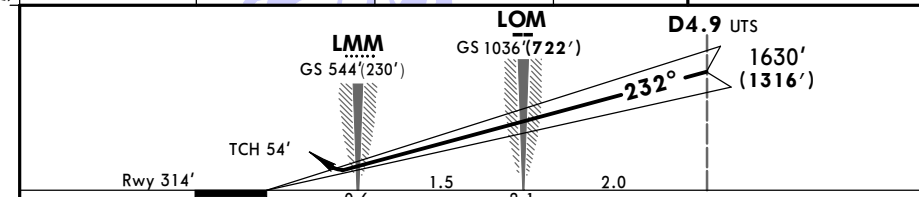
**JEPPESSEN**  
5 OCT 18 **(11-1)** Eff 11 Oct

**YAKUTSK, RUSSIA**  
**ILS Rwy 23L**

BRIEFING STRIP™	ATIS	YAKUTSK Approach	YAKUTSK Radar (APP/TWR)	YAKUTSK Tower	Ground
	126.2 Russian only	129.3	120.3	120.0	121.7
	LOC IMF *111.7	Final Apch Crs 232°	GS LOM 1036'(722')	ILS DA(H) 514'(200')	Apt Elev 328' Rwy 314'
<p><b>MISSED APCH:</b> Climb on 232° to 2290'(1976'), then turn LEFT onto 052° climbing to 2620'(2306'), then according to chart.</p>					
Alt Set: MM (hPa on req)		QNH on req (QFE)	Trans level: FL 50	Trans alt: 3610'(3296')	



ALT/HEIGHT CONVERSION	
QNH	(QFE)
3610' (3296' - 1000m)	
2620' (2306' - 700m)	
2290' (1976' - 600m)	
1630' (1316' - 400m)	



Gnd speed-Kts	70	90	100	120	140	160		2290' (1976')	on 232°	052°	2620' (2306')
GS	3.00°	372	478	531	637	743		849			LT

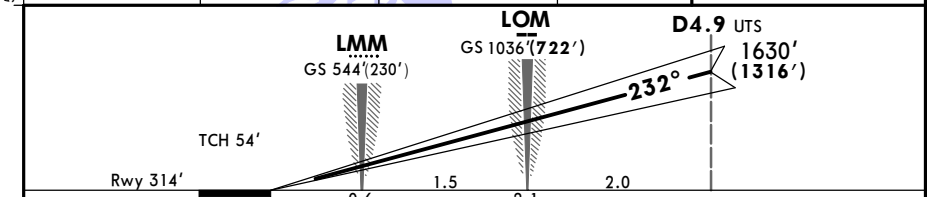
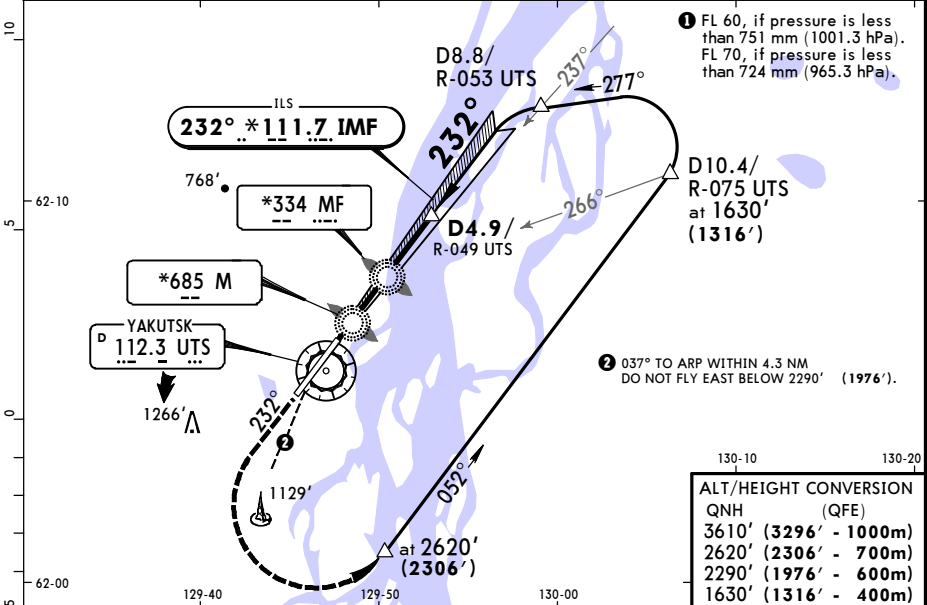
STRAIGHT-IN LANDING RWY 23L			
ILS		LOC (GS out)	
DA(H) 514'(200')			
FULL	TDZ or CL out	ALS out	
A			
B			
C	RVR 550m VIS 800m	RVR 720m VIS 800m	1200m
D			NOT AUTHORIZED

**UEEE/YKS**  
**YAKUTSK**

**JEPPESN**  
5 OCT 18 **(11-A)** Eff 11 Oct

**YAKUTSK, RUSSIA**  
**CAT II ILS Rwy 23L**

BRIEFING STRIP™	ATIS	YAKUTSK Approach	YAKUTSK Radar (APP/TWR)	YAKUTSK Tower	Ground
	126.2 <small>Russian only</small>	129.3	120.3	120.0	121.7
	LOC IMF *111.7	Final Apch Crs 232°	GS LOM 1036'(722')	CAT II ILS RA/DA(H) Refer to Minimums	Apt Elev 328' Rwy 314'
MISSED APCH: Climb on 232° to 2290'(1976'), then turn LEFT onto 052° climbing to 2620'(2306'), then according to chart.					<p>MSA ARP</p>
Alt Set: MM (hPa on req)		QNH on req (QFE)		Trans level: FL 50 ①	Trans alt: 3610'(3296')
Special Aircrew and Acft Certification Required.					



Gnd speed-Kts	70	90	100	120	140	160	HIALS-II	2290'	052°	2620'
GS	3.00°	372	478	531	637	743	PAPI	(1976') on 232°	LT	(2306')

STRAIGHT-IN LANDING RWY 23L CAT II ILS	
ABC <b>RA 102'</b> DA(H) 414'(100')	D <b>RA 107'</b> DA(H) 419'(105')

RVR 300m

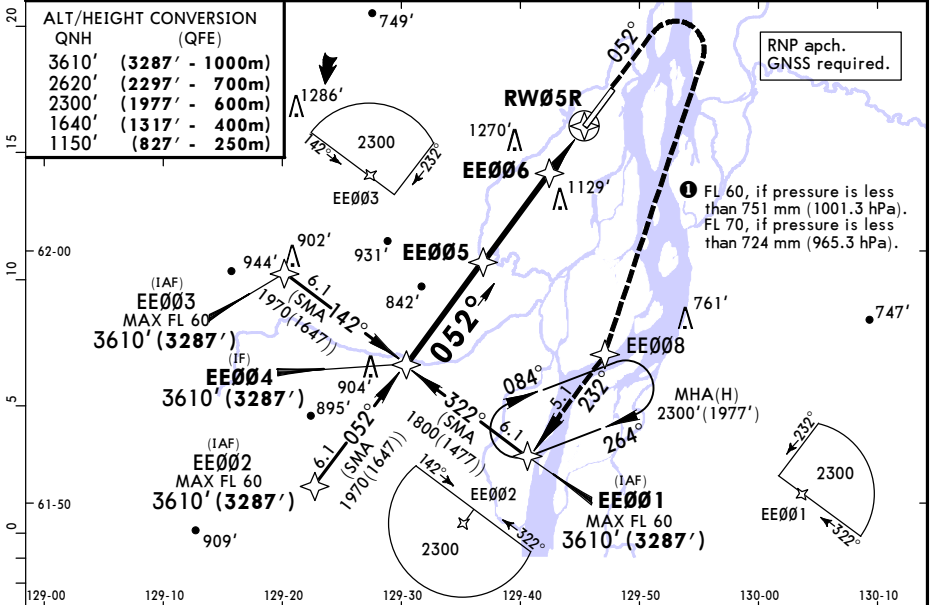
**UEEE/YKS**  
**YAKUTSK**

**JEPPesen**  
21 DEC 18  
Eff 3 Jan (12-1)

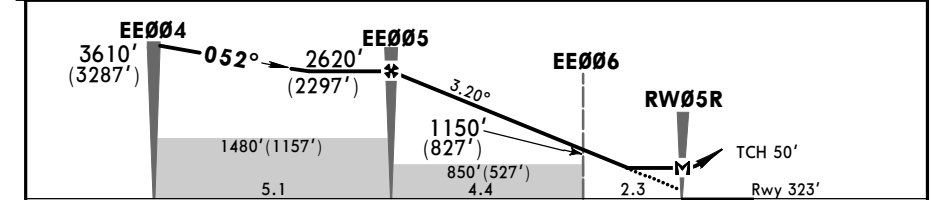
**YAKUTSK, RUSSIA**  
**RNAV (GNSS) Rwy 05R**

BRIEFING STRIP™	ATIS	YAKUTSK Approach	YAKUTSK Radar (APP/TWR)	YAKUTSK Tower	Ground
	126.2 Russian only	129.3	120.3	120.0	121.7
	RNAV	Final Apch Crs <b>052°</b>	Procedure Alt <b>EE005</b> 2620' (2297')	LNNAV MDA(H) 760' (437')	Apt Elev 328' Rwy 323'
<b>MISSED APCH:</b> Climb on 052° to 1640' (1317') or above, then turn RIGHT to EE008, then proceed to EE001 climbing to 3610' (3287') or above, then as directed.					TAA 25 NM IAF

Alt Set: MM (hPa on req)    QNH on req (QFE)    Trans level: FL 50 **1**    Trans alt: 3610' (3287')



DIST to RW05R	6.7	6.5	5.4	4.3	3.2	2.2	1.1
ALT (HAT)	2620' (2297')	2540' (2217')	2180' (1897')	1820' (1497')	1460' (1137')	1100' (777')	740' (417')



Gnd speed-Kts	70	90	100	120	140	160	ALS PAPI	MIM 1640' (1317') on 052°	EE008 RT
Descent Angle	3.20°	396	510	566	679	793			
MAP at RW05R									

	STRAIGHT-IN LANDING RWY 05R		CIRCLE-TO-LAND	
	LNNAV	ALS out	Max Kts	MDA(H)
A	RVR 1500m		100	830' (502') 1600m
B	VIS 1600m		135	1090' (762') 2000m
C	RVR 1800m		180	1680' (1352') 4800m
D	VIS 2000m		205	
	2400m			

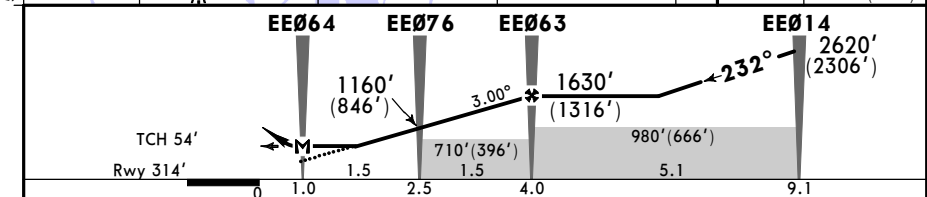
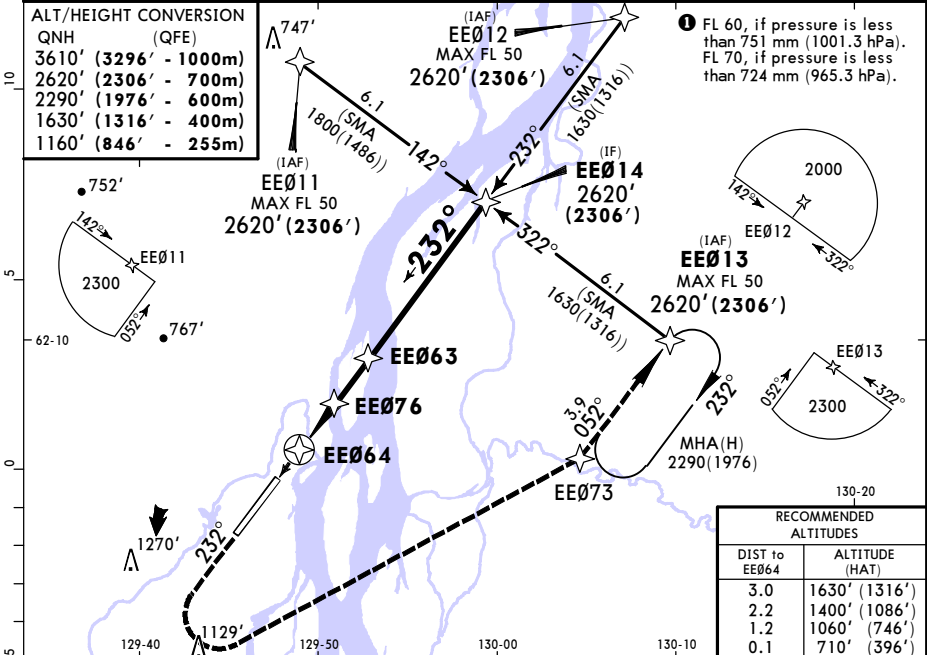


**UEEE/YKS**  
**YAKUTSK**

**JEPPESSEN**  
21 DEC 18  
Eff 3 Jan 12-2

**YAKUTSK, RUSSIA**  
**RNAV (GNSS) Rwy 23L**

BREEZING STRIP™	ATIS	YAKUTSK Approach	YAKUTSK Radar (APP/TWR)	YAKUTSK Tower	Ground
	126.2 Russian only	129.3	120.3	120.0	121.7
	RNAV	Final Apch Crs <b>232°</b>	Procedure Alt <b>EE063</b> 1630'(1316')	LNAV MDA(H) Refer to Minimums	Apt Elev 328'  Rwy 314'
<b>MISSED APCH: Climb on 232° to 1630'(1316') or above, then turn LEFT (MAX 225 KT) to EE073, then proceed to EE013 climbing to 2620'(2306') or above, then as directed.</b>					
Alt Set: MM (hPa on req)		QNH on req (QFE)		Trans level: FL 50 ①	Trans alt: 3610'(3296')
1. GNSS required. 2. RNP apch.					



Gnd speed-Kts	70	90	100	120	140	160	HIALS-II PAP:	MIM 1630' (1316') on 232°
Descent Angle	3.00°	372	478	531	637	743		
MAP at EE064								

PANS OPS	STRAIGHT-IN LANDING RWY 23L				CIRCLE-TO-LAND	
	Missed apch climb gradient mim 2.7%		Missed apch climb gradient mim 2.6%		Missed apch climb gradient mim 2.5%	
	MDA(H) 680'(366')		MDA(H) 680'(366')		MDA(H) 680'(366')	
A	ALS out	ALS out	ALS out	ALS out	Max Kts	830'(502') 1600m
B	NOT AUTHORIZED	NOT AUTHORIZED	RVR 720m VIS 800m	RVR 1500m VIS 1600m	135	1090'(762') 2000m
C	RVR 1500m VIS 1600m	RVR 1800m VIS 2000m	RVR 720m VIS 800m	RVR 1500m VIS 1600m	180	1680'(1352') 4800m
D	RVR 1500m VIS 1600m	RVR 1800m VIS 2000m	NOT AUTHORIZED	RVR 1500m VIS 1600m	205	

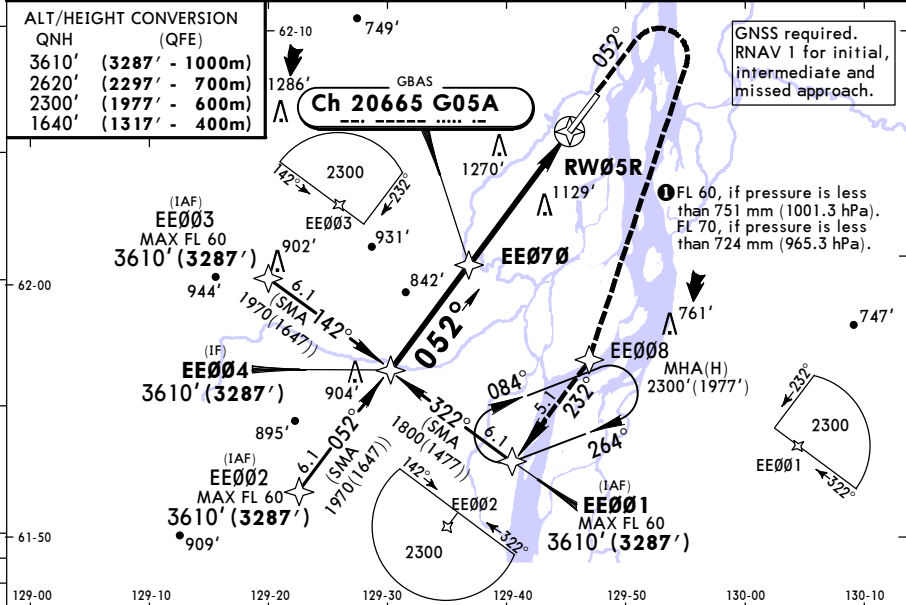
UEEE/YKS  
YAKUTSK

JEPESEN  
21 DEC 18  
Eff 3 Jan (12-40)

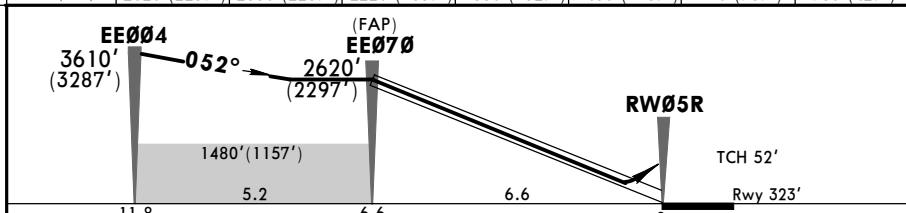
YAKUTSK, RUSSIA  
GLS Rwy 05R

ATIS 126.2 Russian only	YAKUTSK Approach 129.3	YAKUTSK Radar (APP/TWR) 120.3	YAKUTSK Tower 120.0	Ground 121.7
GBAS <b>Ch 20665</b> G05A	Final Apt Crs <b>052°</b>	Procedure Alt <b>EE070</b> 2620' (2297')	GLS DA(H) 523' (200')	Apt Elev 328' Rwy 323'
MISSED APCH: Climb on 052° to 1640' (1317') or above, then turn RIGHT to EE008, then proceed to EE001 climbing to 3610' (3287') or above, then as directed.				TAA 25 NM IAF

Alt Set: MM (hPa on req) QNH on req (QFE) Trans level: FL 50 Trans alt: 3610' (3287')



DIST to RW05R	6.6	6.5	5.4	4.3	3.2	2.2	1.1
ALT (HAT)	2620' (2297')	2580' (2257')	2220' (1897')	1850' (1527')	1480' (1157')	1110' (787')	750' (427')



Gnd speed-Kts	70	90	100	120	140	160	ALS PAPI	MIM 1640' (1317') on 052°	EE008 RT
Glide Path Angle	3.20°	396	510	566	679	793			
MAP at DA									

STRAIGHT-IN LANDING RWY 05R			CIRCLE-TO-LAND	
DA(H) 523' (200')			MDA(H)	
	FULL	ALS out	Max Kts	
A			100	830' (502') 1600m
B			135	1090' (762') 2000m
C	1200m		180	1680' (1352') 4800m
D			205	

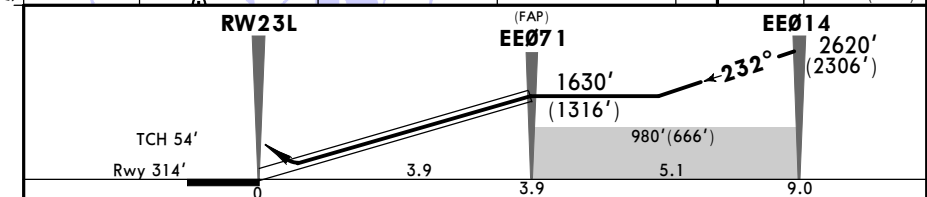
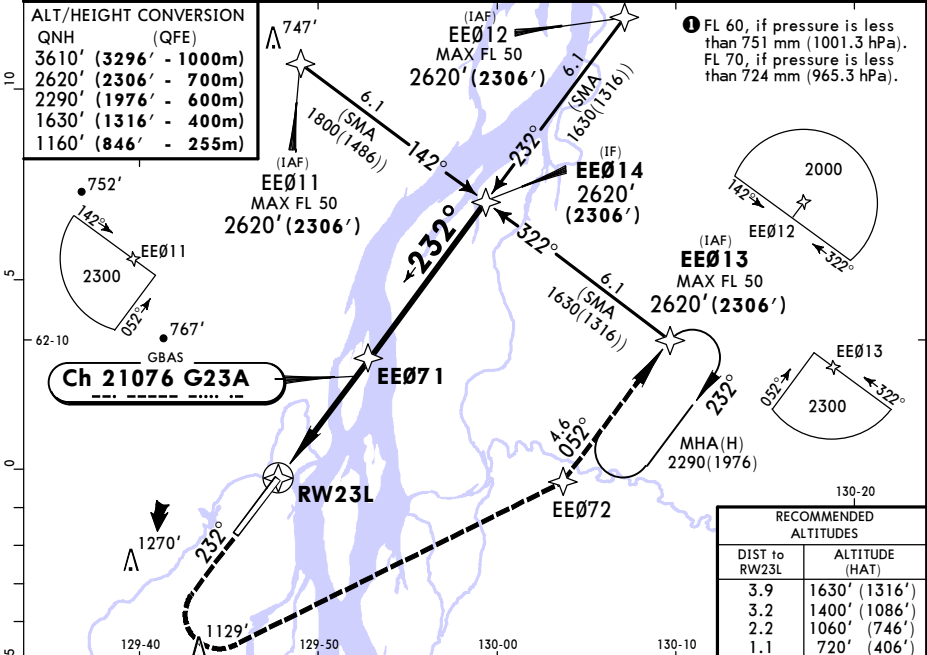
CHANGES: New Procedure.

**UEEE/YKS**  
**YAKUTSK**

**JEPPESEN**  
21 DEC 18  
Eff 3 Jan (12-41)

**YAKUTSK, RUSSIA**  
**GLS Rwy 23L**

BRIEFING STRIP™	ATIS	YAKUTSK Approach	YAKUTSK Radar (APP/TWR)	YAKUTSK Tower	Ground
	126.2 Russian only	129.3	120.3	120.0	121.7
	GBAS <b>Ch 21076</b> G23A	Final Apch Crs <b>232°</b>	Procedure Alt <b>EE071</b> 1630'(1316')	GLS DA(H) Refer to Minimums	Apt Elev 328' Rwy 314'
<b>MISSED APCH:</b> Climb on 232° to 1630'(1316') or above, then turn LEFT (MAX 225 KT) to EE072, then proceed to EE013 climbing to 2620'(2306') or above, then as directed. Do not turn before passing RW23L.					
Alt Set: MM (hPa on req) QNH on req (QFE) Trans level: FL 50 ① Trans alt: 3610'(3296')					
1. GNSS required. 2. RNAV 1.					



Gnd speed-Kts	70	90	100	120	140	160	HIALS-II PAP	MIM 1630' (1316') on 232°
Glide Path Angle	3.00°	372	478	531	637	743		
MAP at DA								

PANS OPS	STRAIGHT-IN LANDING RWY 23L						CIRCLE-TO-LAND		
	Missed apch climb gradient mim 3.0%			Missed apch climb gradient mim 2.5%			Max Kts	MDA(H)	
	DA(H) 514'(200')			DA(H) A: 531'(217') B: 541'(227') C: 551'(237') D: 561'(247')					
	FULL	TDZ or CL out	ALS out	FULL	TDZ or CL out	ALS out			
A							100	830'(502')	1600m
B	RVR 550m	RVR 720m	1200m	RVR 550m	RVR 720m	1200m	135	1090'(762')	2000m
C	VIS 800m	VIS 800m		VIS 800m	VIS 800m		180		
D							205	1680'(1352')	4800m

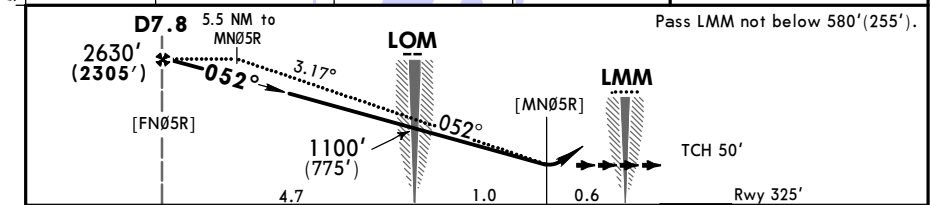
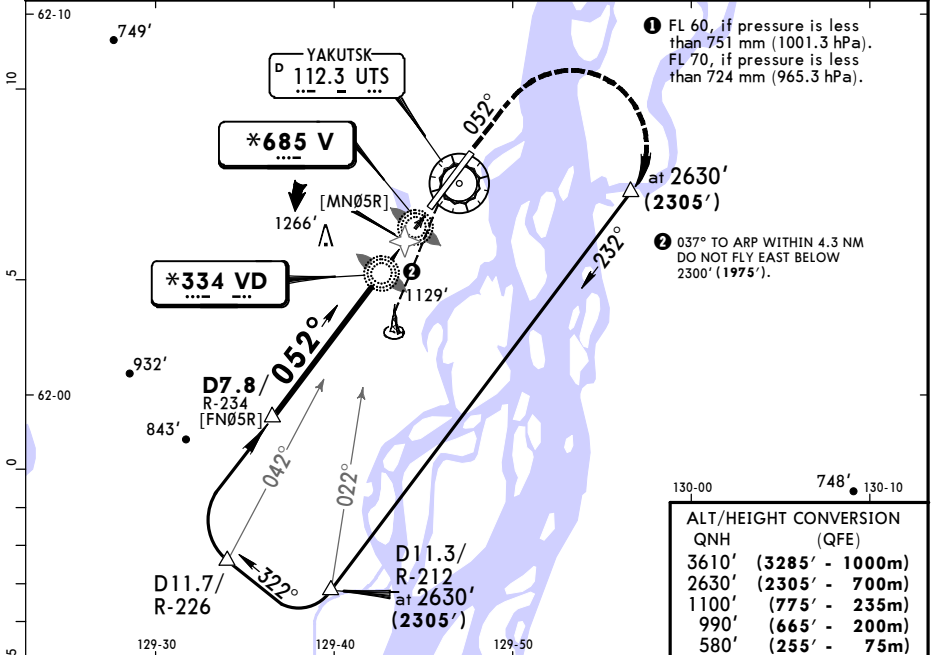
UEEE/YKS  
YAKUTSK

JEPPESEN  
5 OCT 18  
Eff 11 Oct (16-1)

YAKUTSK, RUSSIA  
2 NDB or NDB Rwy 05R

BRIEFING STRIP™	ATIS	YAKUTSK Approach	YAKUTSK Radar (APP/TWR)	YAKUTSK Tower	Ground
	126.2 Russian only	129.3	120.3	120.0	121.7
	2 NDB NDB Lctr VD *334	NDB Lctr V *685	Final Apch Crs 052°	Minimum Alt D7.8 2630'(2305')	MDA(H) Refer to Minimums
	Apt Elev 328' Rwy 325'				
<p><b>MISSED APCH:</b> Climb on 052° to 990'(665'), then turn RIGHT onto 232° climbing to 2630'(2305'), then according to chart.</p>					

Alt Set: MM (hPa on req) QNH on req (QFE) Trans level: FL 50 Trans alt: 3610'(3285')



Gnd speed-Kts	70	90	100	120	140	160	ALS	990' (665')	on 052°	232°	2630' (2305')
Descent Angle	3.17°	393	505	561	673	785	897	PAPI		RT	

STRAIGHT-IN LANDING RWY 05R												
2 NDB		V Lctr										
with FAF		w/o FAF		with FAF		w/o FAF						
MDA(H) 760'(435')		MDA(H) 1380'(1055')		MDA(H) 1290'(965')		MDA(H) 1320'(995')						
ALS out		ALS out		ALS out		ALS out						
A	2100m		3200m		3200m		3200m					
B												
C			4800m		4800m		4800m					
D	2400m											

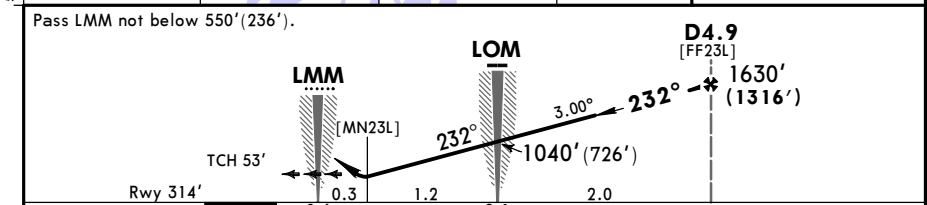
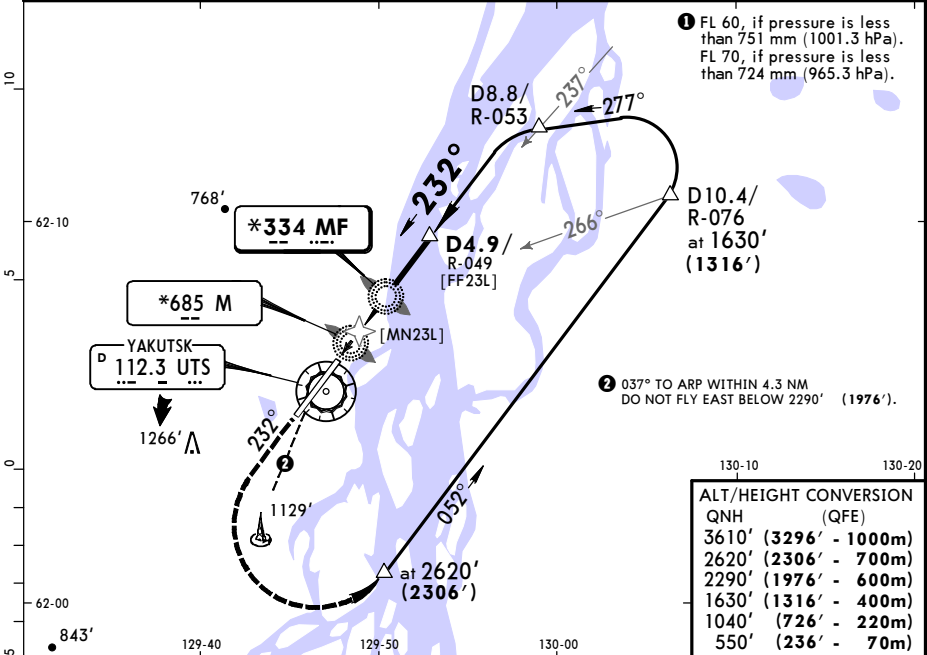
UEEE/YKS  
YAKUTSK

JEPPESEN  
5 OCT 18 (16-2) Eff 11 Oct

YAKUTSK, RUSSIA  
2 NDB Rwy 23L

BRIEFING STRIP™	ATIS	YAKUTSK Approach	YAKUTSK Radar (APP/TWR)	YAKUTSK Tower	Ground
	126.2 Russian only	129.3	120.3	120.0	121.7
	NDB MF *334	Final Apch Crs 232°	Minimum Alt D4.9 UTS 1630' (1316')	MDA(H) 660' (346')	Apt Elev 328' Rwy 314'
<p>MISSED APCH: Climb on 232° to 2290' (1976'), then turn LEFT onto 052° climbing to 2620' (2306'), then according to chart.</p>					<p>MSA ARP</p>

Alt Set: MM (hPa on req) QNH on req (QFE) Trans level: FL 50 ① Trans alt: 3610' (3296')



Gnd speed-Kts	70	90	100	120	140	160	HIALS-II	2290' (1976')	232°	052°	2620' (2306')
Descent Angle	3.00°	372	478	531	637	743	849	PAPI	↑	LT	↑

STRAIGHT-IN LANDING RWY 23L	
MDA(H) 660' (346')	
ALS out	
A	
B	1200m
C	RVR 1500m VIS 1600m
D	RVR 1800m VIS 2000m



**Chart changes since cycle 08-2019**

ADD = added chart, REV = revised chart, DEL = deleted chart.

ACT	PROCEDURE IDENT	INDEX	REV DATE	EFF DATE
-----	-----------------	-------	----------	----------

YAKUTSK, (YAKUTSK - UEEE)

**Terminal Chart Change Notices**

**Page 1 - Printed on 10 May 2019**

Notice: After 16 May 2019, 0000Z, this data may no longer be valid

(c) JEPPESEN SANDERSON, INC., 2019, ALL RIGHTS RESERVED



**JeppView for Windows**

## **TERMINAL CHART CHANGE NOTICES**

**No Chart Change Notices for Airport UEEE**